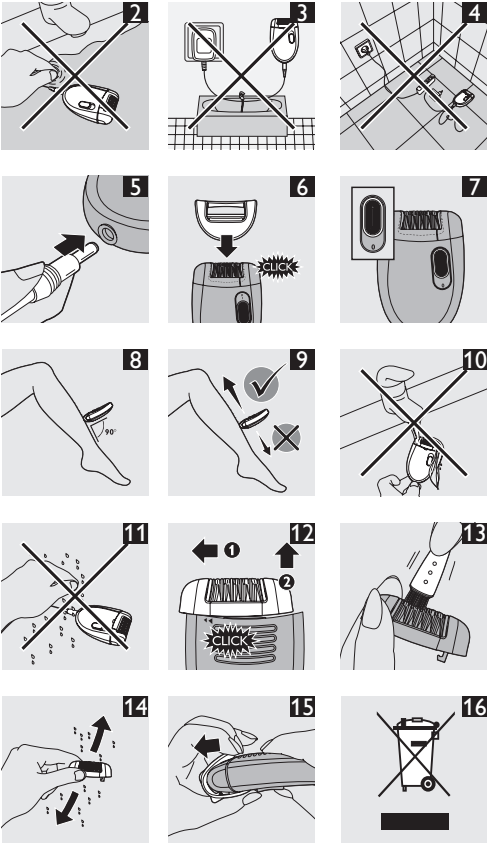
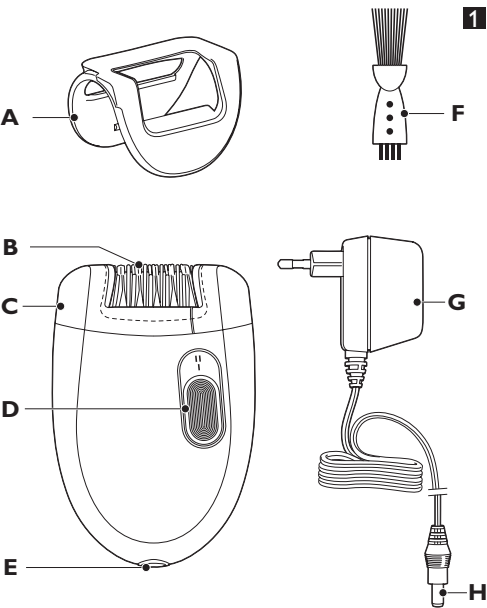


HP6402, HP6400



PHILIPS

Introduction

Congratulations on your purchase and welcome to Philips! To fully benefit from the support that Philips offers, register your product at www.philips.com/welcome.

With your new epilator you can remove unwanted hair quickly, easily and effectively. Its rotating discs catch even the shortest hairs (down to 0.5mm) and pull them out by the root.

Efficiency cap (HP6402, HP6401 only)

Your epilator comes with an efficiency cap that ensures ideal contact with the skin so that hairs are removed effectively in one stroke.

General description (Fig. 1)

- A** Efficiency cap (HP6402, HP6401 only)
- B** Epilating discs
- C** Epilating head
- D** On/off slide
 - O = off
 - I = normal speed
 - II = high speed
- E** Socket for appliance plug
- F** Cleaning brush
- G** Adapter
- H** Small plug

Important

Read this user manual carefully before you use the appliance and save it for future reference.

Danger

- Keep the appliance and the adapter dry.
- Do not use the appliance near or over a washbasin or bath filled with water (Fig. 2).
- Do not use the appliance in the bath or in the shower (Fig. 3).
- If you use the appliance in the bathroom, do not use an extension cord (Fig. 4).

Warning

- Only use the appliance in combination with the adapter supplied.
- Do not use the appliance or the adapter if it is damaged.
- If the adapter is damaged, always have it replaced with one of the original type in order to avoid a hazard.
- The adapter contains a transformer. Do not cut off the adapter to replace it with another plug, as this causes a hazardous situation.
- This appliance is not intended for use by persons (including children) with reduced physical, sensory or mental capabilities, or lack of experience and knowledge, unless they have been given supervision or instruction concerning use of the appliance by a person responsible for their safety.
- Children should be supervised to ensure that they do not play with the appliance.

Caution

- This appliance is only intended for removing women's body hair from the legs. Do not use it for any other purpose.
- To prevent damage and injuries, keep the **running** appliance (with or without attachment) away from scalp hair, eyebrows, eyelashes, clothes, threads, cords, brushes etc.
- Do not use the appliance on irritated skin or skin with varicose veins, rashes, spots, moles (with hairs) or wounds without consulting your doctor first. People with a reduced immune response or people who suffer from diabetes mellitus, haemophilia or immunodeficiency should also consult their doctor first.
- Your skin may become a little red and irritated the first few times you use the epilator. This phenomenon is absolutely normal and quickly disappears. As you use the appliance more often, your skin gets used to epilation, skin irritation decreases and regrowth becomes thinner and softer. If the irritation has not disappeared within three days, we advise you to consult a doctor.
- Do not use the epilating head or efficiency cap (HP6402, HP6401 only) if it is damaged or broken, as this may cause injury.

Electromagnetic fields (EMF)

This Philips appliance complies with all standards regarding electromagnetic fields (EMF). If handled properly and according to the instructions in this user manual, the appliance is safe to use based on scientific evidence available today.

Using the appliance

Note: Clean the epilating head before first use.

Epilation tips

- When you use the appliance for the first time, we advise you to try it out on an area with only light hair growth to get accustomed to the epilation process.
- Epilation is easier just after taking a bath or shower. Make sure your skin is completely dry when you start epilating.
- Make sure your skin is clean, entirely dry and free from grease. Do not use any cream before you start epilating.
- Epilation is easier and more comfortable when the hair has the optimum length of 3–4 mm. If the hairs are longer, we recommend that you shave first and epilate the shorter regrowing hairs after 1 or 2 weeks.
- When you epilate for the first time, we advise you to epilate in the evening, so that any reddening that develops can disappear overnight.
- While epilating stretch your skin with your free hand. This lifts up the hairs and helps to minimise the pulling sensation.
- For optimal performance, place the appliance on the skin at right angles (90°) with the on/off slide pointing in the direction in which you are going to move the appliance. Guide the appliance across the skin against the direction of hair growth in a slow, continuous movement without exerting any pressure.
- On some areas, hair may grow in different directions. In this case, it may be helpful to move the appliance in different directions to achieve optimal results.
- To relax the skin, we advise you to apply a moisturising cream after epilation.
- Fine hair that regrows might not grow up to the skin surface. The regular use of an exfoliating sponge or cream (e.g. during showering) helps to prevent ingrowing hair as the gentle scrubbing action removes the upper skin layer and fine hair can get through to the skin surface.

Connecting the appliance

- 1** Insert the appliance plug into the appliance (Fig. 5).
- 2** Insert the adapter into the wall socket.

Epilating the legs

We advise you to start epilating with the efficiency cap (HP6402, HP6401 only).

If you already have some experience with epilation, you can simply use the epilating head without any attachment.

- 1** **HP6402, HP6401 only:** Put the efficiency cap on the epilating head (Fig. 6).
- 2** Select the desired speed to switch on the appliance (Fig. 7).
Preferably use speed II. Switch to speed I for areas with little hair growth, for hard-to-reach areas and for areas where bones are located directly beneath the skin, such as knees and ankles.
- 3** Stretch the skin with your free hand to make the hairs stand upright.
- 4** Place the epilator perpendicularly onto the skin with the on/off slide pointing in the direction in which you are going to move the appliance (Fig. 8).
- 5** Move the appliance slowly over the skin, against the direction of hair growth. (Fig. 9)

Press the appliance lightly onto the skin.

Cleaning and maintenance

Note: Make sure the appliance is switched off and unplugged before you start to clean it.

Never use scouring pads, abrasive cleaning agents or aggressive liquids such as petrol or acetone to clean the appliance.

- Never rinse the appliance or the adapter under the tap (Fig. 10).

- Keep the appliance and the adapter dry (Fig. 11).

Cleaning the appliance

- 1** Push the epilating head in the direction of the arrows on the back of the appliance (1) and remove it (2) (Fig. 12).
- 2** Remove loose hairs with the cleaning brush (Fig. 13).
- 3** Rinse the epilating head under the tap for 5-10 seconds while turning it.
- 4** Shake the epilating head firmly (Fig. 14).
- 5** Dry the epilating head thoroughly with a tea towel.

Note: Make sure the epilating head is completely dry before you place it back onto the appliance.

Cleaning the efficiency cap (HP6402, HP6401 only)

- 1** Remove the efficiency cap from the epilating head (Fig. 15).
- 2** Remove loose hairs from the efficiency cap with the cleaning brush.
- 3** Rinse the efficiency cap under the tap while turning it.
- 4** Dry the efficiency cap before you use or store it.

Note: Make sure the efficiency cap is completely dry before you place it back onto the epilating head.

Replacement

All parts of the appliance can be replaced. If you need to replace one of the parts, go to your Philips dealer or an authorised Philips service centre.

Environment

- Do not throw away the appliance with the normal household waste at the end of its life, but hand it in at an official collection point for recycling. By doing this, you help to preserve the environment (Fig. 16).

Guarantee & service

If you need service or information or if you have a problem, please visit the Philips website at www.philips.com or contact the Philips Consumer Care Centre in your country (you find its phone number in the worldwide guarantee leaflet). If there is no Consumer Care Centre in your country, go to your local Philips dealer.