

## MAINTENANCE:

Your UCAT-1 requires no maintenance.

### Product Limited Warranty

All Labelmate Products are warranted to the original end-user customer to be free from defects in materials and workmanship. If it is determined by Labelmate that a product has failed under the terms of this warranty, the product will be repaired or replaced at no charge to the customer. Labelmate reserves all rights to determination of coverage and liability under this warranty. The warranty period for all new Labelmate products is outlined below:

Warranty Period	Products Covered
5 years	Label Rewinders Label Unwinders
3 years	Label Counters (mechanical parts only) Label Slitters (mechanical parts only) Label Dispensers Printer Mechanisms
1 year	Power Supply Modules Counter modules Encoders Any products not specified above.

The warranty period for all products starts on the date purchased by the original end-user customer. Warranty coverage is not transferable with ownership and will terminate immediately upon rental, resale or any other change in ownership. This warranty does not cover repair to any product which is damaged, has been modified, is missing parts, or has been opened or repaired by any unauthorised person. Use of any unauthorised accessory or attachment will void coverage. Purchase documentation should be retained for coverage verification.

In the event your product requires service, please contact the distributor you bought the product from. The customer assumes responsibility for all cost and risk incurred in transport for service.

Labelmate makes no other warranty of any kind expressed or implied, or to suitability or fitness for a particular purpose. No other person, agent or reseller is authorised to give any warranties on behalf of Labelmate. Any obligation to warranty other than that specifically addressed above is hereby disclaimed.

## LABELMATE LLC

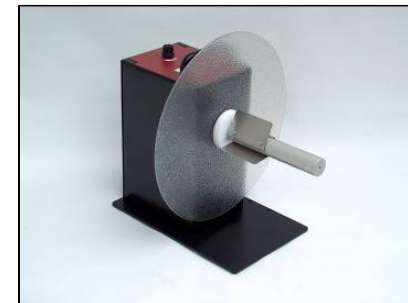
69 AVENUE ALPHONSE XIII, 1180 BRUSSELS, BELGIUM  
TEL: +322.375.69.60 – FAX: +322.375.38.96  
[brussels@labelmate.com](mailto:brussels@labelmate.com)

[www.labelmate.com](http://www.labelmate.com)

© LABELMATE – User\_UCAT-1 – 02/07

# UCAT-1

## Label Unwinder with Adjustable Braking



- **Variable Speed Controlled Braking**
- **Choice of Core Holders**
- **Non-Powered**

**Remove all parts from the shipping container and verify contents.**

### Package Contents

- *User Manual (this document)*
- *UCAT-1 Unit*
- *LABELMATE "Quick-Chuck"™ Quick-Locking Core Chuck or Standard Shaft with three (3) metal Vanes installed, or Model-10-INCHES Shaft with six (6) metal Vanes installed, or Model –ACH: Adjustable Core Holder*
- *300mm (12") Plastic Flange Plate*

**Retain the Shipping Container and Packaging for Storage and Transport**

- **KEEP MANUAL IN A SAFE PLACE FOR FUTURE REFERENCE**

## SPECIFICATIONS:

<b>Max. Label Roll Weight:</b>	7Kg (15.4Lb) for Standard 15Kg (33Lb) for QC 6Kg (13.2Lb) for ACH
<b>Max. Label Roll Size:</b>	300mm (12") diameter - 280mm (11") for ACH

## SET-UP:

*(if you have the ACH Adjustable Core Holder option Skip to step 4).*

1. **STANDARD AND 10":** Identify the inner Label Flange Plate. Slide the Flange Plate onto the hollow end of the Rewind Shaft. For maximum width, the Flange face should be flush with the end of the Shaft. Tighten the screw in the Hub until it is snug. Not too tight.
2. **CHUCK:** Mount the inner Flange onto the Quick-Chuck with two screws provided.
3. Slide the Shaft and Flange Assembly onto the UCAT-1 Motor Shaft allowing for clearance to the UCAT-1 Chassis and Motor Screws. Tighten the Allen Screw onto the flat part of the Motor Shaft until it is tight.
4. **ACH:** Slide the Hub of the ACH over the motor Shaft of the CAT-2. Position the Hub so there is a gap between the ACH Hub and the Rewinder Drive Unit case. Tighten the Allen Screw onto the flat part of the Motor Shaft until it is tight.
5. Set the UCAT-1 in place near the label entrance path to the printer or LABELMATE Label Slitter depending on the job to be run.
6. **CAUTION: AVOID ACCIDENTS. THE UCAT-1 WEIGHS OVER 10KG (22Lb), SO CHOOSE ONLY A STURDY SURFACE ON WHICH TO SET THE UNIT.**



### **WARNING!**

**This Product is for indoor use only.  
Not for use in wet locations.**

## LABEL UNWINDING FOR PRINTING:

The UCAT-1 is bi-directional. It can unwind labels in either direction.

1. Slide the roll of labels to be unwound over the Quick-Chuck or Vanes on the shaft until the core is against the inner Flange Plate. On the Quick-Chuck, tighten the Lock Knob (for an ACH see the ACH user manual).
2. Thread the labels into the printer as required
3. The "BRAKING" Control Knob adjusts the amount of "Frictionless Braking"™ that will be applied to the label roll being unwound. LABELMATE's "Frictionless Braking"™ is speed proportional. This means that for large label rolls, you will want the "BRAKING" Control Knob turned to a higher setting to provide braking for the slowly turning roll. For small rolls, you can use a lower braking force setting as the roll will be turning faster.
4. Begin the printing or slitting operation and adjust the "BRAKING" Control to provide the least braking that will adequately tension the label roll.

## LABEL UNWINDING FOR LABEL SLITTING:

The UCAT-1 Label Rewinder is ideal as part of a setup to slit labels. If small labels are printed several "up" (across) and then slit to their desired width, you realize much greater effective print speed and you also achieve much greater print head and ribbon efficiency. LABELMATE offers three Label Slitters (Models S-100, S-200 and S-100-SP) that can be used with the UCAT-1. Slitting can take place either "in-line" (except with the S-100-SP) directly after exiting the printer, or "off-line" where a roll of printed labels is unwound from a LABELMATE UCAT-1 Label Unwinder.