

# Geo-GIS User's Guide

The User's Guide provides basic instructions to use the Geo-GIS tracking service.

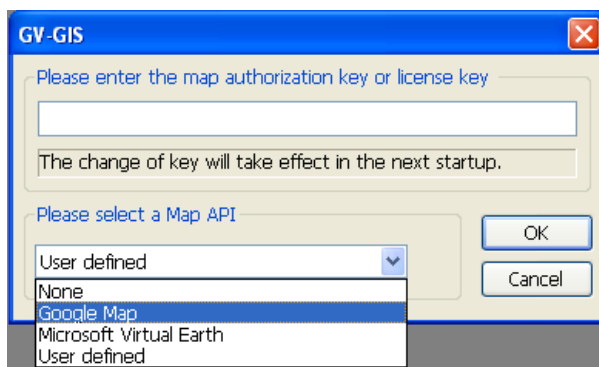
To run Geo-GIS, it is required to have a **Geo-GIS dongle** inserted and dongle drivers installed.

## Installing Geo-GIS

Download the Geo-GIS program to the PC with a Geo-GIS dongle inserted.

1. Download the Geo-GIS program from this link  
<ftp://casper:casper@geo-demo-japan.dipmap.com/ControlCenter-GISbeta.zip>
2. Run **GeoGIS.exe** from the Control Center folder.
3. The first-time user will be prompted for a License Agreement. Read through the license terms before you click **I understand and agree** to continue.
4. From **Please Select a Map API** drop-down list, select a map Application Program Interface (API).

For Google Maps, you need to sign up for an API key before using the maps. For details, see Google website: <http://code.google.com/apis/maps/signup.html>




5. Click **OK** to open the Geo-GIS screen.

## Creating Subscriber Accounts

You need to create subscriber accounts for GV-GPS devices, such as Video Servers and Compact DVRs, before starting the tracking service.

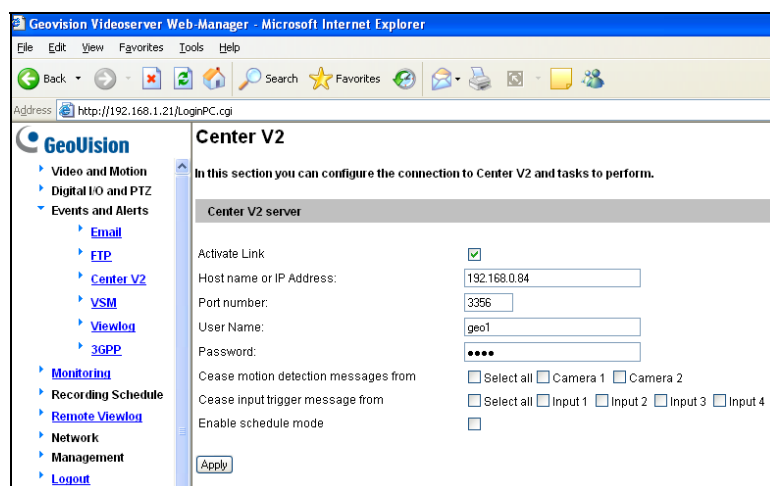
1. Click **Configure** on the menu bar and select **Account Setting**. The Account dialog box appears.
2. Click the **Add a Group** button to create a group.
3. Click the **Add a Subscriber** button to create a subscriber account.
4. Assign a **Login ID** and **Password** for the subscriber to log into Geo-GIS.
5. Other information of the subscriber such as Name, TEL, Mobile, Address and E-Mail are optional entries.

After creating subscriber accounts, you can click the  button on the screen to start the tracking service.


## Connecting to Geo-GIS

You need to configure GV-GPS devices, Video Servers and Compact DVRs, in order to access Geo-GIS remotely through a network connection. Followings are an example of configuring the Video Server.

1. Open the Center V2 configuration page.




2. Select **Activate Link**.
3. Type the **IP address** of Geo-GIS.

4. Change the **Port number** from 5551 to 3356.
5. Type **User Name** and **Password** used to enable the service from Geo-GIS. These entries must match Login ID and Password created on Geo-GIS. Refer to Step 4, *Creating Subscriber Accounts*.
6. Click **Apply** to make a connection. Make sure Geo-GIS also start service with the  button enabled.

When the connection is established between Video Server and Geo-GIS, a message “*Status: Connected. Connected Time: xxx*” will be displayed at the bottom of the Center V2 configuration page.

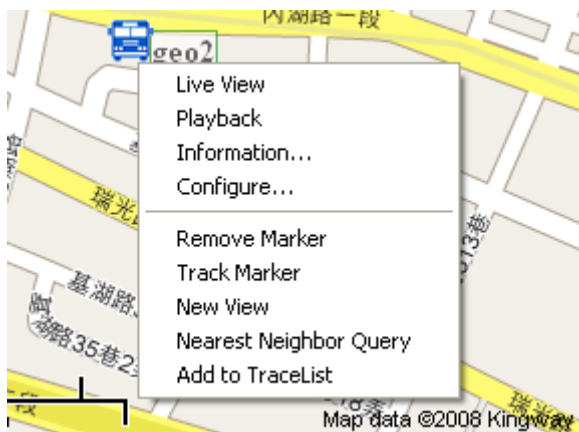
## Tracking Operations

On the Geo-GIS screen, the host icon  will turn from red to blue if the connection is established between Geo-GIS and a GV-GPS device.

The number of connected hosts will be displayed at the bottom of the screen. Take the picture  as example. Three (3) hosts are connecting to Geo-GIS while the tracking service Geo-GIS supports the maximum of 50 hosts.

To track the host, follow these steps:

1. Drag and drop the host icon to any place on the map.
2. Right-click the host icon on the map or Tracking Host List to have these features:

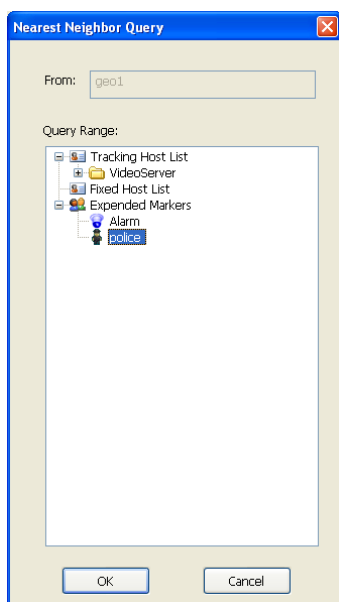


- **Live View:** Click this to display live view.
- **Playback:** Click this to display the route took by the host within a specified period of time.
- **Information:** Click this to view the subscriber information.
- **Configure:** Click this to link to the configuration interface of the GV-GPS device, such as Video Server or Compact DVR.
- **Remove Marker:** Click this to remove the selected host from the map.
- **Tracker Marker:** Click this to always keep the selected host staying at the center of the map when the vehicle moves. A highlighted yellow block similar to the below picture will appear on the map. Clicking the highlighted block can stop the vehicle tracking.

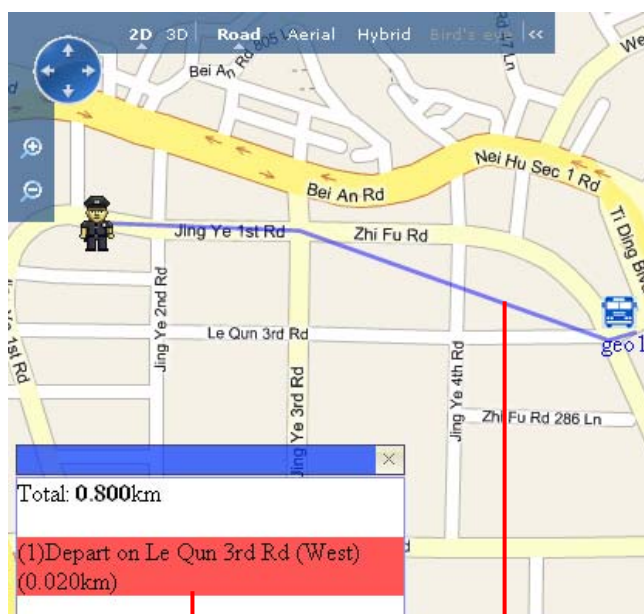
Pause(Track Marker: geo3)

- **New View:** Click this to track the selected host in a separate window.
- **Nearest Neighbor Query:** You can select a desired target, and Geo-GIS will display a route and provide step-by-step directions from the selected host to that target.

Note that depending on Maps API, this feature may not available for your location.



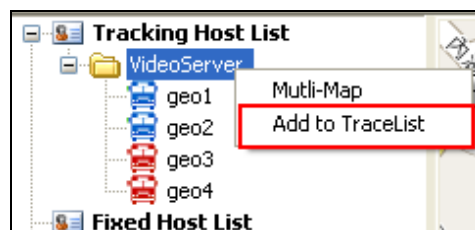
Select a target of interest



The window provides the estimated distance and step-by-step directions.

The blue line provides the possible route from the target to the selected host.

- **Add to Trace List:** You can track multiple GV-GPS devices simultaneously in separate windows or a single window.
  - A. To add desired GV-GPS devices to the trace list by either of these ways:
    - **Add hosts one by one:** Select one host on the map and click **Add to Trace List**. The Trace List window appears and the host is added. Keep the Trace List window open. Select the second host and click **Add to Trace List** to add to the trace list. You may add multiple hosts to the trace list.
    - **Add a group of hosts:** Right-click one group and select **Add to Trace List**.

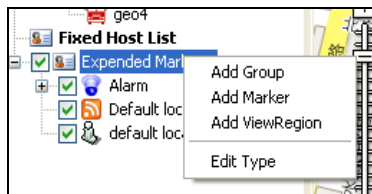


- B. Select the desired hosts on the Track List window, and click **Execute** to start tracking these hosts.
    - C. To change the view mode, on the main screen, click **Configure** on the menu bar, select **System Configure**, and select view mode from **Multi-Map Style** drop-down list.

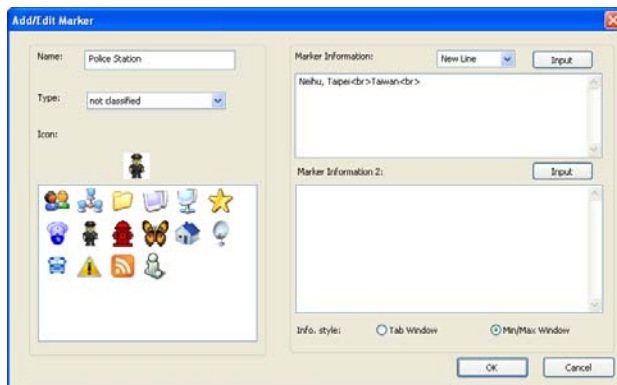
## Adding a Placemark

You can add a place of interest to the map by creating an additional marker and placing it on the map.

1. On the screen, right-click **Expended Markers** on the screen.



2. You may choose to group the additional marker by selecting **Add Group** first. Otherwise, select **Add Marker** directly to create a marker. This dialog box appears.

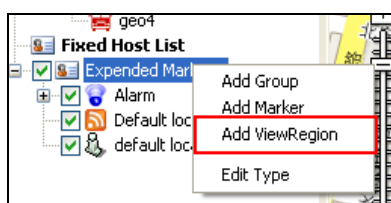


3. Name the new marker, select the type and icon, enter relevant information, and click **OK**.
4. Drag the new marker to the correct location on the map.

## Saving a View

You can save a view of interest by creating a marker for it. Every time when you click on the marker, the map will return to the saved view.

1. Adjust the map to the desired view.
2. On the screen, right-click **Expended Markers** and select **Add View Region**.

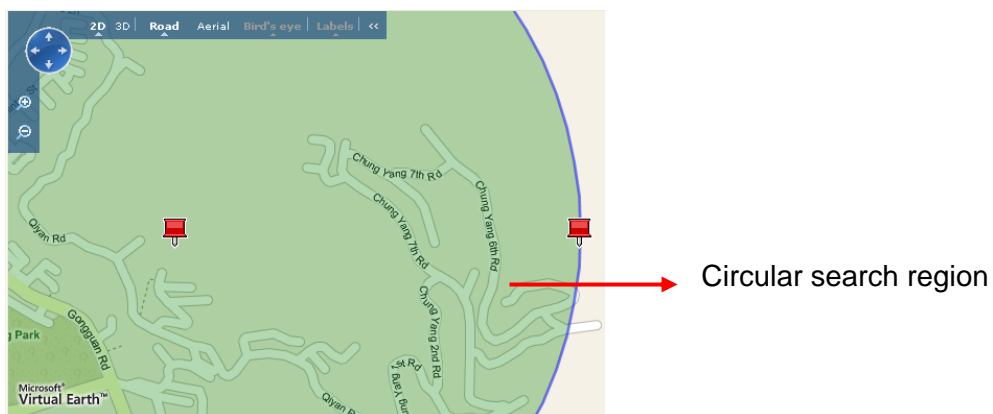


3. Name the view, select one marker, and click **OK**.
4. You can save more than one view by following above steps.
5. If you like to change the saved view, click the marker and select **Update Region**.

## Searching GV-GPS Devices

You can search GV-GPS devices within a defined region.

1. Right-click on the map, and select **Range Query**. A circular search region and the Range Query dialog box appear.
2. To adjust the search region, follow one of the three ways:
  - Use the marker at the center of the circular region to move the circle to the appropriate location. Use the marker at the rim of the circular region to increase or decrease the range of the search region.



- On the Range Query dialog box, define the speed of the vehicle in kilometer per hour and the time in minutes the vehicle might travel. Clicking **Check Range** will display a circular search region on the map based on your definition.

Query Range

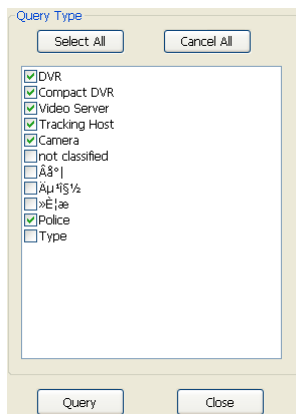
<input type="text" value="10.00"/>	km/hour	<input type="button" value="Check Range"/>
<input type="text" value="10.00"/>	minutes	

- On the Range Query dialog box, define the radius of the search region in meters. Clicking **Check Range** will display a circular search region on the map based on your definition.

Query Range

<input type="text" value="0.00"/>	meters	<input type="button" value="Check Range"/>
-----------------------------------	--------	--

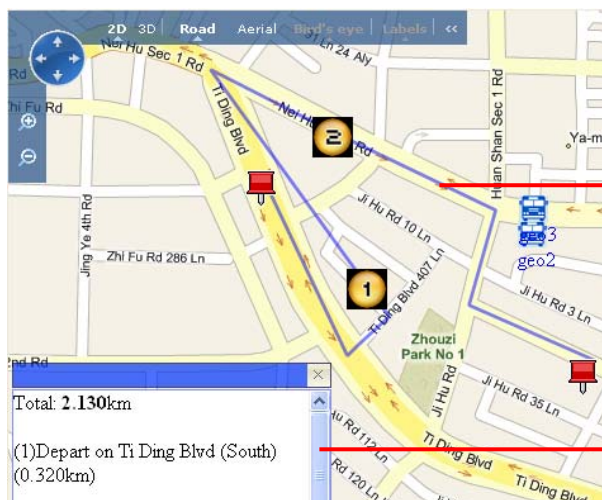
- On the Range Query dialog box, select **Query Type**, and click **Query** to start searching GV-GPS devices within the define region.



## Getting Driving Directions

You can plot your route by defining the starting point, multiple stops and destination on the map, and get the step-by-step driving directions. This feature may not be available to your location depended on Maps API.

- Right-click on the map, and select **From** to set the starting point.
- Right-click on the map, and select **To** to set the stop where you like to go before reaching to the final destination. You may set up multiple stops.
- Right-click on the map, and select **Destination** to set the destination. A route and step-by-step directions, similar to the picture below, will be displayed.



The blue line displays your customized route.

The window provides the estimated distance and step-by-step directions.