

Instrumentarium Dental



Premium Solutions For Dental Imaging

Focus™ X-Ray

The focus intraoral x-ray is robust and user friendly with sophisticated features. It brings increased efficiency to intraoral imaging and is a perfect solution for every dental practice.

Features:

- Anti-Drift Mechanism
- Automatic dose display (DAP)
- The longest arm reach on the market
- DC generator keeps patient dose to an absolute minimum.



Orthopantomograph® OP30



The Orthopantomograph® OP30 combines distinctive design and reliable quality with professional tools for standard panoramic imaging needs.

The quality of images is a result of many elements, such as carefully designed features, technical characteristics and correct patient positioning. It provides you with a perfect image - every single time - in just 10 seconds.

Features:

- Stable 5 point patient positioning
- Patented V-shaped beam
- Optimized panoramic image geometry
- 3 laser positioning lights
- Adjustable anterior layer position – fits every patient
- Reliable tube head
- Small footprint (easy wheelchair accessibility)

Orthopantomograph® OP200

Orthoceph® OC200

(Film Unit)

Features:

- Accurate and stable patient positioning
- Unique automatic patient dose recording
- User controllable radiation field
- Ortho Zone program solves imaging problems associated with malocclusion and molar artefacts
- Special TMJ program provides both PA and lateral views on one film



Orthopantomograph® OP200D Orthoceph® OC200D (Digital Unit)



SmartPad™

The SmartPad™ full colour high-resolution touch screen produces an easy intuitive navigation through the operations.



The OP200D imaging unit offers:

- A new completely integrated system, complete with SmartPad™ full-colour touch screen
- Instant dynamic help and animated patient positioning guide
- SmartNav™ navigation software provides intelligent, interactive navigation and selection of imaging programs
- The most adaptable configurations for your specific needs
- Uncompromised image quality
- VT software option available for digital volumetric tomography applications

Volumetric Tomography - an advanced tool for implantology*

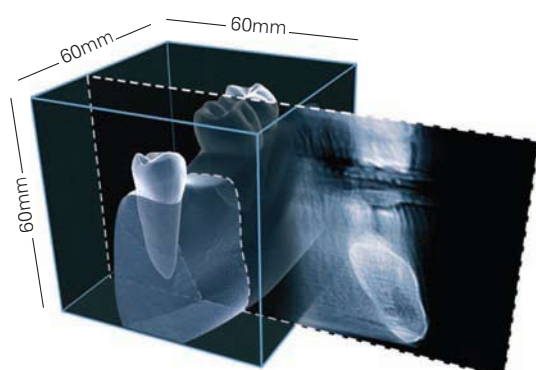
The VT option is a comprehensive cross-sectional imaging tool that provides digital tomography with reliable measurements and excellent image quality for implant site evolution.

VT Offers

- Easy patient positioning
- Automatically perpendicular slices
- Accurate measurements
- Implant planning tool with implant library

VT stack view provides you accurate information, especially for implant planning, The precise location of each cross-section slice is always known.

*Only available with the OP200D



Express

Digital Imaging Plate System



The Express is an intraoral imaging plate system for dental radiography. It features the latest technology and is compatible with both AC and DC intraoral x-ray units

Suitable for all types of dental practices and intraoral imaging needs

Guided Plate Feed (GPF) function system actively guides the user to insert imaging plates with the right orientation and indicates incorrect orientation.

Additional Features:

- Superb, fast results
- Smooth workflow
- All-in-one system
- Full set of accessories
- 4 imaging plate sizes
- Can be wall-mounted
- Up to 8 PC's can share one Express
- Patented iDOT imaging plate system

Benefits vs. film

- Images available instantly
- Digital archiving and distribution
- Digital image processing
- No under or overexposures
- No film processing or harmful chemicals
- Full daylight use

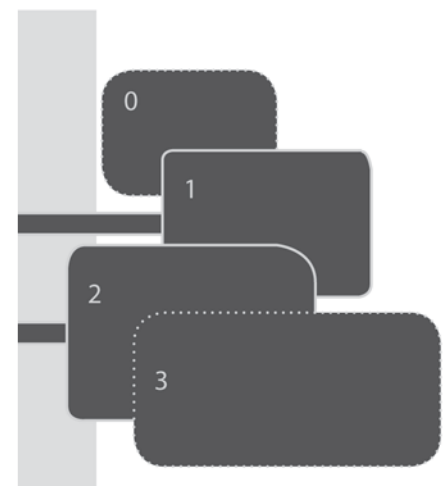
What is included?

- Express imaging plate reader
- 10 imaging plates with iDOT technology (2 x size 0, 2 x size 1, 5 x size 2, 1 x size 3)
- Hygiene accessories start up kit (100 pieces of each size)
- Imaging plate storage box
- Imaging software CD
- Manuals
- Power supply
- Standard 24 month warranty

Full set of accessories and consumables available including:

- Imaging plates
- Protective covers
- Hygiene bags
- Imaging plate storage box
- Film holders

Please see page 72 for a full listing of our accessories and consumables.



Snapshot

Digital Intraoral Sensors

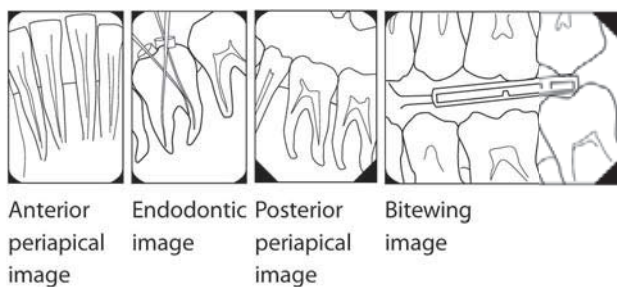


Snapshot is a family of two digital intraoral sensors for dental radiography

- Sensor size 1 "compact"
- Sensor size 2 "bitewing"

The sensors lend themselves to all types of dental practices and intraoral imaging needs and are compatible with both AC and DC intraoral x-ray units

Take every intraoral image with just one x-ray setting. Snapshot's wide dynamic range provides superior images of different parts of the dentition without altering the settings on your x-ray device.



Anterior periapical image Endodontic image Posterior periapical image Bitewing image

Benefits:

- The simplest workflow
- Best-in-class clinical results
- Truly portable sensor with a small footprint
- Plug and play

What is included?

- Intraoral sensor with USB 2.0 High-speed connection
- CliniView Software
- Instrumentarium TWAIN driver
- Wall mount set and cable clip
- User manual and quick guides
- 5 years standard warranty

Optional Extras and Consumables:

- Sensor holders (see page 73)
- Hygienic covers (see page 72)
- Extended care plan (up to 5 yrs extended warranty)

