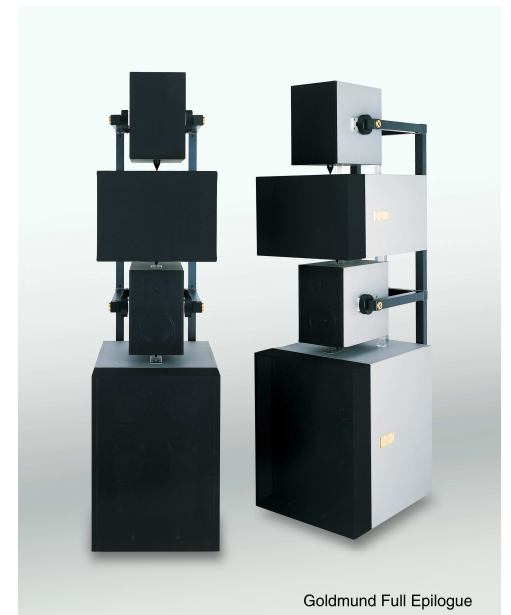


USER MANUAL

GOLDMUND EPILOGUE 3 SIGNATURE Subwoofer Speaker



Goldmund Full Epilogue

Thank you for purchasing the Goldmund Epilogue 3 Signature Speaker. You have acquired the best Subwoofer Speaker ever made for professional and domestic uses.

Please take some time to read this manual. It will provide you with useful information to make your pleasure of listening to the Epilogue 3 Signature even higher.

INTRODUCTION

GOLDMUND EPILOGUE 3 SIGNATURE – Subwoofer Speaker

Goldmund was founded in 1978 and has ever since been dedicated to the accurate reproduction of sound and image.

At Goldmund, we strive to lead in the creation, development and manufacture of the industry's most advanced technologies, including audio and video systems, home - networking and music distribution.

The guiding principle at Goldmund is to produce a precise sound with the least possible loss of quality through the different stages. Goldmund will never adopt a technology before it is sufficiently developed to satisfy the high quality standards we set. This is why Goldmund has often rejected mainstream technologies and developed its own.

Table of Contents

1	PRELIMINARIES	5
2	UNPACKING	5
3	SUBWOOFER LOCATION & COOLING	6
4	SPEAKERS PHYSICAL ALIGNMENT	6
5	LINE VOLTAGE ADJUSTMENTS	7
6	CONNECTIONS	8
7	SPEAKER CONTROLS	9
8	SAFETY FEATURES	10
9	RUNNING-IN	11
10	CLEANING	12
11	TECHNICAL SPECIFICATIONS	12

W A R N I N G !

This extremely high quality speaker possesses new technical features which are necessary for accurate sound reproduction in the best audio systems.

Only careful installation and use can provide the satisfaction you are expecting.

All handling must be performed according to the following instructions to avoid damaging the speaker.

Only careful installation and use can provide the satisfaction you are expecting. The installation instructions must be carried out in full and the mentioned precautions taken to get the expected result and to avoid impairing the speaker's performance.

1

PRELIMINARIES

Please read very carefully the following instructions. This high-precision speaker is extremely revealing and can provide the best sound only if it is used properly.

The Epilogue 3 Signature is never used as a stand-alone speaker. Its most usual configuration is associated to one or more pairs of Epilogue speakers in a 2-channel or multi-channel speaker system. In a Goldmund Media Room, the Epilogue 3 Signature is used along with Full Epilogue speakers system (see the picture on the front page of this manual).

The Epilogue 3 Signature is an infra-subwoofer producing very low frequencies. This implies that you will not hear some of the sounds produced by the speaker as the human ear can only detect frequencies above 20HZ. However, you will not fail to physically feel the profound vibrations it generates. The Epilogue 3 Signature is particularly recommended for Home Theater applications because it allows reproducing the infrasonic part of the LFE signal. It will complete your Epilogue system by providing ultimate sensations that no other speaker can create.

2

UNPACKING

ATTENTION

If you need to return the Epilogue 3 Signature to the factory or to your local representative for a warranty repair, please note that it must be repacked in the original packing. This packaging has been specifically designed to protect the speaker in transit. Use of alternative packaging may result in damage, invalidating the warranty.

Because of its heavy weight, the Epilogue 3 Signature infra-subwoofer unpacking and positioning requires several persons.

3

SUBWOOFER LOCATION & COOLING

For optimal sonic result, it is essential that vibrations arising within the Epilogue 3 Signature be evacuated to the ground effectively. Solid coupling with a very rigid floor is an essential element in this process. If your speaker support is standing on a suspended floor, position at least two of the floor contacts above a supporting beam or close to a supporting wall.

Preserve space around the speaker to provide proper cooling.

We recommend using the Epilogue 3 Signature with the Epilogue Frame in a Full Epilogue System.

4

SPEAKERS PHYSICAL ALIGNMENT

The ideal system set up allows the waves front created by each speaker section to reach the listener simultaneously. In order to achieve this, you will need to position the speakers so they all are at an equal distance from the listener position.

Attention: the front panel of each speaker is the reference point. Each speaker front panel needs to be placed at the same distance from the listening position.

In case the optimal positioning indicated above cannot be respected because of space constraints, the Goldmund acoustic processors (Mimesis 16, 16HD and Mimesis 32) allow adjusting the position delay and the gains digitally. Customized system configurations can be calculated based on the exact position of your speakers in your system. This will give you flexibility to position the speakers in your room while still delivering the optimal sound result.

Contact your local Goldmund representative for more information on our acoustic processors.

5 LINE VOLTAGE ADJUSTMENTS

A voltage selection is provided inside the amplifier.

If your line voltage is not adapted to the voltage indicated on the serial plate of the amplifier, please consult your local GOLDMUND dealer for internal adjustment.

ATTENTION

On the 220V position, the Epilogue 3 Signature will function properly for main line voltage between 190V and 245V. On the 110V position, the main line must deliver between 95 and 125V. If your main line is usually out of these tolerances, please consult your GOLDMUND dealer.

Please check the value of the main line fuse. This fuse is located on the back panel of the Speaker, above the power cord receptacles.

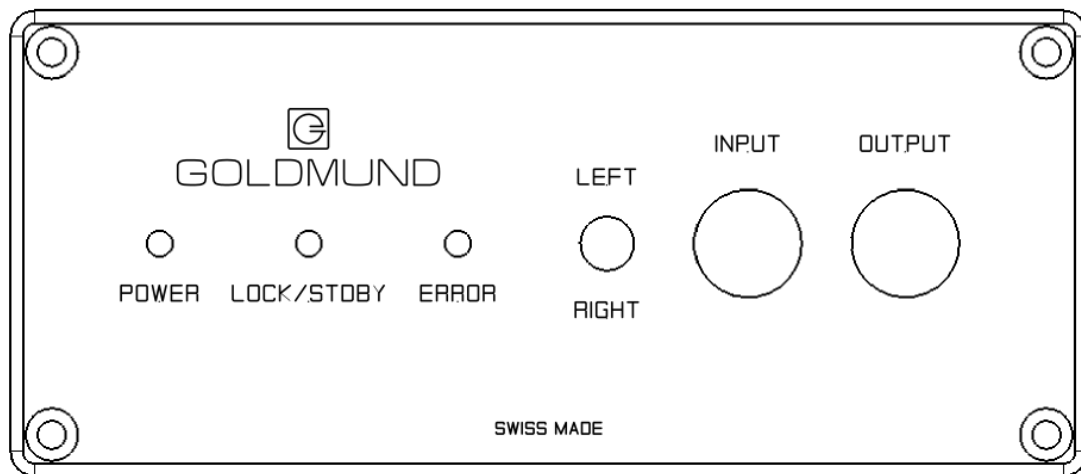
Use an 8A delayed fuse.

6

CONNECTIONS

Connect the power cord to the back of the speaker and plug it into the nearest wall plug. Use only a 3 lugs grounded plug, for safety reasons. To get the best sound from the speaker, avoid multiple plugs or extension cords.

When used with a digital input signal, connect the digital cable to the digital input connector. Since a digital Spdif cable carries 2 channels you may link the digital output to the next speaker to transfer the second channel.



7 SPEAKER CONTROLS

As soon as the speaker is connected to AC line, the three lights on the back panel light once, indicating the speaker is powered ON.

The Epilogue 3 Signature is automatically powered ON when receiving a signal (Auto-Power Operation). The green and orange lights will turn ON when a signal is locked.

When the Epilogue 3 Signature is turned ON without input signal during a delay of 10 minutes the green light flashes three times. The unit automatically enters in STANDBY mode and the green light will flash slowly until a new signal is locked.

If an error is detected the red light will be lit. Once the cause of the error has been identified and fixed, the speaker automatically returns to the OPERATE mode.

These security features are provided to reduce the risk of accidental POWER ON or POWER OFF and to protect the speaker.

Auto-power operation

The Epilogue 3 Signature is turned on automatically when receiving an audio signal.

Back panel error codes

If an abnormal situation is detected by the Epilogue 3 Signature, the rear panel red light will turn ON and the power of the speaker will instantaneously be set OFF.

The light will flash once if a DC signal has been detected, twice if it is a HF oscillation problem, three times for an over-temperature situation, or four times in case of an overload (for example when output is short-circuited).

8 SAFETY FEATURES

The Epilogue 3 Signature speaker provides features to protect the speakers against all mishandling or component failure. However precautions must be taken to avoid problems with a very high power amplifier.

Protection against DC

The Epilogue 3 Signature has a DC-coupled amplifier. If the associated preamplifier is badly designed or defective (often true for tube preamps), the speakers could be damaged. In such a case, the DC protection circuit of the Epilogue 3 Signature will automatically turn off the amplifier. This detection circuit is totally immune to any sonic effect.

To indicate that the amplifier has been turned off by the protection circuit, a red led will be displayed on the rear panel.

When the source of DC offset is suppressed, the speaker will automatically turn ON again.

Protection against HF oscillations

In the same way, the speaker must be protected against a large amount of high frequency oscillations, if present, before and after to avoid any danger for the tweeters, even if these frequencies remain unnoticed.

The amplifier is by itself extremely stable. However some mishandling must be avoided in order to avoid any oscillation:

- Never plug an input cable into a power amp when it is turned on.
- Be careful to use only very high quality interconnects. If the ground connection becomes loose, there is a big danger of oscillation. Warranty is voided if this occurs.

If the Epilogue 3 Signature detects excessive oscillation, the amplifier will be turned OFF automatically. You will have to suppress the source of oscillation to let the speaker turn ON again once the protection has been activated.

8 SAFETY FEATURES (Ctd.)

Overheating protection

If for any reason (malfunction, too high level, too low load impedance) the temperature of the amplifier reached a dangerous level the Epilogue 3 Signature could be damaged.

To avoid this type of damage, if the temperature rises too high, a protection circuit switches the amplifier OFF automatically. A red rear panel light indicates that the amplifier has been turned OFF by the protection circuit.

If this happens, let the amplifier cool for some time. We strongly recommend investigating the cause of the temperature gain before operating the amplifier again.

9 RUNNING-IN

The Epilogue 3 Signature, like any other top quality speaker, needs several days playing music before delivering the top sonic quality it is built to provide.

The few first hours can be very frustrating for a demanding listener.

Do not hesitate to let it play quite loud for some time before attempting any real system tuning or position adjustment.

10 CLEANING

To clean the metal case of the subwoofer, you can use a clean, soft, damp cloth. Dampen with water or a mild detergent solution. Avoid abrasive or harsh cleansers (e.g. products containing sodium carbonate).

11 TECHNICAL SPECIFICATIONS

Driver:

- 15" driver

Frequency Bandwidth:

- 10 Hz - 20 Hz (-10 dB)

Speaker System behavior:

- Acoustic Filter System

Speaker's amplifier

- Built in 500 W Rms Telos Amplifier (12 W in standby mode)

Distortion

- Static: THD < 0.05 % (test conditions: Vin = 1kHz @ 100mV, unweighted)

Safety feature:

- AC voltage fuse: 8 A slow-blow

Size and Weight:

- Weight of the subwoofer: 170 kg.
- Size of the speaker: 520 mm W x 720 mm L x 760 MM H.

Information and product specifications contained in this manual are subject to change without prior notice. Updated versions of this manual will be posted on our website at www.goldmund.com.

Please visit our support page at <http://www.goldmund.com/support/register> to register your Goldmund product for warranty.