

MICROH **DJ**
www.microhdj.com



USER MANUAL
LED TRICKSTER

Keep this manual for future reference.

1. INTRODUCTION AND UNPACKING

Thank you for purchasing the MICROH LED TRICKSTER effects fixture. For your own safety and knowledge, please read this manual before installing or operating the device. This manual covers the important information on installation and applications. Please install and operate the fixture according to instructions. Meanwhile, please keep this manual for future reference.

The MICROH LED TRICKSTER effects fixture is made of a new type of high temperature cast aluminum casing. The fixture is designed and manufactured strictly following CE standards, complying with international standard DMX512 protocol. This fixture is applicable but not limited to large-scale live performances, theater, studio, nightclubs and discos.

The MICROH LED TRICKSTER effects fixture uses 16 x 3W UV LED's which features high brightness and stability. Please carefully unpack it when you receive the fixture and check if it was damaged during the transportation. Please check whether the following items are included inside the box:

Fixture – One

Power Cord – One

User Manual - One

2. SAFETY INSTRUCTIONS



This device has left the factory in perfect condition. In order to maintain this condition and to ensure safe operation, it is absolutely necessary for the user to follow the safety instructions and warning notes written in this user manual.



Important:

Damages caused by the disregard of this user manual are not subject to warranty. The dealer will not accept liability for any resulting defects or problems.

If the device has been exposed to temperature changes, do not switch it on immediately. The arising condensation could damage the device. Leave the device switched off until it has reached room temperature, and is dry.

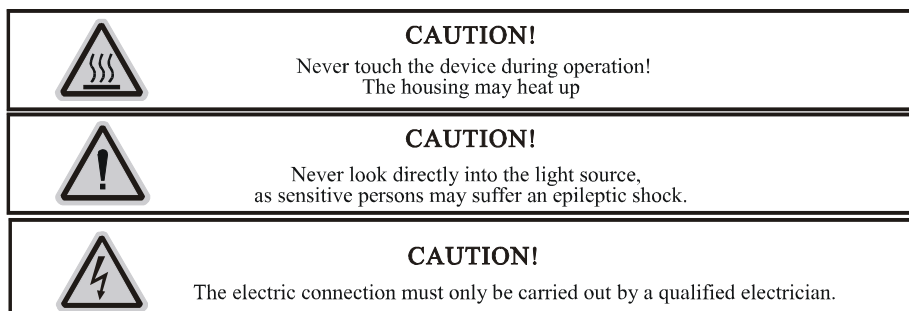
This device falls under protection-class I, therefore it is essential that the device be grounded. The electrical connection must be carried out by a qualified technician.

The device should only be used with rated voltage and frequency. Make sure that the available voltage is not higher than 120V as stated at the end of this manual.

Make sure the power cord is never crimped or damaged in any way, as this could cause shock and damage. If your power cord is damaged in any way, please purchase a new cable from your local MICROH dealer. Always disconnect power, when the device is not in use or before cleaning it. Never pull out the plug by tugging the power cord.

During initial start-up, some smoke or smell may arise. This is a normal process, and does not necessarily mean that the device is defective. It should decrease gradually. Please do not project the beam onto combustible substances.

Fixtures cannot be installed on or near combustible substances. Keep more than 50cm distance from wall for proper ventilation and air flow. If your fixture is or has become damaged in any way, it shall be exclusively replaced or repaired by the manufacturer to avoid any hazard.



2. MOUNTING AND INSTALLATION

Caution: For added protection, mount the fixtures in areas outside walking paths, seating areas, or in areas where the fixture might be reached by unauthorized personnel. Before mounting the fixture to any surface, make sure that the installation area can hold a minimum point load of 10 times the device's weight. Fixture installation must always be secured with a secondary safety attachment, such as an appropriate safety cable. Never stand directly below the device when mounting, removing, or servicing the fixture.

Whether installing inverted on a truss / ceiling or set on a flat level surface (see illustration below). Be sure this fixture is kept at least 0.5m (1.5 ft.) away from any flammable materials (decoration etc.). Always use and install the supplied safety cable as a safety measure to prevent accidental damage and/or injury in the event the clamp fails.

Mounting Points: Overhead mounting requires extensive experience, including calculating working load limits. A knowledge of the installation material being used and periodic safety inspection of all installation material and the fixture are all imperative and should only be performed by a qualified technician. Improper installation can result in bodily injury and damage.

Be sure to complete all rigging and installation procedures before connecting the main power cord to the appropriate wall outlet.

Floor Mounting: Set the 2 brackets at your desired angle and aim your fixture accordingly. Please see diagram below.



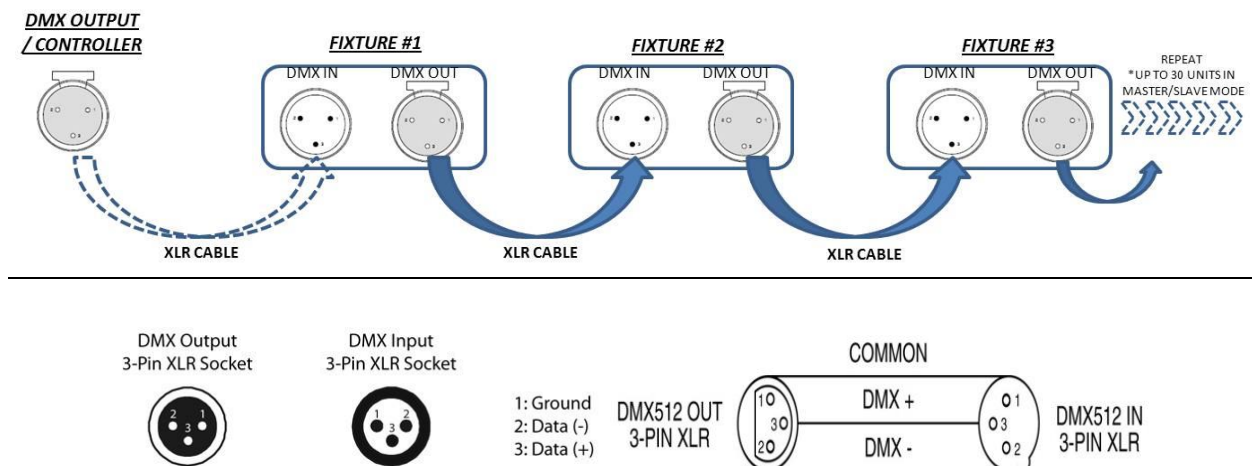
Clamp Mounting: The MICROH LED TRICKSTER provides a unique mounting bracket assembly that integrates 2 brackets to be used to mount on a truss or the floor. When mounting this fixture to truss, be sure to secure an appropriately rated clamp to the included bracket fitted through the center hole. As an added safety measure, be sure to attach at least one properly rated safety cable to the fixture.



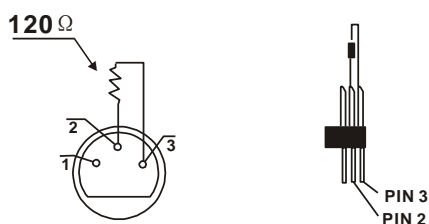
Regardless of the rigging option you choose for your MICROH LED TRICKSTER effects fixture, always be sure to secure your fixture with a safety cable. The fixture provides a built-in rigging point for a safety cable on the hanging bracket as illustrated above. Be sure to only use the designated rigging point for the safety cable and never secure a safety cable to a carrying handle.

5. DMX-512 CONTROL CONNECTIONS

This fixture complies with international USITT DMX standards and can be used with either a 3 pin or 5 pin DMX connector. Plug in the provided 3 pin XLR cable to the female 3-pin XLR output of your controller and the other side to the male 3-pin XLR input of the LED TRICKSTER effects. To connect the units to DMX, you must daisy chain the fixtures together as referred in the diagram below. Always end your DMX-512 connection with a DMX terminator.



For installations where the DMX cable has to run a long distance, or is in an electrically noisy environment, it is recommended to use a DMX terminator. This helps in preventing corruption of the digital control signal by electrical noise. The DMX terminator is simply an XLR plug with a 120 Ω resistor connected between pins 2 and 3, which is then plugged into the output XLR socket of the last fixture in the chain. Please see illustrations below.



6. SETUP MENU

DISPLAYED	FUNCTION
<i>0.001</i>	DMX ADDRESS
<i>SOUN.</i>	SOUND ACTIVE
<i>PR.00.</i>	PRESET MACROS
<i>SP.00.</i>	SPEED
<i>SLAV.</i>	SLAVE

7. DMX CHANNEL CHART

CHANNEL	FUNCTION	ADDRESS	DESCRIPTION
CHANNEL 1	COLOUR	1 - 14	OFF
		15 - 29	RED
		30 - 44	GREEN
		45 - 59	RED+GREEN
		60 - 74	BLUE
		75 - 89	RED+BLUE
		90 - 104	RED+GREEN
		105 - 119	RED+GREEN+BLUE
		120 - 134	WHITE
		135 - 149	RED+WHITE
		150 - 164	GREEN+WHITE
		165 - 179	RED+GREEN+WHITE
		180 - 194	BLUE+WHITE
		195 - 209	RED+BLUE+WHITE
		210 - 224	GREEN+BLUE+WHITE
		225 - 239	RED+GREEN+BLUE+WHITE
		240 - 254	OFF
		255	RED

CHANNEL 2	COLOUR	1 - 14	OFF
		15 - 29	RED
		30 - 44	GREEN
		45 - 59	RED+GREEN
		60 - 74	BLUE
		75 - 89	RED+BLUE
		90 - 104	RED+GREEN
		105 - 119	RED+GREEN+BLUE
		120 - 134	WHITE
		135 - 149	RED+WHITE
		150 - 164	GREEN+WHITE
		165 - 179	RED+GREEN+WHITE
		180 - 194	BLUE+WHITE
		195 - 209	RED+BLUE+WHITE
		210 - 224	GREEN+BLUE+WHITE
		225 - 239	RED+GREEN+BLUE+WHITE
		240 - 254	OFF
		255	RED
CHANNEL 3	COLOUR	1 - 14	OFF
		15 - 29	RED
		30 - 44	GREEN
		45 - 59	RED+GREEN
		60 - 74	BLUE
		75 - 89	RED+BLUE
		90 - 104	RED+GREEN
		105 - 119	RED+GREEN+BLUE
		120 - 134	WHITE
		135 - 149	RED+WHITE
		150 - 164	GREEN+WHITE
		165 - 179	RED+GREEN+WHITE
		180 - 194	BLUE+WHITE
		195 - 209	RED+BLUE+WHITE
		210 - 224	GREEN+BLUE+WHITE
		225 - 239	RED+GREEN+BLUE+WHITE
		240 - 254	OFF
		255	RED

CHANNEL 4	COLOUR	1 - 14	OFF
		15 - 29	RED
		30 - 44	GREEN
		45 - 59	RED+GREEN
		60 - 74	BLUE
		75 - 89	RED+BLUE
		90 - 104	RED+GREEN
		105 - 119	RED+GREEN+BLUE
		120 - 134	WHITE
		135 - 149	RED+WHITE
		150 - 164	GREEN+WHITE
		165 - 179	RED+GREEN+WHITE
		180 - 194	BLUE+WHITE
		195 - 209	RED+BLUE+WHITE
		210 - 224	GREEN+BLUE+WHITE
		225 - 239	RED+GREEN+BLUE+WHITE
		240 - 254	OFF
		255	RED
CHANNEL 5	COLOUR	1 - 14	OFF
		15 - 29	RED
		30 - 44	GREEN
		45 - 59	RED+GREEN
		60 - 74	BLUE
		75 - 89	RED+BLUE
		90 - 104	RED+GREEN
		105 - 119	RED+GREEN+BLUE
		120 - 134	WHITE
		135 - 149	RED+WHITE
		150 - 164	GREEN+WHITE
		165 - 179	RED+GREEN+WHITE
		180 - 194	BLUE+WHITE
		195 - 209	RED+BLUE+WHITE
		210 - 224	GREEN+BLUE+WHITE
		225 - 239	RED+GREEN+BLUE+WHITE
		240 - 254	OFF
		255	RED
CHANNEL 6	STROBE	0 - 255	WHITE STROBE
CHANNEL 7	STROBE	0 - 255	RGBW STROBE
CHANNEL 8	SPEED	0 - 255	CH6 & CH7
CHANNEL 9	SOUND	0 - 255	SOUND MODE

9. TECHNICAL SPECIFICATIONS

MODEL: LED TRICKSTER

LED's: 60x RED, 75x GREEN, 45x BLUE, 30x WHITE plus 72x WHITE strobes LED'S

OPERATING TEMPERATURE: -25°C to 45°C

VOLTAGE: 110VAC 60Hz 84W

FUSE: 1A

DIMENSIONS: 310(H) x310(W) x230(L) mm

NET WEIGHT: 4 kg

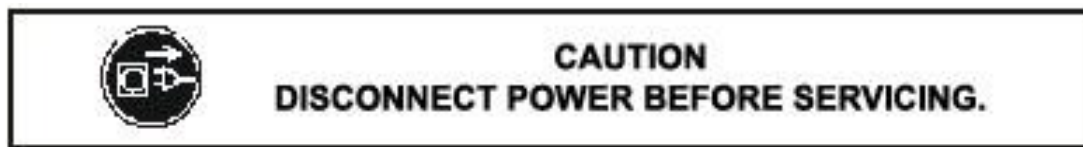
WARRANTY: 2 Year Limited Warranty

10. MAINTENANCE AND CLEANING

The following points have to be considered during the inspection:

- 1) All screws for installing the device or parts of the device must be tightly connected, and must not be corroded.
- 2) There must not be any deformations on the housing, colour lenses, fixations or installation spots (ceiling, suspension, trussing).
- 3) Mechanically moved parts must not show any traces of wearing and must not rotate with unbalances.
- 4) The electric power supply cables must not show any damage, material fatigue or sediments.

Further instructions depending on the installation spot and usage must be handled by a skilled installer or technician. Any safety issues must be resolved.



In order to keep the fixture in good condition and extend the life, we suggest regular cleaning to the fixture.

- 1) Clean the inside and outside lens each week to avoid the light output from darkening due to accumulation of dust, dirt, etc.
- 2) Clean the fan each week.
- 3) A detailed electrical check by approved technician every three months is advised. Ensure the circuit contacts are in good condition.

We recommend a frequent cleaning of the device. Please use a moist, lint- free cloth. Never use alcohol or solvents.

There are no serviceable parts inside the device. Please refer to the instructions under "Installation instructions".

Should you need any spare parts, please order genuine MICROH parts from your local dealer.

IF YOU SHOULD EXPERIENCE ANY PROBLEMS OR ISSUES PLEASE CONTACT MICROH PROFESSIONAL PRODUCTS BY EMAIL AT info@microhpro.com

In the event that your unit is defective in any way, please contact your local dealer to obtain an RA number for service repair.

DISCLAIMER – MICROH believes that the information contained within this user manual is accurate. However, Microh is not responsible for any error or addendums to this manual. If you have any comments or general suggestions on how this manual can be improved please contact info@microhpro.com. Thank you.

NOTES:

MICROH 

www.microhdj.com