

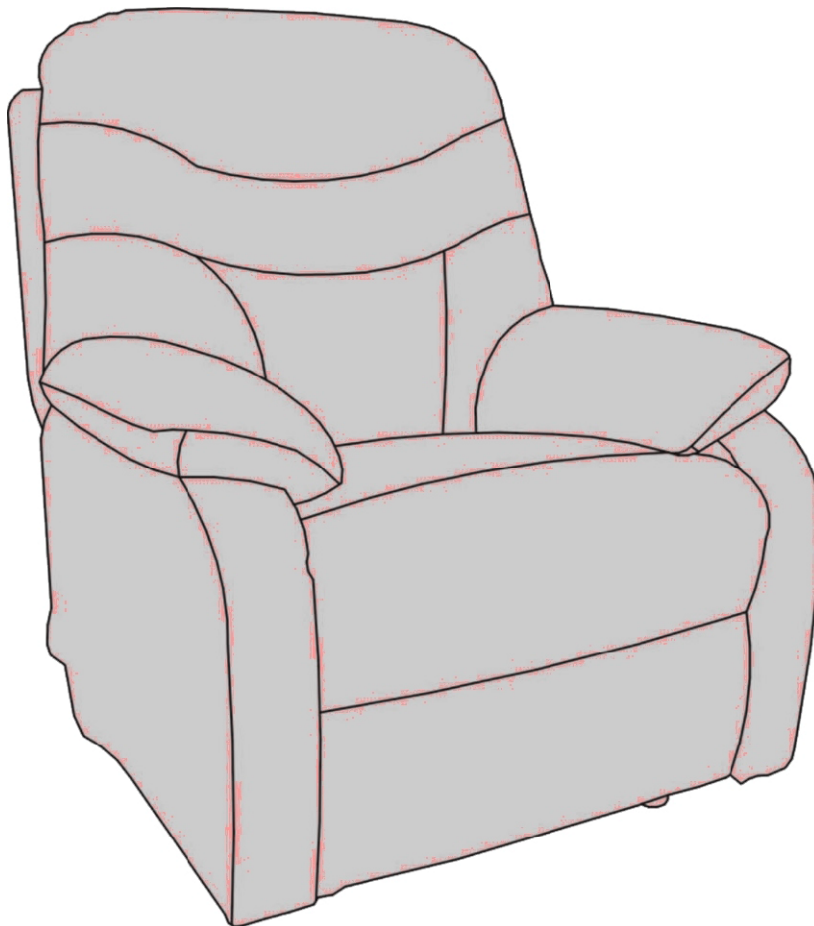


Shop
for...

shopfor-less.co.uk

Hebden Manual Recliner

Assembly & Operating Instructions



Please read these instructions carefully before assembling or operating this product.
Ensure you are familiar with all of the safety and operating instructions.

Introduction

The Restwell range of massage armchairs are designed to be comfortable and stylish whilst offering excellent value for money.

The armchairs come in a variety of fabrics and styles to suit most decors, and are made to the highest quality and are CE marked.

The weight limit for this armchair is 21 stone (136kg).

Restwell is a brand of Drive Medical. Drive Medical is an ISO 9001 certified company.

For more details about our products please see your local dealer.

Important Safety Information

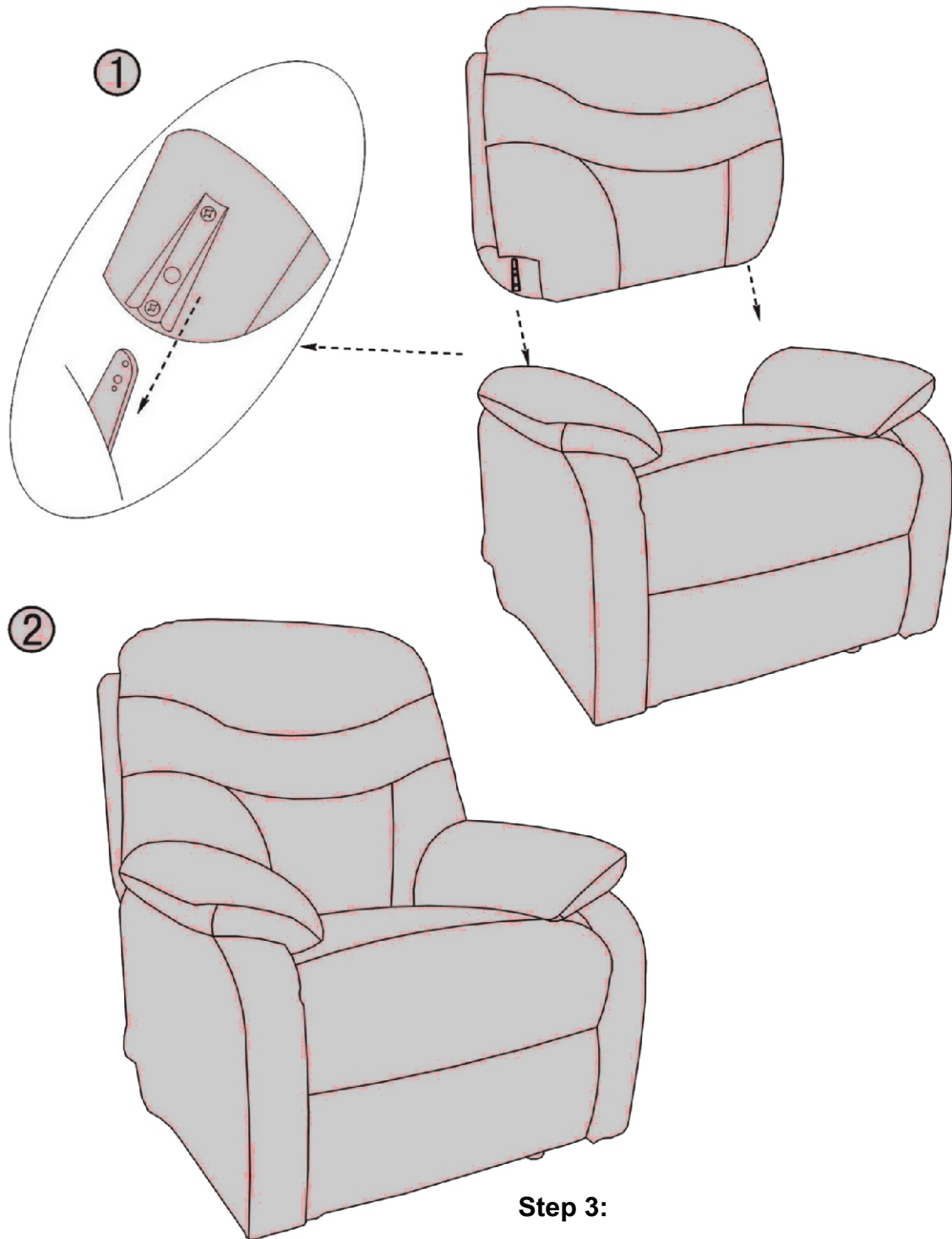


Please read all of these instructions fully before assembly or operation.

- Unpack and check that you have all of the parts and attachments shown.
- To avoid risk of suffocation to children or animals, dispose of the plastic bags correctly.
- Remove all packing materials and dispose of correctly.
- Assembly is best carried out by 2 people.
- For indoor household use only.
- Ensure that only Drive parts are used on the armchair. Periodically visually inspect the handset and power cord for signs of wear, chafing or cracks.
- When reclining the armchair, ensure that you will not collide with anybody behind you.
- Carelessness Causes Fire. Caution should be taken to avoid fire. Please ensure that all cigarettes and matches are properly extinguished. Please be careful of other fire hazards such as electric and gas fires, etc nearby.
- The weight limit on the armchair is 21 stone (136 kg). Please ensure that only one person uses the massage chair at any one time.
- Do not use the massage chair in dusty, humid or damp environments as this could affect the electrical and mechanical parts of the armchair. The armchair may also be sensitive to temperature changes. If possible, try to gradually change the environment temperature. If this is not possible, do not use the armchair for the first hour after the temperature change.
- Be careful with the cables on the massage chair. When plugging/unplugging parts, always grip the connectors (not the cables). Ensure that cables are free, not taut or wound around, and that there is no risk of cables being caught, snagged or chafed.
- Keep your body relaxed during the massage. If you require a more gentle massage place a blanket or towel on the chair behind you.
- Please consult your doctor before using the massage chair if you are convalescing, pregnant or have malignant tumour(s), or high fever.
- If you suffer from any abnormal and/or serious pains when using the massage chair, switch off the massage function and consult your doctor.
- If any of the following occur, switch off the massage chair and remove the power supply from the mains:
 - The massage chair does not work or has got wet.
 - The fabric of the massage chair is damaged and parts are exposed.
- This appliance is not intended for use by persons (including children) with reduced physical, sensory or mental capabilities, or lack of experience and knowledge, unless they have been given supervision or instructions concerning use of the appliance by a person responsible for their safety. Children should be supervised to ensure that they do not play with the appliance.

Keep these instructions for future reference.

Chair Assembly Instructions



Step 1:

Line up the backrest with the receiver brackets on the chair (as shown in the diagram)

Step 2:

Press down on both sides of the backrest until it locks in position, which can be heard by an audible click.

Connect the white connector on the backrest to the white connector on the base unit.

Step 3:

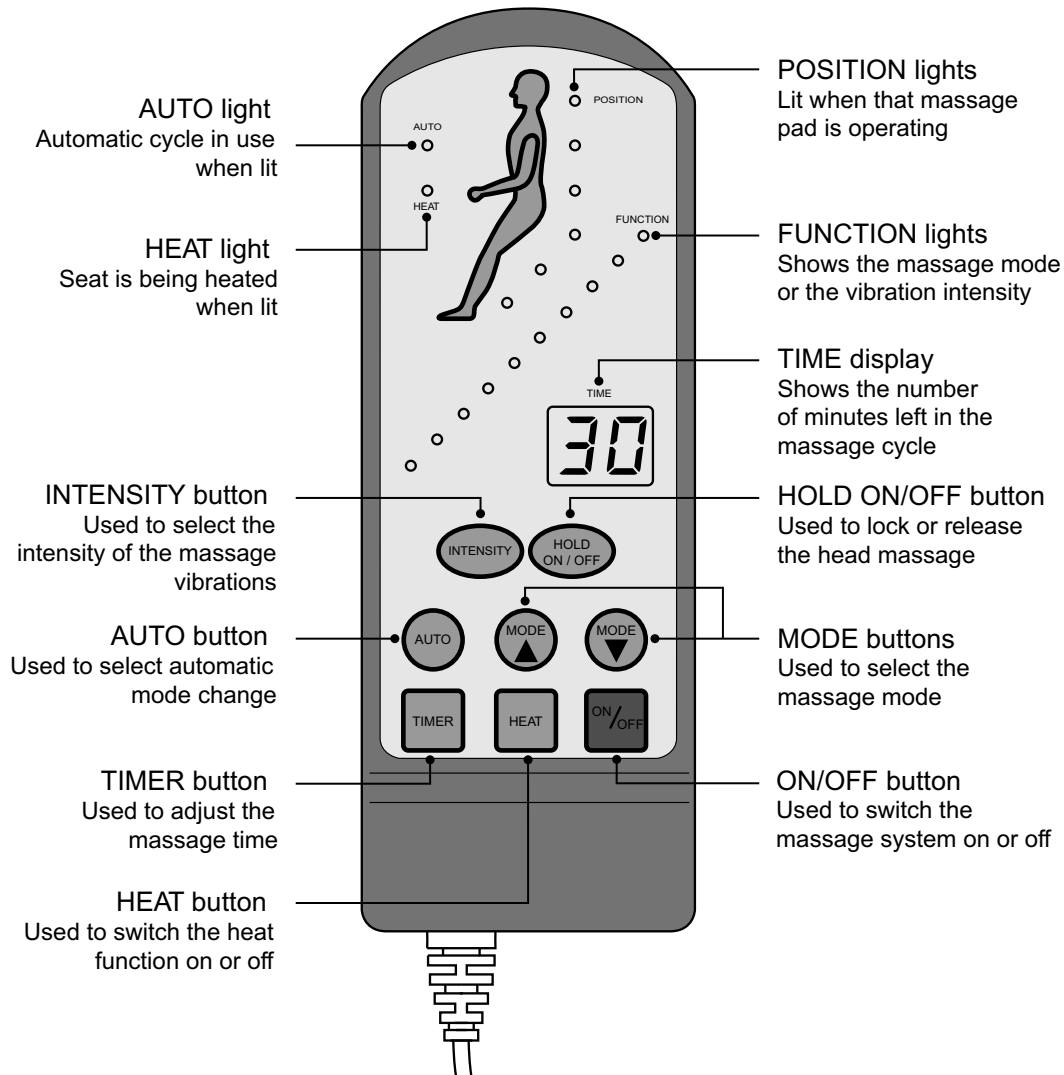
Connect the massage handset to the large black connector on the base unit.

Connect the power supply in to the small black DC connector on the base unit.

Step 4:

Plug the power supply and the mains plug in to the mains socket and switch both plugs on.

Massage Chair Functions



- Press the ON/OFF button to switch the massage unit on. The massage unit will start with a 30 minute massage programme which automatically alters the massage mode every minute. Press the ON/OFF button again to switch off the unit.
- Press the HEAT button to switch the heat function on. The HEAT light will be lit when this function is on. Press the HEAT button again to switch the heat function off.
- To adjust the time which the massage unit will run for (shown on the TIME display) press the TIMER button. The time will then increase up to a maximum of 99 minutes, after which pressing the TIMER button will reset the time to 1 minute.
- Press the AUTO button to switch the automatic mode cycle function off, which stops the unit from changing massage mode every minute. Press the AUTO button to switch on the automatic mode cycle function. The AUTO light is lit when the automatic mode cycle function is on.
- Press one of the MODE buttons to move up or move down a massage mode. The current massage mode is shown by one of the ten FUNCTION lights being illuminated.
- Press the INTENSITY button to increase the intensity of the massage vibrations. After pressing the button, the new intensity will be shown momentarily by illuminating a number of the FUNCTION lights (the number lit depends on the intensity. Once the intensity is at maximum, pressing the button again will reset the intensity to it's lowest level.
- Press the HOLD button to lock the head massage in it's current state. Press the button again to release the lock.

Care and Maintenance

Storage:

- Keep the massage chair dry and clean. Use a dust sheet to protect the massage chair if it will not be used for a long period.
- Do not expose the chair to strong sunlight or high temperatures, as this could cause the fabric to fade.
- When not in use, switch the massage unit off and disconnect from the mains.
- Do not put any heavy articles on to the armrests or footstool as this could damage the armchair and/or cause it to become unstable. Do not sit or stand on the armrests or footstool.

Cleaning:

- Do not rub the surface of the chair with hard or coarse objects.
- The wooden parts of the chair may be cleaned with a duster or dry cloth. Polish should not be used as this can cause abrasion of the wood.
- Use a damp cloth with mild detergent to clean the fabric upholstery and steel frame. Then wipe with a dry cloth. Do not use detergents containing solvent as this could damage the fabric.
- Only use a dry cloth to wipe the handset.

Troubleshooting

Symptom	Cause	Possible solution
Noisy operation	Noise occurs during use. Noise from pulsator, especially when no one is sat in the chair.	These are normal sounds during operation. Possibly from friction between the massager and the upholstery.
The chair will not switch on	No power. Loose or missing connection.	Check the power is on. Check the PSU is fully in the mains socket. Check the handset is connected.
Footstool	Footstool will not vibrate.	Check footstool is connected to the chair.

Fair Wear and Tear Policy

Your new armchair and footstool is covered by the warranty opposite. Please note however this warranty does not include:

- Damage from misuse, and use over the specified weight limit.
- Material fading over time or through sunlight.
- Damage from spills or leaks.
- Collision damage (rubbing against walls, etc).
- Accidental tears and damage.
- Cigarette and match burns.

Warranty

Your Restwell massage armchair and footstool comes with a comprehensive twelve-month warranty. For warranty issues and claims please contact your Drive Medical dealer. The warranty conditions are below:

1. Any work or replacement part installation must be carried out by an authorised Drive Medical dealer / service agent.
2. To apply the warranty should your armchair require attention please contact the your Drive Medical dealer / service agent.
3. Should any part of the armchair require repair or full or part replacement as a result of a manufacturing or material defect within twelve months of receiving the armchair, parts will be supplied free of charge. Note: The guarantee is not transferable
4. Any repaired or replaced parts will be covered by this warranty for the balance of the warranty period on the armchair.
5. Parts replaced after the original warranty has expired will be covered by a three month warranty.
6. Consumable items supplied will not generally be covered during the normal warranty period unless such items require repair or replacement clearly as a direct result of a manufacturing or material defect. Such items include (among others): upholstery, batteries
7. The above warranty conditions apply to brand new chairs. Chairs supplied as secondhand by Drive Medical generally carry a six-month warranty. If you are unsure whether your chair is covered, check with the service agent / dealer.
8. Under normal circumstances, no responsibility will be accepted where the armchair has required assistance as a direct result of:
 - a. The armchair part not having been maintained in accordance with the manufacturer's recommendations.
 - b. Failure to use the manufacturer's specified parts
 - c. The armchair or part having been damaged due to neglect, accident or improper use
 - d. The armchair or part having been altered from the manufacturer's specifications or repairs having been attempted before the service agent / dealer is notified.

In the event of your armchair requiring attention, please contact your service agent / dealer and give all relevant details so they can act quickly. Please contact Drive Medical for advice if you do not know where the armchair was originally purchased from.

The manufacturer reserves the right to alter without notice any weights, measurements or other technical data shown in this manual. All figures, measurements and capacities shown in this manual are approximate and do not constitute specifications.



'Restwell' is part of the Drive Medical Group

Restwell - Drive Medical Group
Ainley's Industrial Estate, Elland, West Yorkshire HX5 9JP

www.restwell.co.uk