

• Video monitoring on Android Phone

To use the Android Market, Android phone must be connected to the Internet.

Mysec24 Lite is free; you can download it without charge.

Once you download it, it's immediately installed on your Android phone. Then follow the steps below:



Download AP Software
From Android "Market"



Install AP Software to
your Android Phone



AP Software
Installation in progress



Run AP Software & press
"Add" to add IP Camera



Key in ID & PWs
Of the IP CAM



Save these settings
For instant Viewing



Live video from IP CAM
are now show in screen

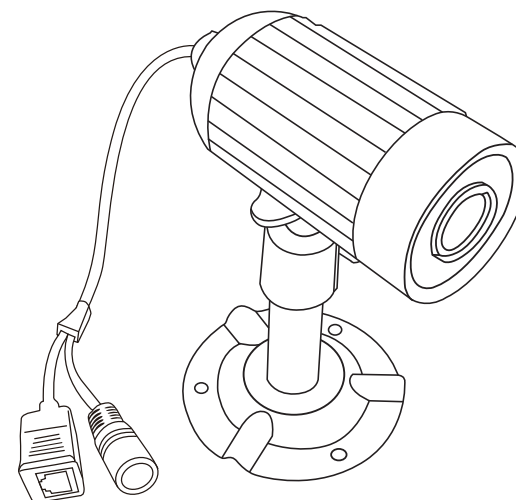


Press snapshot will save
Photo to phone memory

User's Manual

Model No.: IP-562M

Motion-JPEG IP Camera with Plug n Play Network Remote Viewing Function



PLEASE READ CAREFULLY AND SAVE

This manual contains important information about this product's operation. If you are installing this product for others, you must leave this manual -or a copy- with the end user.

Contents

What You Get	1
FCC/ CE	2
Knowing the Camera	3
Camera Installation	3
Product Specification	6
Software Installation	7

What You Get

- (1) IP Camera
- (2) Power adaptor
- (3) Camera stand
- (4) Network cable
- (5) Screws
- (6) Software CD
- (7) Manual

3. IP Cam Mobile

Please download the dedicated video monitoring software for Apple OS4 and Android operation system.

For iPhone, make a software search from APP store and look for “ MySec24 Lite ” then install the software to the phone accordingly.

For smart phone with Android system, make a software search from Android Market and look for “ MySec24 Lite ”, then install the software to the phone accordingly.

Please refer to the example for iPhone Android phone below and refer to the user’s manual of your phone for more operation details.

• Video monitoring on iPhone

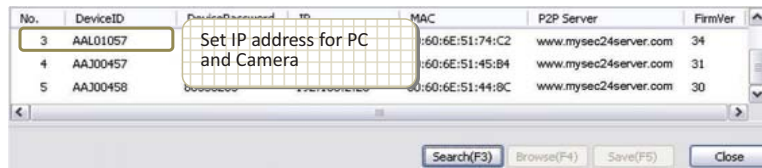
To use the App Store, iPhone must be connected to the Internet.

MySec24 Lite is free; you can download it without charge.

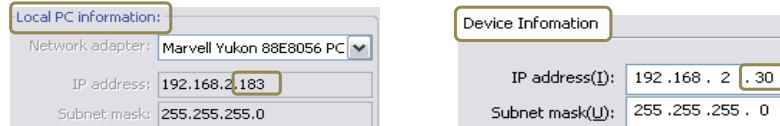
Once you download it, it’s immediately installed on your iPhone. Then follow the steps below:



- 1 Please click "search", then select an "IP cam" on the list.



- 2 Make sure the IPs of LAN and IPCAM are the same, except the last block



Changing IP Address in Windows

Click Start button → Right click My Network Places icon → click Properties → Right click Local Area Connection icon → Click Properties → click Internet Protocol[TCP/IP] icon → click Properties



Important Safety Precautions

Please read before installing and using this product

Damages caused by non-compliance with this operating manual will void the warranty! We will not assume any liability for damages to items or persons caused by improper handling or non-compliance with the safety notices! Any warranty claim will be null and void in such cases.

1. Do not drop, puncture or disassemble the camera or receiver; otherwise the warranty will be voided.
2. Avoid all contact with water, and dry hands before using.
3. Never tug on the power cords. Use the plug to unplug it from the wall outlet.
4. Do not expose the camera or receiver to high temperature or leave it in direct sunlight. Doing so may damage the camera or cause camera temporary malfunction.
5. Use the devices with care. Avoid pressing hard on the camera or receiver body.
6. For your own safety, avoid using the camera or power off the camera when there is a storm or lightning.
7. Remove the power adapter during long periods between usages.
8. Use only the accessories and power adapters supplied by the manufacturer.
9. To meet the regulations pertaining to parental responsibility, keep the devices out of the reach of infants.
10. Check power cables, do not get crushed or damaged by sharp edges whenever the devices are in operation.



FCC Compliance Statement:

This device complies with Part 15 of the FCC Rules. Operation is subjected to the following two conditions:
(1) this device may not cause harmful interference, and
(2) this device must accept any interference received, including interference that may cause undesired operation.



Products with CE Marking comply with EMC Directive (2004/108/EC)

Issued by the Commission of the European Community. Compliance with these directives implies conformity to the following European Norms:
EMC: EN55024
LVD: EN60950

FCC/CE WARNING

This equipment has been tested and found to comply with limits for a Class B digital device, pursuant to Part 15 of the FCC rules. These limits are designed to provide reasonable protection against harmful interference in residential installations. This equipment generates, uses, and can radiate radio frequency energy, and if not installed and used in accordance with the instructions, may cause harmful interference to radio communications.

However, there is no guarantee that interference will not occur in a particular installation. If this equipment does cause interference to radio or television equipment reception, which can be determined by turning the equipment off and on, the user is encouraged to try to correct the interference by one or more of the following measures:

- Reorient or relocate the receiving antenna.
- Move the equipment away from the receiver.
- Plug the equipment into an outlet on a circuit different from that to which the receiver is connected.
- Consult the dealer or an experienced radio/television technician for additional suggestions.

You are cautioned that any change or modifications to the equipment not expressly approved by the party responsible for compliance could void Your authority to operate such equipment.

Disposal

If the camera system no longer functions or can no longer be repaired, it must be disposed of according to the valid statutory regulations. Disposal of spent batteries / accumulators:

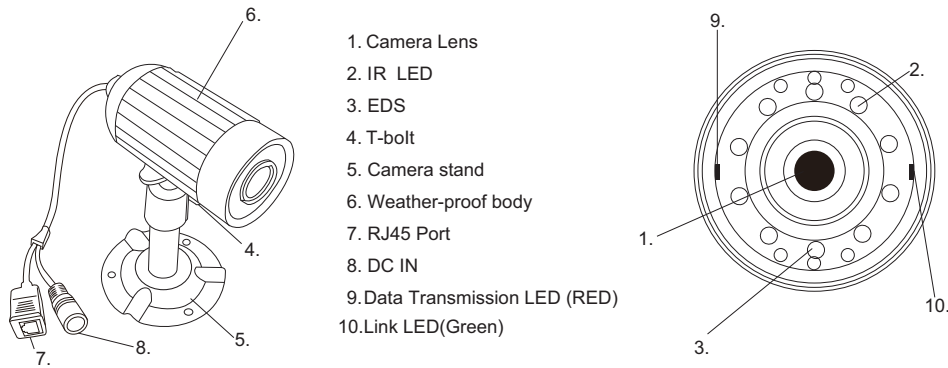
You are required by law (Battery Ordinance) to return all spent batteries and accumulators. Disposing of spent batteries/accumulators with common household waste is prohibited! Batteries/accumulators that contain hazardous substances are marked with the symbols on the side. These symbols indicate that it is prohibited to dispose of these batteries/ accumulators in the household waste.

The abbreviations for the respective heavy metals are: Cd= cadmium, Hg= mercury, Pb= lead. You can return spent batteries and accumulators that can no longer be charged to the designated collection points in your community, outlets or wherever batteries or accumulators are sold. Following these instructions will allow you to fulfill the legal requirements and contribute to the protection of our environment!



Knowing the Camera

IP Camera

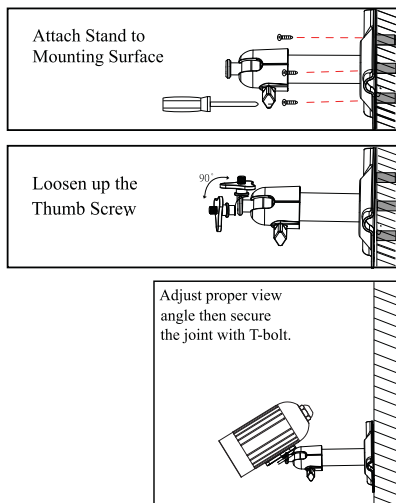


Camera Installation:

Select a suitable installation and monitoring site. A suitable installation site has the following features:

- Dry
- As Dust-Free as Possible
- Solid Surface without Vibration
- Good Air Circulation
- Electrical Outlet in Close Vicinity

- ☞ Camera should not directly face the sun or other bright light.
- ☞ Prior to mounting the camera, it is recommended that you test the operation and location of the camera.



Fastening the wall bracket

- Select the desired mounting place (near power outlet if possible)
- Use supplied screws to attach wall bracket to wall or suitable platform. Use dowels if necessary.
- Align the camera and screw the T - bolt tight.

B. Basic Settings

Environment: Night	Frequency: 60Hz	<input type="checkbox"/> Flip
Resolution: 320X240	Quality: Middle	<input checked="" type="checkbox"/> Mirror

Environment: Night/ Indoor/ Outdoor*

Frequency: 50 Hz or 60Hz based on your AC power's frequency.

USA and countries in South America: 60Hz

Taiwan: 60Hz

Japan: 50Hz / 60Hz both

Most of countries in European / Middle East / Africa: 50Hz

* Notice: For As this IP Cam is equipped with advanced IR-cut filter switcher to automatic day/night filter switching, it is suggested to set the setting to "Night" mode for , for optimal viewing result.

C. Authentication

Authentication:	
Viewing Account:	admin
Viewing password:	*****

Set up your personal account and password. Once been set, It can only be changed or deleted under local network.

Notice: User Authority is for the security use, we strongly suggest you to set up your own ID and password once you begin to use the product.

2. 2 Connect IP Cam and computer

Use Search Tool to start the connection

Sec24 Security System Search Tool(V4.0.0.24)

Local PC Information:
Network adapter: Marvell Yukon 88E8056 PC

Device Information:
IP address(I): 192.168.2.30
Subnet mask(U): 255.255.255.0
Gateway(G): 192.168.2.1
DNS1: 168.95.1.1
DNS2:

Authentication:
Viewing Account:
Viewing password:

Environment: Night
Frequency: 60Hz
Resolution: 320X240
Quality: Middle

Device list: (5 pcs)

No.	DeviceID	DevicePassword	IP	MAC	P2P Server	FirmVer
1	AAAA0002	12345678	192.168.2.30	00:60:6E:51:79:42	www.mysec24server.com	35
2	AAJ00458	86356283	192.168.2.26	00:60:6E:51:44:8C	www.mysec24server.com	30
3	AAJ00457	58156807	192.168.2.29	00:60:6E:51:45:84	www.mysec24server.com	31

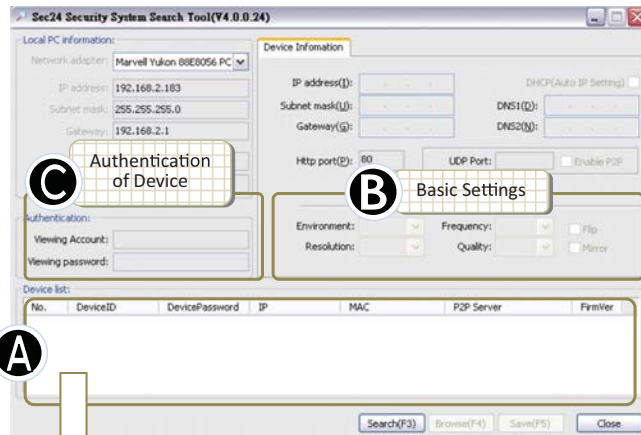
2. Search Tool

2.1 How to use Search Tool

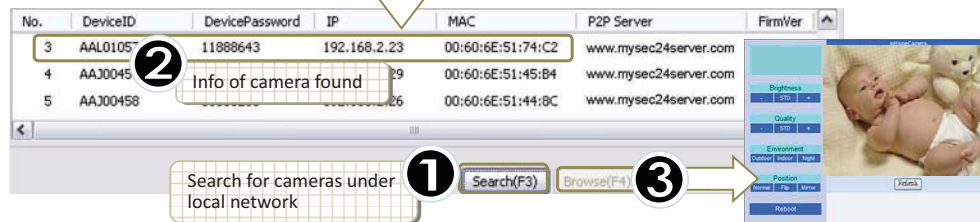
Click "IPCAM Set up"

Search Tool helps setting up your IP cam directly.

Note! This software can be operated under the local network only

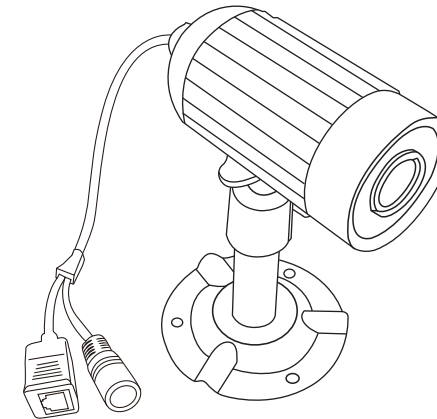


A. Device List



Note: In this preview window, all the changes are directly saved to your device.

- **Brightness**
Select brightness by clicking on "Low", "Standard", or "High".
- **Quality**
"+": for clear picture and bigger file size
"-": for less picture quality and smaller file size
- **Environment**
Please select the "Indoor" or "Outdoor" or "Night" mode, depending on the environment condition.
- **Position: Normal/Flip/Mirror**



Legal & Security Warnings

Be sure to comply with the country or local laws in regards to publishing recorded images / videos or surreptitious viewing and videos monitoring. Users are responsible for the secure of camera ID & passwords; and we strongly recommend all users setup user's ID & password

Read this instructions before you begin

During the installation, the software will test your PC's firewall settings. If prompted to allow access to the network, you should answer "Allow" or "Yes"

1

- (1) IP Camera
- (2) Power adaptor
- (3) Camera stand
- (4) Network cable
- (5) Screws
- (6) Software CD
- (7) Manual

2

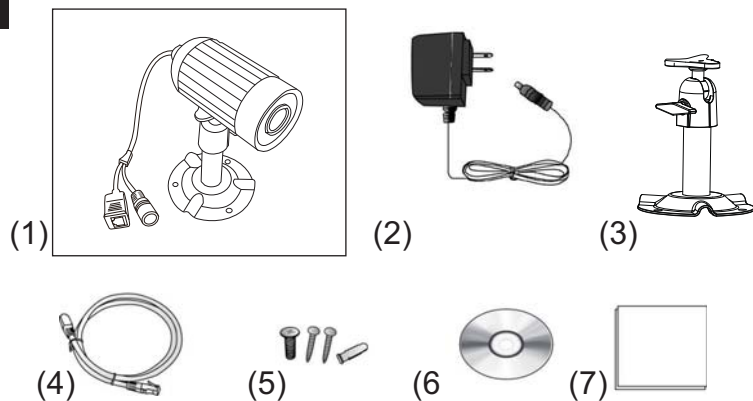
- Setup the camera
- (1) Follow the instruction to assemble the stand and also onto the camera
- (2) The camera can be placed on flat surface or mounted up on ceiling or wall

3

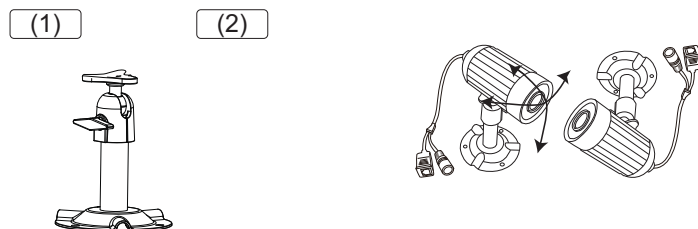
- Set up
- (3a) Connect the camera to power adaptor and network cable
- (3b) or (3c) Connect the other end of the network cable to LAN port on internet router or Wireless internet device

! This product requires a common subnet environment supported by Router. Look for WAN port on your internet device; if no such port, please acquire a Router that has a WAN port build in and then connect the camera with the router's LAN port.

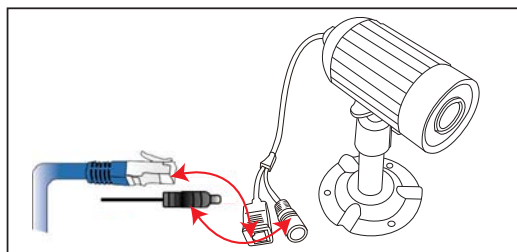
1



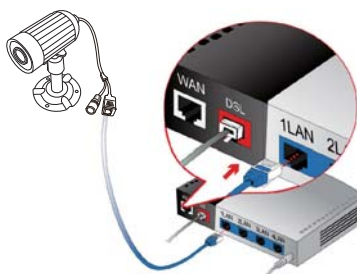
2



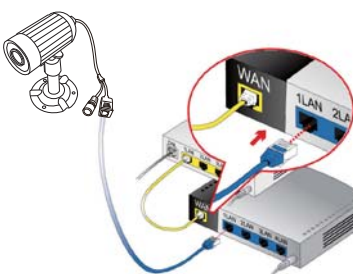
3 a



3 b



3 c



5

Shortcut function:

Right click on the display channel

- **Disconnect** :
Disconnect the device.
- **Stretch video** :
Stretch video display.
- **Edit device** :
Edit device Basic Info/Alarm Setting and Schedule recording.
- **Delete this device** :
Delete the selected device.
- **Snapshot** :
Take picture of the selected device.
- **Manual recording** :
Start recording instantly.



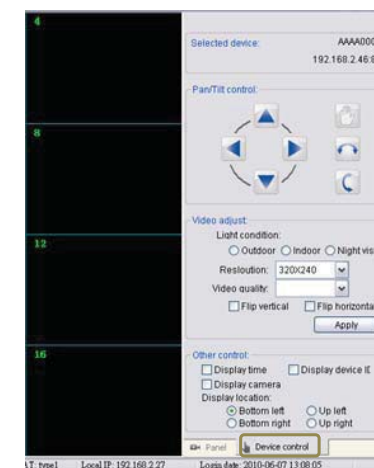
E. Device Control

- **Selected device** :
Shows the IP address/ Device ID of the selected camera
- **Pan/Tilt Control**
For control the camera angle. (For selected model only)
- **Video adjust** :
Adjust light condition/resolution/video quality.

Light condition: Indoor/Outdoor/Night vision

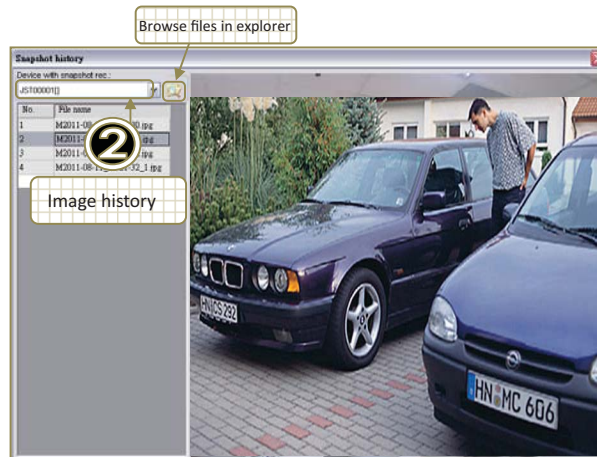
Resolution : 640*480/320*240/160*120

Video quality: From highest to lowest



History of snapshot

- ❶ Open snapshot folder or delete image
- ❷ Select image



About Sec24 Security System:

Version of your IP Cam System and User's Manual.



D. Display Channels :



Product Specification

System Specification	
Sensor Type	1/4" Color CMOS sensor
Picture Element	640x480 pixels
Lens	3.6 mm
Viewing Angle	H:53° V: 40°
Video Resolution	VGA/QVGA/QQVGA
Frame Rate/Sec.	VGA@15FPS/QVGA & QQVGA@25FPS
CompressionFormat	M-JPEG
Weatherproof housing	IP-66
Number of IR LEDs	10
Night-viewing Range	Up to 5 Meters
Internal Connection	LAN
Network protocols	TCP/IP,UDP,uPnP, DHCP
Camera Housing	Metal Camera housing & Stand
Power Consumption	IR Off: 190 mA/ IR-On: 330 mA
Dimension (Without Stand&Cable)	84 Ø 41.5mm
Weight (Without Stand)	188 gm
IR-Cut Filter	Built-in

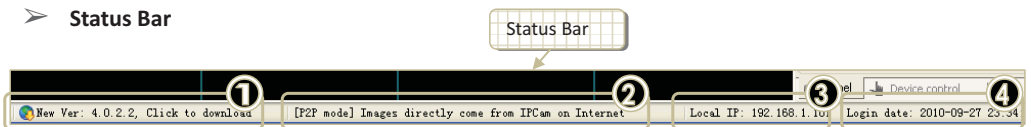
1. Sec24 Security System

Sec24 Security System is a PC software that allow users to view video of IP cameras on PC from local or remote location via Internet connection, this system also provide advances features like camera configuration, video recording to PC, alarm and E-mail alert functions.


1.1 How to install

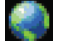
Insert the software CD to your CD-R device, start the PC software installation according to your language by check the disc content and click the "Sec24 Security System_EN" file to open the start up page.


After launching the software setup program then follow the steps below to complete the installation.



- ① When new version is available, this field will show it. Click to enter download page.
- ② This field shows the link mode of specified video channel. It is a texture description of the icon on the up-right corner of video display. :

[LAN Mode] Your PC and IPCam are on local area network. (icon )

[P2P Mode] Images directly come from IPCam on Internet. (icon )

[Relay Mode] Images go through relay server, under this mode, it is normal that the video frame rate received from IPCAM are slower than in LAN or P2P Mode. (icon )

- ③ This field shows PC's IP.
- ④ This field shows the date and time when IPCam executed.

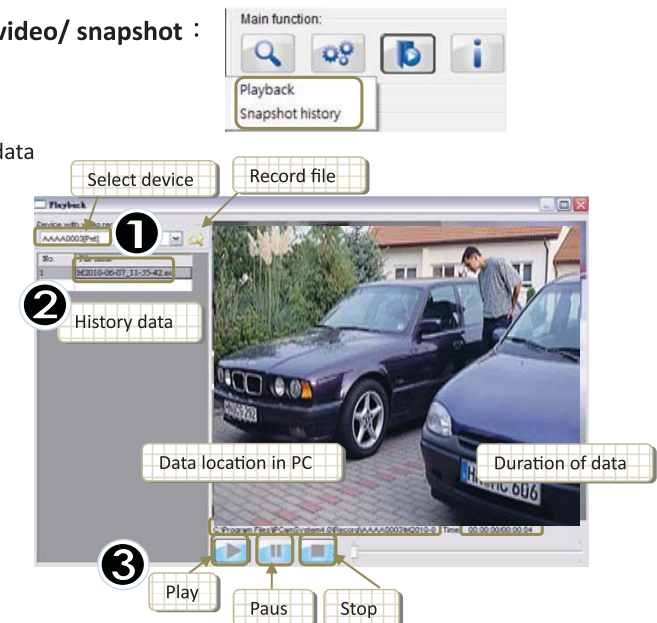
➤ Confirm when system close



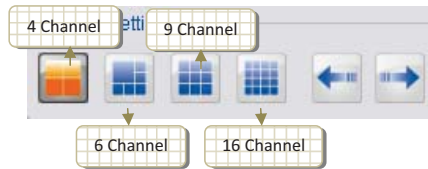
History of video/ snapshot :

Playback video

- ① Select device
- ② Choose history data
- ③ Playback back



B. Display Setting



Full Screen Mode:

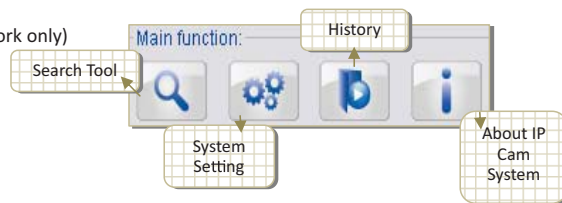
Double left click mouse of selected channel to switch to full screen mode, double left click again to switch back.

C. Main function



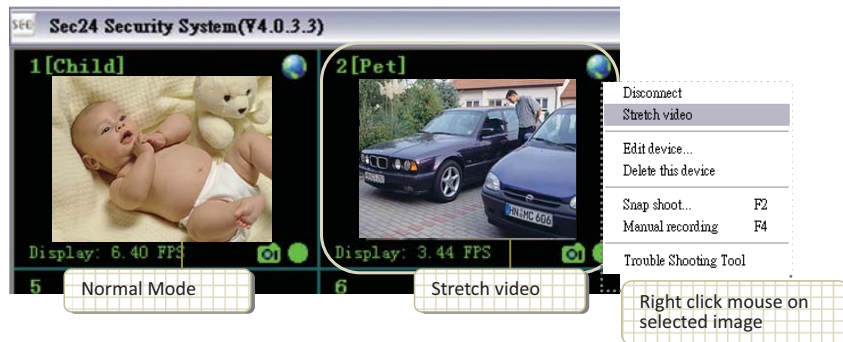
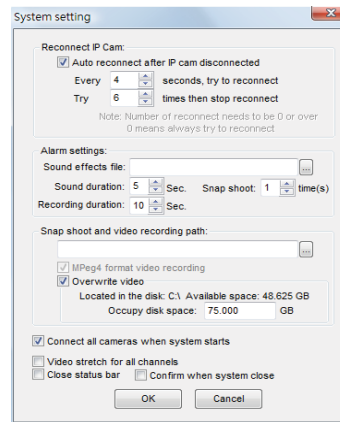
Search Tool :

Use to set up IP Cam (Local network only)



System Setting :

- **Reconnect IP Cam :**
Auto reconnects IP Cam when disconnected.
- **Alarm Setting**
 - Sound effects file :**
Select your preferable sound when alarming.
- **Snap shot and video recording path:**
Setup save folder for the recorded files and snapshots.
- Overwrite video :**
Set up the occupy disk space.
- **Set up the system start status:**
video stretch/status bar/confirm when system close
- **Stretch Video**



1.1. 1 Click "Next" to start the installation.



1.1. 2 Click "Next"



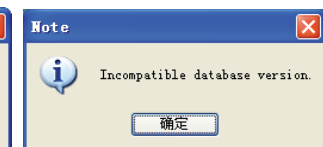
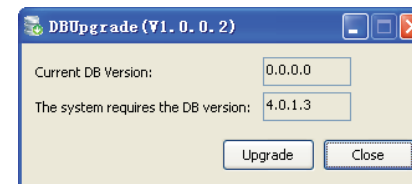
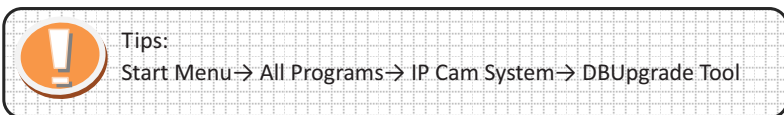
1.1. 3 Click "Install"



1.1. 4 Click "Finish" to complete Sec24 Security System installa on.

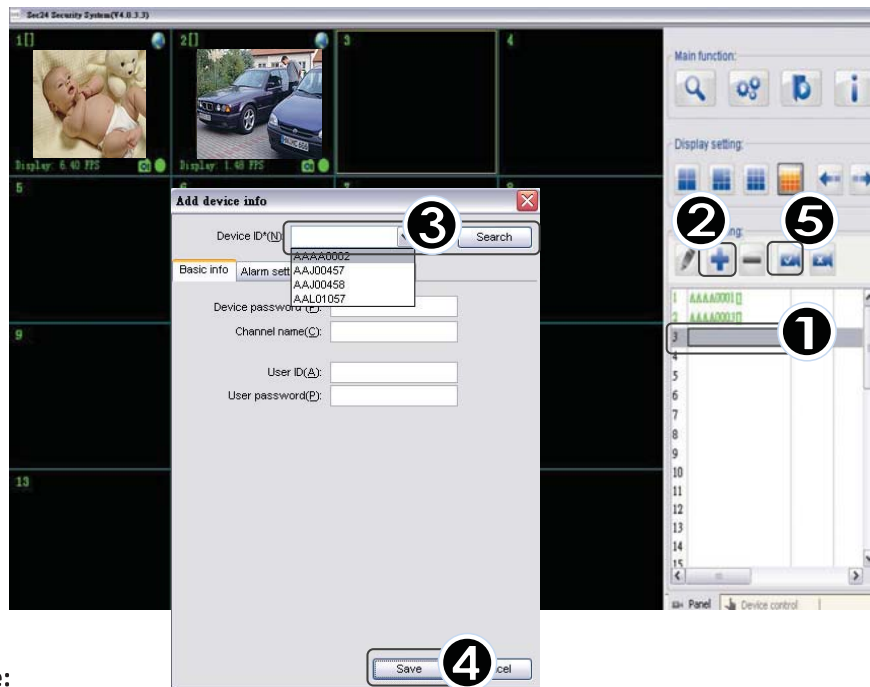


Run DB Upgrade Tool to check if your application is ready for an upgrade. Click Upgrade if it prompts "**Incompatible database version**" as figure. Then close DB Upgrade Tool and restart IP Cam System.



1.2 How to Add a device into Sec24 Security System

- ❶ Select an empty channel
- ❷ Click 「+」 Add a device」
- ❸ Press 「Search」 or type in ID and Password of your device
(Note!! 「Search」 function can be used under local network only)
- ❹ Press 「Save」
- ❺ Click 「Start all cameras」 in IPCam setting



Notice:

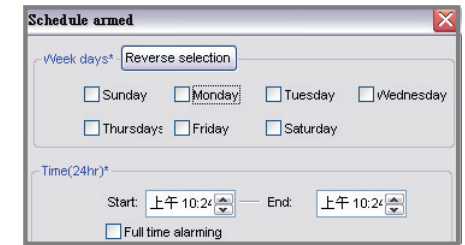
1. Device can be searched automatically. Please check the Power LED signal if no device found.

➤ Schedule Alert

- Add one duration
- Edit selected duration
- Delete selected duration

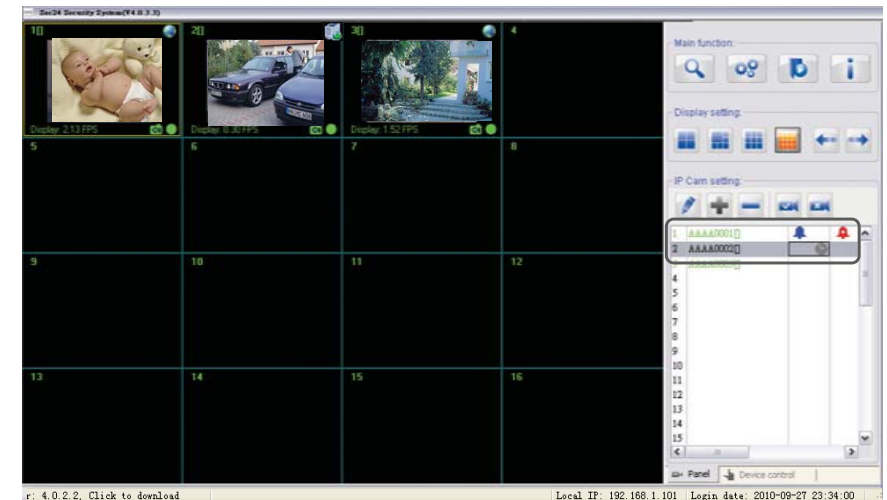
Select "Add one duration" to schedule alarm

Set days and time or full time alarming



The icons below shows the status on this device

- Alarm has been enabled
- Alarm detected on channel
- Schedule recording



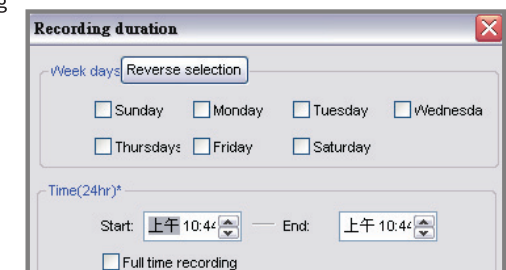
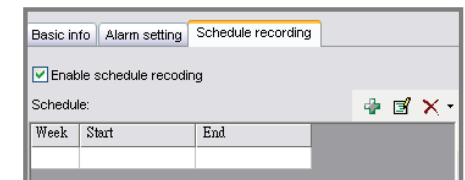
Schedule Recording :

➤ Select enable schedule recording

- Add one duration
- Edit selected duration
- Delete selected duration

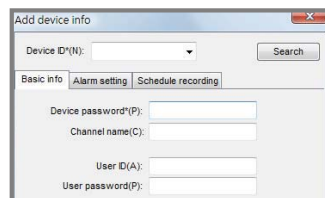
Select "Add one duration" to schedule recording

Set days and time or full time recording



Basic Info

- **Device ID:** Each individual ID shown on back of IP Cam
- **Device Password:** Each individual password shown on back of IP Cam
- **Channel Name:** Edit camera name.
- **User ID/User Password**
Each user's personal ID and password



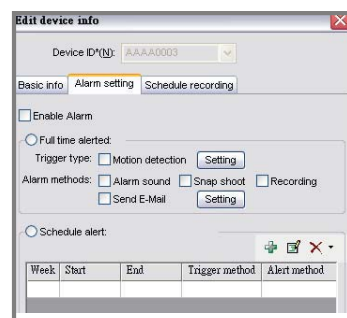
Dialog box titled "Add device info" with fields for Device ID(N), Device password(P), Channel name(C), User ID(A), and User password(P). It has tabs for Basic info, Alarm setting, and Schedule recording.



Alarm Setting :

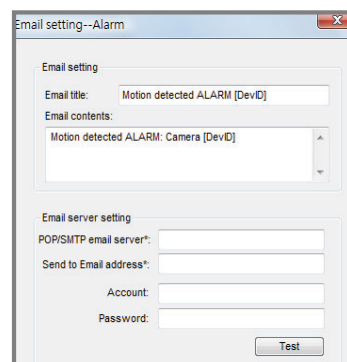
After selecting Enable Alarm, click Motion detection setting to adjust the sensitivity and Email setting.

- **Enable Alarm**
Set to "Full time alerted" or "Schedule alert"
- **Motion detection**
Click "Setting" to adjust motion detection sensitivity

Dialog box titled "Edit device info" with the "Alarm setting" tab selected. It shows options for Enable Alarm, Full time alerted, Trigger type (Motion detection), Alarm methods (Alarm sound, Snap shoot, Recording, Send E-Mail), and Schedule alert.

- **Alarm Methods**
Alarm sound/Snap shot/Recording/Send Email
- **Email setting:**
Refer to your outlook account information of SMTP/Account/Password.

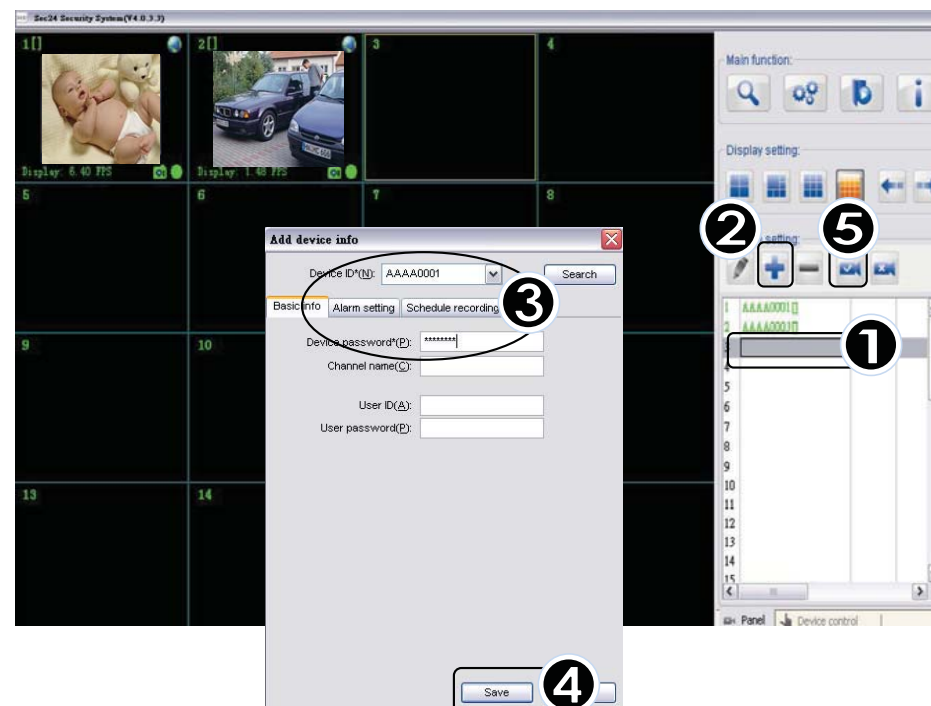


Dialog box titled "Email setting--Alarm" with fields for Email title, Email contents, Email server setting (POP/SMTP email server, Send to Email address, Account, Password), and a Test button.

Note! Email alert can work properly only when Internet is connected on PC.

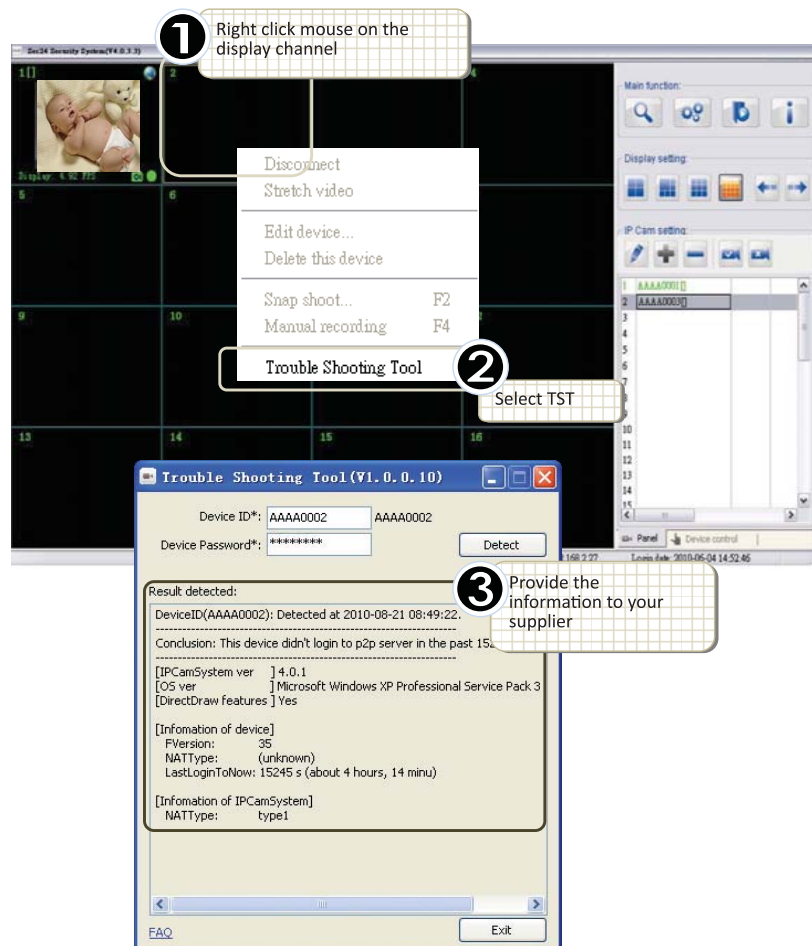
1.3 Video via Internet

- ❶ Select an empty channel
- ❷ Select 「+ Add one device」
- ❸ Type in your Device ID/Password」 (Printed on the product body)
Type in your 「User ID/Password」 (Set up by user, can be edited, please refer to Search Tool)
- ❹ Press 「Save」
- ❺ Click 「Start all cameras」 in IPCam setting

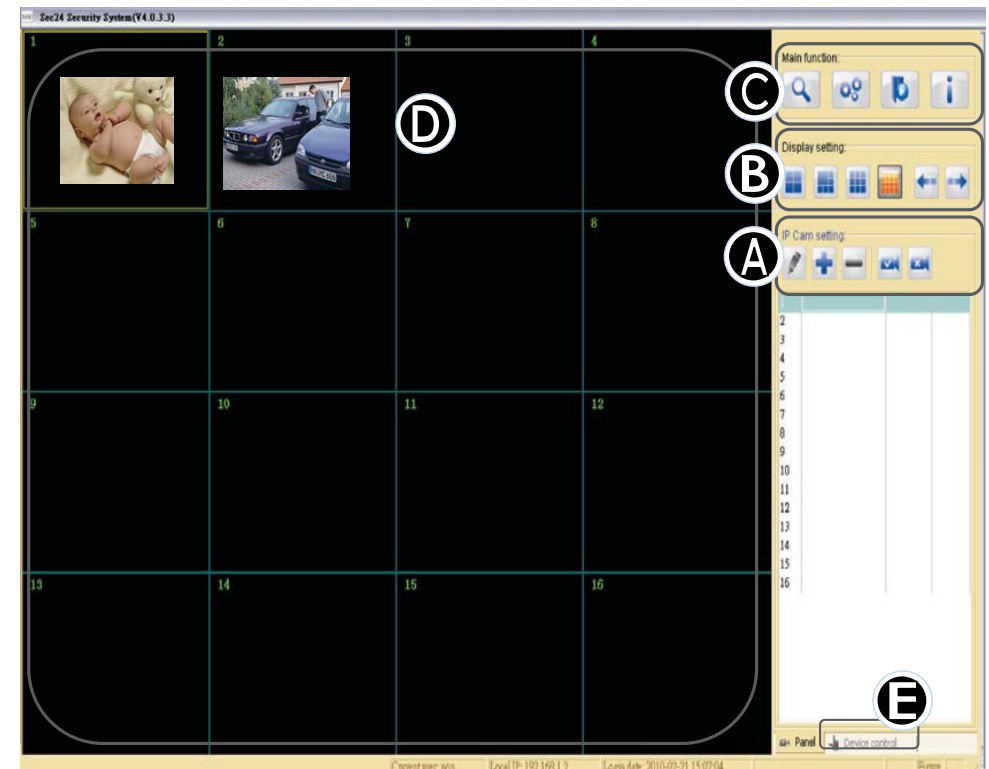


Notice: Make sure the camera is connected to the internet if failed to load video.

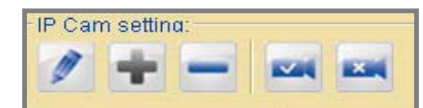
If the problem still can't be solved, follow the steps below and provide the information to your supplier.









1.4 How to use Sec24 Security System



A. IP Cam Setting :



-  **Edit Device Setting :**
Edit device Basic Info/Alarm Setting /Schedule recording
-  **Add one device :**
Add a new device on display channel.
-  **Delete selected device :**
Delete the selected device from display channel.
-  **Start all cameras :**
Start all connection with camera device.
-  **Stop all cameras :**
Stop all connection with camera device.
-  **Edit Device Setting :**
Edit device Basic Info/Alarm Setting /Schedule recording