

Fantec SQ-35U3e

4x 3.5" SATA HDD USB3.0 eSATA

User Manual



Include

- ☆ **Note**
- ☆ **About the Device**
- ☆ **Hardware Installation Guide**
- ☆ **HDD Formatting Guide**

! ATTENTION
New HDD Must Be
Formatted Before Use

1. Note

- eSATA and USB 3.0 connection (downwards compatible with USB 2.0 and USB 1.1)
- Auto Power Saving will sleep/wake the drives with the PC
- Reduce **25%** power consumption with Green Power Design
- Reduce **33%** of HDD Temperature with 80 mm Cooling FAN and smart ventilation design.
- Up to **5Gbps** transfer speed with USB3.0 connection.
- SATA-II interface and HDD supports SATA – I, II, III
- 4 HDDs are operated distinctively, Plug & Play, and Hot swappable
- Each HDD capacity supports up to 3TB in GPT format, W7/Vista
- Windows XP can't support 3TB HDD

Notice:

1. Please read the manual carefully before you begin installing and using this product.
2. This product operates between 0°C to 40°C with a relative humidity between 0% to 80%.
Be sure the unit is operating in a well ventilated environment.
3. Do not block any holes of the ventilation on the product in order to retain the best heat dissipation efficiency possible.
4. Do not place any liquids or chemical hazards near the product.
5. This product operates using a 12V/DC @4A output, 100V~240V/AC input power adapter.
Do not use any other types of AC/DC rating's adapter which differs to the mentioned specifications. Doing so will severe damage the product.
6. The power adapter should be well ventilated and not be covered by any object.
7. HDDs must be well secured and fixed to the HDD-tray before sliding the HDD-tray into the Multi-HDD frame.

2. About the Device

Hardware Overview

Power DC input

Receptor for the provided Power Adapter

- 12V DC, 100-240V AC, 50-60Hz

PC connection interface

USB 3.0	Connect USB 3.0 Cable to computer
eSATA	Connect eSATA Cable to computer

Note: When connecting eSATA and USB3.0 to the PC at the same time, the PC will recognize eSATA.

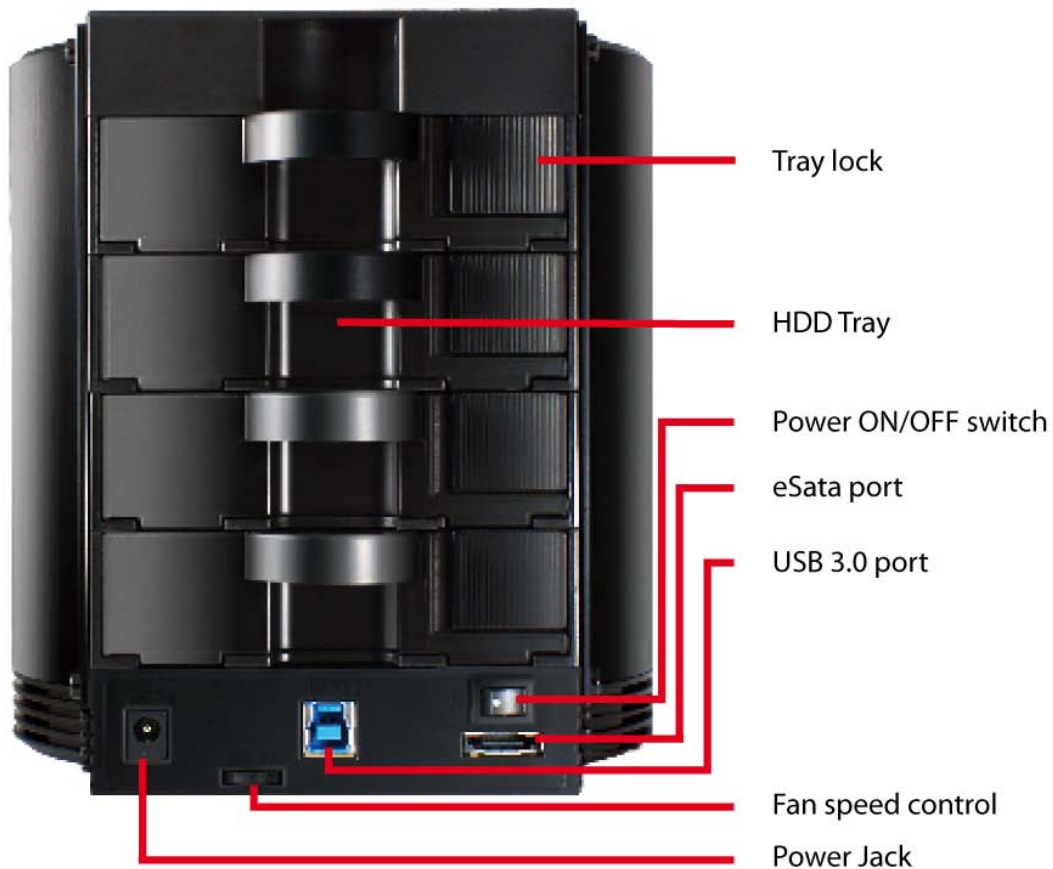
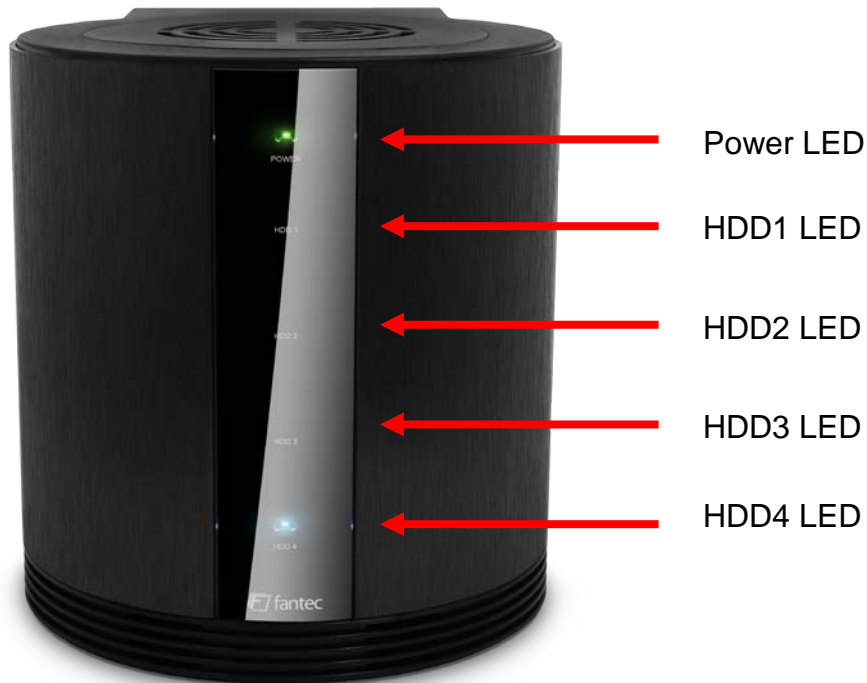
FAN Speed Control

Control wheel	Turn the wheel to control the fan speed
----------------------	---

LED Indication:

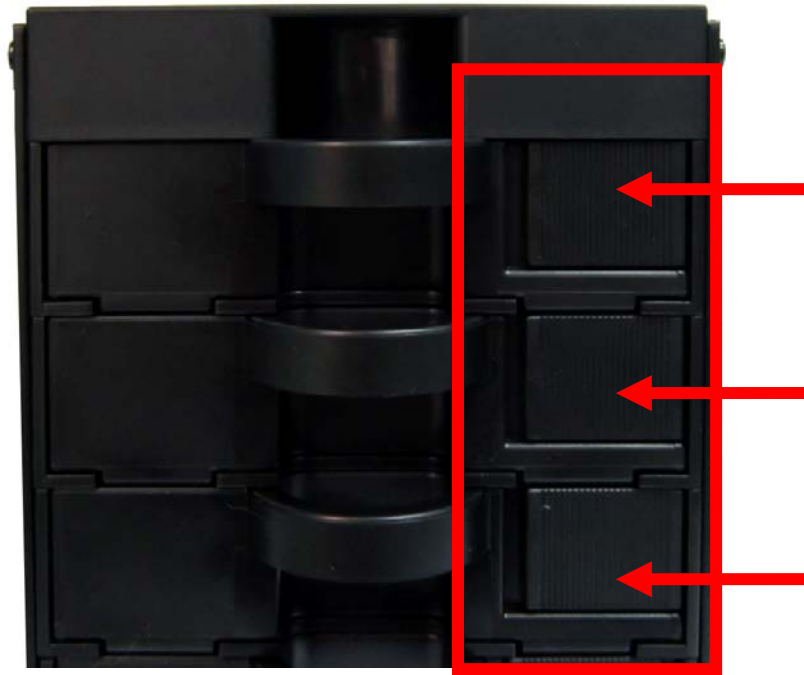
Power LED	Green	ON : Power input OFF: Power Removed
HDD 1 LED	Blue	ON : HDD inserted Flashing: Accessing (Read/Write) OFF: HDD not installed/Removed
HDD 2 LED	Blue	ON : HDD inserted Flashing: Accessing (Read/Write) OFF: HDD not installed/Removed
HDD 3 LED	Blue	ON : HDD inserted Flashing: Accessing (Read/Write) OFF: HDD not installed/Removed
HDD 4 LED	Blue	ON : HDD inserted Flashing: Accessing (Read/Write) OFF: HDD not installed/Removed

Front / Back View



3. Hardware Installation Guide

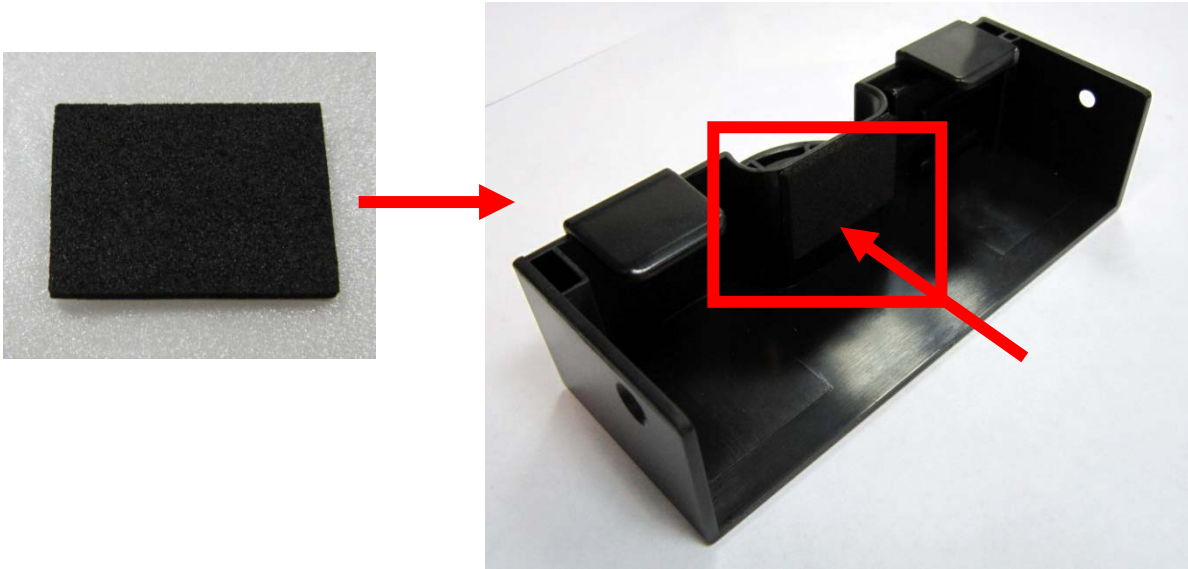
Step1: Push the Locker switch to the left side to unlock the HDD tray.



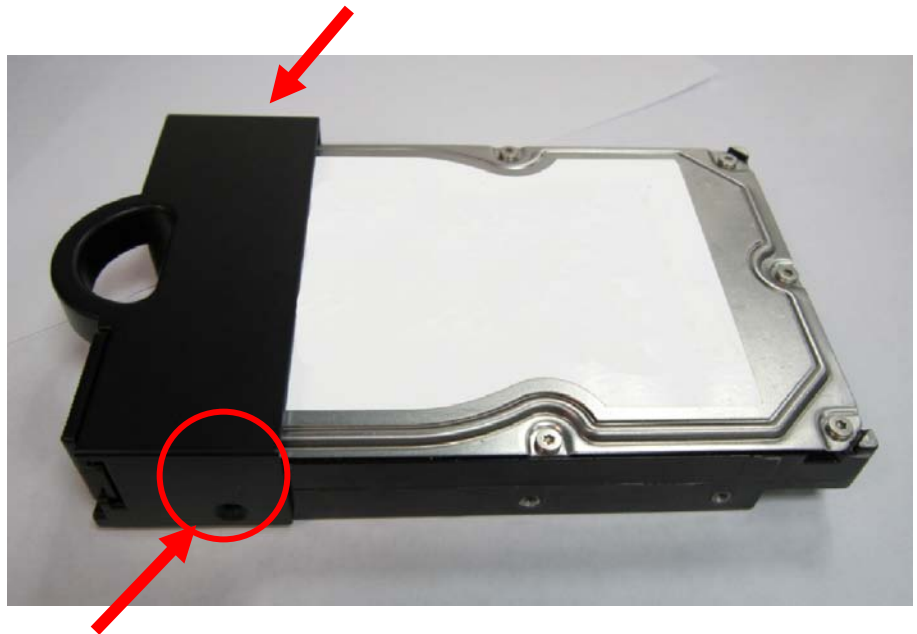
Step2: Take out the HDD trays.



Step3: Gluing the rubber pad to the middle at inner side of HDD tray if your HDD is a little shorter.



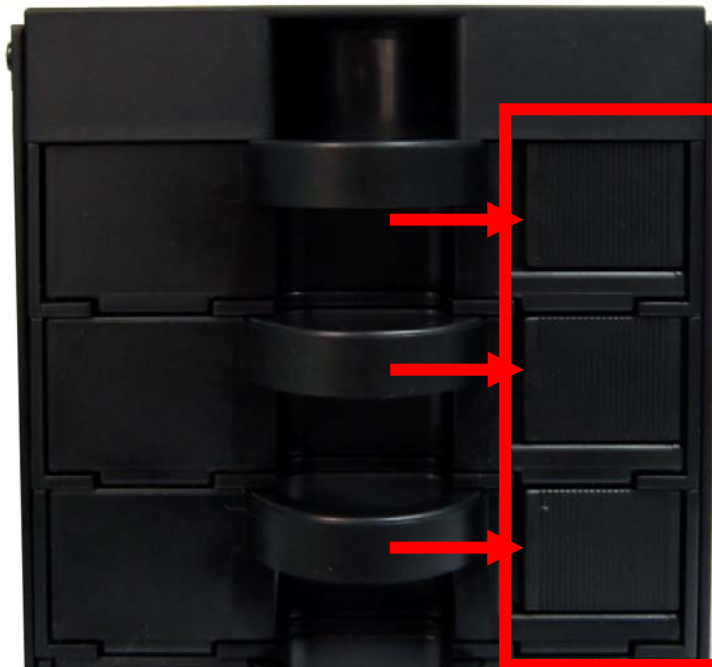
Step4: Install the HDD into the tray and insert one screw on each side. Make sure screws are firmly tightened, holding the tray and HDD together.



Step5: Slide HDD trays into the case.

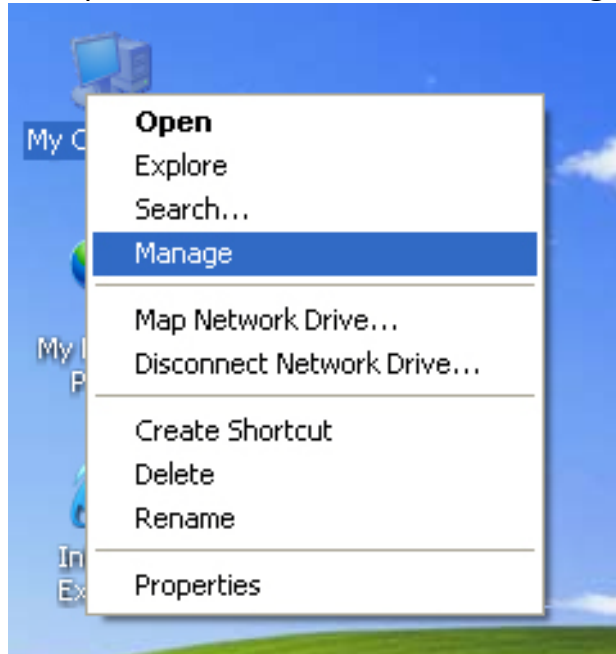


Step5: Push the switch to the right side to lock the HDD tray.

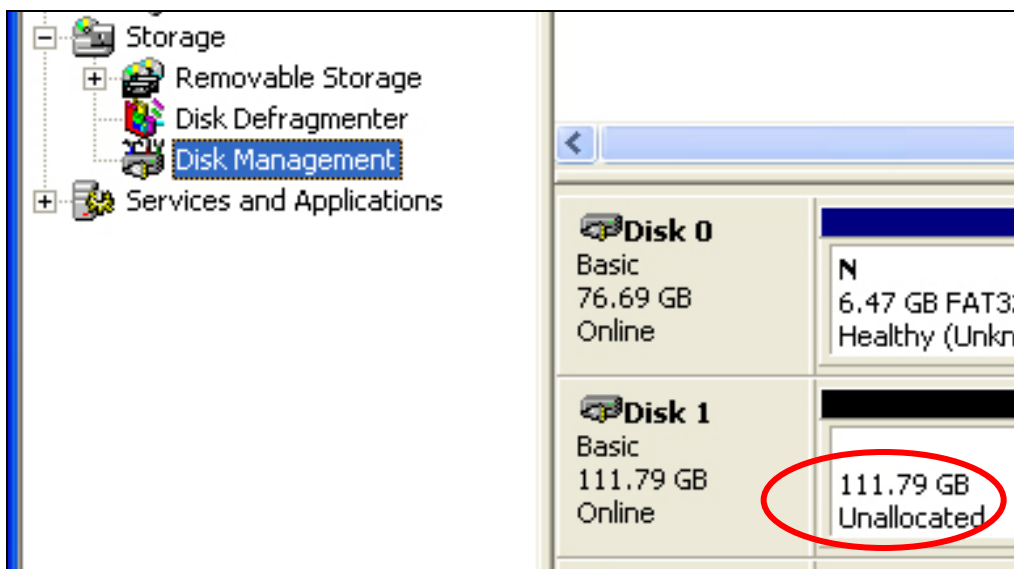


4. HDD Formatting Guide

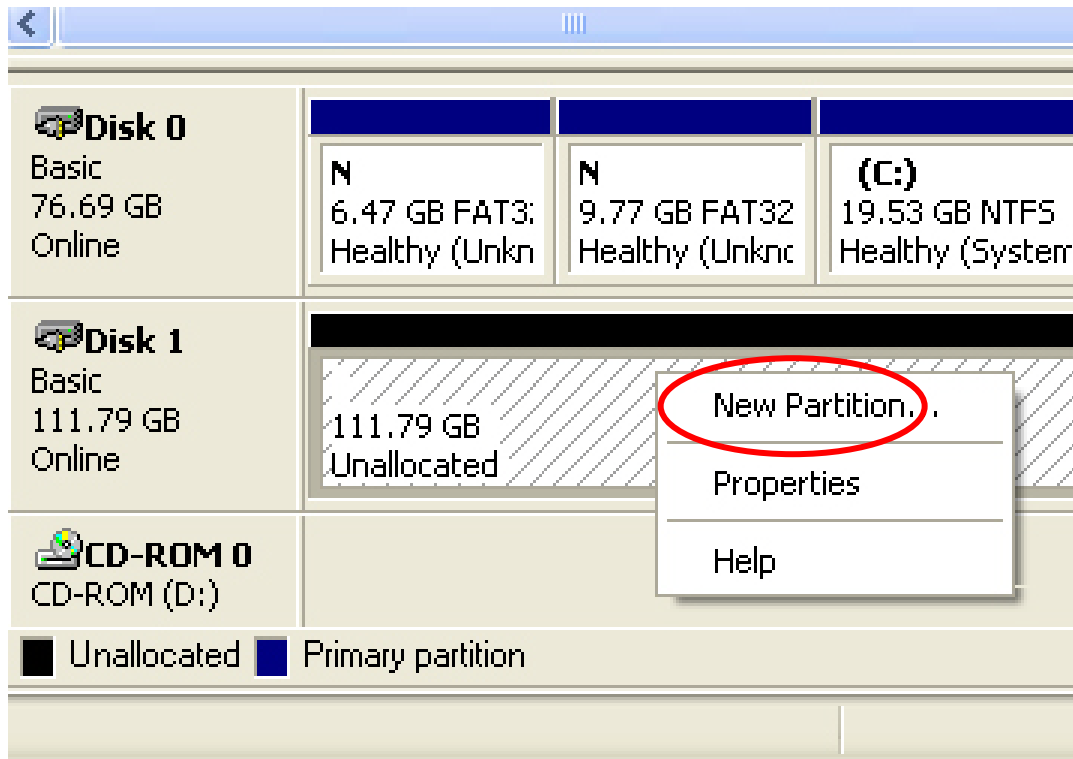
STEP1: Right-click on “My Computer” icon and select the “Manage” column.



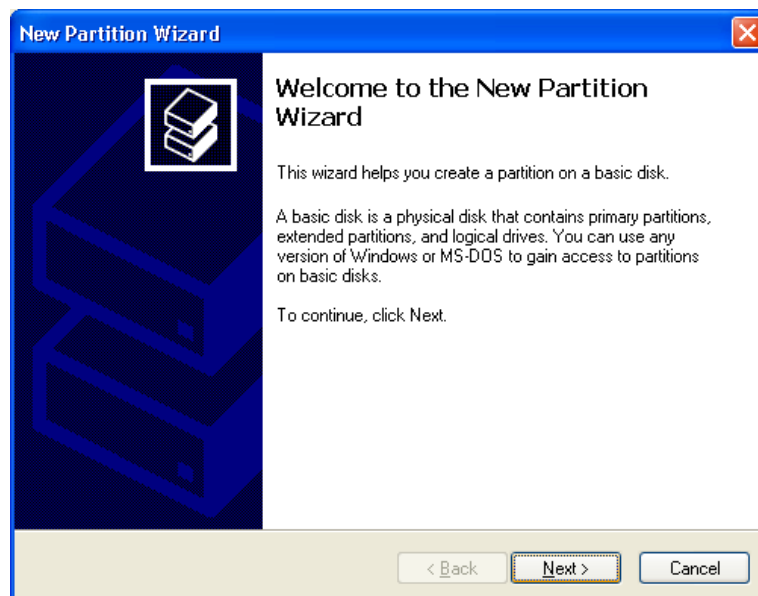
STEP2: Select “Disk Management” and you will see your External HDD showed “Unallocated”.



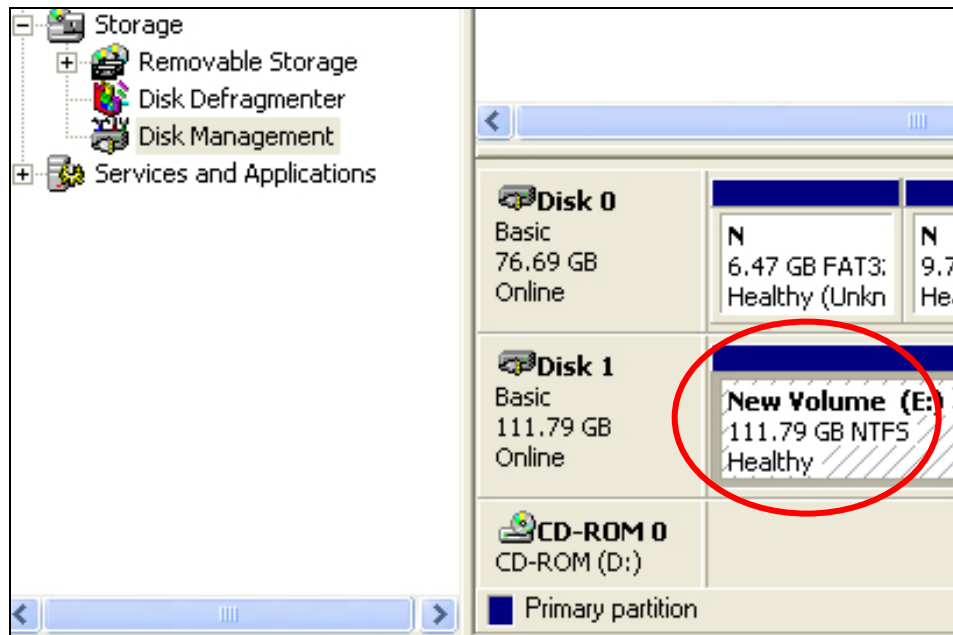
STEP3: Right-click on the “Unallocated” block and select “New Partition”.



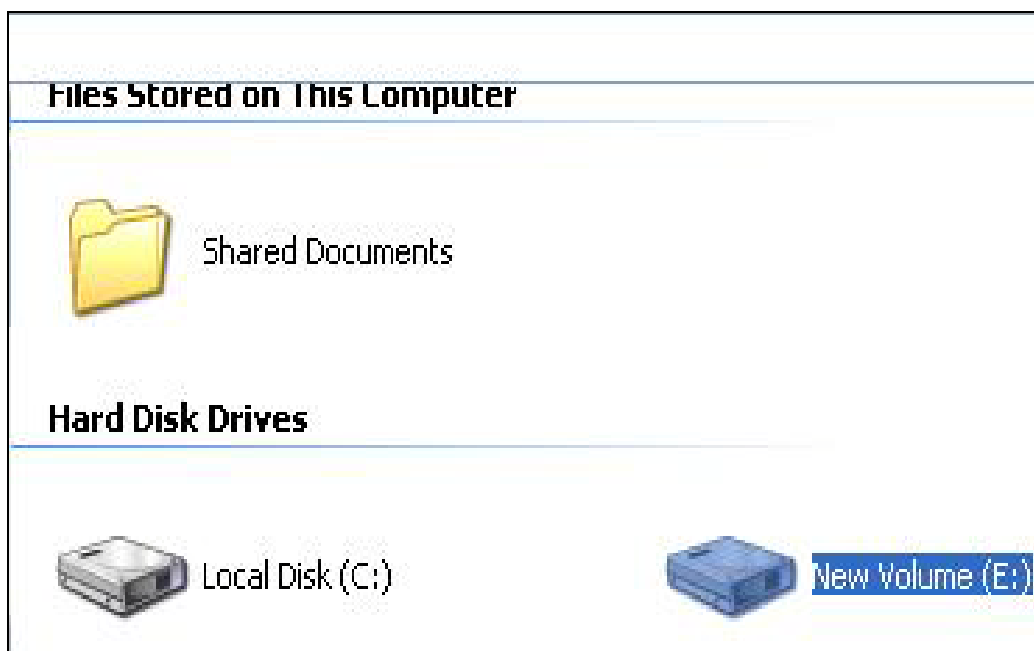
STEP4: The “New Partition Wizard” will appear. Please follow the instruction of the wizard to complete.



STEP5: When partitioning is completed, the external HDD will be recognized as a “New Volume”.

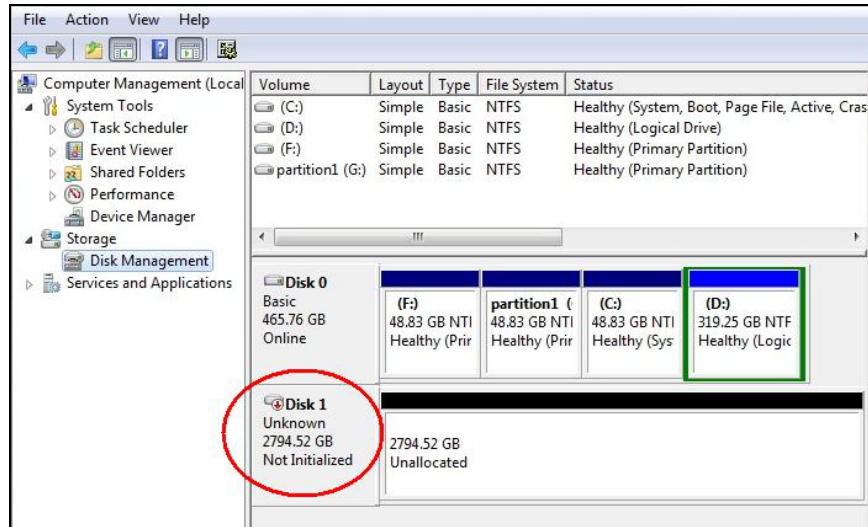


STEP6: Double-click “My Computer”. You will see the new volume appears on your PC.

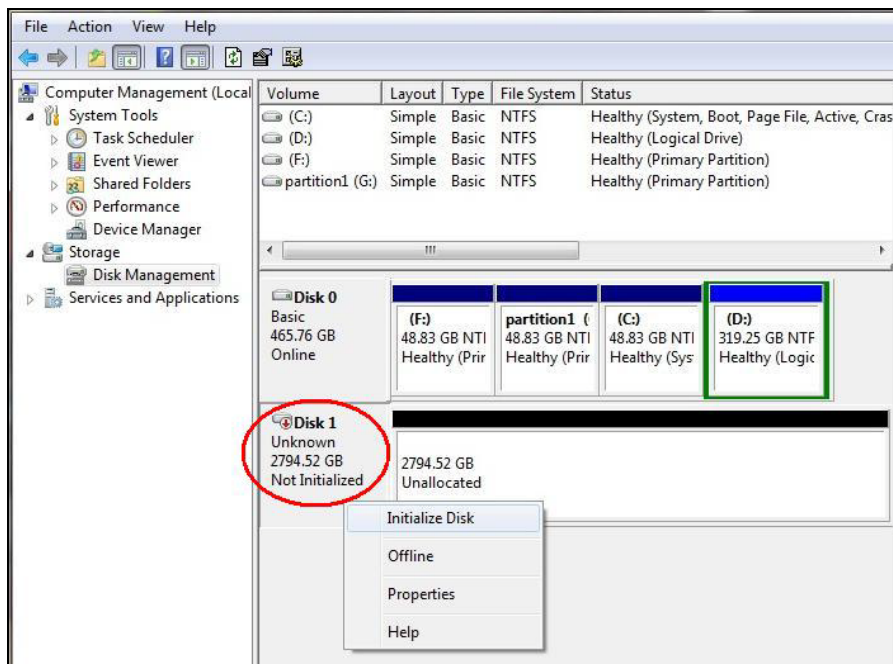


Initialize a Disk

If the HDD is new you have to initialize the device. View the box to the left of the “Unallocated” box. You most likely would see the “**Not Initialized**” message displayed. The Hard Disk Drive must be set to “**Online**” before partitioning and formatting the Hard Disk Drive.



1. Right-click the “**Not Initialized**” area, a disk’s initialization menu will appear as below. Select “Initialize Disk” and follow the steps of the HDD Formatting Guide wizard to complete disk initialization.



Note: Windows Vista and 7 will ask what kind of disk type you want to make, “MBR” or “GPT”. Please Activate MBR if the total volume is less than 2TB. If the total volume is more than 2TB please activate GPT.

