



Fry Warmer/Dump Station



Models: 177FFDS1

1/2015

Please read and keep these instructions. Indoor use only.

Index

Introduction	3
Requirements and Safety Instructions	3
Operation	4
Cleaning	4
Parts Diagram.....	5
Limited Warranty	6

Introduction, Requirements and Safety

Introduction

1. Please read instructions before using this appliance.
2. When using electrical appliances, basic precautions should always be followed to reduce the risk of fire, electric shock and injury.
3. Clean machine thoroughly before and after each use following the cleaning instructions provided below.

Safety Instructions



WARNING!

All power must be disconnected at power source before any service procedure is performed.

1. This appliance is hot when in use. To avoid burns, do not let bare skin touch hot surfaces. Keep combustible materials, such as drapes and other furnishings, away from appliance.
2. Extreme caution is necessary when any appliance is used by or near children and whenever the appliance is left unattended.
3. Always unplug appliance when not in use and before cleaning, adjusting or maintaining this machine. To disconnect appliance, turn switch off and remove plug from power source.
4. Do not operate any appliance with a damaged cord or plug, after the appliance malfunctions, has been dropped or damaged. Return appliance to an authorized service facility for examination, electrical or mechanical adjustment or repair.
5. Do not use outdoors. This appliance is not intended for wet or moist locations. Never locate appliance where it may fall into water.
6. Connect to properly grounded outlets only. Avoid the use of extension cords. Do not run cord under carpeting, runners or the like. Arrange cord away from traffic area and where it will not create a tripping hazard.
7. This appliance is equipped with a power cord with a three blade plug. Plug ONLY into a matching three blade outlet. DO NOT cut or break off the third blade or attempt to use with a two blade extension cord.
8. To prevent a possible fire, it is recommended that the unit is placed on a non-combustible surface.
9. This appliance has electrical parts. Do not use it in areas where gasoline, paint, or flammable liquids are used or stored.

Overview

Preparation

1. Set the unit on a flat, dry surface near a grounded 120V outlet.
2. Using a phillips head screw driver, attached the 2 metal posts to the base. Line up the 4 holes on each post with the threaded holes in the base.
3. Once posts are secured to the base, place the strip heater on top of the posts. Line up the holes and insert 4 screws into each post.
4. Place the food pan in the base.

MODEL #	POWER SUPPLY		OVERALL DIMENSIONS	FOOD PAN	NET WEIGHT	PLUG
177FFDS1	120V	1000W	22.5"L x 13"W x 19.5"H	2"D	25 lbs.	NEMA 5-15P

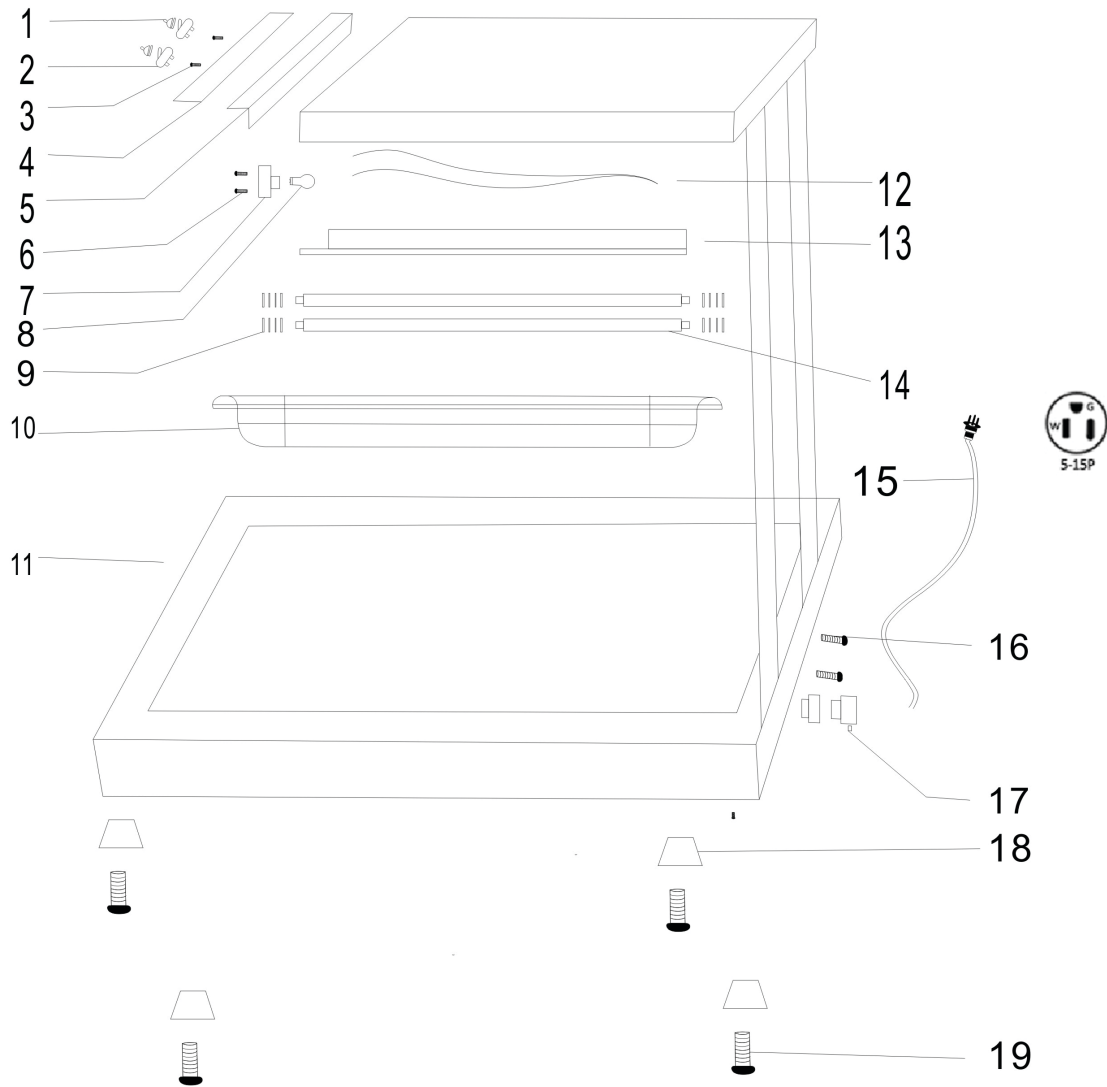
Operation

1. Plug cord into grounded electrical outlet of the correct voltage. Electrical shock can occur if appliance is not grounded.
2. Flip both the heat and light switches to the on position. Use of the light is optional and operates independently from the heating elements.
3. Place food products in the pan, located directly under the elements for best results.
4. Turn unit off when not in use.
5. To disconnect appliance, turn switches off and remove plug from power source.

Cleaning

1. Unplug the cord and let warmer cool before cleaning or moving.
2. This unit can be cleaned with a damp sponge and mild soap. Rinse with clean water and wipe dry.
3. Do not immerse in water or other liquid.

Parts Diagram



#	DESCRIPTION	QTY.
1	Waterproof switch cover	2
2	Switch	2
3	Switch screws	2
4	PVC panel	1
5	Front panel	1
6	Bulb socket screws	2
7	Bulb socket	1

#	DESCRIPTION	QTY.
8	Bulb	1
9	Element nut	4
10	Food Pan	1
11	Stainless steel base	1
12	Wiring harness	1
13	Reflex housing	1
14	Heating elements	2

#	DESCRIPTION	QTY.
15	Power cord	1
16	Base screw	8
17	Power relay	1
18	Feet	4
19	Foot screws	4

Limited Warranty

All equipment, which is sold under Avantco trademark and used for commercial purpose is warranted against defects in materials and workmanship. The warranty runs for 6 months from the date of original installation and is for the benefit of the original purchaser only. All other Warranties, Expressed or Implied, Statutory or Otherwise, including Without Limitation any implied Warranty of Merchantability or Fitness for Purposes are excluded. The Seller shall in no event be liable for direct, indirect or consequential damages in connection with Avantco commercial products.

This warranty is not effective if damage occurs because of accident, carelessness, improper installation, lack of proper setup, supervision when required or if the equipment is installed or operated in any manner contrary to the installation and operating instructions. Work performed by unauthorized personnel or unauthorized service agencies voids this Warranty.

This warranty does not apply to, and Avantco is not responsible for, any warranty claims made on products sold or used outside of the United States.