

User's Manual **m7** QC-235 AIR CORNER CUT-OFF TOOL

Read this manual carefully before installing, operating, servicing or repairing.

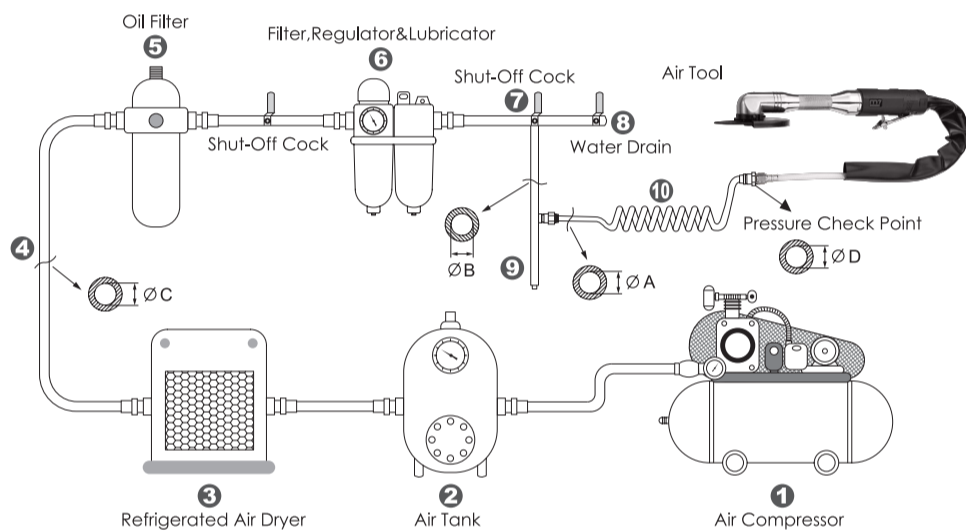
Working environment:

- Using these tools in any potentially explosive environment is strictly prohibited.
- It is always recommended that these types of tools must be operated when standing on a solid or firm location.
- Always use these tools in a well ventilated area.
- Slipping, stumbling and falling are the major causes of potential serious injury, therefore, a clean and clutter free surface in the working area before operating the tools is strongly recommended.

Air supply and connection requirements:

- The maximum recommended air pressure during operation must not exceed 90 psi (6.3bar). Higher air pressure may create unsafe operating conditions for the tool and the user.
- The compressed air should be cooled and have a water filter installed at the outlet end of the compressor. Even with a water filter installed, some water may still condense in the piping or hose and will enter the tool mechanism causing premature damage to the tool. Therefore, it is recommended to install an air filter-lubricator device somewhere between the tool and the compressor.
- Always use an air compressor of the proper capacity to operate each tool.
- Clean the hose with a blast of compressed air before connecting the hose to the air tool. This will prevent both moisture and dust inside the hose from entering the tool and causing possible rust or malfunction.

Ideal system connection:



Piping diameters and length requirement:

- ★The diameter ΦA required for the inlet pipe ⑩ is recommended on the specification table.
- ★The diameter ΦB required for the branch pipe (from ⑦ to ⑨) should be 2 times as large as ΦA . $\Phi B = 2 \times \Phi A$
- ★The diameter ΦC required for the primary air supply (from ① to ⑧) should be 3 times as large as ΦA . $\Phi C = 3 \times \Phi A$
- ★The length for the inlet pipe ⑩ should be less than 15 feet (4.5m).



- This tool should only be used as a hand operated tool. It is powered by compressed air and is not insulated against electric shock.
- This tool is specially designed for tightening or loosening bolts or nuts. Any application or use of this tool other than what it is designed for is strictly prohibited.
- Use only pneumatic impact sockets and accessories on this tool. Never use hand sockets or accessories.
- High sound levels may cause hearing damage. Always wear hearing protection when operating this tool.
- Wearing eye/face protection can reduce the danger of high-speed socket being ejected from the tool, due to improper socket insertion during operation.
- User must wear proper clothing. Loose clothing, long hair, stings, straps, belts and jewelry should not be worn when operating this tool.
- Before using these tools, make sure that all couplings and plugs are securely mounted. Air hoses which are under pressure will cause a whipping action when disconnecting, this can lead to serious injury!
- Make certain to stand on a solid or firm location and keep body in well-balanced position while operating this tool.
- Test run the tool to confirm the rotation direction before practical use. This will reduce the potential hazard due to unexpected rotating direction.
- In case of tool insert failure, always keep hands away from rotating socket to reduce the risk of being injured, especially when working in confined spaces.
- Always turn off the air supply and disconnect the air hose before changing socket or making adjustments on the tool.
- Release the throttle trigger to avoid danger if there is a failure of energy supply and when connecting or disconnecting the air hose.
- prolonged use will cause user fatigue. Periodic breaks are recommended for user safety.
- It is recommended to stop operating the tool whenever the user experiences discomfort, tingling or pain during use.
- Beware if the compressed air hose breaks unexpectedly, or is being connected or disconnected improperly. This whipping action may cause injury.
- Always use caution when operating this tool to prevent injury.
- Avoid storing this tool where it is subject to high humidity.

Item No.	Collet Size / Pad	Free Speed	Avg. Air Consumption	Air Pressure	Overall Length	Motor	Net Weight	Air Hose	Sound Pressure	Vibration level
	mm	R.P.M	CFM	PSI	inch	HP	LBS	inch	dB(A)	m/s
QC-235	5" x Ø10	16000	10.0	90	14"	0.9	3.5	3/8"	85.0	5.0

Uncertainty K=0.5a if a ≤ 5 m/s² or K=0.4a if a > 5 m/s²

EC DECLARATION OF CONFORMITY

Original Language
Serial Number: Please refer to the tool
Air Corner Cut-Off Tool
Item No.: QC-235
6.3 bar (90. psi)



We declare under our own responsibility that the above machinery fulfils all the relevant provisions of (MD) Machinery Directive 2006/42/EC and its amendment and is manufactured and tested according to the following standards:
EN ISO 11148-9 / EN ISO 15744 / EN ISO 28927-12

Declared in: Taichung, Taiwan
Dated: 2013/06/01

Signature

Jonney Chen
Jonney Chen
Declared by: QA Manager

Manufacturer:

Mighty Seven International Co., Ltd.
No. 70-25, Ching Quang Rd., Wujih Dist.,
Taichung City, 41466 Taiwan
http://www.mighty-seven.com

Authorized contact to compile the technical file:

King Tony France
3 Rue des Imprimeurs ZI République Nord 1.
86000 POITIERS FRANCE
TEL: (+33)5-49-30-30-90
E-MAIL: christian.aubineau@kingtony.eu

Warranty Policy

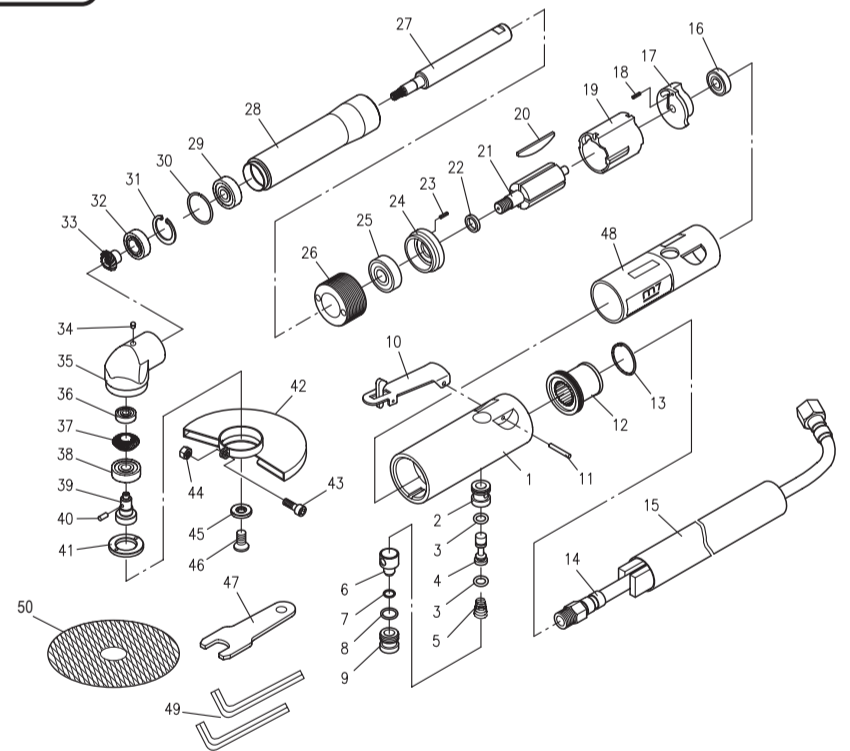
Mighty-Seven International Co., LTD, (M7), part of the global King Tony Tool Group, offers a 12 months limited warranty on all products sold in the US and Canada through King Tony America. The limited warranty applies to defects in material or workmanship within the first 12 months of ownership; it does not apply to products that have been abused, misused, modified, disassembled or repaired by someone other than an M7 authorized repair center.

King Tony America reserves the right to conduct an inspection of any tool returned for warranty consideration and will offer the owner of the tool a written evaluation if warranty is denied for any reason. Specific exclusions to this warranty include certain consumable (wear) items in every tool. All consumable items are clearly noted in the parts list for each tool contained in this catalog. Other specific exclusions include failure to properly oil the tool prior to use and using excessive air pressure to operate the tool. All implied warranties, including but not limited to the implied warranties of merchantability or fitness for a particular purpose are also specifically excluded.

In no event shall King Tony America be liable for consequential, incidental, or specific damages resulting from or in any manner related to the product, its design, use or any inability use the same. The sole and exclusive remedy with respect to a defective product shall be the repair, or replacement of the tool.

For assistance with a warranty claim or for the name of the M7 authorized warranty repair center nearest you please email: sales@kingtonyamerica.com; or call King Tony America at (877)708-6657 between the hours of 8AM and 5PM, Pacific Time.

m7 5" Air Corner Cut-Off Tool Item No : QC-235



Part List QC-235

NO.	INDEX NO.	DESCRIPTION	Q'TY	NO.	INDEX NO.	DESCRIPTION	Q'TY
1	QC-234P01	Housing	1	26	QC-234P26	Retainer	1
2	QC-234T02	Throttle Valve Bushing (2.3)	1 set	27	QC-234P27	Extend Shaft	1
3	---	O-Ring (2PCS)	1 set	28	QC-234P28	Extend Bushing	1
4	QC-234P04	Valve Stem	1	29	QC-234P29	Ball Bearing	1
5	QC-234P05	Spring	1	30	QC-234P30	Ring	1
6	QC-234T06	Air Regulator (6.7)	1 set	31	QC-234P31	Retaining Ring	1
7	---	O-Ring	1	32	QC-234P32	Ball Bearing	1
8	---	O-Ring	1	33	QC-234P33	Pinion	1
9	QC-234T09	Throttle valve Plug (8.9)	1 set	34	QC-234P34	Grease Cup	1
10	QC-234P10	Throttle Lever	1	35	QC-234P35	Angle Housing	1
11	QC-234P11	Throttle Lever Pin	1	36	QC-234P36	Ball Bearing	1
12	QC-234P12	Exhaust Deflector	1	37	QC-234P37	Gear	1
13	QC-234P13	Ring	1	38	QC-234P38	Ball Bearing	1
14	QC-234T14	Air Inlet Hose (14.15)	1 set	39	QC-234P39	Spindle	1
15	---	Exhaust Hose	1	40	QC-234P40	Pin	1
16	QC-234P16	Ball Bearing	1	41	QC-234P41	Clamp Nut	1
17	QC-234T17	End Plate (17.18)	1 set	42	QC-235T42	Protector (42.43.44)	1 set
18	---	Roll Pin	1	43	---	Screw	1
19	QC-234P19	Cylinder	1	44	---	Nut	1
20	QC-234T20	Rotor Blade (4PCS)	1 set	45	QC-234P45	Washer	1
21	QC-234P21	Rotor	1	46	QC-234P46	Screw	1
22	QC-234P22	Bearing Space	1	47	QC-234P47	Spanner	1
23	---	Roll Pin	1	48	QC-234P48	Cover	1
24	QC-234T24	Front Plate (23.24)	1 set	49	QC-234P49	3mm/4mm Alan Key	1
25	QC-234P25	Ball Bearing	1	50	QC-235P50	cutting wheel 5" x Ø10	1