

**WARRANTY:** THE MANUFACTURER WARRANTS THIS PRODUCT TO BE FREE FROM ANY CONSTRUCTION DEFECTS FOR ONE YEAR FROM THE DATE OF PURCHASE. DURING THAT PERIOD ANY MALFUNCTIONING UNITS WILL BE REPAIRED, SERVICED AND CALIBRATED WITHOUT CUSTOMER COVERING THE APPROPRIATE TRANSIT FEES - WARRANTY DOES NOT COVER ANY PROBLEMS RESULTING FROM THE INCORRECT INSTALLATION OR POWER SUPPLIED, ABUSIVE TREATMENT OR ANY OTHER OBVIOUS USER-INFLICTED FAULT - WE ARE STILL HAPPY TO HELP AFTER THE WARRANTY PERIOD, HOWEVER WE RESERVE THE RIGHT TO CHARGE FOR LABOR, REPLACEMENT PARTS AND TRANSIT WHERE APPLICABLE - IN CASE OF ANY PROBLEM PLEASE CONTACT US IMMEDIATELY: [INFO@XAOCDEVICES.COM](mailto:INFO@XAOCDEVICES.COM).

**EUROPEAN UNION:** SCHNEIDERS LADEN, ESCAPE FROM NOISE, POST MODULAR, LONDON MODULAR, FUNKY JUNK, MODULAR SQUARE, NOISE KITCHEN, KNOB SHOP, ANALOGUE ZONE, HIEBER LINDBERG, MODE.M MODULAR, ERROR INSTRUMENTS. **UNITED STATES:** ANALOGUE HAVEN, MUFF WIGGLER STORE, CONTROL MODULAR, 10 MUSIC TECHNOLOGY, PERFECT CIRCUIT AUDIO. **AUSTRALIA:** EQUINOXOZ MUSIC SOLUTIONS, RHYTHM ACTIVE. **ASIA:** CLOCK FACE MODULAR - ASIA MODULAR.

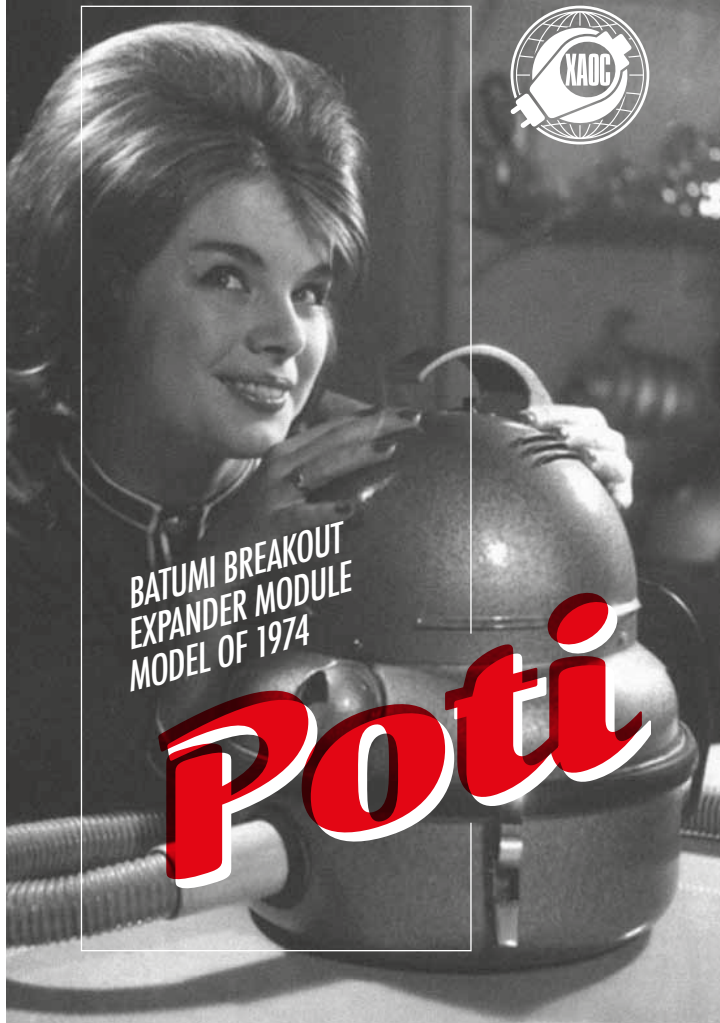


[XAOCDEVICES.COM](http://XAOCDEVICES.COM)



BATUMI BREAKOUT  
EXPANDER MODULE  
MODEL OF 1974

Poti



## SALUT

*Poti is a simple but very useful breakout expander for the Batumi quadruple LFO module by Xaoc Devices.*

*Its panel provides an immediate access to the Batumi functions originally selected by the cluster of jumpers on the back of the module:*

- **RESET/SYNC** mode option
- selection of the assignable waveform (**ASGN**)

## INSTALLATION

1. Please find the cluster of jumper pins **1** on the back of Batumi. Remove all the jumpers.
2. Plug the Poti ribbon connector **2** to the jumper pins in such a way that the red stripe points down.

*Connecting the cable in a wrong way will not cause any damage, but of course the switches will not be operating as intended. Do not plug the power connector instead of the Poti cable!*

## OPERATION

The upper switch **3** selects between the reset and tap-tempo function of the **RESET/SYNC** inputs on the panel.

The combination of the two switches **4** below selects the waveform delivered to the **SAW/ASGN** outputs, according to the markings printed on the Poti panel.

*For more information on the **RESET/SYNC** and **SAW/ASGN** modes, please refer to the Batumi manual.*

