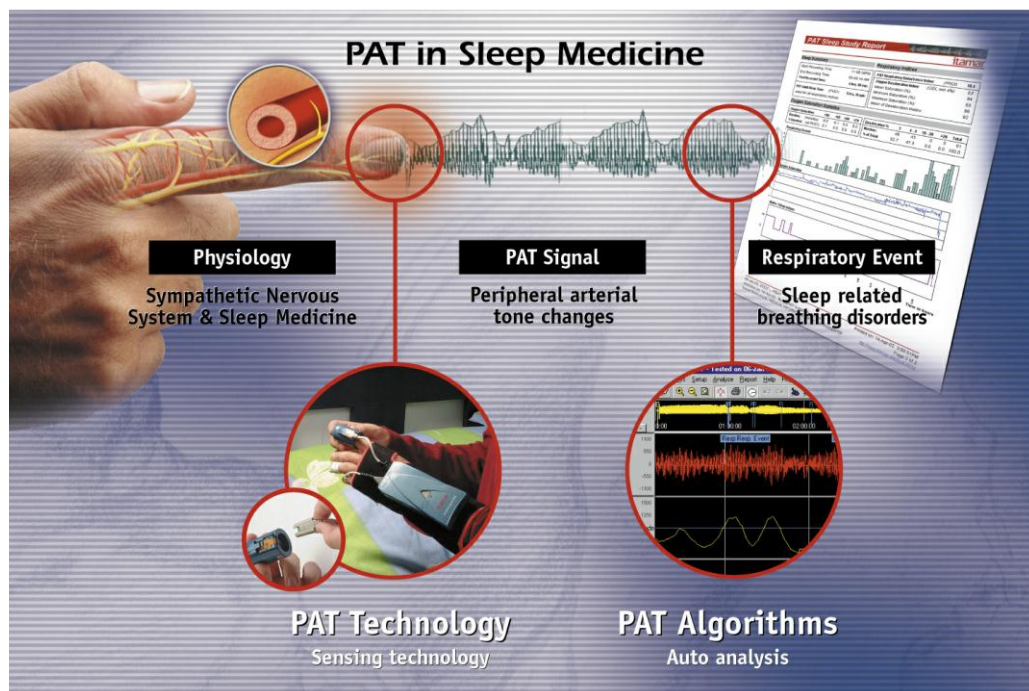


zzzPAT Installation Guide for version 4.3.62




Itamar Medical P/N - OM2198205 Rev. 3

Table of Contents

1. General Overview	3
2. zzzPAT structure	3
3. System Requirements	4
3.1 Hardware configuration	4
3.2 Operating System.....	4
4. Step by step installation instructions.....	4
4.1 Installations types	7
4.1.1 Standard - Standalone installation only.....	7
4.1.2 Advanced - Server installation only	9
4.1.3 Advanced - Client installation only.....	11
5. Login to zzzPAT	15
6. Testing Installation	15
7. Upgrading from previous versions	16
8. Uninstalling.....	16
9. Troubleshooting	17

1. General Overview

The installation process will install a single Icon  on the desktop, which opens the zzzPAT analysis and reporting software.

Prior to installation, verify that you are in full system administrator mode with full privileges.

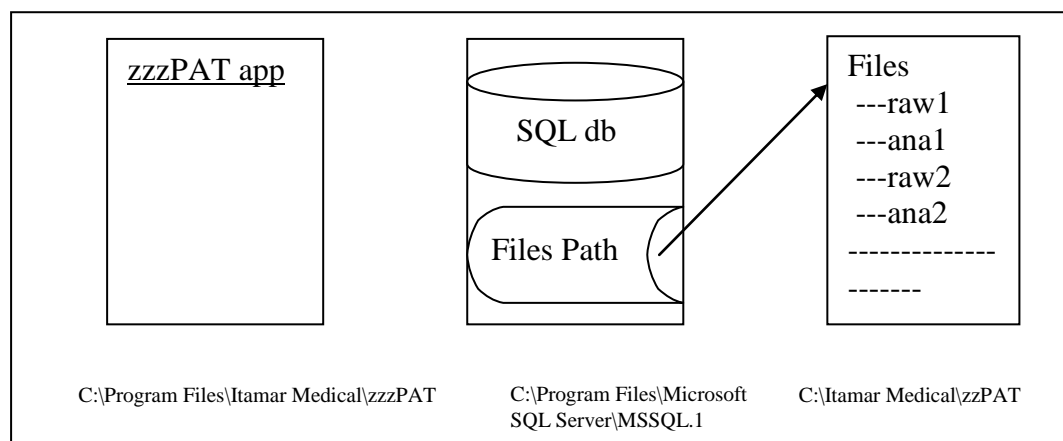
The zzzPAT software can be installed as a standalone or as a client/server configuration.

- "Standalone" - intended for users that do not require sharing the database with other zzzPAT stations.
- "Client/Server" intended for network installations with multiple zzzPAT stations accessing a central zzzPAT database over the network. If you wish to install this mode it is strongly advised to coordinate the installation with an Itamar Medical representative. Extra training is crucial for proper operation.
 - The "Server" mode is selected **only once prior** to installing the "Clients". This installation should be done on the dedicated computer which will serve as the server for the zzzPAT clients.
 - The "Client" mode is selected **only after** installing the "Server" and is **repeated for all clients**.

2. zzzPAT structure

The zzzPAT application uses an SQL Express instance for its internal database. In addition, it uses a folder (files directory) to keep the raw data files for each night test (15MB per study). During the installation process you will be asked to specify this database folder as well as the application files folder.

The following diagram indicates the modules and the default paths used. The files folder can be located on a remote drive. It is recommended that this drive is backed up regularly.



3. System Requirements

3.1 Hardware configuration

Pentium 4 3GHz CPU or higher

CD-ROM drive

1 available USB port / Additional serial port is recommended

XGA screen resolution (minimum 1024 x 768 pixels)

Colors set to 16 bits or higher

RAM 1GB or higher

Free disk space: 10GB minimum / 60GB recommended disk space on database drive and at least 1.2GB on boot drive

3.2 Operating System

Windows XP with Service Pack 3 and above

Windows Vista Home Premium

Windows Vista Enterprise

Windows Server 2003

Windows Server 2008

Windows 7

Windows 8

4. Step by step installation instructions

- Insert the zzzPAT installation CD into the computer's CD-ROM drive.
- If the CD-ROM drive is set to run automatically, the installation will begin automatically. If installation does not begin, refer to the section below.
- Follow the instructions on the screen.

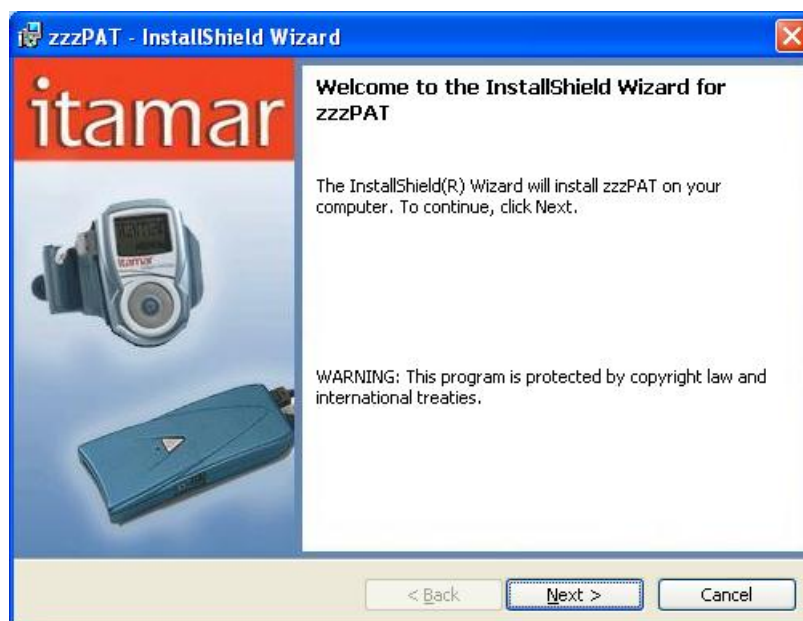
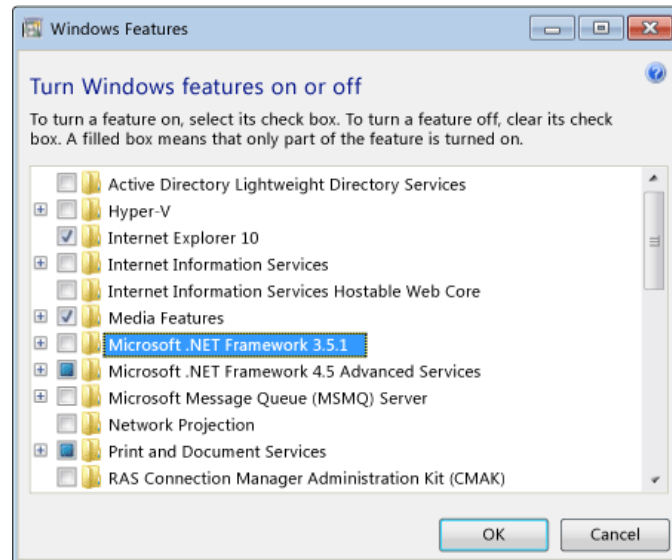
If the installation does not start automatically:

- Double-click the My Computer icon on your desktop.
- Double-click the CD-ROM icon labeled zzzPAT.
- Double-click 'Setup.exe' .
- Follow the instructions on the screen.

Note – for Win 8 only

Win 8 - Enabling the .NET Framework 3.5 in Control Panel

If you get a message “Enable .Net Framework 3.5 via Windows Features dialog” you will have to enable the .NET Framework 3.5 yourself through the Control Panel. In Control Panel, choose Programs and Features, choose Turn Windows features on or off, and then select the Microsoft .NET Framework 3.5.1 check box. This option requires an Internet connection.



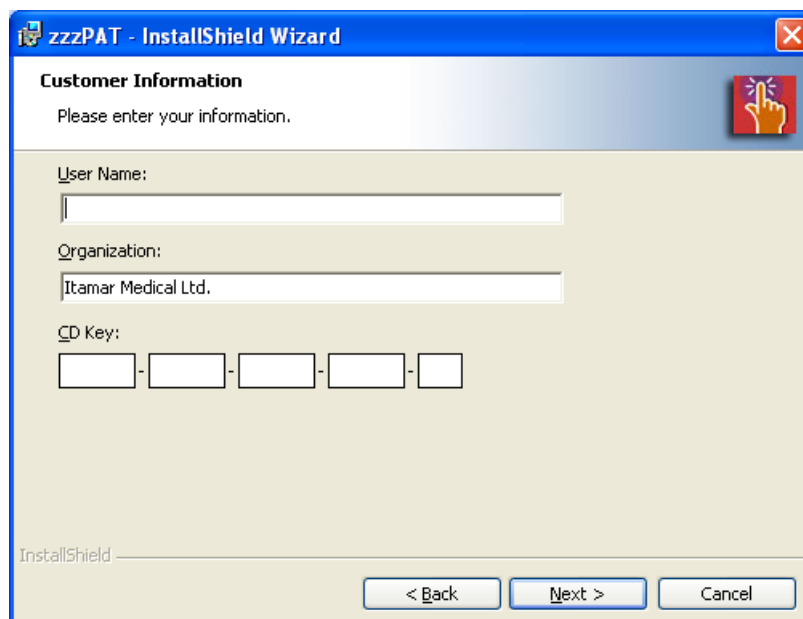
Click **Next**. The following dialog appears. Please make sure that no other applications (including antivirus software) are currently running.



Click **Next**. The License Agreement dialog appears.

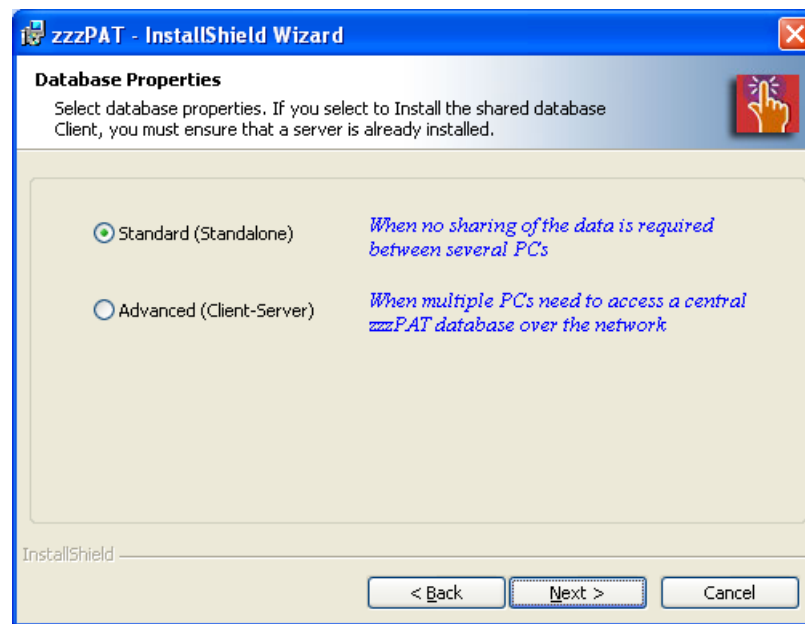


After reading the agreement, select **I accept the terms in the license agreement** and click **Next** to continue. The 'Customer Information' dialog box appears.



Enter user name, company name and the serial number exactly as it appears on the cover of the zzzPAT installation disk.

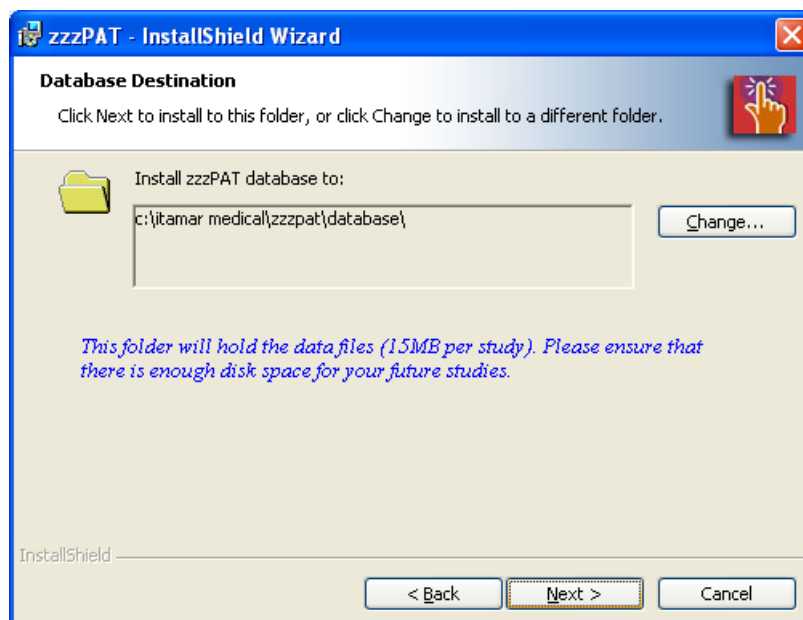
Click **Next** to continue. The 'Database Properties' dialog appears.



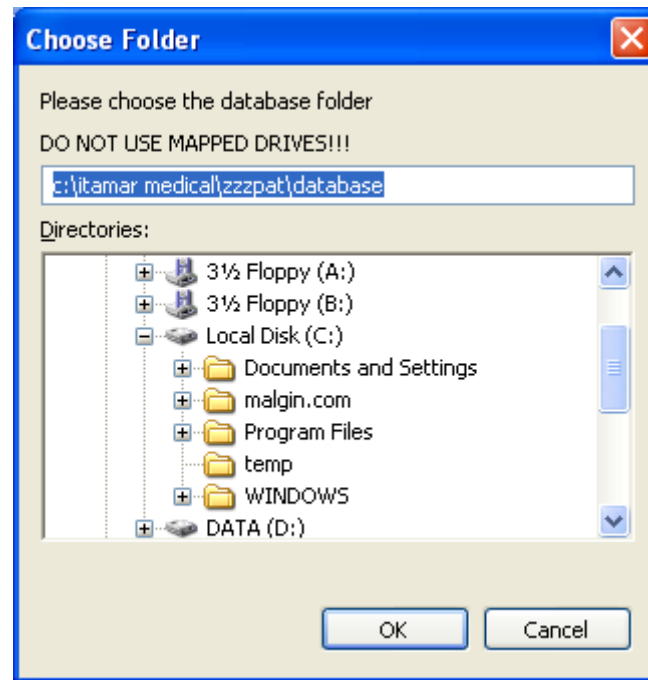
4.1 Installations types

4.1.1 Standard - Standalone installation only

The zzzPAT Installer will assist in selecting a destination location for the zzzPAT database. If the necessary folder does not exist, zzzPAT Installer will create the folder.



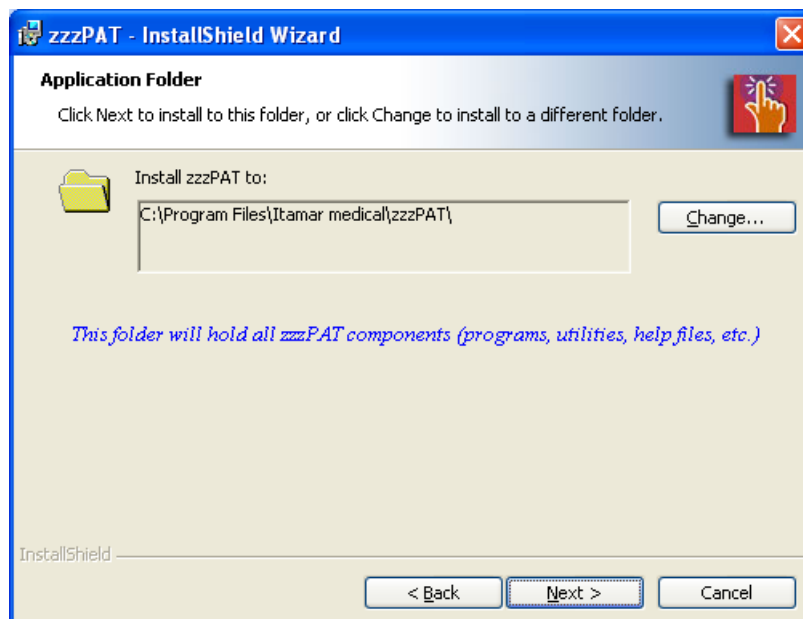
If you wish to change the default folder, select the Change button. The 'Choose Folder' dialog appears.



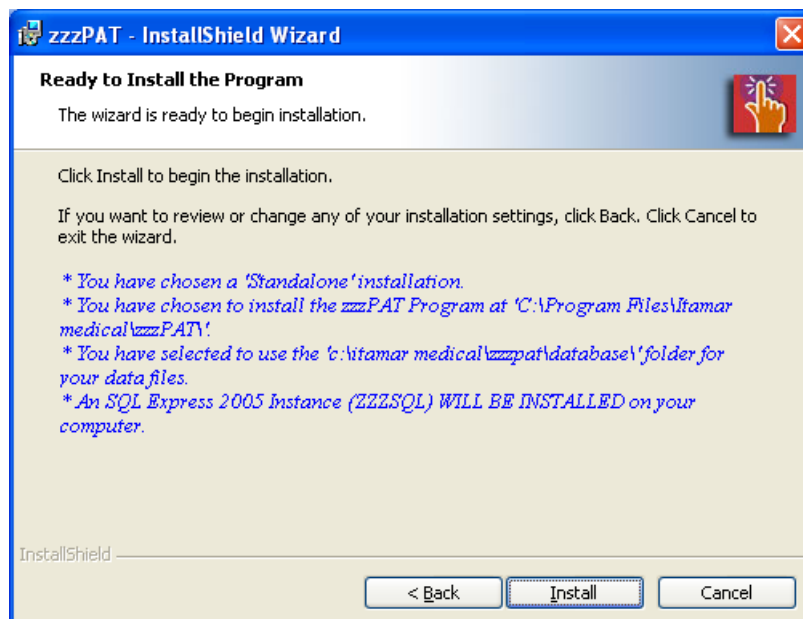
Make sure you are not selecting a mapped drive.

Select **OK** to Proceed.


The zzzPAT Installer will assist in selecting a destination location for the zzzPAT application files. If you wish to change the default folder, select the Change button.



The last dialog before standalone installations summarizes your selections. After reading this summary, press **Install** to begin installation.



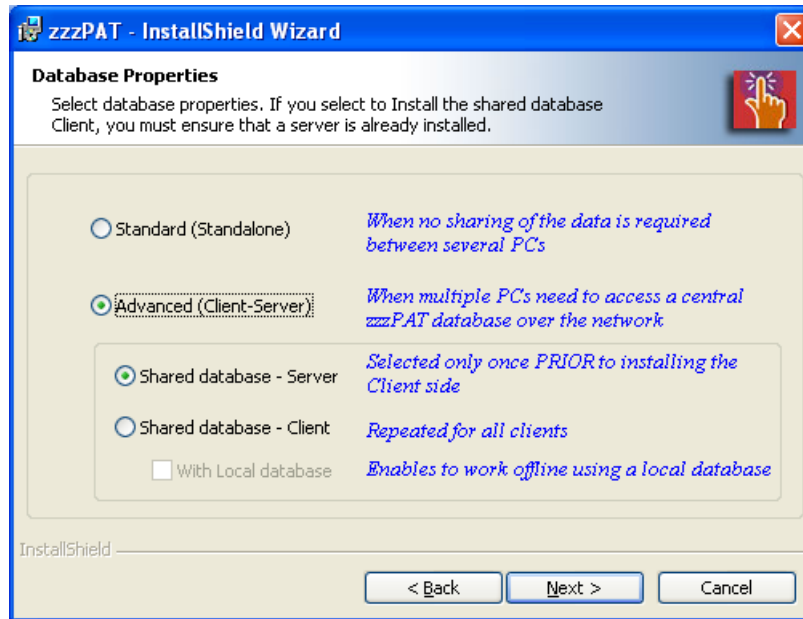
At the end of the installation you should restart your computer.

	<p style="text-align: center;">Note – for Win 8 only</p> <p>Win 8 – Installing Microsoft SQL Server 2005 Express (installs automatically during zzzPAT installation)</p> <p>During the installation you may get the following dialog.</p> <div data-bbox="654 1164 1300 1668"></div> <p>Select the option “Don’t show this message again” and then select “Run the program without getting help”.</p>
---	---

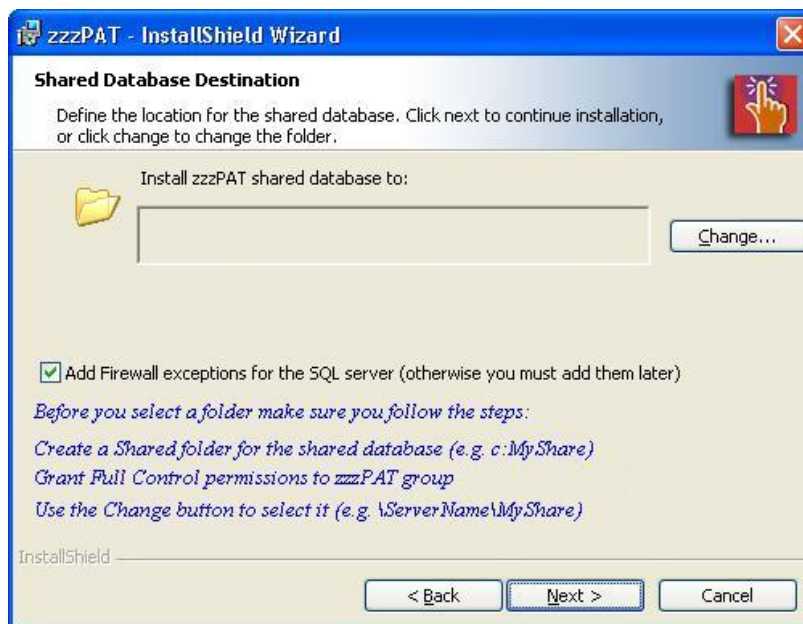
4.1.2 Advanced - Server installation only

The following selection will result in Server installation

The Server side installation creates a shared MS-SQL database that is used by multiple zzzPAT stations. Accordingly, the shared database needs to be created **only once per site installation**.



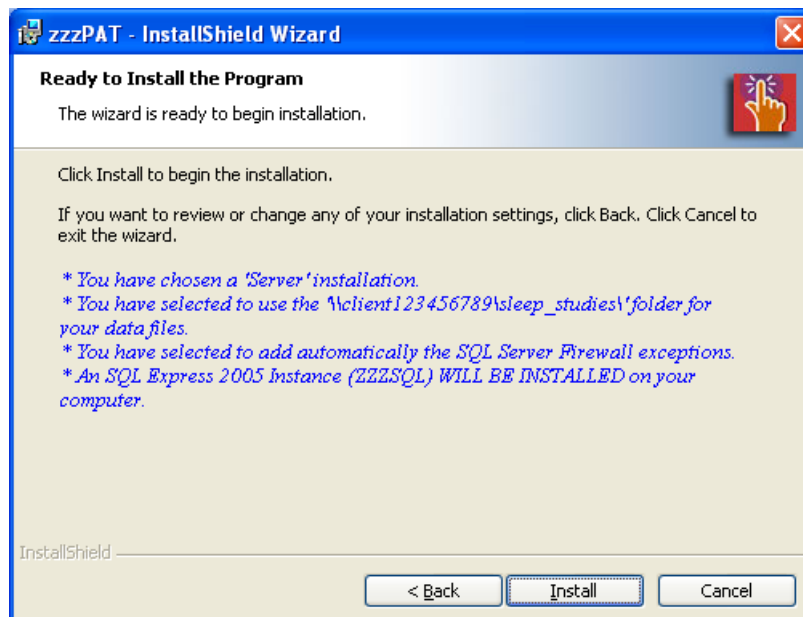
The zzzPAT Installer will assist in selecting a destination location for the zzzPAT database.



Press the Change button to enter a UNC path for the database files folder. This folder will be accessed by all zzzPAT users so it needs to be shared on the network with full control permissions for the "Everyone" group.

If you do not want to use the "Everyone" group, please define a group of "zzzPAT" users and grant this group Full Access to this shared folder. In that case you will have to grant the **same permissions** to the following services:
SQL Server (ZZZSQL)
SQL Server VSS WRITER

The last dialog prior to beginning server installation summarizes your selections. After reading this summary, press **Install** to begin installation.

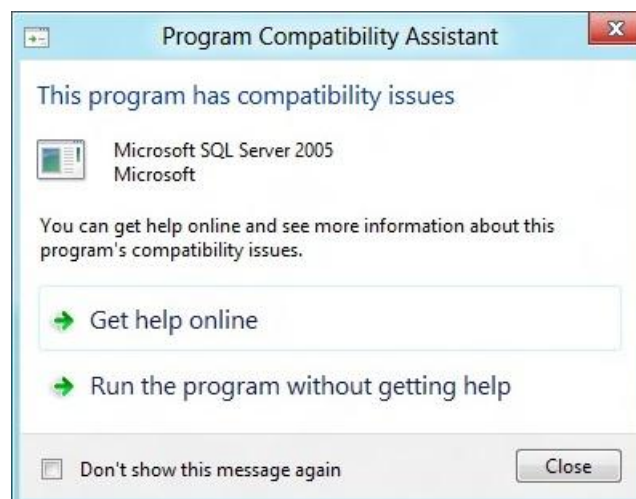


Note – for Win 8 only

Win 8 – Installing Microsoft SQL Server 2005 Express (installs automatically during zzzPAT installation)

During the installation you may get the following dialog .

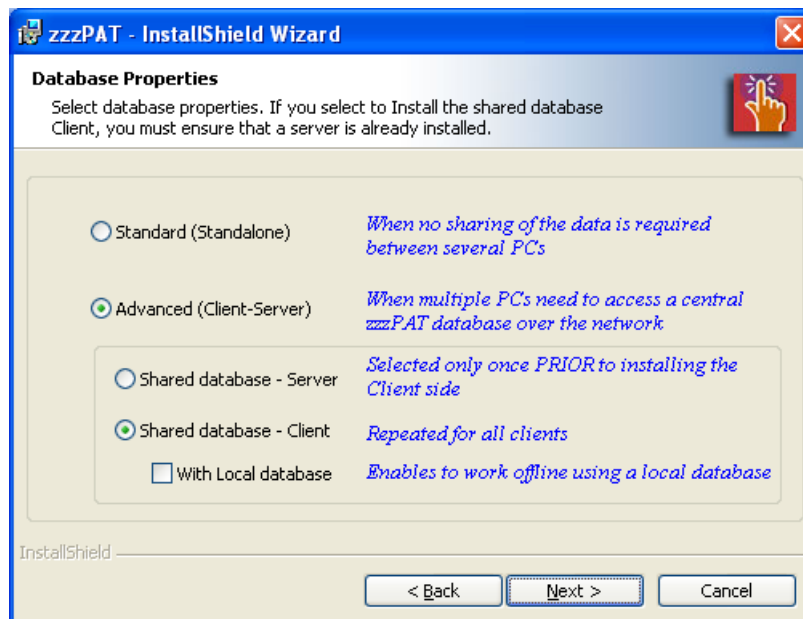
Press option “Don’t show this message again” and select “Run the program without getting help”.



4.1.3 Advanced - Client installation only

The following selection will result in Client installation

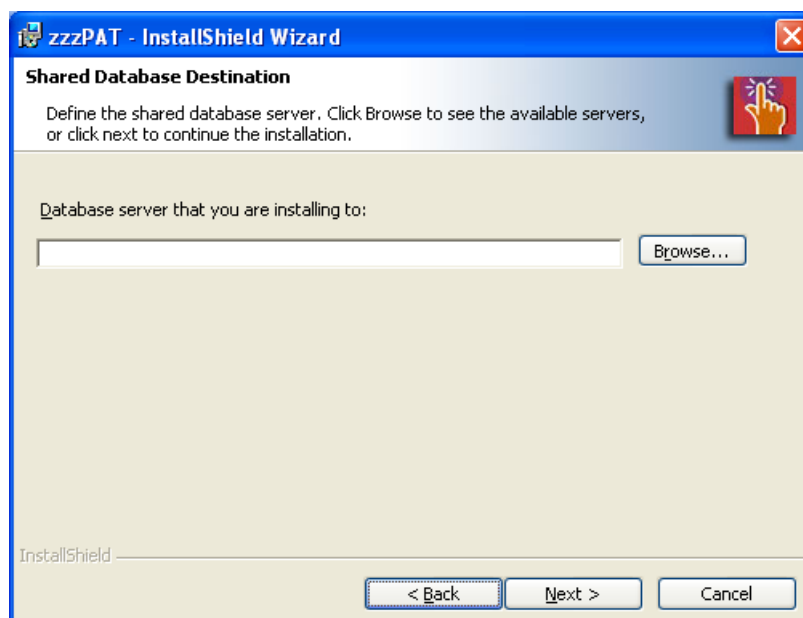
Prior to performing a Client side installation, a Shared Database installation must be previously performed on a dedicated computer.



The Client installation may also have a local database and during zzzPAT login the user can select connecting to the Shared or Local database. For this option you should check the “With Local database” check box.

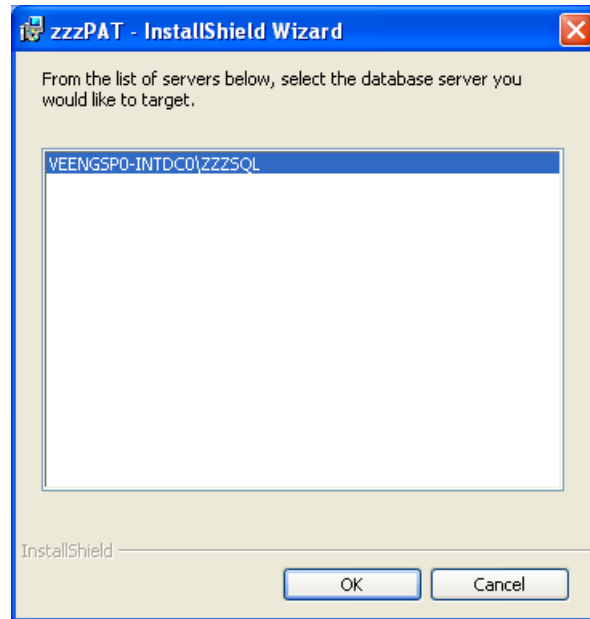
It is not recommended to install the local database option unless offline work is anticipated with the particular computer.

Press **Next** to define the Shared Database.

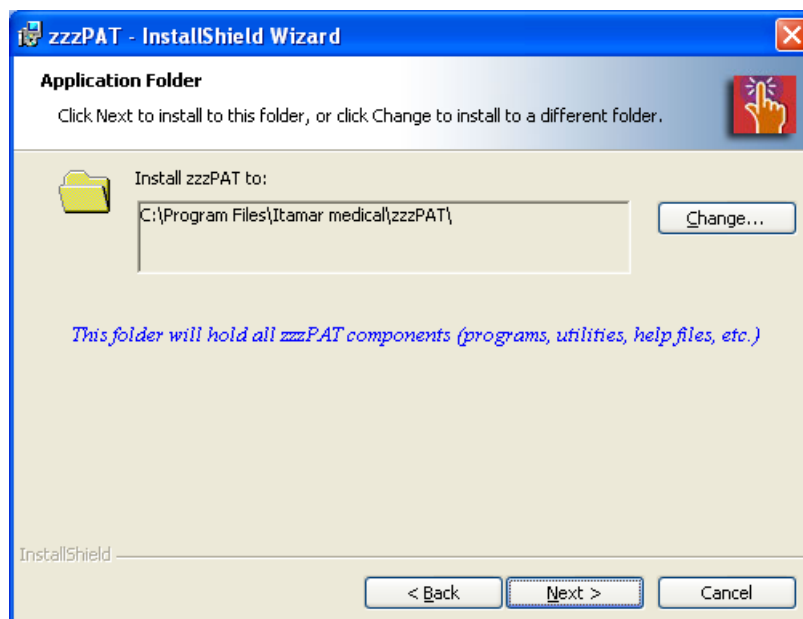


You can also enter the <name of the computer with the SQL server>\ZZZSQL , i.e. SQL_PC\ZZZSQL

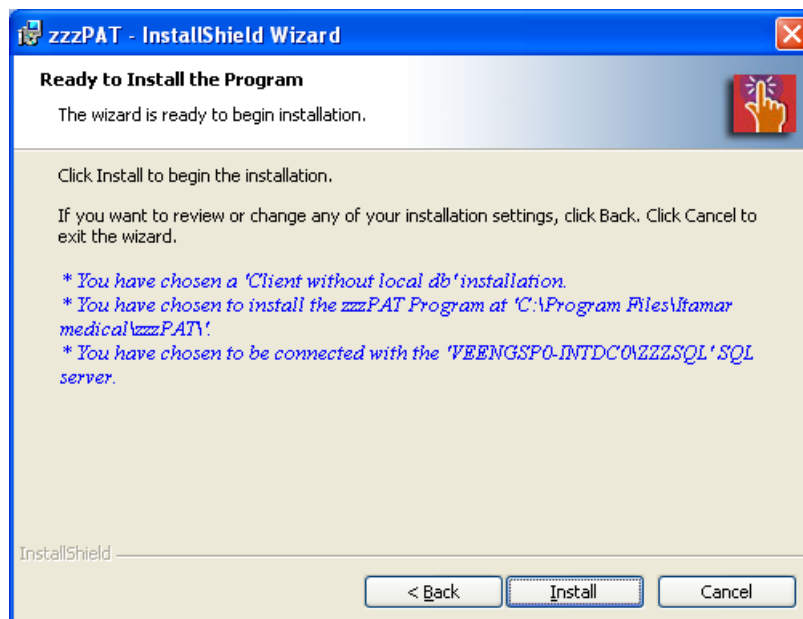
The zzzPAT installer will identify and display the currently defined database servers. Click Browse to see the ZZZSQL servers. The shared MS-SQL database can be selected from the list.




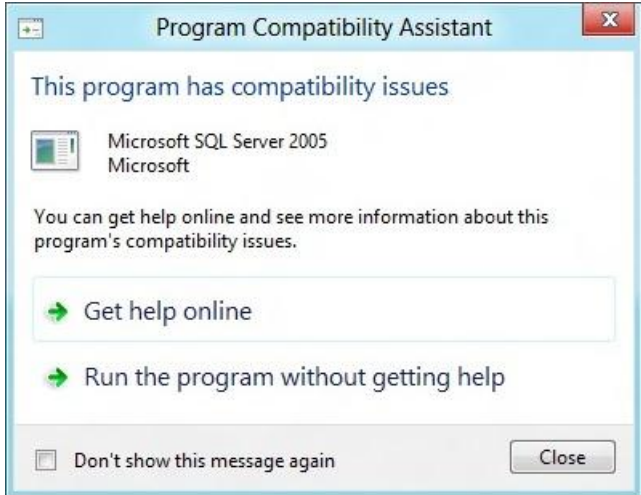
The zzzPAT Installer will assist in selecting a destination location for the zzzPAT application files. If you wish to change the default folder, select the Change button.



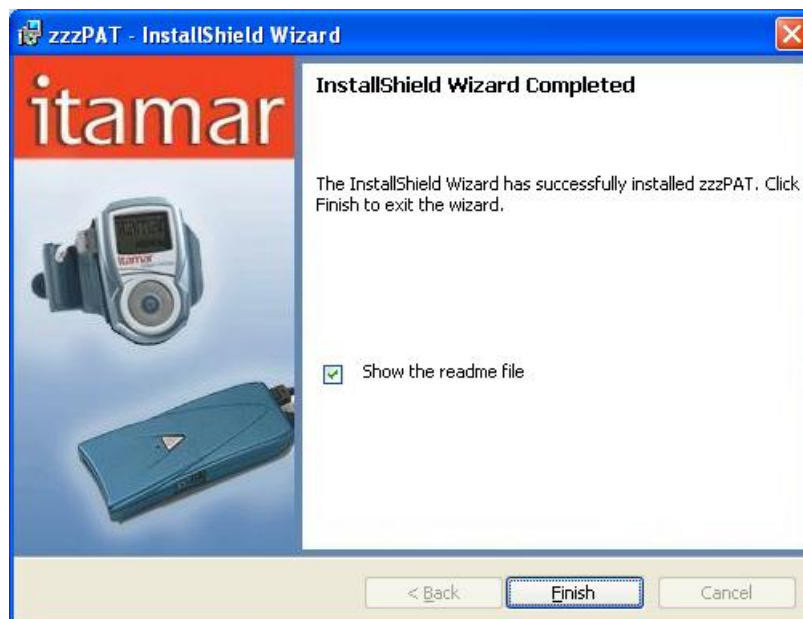
Press **Next** to proceed.



The last dialog prior to client installation summarizes your selections. After reading this summary, press **Install** to begin installation.

	<p style="text-align: center;">Note – for Win 8 only</p> <p>Win 8 – Installing Microsoft SQL Server 2005 Express (installs automatically during zzzPAT installation)</p> <p>During the installation you may get the following dialog . Press option “Don’t show this message again” and select “Run the program without getting help”.</p>
	

At the end of the installation the final dialog is displayed.



At the end of the installation you should restart your computer.

5. Login to zzzPAT

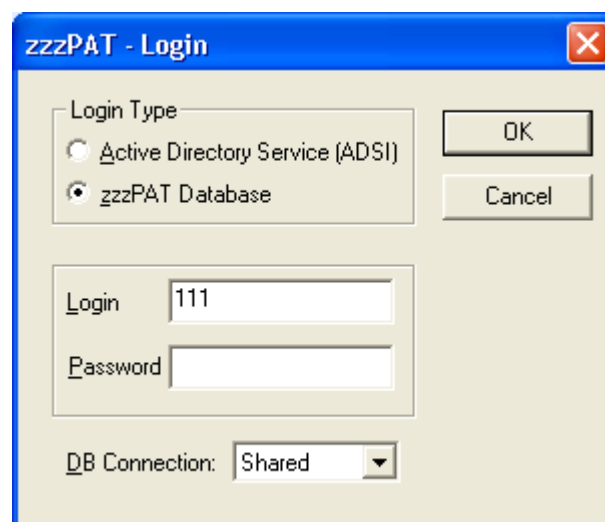
A login name and password are needed to operate this software.

The default administrator login information is:

Login name: 111

Login password: 111

To modify the administrator login name and password, and to add/modify additional users, refer to User Administration section in Operation Manual, which can be found in the installation CD.



6. Testing Installation


In order to verify successful installation do the following steps:

- Import a file from the Samples folder in the installation CD (In the zzzPAT application menu open Tools > Import > Import from Folder > Browse Select the Samples folder from the installation CD and then press Import)
- After import is completed, open a study and issue a report.

7. Upgrading from previous versions

Before upgrading from a previous zzzPAT version, the older version must be uninstalled. The zzzPAT installer will identify if the older version has not been removed and will prompt you to uninstall it.

The upgrade will be performed automatically the first time zzzPAT is launched following an upgrade of zzzPAT, only if the database folder remained the same as the previous installation.

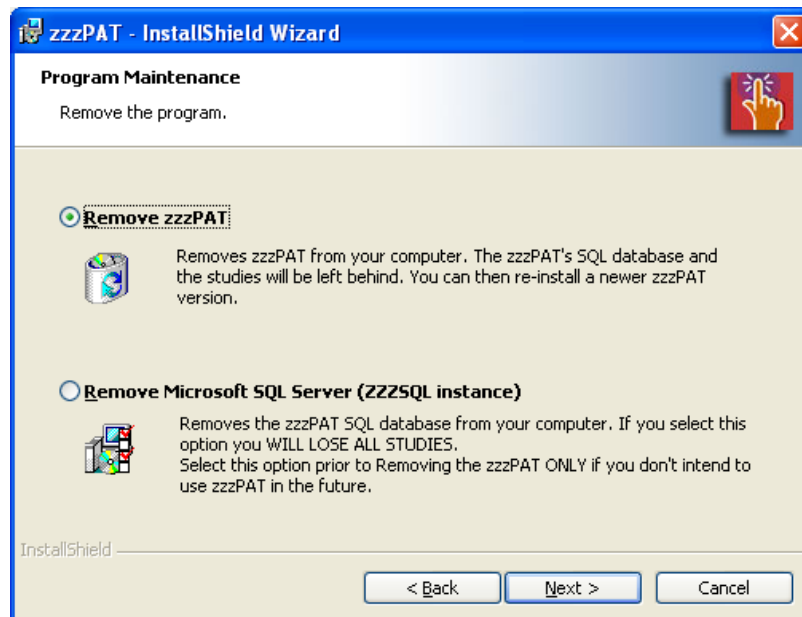
	<p style="text-align: center;">Note</p> <p>Uninstalling zzzPAT does not remove the zzzPAT database, however, it is strongly recommended to backup the database before upgrading.</p>
---	---

Follow these steps in order to upgrade to a newer zzzPAT version:

- Backup the entire database of the existing zzzPAT installation (see Database Wizard, Backup section in Operation Manual which can be found in the installation CD).
- Uninstall the previous version using 'Add/Remove Programs' applet in Control Panel (see section 8 Uninstalling).
- Select 'Setup.exe' from the zzzPAT installation CD-ROM to start the zzzPAT installation program.


8. Uninstalling

You can uninstall zzzPAT using the Add/Remove Programs in the Control Panel. Additional options are available if you insert the installation disk to the CD drive. The following dialog then appears.



Use the "Remove zzzPAT" option if you wish to uninstall in order to re-install a newer version.

If you wish to remove the MS SQL server from your computer (and lose all studies in the database) you can select the "Remove Microsoft SQL Server" option prior to selecting the "Remove zzzPAT" option.

	<p style="text-align: center;">Warning</p> <p>Selecting the "Remove Microsoft SQL Server" will result in losing all studies in the database.</p>
---	--

9. Troubleshooting

9.1 *If Connection to database can not succeed and you have the Firewall as ON*
Ensure that the following exceptions are added to the Firewall:

- C:\Program Files\Microsoft SQL Server\90\Shared\sqlbrowser.exe
- C:\Program Files\Microsoft SQL Server\MSSQL.x\MSSQL\bin\sqlservr.exe (x may be 1,2, etc depending on the current number of instances, the last instance will be the zzzSQL instance)

9.2 *If you did not want to use the "Everyone" group and defined a group of "zzzPAT Users" with Full Access to the shared folder but you encounter problems updating the database:*

Ensure that you give the **same permissions** as granted to the "zzzPAT Users" group, to the following services:

SQL Server (ZZZSQL)
SQL Server VSS WRITER

For additional information or for assistance in the zzzPAT installation process, please contact Itamar Medical customer support, or your local dealer.

Itamar Medical Ltd.

Support numbers can be found in the Support section of Itamar Medical website, at www.itamar-medical.com