

iCN 510

with SmartST™ Version 3.0

User Manual



NAVMAN

Contents

1. Introduction.....	4
2. iCN Features	5
3. Memory Card.....	8
4. Turning your iCN On and Off.....	9
5. Position in a Vehicle	10
6. Main Menu Screen.....	11
7. Screen Keyboard	11
8. GPS Status.....	12
9. Setting your Destination.....	13
10. Avoiding an Area.....	18
11. Viewing Your Route.....	19
12. Map Screen Pop-up Menu	22
13. Route Demonstrator	23
14. Favourites & Shortcuts.....	24
15. Settings.....	26
16. SmartST Desktop.....	32
17. Updating your iCN	33
18. Installing Maps Using SmartST Desktop	33
19. Continuous Continental Navigation	34
20. SmartST Desktop Advanced Features	36
21. Accessories	38

1. Introduction

Whether you travel in your own country, or overseas, the iCN will direct you to your destination without the need for map books and second-hand instructions.

The Global Positioning System is available free of charge, at any time, and is accurate to within 5 m (15 ft). Your iCN map provides street level detail for door-to-door navigation, including Points Of Interest (POIs) such as accommodation, railway stations and airports.

Use this guide to learn how to operate it effectively and safely, plus find out all of the different features available to you.

GPS and GPS Signals

The Global Positioning System (GPS) is a network of satellites that transmit accurate time and position information worldwide. GPS receivers receive signals from these satellites, and use the information to determine an exact location. Satellites orbit the Earth at around 12,000 miles. While a GPS receiver can detect signals from up to 12 satellites at any one time, only three are needed to provide a position or “fix” (latitude and longitude) for vehicle navigation systems.

The iCN GPS antenna receives GPS signals. To receive GPS signals, ensure the iCN is outdoors, or in a vehicle outdoors, and the GPS antenna has an unobstructed view of the sky. The iCN can operate in all weather types except snowfall.

Safety Notice

In a vehicle, it is your sole responsibility to place, secure, and use the iCN in a manner that will not cause accidents, personal injury or property damage. The user of this product is solely responsible for observing safe driving practices. It is your sole responsibility that the vehicle mount installation instructions are read carefully, understood, and used consistent with the laws of operation for each country in which the device is used.

It is your sole responsibility to adhere to the following safety instructions at all times.

- Do not operate the iCN while driving or place the iCN in a position that obstructs the driver's view
- Do not mount in a way that interferes with airbags or other safety equipment
- Do not leave in view while your vehicle is unattended, especially in strong sunlight
- Do not use or handle the iCN when it is hot, leave it to cool out of direct sunlight

Navman disclaim all liability for use of this product in a way that may cause accidents, damage or may violate law.

2. iCN Features

It is recommended that you familiarize yourself with the basic operations of your iCN such as using the stylus, 4-way toggle and volume control.

Front Components



	Component	Description
1	Charge Indicator	Amber indicates that battery is charging; Green indicates that battery is fully charged.
2	Touch Screen	Tap with the stylus to select menu options or enter information.
3	Home	Displays the Main Menu screen. Press and hold to reset the iCN.
4	Power	Turns the iCN on or off. When off, the iCN enters a suspended state.
5	Page	View further screens, or change map screen.
6	ESC	Cancels an action, deletes the last text character, returns to the previous screen. Press and hold to delete a line of text.
7	+	Zoom in on <i>Map</i> , <i>3D Map</i> and <i>Next Turn</i> screens. Press and hold to increase brightness.
8	-	Zoom out on <i>Map</i> , <i>3D Map</i> and <i>Next Turn</i> screens. Press and hold to decrease brightness.
9	4-Way Toggle	Move up, down, left or right. Press centre to select. Press up or down to adjust the viewing angle on the 3D Map screen.
10	Speaker	Outputs voice commands and warnings. Use Volume dial to adjust.

Back Components



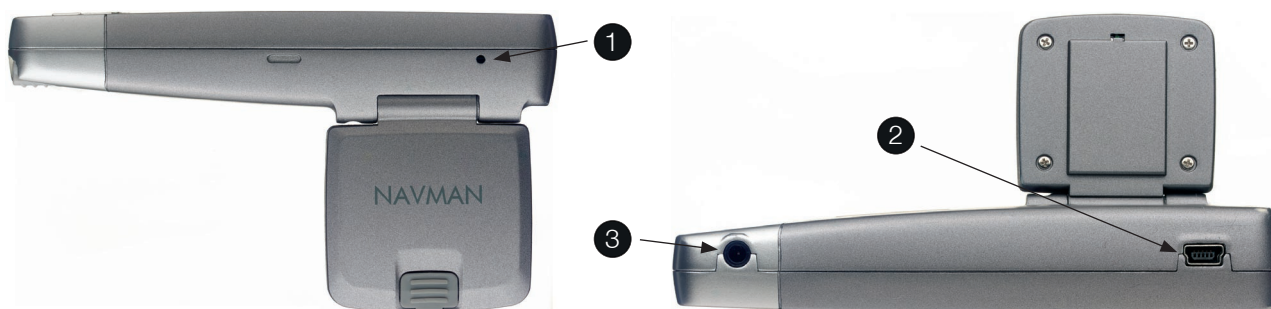
	Component	Description
1	Battery Switch	Must be set to ON for normal use. Switching to OFF will turn the battery off, saving battery power.
2	GPS Receiver	Receives signals from GPS satellites when lifted out to the horizontal position.
3	Car Antenna Socket	Connection socket for GPS car antenna (not included). Protected by rubber cover.

Side Components



	Component	Description
1	SD/MMC Slot	Slot for memory card.
2	Stylus	Used to tap the screen to make selections and enter information. Pull out the slot to use and insert in the slot to store.
3	Volume Control	Rotate up or down to hear a sound test. Rotate and hold to adjust volume.
4	Headphone Socket	Connection socket for headphones (not included).

End Components



	Component	Description
1	Reset	Resets iCN. Press using stylus.
2	USB Socket	Connection socket for USB cable to your computer.
3	Power Socket	Connection socket for power cable.

Stylus



The stylus is your input device. Pull the stylus out of the slot and extend it for ease of use. Store it in the slot when not in use.

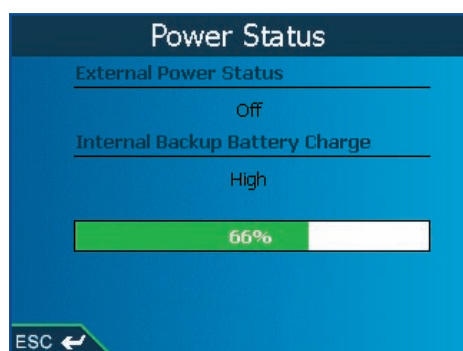
- Tap the screen with the stylus to select
- Tap and drag the screen with the stylus to navigate the *Map* and *3D Map* screens.

Internal Battery

The iCN has an internal battery that when fully charged should power the iCN for 4 hours.

You can monitor battery power at the *Power Status* screen:

Main Menu > Settings > More Settings > Hardware > Power Status



Charging the Battery

When the battery is charging, the Charge Indicator is amber. When the battery is fully charged, the Charge Indicator is green.

- To charge the iCN in a vehicle, plug the power adapter into the socket on the bottom of the iCN and the other end into the vehicle lighter socket.
- To charge the iCN from the mains power, plug the power pack into the socket on the bottom of the iCN and the other end into the mains.

3. Memory Card

Your iCN comes with a memory card containing a preactivated map of the region in which it was purchased. To navigate to your destination you will first need to insert the memory card into your iCN.

Warning: If any of the files on the card are deleted, you will need to reinstall the map to the memory card from the enclosed Map CD using SmartST Desktop on your computer. See SmartST Desktop on page 32.

Inserting Memory Card

To insert the memory card, gently insert the card in the SD/MMC slot with the label facing the front of the iCN.



Removing Memory Card

To remove the memory card, gently push the top edge of the card to release it and pull it out of the slot.

4. Turning your iCN On and Off

The first time you use the iCN you will need to switch the **Battery Switch** on the back of the iCN to **ON**. Switch the **Battery Switch** to **OFF** if you are not going to be using the iCN for a period of time, as this will save battery power.

Use the **Power** button to turn your iCN on and off during normal use. When it is off, your iCN enters a suspended state and the system stops operating. When you turn your iCN on, it returns to the screen you were last viewing.

Turn iCN On

1. Ensure that the memory card is inserted in the SD/MMC slot.
2. Gently pull the bottom of the GPS receiver away from the iCN. The receiver will lift out to a horizontal position to allow it to obtain a GPS fix.
3. Use the stylus to switch the **Battery Switch** to **ON**.



4. Press the **Power** button.

Turn iCN Off

Press the **Power** button. The iCN will enter suspend state and the screen will shut down.

If you are not going to be using the iCN for a period of time, remove it from the suction mount bracket if necessary, and gently push the GPS receiver back towards the iCN. The receiver will click in to place. Switch the **Battery Switch** to **OFF**.

Reset iCN

Normally you do not need to reset your iCN, however should your iCN not turn on or not respond, you can reset it to solve the problem.

To reset your iCN, either:

- a. Press and hold the **Home** button. The message *Reset Device?* will display. Tap **Yes**.
- b. Use the stylus to press the **Reset** button on the top of the iCN.

5. Position in a Vehicle

Before you begin, check if your vehicle is fitted with a heat reflecting or heated windshield. If so, you will need to purchase an external antenna for your iCN to receive GPS signals.

There are a number of ways to position an iCN in a vehicle. Follow these instructions carefully.

- For security and to avoid overheating, do not leave your iCN in an unattended vehicle, especially in strong sunlight.
- Do not use or handle the iCN when it is hot — leave it to cool out of direct sunlight.

Suction Mount

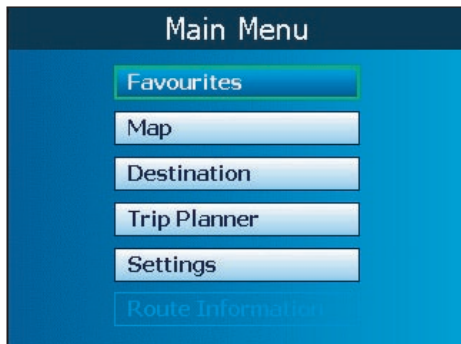
1. Slip the locking nut over the ball foot.
2. Snap the socket clip onto the ball foot and tighten the locking nut onto the thread of the socket clip.
3. Clean and dry the surfaces, hold the suction cup firmly against the glass and press down the lever.
4. Open the antenna outwards, so it has a clear view of the sky.
5. Position the two locating slots on the underside of the iCN into the tabs on the socket clip. Push the iCN into the clip.
6. Plug the power adapter into the socket on the bottom of the iCN and the other end into the vehicle lighter socket.



6. Main Menu Screen

The *Main Menu* screen gives you access to all of the iCN's functions, including navigating to a destination:

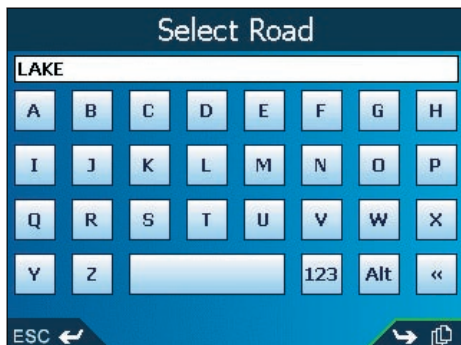
1. Press the **Power** button.
2. The *Language* screen will display. Tap your language choice. Tap the **Page** icon.
 - You can stop the *Language* screen displaying on startup by selecting the *Do not show on startup* check box.
3. The *Warning* screen will display. Read the warning message and tap **Accept** to confirm that you understand.
4. The *Tutorial* will display. Tap the **Page** icon to move through the screens.
 - You can stop the *Tutorial* displaying on startup by selecting the *Do not show Tutorial on startup* check box.
5. The *Main Menu* screen will display. Tap a *Main Menu* option to select it.
 - Return to the *Main Menu* at any time by pressing the **Menu** button.



7. Screen Keyboard

The screen keyboard will display when required to enter text, such as when entering a street name.

1. Tap the required characters, or navigate and select using the **4-way toggle**.
 - Hold the **ESC** button to delete the line
 - Press **123** to display the Numeral/Symbol keyboard
 - Press **Alt** to display the Alternative keyboard
 - Press **ABC** to return to the Alphabetical keyboard.
2. Press **Page** to view search results.
3. Use the **4-way toggle** to select a search result from the list. Press **OK**.

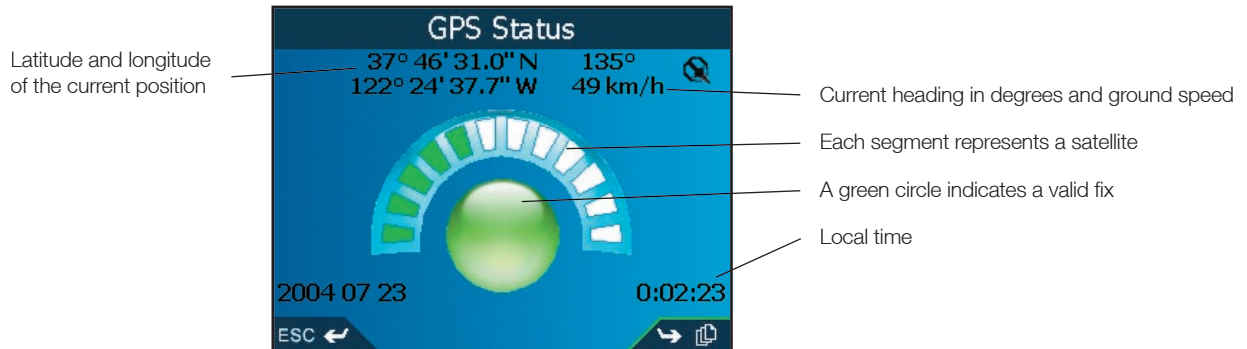


8. GPS Status

Signals are transmitted by Global Positioning System (GPS) satellites orbiting the Earth. This screen provides a visual representation of the information being received. Latitude and longitude are displayed, along with a North-pointing compass, the heading in degrees and ground speed. Satellites available are shown as segments.

From the *Map*, *3D Map*, *Next Turn* or *Next Four Turns* screen, tap the **GPS Indicator**. The *GPS Status* screen will display.

- **Yellow Segment** — a satellite is being tracked but is not being used
- **Red** — a satellite is being used to determine a two dimensional (2D) fix
- **Green** — the satellite is being used to determine your position.



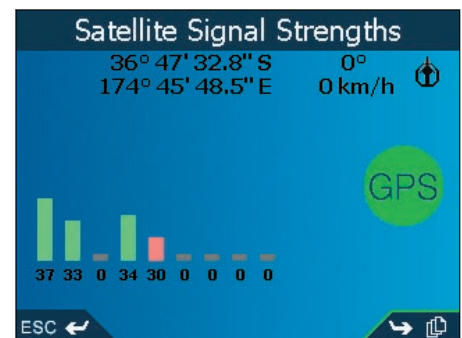
The circle under the satellite segments is green when there is a valid fix (2D or 3D), and red when there is no fix. While a 2D fix is sufficient to maintain a valid fix, a 3D fix is more accurate.

Satellite Signal Strength

From the *GPS Status* screen, press the **Page** button to display the *Satellite Signal Strengths* screen. The strength of each satellite is displayed on a bar chart.

The circle on the right-hand side of the screen displays green when there is a valid fix (2D or 3D), and red when no fix is available. The satellites available from your current position are shown as bars.

- **Grey** — no signal at all
- **Red** — this signal is not being used to fix your position
- **Green** — this signal is being used to fix your position.



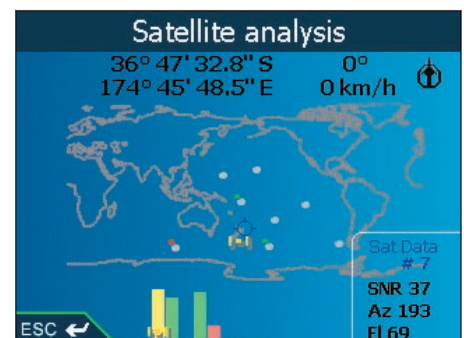
Satellite Position Indicators

From the *Satellite Signal Strengths* screen, press the **Page** button to display the *Satellite analysis* screen.

The position of each satellite is shown in relation to Earth. You can view the status and performance of a satellite by selecting it using the **4-way toggle**. The satellite performance will display.

Each satellite is represented by a small empty circle.

- Empty circle — no signal
- Red circle — a signal not being used to fix your position
- Green circle — a signal being used to fix your position
- Yellow satellite icon — shows the current satellite.



9. Setting your Destination

Before you travel, you must specify a destination.

To a Street Address

1. From the *Main Menu*, tap the **Destination** option.
2. From the *Destination* screen, tap **Address**. The *Destination-Address* screen will display.

3. Select a **Country** by tapping the left and right arrows.
4. To select a **Region** or **State** tap the textbox. Use the keyboard to select a region. Tap the **Page** icon.
5. To select a **Postcode** or **ZIP Code**, tap the textbox. Use the keyboard to select a postcode or ZIP code. Tap the **Page** icon.
6. To select a **Town**, tap the textbox. Use the keyboard to select a town. Tap the **Page** icon.
7. To select a **Road**, tap the textbox. Use the keyboard to select a road. Tap the **Page** icon.
8. Tap the **Page** icon to display the *Address-Details* screen.
9. Choose one of the following options::
 - **Add to Trip** - Opens the *Trip Planner* screen and adds the destination to your trip
 - **Save** - Saves the destination as a Shortcut or Favourite
 - **Show** - Displays the address on the *Map* screen
 - **Go** - Calculates the route and displays it on the *3D Map* screen.

To the Intersection of Two Streets

1. From the *Main Menu*, tap the **Destination** option.
2. From the *Destination* screen, tap **Intersection**. The *Destination-Intersection* screen will display.

3. Select a **Country** by tapping the left and right arrows.

4. To select a **Region** or **State** tap the textbox. Use the keyboard to select a region. Tap the **Page** icon.
5. To select a **Postcode** or **ZIP Code**, tap the textbox. Use the keyboard to select a postcode or ZIP code. Tap the **Page** icon.
6. To select a **Town**, tap the textbox. Use the keyboard to select a town. Tap the **Page** icon.
7. To select the first intersecting street, tap the **Int of.** textbox. Use the keyboard to select a street. Tap the **Page** icon.
8. Tap the **And** textbox. A list of intersecting streets will display. Select a street.
9. Tap the **Page** icon to display the *Intersection Details* screen.
10. Choose one of the following options:
 - **Add to Trip** - Opens the *Trip Planner* screen and adds the destination to your trip
 - **Save** - Saves the destination as a Shortcut or Favourite
 - **Show** - Displays the address on the *Map* screen
 - **Go** - Calculates the route and displays it on the *3D Map* screen.

To a City or Town Centre

1. From the *Main Menu*, tap the **Destination** option.
2. From the *Destination* screen, tap **City/Town Centre**. The *Destination - City/Town Centre* screen will display.

3. Select a **Country** by tapping the left and right arrows.
4. To select a **Region** or **State** tap the textbox. Use the keyboard to select a region. Tap the **Page** icon.
5. To select a **Postcode** or **ZIP Code**, tap the textbox. Use the keyboard to select a postcode or ZIP code. Tap the **Page** icon.
6. To select a **City/Town**, tap the textbox. Use the keyboard to select a town. Tap the **Page** icon.
7. Tap the **Page** icon to display the *Address Details* screen.
8. Choose one of the following options:
 - **Add to Trip** — Opens the *Trip Planner* screen and adds the destination to your trip
 - **Save** — Saves the destination as a Shortcut or Favourite
 - **Show** — Displays the address on the *Map* screen
 - **Go** — Calculates the route and displays it on the *3D Map* screen.

To a Point-Of-Interest (POI)

A POI is a named site, feature, landmark or public venue. POIs are stored in **Categories**, such as parks and museums. POIs can be displayed as icons on a map.

1. From the *Main Menu*, select the **Destination** option. The *Destination* screen will display.
2. From the *Destination* screen, select the **Points of Interest** option. The *Destination-POI* screen will display.

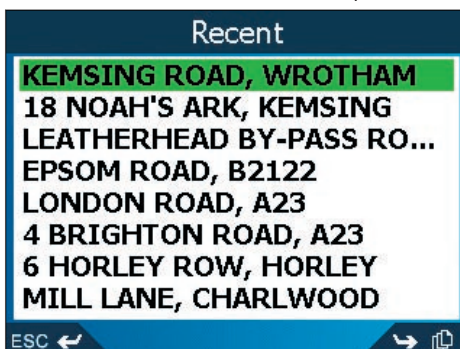


3. Select a **Category** by tapping the left and right arrows.
4. Select a **Type** by tapping the left and right arrows.
5. Select a **Country** by tapping the left and right arrows.
6. To select an **Area**, tap the textbox. Use the keyboard to select an area. Tap the **Page** icon.
7. The *Select POI* screen will display. Use the keyboard to select an POI. Tap the **Page** icon.
8. Select a POI from the list. Tap the **Page** icon to view more.
9. The *POI Detail* screen will display. Choose one of the following options:
 - **Add to Trip** - Opens the *Trip Planner* screen and adds the destination to your trip
 - **Save** - Saves the destination as a Shortcut or Favourite
 - **Show** - Displays the address on the *Map* screen
 - **Go** - Calculates the route and displays it on the *3D Map* screen.

To a Recent Destination

The last 30 routes are stored as Recent destinations. *Recent* is only available if a route has been calculated.

1. From the *Main Menu*, tap the **Destination** option.
2. From the *Destination* screen, tap **Recent**. The *Recent* screen will display.

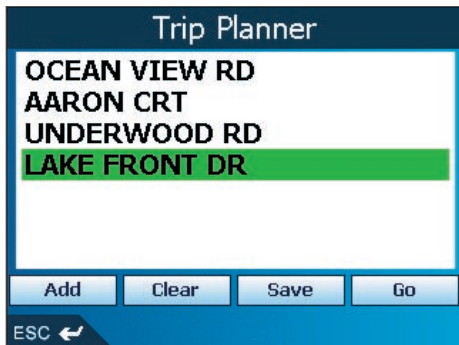


3. Select a destination from the list. The *Address Details* screen will display.
4. Choose one of the following options:
 - **Add to Trip** — Opens the *Trip Planner* screen and adds the destination to your trip
 - **Save** — Saves the destination as a Shortcut or Favourite
 - **Show** — Displays the address on the *Map* screen
 - **Go** — Calculates the route and displays it on the *3D Map* screen.

Multiple Destination Points with the Trip Planner

You can use the Trip Planner to set multiple destination points for your trip. Your route will be calculated to go via each of these points in the specified order. Destination points can be added via the *Trip Planner* screen or by selecting **Show Details** from the pop-up menu on the *Map* screen, then **Add to Trip**.

1. From the *Main Menu*, tap the **Trip Planner** option. The *Trip Planner* screen will display.



2. Tap **Add**. The *Destination* screen will open.

3. Tap **Address**. The *Destination Address* screen will open.

Note: You can also add destination points using intersections, Cities/Towns, Points of Interest and recent destinations.

4. Select a **Country** by tapping the left and right arrows.
5. To select a **Region**, tap the textbox. Use the keyboard to select a region. Tap the **Page** icon.
6. To select a **Postcode**, or **ZIP Code**, tap the textbox. Use the keyboard to select a postcode or ZIP code. Tap the **Page** icon.
7. To select a **Town**, tap the textbox. Use the keyboard to select a town. Tap the **Page** icon.
8. To select a **Road**, tap the textbox. Use the keyboard to select a road. Tap the **Page** icon.
9. Tap the **Page** icon to display the *Address-Details* screen.
10. Tap **Add to Trip**. The destination point is added to your trip. The *Trip Planner* screen will display.
 - To add another destination point, go to step 2.
11. To move a destination point up or down, tap the point. The *Address Details* screen will display.
 - Tap **Move**. The *Trip Planner* screen will display with the selected destination point highlighted.
 - Use the **4-way toggle** to move the destination point up or down the list.
 - Tap the destination point.
12. To delete a destination point, tap the point. The *Address Details* screen will display.
 - Tap **Delete from Trip**. The *Trip Planner* screen will display with the selected destination deleted.
13. Choose one of the following options:
 - **Add** - Opens the *Destination* screen to add a destination point.
 - **Clear** - Deletes all destination points
 - **Save** - Opens the *New Favourite* screen to save the trip as a Shortcut or Favourite
 - **Go** - Calculates the route and displays it on the *3D Map* screen.

Using the Map screen to Plan a Route

You can plan a route directly from the *Map* screen using the Popup menu.

1. From the *Main Menu*, tap the **Map** option. The *Map* screen will display.
 - Move round the *Map* screen using the **4-way toggle**
 - Zoom using + and - on the **Zoom/Brightness** button.

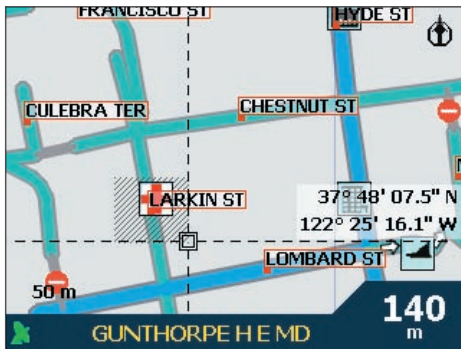
2. Tap the screen to display the cross-hair on the *Map* screen.
 - To remove the cross-hair press **ESC**.
3. Drag the intersection of the cross-hair to a destination. The street will highlight and the name will display.
4. Tap the intersection of the cross-hair, or press the **4-way toggle** button to select the street as your destination. The *Pop-up* menu will display
5. Tap **Navigate To**. The route is calculated and displayed on the *3D Map* screen.

10. Avoiding an Area

You can calculate a route that avoids a specified area on the map. Up to ten Avoid Areas can be added. Avoid Areas are displayed as shaded areas. If no alternative route exists, you will be routed through an Avoid Area.

Adding an Avoid Area

1. From the *Main Menu*, tap the **Map** option. The *Map* screen will display.
2. Tap the *Map* screen and drag the intersection of the cross-hair over the area that you want to avoid.
3. Tap the intersection of the cross-hair, or press the **4-way toggle** button to display the *Pop-up* menu.
4. Select **Add Avoid Area**. An Avoid Area is displayed.



5. Set the Avoid Area to the correct size and position using the **4-way toggle**.
6. Tap the Avoid Area or press the **4-way toggle** button to enable the Avoid Area.

Deleting an Avoid Area

1. From the *Main Menu*, tap the **Map** option. The *Map* screen will display.
2. Tap the *Map* screen and drag the intersection of the cross-hair over the Avoid Area that you want to delete.
3. Tap the intersection of the cross-hair, or press the **4-way toggle** button to display the *Pop-up* menu.
4. Select **Delete Avoid Area**. The Avoid Area is deleted.

Deleting All Avoid Areas

1. From the *Main Menu*, tap **Settings**.
2. From the *Settings* screen, tap **My Data**.
3. From the *My Data* screen, tap **Clear Data**. The *Settings - Clear Data* screen will display.
4. Tap **Clear Avoid Areas**.
 - Tap **Yes** to accept the *Warning* dialogue box.

11. Viewing Your Route

Once a route has been calculated, there are a number of ways to view it. Cycle through the screens by pressing the **Page** button. To cancel a route or stop the Route Demonstrator, return to the *Main Menu*, select the **Route Information** option, then the **Cancel Route** option.

Back-On-Track™ Automatic Rerouting

Your route is re-directed if you make a wrong turn. The **?** symbol will display upper left of the *3D Map* and *Next Instruction* screens while the route re-calculates.

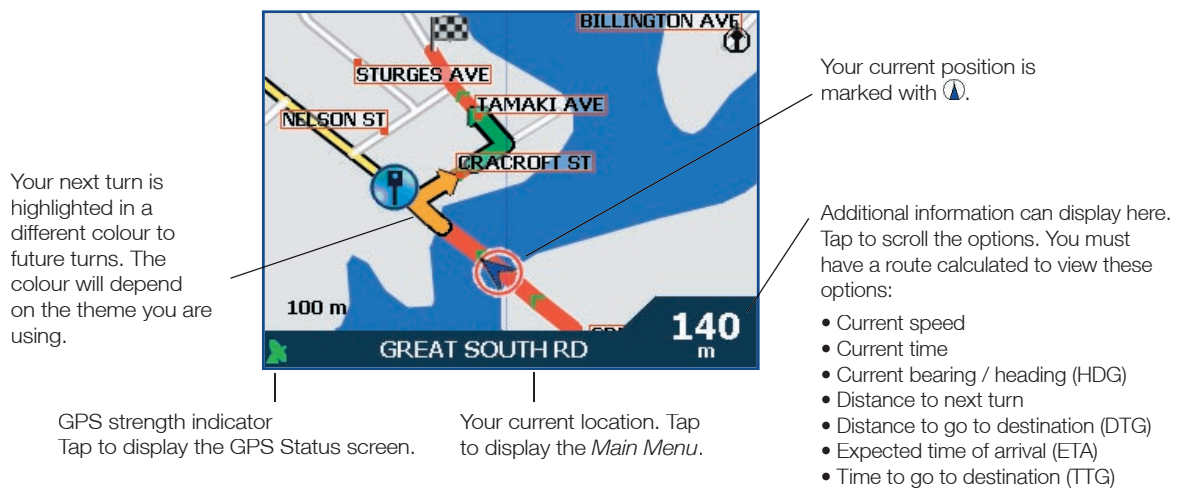
Automatic rerouting is enabled on the *Routing* screen.

Map Screen

This screen displays north, with your current position and surrounding street names. If a route has been calculated, the route and turns are highlighted.

From the *Main Menu*, select the **Map** option

- Zoom using the **+** and **-** buttons
- Tap the *Map* screen to display the cross-hair. Tap and hold the *Map* screen to display the *Pop-up* menu.

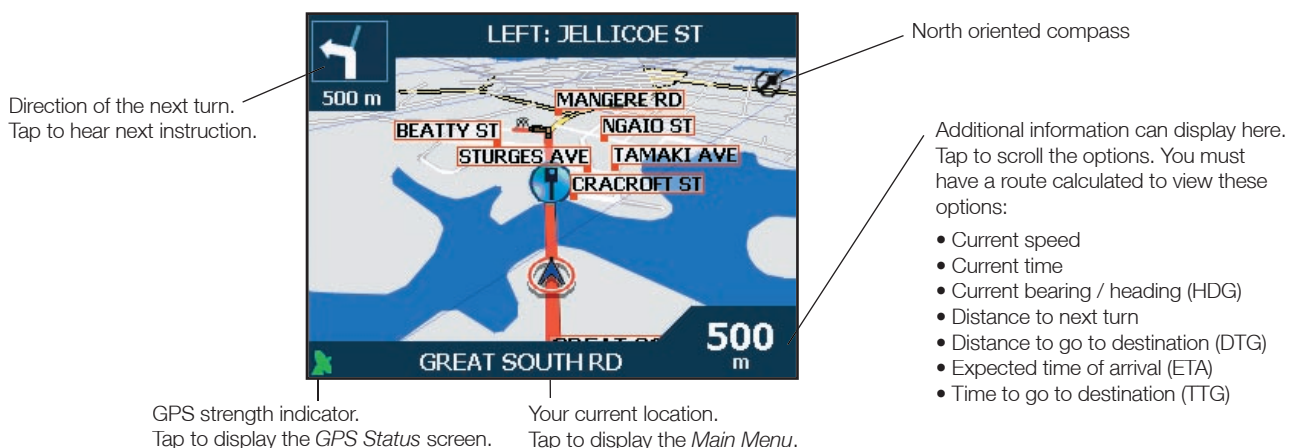


3D Map Screen

Your route displays on a map oriented to the travelling direction, with an adjustable horizon.

1. From the *Main Menu*, select the *Map* option. The *Map* screen will display.
2. Press the **Page** button to display the *3D Map* screen.

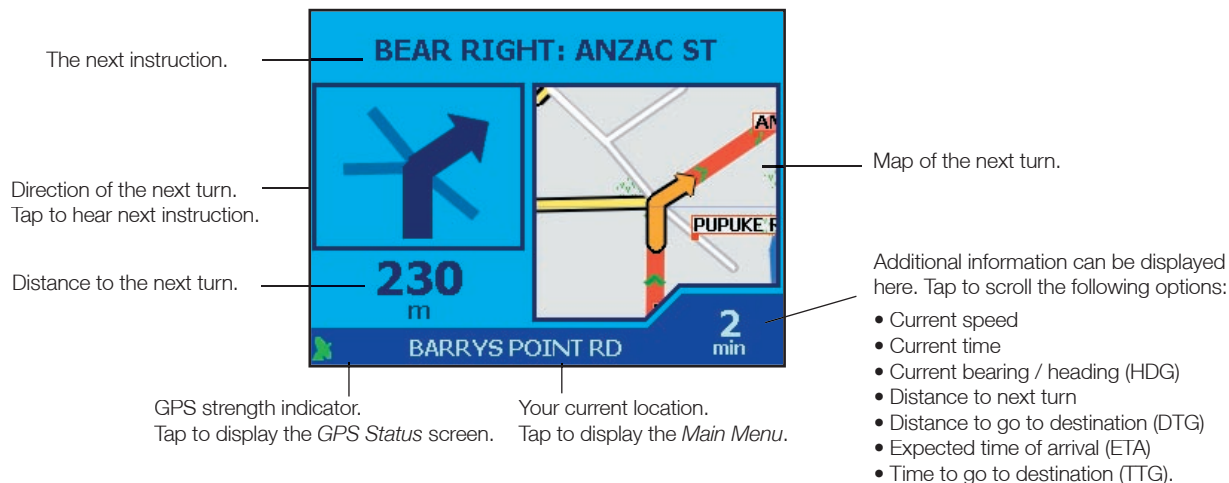
- Zoom using **+** and **-** on the **Zoom/Brightness** button
- Use the **4-way toggle** up or down to adjust the viewing angle
- Tap the *Map* screen to display the *Destination Pop-up* menu.



Next Turn Screen

Displays the turn direction, street name and the distance to the next turn. A route must have been calculated for this screen to display. Access to this screen is set on the *Settings - Display* screen.

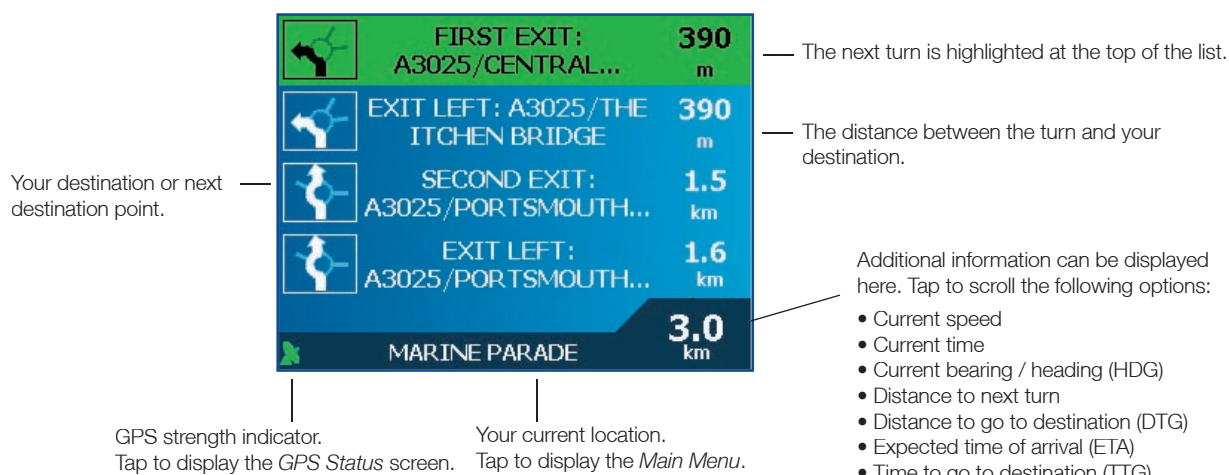
1. From the *Main Menu*, tap the **Map** option. The *Map* screen will display.
2. Press the **Page** button until the *Next Turn* screen displays.



Next Four Turns Screen

This screen displays the next four turns of your route, the turn direction, street name and the distance to the turn. A route must have been calculated for this screen to display. Access to this screen is set on the *Settings - Display* screen.

1. From the *Main Menu*, select the *Map* option. The *Map* screen will display.
2. Press the **Page** button until the *Next Four Instructions* screen displays.



Route Information

The *Route Information* screen provides information about your current route, and let's you skip a trip destination point or cancel a route. The screen is only available from the *Main Menu* when you are navigating a route.

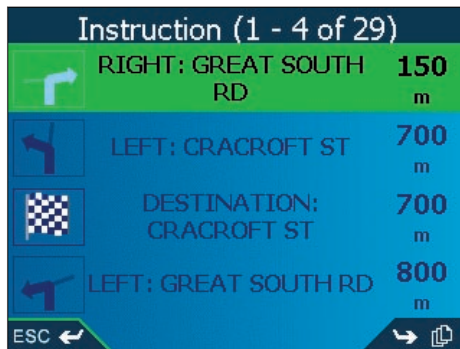
Show Route

Tap to display your entire route on the *Map* screen.

Instruction List

Tap to display the *Instruction List* screen. The *Instruction List* screen is similar to the *Next Four Turns* screen except that it displays your entire route.

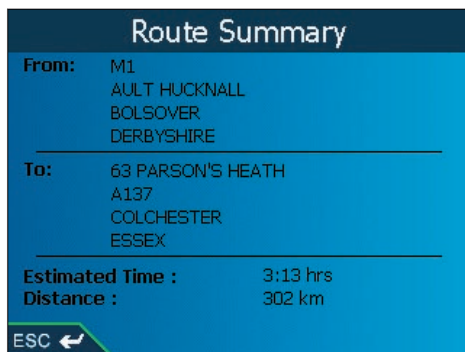
Use the **Page** icon to page through the instruction list.



Summary

Tap to display the *Route Summary* screen containing your **From** and **To** addresses, **Estimated Time** to arrival and the **Distance** remaining to your destination.

If you are navigating a multiple destination trip, the information displayed will relate to your next destination point.



Skip Destination

Tap to skip the next destination point of your trip. Only available when navigating a multiple destination trip.

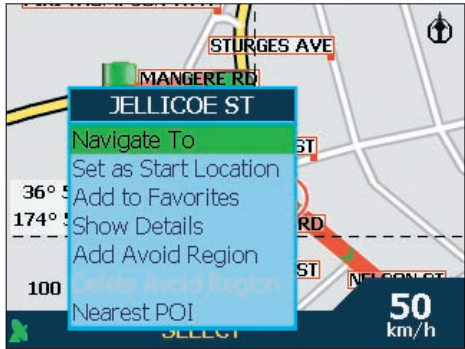
Cancel Route

Tap to cancel the route.

12. Map Screen Pop-up Menu

The *Pop-up* menu allows you to access navigational functions from the *Map* screen.

1. Move around the *Map* screen using the **4-way toggle**; Zoom using the **+** and **-** buttons.
2. Tap the *Map* screen or press the **4-way toggle** button to display the cross-hair.
 - To remove the cross-hair press **ESC**.
3. Drag the intersection of the cross-hair to a destination. Where the cross-hair intersect on a street, the street will highlight and the street name will display.
4. Tap the intersection of the cross-hair, or press the **4-way toggle** button to display the *Pop-up* menu.



5. You can choose one of the following options:

Navigate To	Calculates a route from your current location
Set as Start Location	Sets the location as your departure point
Add to Favourites	Allows you to save your location as a Favourite or Shortcut
Show Details	Displays the <i>Address Details</i> screen
Add Avoid Area	Defines an area on the map that is avoided during your journey
Delete Avoid Area	Deletes an Avoid Area if enabled
Nearest POI	Displays the Destination-POI screen. Page displays the <i>Select nearest POI</i> screen or further screens if available.

13. Route Demonstrator

The Route Demonstrator allows you to:

- Preview a route, or
- Plan and view a route without a GPS fix, such as when you are inside a building.

Step 1. Activate Route Demonstrator

1. From the *Main Menu*, tap the **Settings** option.
2. From the *Settings* screen, tap **Routes**. The *Routing* screen will display.
3. Tap **Page** twice.
4. Select the *Demonstrate Route* check box.
5. Tap **ESC** repeatedly until the *Map* screen displays.
 - Tap **Yes** to accept the *Warning* dialogue box.

Step 2. Select Departure Point

If you have a GPS fix, you do not need to select a departure point unless the demonstrated route is to start elsewhere.

1. From the *Main Menu*, tap the **Map** option. The *Map* screen will display.
2. Tap the *Map* screen and place the intersection of the cross-hair over a departure point using the **4-way toggle**.
3. Tap the intersection of the cross-hair, or press the **4-way toggle** button to display the *Pop-up* menu.
4. Select **Set as Start Location**.

Step 3. Select Destination Point

1. Tap the *Map* screen and place the intersection of the cross-hair over your destination point using the **4-way toggle**.
2. Tap the intersection of the cross-hair, or press the **4-way toggle** button to display the *Pop-up* menu.
3. Select **Navigate To**. The *3D Map* screen will display and the Route Simulator starts your route.
 - If you have selected the *Repeat* check box on the *Routing* screen, the Route Demonstrator will repeat until you stop it.

To Disable Route Demonstrator

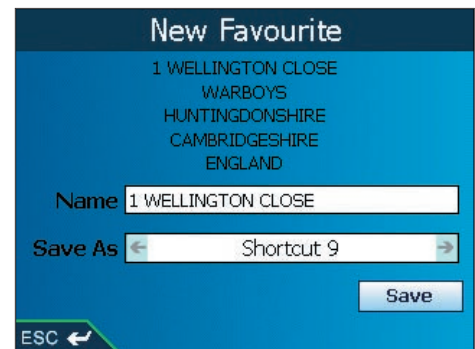
1. Press **Menu** to return to the *Main Menu* screen
2. Tap the **Route Information** option, then the **Cancel Route** option. You will be returned to the *Main Menu* screen.

14. Favourites & Shortcuts

You can save up to 200 destinations as Favourites, 10 of which can be Shortcuts.

Saving Favourites and Shortcuts

1. From the *Main Menu*, select the **Destination** option.
2. From the *Destination* screen, select the **Address** option. The *Destination-Address* screen will display.
Note: You can also add a Favourite or Shortcut using intersections, Cities/Towns, Points of Interest and recent destinations.
3. Select a **Country** by tapping the left and right arrows.
5. To select a **Region**, tap the textbox. Use the keyboard to select a region. Tap the **Page** icon.
6. To select a **Postcode** or **ZIP Code**, tap the textbox. Use the keyboard to select a postcode or ZIP code. Tap the **Page** icon.
7. To select a **Town**, tap the textbox. Use the keyboard to select a town. Tap the **Page** icon.
8. To select a **Road**, tap the textbox. Use the keyboard to select a road. Tap the **Page** icon.
9. Tap the **Page** icon to display the *Address-Details* screen.
10. Tap **Save**. The *New Favourite* screen will display.
11. Tap the **Name** box. The *Enter Name* screen will display
 - Press and hold the **ESC** button to clear the text box if required.
 - Use the keyboard to enter a name for the Favourite or Shortcut.
 - Tap **Enter**. The *New Favourite* screen will display.
12. Tap the **Save As** box and use the left and right arrows to save as a Favourite or Shortcut.
13. Tap **Save** to save the Favourite or Shortcut.
*Note: If you save a Shortcut over a Shortcut, a warning message will display. Choose **No** to return to the **Edit Favourite** or **Edit Shortcut** screen or **Yes** to return to the Shortcut list.*



Saving Favourites and Shortcuts from the Map Screen

1. From the *Main Menu*, tap the **Map** option. The *Map* screen will display.
2. Tap the *Map* screen or press the **4-way toggle** button to display the cross-hair.
3. Position the intersection of the cross-hair on a destination using the **4-way toggle**. Where the cross-hair intersect on a street, the street will highlight and the street name will display.
4. Tap the intersection of the cross-hair, or press the **4-way toggle** button to display the *Pop-up* menu.
5. Select **Add to Favourites**. The *New Favourite* screen will display.
6. Tap the **Name** box. The *Enter Name* screen will display
 - Press and hold the **ESC** button to clear the text box if required.
 - Use the keyboard to enter a name for the Favourite or Shortcut.
 - Tap **Enter**. The *New Favourite* screen will display.
7. Tap the **Save As** box and use the left and right arrows to save as a Favourite or Shortcut.
8. Tap **Save** to save the Favourite or Shortcut. The *Map* screen will display.
*Note: If you save a Shortcut over a Shortcut, a warning message will display. Choose **No** to return to the **Edit Favourite** or **Edit Shortcut** screen or **Yes** to return to the Shortcut list*

Editing Favourites and Shortcuts

Edit the name of the Favourite or Shortcut, or save a Favourite as a Shortcut.

- From the *Main Menu* screen, select the **Favourites** option.
 - If you have saved a Shortcut, the *Shortcuts* screen will display. To edit a Favourite, press the **Page** button to display the *Favourite* screen.
- Select from the list, press **OK**. The *Edit Shortcut* or *Edit Favourite* screen will display.
- Tap the **Name** box. The *Enter Name* screen will display
 - Press and hold the **ESC** button to clear the text box if required.
 - Use the keyboard to enter a name for the Favourite or Shortcut.
 - Tap **Enter**. The *New Favourite* screen will display.
- To save a Favourite as a Shortcut, use the **4-way toggle** in the **Save As** box to select a Shortcut position.
- Tap **Save** to save the Favourite or Shortcut.

*Note: If you save a Shortcut over a Shortcut, a warning message will display. Choose **No** to return to the *Edit Favourite* or *Edit Shortcut* screen or **Yes** to return to the Shortcut list.*



Using Shortcuts

- From the *Main Menu*, tap the **Favourites** option. The *Shortcuts* screen will display.
- Select from the list. The *Edit Shortcut* screen will display.
- Tap one of the following options:
 - Save** - Saves the destination as a Shortcut
 - Delete** - Deletes the selected input
 - Show** - Displays the address on the *Map* screen
 - Go** - Calculates the route and displays it on the *3D Map* screen
 - Add to Trip** - Opens the *Trip Planner* screen from where you can add the destination to your trip.

Using Favourites

- From the *Main Menu* screen, tap the **Favourites** option.
 - If you have saved a Shortcut, the *Shortcuts* screen will display. Tap the **Page** icon to display the *Favourite* screen.
- Select from the list. The *Edit Favourite* screen will display.
- Tap one of the following options:
 - Save** - Saves the destination as a Favourite
 - Delete** - Deletes the selected input
 - Show** - Displays the address on the *Map* screen
 - Go** - Calculates the route and displays it on the *3D Map* screen
 - Add to Trip** - Opens the *Trip Planner* screen from where you can add the destination to your trip.

15. Settings

You can modify the following settings to suit your preferences.

Screen Brightness

1. Press and hold the **+** or **-** button to display the brightness indicator bar.
2. Press and hold the **+** or **-** button to adjust the brightness.

You can also adjust screen brightness from the *Screen* screen.

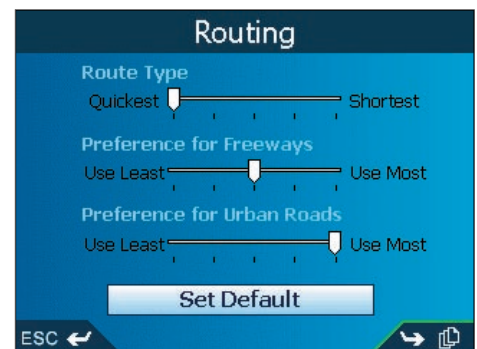
Volume

1. Rotate the **Volume Control** button up or down to hear a sound test.
2. Rotate the **Volume Control** button up or down and hold to display the volume bar.
 - Rotate the **Volume Control** button up or down to adjust the volume.

You can also adjust volume from the *Volume* screen.

Route Settings

1. From the *Main Menu*, tap **Settings**.
2. From the *Settings* screen, tap **Routes**. The *Routing* screen will display.
3. Move the **Route Type** slider towards **Shortest** to give more weighting to the shortest travelling distance when calculating a route; Move the **Route Type** slider towards **Quickest** to give more weighting to the fastest travelling time when calculating a route.
4. Move the **Preference for Freeways** slider towards **Use Less** to use freeways less often when calculating a route; Move the **Preference for Freeways** slider towards **Use More** to use freeways more often when calculating a route.
5. Move the **Preference for Urban Roads** slider towards **Use Less** to use urban roads often when calculating a route; Move the **Preference for Urban Roads** slider towards **Use More** to use urban roads more often when calculating a route.
6. Press **Page**.
7. Select the **Avoid Toll Roads**, **Avoid Unsurfaced Roads** and **Avoid Ferries** check boxes to avoid these areas when your route is calculated.
8. Select the **Warn when using Toll Roads**, **Warn when using Unsurfaced Roads** and **Warn when using Ferries** check boxes to display a warning message at the start of your trip if your route will include these areas.
9. To enable Back on Track™ automatic rerouting, select the **Automatic Rerouting** check box . Automatic rerouting will update the calculated route if you take a wrong turn.
10. Tap **Page**.
11. To enable the Route Demonstrator, allowing you to plan and view a route without a GPS fix, select the **Demonstrate Route** check box.
12. To enable the route demonstrator to be repeatedly played, select the **Repeat** check box.
13. To enable the SmartST demonstration to be played, select the **SmartST Demonstration** check box.
The demonstration will navigate between the first and second Favourite after a ten second delay.



14. To enable GPS datalogging, select **Track Recording**. The *Data Logging Enabled* screen will display.

Note: A memory card is required for datalogging.

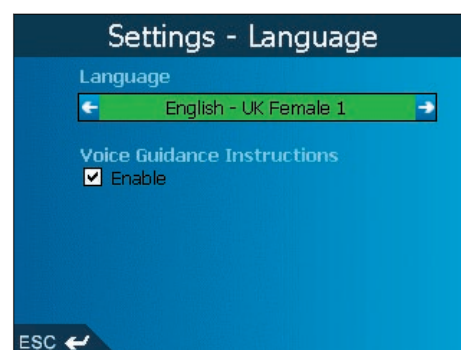
- Tap the **Name of log file** box. The *Enter Text* screen will display.
- Press and hold the **ESC** button to clear the text box if required.
- Enter a name for the log file.
- Tap **Enter**. The *Data Logging Enabled* screen will display.
- Tap **Yes**. The *Routing* screen will display.

15. Tap **ESC** repeatedly until the *Map* screen displays.

- If you have made changes to the settings, tap **Yes** to accept the *Warning* dialogue box.

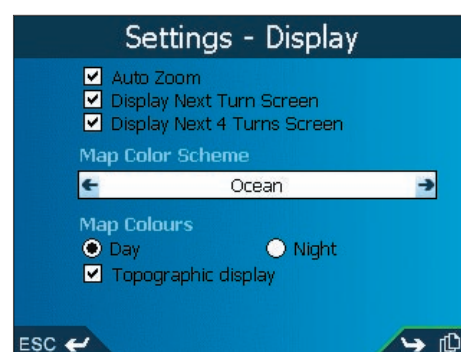
Language Settings

1. From the *Main Menu*, tap **Settings**.
2. From the *Settings* screen, tap **Language**. The *Settings - Language* screen will display.
3. To change the voice scheme used for voice guidance during navigation, select your preferred voice scheme from the **Language** box by tapping the left or right arrows.
4. To enable voice guidance during navigation, select the **Enable** check box.
5. Tap **ESC** repeatedly until the *Map* screen displays.
 - If you have made changes to the settings, tap **Yes** to accept the *Warning* dialogue box.



Display Settings

1. From the *Main Menu*, tap **Settings**.
2. From the *Settings* screen, tap **Maps**.
3. From the *Settings - Maps* screen, tap **Display**. The *Settings - Display* screen will display.
4. To enable auto-zoom when navigating to your destination, select the **Auto Zoom** check box. If selected, the *Map* and *3D Map** screen will automatically zoom in or out depending on your speed to allow optimal view of your route.
5. To enable access to the *Next Turn* screen, select the **Display Next Turn Screen** check box.
6. To enable access to the *Next 4 Turns* screen, select the **Display Next 4 Turns Screen** check box.
7. To change the colour scheme, select your preferred scheme from the **Map Colour Scheme** box by tapping the left or right arrows.
8. To improve screen contrast in light or dark conditions, select either **Day** or **Night**.
9. To display a topographical map on the *Map* and *3D Map* screens, select the **Topographic Display** check box.
10. Tap **Page**.
11. To display grid lines on the *Map* and *3D Map* screens, select the **Display Map Grid** check box.



12. To display a North pointing compass on the *Map* and *3D Map* screens, select the **Display Compass on Map** checkbox.
13. Tap **ESC** repeatedly until the *Map* screen displays.
 - If you have made changes to the settings, tap **Yes** to accept the *Warning* dialogue box.

Internal Map Settings

1. From the *Main Menu*, tap **Settings**.
2. From the *Settings* screen, tap **Maps**.
3. From the *Settings - Maps* screen, tap **Internal Maps**. The *Maps (Internal)* screen will display.
4. To activate a map, select the checkbox of the map or maps you require.
5. Tap **ESC** repeatedly until the *Map* screen displays.
 - If you have made changes to the settings, tap **Yes** to accept the *Warning* dialogue box.

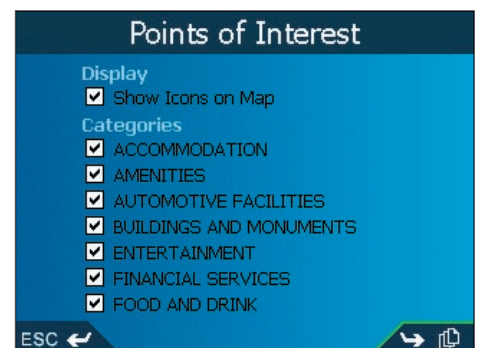
Memory Card Map Settings

1. From the *Main Menu*, tap **Settings**.
2. From the *Settings* screen, tap **Maps**.
3. From the *Settings - Maps* screen, tap **Memory Card Maps**. The *Maps (Memory Card)* screen will display.
4. To activate a map, select the checkbox of the map or maps you require.
5. Tap **ESC** repeatedly until the *Map* screen displays.
 - If you have made changes to the settings, tap **Yes** to accept the *Warning* dialogue box.

Points Of Interest (POIs) Settings

Points Of Interest (POIs) in a region are grouped into **Categories**. This function allows you to select the categories you need. For example, you may be interested in entertainment venues only, and want to disable other POI categories such as schools.

1. From the *Main Menu*, tap **Settings**.
2. From the *Settings* screen, select the **Maps** option.
3. From the *Settings - Maps* screen, tap **Points of Interest**. The *Points of Interest* screen will display.
4. To display POI icons on the *Map* and *3D Map* screens, select the **Show Icons on Map** check box.
5. To activate a POI category, select the checkbox of the category or categories you require.
 - Tap **Page** to view additional categories.
6. Tap **ESC** repeatedly until the *Map* screen displays.
 - If you have made changes to the settings, tap **Yes** to accept the *Warning* dialogue box.



My Points of Interest (POIs) Settings

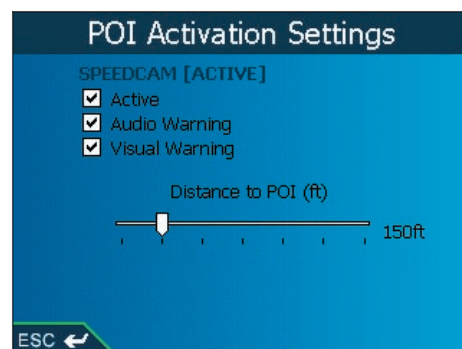
Custom Points Of Interest (POIs) are installed from the SmartST Desktop POI Editor, and listed on the *My POIs* screen.

1. From the *Main Menu*, tap **Settings**.
2. From the *Settings* screen, tap **My Data**.
3. From the *My Data* screen, tap **My POI**. The *My POI* screen will display.
4. To activate a POI file, select the checkbox of the file or files you require.
 - Tap **Page** to view additional files.
5. Tap **ESC** repeatedly until the *Map* screen displays.
 - If you have made changes to the settings, tap **Yes** to accept the *Warning* dialogue box.

Active Points Of Interest (POIs) Settings

Active POIs are custom POIs that are announced when in close proximity. Custom POIs are added from the SmartST Desktop POI Editor.

1. From the *Main Menu*, tap **Settings**.
2. From the *Settings* screen, tap **Alerts**.
3. From the *Alerts* screen, tap **Active POI**. The *Select Active POI* screen will display.
4. Enter the name or part of the name of the Custom POI. Press **Page**.
5. Select the Custom POI from the list. The *POI Activation Settings* screen will display.
6. Select the **Active** check box to activate the POI.
7. Modify the settings as required:
 - To enable an audible chime when the POI is in close proximity, select the **Audio Warning** check box.
 - To enable a visual warning when the POI is in close proximity, select the **Visual Warning** check box.
 - Move the **Distance to POI** slider to select the distance at which the warnings will activate.
8. Tap **ESC** repeatedly until the *Map* screen displays.
 - If you have made changes to the settings, tap **Yes** to accept the *Warning* dialogue box.



Speed Alert Settings

1. From the *Main Menu*, tap **Settings**.
2. From the *Settings* screen, tap **Alerts**.
3. From the *Alerts* screen, tap **Speed**. The *Settings - Speed* screen will display.
4. To enable an audible warning when travelling over a specified speed, select the speed over which the warning is to sound from the **Speed** box by tapping the left or right arrows.

*Note: The GPS signal alert will be active when a **Speed** alert is selected.*
5. Tap **ESC** repeatedly until the *Map* screen displays.
 - If you have made changes to the settings, tap **Yes** to accept the *Warning* dialogue box.

Operation Settings

1. From the *Main Menu*, tap **Settings**.
2. From the *Settings* screen, tap **Alerts**.
3. From the *Alerts* screen, tap **Operating**. The *Operating* screen will display.
4. To enable a warning dialogue box to be displayed for the driver when a button is pressed while driving, select the **Warn driver when operating** check box.
5. To enable an audible and visual alert when the GPS signal is lost, select the **Warn when GPS lost** check box.
*Note: The GPS signal alert will be active when a **Speed** alert is selected.*
6. Tap **ESC** repeatedly until the *Map* screen displays.
 - If you have made changes to the settings, tap **Yes** to accept the *Warning* dialogue box.

Clear Data Settings

1. From the *Main Menu*, tap **Settings**.
2. From the *Settings* screen, tap **My Data**.
3. From the *My Data* screen, tap **Clear Data**. The *Settings - Clear Data* screen will display.
4. To delete Recent destinations, Favourites, Shortcuts or Avoid Areas, tap the appropriate button.
 - Tap **Yes** to accept the *Warning* dialogue box.
5. Tap **ESC** repeatedly until the *Map* screen displays.

Measurement Settings

1. From the *Main Menu*, tap **Settings**.
2. From the *Settings* screen, tap **More Settings**.
3. From the *General* screen, tap **Measurements**. The *Measurements* screen will display.
4. Select either the **Decimal Degrees** or **Degrees, Minutes, Seconds** option to indicate the position format to be used.
5. To set the time, select the offset from Coordinated Universal Time (UTC) for your location from the **Local Time Offset** box by tapping the left or right arrow.
6. Select either the **12 Hour** or **24 Hour option** to indicate the time format to be used.
7. Select either the **kilometres** or **miles** option to indicate the distance units to be used.
8. Tap **ESC** repeatedly until the *Map* screen displays.
 - If you have made changes to the settings, tap **Yes** to accept the *Warning* dialogue box.

Screen Settings

1. From the *Main Menu*, tap **Settings**.
2. From the *Settings* screen, tap **More Settings**.
3. From the *General* screen, tap **Hardware**.
4. From the *Hardware* screen, tap **Screen**. The *Screen* screen will display.
5. To align the screen, tap **Align** and follow the prompts.

Note: The prompts are available in English only.

6. To adjust screen brightness, move the **Brightness** slider towards **Low** or **High**.
7. Tap **ESC** repeatedly until the *Map* screen displays.
 - If you have made changes to the settings, tap **Yes** to accept the *Warning* dialogue box.

Power Status

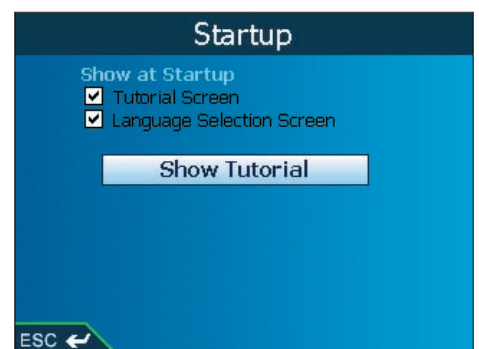
1. From the *Main Menu*, tap **Settings**.
2. From the *Settings* screen, tap **More Settings**.
3. From the *General* screen, tap **Hardware**.
4. From the *Hardware* screen, tap **Power Status**. The *Power Status* screen will display the external and battery power levels.
5. Tap **ESC** repeatedly until the *Map* screen displays.

Volume Settings

1. From the *Main Menu*, tap **Settings**.
2. From the *Settings* screen, tap **More Settings**.
3. From the *General* screen, tap **Hardware**.
4. From the *Hardware* screen, tap **Volume**. The *Volume* screen will display.
5. Move the **Volume Level** slider right to increase volume; Move the **Volume Level** slider left to decrease volume.
 - Tap **Test** to test the volume.
7. Tap **ESC** repeatedly until the *Map* screen displays.
 - If you have made changes to the settings, tap **Yes** to accept the *Warning* dialogue box.

Start Up and Tutorial Settings

1. From the *Main Menu*, tap **Settings**.
2. From the *Settings* screen, tap **More Settings**.
3. From the *General* screen, tap **Startup**. The *Startup* screen will display.
4. To display the *Tutorial* on startup, select the **Tutorial Screen** check box.
5. To display the *Language Selection* screen on startup, select the **Language Selection Screen** check box.
6. To display the *Tutorial*, select the **Show Tutorial** option and press **OK**.
 - The *Tutorial* will display. Tap **Page** to move through the screens.
7. Tap **ESC** repeatedly until the *Map* screen displays.
 - If you have made changes to the settings, tap **Yes** to accept the *Warning* dialogue box.



16. SmartST Desktop

SmartST Desktop is used to download maps to your iCN, obtain software updates, manage Custom Points of Interest (POIs) and install Basemaps.

Note: For Windows XP, install XP Service Pack 1 before you install SmartST Desktop.

Install SmartST Desktop on your Computer

Note: Microsoft ActiveSync will be installed on your desktop computer as part of the installation process if it is not already installed.

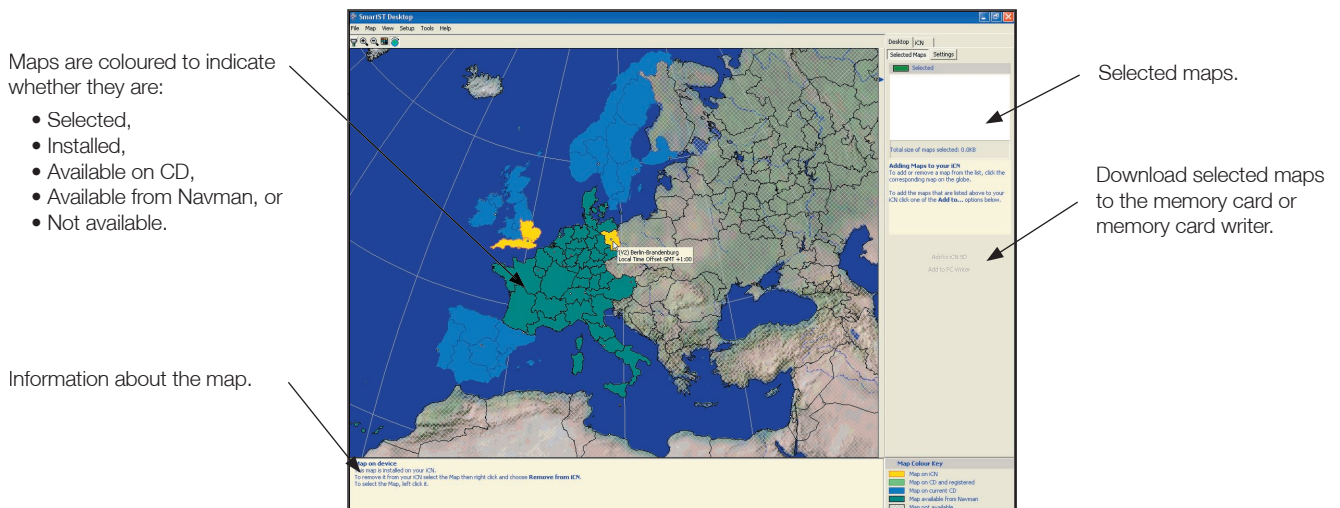
1. Close all open programs on your computer.
2. Insert the SmartST CD into your computer CD-ROM drive. The SmartST Desktop installer will start.
 - If your computer does not automatically launch the CD, start the installation manually: *Start > Run*. Type **d:\setup510_3.exe** where *d* is the letter assigned to your CD-ROM drive. Click **OK**.
3. Follow the screen prompts to install SmartST Desktop.
 - Select your preferred language for SmartST Desktop when prompted.
 - Review and accept the License Agreement when prompted.
 - Select a destination folder when prompted.

SmartST Desktop will open. You are now ready to install maps on your iCN.

Accessing SmartST Desktop

Once SmartST Desktop has been installed, you can access it from the **Start** menu:

Start > Programs > Navman > SmartST Desktop



17. Updating your iCN

It is recommended that you regularly check the Navman website for software updates to the version of SmartST you are using:

1. Open SmartST Desktop: *Start > Programs > Navman > SmartST Desktop*
2. On the **Setup** menu, select **Update software** then **Check for updates on the web**.
Your computer will connect to the Internet and display the Navman website.
3. Download the update for your region to your computer, if available.
4. On the **Setup** menu, select **Update software** then **Update software on iCN**.
Follow the prompts to update your iCN software.

18. Installing Maps Using SmartST Desktop

Your iCN comes with a preactivated map. If you require an additional map, you must first purchase a Map Product Key from your Navman supplier. Use SmartST Desktop to activate your Map Product Key and install the required map.

Install and Activate Maps on your iCN

1. Plug the USB cable into the USB Socket on the bottom of the iCN and the other end into your computer USB socket.
 - Microsoft® ActiveSync® will synchronise with your iCN.
2. Open SmartST Desktop: *Start > Programs > Navman > SmartST Desktop*
3. Insert a SmartST Map CD into your Computer CD-ROM drive, the available maps will display.
4. Click the map you want to install to your iCN. Maps are of population areas and not of political areas such as counties or states. You may need to install multiple maps to cover the desired geographical area.
 - If you have already activated a Map Product Key, or your iCN came with a pre-activated Map Product Key, the map will change colour to indicate it has been selected. Go to step 7.
5. Follow the prompts to activate the Map Product Key.
 - Enter your Map Product Key.
 - Your Computer will connect to the Internet and activate your Map Product Key.
 - You will be prompted to enter or update your contact details so Navman can advise you when updates are released.
6. Select a map to install. Maps are listed in the **Selected** section of the **Desktop Selected Maps** tab.
 - If you have another Map Product Key to activate, go to step 4.
7. Click an **Add to** button to install all maps listed in the **Selected** section of the **Desktop Selected Maps** tab to your memory card, or memory card writer.

Remove Maps from your iCN

1. Open SmartST Desktop: *Start > Programs > Navman > SmartST Desktop*.
2. Open the **Maps on iCN** section: *iCN tab > Maps on iCN*.
3. Click the map to be removed and select **Remove from iCN** from the pop-up menu.

19. Continuous Continental Navigation

You can seamlessly navigate between installed maps without the need for installing all maps en route. This is achieved by using a Basemap. A Basemap is a map of a large area, such as West Europe or the United States, containing main roads that connect cities and towns. You can select a road or POI on the Basemap as your start point or destination.

Basemaps:

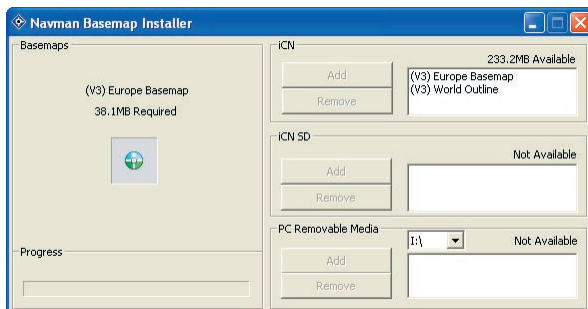
- contain roads and ferry connections of high national and international importance
- use less memory than would be necessary to install all equivalent detailed maps
- do not include smaller roads and have a reduced level of geographical detail.

You can add and remove basemaps using the Basemap Installer.

Note: Navigating in Australia or New Zealand does not require a Basemap.

Install Basemap

1. Connect the iCN to your computer.
 - Connect the iCN to mains power supply using the adapter provided.
 - Connect the USB cable to the iCN and to your computer USB port.
 - Turn on the iCN by pressing the **Power** button. The iCN *USB Connection* screen will display when you are connected.
2. Open SmartST Desktop if it is not already open: *Start > Programs > Navman > SmartST Desktop*.
3. On the *Map* menu, click **Basemaps**. The *Navman Basemap Utility* window will open.



4. Click the appropriate **Add** button to install the Basemap to the iCN, memory card or memory card reader.

Activate Basemap

1. On your iCN, from the *Main Menu*, tap the **Settings** option.
2. From the *Settings* screen, tap **Maps**.
3. Complete one of the following:
 - To activate a Basemap on the iCN, from the *Maps* screen, tap **Internal Maps**. The *Settings - Maps (Internal)* screen will display.
 - To activate a Basemap on the memory card, from the *Maps* screen, tap **Memory Card Maps** option. The *Settings - Maps (Memory Card)* screen will display.
5. Select the Basemap you require.
6. Press **ESC** repeatedly until the *Map* screen displays.
 - Tap **Yes** to accept the *Warning* dialogue box.

Remove Basemap

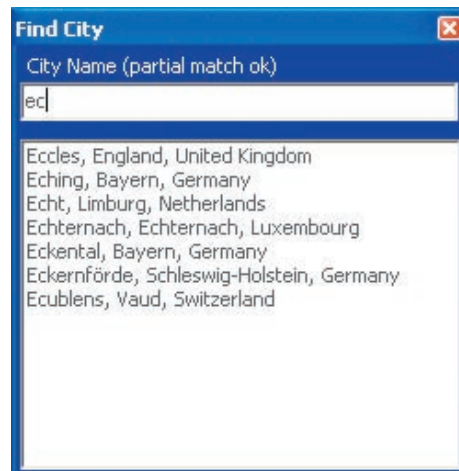
1. Connect the iCN to your computer.
 - Connect the iCN to mains power supply using the adapter provided.
 - Connect the USB cable to the iCN and to your computer USB port.
 - Turn on the iCN by pressing the **Power** button. The iCN *USB Connection* screen will display when you are connected.
2. Open SmartST Desktop if it is not already open: *Start > Programs > Navman > SmartST Desktop*.
3. On the *Map* menu, click **Basemaps**. The *Navman Basemap Utility* window will open.
4. Select the Basemap to remove.
5. Click the appropriate **Remove** button to remove the Basemap from your iCN, memory card or memory card reader.

20. SmartST Desktop Advanced Features

Find a City or Town

To search for a City or Town to verify the map to be installed:





1. From the **Map** menu, click **Find City**. The **Find City** window will open.
2. Type the name of the City or Town in the **City Name** field. The list of available Cities will reduce to match your search.
3. Double-click the name of the City or Town.
The Desktop Map will rotate to centre on the selected City or Town.



Map Colours and Textures

To access the **Desktop Colours** section: *Desktop tab > Settings > Colours*.

Adjust the settings to change the look of the map type.

Colour Settings	Description
	Controls map colours.
	Displays the: <ul style="list-style-type: none"> • map border colour • map colour • map border width
	Adjusts the map border width
	Controls the map display: <ul style="list-style-type: none"> • solid colour • no colour • crosshatch texture
<input checked="" type="checkbox"/> Show Globe Texture	Controls geographic features displayed on the map. Features are only visible if the map has no colour or crosshatch texture.

Map Layers

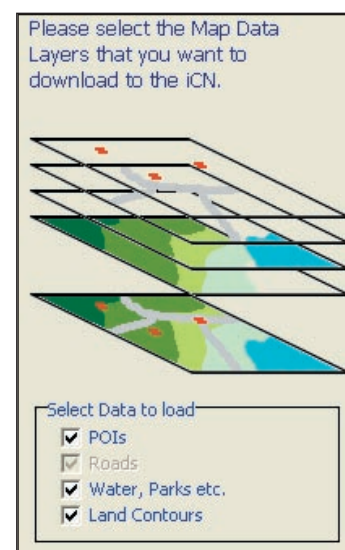
To conserve space on your iCN and memory card, you can choose map layers to install.

The layers you can choose from are:

- Points of Interest (POIs)
- Water, parks
- Land contours (topography).

To access the **Map Layers** section: *Desktop tab > Settings > Layers*.

Select or clear each checkbox to indicate the layers to install for each map.

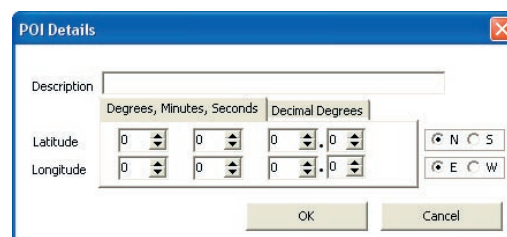


Points of Interest (POI) Editor

You can add custom Points of Interest (POIs) using the POI Editor. A maximum of 25 Custom POIs can be saved on your iCN. The Custom POI files are listed on the *My POI* screen. Custom POIs can be set to announce when in close proximity at the *Select Active POI* screen.

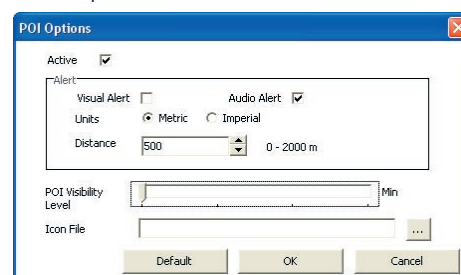
Step 1. Create a Custom POI File

1. Create a New POI File.
 - On the **Map** menu, click **POIs**. The *POI Editor* window will open.
 - On the **File** menu of the POI Editor, click **New Text File**. The *POI File Name* window will open.
 - Type a name for the file in the **File Name** box and click **OK**. The file name can be up to eight characters with no spaces.
2. Add a POI to the POI File.
 - On the **Edit** menu, click **New**. The *POI Details* window will open.
 - Type a description for the POI in the **Description** box.
 - On the **Degrees, Minutes, Seconds** tab, type or select the degree, minute and second of the POI latitude in the **Latitude** boxes.
 - On the **Degrees, Minutes, Seconds** tab, type or select the degree, minute and second of the POI longitude in the **Longitude** boxes.
3. Repeat step 2 until all POIs have been added to the POI file.
4. On the **File** menu, click **Save**. The POI file is saved.



Step 2. Save Custom POI File to your iCN

1. On the **File** menu, click **Save to Device**. The *POI Options* window will open.
2. Modify the POI settings as required:
 - To activate the POI select the **Active** check box. If you do not activate the POI, you will only be able to configure the **Importance** and **Icon File** settings.
 - To enable a visual warning when the POI is in close proximity, select the **Visual Alert** check box.
 - To enable an audible chime when the POI is in close proximity, select the **Audio Alert** check box.
 - To change the units used to measure distance for this POI, select the **Metric** or **Imperial** option.
 - Select the distance from the POI at which the visual warning should display or the audible chime is heard, from the **Distance** box.
 - Move the **POI Visibility Level** slider left or right indicate the priority that the POI has where two or more POIs are in the same locale.
 - Type the path to the icon file to be used to represent the POI, in the **Icon File** box, or select the icon file from your local or network drive clicking **...**, locating the file and clicking **Open**. The file must be a bitmap (.BMP) graphic with a minimum of 6x6 pixels and a maximum of 42x42 pixels.
3. Click **OK** and follow the prompts. The POI file is saved to the iCN.
 - If you want to change the name of the file, edit the name for the file in the *File Name* box of the *POI File Name* window and click **OK**. The file name can be up to eight characters with no spaces.



Deleting a Custom POI File from your iCN

1. On the **Device** menu, click **Manage POI Files**. The *Manage POI Files* window will open, displaying a list of custom POI files installed on your iCN.
2. Click the **File Name** or **Size** of the POI file to delete.
3. Click **Delete**. The file is removed from the list, but is not yet deleted.
4. If you want to delete more than one file, go to step 2.
5. Click **OK** and accept the changes. The selected file or files are deleted.

21. Accessories

The following accessories are available for your iCN:

External Antenna

Required for vehicles with heated windshields, and to boost GPS performance in weak signal areas.

Memory Card Writer

Connects to your computer and allows you to download maps to SD or MMC memory cards.

Software Product License

NAVMAN (THE LICENSOR) IS WILLING TO LICENSE THE iCN SmartST SOFTWARE (THE SOFTWARE) TO YOU (THE CUSTOMER) ONLY IF YOU ACCEPT ALL THE TERMS OF THIS LICENCE. PLEASE READ THE TERMS CAREFULLY, BECAUSE USING THIS SOFTWARE WILL BE DEEMED TO BE YOUR ACCEPTANCE THAT YOU ARE USING IT ON THE FOLLOWING TERMS. IF YOU DO NOT AGREE TO THE TERMS OF THIS LICENCE DO NOT INSTALL OR USE THE SOFTWARE AND RETURN THIS PRODUCT PROMPTLY, INCLUDING ALL PACKAGING AND WRITTEN MATERIALS, TO THE LICENSOR'S REPRESENTATIVE AND ANY AMOUNT YOU MAY HAVE PAID WILL BE REFUNDED (LESS DELIVERY AND HANDLING CHARGES).

1. The Licensor grants to the Customer a non-exclusive, non-transferable licence to use: (a) one copy of the Software on one of the Customer's handheld devices; and (b) the accompanying materials, including any manuals contained in the Software (the Materials), in accordance with the terms and conditions of this Licence.
2. Where the Customer uses the Software on a handheld or any other device (the Device) in a vehicle, the Customer must not place, secure or use the handheld device in a manner that may cause accidents, personal injury or property damage or in any way obstruct the visibility of the Customer. The Customer is solely responsible for observing safe driving practices and will not operate the Software while operating a vehicle.
3. The copyright and all other intellectual property rights in the Software and Materials (including any enhancements or modifications) are vested in the Licensor. The Customer must not to rent, lease, reproduce, translate, adapt, vary, reverse-engineer or modify the Software or Materials nor communicate the same to any person other than in accordance with the terms of this Licence.
4. The Customer may not copy the Software or Materials except that one copy of the Software may be made to the extent that such copying is necessary for the Customer's own backup purposes.
5. Except for the warranty provided by the Licensor for the product that includes the Software the Licensor expressly excludes to the fullest extent permitted by law all representations or warranties, express or implied (except any which may not lawfully be excluded), including the implied warranties of merchantability and fitness for a particular purpose.
6. The Licensor will not in any circumstances be liable under the law of tort, contract or otherwise for any indirect or consequential loss or damage, including any loss of profits, however caused, arising in connection with the use of, or inability to use, the Software. If any limitation or exclusion or liability contained in this Licence is held to be invalid for any reason and the Licensor becomes liable for loss or damage that would otherwise have been excluded, that liability will be limited to the total amount actually paid by the Customer for the Software.
7. The Licensor may terminate this Licence immediately if the Customer breaches any of its obligations under this Licence. Immediately following termination of this Licence the Customer must deliver to the Licensor's Representative, or destroy all copies of, the Software and Materials in whatever form possessed by the Customer.

Limited Warranty Agreement

IMPORTANT: The following terms and conditions may vary from country to country.

Hardware Product

Navman warrants its products to be free from defects in materials or workmanship under normal use for one year from the date of purchase (the Warranty Period) to the original owner (You). To claim under this warranty, You must return the product to the place of purchase, or a service centre approved by Navman (Service Centre). You must produce an original sales receipt as proof of purchase. You will be solely responsible for all shipping charges, freight, insurance and proper packaging to prevent breakage in transit. Navman will, at its discretion, repair or replace any defective product or its components at no cost to You for parts and labour. The replacement product or component takes on the warranty status of the original product or component. This is Your exclusive remedy for defective products.

Limitations

This warranty does not apply to products that have been damaged or rendered defective: (a) as a result of incorrect installation, misuse, mishandling, misapplication, accident, abuse, breakage or other external causes; (b) by operation outside the usage specifications stated in the product documentation; (c) by modification or service other than by Navman or its approved Service Centres.

Software Product

Navman warrants that (a) the software will perform substantially in accordance with the accompanying written materials for a period of 90 days from the date of purchase, and (b) any technical support provided by Navman or its approved Service Centres shall make commercially reasonable efforts to solve any problem or issues. Some countries, states and jurisdictions do not allow limitations on duration of an implied warranty, so the above limitation of 90 days may not apply.

Limitation of Liability

To the fullest extent permitted by law, Navman will not be liable in any event, whether in tort (including negligence), contract or otherwise for any damage including loss of profits, any consequential, indirect or special damage, loss or injury of any kind suffered by You or any other person. Except as expressly set out in this warranty, Navman makes no other warranties, express or implied, including any implied warranties of merchantability and fitness for a particular purpose. If any limitation or exclusion or liability contained in this warranty is held to be invalid for any reason and Navman becomes liable for loss or damage that would otherwise have been excluded, such liability will be limited to the total amount actually paid by You for the product.

Compliance

Operation is subject to the following two conditions: (1) this device may not cause interference, and (2) this device must accept any interference, including interference that may cause undesired operation of the device.

Contact Us

Support for New Zealand:

Navman NZ Ltd
13-17 Kawana Street
Northcote
Auckland
New Zealand

Phone: 0800 GONAVMAN
pcnsupport.nz@navman.com
www.navman.com

Support for US and Canada:

Navman USA Limited
27142 Burbank
Foothill Ranch
CA 92610
United States of America

Phone: 866-9-NAVMAN
support@navmanusa.com
www.navmanusa.com

Support for Europe:

Navman Europe Limited
4G Gatwick House
Peeks Brook Lane
Horley, Surrey RH6 9ST
United Kingdom

Phone: (44) 1293-780-500
support@navman-europe.com
www.navman-europe.com

Support for Australia:

Navman Australia Pty. Ltd
PO Box 479
Gladesville
NSW2111
Australia

Phone: (02) 9879 9000
pcnsupport.aus@navman.com
www.navman.com



Copyright

© 2004 Navman NZ Limited. Navman is a registered trademark of Navman NZ Limited. All rights reserved.

SmartST™, Drive-Away™ and Back-On-Track™ are trademarks of Navman NZ Limited. All rights reserved
Microsoft® Windows® 98, ME, 2000 or XP, Microsoft® ActiveSync®, Internet Explorer are registered trademarks of Microsoft Corporation.

Acrobat Reader® is a registered trademark of Adobe Systems Incorporated. All rights reserved.

All other trademarks and registrations are the property of their respective owners.

Published in New Zealand
MN000309A