

## New Product Summary

Launch Date – 2nd July 2007  
Under NDA Until – 1st June 2007

**Epson**  
**EMP S52**

### The multimedia partner that brings the big screen to work and home

The versatile Epson EMP-S52 multimedia projector gives a professional performance at work and at home. Outstanding for business or education presentations, but just as happy bringing big screen entertainment to your living room.

#### You choose – it's always ready to go

With one of the quickest start-up times on the market, this projector will turn on in just 5 seconds. Afterwards you can turn off, disconnect the power cable and be ready to move straight away.

#### You choose – it's so adaptable

After a quick, simple set up, you can rely on a perfect, uniform image from a wide range of positions, thanks to a large 30° vertical keystone correction angle. And it's great in smaller rooms too - a 60" image can be created just 1.8m from the screen.

#### You choose – it's so easy

This projector is designed for simple operation. The convenient, intuitive control panel gives you quick access to a range of information in key areas including power, status, adjustments, controls and a comprehensive help function.

#### You choose – it's brighter and better

Epson's long life, low wattage 'E-TORL' lamp is smaller and more efficient without compromising brightness and lasts for up to 4000 hours. This projector is quiet too - at just 28dB sound level, your audience will always be concentrating on your presentation.

#### You choose – it's up to you

With the Epson projectors, you're always in control. Password protection offers security, and a lockable control panel means if you have the remote, you have complete control.

#### Big screen home entertainment

##### You choose – it's your lifestyle

Whatever you choose to give the big screen treatment, from photos and movies to sports and video games, the 7 preset colour modes ensure excellent colour every time. And with the black and white enhancer, you'll see every detail even on dark or bright images.

##### You choose – it's the big screen solution

You can even create a genuine movie experience. Simply change the aspect of the screen from 4:3 format to 16:9 – just like a real cinema!

#### Entry level value, top level features.

#### For business presentations

- Compact and light, simple to set up and operate
- Enjoy unbeatable quality with Epson 3LCD technology
- Keep on the move with Quick Start, Instant Off
- AV mute slide for more effective presentations

#### For home entertainment

- Choose from 7 colour modes to optimise quality
- Add the cinema experience to your home with the 16:9 viewing format
- A true multimedia partner – from computers to gaming and DVD player to digital cameras
- Place the projector off centre with no distortion



**3LCD**  
**E-TORL**

Remote control

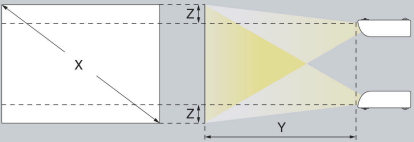


### Ordering information

<b>Description</b>	EMP- S52 LCD Projector
<b>Part Number</b>	V11H252140DA
<b>Barcode</b>	8715946390321
<b>Carton Dimensions</b>	427x379x182mm
<b>Carton Weight</b>	net= 2.7kg; gross=5.3kg

## Screen size and projection distance

Use the Epson Projection Distance Calculator software available from [www.epson.co.uk](http://www.epson.co.uk) for distances and screen sizes not shown below.



4:3 Screen size	Shortest (Wide)	Longest (Tele)	Vertical distance from center of lens to bottom edge of screen
X (screen size / dimension)	Y (cm / inch)		Z (cm / inch)
30" / 61 cm x 46 cm 24.0" x 18.1"	87 / 34	119 / 47	4 / 1.7
40" / 81 cm x 61 cm 31.9" x 24.0"	117 / 46	159 / 63	6 / 2.3
60" / 120 cm x 90 cm 47.2" x 35.4"	177 / 70	240 / 95	9 / 3.4
80" / 160 cm x 120 cm 63.0" x 47.2"	237 / 93	321 / 126	12 / 4.5
100" / 200 cm x 150 cm 78.7" x 59.1"	297 / 117	402 / 158	14 / 5.7
200" / 410 cm x 300 cm 161.4" x 118.1"	597 / 235	807 / 318	29 / 11.3
300" / 610 cm x 460 cm 240.2" x 181.1"	897 / 353	1212 / 477	43 / 17.0

## Accessories

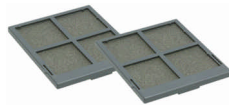
(Model code) **order code**

### Consumables

Spare Lamp (ELPLP41)  
**V13H010L41**



Air Filter Set (ELPAF13)  
**V13H134A13**



### Screens

50" Portable Screen (ELPSC06)  
**V12H002S06**



60" Portable Screen (ELPSC07)  
**V12H002S07**



80" Portable Screen (ELPSC08)  
**V12H002S08**

### Mountings

Ceiling Plate (ELPFC03)  
Required if using a ceiling pipe.  
**V12H003C03**



Ceiling Pipe (silver) 370mm  
(ELPFP04)  
**V12H003P04**



Ceiling Pipe (silver) 570mm  
(ELPFP05)  
**V12H003P05**

Ceiling Pipe (silver) 770mm  
(ELPFP06)  
**V12H003P06**

Ceiling Mount (ELPMB18)  
Connects to the projector and either directly to the ceiling, or to a ceiling pipe.  
**V12H003B18**



### Cables

VGA Computer Cable HD-15 to HD-15 1.8m (ELPKC02)  
**V12H005C02**



VGA Computer Cable HD-15 to HD-15 3.0m (ELPKC09)  
**V12H005C09**

VGA Computer Cable HD-15 to HD-15 20m (ELPKC10)  
**V12H005C10**

Component Video Cable (ELPKC19)  
**V12H005C19**



HD-TV Cable (ELPKC22)  
**V12H005C22**



## What's in the Box?

**Projector**  
with Slide Lens Shutter



**Remote Control**



**2 x AAA alkali batteries**  
for the remote control



**Power Cable**  
1.8m cable



**Computer Cable**  
Mini D-Sub 15-pin/mini D-Sub 15-pin, 1.8 m (6 ft.)  
Use when projecting images from a computer



**Read This First Booklet**  
Explains the contents of the box and which manuals the user should refer to.

Image TBC

**Setup Guide**  
Contains information on basic operations for preparing the projector before use (setup and connecting video equipment or a computer) and for starting projection.

Image TBC

**Document CD-ROM**  
Contains information on common and useful functions, configuration, troubleshooting, and maintenance.

Image TBC

**Safety Instructions**  
/ World Wide Warranty Terms

image TBC

# Specifications

<b>MODEL</b>	<b>EMP-S52</b>	
<b>Projection System</b>	RGB liquid crystal shutter projection system	
<b>Projection Method</b>	Front / Rear / Ceiling mount	
<b>Specifications of Main Parts</b>		
<b>LCD</b>	<b>Size</b>	0.55-inch without MLA
	<b>Driving Method</b>	Poly-silicon TFT active matrix
	<b>Pixel Number</b>	480,000 dots (800 x 600) x 3
	<b>Native Resolution</b>	SVGA
	<b>Aspect Ratio</b>	4:3
	<b>Pixel Arrangement</b>	Cross stripe
	<b>Refresh Rate</b>	50 Hz - 60 Hz
<b>Projection Lens</b>	<b>Type</b>	Digital zoom / Manual focus
	<b>F-Number</b>	1.44
	<b>Focal Length</b>	16.6 mm
	<b>Zoom Ratio</b>	Digital Zoom 1 – 1.35
	<b>Lens Cover</b>	Slide lens shutter
<b>Lamp</b>	<b>Type</b>	170 W UHE
	<b>Life</b>	3000 hours (High bright) / 4000 hours (Low bright)
<b>Screen Size (Projected Distance)</b>	30" to 300" [1.19 to 12.12 m] (Zoom:Tele) 30" to 300" [0.87 to 8.97 m] (Zoom:Wide) 60" screen 1.8 - 2.4 m	
<b>Brightness</b>	1800 ANSI lumens (Colour mode: Game, Zoom: Wide)	
<b>High Brightness Mode</b>	1440 ANSI lumens (Colour mode: Game, Zoom: Wide)	
<b>Low Brightness Mode</b>		
<b>Contrast</b>	400:1 (Colour mode : Game, High brightness mode)	
<b>Brightness Uniformity</b>	90%	
<b>Colour Reproduction</b>	Full-colour (16.77 million colours)	
<b>Video Quality</b>	Simple Interface-Progressive conversion	
<b>Sound Output</b>	1 W Monaural	
<b>Speaker</b>	35 • • x20 • • x 1	
<b>Function</b>	User logo, A/V mute, Freeze, E-Zoom, Help	
<b>Colour Mode</b>	PC: Photo, Presentation, Theatre, Game, sRGB, Blackboard, Text Video: Sports, Presentation, Theatre, Game, sRGB, Blackboard, Text	
<b>Remote Control Infrared Receiver Position / Distance / Directivity</b>	Front & rear , 6 m Right / Left : -30 to +30 degrees Upper / Lower : -15 to +15 degrees	
<b>Effective Scanning Frequency Range (Analogue)</b>	13.5 MHz to 162 MHz up to UXGA 60 Hz 15 kHz to 92 kHz	
<b>Pixel Clock</b>	Horizontal Vertical 50 Hz to 85 Hz	
<b>Adjustment Function Projector / Remote Control</b>	Brightness / Contrast / Tint / Saturation / Sharpness / Input signal / Sync / Tracking / Position / Colour temperature / Volume / etc. Front-centre 0 to 11 degrees Vertical : PC -30 to +30 degrees	
<b>Foot Adjuster Tilt Angle Keystone Correction</b>	Yes Yes	
<b>Source Search Auto Detection of RGB/Component Operation Panel Protected Function Password Protected Function (Security Function)</b>	Yes Yes	
<b>Analogue RGB I/O</b>	<b>Display Performance Input Signal</b>	Native 800 x 600 dots
	<b>Video Signal</b>	Separate signal Analogue (0.7 Vp-p, 75 ohm / Mac 0.714 Vp-p, 75 ohm)
	<b>Sync. Signal</b>	Separate (positive & negative, bi-polarity 2-5 Vp-p)/ Composite (positive & negative, bi-polarity 2-5 Vp-p)/ Sync-on-green (negative, 0.3 Vp-p)
	<b>Audio Signal</b>	500 mVrms / 47 k-ohm
<b>Input Terminal</b>	<b>Video</b>	D-sub 15pin x 1 Blue moulding
	<b>Audio</b>	RCA x 1 (White/Red)
<b>Output Signal</b>	<b>Video Signal</b>	Analogue (0.7 Vp-p, 75 ohm / Mac 0.714 Vp-p, 75 ohm)
	<b>Sync. Signal</b>	Separate (positive & negative, TTL) / Composite (positive & negative, TTL) / Sync. on green (negative 0.2-0.4 Vp-p)
<b>Output Terminal</b>	<b>Video</b>	D-sub 15pin x 1 Black moulding(Output signal : Computer * only)

<b>Video I/O</b>	<b>Display Performance Input Signal</b>	NTSC: 560 lines, PAL: 560 lines (Depend on observation of the multi-burst pattern)
	<b>Video Standard</b>	NTSC / NTSC4.43 / PAL / M-PAL / N-PAL / PAL60 / SECAM
	<b>Video Signal</b>	Composite Video (1.0 Vp-p / Sync.negative, 75 ohm) / S-Video (Luminous 0.714 Vp-p, Chrominous 0.286 Vp-p, 75 ohm) / Component Video (Analogue Y level 0.7 V, 75 ohm / Cr Cb level +/-0.35 V, 75 ohm / sync.negative 0.3 V or 3-state +/-0.3 V on Y) / RGB Video (0.7 Vp-p, 75 ohm / Mac 0.714 Vp-p, 75 ohm)
	<b>Audio Signal</b>	500 mVrms / 47 k-ohm
	<b>Composite Video:</b>	RCA (Yellow) x 1
	<b>S-Video:</b>	Mini DIN
	<b>Component Video:</b>	D-sub 15pin Blue moulding (in common with Analogue RGB connector)
	<b>RGB Video:</b>	D-sub 15pin Blue moulding (in common with Analogue RGB connector)
	<b>RCA x 1 (White/Red)</b>	(in common with Analogue RGB Audio terminal)
	<b>Audio</b>	
<b>Control I/O</b>	<b>USB I/O</b>	I/O Terminal I/O Speed Type B x1 (for K/B, control) Ver. 1.1
<b>Operating Temperature</b>	5 °C to 35 °C <41 °F to 95 °F> ( 20%-80% Humidity )	
<b>Operating Altitude</b>	0 m to 2286 m<0 ft to 7500 ft> ( over 1500 m / 4,921 ft :with High altitude mode)	
<b>Direct Power On</b>	Yes	
<b>Start-up Period</b>	about 5 seconds warm-up period: 30 seconds	
<b>Cool-down Period</b>	Instant off	
<b>Theft Proof Padlock &amp; Security Cable Hole Kensington Lock</b>	Yes	
<b>Power Supply Voltage</b>	100 - 240 V AC ±10%, 50/60 Hz	
<b>Power Consumption Lamp On Standby</b>	231 W 5.8 W	
<b>Dimensions Exclude Feet (D x W x H) Maximum Dimension (D x W x H) Weight</b>	245 x 327 x 92 mm 245 x 327 x 108 mm Approx. 6.0 € bs. / 2.7kg	
<b>Fan Noise High Brightness Mode Low Brightness Mode</b>	35 dB 28 dB	
<b>Supplied Accessories</b>	Power Cable 1.8m Computer Cable 1.8 m D-sub 15pin (Male) - D-sub 15pin(Male) Remote Control Battery Manganese dry cell x2 Password Protect Sticker User's Manual Set	
<b>Optional Accessories Spare Lamp Air Filter Set Soft Carrying Case 50" Portable Roll Screen 60" Portable Roll Screen 80" Portable Roll Screen 100 Type Screen Computer Cable,1.8m Computer Cable, 3.0m Computer Cable, 20.0m Component Video Cable, 3.0m HD-TV Cable, 3.0m Ceiling Mount Ceiling Plate Pipe 370mm Pipe 570mm Pipe 770mm</b>	ELPLP41 ELPAF13 ELPKS16B ELPSC06 ELPSC07 ELPSC08 ELPSC10 ELPKC02 ELPKC09 ELPKC10 ELPKC19 ELPKC22 ELPMB18 ELPFC03 ELPPF04 ELPPF05 ELPPF06	
<b>Warranty</b>	UK: 1 year next business day on-site repair or replace Republic of Ireland: 1 year next business day on-site repair or loan	
Errors and omissions excepted, all specifications are subject to change without notice.		



Wedgwood AV Ltd  
Audio visual supplier since 1996

# Wedgwood AV Ltd

Specialise in the supply of audio visual equipment to UK medical, MOD, education and businesses

Tel: 01754 769967 / 0800 018 9967

FREE Repeat Signage Standalone digital signage software for Windows with every order over £500+VAT purchased from Wedgwood AV Ltd in 2015

## Full product list FREE AV guides



LCD monitors

Wedgwood are giving away Repeat Signage Standalone Edition worth £145+VAT with any products with a total order value of over £500+VAT purchased during 2015 from Wedgwood AV Ltd. sales@wedgwood-group.com (Order value £1,000 +VAT will receive two software licences; £1,500+VAT three licences).

Repeat Signage helps you get your message across, to promote your products or services. You can display still and moving images, scrolling text messages, RSS feeds (such as the BBC weather or your local news), show webcam or web browser, add audio, PowerPoint scheduler, Flash clocks, and even display pictures which text. [See 2 minute video](#). [Trial download](#)

### Contact us - how to order

For a quotation or to place your official purchase order and receive your FREE Repeat Signage digital signage software please telephone 01754 769967 or fax 01754 768036 Email sales@wedgwood-group.com [Special offers](#)

Wedgwood AV Ltd - 01754 769967 [www.wedgwood-group.com](http://www.wedgwood-group.com)



Mount solutions



Touch screens



Digital signage



Medical monitors



Lecterns



Audio



Whiteboards



Projectors



Projector lamps



Projector lenses



Projector screens