



Installation guide
Software installation for netANALYZER devices
Installing driver and analyzer software
netANALYZER Scope DVD 04-2015

Hilscher Gesellschaft für Systemautomation mbH
www.hilscher.com

DOC150201IG01EN | Revision 01 | English | 2015-04 | Released | Public

Table of Contents

1	Introduction.....	3
1.1	About the user manual	3
1.1.1	List of revisions.....	3
1.1.2	Conventions in this manual	4
1.2	Content of the installatin DVD	5
1.2.1	Directory structure of the netANALYZER DVD.....	5
1.2.2	Directory structure of the netANALYZER Scope DVD	5
1.2.3	Documentations netANALYZER.....	6
1.2.4	What's new netANALYZER and netANALYZER Scope	7
1.3	Legal notes	8
1.3.1	Copyright	8
1.3.2	Important notes.....	8
1.3.3	Exclusion of liability	9
1.3.4	Warranty	9
1.3.5	Export regulations.....	10
1.3.6	Registered trademarks	10
2	Requirements.....	11
2.1	Software requirements	11
3	Getting started	12
3.1	Overview software installation	12
3.2	Overview software installation update	12
4	Installation netANALZER Scope	13
4.1	Auto boot menu	13
4.2	First-Time Installation	14
4.3	Update installation	18
4.4	Uninstalling	23
	Glossary	29
	Contacts	30

1 Introduction

1.1 About the user manual

This user manual contains descriptions for software installation for the ANALYZER PC card NANL-C500-RE and netANALYZER devices NANL-B500E-RE or NANL- B500G-RE.

The installation of the netANALYZER Scope software or driver required for the netANALYZER devices includes the following components:

- Ethernet Device Configuration Tool (only for NANL-B500G),
- **netANALYZER / netSCOPE Device Driver,**
- **netANALYZER Remote Access Window client** (only for NANL-B500G) and
- **netANALYZER Scope** software.

1.1.1 List of revisions

Index	Date	Chapter	Revisions
1	15-02-24	All	created

Table 1: List of revisions

1.1.2 Conventions in this manual

Notes, instructions and results of operating steps are marked as follows:

Notes



Important:

<important note you must follow to avoid malfunction>



Note:

<general note>



<note where to find further information>

Instructions

1. Operation purpose
2. Operation purpose
 - Instruction

Results

- ↻ Intermediate result
- ⇒ Final result

Safety messages

The labeling of safety messages is explained in the chapter Safety.

1.2 Content of the installatin DVD

The netANALYZER installation DVD for the analyzer card NANL-C500-RE and for the analyzer device NANL-B500E-RE or NANL-B500G-RE contains any driver and software components required.

Contents of the netANALYZER DVD

- Setup netANALYZER / netSCOPE Device Driver for 32-bit and für 64-bit
- Firmware update file for analyzer device NANL-B500G-RE
- Documentation (about hardware, driver and software installation)
- Examples for the netANALYZER Application Programming Interface (API)

Content of the netANALYZER Scope DVD

- Setup for netANALYZER Scope
- Documentation (about License manager and netANALYZER Scope)
- Examples

1.2.1 Directory structure of the netANALYZER DVD

Directory name	Description
Root directory	Autostart menu (netAnalyzer.exe)
Documentation	Documentation in the Acrobat® Reader Format (PDF), Adobe Flash Player installation program
Driver	netANALYZER / netSCOPE Device Driver for Windows® 7 or Windows® 8, Remote Access Client (only for analyzer device NANL-B500G-RE)
Examples	2 programming examples for the Application Programming Interface (API) for the analyzer card NANL-C500-RE and for the analyzer device NANL-B500E-RE or NANL-B500G-RE
fsccommand	Help files for the installation program.
NANL-B500G-RE firmware update	Firmware update file for analyzer device NANL-B500G-RE
Plugin	Wireshark netANALYZER plugin files
Setup	Installer to install the single components (<i>setup.exe</i>)
Software	Ethernet Device Configuration (<i>EnDevConfigTool.msi</i>)
Update NXANL 500-RE Revision 3	netANALYZER hardware update for the NXANL 500-RE-hardware-revisions 2 and 3

Table 2: Directory structure of the netANALYZER DVD

1.2.2 Directory structure of the netANALYZER Scope DVD

Directory name	Description
Root directory	Autostart menu (<i>netAnalyzer-Scope.exe</i>)
Documentation	Documentation in the Acrobat® Reader Format (PDF), Adobe Flash Player installation program
Examples	Applicatin examples for netANALYZER Scope
fsccommand	Help files for the installation program.
Setup	Installer to install the single components (<i>setup.exe</i>)

Table 3: Directory structure of the netANALYZER DVD

1.2.3 Documentations netANALYZER

The following documentation overview gives information, for which items you can find further information in which manual.

1 - Available on the netANALYZER DVD

2 - Available on the netANALYZER Scope DVD

Manual	Contents	Document name	DocumentID	DVD
User Manual netANALYZER devices	Installation, operation and hardware description	netANALYZER UM XX EN.pdf	DOC091110UMXXEN	1, 2
User manual, netANALYZER Scope licensing	Overview	netANALYZER Scope licensing UM XX EN.pdf	DOC091110UMXXEN	2
Installation guide, Software installation for netANALYZER devices (this document)	Installing driver and analyzer software	netANALYZER software installation IG 01 EN.pdf	DOC150201IGXXEN	1, 2
Driver manual netANALYZER API, Windows XP/Vista/7/8, V1.x	Description of the netANALYZER API	netANALYZER API Windows DRV XX EN.pdf	DOC091113DRVXXEN	1
Operating instructions manual, Ethernet Device Configuration	Addresssetting for Ethernet capable Hilscher devices	Ethernet Device Configuration OI XX EN.pdf	DOC050402OIXXEN	1, 2
Operating instructions manual, netANALYZER Scope	Installation and operation for Windows 7/8, V2.2.xx	netANALYZER Scope OI XX EN.pdf	DOC131002OIXXEN	2
Operating instructions manual, Hilscher license manager	Description of software licensing, V1.0.x.x	License manager OI XX EN.pdf	DOC131201OIXXEN	2
Revision list What's new netANALYZER	netANALYZER DVD	What's new netANALYZER DVD RL XX EN.pdf	DOC120306RLXXEN	1
Revision list What's new netANALYZER Scope	netANALYZER Scope DVD	What's new netANALYZER Scope DVD RL XX EN.pdf	DOC150202RLXXEN	2

Table 4: Documentations netANALYZER

These documents are available on the DVD delivered with the device underneath the directory **Documentation**, in Adobe Acrobat® Reader format (PDF) or you can download the latest edition of a manual from the website www.hilscher.com under **Support > Downloads > Manuals** or under **Products** directly with the information about your product.

1.2.4 What's new netANALYZER and netANALYZER Scope



All current version information for hardware and software described in this manual are provided in the folder *\Documentation\ What's New netANALYZER DVD RL XX EN.pdf* on the netANALYZER DVD.

All current version information for the netANALYZER Scope software are provided in the folder *\Documentation\ What's New netANALYZER Scope DVD RL XX EN.pdf* on the netANALYZER Scope DVD.

1.3 Legal notes

1.3.1 Copyright

© Hilscher 2015, Hilscher Gesellschaft für Systemautomation mbH

All rights reserved.

The images, photographs and texts in the accompanying material (user manual, accompanying texts, documentation, etc.) are protected by German and international copyright law as well as international trade and protection provisions. You are not authorized to duplicate these in whole or in part using technical or mechanical methods (printing, photocopying or other methods), to manipulate or transfer using electronic systems without prior written consent. You are not permitted to make changes to copyright notices, markings, trademarks or ownership declarations. The included diagrams do not take the patent situation into account. The company names and product descriptions included in this document may be trademarks or brands of the respective owners and may be trademarked or patented. Any form of further use requires the explicit consent of the respective rights owner.

1.3.2 Important notes

The user manual, accompanying texts and the documentation were created for the use of the products by qualified experts, however, errors cannot be ruled out. For this reason, no guarantee can be made and neither juristic responsibility for erroneous information nor any liability can be assumed. Descriptions, accompanying texts and documentation included in the user manual do not present a guarantee nor any information about proper use as stipulated in the contract or a warranted feature. It cannot be ruled out that the user manual, the accompanying texts and the documentation do not correspond exactly to the described features, standards or other data of the delivered product. No warranty or guarantee regarding the correctness or accuracy of the information is assumed.

We reserve the right to change our products and their specification as well as related user manuals, accompanying texts and documentation at all times and without advance notice, without obligation to report the change. Changes will be included in future manuals and do not constitute any obligations. There is no entitlement to revisions of delivered documents. The manual delivered with the product applies.

Hilscher Gesellschaft für Systemautomation mbH is not liable under any circumstances for direct, indirect, incidental or follow-on damage or loss of earnings resulting from the use of the information contained in this publication.

1.3.3 Exclusion of liability

The software was produced and tested with utmost care by Hilscher Gesellschaft für Systemautomation mbH and is made available as is. No warranty can be assumed for the performance and flawlessness of the software for all usage conditions and cases and for the results produced when utilized by the user. Liability for any damages that may result from the use of the hardware or software or related documents, is limited to cases of intent or grossly negligent violation of significant contractual obligations. Indemnity claims for the violation of significant contractual obligations are limited to damages that are foreseeable and typical for this type of contract.

It is strictly prohibited to use the software in the following areas:

- for military purposes or in weapon systems;
- for the design, construction, maintenance or operation of nuclear facilities;
- in air traffic control systems, air traffic or air traffic communication systems;
- in life support systems;
- in systems in which failures in the software could lead to personal injury or injuries leading to death.

We inform you that the software was not developed for use in dangerous environments requiring fail-proof control mechanisms. Use of the software in such an environment occurs at your own risk. No liability is assumed for damages or losses due to unauthorized use.

1.3.4 Warranty

Although the hardware and software was developed with utmost care and tested intensively, Hilscher Gesellschaft für Systemautomation mbH does not guarantee its suitability for any purpose not confirmed in writing. It cannot be guaranteed that the hardware and software will meet your requirements, that the use of the software operates without interruption and that the software is free of errors. No guarantee is made regarding infringements, violations of patents, rights of ownership or the freedom from interference by third parties. No additional guarantees or assurances are made regarding marketability, freedom of defect of title, integration or usability for certain purposes unless they are required in accordance with the law and cannot be limited. Warranty claims are limited to the right to claim rectification.

1.3.5 Export regulations

The delivered product (including the technical data) is subject to export or import laws as well as the associated regulations of different countries, in particular those of Germany and the USA. The software may not be exported to countries where this is prohibited by the United States Export Administration Act and its additional provisions. You are obligated to comply with the regulations at your personal responsibility. We wish to inform you that you may require permission from state authorities to export, re-export or import the product.

1.3.6 Registered trademarks

Windows® 7 and Windows® 8 are registered trademarks of Microsoft Corporation.

Wireshark® and the "fin" logo are a registered trademark of Gerald Combs.

Adobe-Acrobat® is a registered trademark of the Adobe Systems Incorporated.

All other mentioned trademarks are property of their respective legal owners.

2 Requirements

2.1 Software requirements

1. Software requirements for netANALYZER devices

- The netANALYZER Scope software V 2.0.x.x must be installed. This includes the analyzer driver and the analyzer firmware “Ethernet-Analyzer”.
- In order to show the displayed data, a network monitoring program such as Wireshark must be installed that supports the WinPcap format.

Only for analyzer device NANL-B500G-RE:

- The **Remote Access Client** must be installed.
- The program Ethernet Device Configuration must be installed.

2. Requirements for netANALYZER Scope

Operating system:

- Windows® 7, (32-bit and 64-bit version)
- Windows® 8, (32-bit and 64-bit version)

Additional software requirements

- Microsoft .NET Framework 4.0
- Microsoft Visual C++ 2008 Redistributable Package
- Microsoft Visual C++ 2010 Redistributable Package
- Microsoft DirectX 9.0c
- netANALYZER Driver

These additionally required software components are included within the setup of netANALYZER Scope and are automatically installed, if necessary.

3 Getting started

3.1 Overview software installation

No	Step	Description	Detailed information, see chapter / section
1	Enter DVD	- Insert the netANALYZER Scope DVD.	First-Time Installation [▶ page 14]
2	Autostart menu	- Select Install Scope Software in the startup menu.	
3	Select settings for components	- For the components netANALYZER / netScope device driver and for the netANALYZER Scope software to be installed select Install in the installation dialog. Note! For the analyzer device NANL- B500G-RE the netANALYZER Remote Access Windows client and the program Ethernet Device Configuration must be installed. Furthermore you need the program Hilscher License Manager for the license request for licensing your netANALYZER Scope software.	
4	Accept license agreement	- Check I accept the terms in the License agreement.	
5	Perform installation	- Click Apply . - Answer query with OK and close all applications. - Answer Windows safety query by Yes . - The installation runs. - Click Finish .	

Table 5: Overview netANALYZER Scope software installation

Also see about this

📖 Software requirements [▶ 11]

3.2 Overview software installation update

No	Step	Description	Detailed Information, see the Documentation / Chapter / Section
1.	Enter DVD	- Insert the netANALYZER Scope DVD.	Update installation [▶ page 18]
2	Autostart menu	- In the autostart menu select Install Scope Software .	
3	Select settings for components	- For the components to be updated select Update in the installation dialog. Note! For the analyzer device NANL- B500G-RE the netANALYZER Remote Access Windows client and the program Ethernet Device Configuration must be installed.	
4	Accept license agreement	- Check I accept the terms in the License Agreement.	
5	Perform update	- Click Apply . - Answer query with OK and close all applications. - Answer Windows safety query by Yes . - The update is performed. - Click Finish .	

Table 6: Overview software and driver

4 Installation netANALZER Scope

4.1 Auto boot menu

For the software installation for your netANALYZER device the netANALYZER Scope DVD contains the netANALYZER / netSCOPE Device Driver, the netANALYZER Scope software, documentation and programming examples.

Auto boot menu of the netANALYZER Scope DVD

In the auto boot menu you can select:

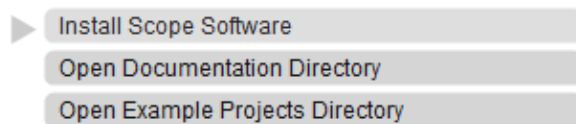


Figure 1: Auto boot menu of the netANALYZER Scope installation DVD

Driver and software

If you select in the auto boot menu **Install Scope Software**, in the next dialog you can select which of the following software components you want to install:

- Ethernet Device Configuration Tool,
- netANALYZER / netSCOPE Device Driver,
- netANALYZER Remote Access Window Client or
- netANALYZER Scope.

Documentation and examples

Via the auto boot menu you can access the storage directories with the documentation or the sample projects on the DVD.

4.2 First-Time Installation

This section describes how to install the software and the driver for netANALZER Scope when netANALZER Scope is not already installed on your PC.

Step 1: Starting boot start menu and install dialog

- Close all programs!
- Enter the netANALZER Scope installation DVD in the local DVD ROM drive.
- The start screen of the auto boot menu is displayed with the following options:

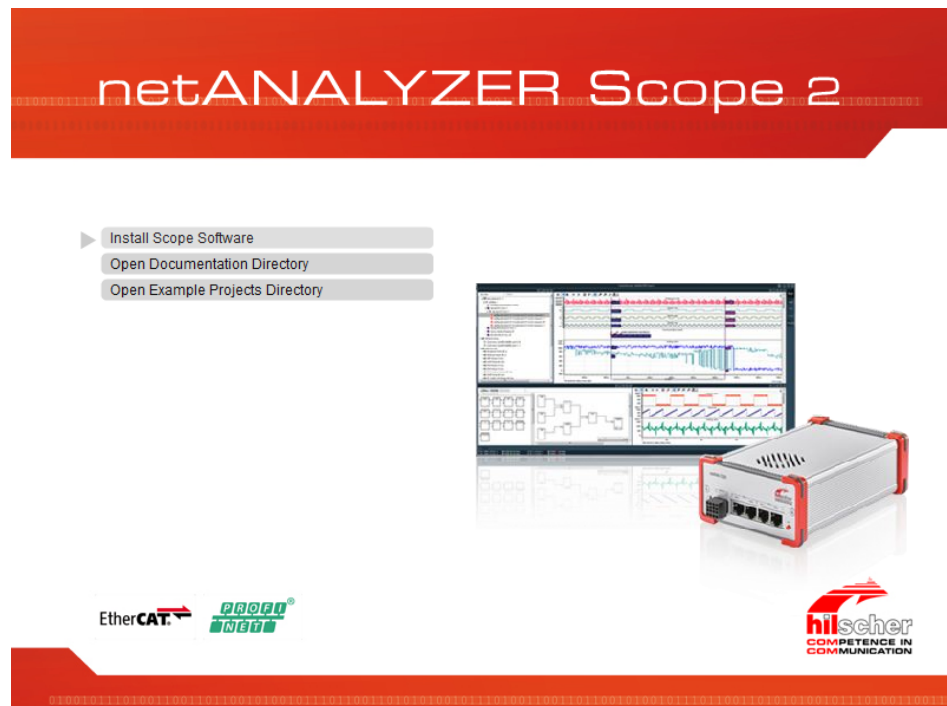


Figure 2: Auto boot menu netANALZER Scope installation DVD

- Select **Install Scope Software**.
- The **netANALZER Scope** installation dialog appears.

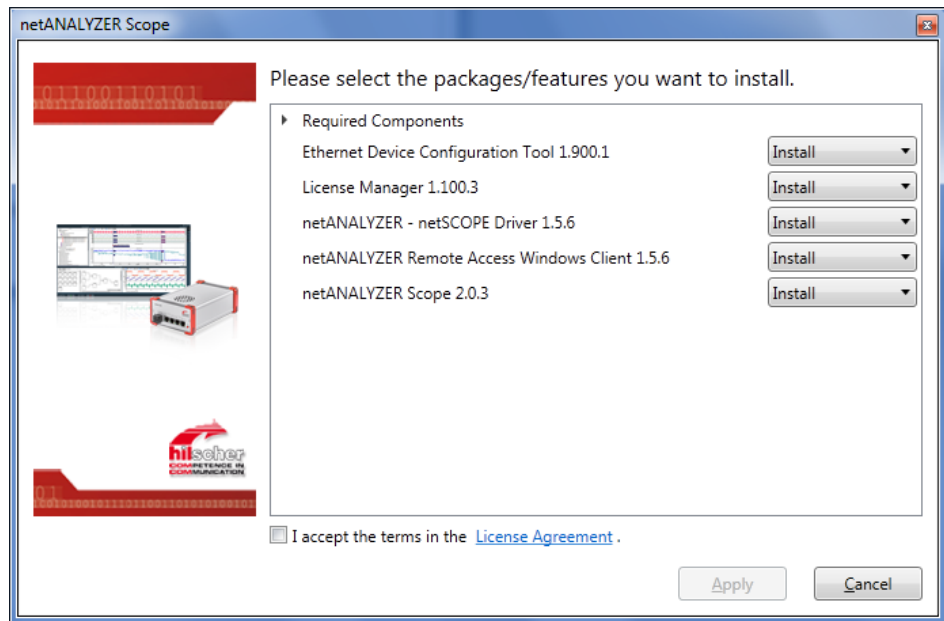


Figure 3: Installation dialog netANALYZER Scope - first-time installation

- For each installation component, the version available on the DVD is indicated.
- For those components not yet installed on the PC **Install** appears.

Step 2: Select settings for components

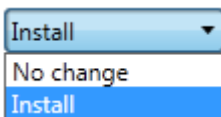


Note:

For the analyzer device NANL- B500G-RE the **netANALYZER Remote Access Windows client** and the program **Ethernet Device Configuration** must be installed.

In the installation dialog for each component (package/feature)

- Ethernet Device Configuration Tool,
- License manger,
- netANALYZER / netSCOPE Device Driver,
- netANALYZER Remote Access Window client,
- netANALYZER Scope,



you must specify if you want to install the component for the first time on your PC. You can choose **No change** or **Install**.

- Choose **No change** if you do not want to install a component.
- Select **Install** if you want to install a component.

Step 3: Complete license agreement

- Accept terms of agreement: You must check **I accept the terms of the License Agreement**.

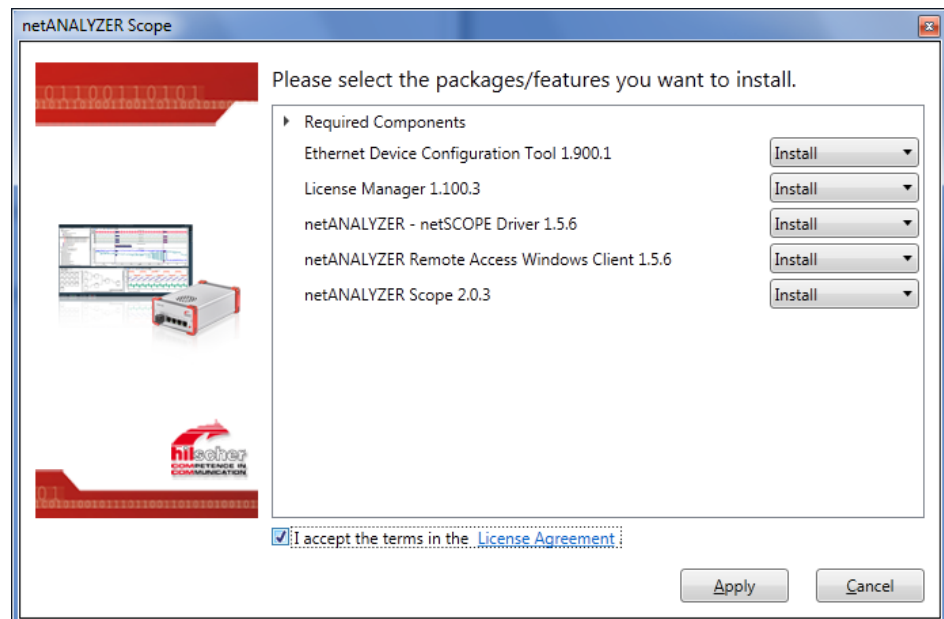


Figure 4: Installation dialog netANALYZER Scope - Accepting license agreement

- Via the hyperlink [License Agreement](#) you can view the Hilscher software license agreement.

Step 4: Perform installation

- Start with **Apply** the installation of the selected components (packages / features).
- The netANALYZER Scope query, **Please close all other applications!** appears.

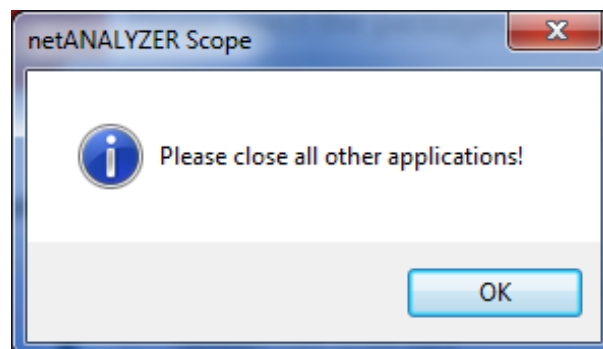


Figure 5: netANALYZER Scope query, 'Please close all other applications!'

- Close all other applications.
- The Windows safety query **User Account Control: Do you want to allow the following program to make changes to this computer?** appears.
- Click **Yes**.
- Your selected components are installed.

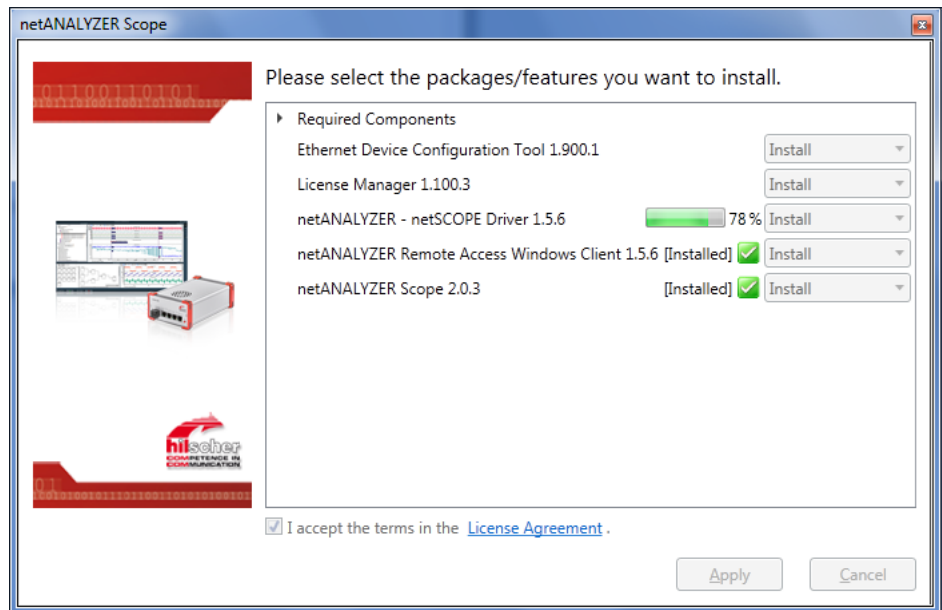


Figure 6: Installation dialog netANALYZER Scope - the installation of the selected components is running

➤ The installation is complete.

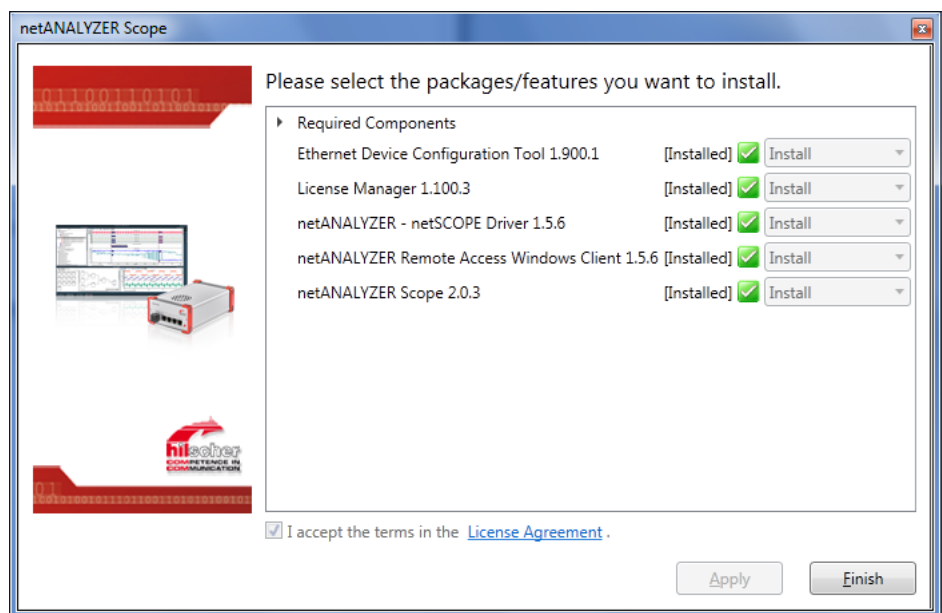


Figure 7: Installation dialog netANALYZER Scope - Installation of the selected components completed

➤ Click **Finish**.

4.3 Update installation

This section describes how to update the installation for netANALZER Scope components that are installed in a previous version on your PC or how to install single components later.

Step 1: Starting boot start menu and install dialog

- Close all programs!
- Enter the netANALZER Scope installation DVD in the local DVD ROM drive.
- The start screen of the auto boot menu is displayed with the following options:

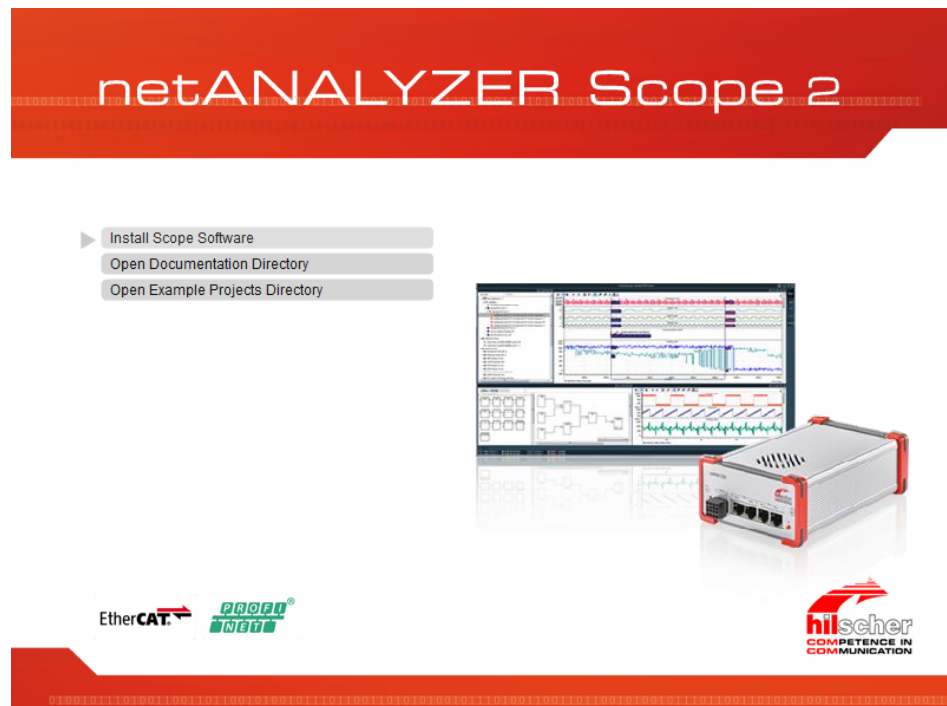


Figure 8: Auto boot menu netANALZER Scope installation DVD

- Select **Install Scope Software**.
- The **netANALZER Scope** installation dialog appears.

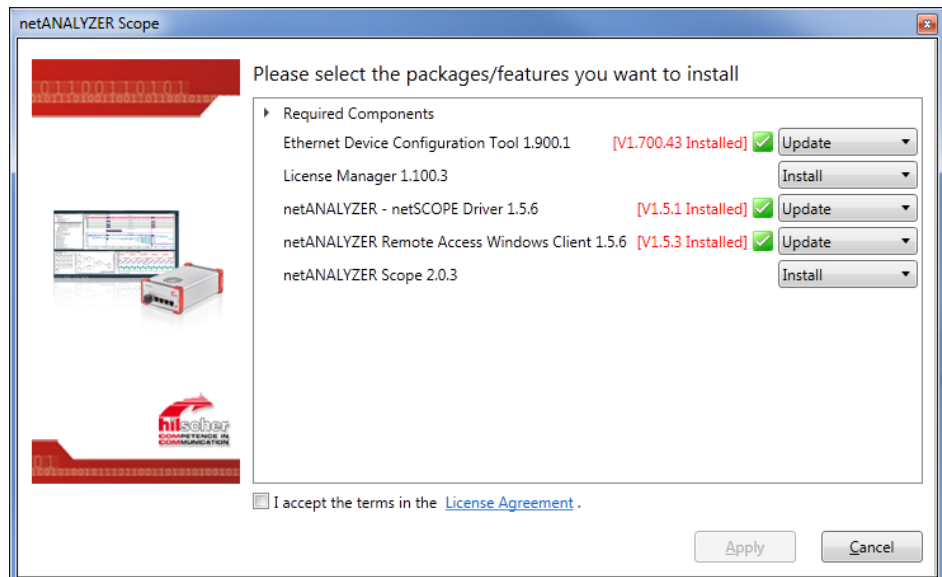


Figure 9: Installation dialog netANALZER Scope - Installation update (example)

- ⇒ For each installation component, the version available on the DVD is indicated.
- ⇒ For components that are installed in the current version on the PC, **No change** appears and in green text the version is indicated.
License Manager 1.100.3 [V1.100.3 Installed] ✓ No change ▾
- ⇒ For components installed in a previous version on your PC **Update** appears and in red text is indicated which version is installed on the PC.
- ⇒ For those components not yet installed on the PC **Install** appears.

Step 2: Select settings for components

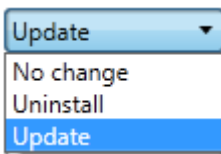


Note:

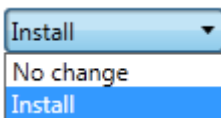
For the analyzer device NANL- B500G-RE the **netANALYZER Remote Access Windows client** and the program **Ethernet Device Configuration** must be installed.

In the installation dialog for each component (package/feature)

- Ethernet Device Configuration Tool,
- License manger,
- netANALYZER / netSCOPE Device Driver,
- netANALYZER Remote Access Window client,
- netANALYZER Scope,



you must specify whether you want to make any change in the installation or if you want to uninstall software components (or update if necessary). You can select **No change** or **Uninstall** (and optionally **Update**).



OR for components not yet installed, you can select **No change** or **Install**.

- Select **No change** if you do not want to install, update or uninstall a component.
- Select **Uninstall** if you want to uninstall a component. For more information, refer to the section *Uninstalling* [▶ page 23].
- If necessary, select **Update** if you want to update a component.
- Select **Install** if you want to install a component for the first time.

Step 3: Complete license agreement

- Accept terms of agreement: You must check **I accept the terms of the License Agreement**.

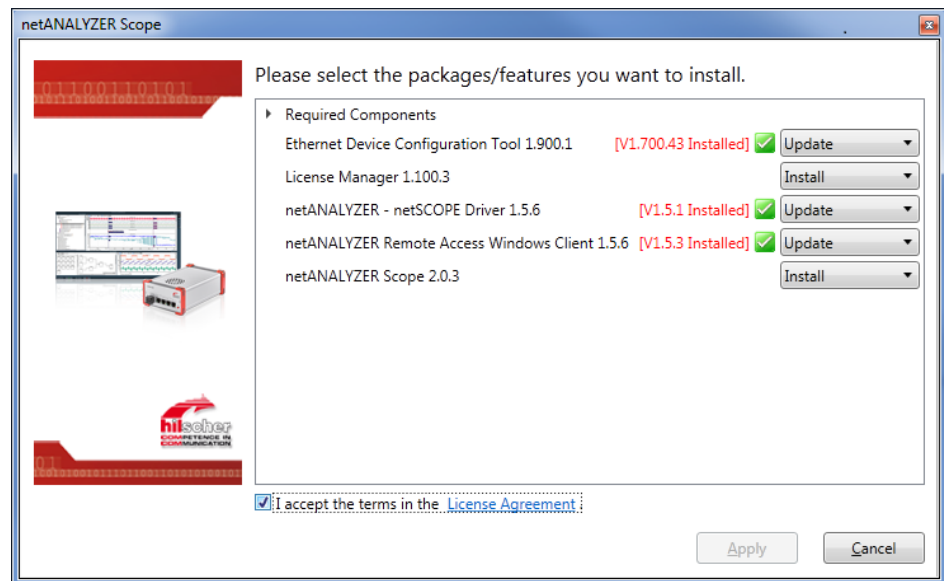


Figure 10: Installation dialog netANALZER Scope - Accepting license agreement

- Via the hyperlink [License Agreement](#) you can view the Hilscher software license agreement.

Step 4: Perform the installation or upgrade

- Start with **Apply** the installation or update of the selected components (packages / features).
- The netANALZER Scope query, **Please close all other applications!** appears.

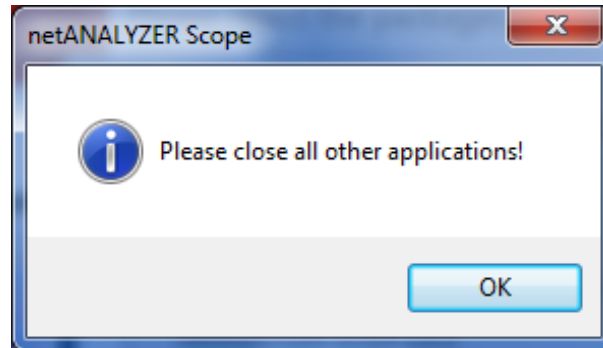


Figure 11: netANALZER Scope query, 'Please close all other applications!' appears.

- Close all other applications.
- The Windows safety query **User Account Control: Do you want to allow the following program to make changes to this computer?** appears.
- Click **Yes**.
- Your selected components are installed/updated.
- The installation/update is complete.

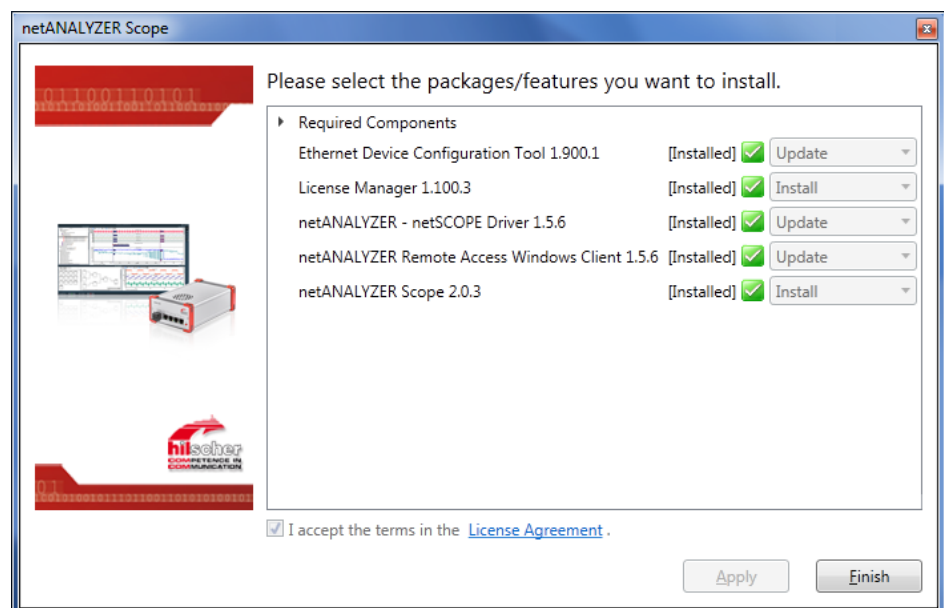


Figure 12: Installation dialog netANALZER Scope - Installation/update of the selected components completed

- Click **Finish**.

4.4 Uninstalling

This section describes how to permanently remove the netANALYZER Scope software and the driver from your PC.

**Note:**

If you want to upgrade your netANALYZER Scope software or the driver, follow the steps as described in the section *Update installation* [▶ page 18].

Step 1: Starting boot start menu and install dialog

- Close all programs!
- Enter the netANALYZER Scope installation DVD in the local DVD ROM drive.
- ⇒ The start screen of the auto boot menu is displayed with the following options:

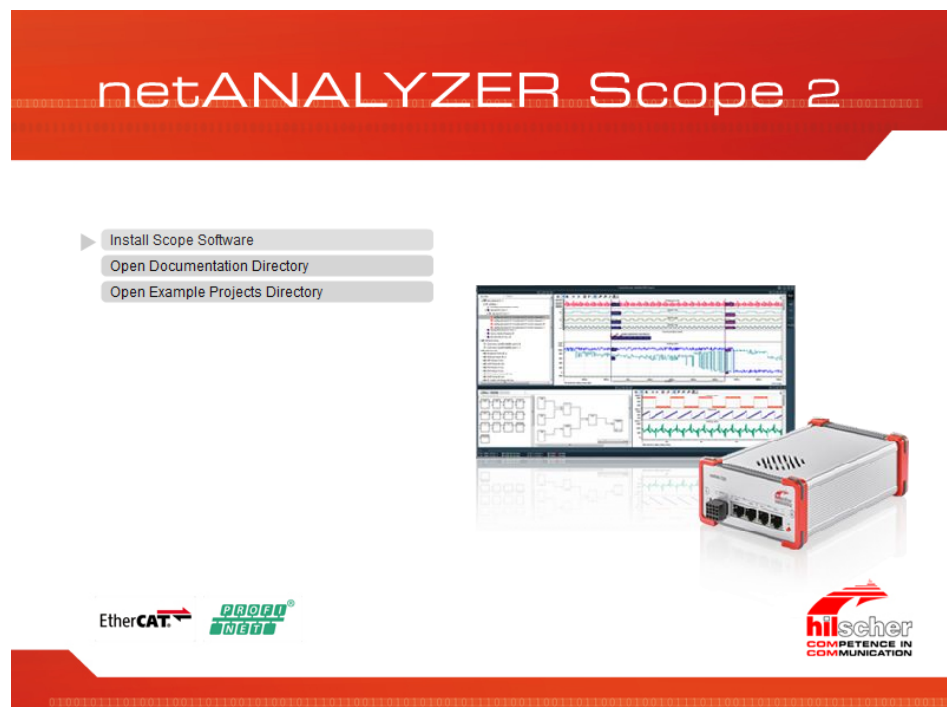


Figure 13: Auto boot menu netANALYZER Scope installation DVD

- Select **Install Scope Software**.
- ⇒ The **netANALYZER Scope** installation dialog appears.

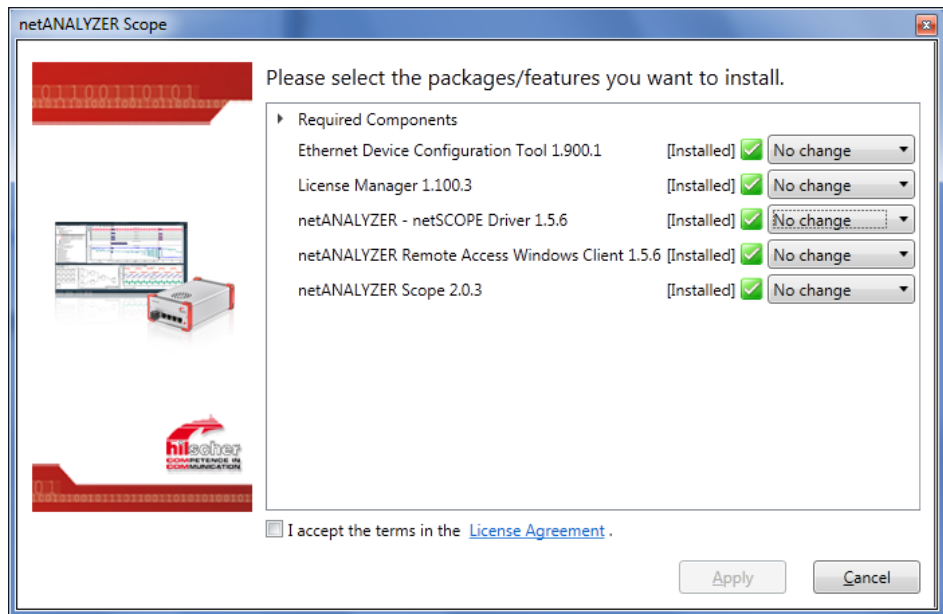


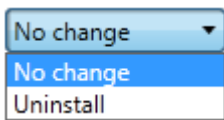
Figure 14: Installation dialog netANALYZER Scope - Example of an existing installation that shall be removed

- For each installation component, the version available on the DVD and optionally the version installed on the PC is indicated.

Step 2: Select settings for components

In the installation dialog for each component (package / feature)

- Ethernet Device Configuration Tool,
- netANALYZER / netSCOPE Device Driver,
- netANALYZER Remote Access Window client,
- netANALYZER Scope,



that you completely want to remove from your PC, you must specify if you want to uninstall this component. You can select **No change** or **Uninstall** (and optionally **Update not shown in picture**).

- Select **No change** if you do not want to update or uninstall a component.
- Select **Uninstall** if you want to uninstall a component.

Step 3: Complete license agreement

- Accept terms of agreement: You must check **I accept the terms of the License Agreement**.

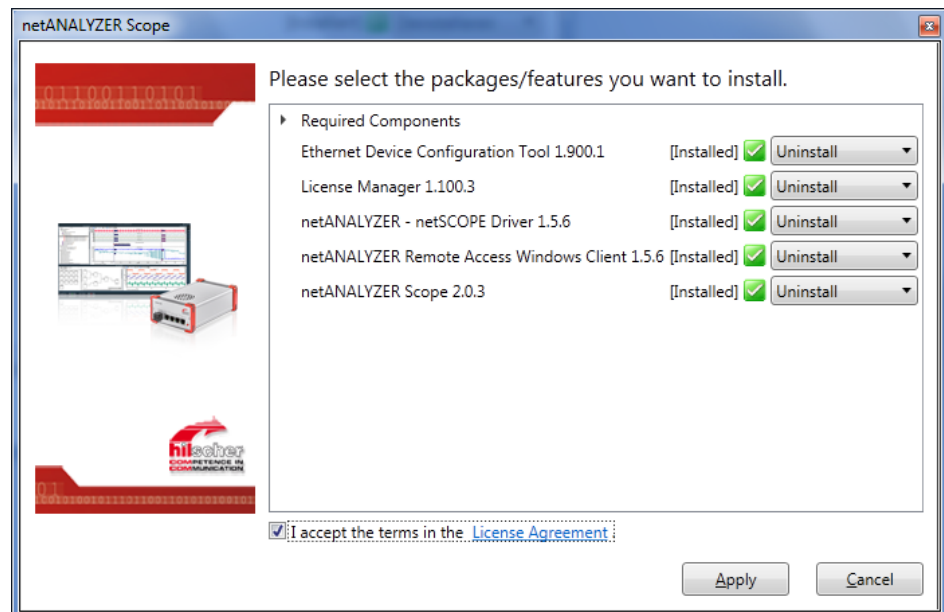


Figure 15: Installation dialog netANALYZER Scope - Accepting license agreement

- Via the hyperlink [License Agreement](#) you can view the Hilscher software license agreement.

Step 4: Uninstalling

- Start with **Apply** the uninstallation of the selected components (packages / features).
- The netANALYZER Scope query, **Please close all other applications!** appears.

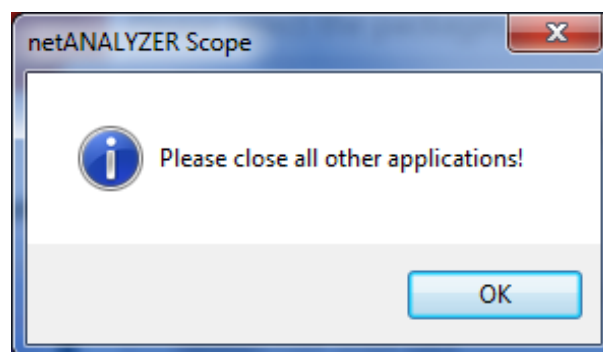


Figure 16: netANALYZER Scope query, 'Please close all other applications!' appears.

- Close all other applications.
- The Windows safety query **User Account Control: Do you want to allow the following program to make changes to this computer?** appears.
- Click **Yes**.
- The selected components are removed from your PC.

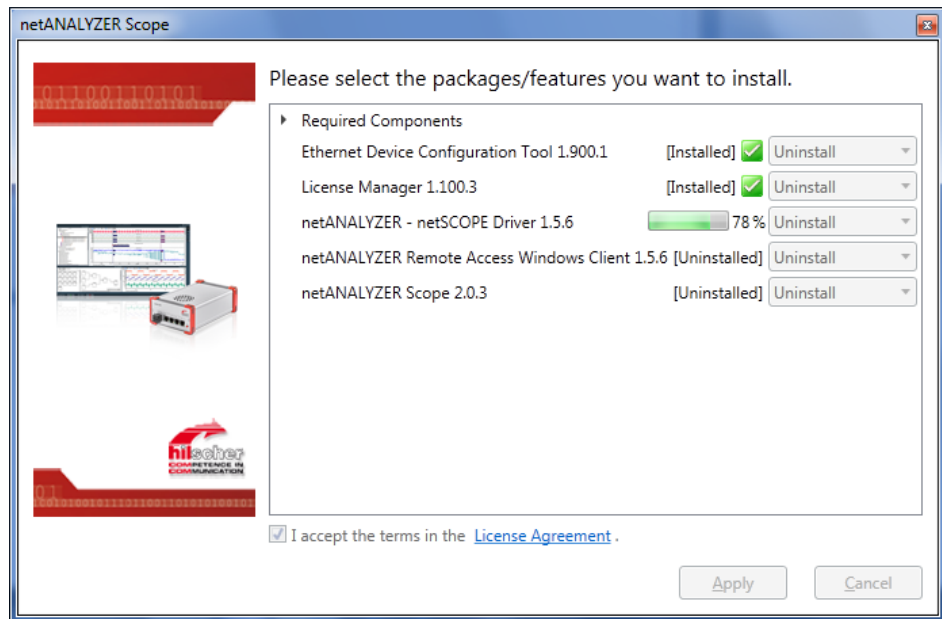


Figure 17: Installation dialog netANALZER Scope - the uninstallation of the selected components is running

➤ The uninstallation is complete.

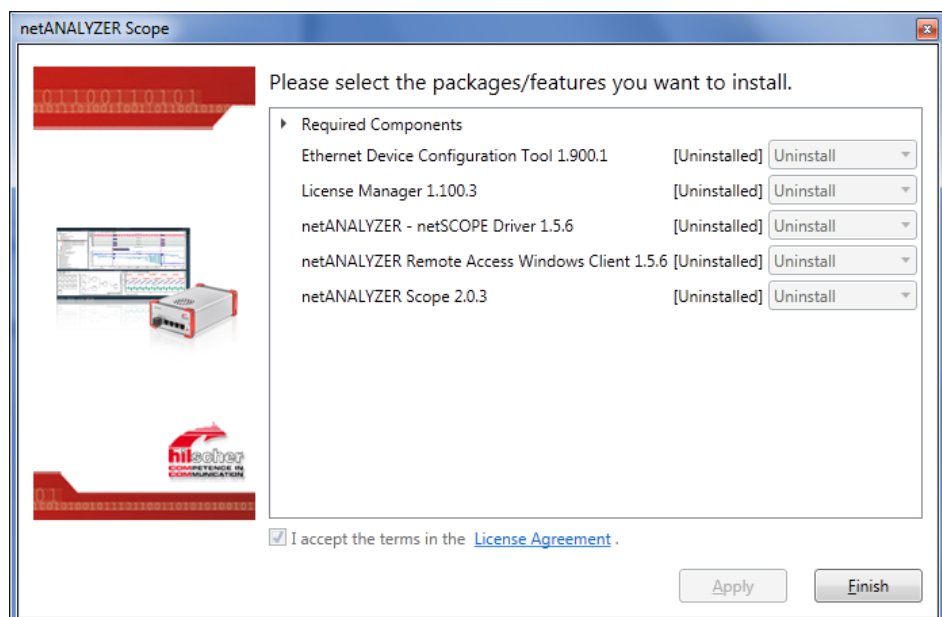


Figure 18: Installation dialog netANALZER Scope - Uninstallation of the selected components completed

➤ Click **Finish**.

List of figures

Figure 1:	Auto boot menu of the netANALYZER Scope installation DVD	13
Figure 2:	Auto boot menu netANALYZER Scope installation DVD	14
Figure 3:	Installation dialog netANALYZER Scope - first-time installation.....	15
Figure 4:	Installation dialog netANALYZER Scope - Accepting license agreement	16
Figure 5:	netANALYZER Scope query, 'Please close all other applications!'	16
Figure 6:	Installation dialog netANALYZER Scope - the installation of the selected components is running	17
Figure 7:	Installation dialog netANALYZER Scope - Installation of the selected components completed	17
Figure 8:	Auto boot menu netANALYZER Scope installation DVD	18
Figure 9:	Installation dialog netANALYZER Scope - Installation update (example)	19
Figure 10:	Installation dialog netANALYZER Scope - Accepting license agreement	21
Figure 11:	netANALYZER Scope query, 'Please close all other applications!' appears.....	22
Figure 12:	Installation dialog netANALYZER Scope - Installation/update of the selected components completed	22
Figure 13:	Auto boot menu netANALYZER Scope installation DVD	23
Figure 14:	Installation dialog netANALYZER Scope - Example of an existing installation that shall be removed	24
Figure 15:	Installation dialog netANALYZER Scope - Accepting license agreement	25
Figure 16:	netANALYZER Scope query, 'Please close all other applications!' appears.....	25
Figure 17:	Installation dialog netANALYZER Scope - the uninstallation of the selected components is running	26
Figure 18:	Installation dialog netANALYZER Scope - Uninstallation of the selected components completed	26

List of tables

Table 1:	List of revisions.....	3
Table 2:	Directory structure of the netANALYZER DVD	5
Table 3:	Directory structure of the netANALYZER DVD	5
Table 4:	Documentations netANALYZER	6
Table 5:	Overview netANALYZER Scope software installation.....	12
Table 6:	Overview software and driver	12

Glossary

Ethernet Device Configuration	Hilscher Software tool used eg for the netANALYZER device NANL-B500G-RE to configure the IP address and which is used for the modes "static IP address" or "DHCP Client"
NANL-B500E-RE	netANALYZER portable device with ExpressCard interface for real-time ethernet and all 10/100BASE-T Ethernet networks
NANL-B500G-RE	netANALYZER portable device with Gigabit Ethernet PC interface for real-time Ethernet and all 10/100BASE-T Ethernet networks
NANL-C500-RE	netANALYZER PC card with PCI interface for real-time Ethernet and all 100BASE-T Ethernet networks
netANALYZER	system for recording and analyzing data traffic in Ethernet networks which has been developed and is manufactured by Hilscher, consisting of a special hardware (netANALYZER card or portable device) and software
netANALYZER Scope	intelligent high level analysis software for recording and analyzing EtherCAT and PROFINET networks together with the netANALYZER hardware (card or portable device)
WinPcap	library WinPcap; http://www.winpcap.org/
Wireshark	Network monitoring program Wireshark; http://www.wireshark.org

Contacts

HEADQUARTERS

Germany

Hilscher Gesellschaft für
Systemautomation mbH
Rheinstrasse 15
D-65795 Hattersheim
Phone: +49 (0) 6190 9907-0
Fax: +49 (0) 6190 9907-50
E-Mail: info@hilscher.com

Support

Phone: +49 (0) 6190 9907-99
E-Mail: de.support@hilscher.com

SUBSIDIARIES

China

Hilscher Systemautomation (Shanghai) Co. Ltd.
200010 Shanghai
Phone: +86 (0) 21-6355-5161
E-Mail: info@hilscher.cn

Support

Phone: +86 (0) 21-6355-5161
E-Mail: cn.support@hilscher.com

France

Hilscher France S.a.r.l.
69500 Bron
Phone: +33 (0) 4 72 37 98 40
E-Mail: info@hilscher.fr

Support

Phone: +33 (0) 4 72 37 98 40
E-Mail: fr.support@hilscher.com

India

Hilscher India Pvt. Ltd.
Pune, Delhi, Mumbai
Phone: +91 8888 750 777
E-Mail: info@hilscher.in

Italy

Hilscher Italia S.r.l.
20090 Vimodrone (MI)
Phone: +39 02 25007068
E-Mail: info@hilscher.it

Support

Phone: +39 02 25007068
E-Mail: it.support@hilscher.com

Japan

Hilscher Japan KK
Tokyo, 160-0022
Phone: +81 (0) 3-5362-0521
E-Mail: info@hilscher.jp

Support

Phone: +81 (0) 3-5362-0521
E-Mail: jp.support@hilscher.com

Korea

Hilscher Korea Inc.
Seongnam, Gyeonggi, 463-400
Phone: +82 (0) 31-789-3715
E-Mail: info@hilscher.kr

Switzerland

Hilscher Swiss GmbH
4500 Solothurn
Phone: +41 (0) 32 623 6633
E-Mail: info@hilscher.ch

Support

Phone: +49 (0) 6190 9907-99
E-Mail: ch.support@hilscher.com

USA

Hilscher North America, Inc.
Lisle, IL 60532
Phone: +1 630-505-5301
E-Mail: info@hilscher.us

Support

Phone: +1 630-505-5301
E-Mail: us.support@hilscher.com