

# Table of Contents

Chapter 1. Introduction .....	1
1.1 Before Installation.....	1
1.2 System Requirements .....	1
Chapter 2. Cam Viewer Installation .....	2
Chapter 3. Import Surveillance Product .....	15
Appendix A: Feature Listing for Cam Viewer.....	18
Appendix B: Ordering Information for Cam Viewer Pro.....	20

# Chapter 1. Introduction

Thank you for purchasing the IP surveillance application program. The Cam Viewer is a multi-camera video surveillance application that enables you to set up a comprehensive and effective surveillance system quickly and easily.

## 1.1 Before Installation

Before installation, please be sure to read this quick installation guide and user's manual (CD) carefully to complete machine installation.

This QIG includes the following chapter:

- Chapter2. Cam Viewer Installation
- Chapter3. Import Surveillance Product

## 1.2 System Requirements

The system consumes huge of computation power to decode and record multiple video streams from IP cameras. Therefore, bear in mind that much faster CPU speed and higher system memory will be very useful to handle and process multi-channel video streams. Here is a minimum recommendation of system requirement as below:

Total FPS at VGA (30FPS for Each Camera)	~600	600~480	480~240	240~120	120~
CPU	Intel Core 2 Duo QX6800	Intel Core 2 Duo E6600	Intel Pentium D 930	Intel P4 3.0 GHz	Intel P4 2.8 GHz
RAM	4 GB	2 GB	2 GB	1 GB	1 GB
Chipset of Motherboard	Intel 946/965 chip or above, Intel Chipset recommended				
VGA Card	ATI Radeon 9200, nVIDIA GeForce FX-5200, Intel 945/965 or above (ATI recommended)				
Ethernet	100 Base-TX or above, Gigabit LAN recommended				
Hard Disk	160 GB or above				
O.S.	Windows 2000 / XP / 2003 / Vista				

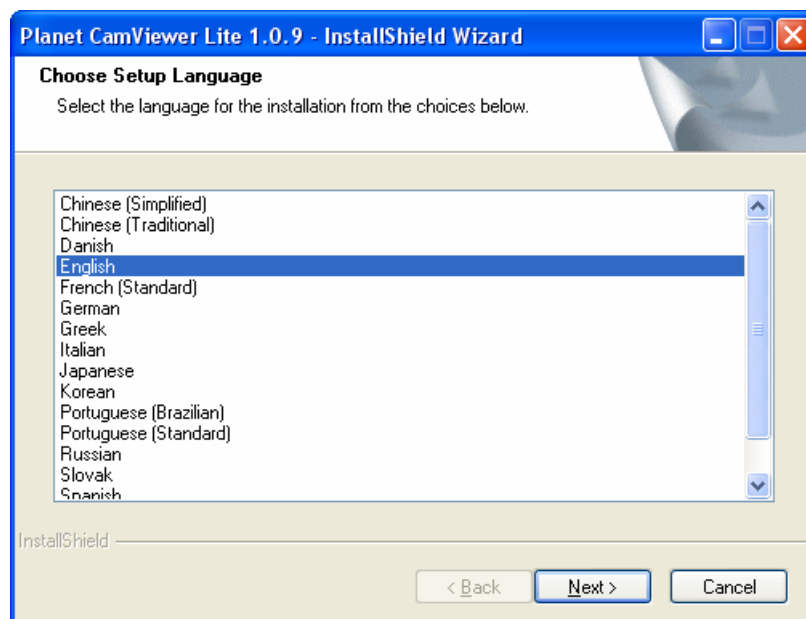
- NOTE:**
1. Also it does strongly recommend that close the unnecessarily programs while running Cam Viewer to monitor and record video stream from IP cameras.
  2. Total FPS Means all the cameras will spend how many frames when this software works. Suppose there are 10 cameras, each one will work with 30fps, the total fps should be 300fps.

## Chapter 2. Cam Viewer Installation

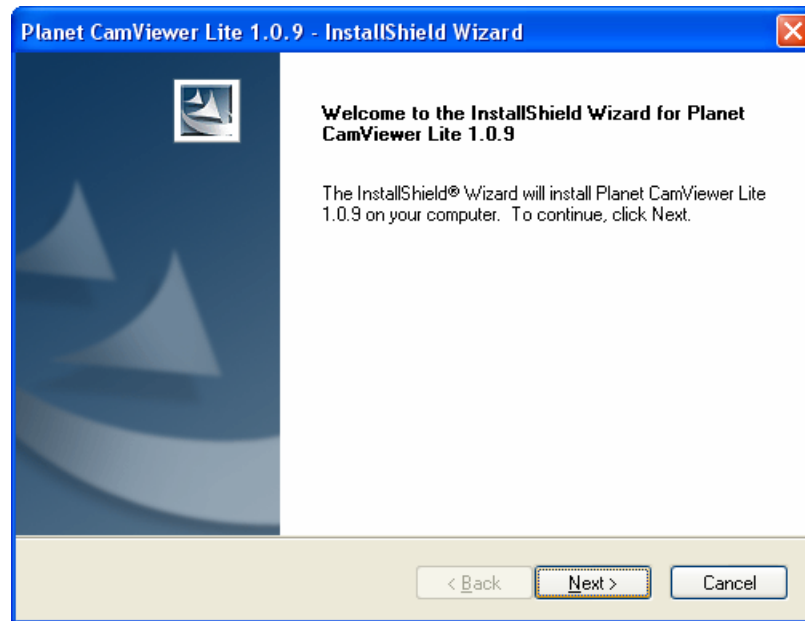
1. Insert the bundled Cam Viewer CD disk into the CD-ROM drive to launch the autorun program. Once completed, a welcome menu screen will appear. Click the “Cam Viewer Lite” hyperlink, the below InstallShield Wizard dialog box will appear.

**NOTE:** If the welcome screen does not appear, click “Start” at the taskbar. Then, select “Run” and type “D:\Cam Viewer Lite\setup.exe”, assume “D” is your CD-ROM drive.

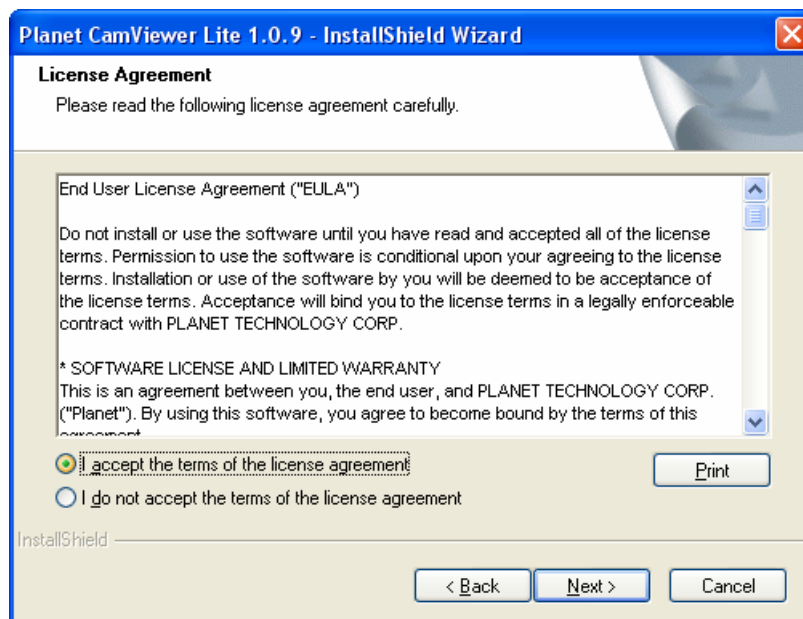
2. Selects the language which you want, Cam Viewer is current including fifteen languages – Chinese (Simplified), Chinese (Traditional), Czech, Danish, English, Finnish, French (Standard), German, Greek, Hungarian, Italian, Japanese, Korean, Portuguese (Brazilian), Portuguese (Standard), Russian, Slovak, Spanish, Thai and Turkish. Please select the language and click “Next” to continue.



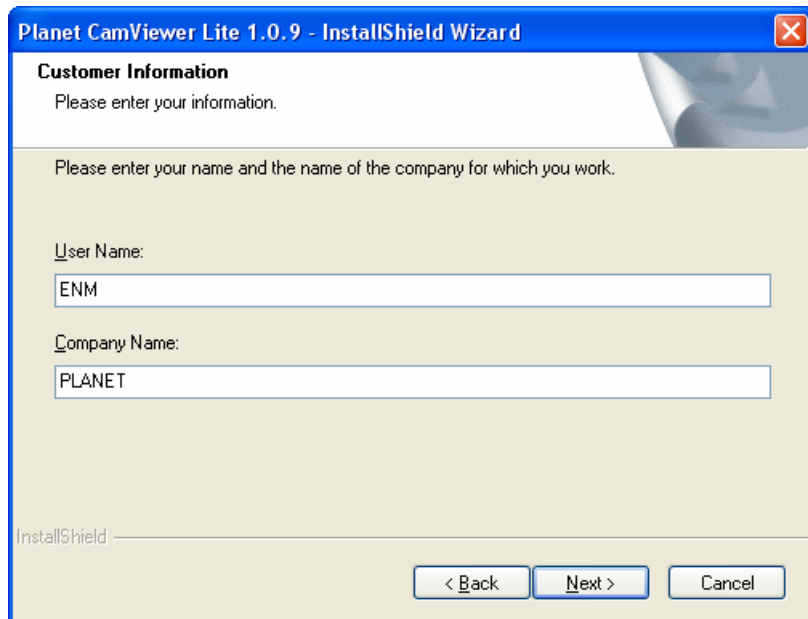
3. The "Welcome to the InstallShield Wizard for Planet Cam Viewer Lite 1.0.9" will display on the screen, please click "Next".



4. Please read the license agreement and then check "I accept the terms of the license agreement" if you are agreed and click "Next" to continue.

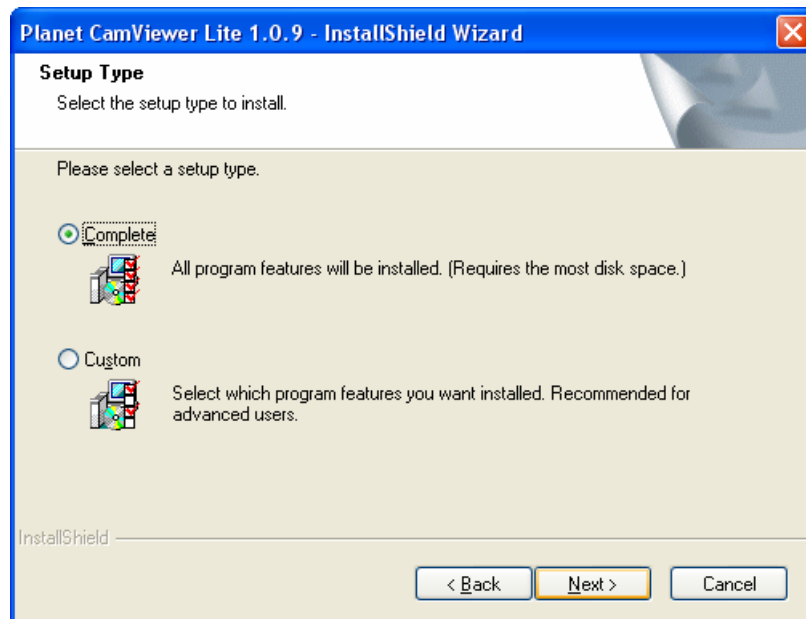


5. Please key-in user name and company name for which you want and click “Next” to continue.



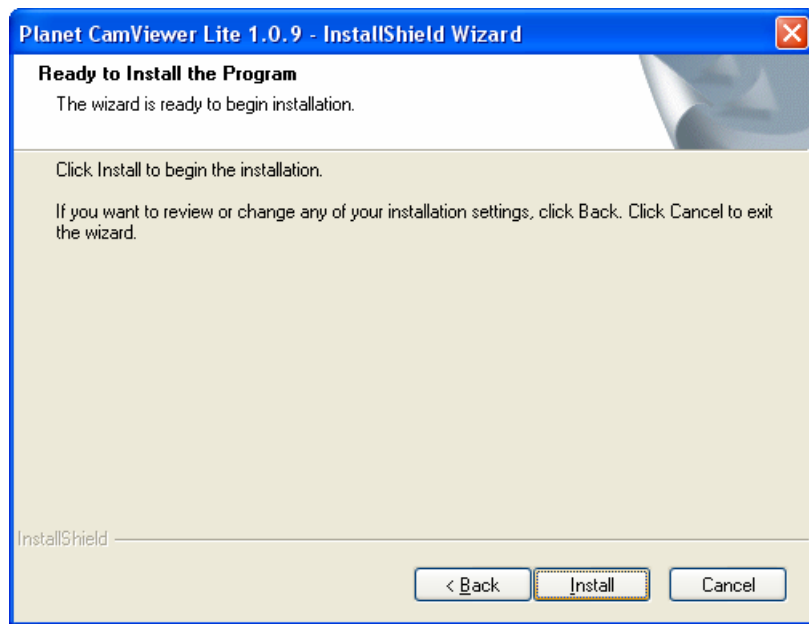
The screenshot shows the 'Customer Information' screen of the Planet CamViewer Lite 1.0.9 - InstallShield Wizard. The window has a blue title bar with the text 'Planet CamViewer Lite 1.0.9 - InstallShield Wizard' and a close button. The main area is light beige with a blue header bar containing the title 'Customer Information' and a sub-header 'Please enter your information.' Below this, there is a prompt 'Please enter your name and the name of the company for which you work.' followed by two text input fields. The first field is labeled 'User Name:' and contains the text 'ENM'. The second field is labeled 'Company Name:' and contains the text 'PLANET'. At the bottom of the window, there is a status bar with the text 'InstallShield' and three buttons: '< Back', 'Next >', and 'Cancel'.

6. Check the option “Complete – all program features will be installed (Requires the most disk space)” and click “Next”.



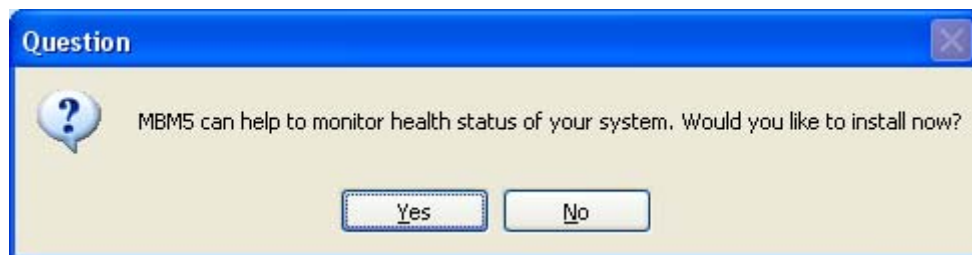
The screenshot shows the 'Setup Type' screen of the Planet CamViewer Lite 1.0.9 - InstallShield Wizard. The window has a blue title bar with the text 'Planet CamViewer Lite 1.0.9 - InstallShield Wizard' and a close button. The main area is light beige with a blue header bar containing the title 'Setup Type' and a sub-header 'Select the setup type to install.' Below this, there is a prompt 'Please select a setup type.' followed by two radio button options. The first option is 'Complete' with a selected radio button and a description 'All program features will be installed. (Requires the most disk space.)'. The second option is 'Custom' with an unselected radio button and a description 'Select which program features you want installed. Recommended for advanced users.' At the bottom of the window, there is a status bar with the text 'InstallShield' and three buttons: '< Back', 'Next >', and 'Cancel'.

7. "Ready to Install the Program" will appear to prompt you to start the installation. Please click "Install" to start.



8. You may click "No" to finish the Cam Viewer installation or click "Yes" to install the additional utility - MBM5.

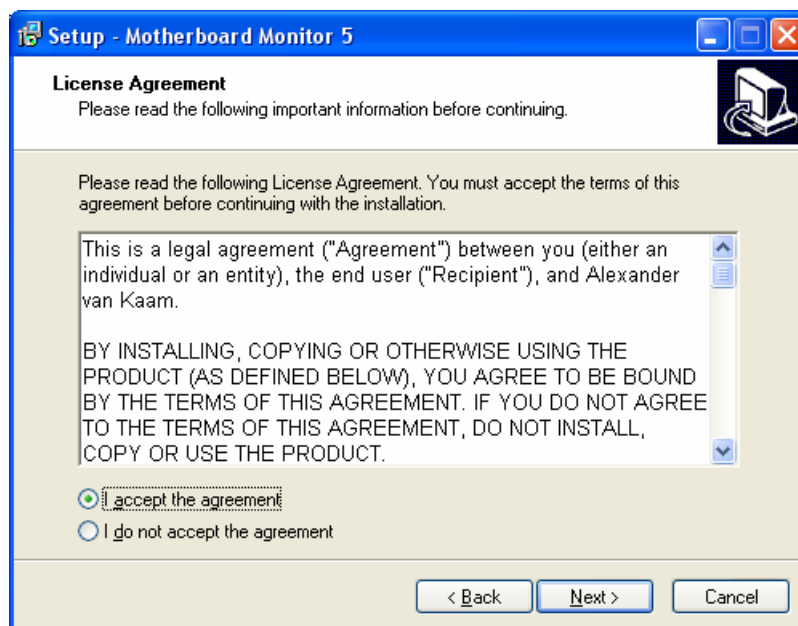
**NOTE:** When Cam Viewer works with MBM5 (Motherboard Monitor 5), Cam Viewer will display CPU temperature and fan speed. Please click "No" if you don't need this function and the Cam Viewer installation will be finished. When you click "Yes", please refer to below steps to start the MBM5 installation.



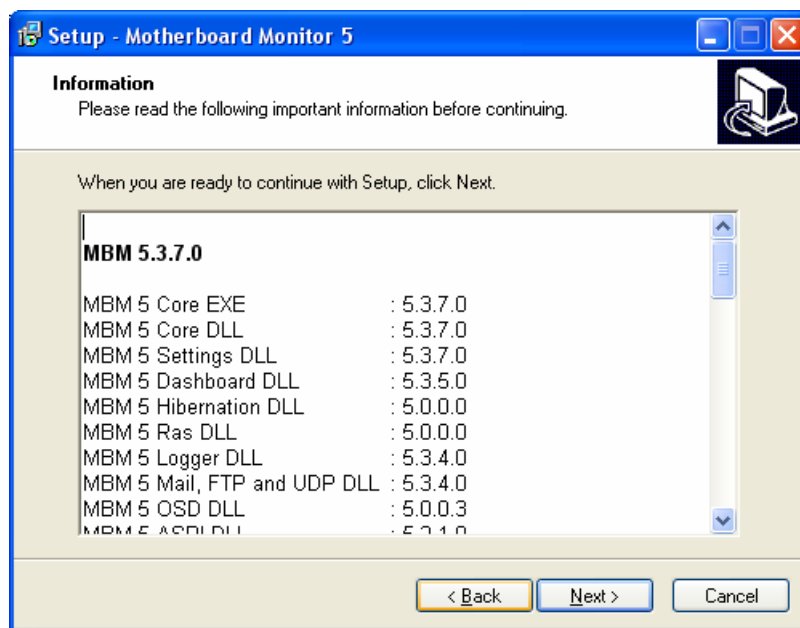
9. The "Welcome to the Motherboard Monitor 5 Setup Wizard" will display on the screen and click "Next".



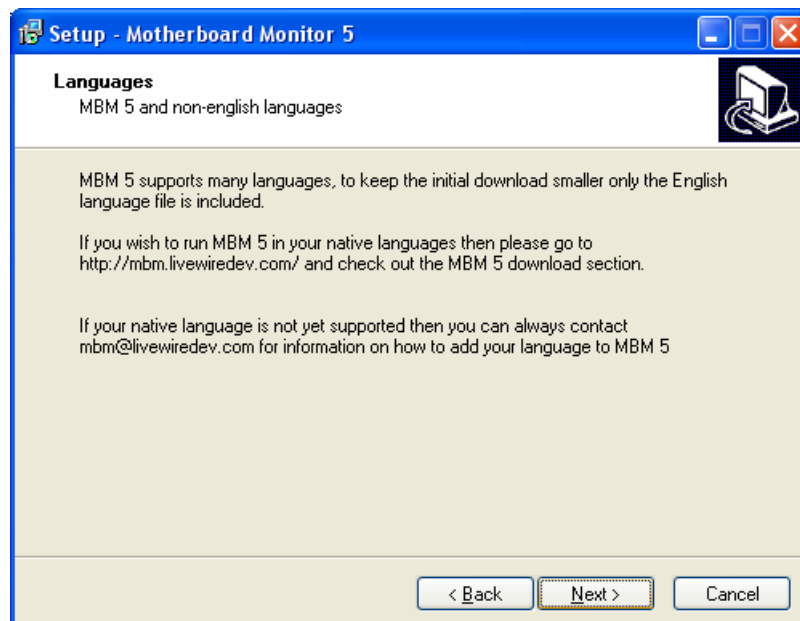
10. Please read the license agreement and then check "I accept the agreement" if you are agreed and click "Next" to continue.



11. Please read the following important information before continuing and click “Next” to continue.

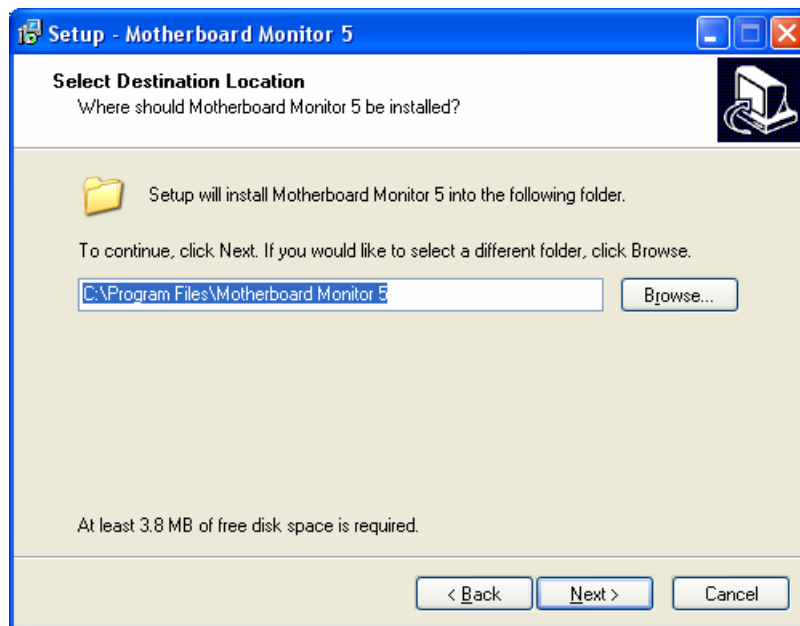


12. Please click “Next” to continue installation.

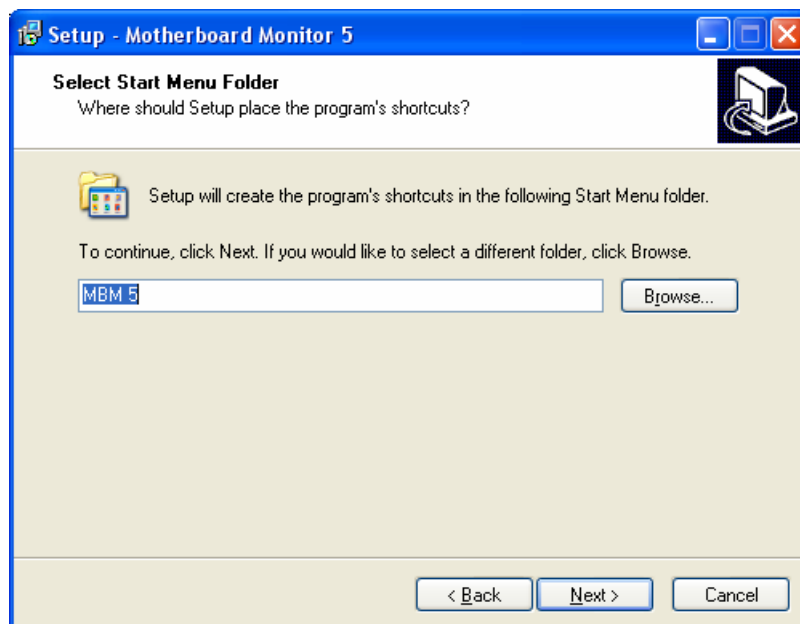




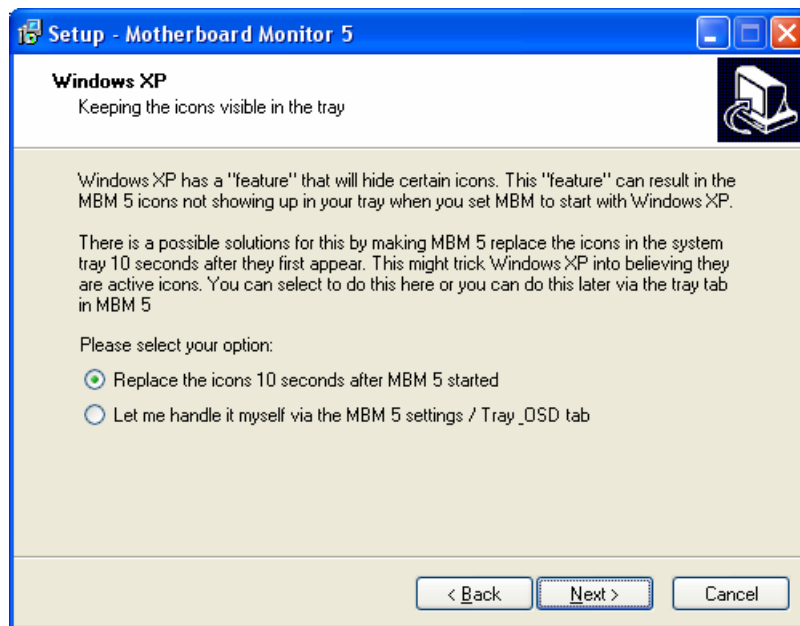
13. Please click “Next” to install with original settings, or you may click “Browse...” button to assign an install folder then press “Next”.



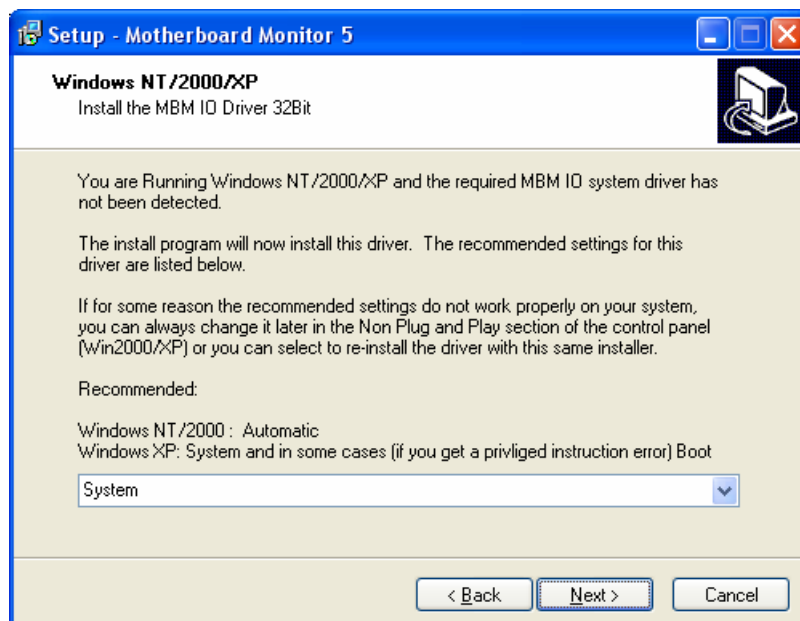
14. Please click “Next” to install with original settings, or you may click “Browse...” button to rename the program’s shortcut of Start Menu then press “Next”.



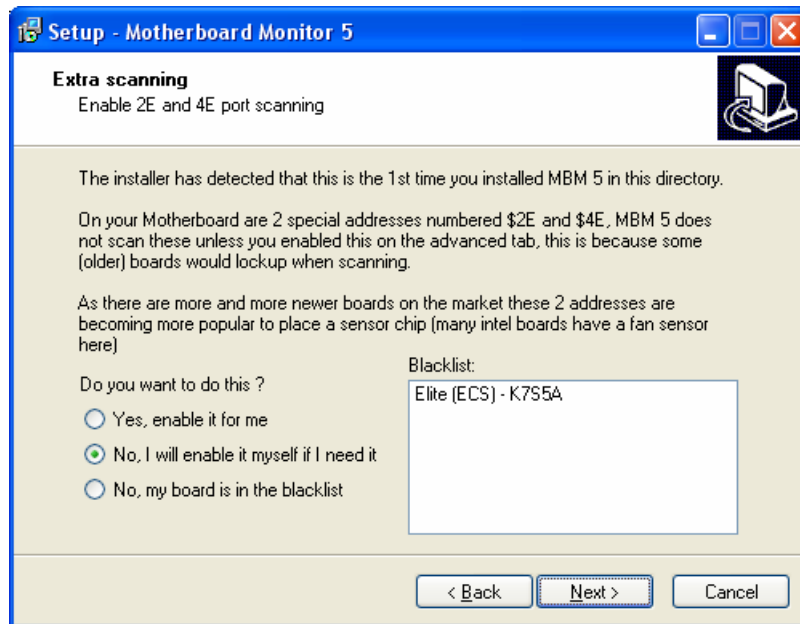
15. Please select “Replace the icons 10 seconds after MBM5 started” and click “Next” to continue installation.



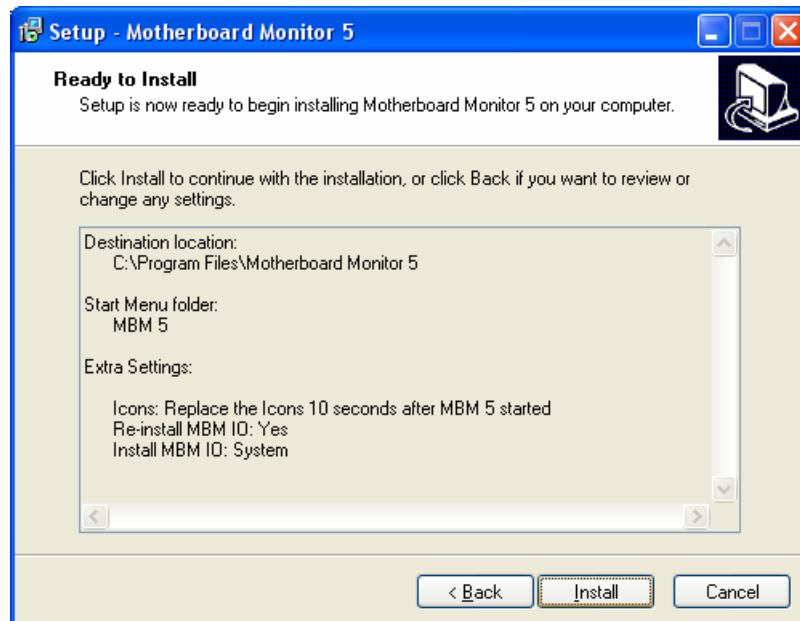
16. Please click “Next” to continue installation.



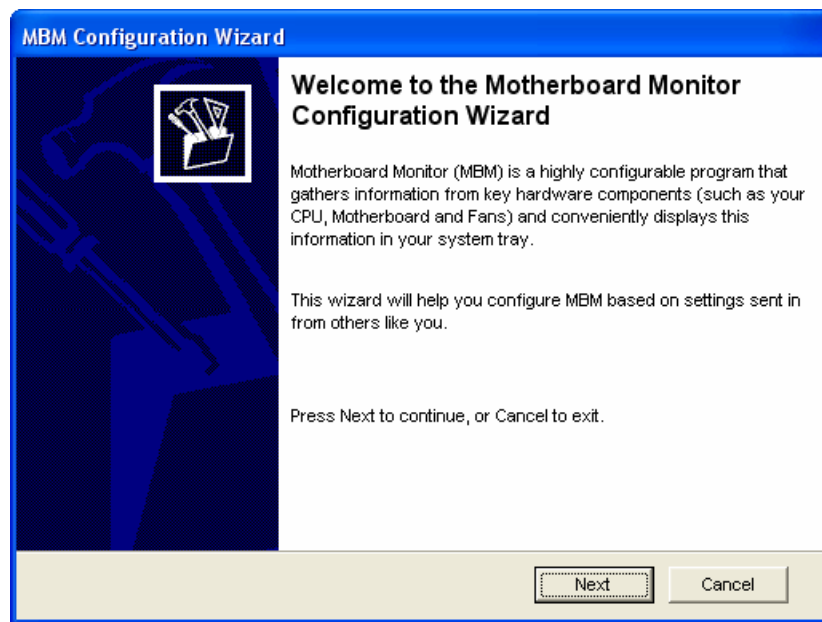
17. According to your motherboard to select correct option and click “Next” to continue.



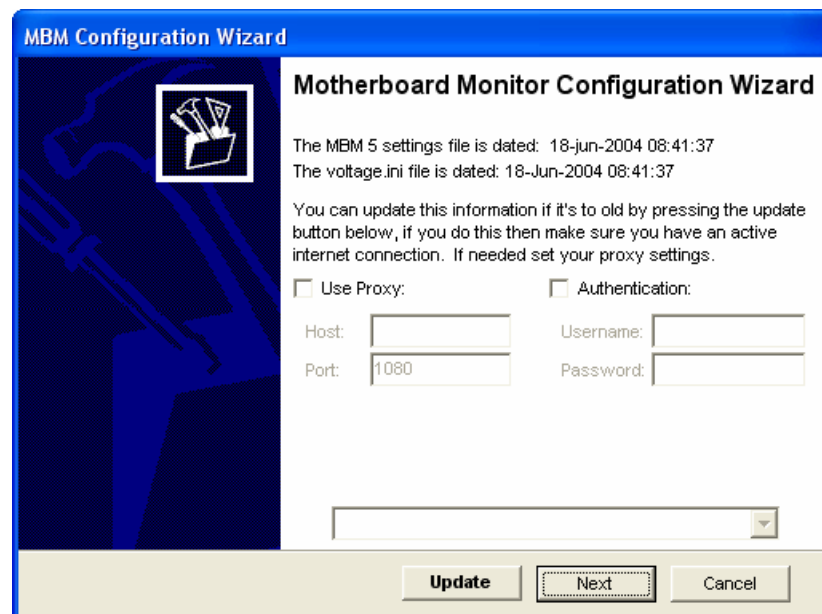
18. When “Ready to Install the Program” will display on the screen and click “Install” to continue.



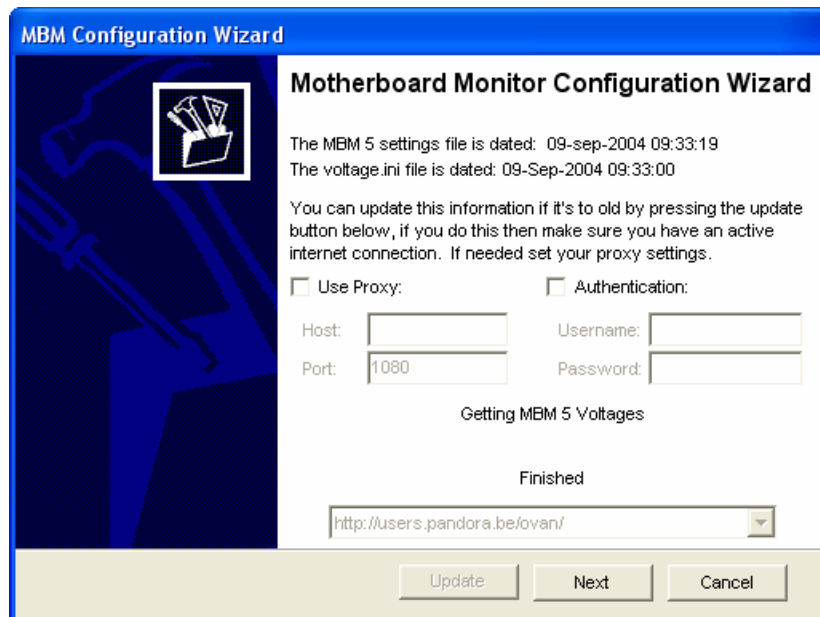
19. The “Welcome to the Motherboard Monitor Configuration Wizard” will display on the screen, please click “Next” to continue.



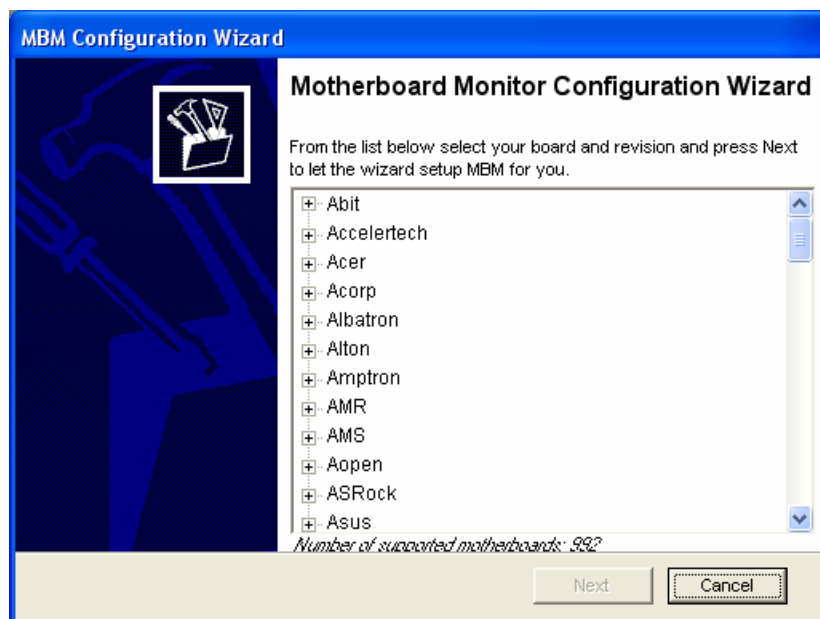
20. The “Motherboard Monitor Configuration Wizard” will display on the screen, please click “Update” to update data. Before update, please make sure your PC is connected to Internet already.



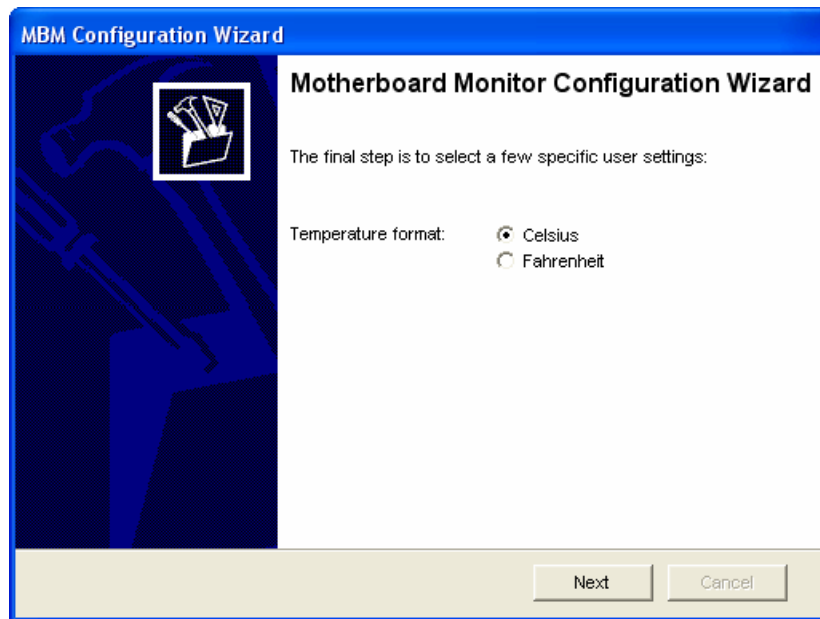
21. Wait a moment, after the program update finish, please click “Next” to continue.



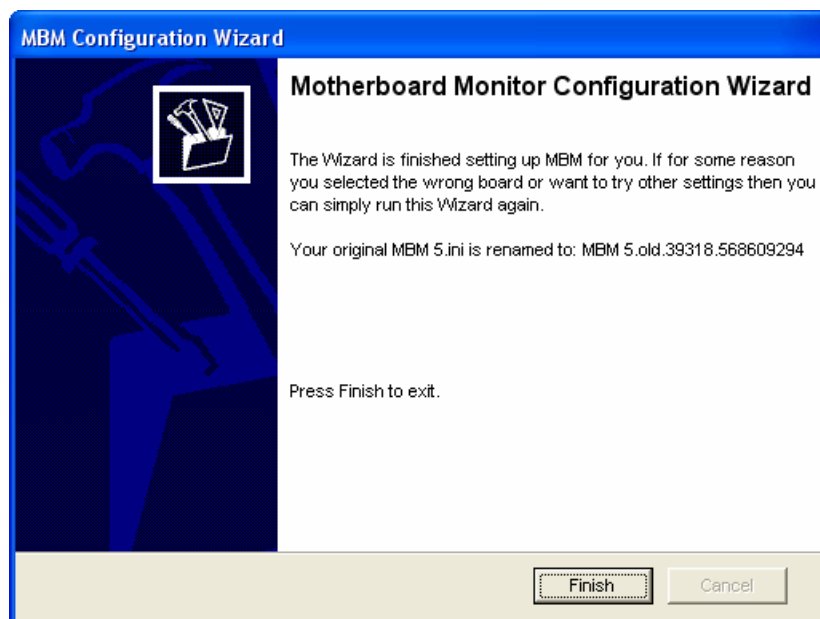
22. Please select your motherboard vendor and model name, then click “Next” to continue



23. Please select temperature format and click “Next” to continue.



24. Please click “Finish” to end the motherboard monitor configuration wizard.

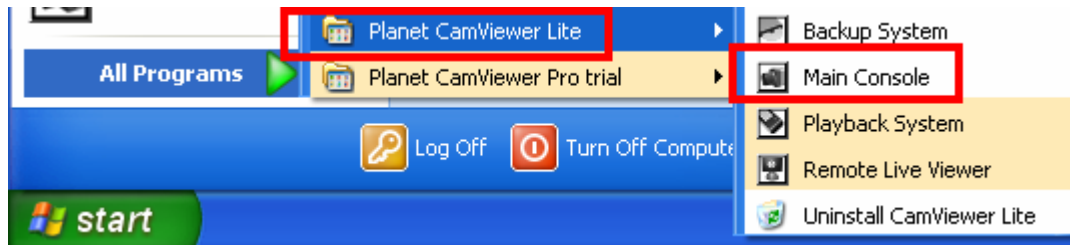


25. Please click "Yes" to restart your computer.



## Chapter 3. Import Surveillance Product

To start the Cam Viewer that click on Start > All Program > Planet CamViewer Lite > Main Console



Enter the password you like into the edit box and enter again at the edit of password confirm. And the press "OK".

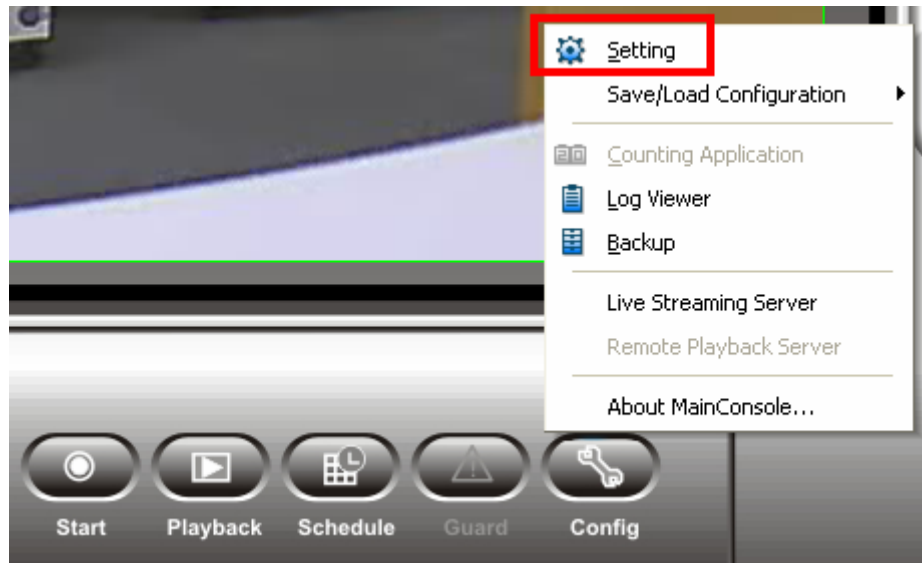


The Main Console will display on the screen.

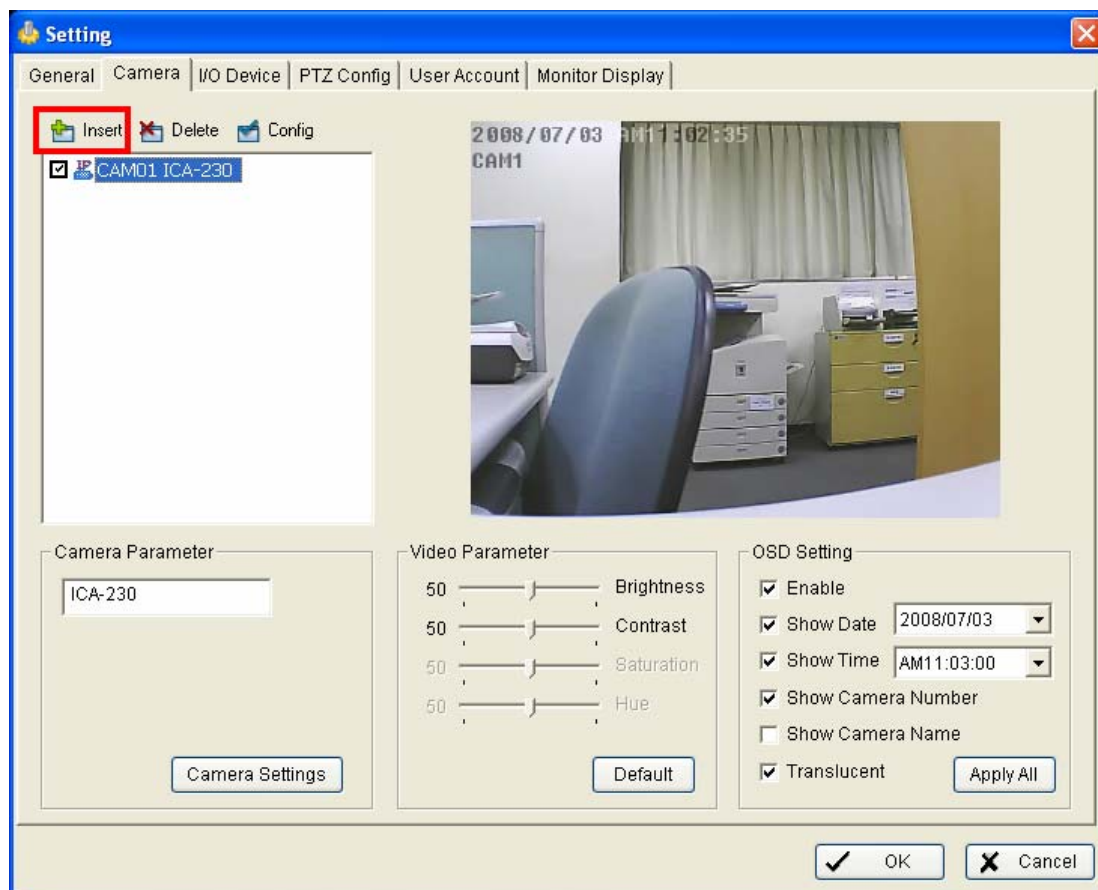




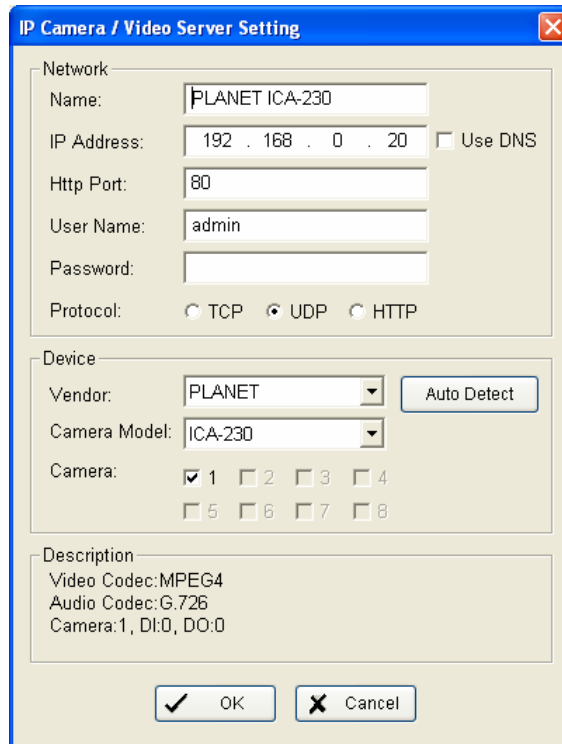
In Main Console, go to “Config” and click “Setting” to open the Setting dialog box



The Setting window will display on the screen, please go to “Camera” page and click “Insert” for insert IP camera.



The “IP Camera / Video Server Setting” dialog box will display. Please enter the Name, IP Address, User Name and Password, and then click “Auto Detect” and “OK” to finish inserted camera procedure.



The dialog box is titled "IP Camera / Video Server Setting" and contains three main sections: Network, Device, and Description.

**Network Section:**

- Name: PLANET ICA-230
- IP Address: 192 . 168 . 0 . 20 ☐ Use DNS
- Http Port: 80
- User Name: admin
- Password: (empty field)
- Protocol: ☐ TCP ☒ UDP ☐ HTTP

**Device Section:**

- Vendor: PLANET (dropdown menu)
- Camera Model: ICA-230 (dropdown menu)
- Camera: ☒ 1 ☐ 2 ☐ 3 ☐ 4  
☐ 5 ☐ 6 ☐ 7 ☐ 8

**Description Section:**

- Video Codec: MPEG4
- Audio Codec: G.726
- Camera: 1, DI:0, DO:0

At the bottom, there are two buttons:  and .

### Further Configuration

If you want to configure more detail settings of Cam Viewer, please refer to the user manual in the CD disk.

## Appendix A: Feature Listing for Cam Viewer

Product	Cam Viewer Lite	Cam Viewer Pro Single-Brand	Cam Viewer Pro Multi-Brand
<b>Main Console</b>			
IP Cameras Input(s)	32 Channels	4 / 8 / 16 / 32 / 64 Channels	4 / 8 / 16 / 25 / 32 / 64 Channels
Dual Monitor	N/A	Yes	Yes
Recording Schedule	Yes	Yes	Yes
Smart Guard	N/A	Yes	Yes
<b>Config Settings</b>			
General	Yes	Yes	Yes
Camera	Yes	Yes	Yes
I/O Device	Yes	Yes	Yes
PTZ Config	Yes	Yes	Yes
Hotline	N/A	Yes	Yes
User Account	Yes	Yes	Yes
Address Book	N/A	Yes	Yes
Monitor Display	N/A	Yes	Yes
Max. Resolution	640 x 480	640 x 480	1280 x 1024 (Mega-Pixel)
Video Format	M-JPEG, MPEG-4	M-JPEG, MPEG-4	M-JPEG, MPEG-4, H.264
Counting Application	N/A	2-way counting	2-way counting
Log Viewer	Unusual event; System log	Unusual event; System log; Counting application	Unusual event; System log; Counting application
Backup	CD-ROM; Hard Disk	CD-ROM; Hard Disk	CD-ROM; Hard Disk
Live Streaming Server	Unlimited	Unlimited	Unlimited
Remote Playback Server	N/A	Unlimited	Unlimited

### Play Back

Concurrent Playback	1 Channel	16 Channels	16 Channels
Smart Search	General Motion	General Motion; Missing Object; Signal Lost; Foreign Object; Lose Focus; Camera Occlusion	General Motion; Missing Object; Signal Lost; Foreign Object; Lose Focus; Camera Occlusion
Enhancement	Visibility; Sharpen; Brightness; Contract; Grey Scale	Visibility; Sharpen; Brightness; Contract; Grey Scale	Visibility; Sharpen; Brightness; Contract; Grey Scale
Save Video	AVI	AVI	AVI
Save Image	BMP; JPG	BMP; JPG	BMP; JPG
Print	Supported	Supported	Supported
Backup	CD-ROM; Hard Disk	CD-ROM; Hard Disk	CD-ROM; Hard Disk
Log Viewer	Unusual event; System log	Unusual event; System log; Counting application	Unusual event; System log; Counting application
Setting	Play; Capture Image	Play; Capture Image	Play; Capture Image
Remote Playback	N/A	Supported	Supported
Multiple Language	Supported	Supported	Supported
<b>Remote Live Viewer</b>			
Channel(s)	1	16	16
PTZ Control	Supported	Supported	Supported
<b>Web Viewer</b>			
Channel(s)	1	4	4

## Appendix B: Ordering Information for Cam Viewer Pro

<b>CVP-4</b>	4-Channel Single-brand Cam Viewer Professional
<b>CVP-8</b>	8-Channel Single -brand Cam Viewer Professional
<b>CVP-16</b>	16-Channel Single -brand Cam Viewer Professional
<b>CVP-32</b>	32-Channel Single -brand Cam Viewer Professional
<b>CVP-64</b>	64-Channel Single -brand Cam Viewer Professional
<b>CVP-M4</b>	4-Channel Multi-brand Cam Viewer Professional
<b>CVP-M8</b>	8-Channel Multi-brand Cam Viewer Professional
<b>CVP-M16</b>	16-Channel Multi-brand Cam Viewer Professional
<b>CVP-M25</b>	25-Channel Multi-brand Cam Viewer Professional
<b>CVP-M32</b>	32-Channel Multi-brand Cam Viewer Professional
<b>CVP-M64</b>	64-Channel Multi-brand Cam Viewer Professional