

## Introduction

Congratulations on your purchase of the FriendlyNET GX5W Smart Switch. This device integrates 1000Mbps Gigabit Ethernet, 100Mbps Fast Ethernet and 10Mbps Ethernet network capabilities in a highly flexible package.

This GX5W Smart Switch has the following key features:

- 24 10/100Mbps auto-negotiation Fast Ethernet RJ45 ports
- 2 10/100/1000Mbps auto-negotiation Gigabit RJ45 ports (Model 424W only)
- 2 SFP miniGBIC ports (Model 424W only)
- All RJ45 ports support auto MDI/MDIX, so cross-over cables or up-link ports are not needed
- Full-/half-duplex transfer mode for 10/100Mbps RJ45 port
- Full-duplex transfer mode for Gigabit port
- Wire-speed reception and transmission
- Store-and-forward switching scheme capability to support rate adaptation and ensure data integrity
- Supports port-setting for Speed/Disable, Flow control
- Easy configuration via Web browser

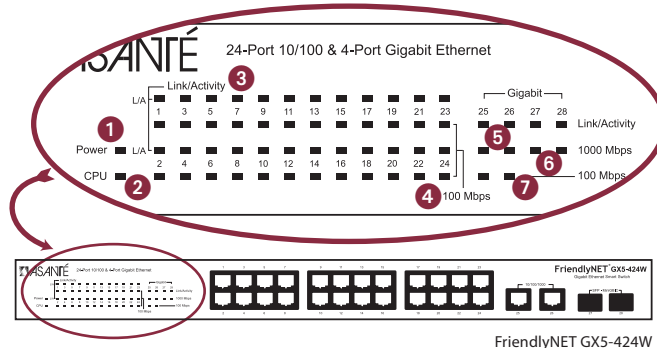
## Packing List

Your package contains the following items:

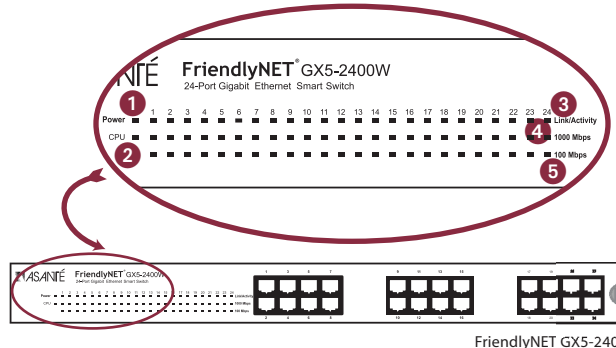
- (1) FriendlyNET GX5W Smart Switch Model GX5-424W –OR– GX5 Model 2400W
- (1) Quick Start Guide (this document)
- (1) AC power cord, suitable for your area's electrical power connections
- (4) Rubber feet to be used for shock cushioning
- (2) Rack mounting brackets and screws
- CD-ROM with GX5W Management Utility and User's Manual

## Diagnostic LEDs

Monitor the status of your network with these LED indicators:



FriendlyNET GX5-424W



FriendlyNET GX5-2400W

1. **Power:** On when the switch is receiving power.
2. **CPU:** Blinking when the processor is actively working. Off when system is idle. NOTE: LED on but not flashing indicates hanged system, switch must be reset.
3. **Link/Activity:** On when the port is successfully connected to an Ethernet network. Blinking when the port is transmitting or receiving data.
4. **100 Mbps:** On when the respective port is connected to a 100Mbps Fast Ethernet network.
5. **Link/Activity (Ports 25-28):** On when the port is successfully connected to an Ethernet network. Blinking when the port is transmitting or receiving data.
6. **1000 Mbps (Ports 25-28):** On when the respective port is connected to a 1000Mbps Gigabit Ethernet network.
7. **100 Mbps (Ports 25-26):** On when the respective port is connected to a 100Mbps Fast Ethernet network.

1. **Power:** On when the switch is receiving power.
2. **CPU:** Blinking when the processor is actively working. Off when system is idle. NOTE: LED on but not flashing indicates hanged system, switch must be reset.
3. **Link/Activity:** On when the port is successfully connected to an Ethernet or Fast Ethernet network. Blinking when the port is transmitting or receiving data.
4. **1000 Mbps:** On when the port is connected to a 1000Mbps Gigabit Ethernet network.
5. **100 Mbps:** On when the respective port is connected to a 100Mbps Fast Ethernet network.

Visit Asanté online at [www.asante.com](http://www.asante.com)

**Main Corporate Telephone Number**  
408-435-8388

**Technical Support**  
801-566-8991 (Worldwide)

**Technical Support Fax**  
801-566-3787

Copyright © 2003 Asanté Technologies, Inc. Asanté and FriendlyNET are registered trademarks of Asanté Technologies, Inc. AsantéFast, the Asanté logo, and GigaNIX are trademarks of Asanté Technologies, Inc. All other brand names and products are trademarks or registered trademarks of their respective holders. All features and specifications are subject to change without prior notice. 06-00693-00 Rev. B (11/03)

## Quick Start Guide

### FriendlyNET GX5W Smart Switches



GX5-424W  
GX5-2400W

**ASANTÉ**  
[www.asante.com](http://www.asante.com)



**BUSINESS REPLY MAIL**  
FIRST CLASS MAIL PERMIT NO. 4195  
SAN JOSE CA

POSTAGE WILL BE PAID BY ADDRESSEE

REGISTRATION CARDS  
ASANTE TECHNOLOGIES INC  
821 FOX LANE  
SAN JOSE CA 95131-9882



## Asanté Product Registration Card

Name \_\_\_\_\_

Title \_\_\_\_\_

Company \_\_\_\_\_

Address 1 \_\_\_\_\_

Address 2 \_\_\_\_\_

City \_\_\_\_\_

State \_\_\_\_\_

Zip/Postal \_\_\_\_\_

Country \_\_\_\_\_

Phone \_\_\_\_\_

Fax \_\_\_\_\_

Email \_\_\_\_\_

Date of Purchase \_\_\_\_\_

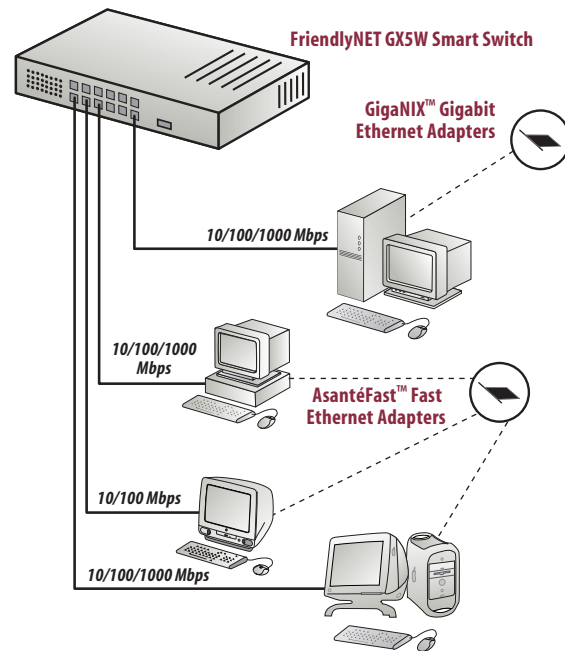
Asanté Part Number \_\_\_\_\_

Product Serial Number \_\_\_\_\_

To register your Asanté product online, please visit:  
<http://www.asante.com/support/registration.html>

## Connecting to Network Devices

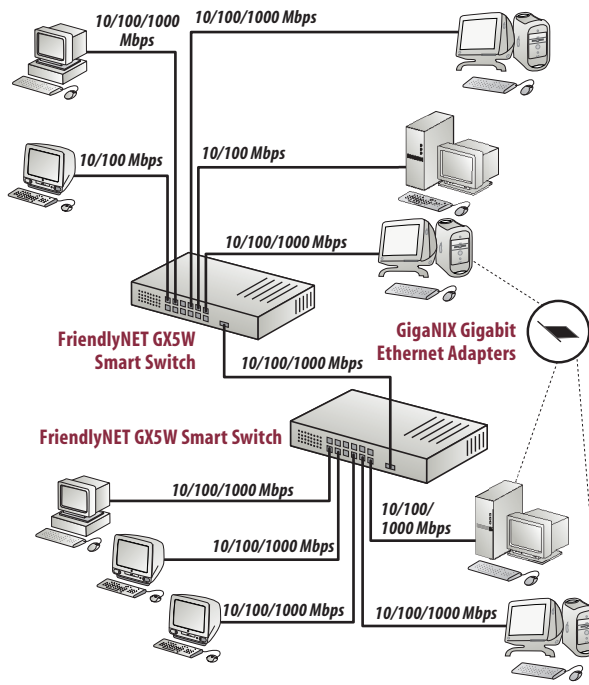
If you are connecting several workstations and a server, you can build the network using the GX5W switch as shown below.



**A Simple Network Topology**

## Connecting to an Existing Switch or Hub

When making switch-to-switch connections, connect any port of the GX5W Smart Switch with a Gigabit cable to a Gigabit port on the other switch.



**Multiple Switch Network**

Note: For 1000BaseT, 100BaseTX, and 10BaseT networks, the maximum cable length is 100 meters.

## Product Specifications

### Standards Supported:

IEEE 802.3 10BaseT Ethernet; IEEE 802.3u 100BaseTX Fast Ethernet; IEEE 802.3ab 1000BaseT Gigabit Ethernet; IEEE 802.3x Full-duplex Flow Control

### Protocol:

CSMA/CD

### Transfer Rate:

Ethernet: 10Mbps (half duplex), 20Mbps (full-duplex)  
 Fast Ethernet: 100Mbps (half duplex), 200Mbps (full-duplex)  
 Gigabit Ethernet: 2000Mbps (full-duplex)

### Topology:

Star

### Network Cables:

10BaseT: 2-pair UTP Cat. 3, 4, 5; up to 100m  
 100BaseTX: 2-pair UTP Cat. 5; up to 100m  
 1000BaseT: 4-pair UTP Cat. 5; up to 100m  
 Fiber module: SFP miniGBIC fiber module (GX5-424W only)

### Ports:

(24) 10/100Mbps Auto-MDIX RJ45 ports  
 (2) 10/100/1000Mbps Auto-MDIX RJ45 ports (GX5-424W only)  
 (2) SFP miniGBIC fiber slots (GX5-424W Only)  
 (24) 10/100/1000Mbps Auto-MDIX RJ45 ports (GX5-2400W only)

### Transmit Method:

Store and forward

### Filtering

**Address Table:** GX5-424W: 4K entries per device  
 GX5-2400W: 8K entries per device

### Packet Filtering/Forwarding Rate:

10Mbps Ethernet: 14,880/pps  
 100Mbps Fast Ethernet: 148,800/pps  
 1000Mbps Gigabit Ethernet: 1,488,000/pps

### MAC Address Learning:

Automatic update

### RAM Buffer:

GX5-424W: 768K bytes per device  
 GX5-2400W: 400K bytes per device

## Environmental Characteristics

**AC Inputs:** 100-240V AC, 50-60 Hz internal universal power supply

**Power Consumption:** 19Watts (Max)

**Temperature:** Operating: 0° ~ 40° C (32°F ~ 104°F)  
 Storage: -10° ~ 70° C (14°F ~ 158°F)

**Humidity:** Operating: 10% ~ 90%  
 Storage: 5% ~ 90%

**Dimensions:** 440 x 200 x 44 mm (W x H x D)  
 17.3 x 7.8 x 1.7 inches

**Emissions:** FCC Class A, CE Mark Class A, VCCI Class A

**Safety:** cUL(UL60950), CB(IEC60950)

## System Requirements

Compatible with Apple Mac OS, Linux, Microsoft Windows 95/98/Me/XP and Windows NT/2000 Professional/Server. Requires a 10/100 Mbps Fast Ethernet or 10/100/1000 Gigabit Ethernet port for each workstation, server or printer.

## Warranty

Two years of free telephone support, 24-hour support via web and FTP, with two-year product warranty.

## Need More Help?

Consult the Asanté website ([www.asante.com](http://www.asante.com)) for additional troubleshooting tips and frequently asked questions (FAQs). You may also contact Asanté Technical Support during standard business hours.

**Email:** support@asante.com

**Phone:** 801-566-8991

**Fax:** 801-566-3787

## FCC Compliance Statement

This equipment has been tested and found to comply with the specifications for a Class A digital device, pursuant to Part 15 of the FCC Rules. Operation is subject to the following two conditions:

1. This device may not cause harmful interference, and
2. This device must accept any interference received, including interference that may cause undesired operation.

These limits are designed to provide reasonable protection against harmful interference in a residential installation. This equipment generates, uses, and can radiate radio frequency energy and, if not installed and used according to the instructions, may cause harmful interference to radio communications. However, there is no guarantee that interference will not occur in a particular installation. If this equipment does cause harmful interference to radio or television reception, which is found by turning the equipment off and on, the user is encouraged to try to correct the interference by one or more of the following measures:

- Reorient or relocate the receiving antenna
- Increase the separation between the equipment or devices
- Connect the equipment to an outlet other than the receiver's
- Consult a dealer or an experienced radio/TV technician for assistance

FCC Caution: Any change or modification to the product not expressly approved by Asanté could void the user's authority to operate the device.

## FCC Radiation Exposure Statement

To comply with the FCC and ANSI C95.1 RF exposure limits, the antenna(s) for this device must comply with the following:

Devices with 2.4 GHz or 5 GHz integrated antenna must operate with a separation distance of at least 8 inches (20 cm) from all persons using the cable provided and must not be co-located or operating in conjunction with any other antenna or transmitter.

End users must be provided with specific operations for satisfying RF exposure compliance.

Note: Dual antennas used for diversity operation are not considered co-located.

## CE Mark Warning

This is a Class A product. In a domestic environment, this product may cause radio interference, in which case the user may be required to take adequate measures.