

# Leaptronix<sup>®</sup>

---

LEAPER-8 User's Manual



## Contents

<b>Chapter 1 Caution.....</b>	<b>1</b>
<b>Chapter 2 Software Installation.....</b>	<b>1</b>
<b>Chapter 3 Hardware Installation.....</b>	<b>2</b>
<b>Chapter 4 Driver Installation.....</b>	<b>4</b>
<b>Chapter 5 Software Operation.....</b>	<b>6</b>

## Chapter 1: Caution

1. The best resolution for this driver is 1024 \* 768 or above. The best DPI setting is normal size 96dpi.

Please press down the right button of mouse on the PC display, then select "Properties" at the lowest part and select "Settings" page at the most right, to adjust the best resolution setting.

Please press down the right button of mouse on the PC display, then select "Properties" at the lowest part and select "Settings" page at the most right, finally Press "Advanced" button at the low right corner. Please confirm the content of DPI Setting is "Normal size (96 DPI)".

2. We strongly recommend using the computer with internal USB port, not external interface card. Since some of external USB Cards may cause the using problems of instrument.

## Chapter 2: Software Installation

1. Please install the software first, and then connect the PC and the programmer. After that, install the driver. As for the driver installation steps, please see chapter 4.
2. If your computer OS supports Auto-Run, it will start up the installation program when you insert the CD-R into it. Please follow the Wizard to complete programming software installation.
3. If your computer OS doesn't support Auto-Run, please double click the installation program named a Setup.exe in the CD-R, then follow the Wizard to complete programming software installation.

## Chapter 3: Hardware Installation

### 1. Inspection of the Package

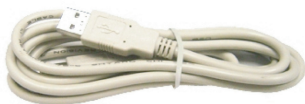
Once you receiving the programmer please checked the contents and see if there is something missing. The complete contents as following:



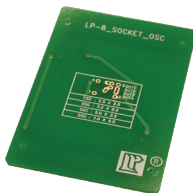
**Main Unit**



**Power Adaptor**



**USB Cable**

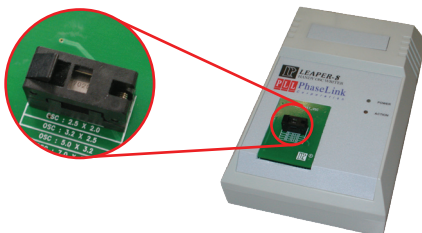


**Adaptor**

※If there are something missing, please contact with the local vendor as soon as possible.local vendor as soon as possible.

## 2. Adaptor Installation

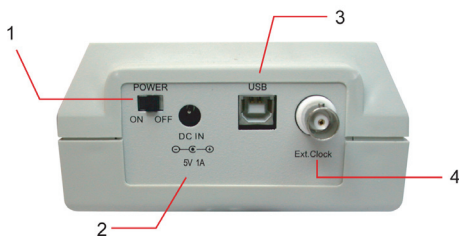
Adaptor installation as following:



## 3. Hardware Installation

Please refer to the below instruction to process the hardware installation.

1. Power switch: Please turn on after connected with 2.3 steps.
2. Power Adaptor connector: In the normal condition, just use the USB power supply will be enough. It should be not necessary to use the power adaptor. However, if on the power insufficient condition or need the more constant power source, please check the power switch is turn off and then, connect with the DC IN power adaptor.
3. USB port: Connect with Std-B connector of USB cable.
4. Ext. Clock BNC port: Connect with BNC cable when you choose external frequency input. (Please use the 10MHz working frequency; otherwise the sampling would be unusual). (Optional)

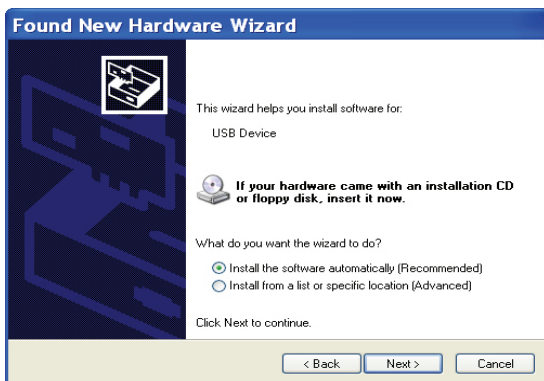


## Chapter 4: Driver Installation

1. Take out the programmer from the cartoon, and check if the power switch is turn off. Then insert the software disk into CD-ROM drive.
2. Use the USB cable to connect between the PC and the programmer. Std-A of USB cable connect with PC, and Std-B connect with USB port of the main unit. If use the power adaptor for constant power supply, please connect with DC IN power adaptor.
3. Turn on the power of the programmer. The power light on the programmer should be lighted up.
4. Check if the USB cable and power adaptor are connected correctly. When you turn on the power of the programmer, the message "Found New Hardware" should appear on the right bottom of your screen. Await "Can Windows connect to Windows Update to search for software" dialog box to appear then choose the option "No, not this time". Then click the "Next" as below picture:



5. When appear "What do you want the Wizard to do?" dialog box, please choose the option "install the software automatically (Recommended)" then click "Next" as below picture:



6. If Windows shows you a warning dialog, please click "Continue Anyway" as below picture:

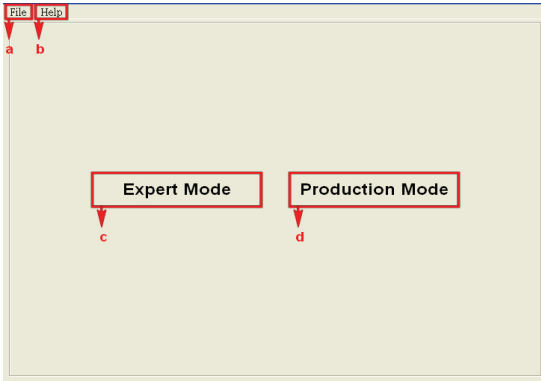




## Chapter 5: Software Operation

After finishing the installation steps, we can start with the programming software.

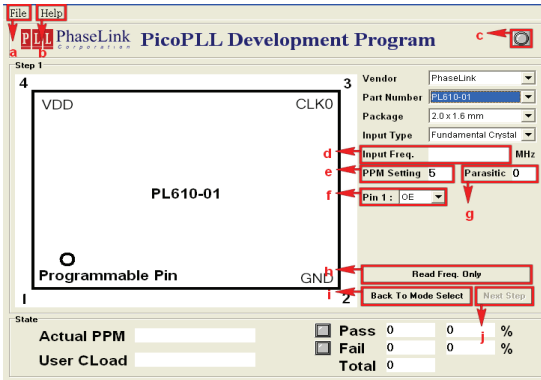
1. Mode selection and software instruction:



- a. Project file save (only for the Expert Mode), load and exit.
- b. Show the version of the application.
- c. Enter Expert Mode icon.
- d. Enter Production Mode icon.

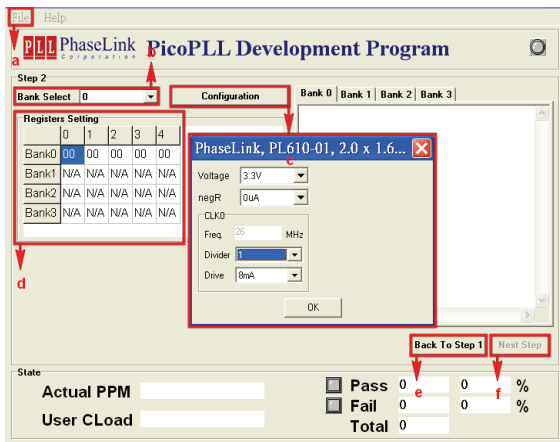
## 2. Expert Mode interface instruction:

Step1:



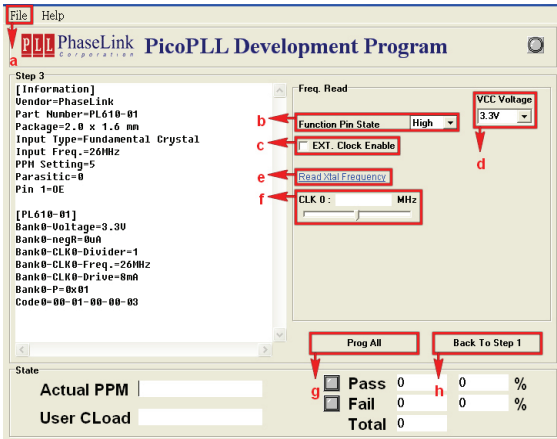
- a. Project file save, load and exit.
- b. Show the version of the application.
- c. Display the hardware connection status.
- d. Input the target frequency.
- e. The definition of PASS / FAIL. The default value is 5. Inside the scope of plus or minus 5 PPM belong to PASS, outside the scope will be defined to FAIL.
- f. Programmable pin features.
- g. Parasitic capacitance: If necessary, you should have to input the target of the parasitic capacitance in order to calculate more accurately.
- h. Skip to step3. Read target frequency only.
- i. Go back to mode selection dialog box.
- j. After input key item values, click this button to enter the step 2.

Step2:



- For exiting the program.
- Choose to be configured Bank
- Call configuration screen, the Bank be chosen will be configured.
- Configuration is complete. Show the configuration of the programming result.
- Go back step 1.
- After input key item values, click this button to enter step 3.

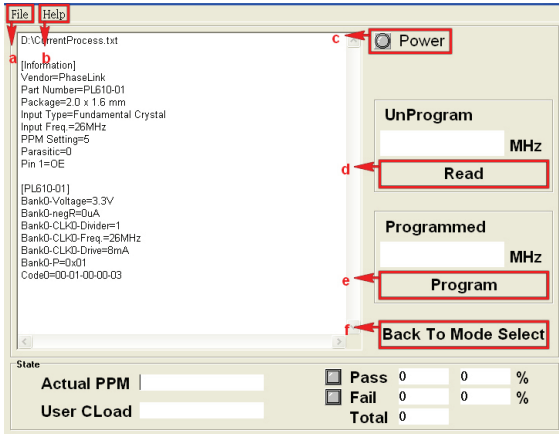
## Step3:



- Project file save or exit.
- Read the target frequency to choose the high or low voltage states for programmable pin.
- External input frequency switch.
- Read the target frequency of voltage level.
- Read the target frequency
- Display frequency after reading target frequency. In the bottom of the scroll is for set the voltage of the trigger comparison level when setting target frequency.
- ✖ The instrument has been set up the default. However, when you read instable frequency, it can be adjusted the voltage of trigger comparison level for obtaining the more stable frequency.
- Program the target frequency.
- Go back to Step 1.

## 3. Production Mode interface instruction:

When you click "Production Mode" button to enter, you will need to load a file that has save on the export mode.



- Project file save or exit.
- Show the version of the application.
- Display hardware connection status.
- Read the target frequency.
- Program the target.
- Go back to the mode of the selection dialog box.