



Security and Access Control

roger[®]



■ *The network of foreign partners*



ROGER was established in 1991. Its area of activity is designing and manufacturing security electronic devices, especially in the field of electronic access control.

Thanks to our long experience the products offered present a high functionality and stylistic level while maintaining high reliability. For manufacturing our products we use components from renowned vendors only, and we continually train our personnel and refine the manufacturing process. Within recent years, the company has considerably

expanded its area of activity, which has led to a necessity to enlarge the company's manufacturing ability. At present the company has a new manufacturing building, which has been designed and built according to the newest technology standards and in keeping with relevant industry principles.

The products we offer have acquired a reputation in the Polish market. This can be proved by the network of permanent customers from all over the country. At the same time, dynamic development of our offer during the recent years has led to acquiring many new customers in the countries from Europe and Asia.

ACCESS CONTROL

5	<i>A Guide To Roger Access Control Solutions</i>
6	<i>Code Locks</i>
6	• <i>SL2000 Code Locks</i>
8	• <i>Proximity Card Lock</i>
9	<i>RACS 4 Access Control System</i>
10	<i>Proximity Readers EM 125 kHz - PRTxxLT Series</i>
12	<i>Proximity Readers EM 125 kHz - PRTxxEM Series</i>
14	<i>Proximity Readers 13.56 MHz Mifare - PRTxxMF Series</i>
16	<i>Standard Access Controllers - PRxx1 Series</i>
18	<i>Advanced Access Controllers - PRxx2 Series</i>
20	<i>CPR32-SE Network Controller</i>
21	<i>RACS Management Software</i>
22	<i>RARC Software</i>
23	<i>Cards Programming Sets</i>
24	<i>Other Readers</i>
24	• <i>Administrator's Reader</i>
25	• <i>Biometric Readers</i>
25	• <i>Long Range Readers</i>
26	<i>Auxiliary Equipment</i>
26	• <i>Communication Interfaces</i>

27	• <i>Expanders</i>
28	<i>Transponders</i>
28	• <i>EM 125 kHz</i>
28	• <i>13.56 MHz MIFARE®</i>
29	<i>Cards Overprint</i>
30	<i>Accessories</i>
33	<i>Presentation and Training Materials</i>
	TIME AND ATTENDANCE
35	<i>RCP Master Software</i>
	GUARD TOUR SYSTEM
37	<i>Guard Tour System</i>
	SECURITY
39	<i>Dialers</i>
40	<i>Power Supplies</i>
41	<i>Alarm Sirens</i>
	SERVICES
42	<i>PCBA/EMS</i>
44	<i>Special Versions (OEM Products)</i>
45	<i>Advertising Materials</i>



Access Control



Code Locks

Electronic code locks are the simplest and the cheapest way to implement electronic access control. There are two code locks categories in the Roger's offer: code locks of SDC type working with proximity cards and SL2000 locks family working with PINs only.

In case of SDC lock, user identification is performed using proximity cards-keys. This product is extraordinarily easy in installation and usage and can be successfully installed by

electricians as well as by DIY amateurs without experience in the field of security systems.

SL2000 locks identify users through PIN codes. Devices from this series offer possibility to program up to 55 different codes and are preferred to be applied in Access Control installations. In parallel to controlling access they can also control any device or the system requiring switching of turn-on/turn-off type.

Proximity Readers

The basic purpose of proximity readers is to read the card code (and possibly PIN code) and sending them to a parent device, which takes the decision about how the system would react on using the relevant card/PIN. ROGER offers proximity readers of many types within the PRT series. We offer readers adapted for cooperation with cards of EM 125 kHz as well as Mifare 13.56 MHz standards.

All the PRT series readers (PRTxxLT, PRTxxEM, PRTxxMF) can be configured for work in a terminal mode as slave devices

attached to an external access controller. Furthermore, PRTxxEM and PRTxxMF series readers can work in a standalone mode as autonomous access control points.

In the terminal mode the readers offer possibility to work in many common communication standards (e.g. Wiegand, Magstripe, Clock and Data, RACS). Thanks to this they can cooperate not only with Roger controllers but also with majority of controllers from different vendors available on the market.

Access Controllers

The company offers two access controllers families named: PRxx1 (e.g. PR311SE, PR611 etc.) and PRxx2 (e.g. PR302, PR402 etc.). Both PRxx1 and PRxx2 controllers can work autonomously in a standalone mode as well as in a networked access control system equipped with CPR32-SE network controller and supervised by a PR Master control software. Within each of these families there are devices integrated with a proximity reader and possibly with a keypad (e.g. PR311SE, PR611) as well as models requiring connection of external readers (e.g. PR402, PR411DR). The PRxx1 series controllers are simpler devices designed for performing most common access control functions. They can support up to 1000 users, are relatively simple to use, and cheap. The PRxx2 controllers form a family of advanced access controllers capable of supporting up to 4000 users.

The controllers of this series offer wide range of functionalities, not only strictly related to access control but also allowing for integration with alarm systems, performing Automation as well as Time & Attendance functions. There is a free software available PR Master 4, which can be used for management of systems consisting of PRxx1 and PRxx2 series controllers. The program allows for configuring the system and monitoring it in an online mode. There is also a SDK package available for the PR Master, which allows for software integration of the access control system with third-party systems and programs using API.



SL2000 Code Locks

SL2000 series electronic code locks were designed as simple and cheap access control devices that identify users by PIN codes.

Devices belonging to this series have identical functionality, and differences between them are limited only to mechanical construction, style of casing and operation environment (outdoor or indoor use).

Features:

- One 1.5A/30V relay output and two transistor outputs
- Alarm signaling on the transistor output (ALARM)
- Input for connecting a Door Contact
- Input for connecting an Exit Button
- Administrator code for programming and users codes management
- Master Code for controlling the lock's mode of operation
- 55 user codes for door opening
- Possibility for temporary lock's blocking after three unsuccessful code entering attempts
- Possibility for room entrance blockage when the lock is in armed mode
- Programmable code length
- User indexing
- Non-volatile memory
- Three LED indicators and a Buzzer
- Power Supply 10-15VDC
- Tamper
- CE mark

CLASSIC



SL2000B

Indoor code lock, case made with ABS, bolted contacts, silicone keypad with backlight.



SL2000H

NEW

Outdoor, vandal resist code lock, case made with aluminum alloy powder coated painted, bolted contacts, access to the keypad protected by key-locked doors, silicone keypad with backlight.

**SL2000F****NEW**

Indoor code lock, case made with ABS, bolted contacts, silicone keypad with backlight, mountable directly in a 60 mm gang box.

**SL2000F-VP****NEW**

Outdoor, vandal resist code lock, top part of case and keys made with aluminium alloy and covered with silver-metallic coat, connecting cable 0.5 m, mountable directly in a 60 mm gang box.

radius

**SL2000E**

Outdoor code lock, case made with ABS, connecting cable 0.5 m, silicone keypad with backlight, two function keys.

DOMINO

**SL2000S1K**

Outdoor, vandal resist code lock, bolted contacts, case and keypad made with aluminum alloy and silvered galvanically.

NEW

Proximity Card Lock

SDC66 lock allows to implement a simple electronic access control mechanism, in which users are identified by contactless Prox-key. The lock can be utilized in areas, where it is necessary to limit access to the room to specific group of persons, and at the same time to free them from the need to carry many traditional mechanical keys.

SDC66 has been designed so that its installation and deployment could be performed both by professional electrician-installers, and by DIY amateurs who have no professional background. A brand-new lock is configured with factory defaults in such a way, that in majority of cases its programming will not be required.

Features:

- Identification by proximity Prox-key
- Possibility to program up to 120 Prox-key
- Optionally works with any number of Prox-key (any Prox-key opens the door)
- Selectively adds and removes Prox-key
- Support for Door Contact and Exit Button
- One relay output 1.5A/30V and one transistor output 1A/15V
- Alert states signaling
- The lock can be mounted in the flush mounting box or directly on the wall
- Works outside and inside buildings
- Supplied from 12VDC Power Supply Adapter or from 12 VAC transformer
- Tamper
- CE mark

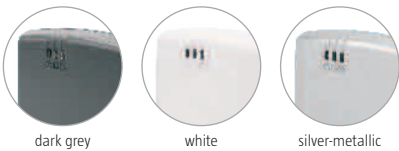
Set includes:

- SDC66 lock
- Transformer
- Flush cable box with a set of fixing screws
- Master card for programming (1pc.)
- Prox-key (5pcs.)
- User manual



SDC66

Outdoor, standalone proximity card lock, bolted contacts, mountable directly in a 60 mm gang box.



dark grey

white

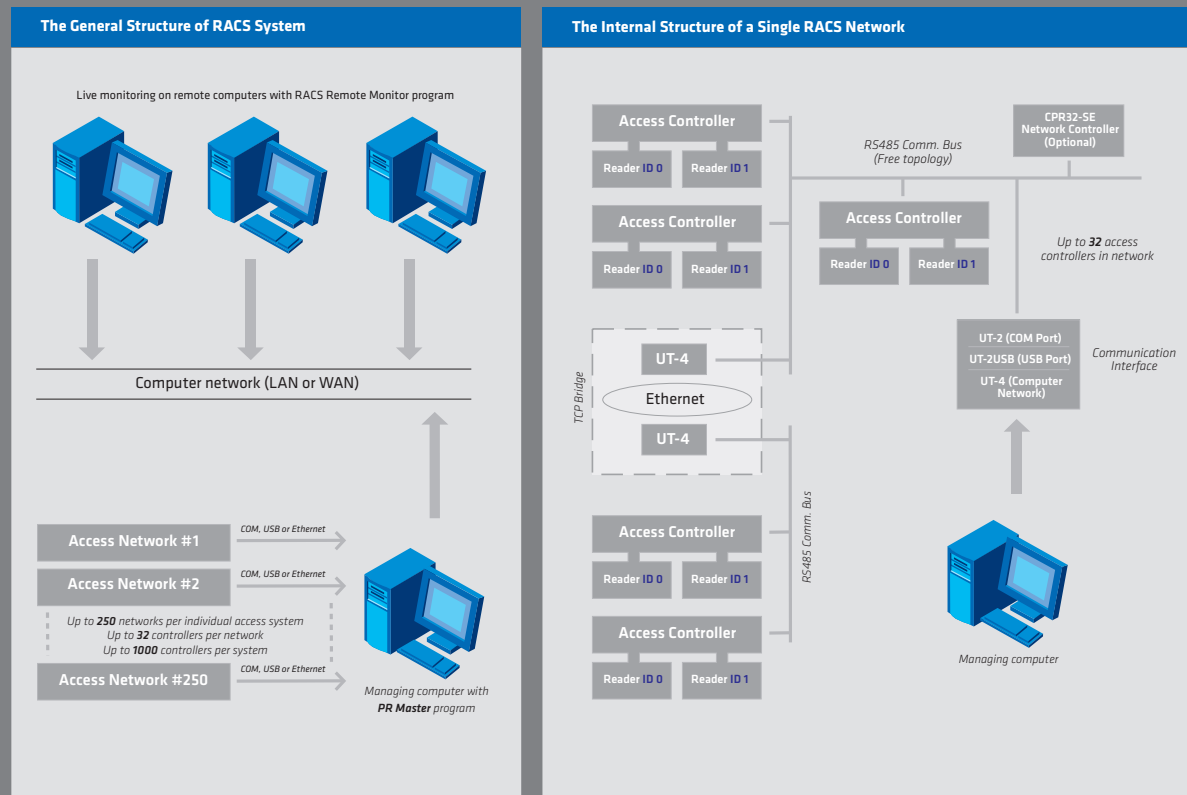
silver-metallic

Available versions and symbols	
Symbol	Description
SDC66-G-SET	Lock with set of accessories and transformer. Dark grey case.
SDC66-W-SET	Lock with set of accessories and transformer. White case.
SDC66-S-SET	Lock with set of accessories and transformer. Silver-metallic case.
SDC66-G-LOCK	Lock with set of accessories without transformer. Dark grey case.
SDC66-W-LOCK	Lock with set of accessories without transformer. White case.
SDC66-S-LOCK	Lock with set of accessories without transformer. Silver-metallic case.
EMKF-4	Prox-key for SDC66 lock, key-fob form.
EMC-10	Prox-key for SDC66 lock, ISO card size.
EMC-7	MASTER card for lock programming.
EA-1	Additional antenna module for SDC66 lock.

The RACS 4 is a networked access control system based on the PR series controllers, PRT series readers, XM-2/XM-8 expanders, CPR network controllers and PR Master managing software.

System functionality depends on the type of equipment used in particular installation. The RACS 4 can be divided into separate branches which are called access networks, up to 250 networks (also called subsystems) can be integrated in one AC system installation. Each network may have up to 32 access controllers connected to RS485 communication bus (up to 1200m).

The PR Master program exchange data with individual network through separate serial communication port (COM or USB) or through computer network (WAN or LAN). The RACS 4 is dedicated for small or middle size access installations and is capable to handle up to 1000 controllers and up to 4000 users (PRxx2 series controllers) or up to 1000 users (PRxx1 series controllers).



NEW

PRTxxLT series readers is a group of access terminals designed for using with EM 125 kHz proximity cards.

All members of this series have identical functionality, and differences between them are limited only to operation environment, mechanical construction and style of casing. PRTxxLT series readers can operate in many common communication standards (e.g. Wiegand, Magstripe, Clock and Data, RACS), so they can cooperate with majority of controllers from different vendors available on the market.

Notice: PRTxxLT series readers can not operate in standalone mode as autonomous access controllers. Such functionality provides PRTxxEM and PRTxxMF series readers.

Features:

- 12VDC supply
- EM 125 kHz cards
- Programmable data output format
- Formats: Wiegand 26-66 bits, Magstripe (Clock and data), RACS (Roger) and other
- Various ways of PIN and keypad codes transmission
- LED and Buzzer controlled through separate inputs
- Outdoor installation (except: PRT32LT, PRT42LT and PRT42LT-BK)
- Manual setup
- Tamper
- CE mark



PRT62LT

Miniature EM 125 kHz outdoor proximity reader, connecting cable 0.5 m.



dark grey



light grey



silver-metallic

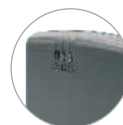
Available versions and symbols

Symbol	Description
PRT62LT-G	Dark grey case
PRT62LT-L	Light grey case
PRT62LT-S	Silver-metallic case



PRT66LT

EM 125 kHz outdoor proximity reader, bolted contacts, mountable directly in a 60 mm gang box.



dark grey



white



silver-metallic

Available versions and symbols

Symbol	Description
PRT66LT-G	Dark grey case
PRT66LT-W	White case
PRT66LT-S	Silver-metallic case

radius



PRT12LT

EM 125 kHz outdoor proximity reader, connecting cable 0.5 m, silicone keypad with backlight, two function keys.



dark grey



light grey

Available versions and symbols

Symbol	Description
PRT12LT-G	Dark grey case, keypad
PRT12LT-L	Light grey case, keypad
PRT12LT-BK-G	Dark grey case, without keypad
PRT12LT-BK-L	Light grey case, without keypad
PRT12LT-G-B	Dark grey case, blue keypad backlight



PRT42LT

EM 125 kHz indoor proximity reader, bolted contacts, plastic keypad with backlight, Bell function key.



black



light grey

Available versions and symbols

Symbol	Description
PRT42LT-B	Black case, keypad
PRT42LT-L	Light grey case, keypad
PRT42LT-BK-B	Black case, without keypad
PRT42LT-BK-L	Light grey case, without keypad



PRT64LT

EM 125 kHz outdoor proximity reader, bolted contacts, silicone keypad with backlight, mountable directly in a 60 mm gang box.



dark grey



silver-metallic

Available versions and symbols

Symbol	Description
PRT64LT-G	Dark grey case
PRT64LT-S	Silver-metallic case

radius



PRT32LT

EM 125 kHz indoor proximity reader, bolted contacts, silicone keypad with backlight, configurable by user into version without keypad.

CLASSIC

PRTxxEM series readers is a group of access terminals designed for using with EM 125 kHz proximity cards.

Devices belonging to this series have identical functionality, and differences between them are limited only to operation environment, mechanical construction and style of casing. Each PRTxxEM series reader can be used as an universal identification point connected to the access controller or configured for autonomous work, as a simple access controller for a single door. In the first case, the reader's functionality is limited only to reading an identifier (card/PIN) and sending data to an external controller, which takes further action. In case of work in a standalone mode, PRTxxEM terminals can independently supervise a single door using data entered in the process of their configuration.

The PRTxxEM series readers are equipped with programmable input and output lines. They can also cooperate with XM-2 type I/O expander, which provides two relay outputs and two NO/NC inputs. Using an XM-2 expander substantially improves a general security level of an access point being controlled, because it physically separates a decision point (reader) from the working element blocking the door (relay from XM-2 module). Every PRTxxEM series reader can cooperate with a secondary PRT reader, thus allowing for controlling the door from both sides. The PRTxxEM series readers have built-in relay output and are equipped with RS232 interface which can be used for data communication or for programming a reader from a PC. Every PRTxxEM series reader can be used as card programmer (EMC-4 cards), however for this purpose the licensed version of RARC program is required (RARC-LICENSE).

Features:

- 12VDC supply
- EM 125 kHz cards
- Programmable data output format
- Formats: Wiegand 26-66bit, Magstripe (Clock and data), RS232, RACS (Roger) and others
- Various ways of PIN and keypad codes transmission
- LED and Buzzer controlled through separate inputs
- Outdoor installation
- Can be used for Q5 card programming (required licensed version of RARC program)
- Programmed manually or from PC
- Free managing software (RARC)
- May operate as an offline standalone access controller
- 120 indexed users
- Authentication: Card and/or PIN
- Event log for 3000 transactions
- Built-in programmable 1.5A/30V relay output
- Two NO/NC inputs
- Two transistor outputs
- Operation with XM-2 I/O extension module
- Possible connection of the external PRT series reader (two way door control)
- Tamper
- CE mark



PRT64EM-VP

EM 125 kHz outdoor vandal resist proximity reader, connecting cable 0.5 m, top part of reader's case and keys made with aluminium alloy and covered with silver-metallic coat, card reading distance up to 8 cm, mountable directly in a 60 mm gang box.



radius



PRT62EM

Miniature EM 125 kHz outdoor proximity reader, connecting cable 0.5 m.



dark grey



light grey



silver-metallic

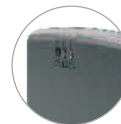
Available versions and symbols

Symbol	Description
PRT62EM-G	Dark grey case
PRT62EM-L	Light grey case
PRT62EM-S	Silver-metallic case



PRT66EM

EM 125 kHz outdoor proximity reader, bolted contacts, mountable directly in a 60 mm gang box.



dark grey



white



silver-metallic

Available versions and symbols

Symbol	Description
PRT66EM-G	Dark grey case
PRT66EM-W	White case
PRT66EM-S	Silver-metallic case



PRT12EM

EM 125 kHz outdoor proximity reader, connecting cable 0.5 m, silicone keypad with backlight, two function keys.



dark grey



light grey

Available versions and symbols

Symbol	Description
PRT12EM-G	Dark grey case, keypad
PRT12EM-L	Light grey case, keypad
PRT12EM-BK-G	Dark grey case, without keypad
PRT12EM-BK-L	Light grey case, without keypad
PRT12EM-G-B	Dark grey case, blue keypad backlight

DOMINO



PRT64EM

EM 125 kHz outdoor proximity reader, bolted contacts, silicone keypad with backlight, mountable directly in a 60 mm gang box.



dark grey



silver-metallic

Available versions and symbols

Symbol	Description
PRT64EM-G	Dark grey case
PRT64EM-S	Silver-metallic case

The PRTxxMF series readers is a group of access terminals which are designed for using with ISO/IEC 14443A and Mifare® cards.

Devices belonging to this series have identical functionality, and differences between them are limited only to operation environment, mechanical construction and style of casing. Each PRTxxMF reader can be used as standalone access control device or as a slave unit connected to the external controller. In first case PRTxxMF reader, based on the configuration settings, autonomously controls single door (entire logic is centralized in the reader itself). In second case, PRTxxMF reads card or PIN and then send data to access controller which takes further action.

The PRTxxMF series readers are equipped with programmable input and output lines. They can also cooperate with XM-2 type I/O expander, which provides two relay outputs and two NO/NC inputs. Using an XM-2 expander substantially improves a general security level of an access point being controlled, because it physically separates a decision point (reader) from the working element blocking the door (relay from XM-2 module). In standalone mode each PRTxxMF reader can operate in pair with second PRT series unit, this allows to control door on both sides (entry/exit). The PRTxxMF reader can be used as card programmer, however for this purpose the licensed version of RARC program is required.

Features:

- 12VDC supply
- 13.56 MHz Mifare cards
- Reads CSN, MSN or SSN number
- CSN, SSN and MSN card numbers
- Programmable data output format
- Formats: Wiegand 26-66bit, Magstripe (Clock and data), RS232, RACS (Roger) and others
- Various ways of PIN and keypad codes transmission
- LED and Buzzer controlled through separate inputs
- Outdoor/indoor installation
- Mifare card programming (required licensed version of RARC program)
- May operate as an offline standalone access controller
- Up to 120 indexed users with card and/or PIN (standalone mode)
- Authentication: Card and/or PIN
- Event log for 3000 transactions
- Built-in 1.5A/30V relay output (except: PRT62MF, PRT12MF and PRT12MF-BK)
- Two NO/NC inputs
- Two 150mA transistor outputs
- Operation with XM-2 I/O extension module
- Possible connection of the external PRT series reader (two way door control)
- Programmed manually or from PC
- Free managing software (RARC)
- Tamper
- CE mark





DOMINO

PRT12MF

ISO/IEC 14443A/Mifare® outdoor reader/writer, connecting cable 0.5 m, silicone keypad with backlight, two function keys.



dark grey



light grey

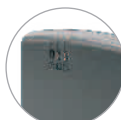
Available versions and symbols

Symbol	Description
PRT12MF-G	Dark grey case, keypad
PRT12MF-L	Light grey case, keypad
PRT12MF-BK-G	Dark grey case, without keypad
PRT12MF-BK-L	Light grey case, without keypad



PRT66MF

ISO/IEC 14443A/Mifare® outdoor reader/writer, bolted contacts, mountable directly in a 60 mm gang box.



dark grey



white



silver-metallic

Available versions and symbols

Symbol	Description
PRT66MF-G	Dark grey case
PRT66MF-W	White case
PRT66MF-S	Silver-metallic case



RADIUS

PRT62MF

ISO/IEC 14443A/Mifare® miniature outdoor reader/writer, connecting cable 0.5 m.



dark grey



light grey



silver-metallic

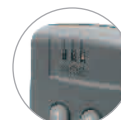
Available versions and symbols

Symbol	Description
PRT62MF-G	Dark grey case
PRT62MF-L	Light grey case
PRT62MF-S	Silver-metallic case



PRT64MF

ISO/IEC 14443A/Mifare® outdoor reader/writer, bolted contacts, silicone keypad with backlight, mountable directly in a 60 mm gang box.



dark grey



silver-metallic

Available versions and symbols

Symbol	Description
PRT64MF-G	Dark grey case
PRT64MF-S	Silver-metallic case

The PRxx1 series controllers are designed as the most popular and low cost access control solutions. They can be used either in standalone or integrated access systems for up to 1000 users. When used autonomously they do not offer time schedules nor buffering of events however when operating in system equipped with CPR32-SE network controller both mentioned features became available and are provided by this additional device. One CPR32-SE network controller can operate with up to 32 PRxx1 access controllers.

When communication with CPR32-SE is broken controllers automatically switch to standalone mode and continue operation with settings as they were when communication bus failure occurred. All PRxx1 units are equipped with RS485 interface which can be use for both programming and online communication in networked system. Access control system based on PRxx1 series controllers can be managed locally through COM/USB serial port or remotely by computer network WAN/LAN (UT-4 interface required).

Features:

- Built-in EM 125 kHz reader (PR611, PR611-VP, PR621 and PR311SE)
- Connection of one external reader (PR611, PR611-VP, PR621 and PR311SE)
- Connection of two PRT series readers and/or two Wiegand 26-66 bit readers (PR411DR)
- 12VDC supply (PR611, PR611-VP, PR621 and PR311SE)
- 18VAC or 12VDC supply (PR411DR)
- Built-in 1.5A buffered supply module (PR411DR)
- Three programmable NO/NC inputs (8 for PR411DR)
- Two programmable 1A transistor outputs
- One programmable 1.5A/30V relay output
- One programmable 1.5A/230VAC relay output (PR411DR)
- RS485 communication bus
- Free topology of communication bus (star or tree topology allowed)
- 1000 users
- Up to 8 "guest" type users on each controller in the system
- 99 time schedules (CPR32-SE required)
- 250 user groups (CPR32-SE required)
- 250.000 event buffer (CPR32-SE required)
- Local APB
- Global APB (CPR32-SE required)
- Alarm Zones (CPR32-SE required)
- Operation with XM-2 I/O extension module
- Integration with burglary system through I/Os
- Door operating modes: Normal, Locked, Unlocked, Conditional Unlocked
- User identification: Card or PIN, Card and PIN, Card only, PIN only
- Fast programming (15 seconds per each controller in system)
- Quick user editing (up to 3 seconds per each controller in system)
- Integration of multiple access networks in one system (up to 250)
- Multiple networks doesn't increase system programming time
- Outdoor installation (PR611, PR611-VP, PR621 and PR311SE)
- DIN RAIL 35mm enclosure (PR411DR)
- Tamper
- CE mark





domino

PR311SE

Outdoor access controller, built-in EM 125 kHz proximity reader, connecting cable 0.5 m, silicone keypad with backlight, two function keys.



dark grey

light grey

Available versions and symbols

Symbol	Description
PR311SE-G	Dark grey case, keypad
PR311SE-L	Light grey case, keypad
PR311SE-BK-G	Dark grey case, without keypad
PR311SE-BK-L	Light grey case, without keypad
PR311SE-G-B	Dark grey case, blue keypad backlight



PR411DR

NEW

Single door access controller, built-in 1.5A buffered power supply, operates with external readers (1 or 2), mountable directly in a DIN rail 35mm.



PR611

Outdoor access controller, built-in EM 125 kHz proximity reader, bolted contacts, silicone keypad with backlight, mountable directly in a 60 mm gang box.



dark grey

silver-metallic

Available versions and symbols

Symbol	Description
PR611-G	Dark grey case
PR611-S	Silver-metallic case
PR621-G	Dark grey case
PR621-W	White case
PR621-S	Silver-metallic case



PR621

Outdoor access controller, built-in EM 125 kHz proximity reader, bolted contacts, mountable directly in a 60 mm gang box.



dark grey

white

silver-metallic



PR611-VP

NEW

Outdoor vandal resist access controller, built-in EM 125 kHz proximity reader, connecting cable 0.5 m, top part of controller's case and keys made with aluminium alloy and covered with silver-metallic coat, card reading distance up to 8 cm, mountable directly in a 60 mm gang box.

The PRxx2 series controllers may operate as standalone access control units or in integrated access control system with CPR32-SE network controller. In standalone mode PRxx2 autonomously supervise two-way door passage and do not need to communicate with PC nor any other equipment, events are registered in their internal buffer and time related functions are managed by built-in real-time clock. For this mode connection to PC is necessary only for configuration and events download or for real-time events monitoring. When working in integrated access control system PRxx2 continuously exchanges data with CPR32-SE panel which collects events occurred in the access system in its internal buffer and is responsible for all global-type functions (e.g. anti-passback zones, alarm zones).

In case of communication failure PRxx2 controllers switch automatically to standalone mode and continue door passage control (without global functions). Events are registered in their internal buffer then.

Simultaneously to access control every PRxx2 controller can be used as a time and attendance terminal however the PR602LCD unit equipped with 4-line LCD display and a set of 4 programmable function keys is most adequate for this purpose. The PR402 may operate with two external access terminals whereas the PR302 and PR602LCD have built-in one prox./PIN reader and are capable to work with one external reader unit only. Access control system based on PRxx2 series controllers can be managed locally through COM/USB serial port or remotely by computer network WAN/LAN (UT-4 interface required).

Features:

- Two way, single door access controllers
- Built-in EM 125 kHz reader (PR302 and PR602LCD)
- Connection of one external reader (two way door control)
- Connection of two PRT series readers (PR402)
- Support for Wiegand, Magstripe, PRT (Roger) readers and others
- 12VDC supply (PR302, PR602LCD)
- 18VAC or 12VDC supply (PR402 only)
- Built-in 1.5A buffered supply module (PR402)
- Three programmable NO/NC inputs (4 on PR402)
- Two programmable 1A transistor outputs
- One programmable 1.5A relay output (2 for PR402)
- RS485 communication bus
- Free topology of communication bus (star or tree topology allowed)
- 4000 users
- 99 time schedules
- 250 user groups
- Built-in 32.000 event buffer
- Local APB
- Global APB (requires CPR32-SE in the system)
- Global Alarm Zones (requires CPR32-SE in the system)
- Operation with XM-2 I/O extension module
- 32 floor lift control (requires XM-8 I/O extension module)
- Integration with burglary system through I/Os
- Building automation through I/Os

- Door operating modes: Normal, Locked, Unlocked, Conditional Unlocked
- User identification: Card or PIN, Card and PIN, Card only, PIN only
- Two Persons, High Security and other advanced access options
- Quick user editing (less than 5 seconds per each controller in system)
- Management through Ethernet (LAN/WAN), USB or COM
- System can be divided into separate branches (networks, subsystems)
- Multiple networks doesn't increase system programming time
- Advanced Time and Attendance functions (PR602LCD)
- LCD display and 4 programmable function keys (PR602LCD)
- Outdoor installations (PR602LCD-O only)
- Tamper
- CE mark

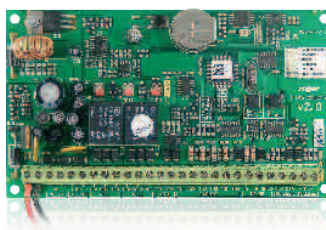


CLASSIC



PR302

Indoor access controller, built-in EM 125 kHz proximity reader, bolted contacts, silicone keypad with backlight, configurable by user into version without keypad.



PR402-BRD

Single-door access controller electronic module, built-in power supply with battery support, secondary supply output 12VDC/1A with overcurrent protection, cooperation with two external access readers, power supply 18-22VAC.

Available versions and symbols

Symbol	Description
PR402-BRD	Access controller electronic module (board)
ME-1	Metal enclosure for installation of 1 PR402 board (includes 40VA transformer)
ME-2	Metal enclosure for installation of 4 PR402 boards (ZMPR-1 required, includes 80VA transformer)
ZMPR-1	Set of two metal shelves and additional accessories dedicated to install up to four PR402 boards into single ME-2 metal enclosure
ME-2-S	Metal enclosure with 80VA transformer and ZMPR-1 assembly kit pre-prepared for installation of 4 PR402 modules

radius



PR602LCD

Outdoor access controller with advanced T&A functions, built-in EM 125 kHz proximity reader, connecting cable 0.5 m, silicone keypad with backlight, four programmable function keys, 4 line LCD display.

Available versions and symbols

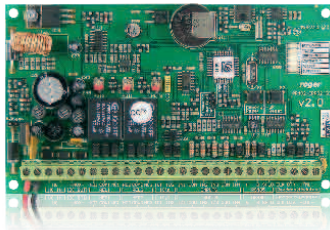
Symbol	Description
PR602LCD-I	Indoor version, bolted contacts
PR602LCD-O	Outdoor version, connecting cable 0.5 m

CPR32-SE Network Controller is an optional Roger Access Control System (RACS) component. Using CPR32-SE in the system expands its functionality with specific features. When used with PRxx1 series controllers CPR32-SE allows

- One CPR32-SE unit per single access network with up to 32 controllers
- Real time clock with battery back-up
- Event buffer (250.000)
- Programmable inputs/outputs
- Two 1.5A/30V relay outputs
- Two 1A/15V transistor outputs

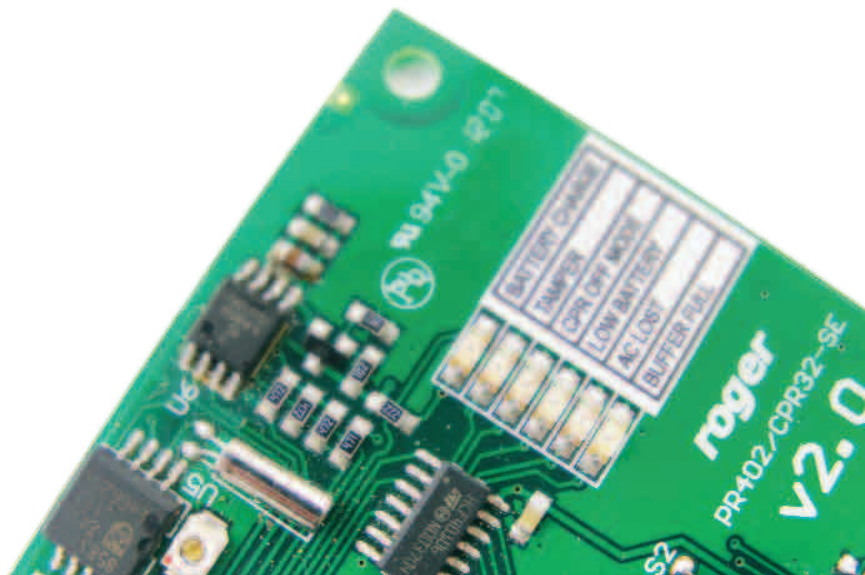
for logging events and defining time-based access rights, as well as to realize global type functions such as APB zones or alarm zones. In case of PRxx2 series controllers, CPR32-SE provides a global type functions only (APB, alarm zones).

- Four NO/NC inputs
- RS485 interface (free topology)
- Relay output for alarm states signaling
- Firmware upgrade
- 1.5A buffered power supply
- 18-22 VAC supply
- CE mark



CPR32-SE-BRD

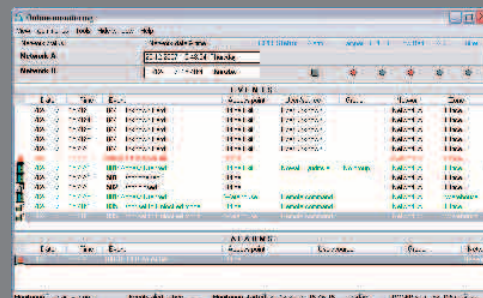
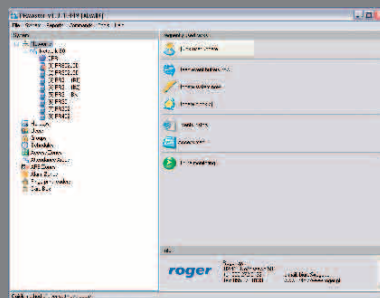
RACS 4 network controller module (board) without casing (metal case is offered separately, symbol ME-1).





The RACS software pack consists of several programs which are dedicated for administration and management of all aspects of RACS system.

- Support for all PRxx1 and PRxx2 access controllers
- Up to 32 controllers in single network
- Up to 250 networks integrated in one system
- Support for F7 and F10 fingerprint readers
- Communication with networks through serial port (COM, USB) or computer network
- Real-time events monitoring on local and remote computers
- Interactive commands to controllers
- Operator selectable filtering of events
- Online events reports to text files
- Support for online printer
- Event notifications via email
- Time and attendance recording
- Attendance reports in any user defined areas
- Visualization of working system on graphical background (object map)
- Configurable auto-backup
- Different access levels for program operators
- Paradox (BDE) database
- Export/import of database to XML format files
- OLE Automation SDK



Quick user update



Read event buffers now



Update system now



Update clock(s)



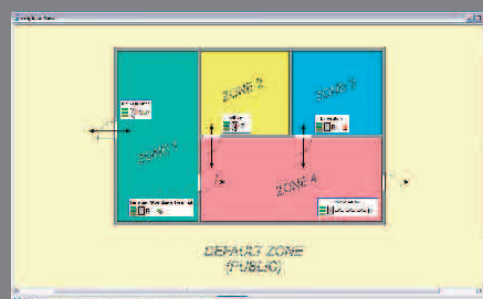
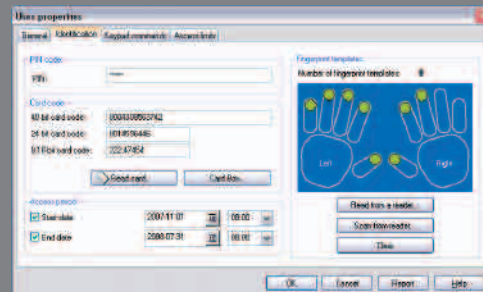
Events history



Access map



Online monitoring



RARC Software

RARC software is used for management of PRTxxEM/ PRTxxMF series readers. Basic version of the software allows for complete reader's configuration as well as for downloading events logged in its memory. This version is free. Extended version of the program allows for utilizing PRTxxEM and PRTxxMF series readers for proximity cards programming and requires purchasing a specific license (RARC-LICENSE).

Features:

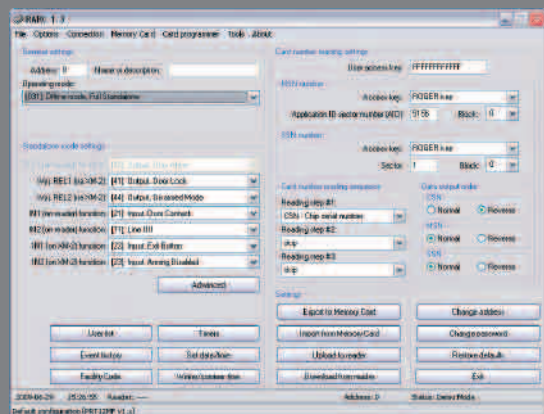
- Support for all the PRTxxEM/PRTxxMF series readers
- Programming 13.56 MHz ISO 14443A and Mifare® cards
- Programming EM 125 kHz Q5 cards
- Complete reader's configuration
- Events downloading and viewing
- User management
- Saving/reading reader's configuration settings to (from) external file
- Communication through RS232 interface (requires TXD, RXD and RTS lines)

RARC

Basic version of the program for PRTxxEM/PRTxxMF series readers management, distributed free of charge, does not require any license, can be downloaded from the Roger's Web Site at www.roger.pl

RARC-LICENSE

Licensed version of the RARC software allows for utilizing PRTxxEM series readers for programming EMC-4 cards and utilizing PRTxxMF readers for programming MFC-1, MFC-2 and MFC-3 cards. The license can be ordered by phone or through Internet.



CPK-1

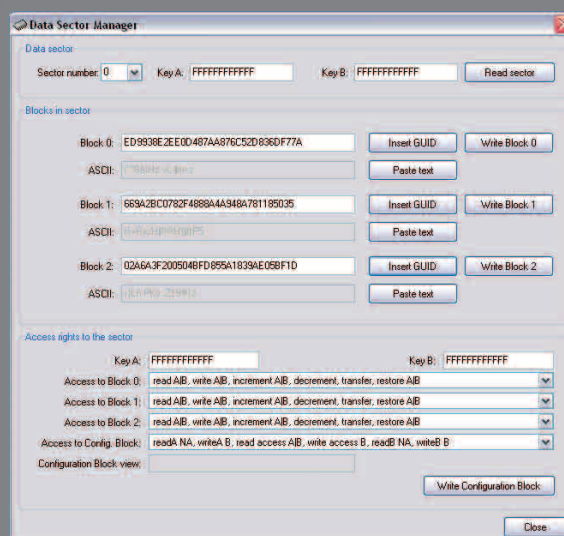
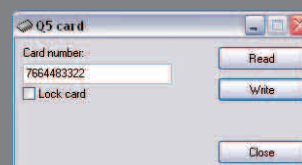
NEW

EM 125 kHz cards programming set. CPK-1 includes:
PRT66EM proximity reader, 10pcs. of not programmed Q5
proximity cards, RUD-1 communication interface, CD-ROM
with RARC software and license key.

CPK-2

NEW

13.56 MHz Mifare cards programming set. CPK-2 includes:
PRT66MF proximity reader, 10pcs. of not programmed
Ultralight proximity cards, RUD-1 communication interface,
CD-ROM with RARC software and license key.



RARC

Administrator's Reader

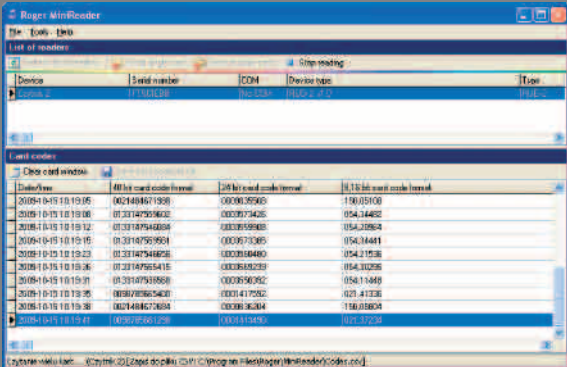


RUD-2

NEW

RUD-2 is a miniature, portable reader for EM 125 kHz proximity transponders. The reader is supplied from serial USB port which is also used for communication with the device. The RUD-2 can be used as a card enrolling reader for RACS. Besides it can also be utilized from the free Roger MiniReader software. There is also a Dynamic Link Library (DLL) available for programmers who want to integrate support for RUD-2 in their applications.

Support for RUD-2 readers can also be implemented in other programs by using dynamic library DLL. In this case, the logic of reader handling depends completely on the program's author.



ROGER MiniReader

Roger MiniReader application enables to read EM 125 kHz transponders codes through RUD-2 reader. The cards read can be saved to a text file (CSV format) or automatically copied to the clipboard, so the card codes can be easy moved to other applications.

Biometric Readers

**F7**

F7 biometric fingerprint reader identifies a user from up to 500 templates stored in its memory without use of a card or PIN. The F7 can be used as a slave reader connected to access controller or as a standalone access control point with built-in relay output for a door lock. The management of F7 reader can be carried out directly from RACS software or by dedicated configuration program through RS232/RS485 or Ethernet.

**F10**

F10 biometric fingerprint reader is dedicated for use in access control systems as a biometric identification point with up to 600 templates stored in its memory. The F10 can be used only as Wiegand26/34 bit reader connected to the external access controller. Reader can be programmed from RACS software or by dedicated program through RS232/RS485 or Ethernet.

NOTICE! Before using the fingerprint reader you need to verify whether the application of the device under particular conditions is consistent with applicable law.

Long Range Readers

**GP60**

Outdoor EM 125 kHz cards reader with extended reading range. Up to 60 cm reading range can be achieved when using EMC-3 cards. Reader is equipped with RS232, RS485, Wiegand26 and Magstripe (clock & data) output formats.

**GP90**

Outdoor long range EM 125 kHz cards reader. Up to 120 cm reading range can be achieved when using EMC-3 cards. Reader is equipped with RS232, RS485, Wiegand26 and Magstripe (clock & data) output formats.

Communication Interfaces

Communication interfaces are required for administration and management of the entire access control system from PC. They can be also used for access readers and controllers programming from PC.



RUD-1

NEW

RUD-1 is an universal, portable communication interface dedicated for Roger access control devices. Product has been designed for installers, which uses laptops for configuration and management of Roger access controllers and readers. RUD-1 is powered straight from the USB port and has built-in supply module which provides 12V voltage for programmed device.

RUD-1 can be used for:

- Communication with RACS access control system
- Configuration and management of PR series access controllers from PR Master software
- Configuration and management of PRTxxEM and PRTxxMF series readers from RARC software
- Firmware upgrade in PR series access controllers
- Firmware upgrade in PRTxxEM and PRTxxMF series readers
- In other applications as USB to RS485 converter



UT-2

RS232 to RS485 communication interface.



UT-3

RS232 to RS422 communication interface.



UT-2USB

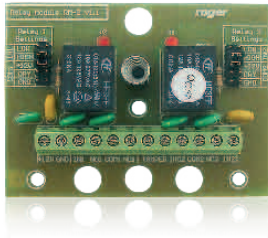
USB to RS485 communication interface.



UT-4

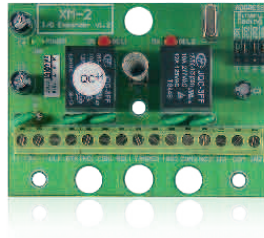
RS232/RS485/RS422 to Ethernet communication interface.

Expanders



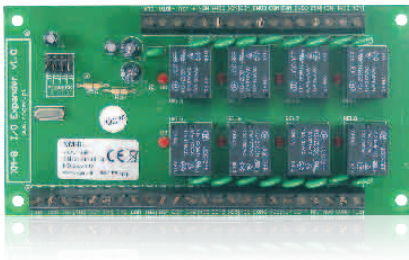
RM-2-BRD

Double relay module, 1.5A/30V load, triggering by 0 or 12V signal, electronic board only.



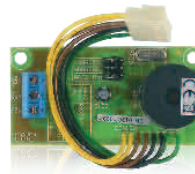
XM-2-BRD

Addressable input/output expander, two NO/NC inputs and two relay outputs, dedicated to work with PRxx1 and PRxx2 series controllers as well as with PRTxxEM and PRTxxMF series readers.



XM-8-BRD

Addressable input/output expander, eight NO/NC inputs and eight relay outputs, can be used with PRxx2 controllers as an elevator control module.



PSAM-1-BRD

Alarm module for PS series power supplies (PS10, PS20 and PS15v24). Device indicates battery failure, low battery level, lost of AC supply. Alarm can be indicated on transistor outputs or digitally transmitted to access controller.

EM 125 kHz



EMC-1

EM 125 kHz ISO size thin PVC proximity card, photo ID pictures and text printing possible with dedicated PVC printers.



EMC-2

EM 125 kHz ISO size thick (Clamshell) proximity card with printed number.



EMC-3

EM 125 kHz ISO size thick (Clamshell) proximity card with printed number, extended reading range.



EMC-4

EM 125 kHz ISO size thin PVC proximity card with Q5 chip, EEPROM 264 bits, the card number (CSN) can be programmed by any PRTxxEM series readers running under RARC software (Windows), card can be used with PVC printers, photo ID pictures and text printing possible.



EMKF-1

EM 125 kHz key fob, reading range may be reduced by approx. 50% when using the fob versus the card.



MFC-1

13.56 MHz Mifare ISO size thin PVC card with printed number, photo ID pictures and text printing possible with dedicated PVC printers, 64 bytes memory.



MFC-2

13.56 MHz Mifare ISO size thin PVC card with printed number, photo ID pictures and text printing possible with dedicated PVC printers, 1k bytes memory.



MFC-3

13.56 MHz Mifare ISO size thin PVC card with printed number, photo ID pictures and text printing possible with dedicated PVC printers, 4k bytes memory.

13.56 MHz MIFARE®



MFKF-1

NEW

13.56 MHz Mifare Ultralight key fob.



MFKF-2

NEW

13.56 MHz Mifare 1kB key fob.



MFKF-3

NEW

13.56 MHz Mifare 4kB key fob.

Overprint with personalization

It is possible to put on cards a graphical customization (picture), name, ID number, barcode, etc. according to design delivered by customer. The possibility to make custom print is offered on proximity cards made of PVC with ISO dimensions (85mm/54mm) and the thickness of 0.8 mm (cards EMC-1, EMC-4, MFC-1, MFC-2, and MFC-3). It is possible to make two kinds of print:

- thermosublimation printing - color
- thermotransfer monochrome printing - black

Offset overprint**NEW**

We offer also possibility to order proximity cards with high quality color overprint without personalization. Each inquiry related to this type of printing is considered individually. You can find more information at www.roger.pl.





CP-1

Horizontal card punch with hole, ISO standard size.



CP-2

Horizontal card punch with hole, extended durability, ISO standard size.



CP-3

Vertical card punch with hole, extended durability, ISO standard size.



CH-1

Durable plastic card holder, vertical or horizontal use, ISO standard size.



BC-1

Badge clip for photo ID cards, metal clip with plastic band and metal snap.



NC-1

Neck chain with silver finish, length: 91cm.



NL-1

Neck lanyard, flat 15mm width band, blue color, length: 80cm.



NL-2

Neck lanyard, flat 15mm width band, blue color with Roger logo, length: 80cm.



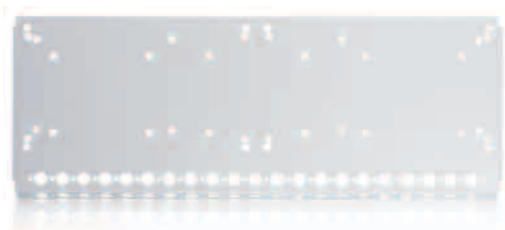
ME-1

Metal enclosure for PR402 access controller or CPR32-SE network unit, includes 40VA transformer, key lock available on request (symbol: F4708022/802).

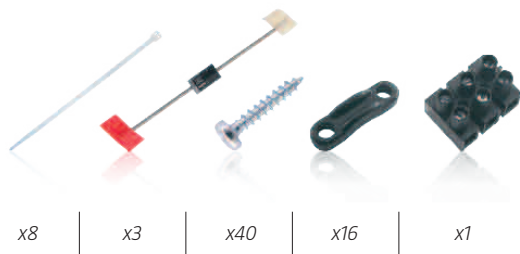


ME-2

White color metal enclosure with 80VA transformer dedicated for use with ZMPR-1 installation kit, up to four PR402 or six PR302/301 boards can be assembled in this case using ZMPR-1, also other combinations of PS and XM modules available using this set.



x2



x8

x3

x40

x16

x1

ZMPR-1

Set of two metal shelves and additional accessories dedicated to install up to four PR402 boards and/or other RACS modules into single ME-2 metal enclosure.

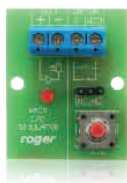


ME-2-S

NEW

Metal enclosure with 80VA transformer and ZMPR-1 assembly kit pre-prepared for installation of 4 PR402 modules.

Modules and battery shown in the photo are not included in the ME-2-S kit.



IOS-1

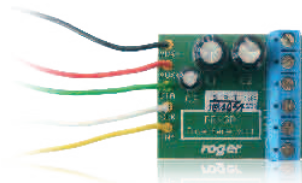
NEW

I/O simulator that allows simulation of input signals (door contact, exit button etc.) and visualization of output signals (door lock, alarm signaling, current arming mode etc.).



PE-1

Plastic case for XM-2 and RM-2 modules.



PR-GP-BRD

Adjusting-separation module used for connecting F7, F10, GP60, GP90 readers (and other third-party readers) to PRxx2 series controllers, adjusts output signals' logical levels to controller's input lines, separates readers' input lines so that they can not interfere with each other.



F4708022/802

Mechanical lock designed for mounting in metal case ME-1.



KWS1K

An attachment for screws fixing SL2000S1K code lock's keypad. Screws are non-standard so that unauthorized demounting is made difficult.



EP 7-12

Battery 7Ah/12V.

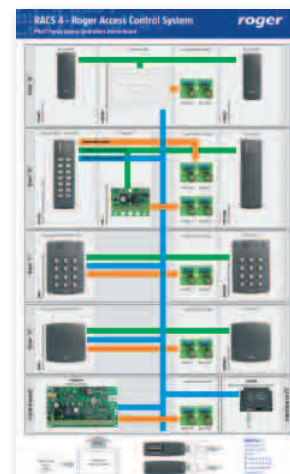
DB-1

NEW

Demonstration/training system for PRxx1 series controllers. A set of controllers and readers has been mounted on the 100x60x3cm board and connected together to form a sample networked access control system consisted of 4 bidirectional passages. DB-1 system can be used for training ACS installers and designers, as well as for presentation the system at end-users premises.

Available versions and symbols

<i>Symbol</i>	<i>Description</i>
DB-1-PL	Demonstration board with PRxx1 series controllers, Polish version
DB-1-EN	Demonstration board with PRxx1 series controllers, English version
DB-S	Portable stand (together with case) for demonstration board
DB-S-ST	Stationary stand for demonstration board



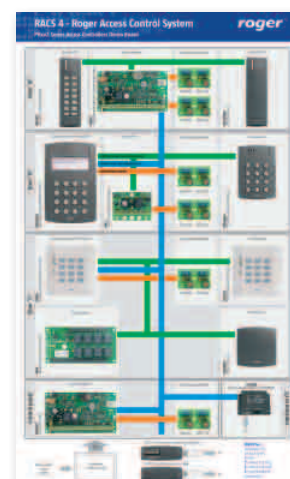
DB-2

NEW

Demonstration/training system for PRxx2 series controllers. A set of controllers and readers has been mounted on the 100x60x3cm board and connected together to form a sample networked access control system consisted of 3 bidirectional passages. DB-2 system can be used for training ACS installers and designers, as well as for presentation the system at end-users premises.

Available versions and symbols

<i>Symbol</i>	<i>Description</i>
DB-2-PL	Demonstration board with PRxx2 series controllers, Polish version
DB-2-EN	Demonstration board with PRxx2 series controllers, English version
DB-S	Portable stand (together with case) for demonstration board
DB-S-ST	Stationary stand for demonstration board



DB-3

NEW

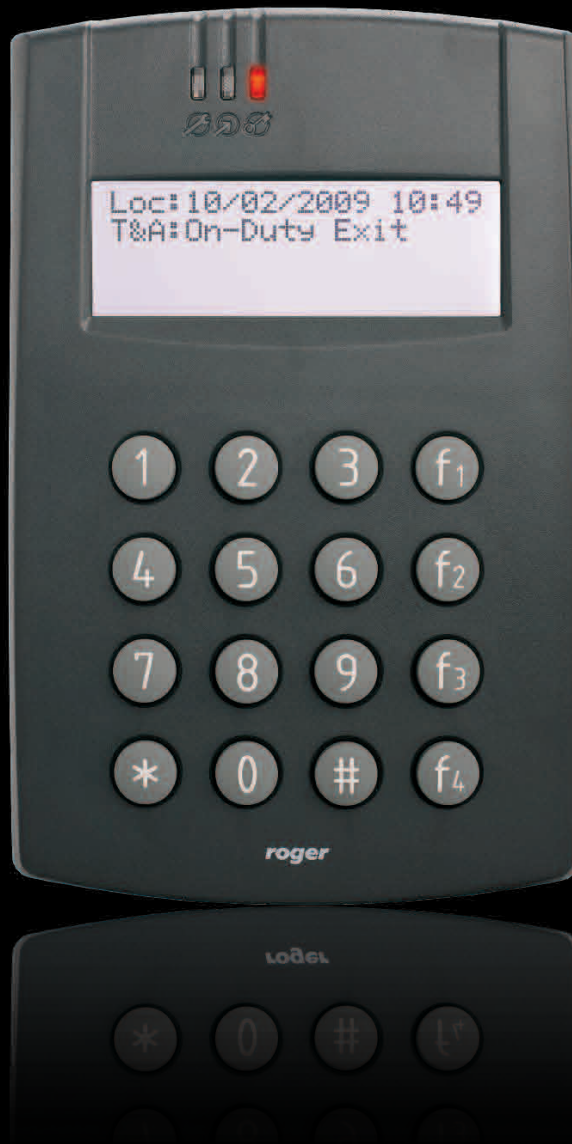
A board demonstrating the Roger company's offer in the field of Access Control Systems. Dummy devices together with description of equipment's most important features have been placed on the board of dimensions 100x60x3cm. The DB-3 can be useful in merchant posts and showrooms offering Roger products as well as for presenting RACS for potential customers interested in installation Roger Access Control System at their premises.

Available versions and symbols

<i>Symbol</i>	<i>Description</i>
DB-3-PL	Access control devices presentation board, Polish version
DB-3-EN	Access control devices presentation board, English version
DB-S	Portable stand (together with case) for demonstration board
DB-S-ST	Stationary stand for demonstration board



Time and Attendance





The **RCP Master** allows for creation of worktime and attendance reports based upon the event log imported from CSV and XML text file formats. The employee worktime (attendance time) is calculated according to the specific rules defined by the program operator, taking into account defined earlier worktime calendars.

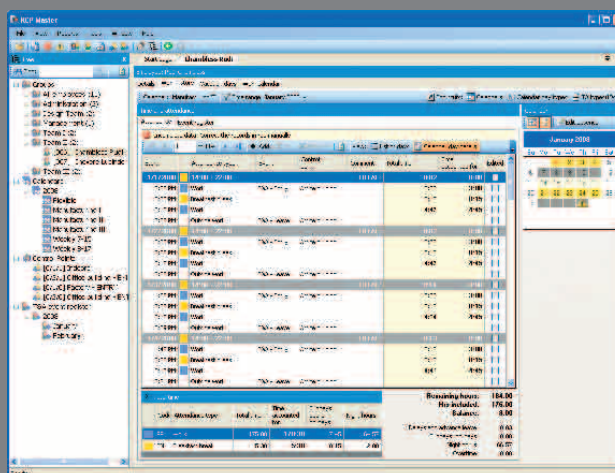
Features:

- Importing events log from RACS v 4.2.5.38 and above
- Importing events log from CSV and XML text file formats
- Exporting reports in the Adobe Acrobat (.pdf), Microsoft Excel (.xls), Microsoft Word (.doc), Rich Text Format (.rtf) and Crystal Reports (.rpt) file formats
- Exporting worktime/attendance reports in XML
- Definition of calendar days: workday, additional workday, holiday, day off, etc.
- Definition of attendance and absence types: leave, unjustified absence, lunch break, etc.
- Definition of maximum and minimum time of presence (i.e. maximal daily cigarette break limit, minimal worktime, etc.)
- Additional options related to late-comings, early exits, inclusion the time worked before and after usual worktime hours, etc.
- Definition of pass types: entrance, exit, duty exit, etc.
- Definition of program operators and their privileges
- Possibility to correct and insert missing T&A events and to modify absences
- Definition of holiday limits and report of their usage
- Individual worktime calendars with the possibility to correct calendar for the specific employee — i.e. working in different time, changeovers, etc.
- Support for rounding up the time of beginning and finishing the work
- Support for payable and unpayable breaks
- Support for overtime work
- Reports: Employee Groups, Employees, Calendars, Access Points, T&A Event Log, Worktime, Leave Limits, Individual Calendars, etc.
- Possibility to create any set of reports with the Report Wizard— summary reports for the whole group as well as reports for individual employees
- Possibility to automatically send individual reports by e-mail to the employee e-mail address
- Operator activity log
- Support for relational database in MS Access file format
- Possibility to use local database or database shared through the network
- Possibility to define password for access to the database file
- Possibility to encrypt the database file
- Support for compacting and repairing the database file
- Possibility to manipulate the database from any external program (i.e. own implementation the procedure of adding new events from external system)
- Operating systems: Windows XP and Vista
- Free upgrade within the same program version



PR602LCD

For worktime logging purposes the Roger company recommends use of PR602LCD controller. This controller is equipped with 4-line LCD display and a set of 4 programmable function keys, which can be used as register type choice buttons (entrance, exit, on-duty exit, etc.). The PR602LCD is equipped also with a built-in event buffer and can work in a standalone or in a networked access control system of RACS type (Roger).



Guard Tour System





PATROL II LCD is a portable proximity transponders reader designed for tracking persons attendance in designated points of building or area. The device is designed mainly for verification of guards routes. Nevertheless it can be used in many other situations where there is a need to control people attendance in remote locations. PATROL installation is as simple as mounting proximity checkpoints in specific building or area locations and configuring the reader. Every checkpoint and person identifier can be assigned with names (labels). These labels can later significantly improve interpretation of registered events history.

Features:

- Operates with EM 125 kHz proximity cards and tags
- LCD display with backlight
- Non-volatile 32.000 event log buffer
- Guard tour, alarms and maintenance events
- Non-erasable event register (reconstruction of events cancelled

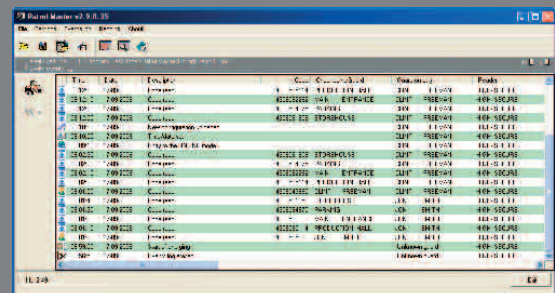
intentionally)

- Displays guard and checkpoint names
- Displays guard tour schedule hints
- Communication through USB port
- Battery charging from PC's USB or AC charger
- Supply from two LR6 (AA) batteries
- Resistant to humidity and water condensation
- Simple and intuitive operation with a single key
- Up to 8K reads cycles without battery charging (*)
- High mechanical durability - shock resistant for 1.5m free falling (*)
- Set includes: reader, USB cable, two AA 1.5V rechargeable batteries, leather case, battery charger, PK-1 checkpoint (1pc.), PK-2 checkpoint (5pcs.), EMC-1 proximity card (3pcs.), CP-1 card case (3pcs.)
- Programming and maintenance from computer through USB
- Free windows managing software
- Free upgrades of the reader's firmware via USB
- Warranty and non-warranty service
- Possibility to customize the device
- CE mark

(*) – Parameters pointed with star can be achieved when some particular conditions (specified in "User manual") are fulfilled



Patrol II LCD



Patrol Master



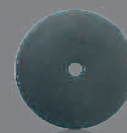
Patrol II LCD set:

- Reader
- USB cable
- Two batteries AA 1.5V
- Leather case
- Battery charger



PK-1

Proximity checkpoint, outdoor use, can be mounted on a metal base.



PK-2

Proximity checkpoint, circle shaped with a mounting hole in the centre, can be mounted on the wall or under the wall, indoor use.

Security



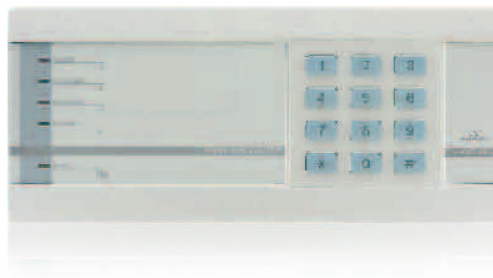
Telephone dialers make possible to automatically send information about emergency conditions (fire, break-in, etc.) to programmed telephone subscribers. Recipient is notified by verbal message recorded earlier and possibly by digital

transmission to alarm monitoring station. Dialers made by Roger can also be used as a small anti-burglary control panel with possibility to monitor three alarm lines and outputs for signaling devices such as siren/buzzer.



DIAL07M

- Recording one 24-second long verbal message
- Recording of two verbal messages (3 sec long) about an on/off state of the inspection mode
- Notification of up to eight telephone subscribers
- Notification of up to two pager subscribers
- One momentary alarm input
- One alarm input with delay
- Separate input line for switching inspection mode remotely
- Alarm signaling output
- Output for signaling telephone line failure
- Possibility to call telephone dialer from outside in order to get verbal information about inspection state



DIAL09

- Sending information to two alarm monitoring stations
- Sending information to two pager subscribers
- Sending information to up to eight subscribers notified by a verbal message
- One 24-second long alarm message or two messages 11-second long each
- In case of work with two messages, a content of message being sent depends on the line the alarm was initiated from
- Two messages (3 sec long each) about a current inspection mode (inspection on/off)
- Remote, encrypted access to verbal information about dialer's inspection state
- Remote and local control of programmable outputs
- Remote alarm message receipt
- Remote alarm action deletion and arming/disarming dialers
- Set of control codes of different permissions
- Three programmable alarm inputs of NO/NC type
- Two programmable outputs of open collector type
- Telephone line supervising
- Supervising connection with alarm monitoring stations
- Possibility for programming manually or from a PC



UT-1

RS232-TTL communication interface for programming DIAL09 dialer from a PC.

PS series power supplies are utilizing pulsed mode of power conversion and are adopted for operation with reserve batteries. All models are protected from overload and disconnect battery when discharged.

PS supplies can be used as power source for electronic equipment (controllers, readers etc.) or for actuators (door locks, motor locks, magnetic locks, etc.).



PS10

13.8V/1.2A output, place for 7Ah/12V battery.



PS20

13.8V/2A output, place for 7Ah/12V battery.



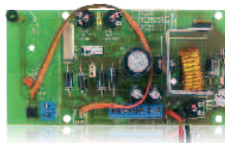
PS15v24

27.6V/1.5A output, place for two 7Ah/12V batteries.



PS10-BRD

Switched mode power supply module, input 18-22VAC, output 1.2A/13.8V, operation with 7Ah/12V battery.



PS20-BRD

Switched mode power supply module, input 18-22VAC, output 2A/13.8V, operation with 7Ah/12V battery.



PS15v24-BRD

Switched mode power supply module, input 32-36VAC, output 1.5A/27.6V, operation with two 7Ah/12V batteries.

The ASP sirens offer acoustic and light alarm indication. Both units are equipped with tamper detection circuit which indicates detachment from the wall as well as attempt to open the siren's enclosure.

Moreover, the ASP110S may indicate lack of the external supply. Both: sound and light, are controlled by separate inputs. Acoustic alarm can be selected from five types of sound modulations.



ASP110LC

- 12V DC external supply
- 110db/1m sound level
- LED/2Hz pulsed alarm light



ASP110S v2.0

- 12V DC external supply
- 110db/1m sound level
- LED/2Hz pulsed alarm light
- Reserve battery 1.2A/12V (optional)
- Timer for siren

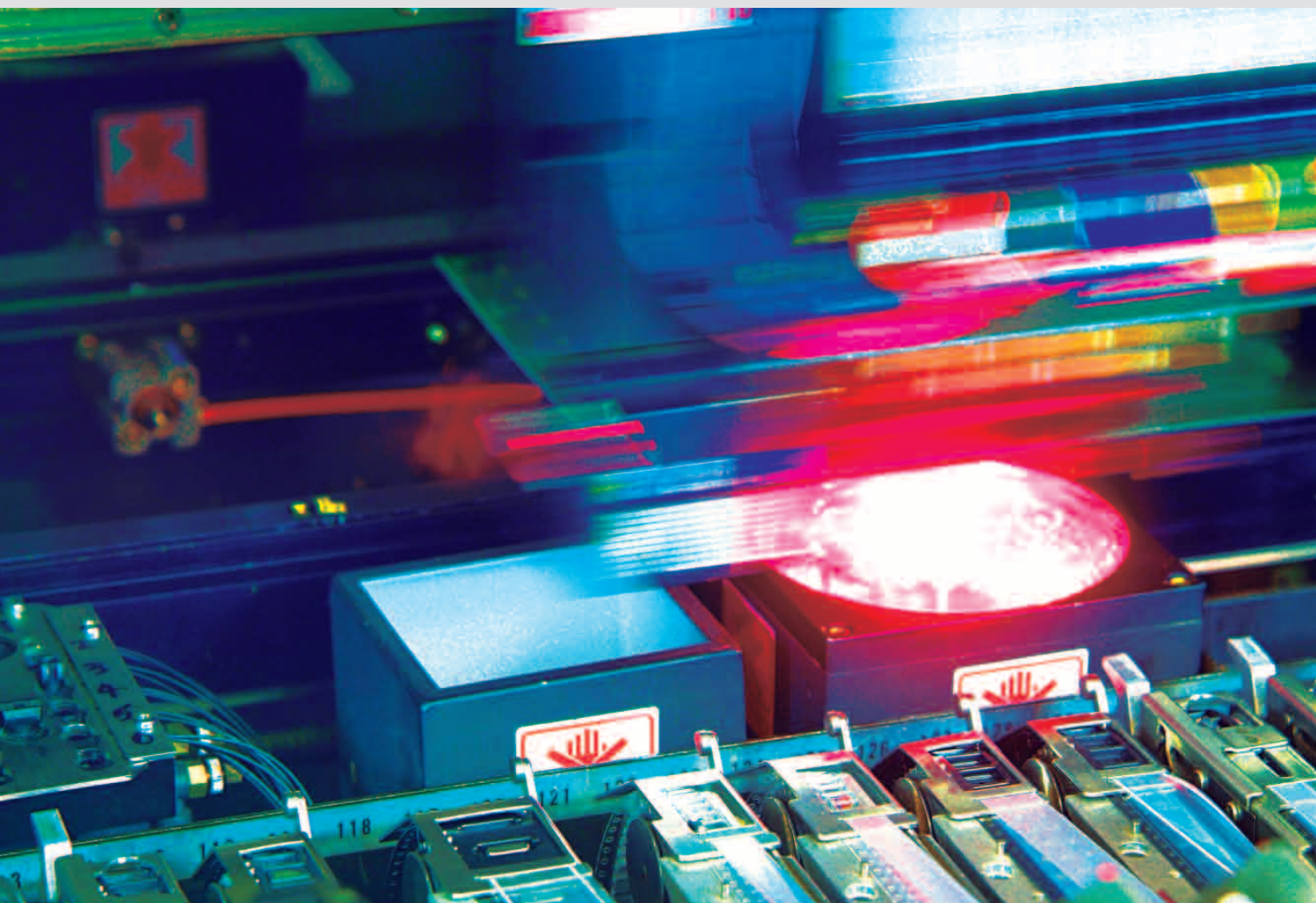
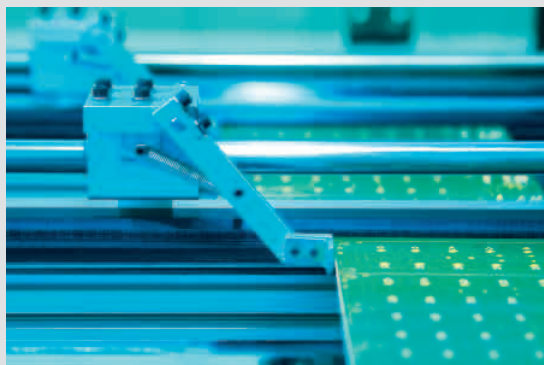
Scope of offered services

- Electronic Manufacturing Service
- OEM Assembly
- SMT Assembly
- Manual Solder Assembly
- Engineering & Testing Solution
- Flooding with resin masses
- Tampon printing
- CNC details processing
- Marking with labels



PCBA/EMS characteristic

- Full process Electronic Manufacturing Service
- SMT and through-hole
- PCB boards 457 x 407 mm
- 0402, 0603, 0805, 1210 and 2512 placement
- Two fully automated SMT assembly lines
- PHILIPS TOPAZ/COMET/CSM94 assembly machines
- EKRA automatic online screen printer
- MVP 1820 Ultra AOI optical inspection machine
- MVP 1820 AOI optical inspection machine
- Two SMT 460 reflow ovens
- Experienced components sourcing team
- Professional engineering staff to provide technical support
- Handwork package
- OEM and ODM services welcome
- Small orders accepted



Aside from versions catalogued in this document, devices manufacturer — ROGER offers manufacturing special devices versions (OEM) made according to customer specification. Depending on the specific device, it is possible to order custom connecting cable length, printing logo on the device's case, changing keypad backlight color, manufacturing case with non-standard color, modifications in device's

software and other changes specific to customer expectations. Each case of non-standard manufacturing requires submitting individual quote and may require one-time cost for preparing necessary instrumentation or documentation. Average time for satisfying orders containing products in special versions falls within the range from 4 to 8 weeks.





1. Professional Access Control



2. Comprehensive Time & Attendance Solutions



3. Professional Access Control
and Time & Attendance Solutions



4. Recording of Inspection Rounds and Field Actions

Notes

To learn more about ROGER's offer please visit us at www.roger.pl

NEW

The webpage provides:

- Presentation of complete offer which enables quick and easy access to all products.
- Access to newest descriptions of all products and services.
- User friendly functionality: access to each product website by double-click method, expanded search mechanism, downloads connected to particular product website, related articles feature, presentation of various versions of products, screenshots galleries, products as solutions, and many more.
- Direct technical support provided by **Frequently Asked Questions** section. FAQ section is a set of answers to most popular questions, that our technical support department meet with. Section is continuously updated and expanded with new topics and themes.
- Complete downloads base.
- Direct communication with ROGER company through thematic contact forms. By using these forms it's possible to send a feedback regarding products and services, ask a technical question or send an inquiry.
- Access to additional materials for registered users.
- And many, many more...





roger[®]

ROGER sp.j.
82-400 Sztum
Gościszewo 59
Poland

T. +48 55 272 0132
F. +48 55 272 0133
E. roger@roger.pl
www.roger.pl