



24" Wide LCD Monitor

User Manual

Model : L240w

Agency Regulatory Notices

U.S.FEDERAL COMMUNICATIONS COMMISSION RADIO FREQUENCY INTERFERENCE STATEMENT INFORMATION TO THE USER

NOTE : This equipment has been tested and found to comply with the limits for a Class B digital device pursuant to Part 15 of the FCC Rules.

These limits are designed to provide reasonable protection against harmful interference in a residential installation.

This equipment generates, uses, and can radiate radio frequency energy and, if not installed and used in accordance with the instructions, may cause harmful interference to radio communications.

However, there is no guarantee that interference will not occur in a particular installation.

If this equipment does cause harmful interference to radio or television reception, which can be determined by turning the equipment off and on, the user is encouraged to try to correct the interference by one or more of the following measures:

- **Reorient or relocate the receiving antenna.**
- **Increase the separation between the equipment and receiver.**
- **Connect the equipment into an outlet of a circuit different from that to which the receiver is connected.**
- **Consult the dealer or an experienced radio/TV technician for assistance.**

Changes or modification not expressly approved by the party responsible for compliance could void the user's authority to operate the equipment.

Connecting of peripherals requires the use of grounded shielded signal cables.



24" Wide LCD Monitor

User Manual

Model : L240w

Contents

1. Introduction.....	1
2. Safety Information.....	1
Cleaning and Maintenance	3
3. Installing the monitor.....	4
3-1. Packing List	4
3-2. Selecting a suitable location.....	5
3-3. Connecting the PC	5
3-4. Setting the refresh rate.....	7
3-5. User's Environment	9
4. Adjusting the picture.....	11
4-1. Using the On Screen Display	12
4-2. Direct access buttons.....	12
4-3. OSD Adjustments	13
5. Display power management	17
Reducing power consumption.....	17
6. Troubleshooting	18
Contacting service	20
7. Specifications	21



24" Wide LCD Monitor

User Manual

Model : L240w

1. Introduction

This manual contains instructions for installing and operating the HP Compaq L240w.

HP Compaq L240w is a highly ergonomic color display unit.

- 24" viewable WUXGA LCD
- High quality screen re-scaling capability
- 100-240V AC input voltage
- VESA DDC 1/2B compatibility
- Advanced digital On-Screen-Display controls
- Digital Signal Input by DVI-1.0 Compatibility
- Fast and accurate auto adjustment
- Most advanced image scaling
- Supporting VESA Flat Panel Monitor Physical Mounting Interface

2. Safety Information

This monitor has been engineered and manufactured to assure your safety. You can prevent serious electrical shock and other hazards by keeping in mind the following:



Do not place anything wet on the monitor or the power cord. Never cover the ventilation openings with any material and never touch them with metallic or inflammable materials.



24" Wide LCD Monitor

User Manual

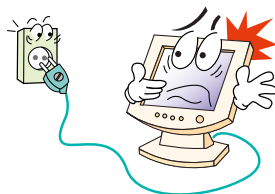
Model : L240w

2. Safety Information (continued..)

Avoid operating the monitor in extreme heat, humidity or areas affected by dust.

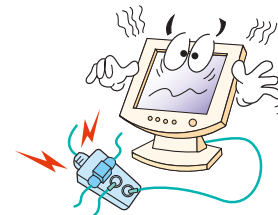
Temperature : 5~35°C

Humidity : 30~80RH



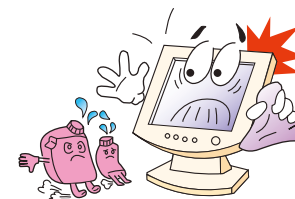
Be sure to turn the monitor off before plugging the power cord into the socket. Make sure that the power cord and the other cords are securely and correctly connected.

Overloaded AC outlets and extension cords are dangerous, as are frayed power cords and broken plugs, which may cause electric shock or fire. Call your service technician for replacement.



Do not use sharp tools such as a pin or a pencil near the monitor, as they may scratch the LCD surface.

Do not use a solvent, such as benzene, to clean the monitor, as it will damage the LCD surface.



The equipment shall be installed near the socket-outlet and shall be easily accessible.



24" Wide LCD Monitor

User Manual

Model : L240w

Cleaning and Maintenance

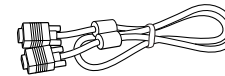
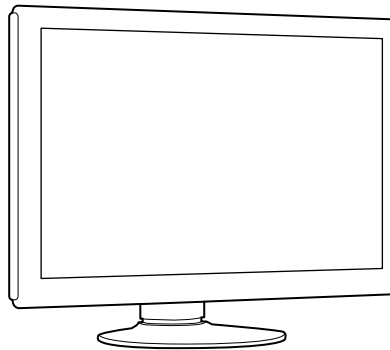
- To avoid to risk of electric shock, do not disassemble the cabinet of display unit. The cabinet is not user-serviceable. Remember to unplug the display unit from the power outlet before cleaning.
- Do not use alcohol (methyl, ethyl or isopropyl) or any strong dissolvent.
- Do not use thinner or benzene, abrasive cleaners or compressed air.
- Do not wipe the screen with a cloth or sponge that could scratch the surface.
- To clean your antistatic screen, use water and a special microfiber screen cleaning tissue used in optical lens cleaning, or lightly dampen a soft, clean cloth with water or a mild detergent.
- If the instructions above do not help in removing stains, contact an authorized service agent.



24" Wide LCD Monitor User Manual Model : L240w

3. Installing the monitor 3-1. Packing List

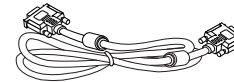
The following items should be found in the packaging.



Signal Cable



Power Cord



DVI Cable



Cleaning cloth



CD-ROM / Sheets / Cards



Other power cord except the cord packed in the product may affect EMC of the product in operating condition.



24" Wide LCD Monitor

User Manual

Model : L240w

3-2. Selecting a suitable location

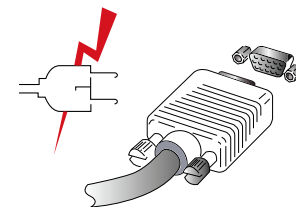
- Place the monitor at least 1 ft from other electrical or heat-emitting equipment and allow at least 4 inch on each side for ventilation.
- Place the monitor in a position where no light shines directly onto or is reflected on the screen.
- To reduce eye strain, avoid installing the display unit against a bright background such as a window.
- Position the monitor so that the top of the screen is no higher than eye level.
- Position the monitor directly in front of you at a comfortable reading distance (around 18 to 35 inch).

3-3. Connecting the PC

- 15 pin D-sub / DVI-D



Before you start cabling your monitor, check that the power is off on all units. To avoid any possibility of electric shock, always connect your equipment to properly earthed outlets.



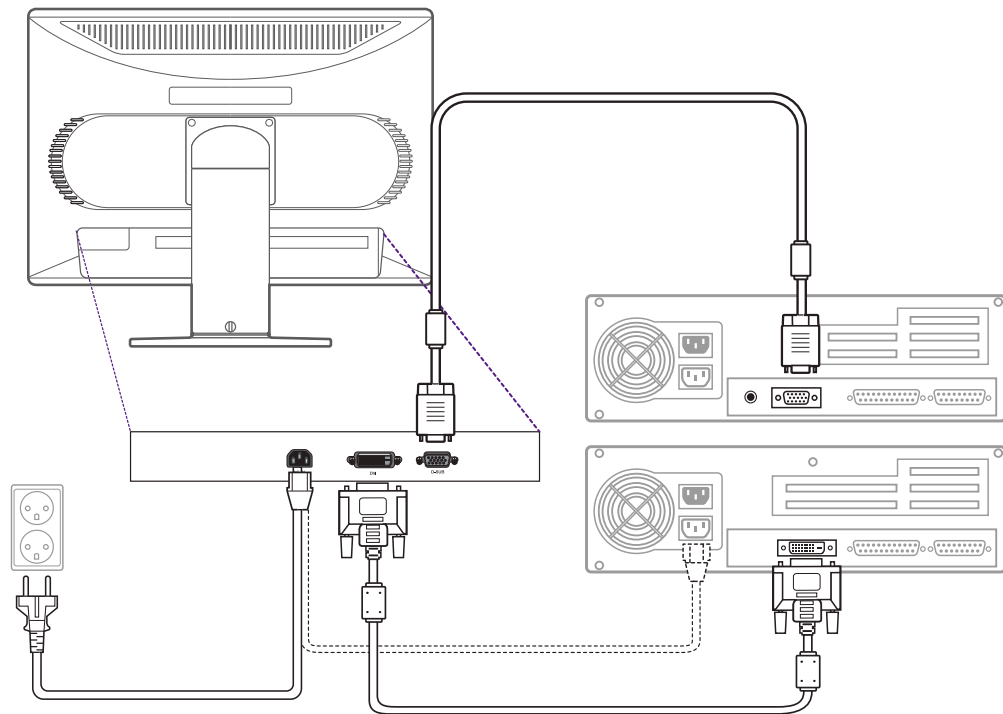
1. Connect the VGA or DVI signal cable connector into the monitor's VGA or DVI connector and the other end into the 15-pin VGA/DVI-D connection on your computer and screw it down.
2. Plug the power cord into the power connector on the monitor.
3. Plug the other end of the power cord to your computer's main supply or to a 100V-240V earthed electrical outlet.
4. Turn on the monitor using the power switch and check that the power LED is on. If not, repeat steps 1,2,3 and 4 or refer to the Troubleshooting section of this guide.



24" Wide LCD Monitor User Manual Model : L240w

- **Way to Connect**

5. Turn on the power to the computer. The picture will appear within about 10 seconds. Adjust the picture to obtain optimum picture quality. See section adjusting the picture in this guide for more information.





24" Wide LCD Monitor

User Manual

Model : L240w

3-4. Setting the refresh rate

Follow the instructions below to set your refresh rate in your Microsoft Windows 98/ME/XP/2000/VISTA/7 operating system.

1. Go to the Windows Control Panel.
2. Double-click on Display Settings.
3. Click on the Advance Settings tab.
4. Click on the Monitor tab.
5. Click on Select Refresh and choose 60Hz from the list.
6. Click on Apply to accept the selected value.

<Soft Power off>



<Off Mode>



<On Mode>





24" Wide LCD Monitor

User Manual

Model : L240w

- Preset Timing Table



If the signal from the system doesn't equal to the preset timing mode, adjust the mode with reference to the user guide of video card because the screen may not be displayed.

No.	Resolution	H-Freq.(KHz)	V-Freq.(Hz)	Supported Mode	
				Analog	DVI
1	720 x 400	31.4	70	•	•
2	640 x 480	31.4	60	•	•
3	640 x 480	37.5	75	•	•
4	800 x 600	35.1	56	•	
5	800 x 600	37.8	60	•	•
6	800 x 600	46.8	75	•	•
7	832 x 624	49.7	75	•	•
8	1024 x 768	48.3	60	•	•
9	1024 x 768	56.4	70	•	
10	1024 x 768	60.0	75	•	•
11	1152 x 864	67.5	60	•	•
12	1280 x 960	60.0	60	•	•
13	1280 x 1024	63.9	60	•	•
14	1280 x 1024	79.9	75	•	•
15	1440 x 900	55.9	60	•	•
16	1680 x 1050	64.7	60	•	•
17	1920 x 1080	67.5	60	•	•
18	1920 x 1200	74.0	60	•	•



*1600x1200, 1920x1200 resolutions can not set the horizontal frequency of 75Hz.



24" Wide LCD Monitor

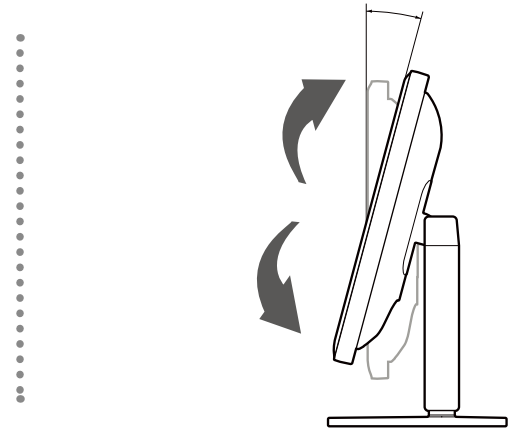
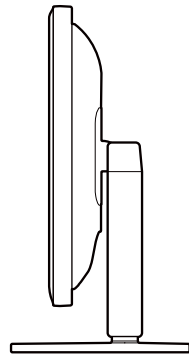
User Manual

Model : L240w

3-5. User's Environment

Recommended Ergonomic User's Environment.

- Viewing angle of the monitor should be between 0~30 degree.



- Supports Pivot.



The screen can be vertically rotated by 90 degrees.

This reduces the inconvenience of having to drag scrollbars and roll mouse wheels when working with documents or surfing the web.

* In case that pivot function is not supported from the graphic card in your pc, you could use pivot function by downloading the program through internet.



24" Wide LCD Monitor

User Manual

Model : L240w

**Kensington Security
(Locking) Slot**

VESA MOUNTING

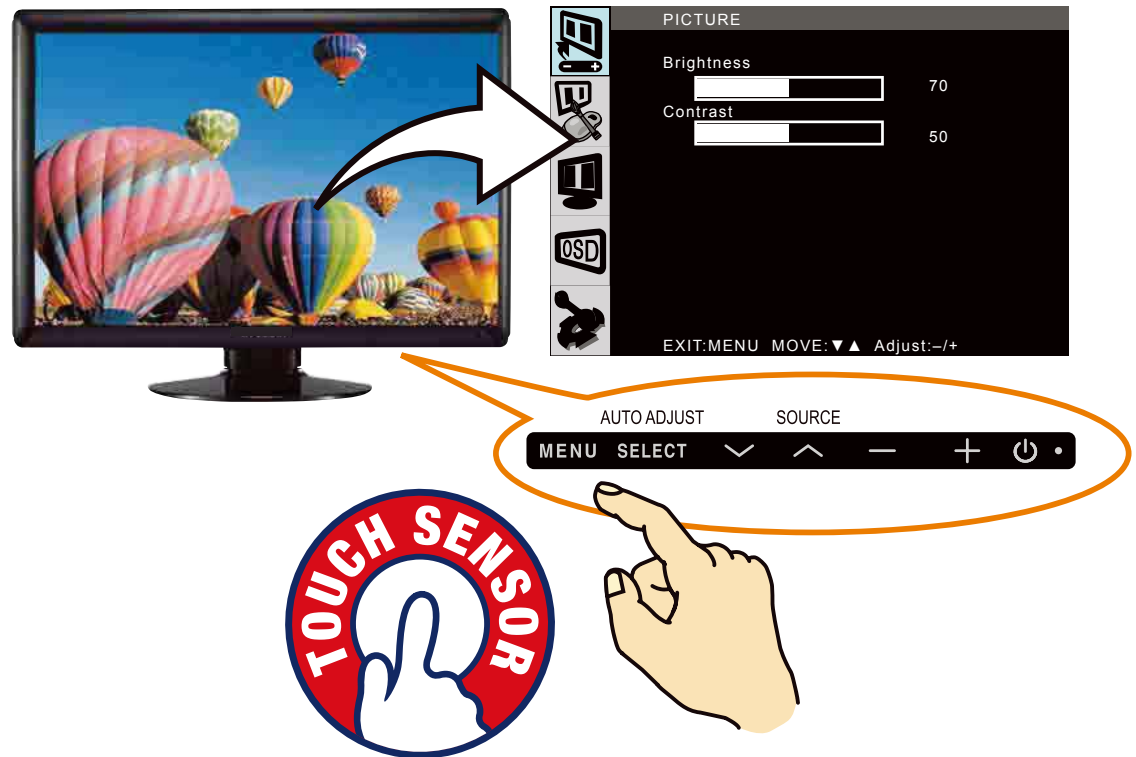
- This display unit supports an HP Business PC Security Lock Kit to secure your monitor. HP Business PC Security Lock Kit sold separately and is not included.
- This display unit support VESA mount standard for 100mm x 100mm screw mounting with 4 screw holes provided to mount the monitor head to compliant VESA 100mm x 100mm devices.



24" Wide LCD Monitor User Manual Model : L240w

4. Adjusting the picture

You can adjust the screen display by using the buttons located below the screen.





24" Wide LCD Monitor

User Manual

Model : L240w

4-1. Using the On Screen Display

To make adjustments in the On Screen Display, follow these steps:

MENU, SELECT

1. Press the MENU button to display the OSD to the screen.
2. Press the ▽ or △ button to choose the item you want, then Press the SELECT button. The selected item is highlighted.
3. Press the ▽ or △ button to choose the submenu you want to adjust.
4. Use the – or + button to adjust the value you want. The display unit automatically saves the new settings in 1 second after your last adjustments.
5. Press the MENU button to return to the previous menu to choose another item or Press the MENU button 1 or 2 times to exit from the OSD.

4-2. Direct access buttons

The buttons can be accessed quickly, at the touch of one button with the menu off.

SELECT AUTO ADJUST

At first display a full screen such as Window's background.
Press the SELECT (AUTO) button to adjust the shape of screen automatically.



SOURCE

Use the △ button to switch between VGA (analog) and DVI (Digital) input.
(VGA <-> DVI)



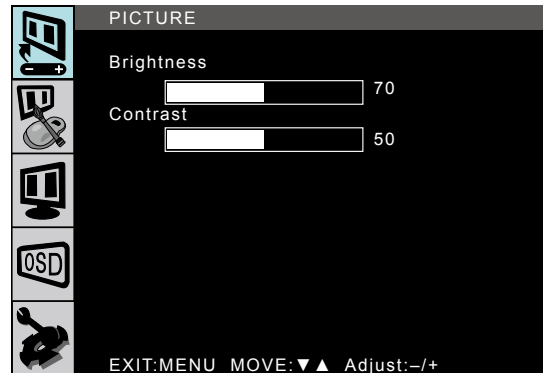
24" Wide LCD Monitor

User Manual

Model : L240w

4-3. OSD Adjustments

- PICTURE



BRIGHTNESS

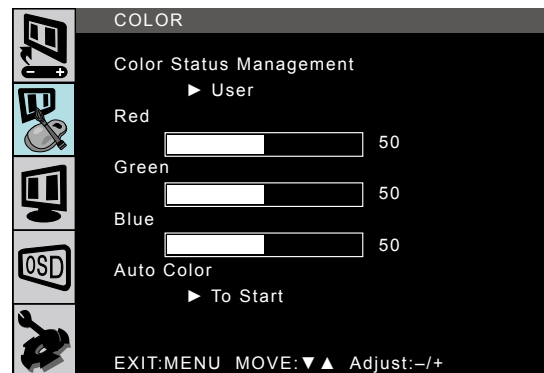
To adjust the brightness of the whole screen.

CONTRAST

To adjust the clarity of the whole screen.

- COLOR

**This function is only available for VGA mode.*



Color Status Management

- **Warm** : Changes to reddish white.
- **Cool** : Changes to bluish white.
- **Normal** : Changes to general white.
- **USER** : For adjusting the individual color (R, G, B) to your preference.

AUTO COLOR

To make optimizing color automatically according to the input signal with your computer.



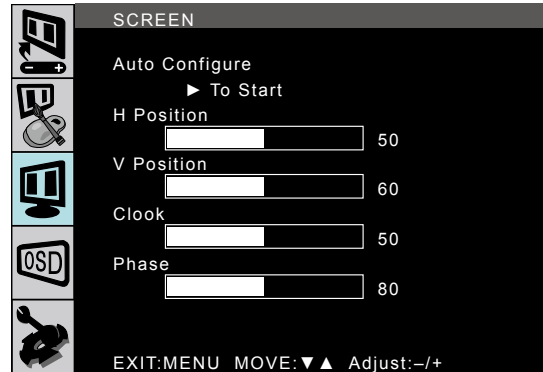
24" Wide LCD Monitor

User Manual

Model : L240w

- SCREEN

**This function is only available for VGA mode.*



Auto configure

To adjust the Horizontal Position, Vertical Position, Clock, and Phase automatically.

H. Position

To move image to the left or to the right.

V. Position

To move image up or down.

Clock

To adjust the horizontal position of the entire screen image.

Phase

To adjust the noise of the screen image.

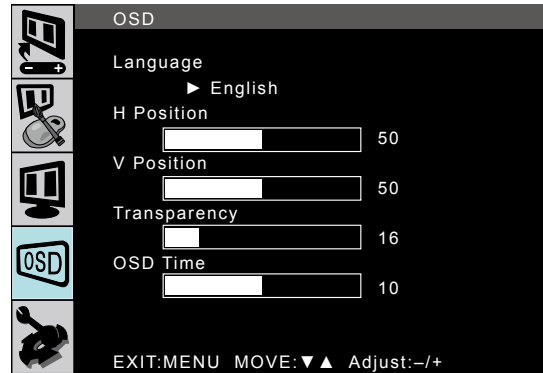


24" Wide LCD Monitor

User Manual

Model : L240w

- OSD



Language

You can choose one of 6 languages. (English, German, French, Italian, Spanish, or Korean)

H. Position

To adjust horizontal position of the OSD window on the screen.

V. Position

To adjust vertical position of the OSD window on the screen.

Transparency

To adjust the transparency of the OSD window.

OSD Time

To adjust OSD display time on the screen.



24" Wide LCD Monitor

User Manual

Model : L240w

- Setup



Source

To switch between current source and the other input source (RGB/DVI).

Aspect

To select the picture size on the screen.

- 16:10: Displays full image regardless of screen size.
- 4:3: Displays image to 4:3 ratio.

Factory reset

To return the current settings to the factory default values.

DCR

ON : To set for DCR function activated.

OFF : To set for DCR function deactivated.



24" Wide LCD Monitor

User Manual

Model : L240w

5. Display power management

Reducing power consumption

If the power management function of your computer is enabled, your monitor turns on and off automatically. You can control power management features from your computer.

Your computer may have power management features which enable the computer or monitor to enter a power saving mode when the system is idle. You can reactivate the system by pressing any key or moving the mouse.

Mode	LED	Power consumption
Normal	Blue	50W (Typical)
Off	RED(Orange)	0.5W (Typical)
Unplugged	Not illuminated	0 W

! The power button does not disconnect the monitor from the primary power source. The only way to isolate the monitor completely from the power supply is to unplug the power cable.



24" Wide LCD Monitor

User Manual

Model : L240w

6. Troubleshooting

If your monitor is not functioning properly, you may be able to solve the problem by following the suggestions below :

Problem	Possible solution
Blank screen	<p>If the power LED is not lit, press the soft power switch or check the AC cord to turn the monitor on. If the display unit is powered through the computer, check that the computer is switched on.</p> <p>The display unit might be in standby mode. Press one of the keyboard keys. Check that the keyboard is properly connected to the computer.</p> <p>Check that the signal cable connector is properly connected and that the connection pins are not bent or damaged. If the connector is loose, tighten the connector's screws.</p> <p>Check that the power cable is correctly connected to the display unit and to the power outlet.</p>
Error message: Video mode not supported	<p>Set the computer's display resolution to the same mode as the monitor's recommended native screen resolution.</p> <p>Compare these values with the data in the Preset Timing Table.</p>



24" Wide LCD Monitor

User Manual

Model : L240w

Problem	Possible solution
Color defects	Check that the signal cable connector is properly connected and that the connection pins are not bent or damaged. Try another color temperature.
Size, position, shape or quality unsatisfactory	Adjust the picture characteristics as described in the section OSD Adjustment(4-3).
Duplicated images	A problem with your graphics adapter or display unit. Contact your service representative.
Image is not stable	<p>Check that the display resolution and frequency from your PC or graphic adapter is an available mode for your monitor. In your PC, you can check through Control panel, Display, Settings.</p> <p>If the setting is not correct, use your computer utility program to change the display settings.</p>
Message : No signal	Check that the signal cable connector is properly connected and that the connection pins are not bent or damaged. If the connector is loose, tighten the connector's screws. Check that the computer is switched on.
The power LED is an orange color	The system entered a power saving mode. You can reactivate the system by pressing any key or moving the mouse.



24" Wide LCD Monitor

User Manual

Model : L240w

Problem	Possible solution
The power LED is an orange color	<p>LED Indicator can be orange color on changing of video mode or Input Signal.</p> <p>Check the Resolution and the frequency on the video part of your computer. Compare these values with the data in the Preset Timing Table.</p>

Contacting service

If the above troubleshooting hints do not help you find a solution to the problem, contact an authorized service agent. If the monitor is sent for service, use the original package if possible.

Unplug the display unit from the power outlet and contact a service agent when:

- The monitor does not operate normally according to the operating instructions.
- The monitor exhibits a distinct change in performance.
- The monitor has been dropped or the cabinet has been damaged.
- The monitor has been exposed to rain, water or liquid has been spilled onto the monitor.



24" Wide LCD Monitor

User Manual

Model : L240w

7. Specifications

LCD	24" viewable, Diagonal, Pixel pitch 0.270mm, A-si TFT
Display area	20.41(H) x 12.76(V) inch
Number of color	16.7 million colors (6-bit Hi FRC)
Input signals	R.G.B Analog, 15pin D-sub / DVI-D
Frequency rate	Horizontal : 31 to 83 KHz, Vertical : 59 to 76 Hz *1600x1200,1920x1200 resolutions can not set the horizontal frequency of 75Hz.
Maximum bandwidth	DVI: 170 MHz, VGA: 200 MHz
Maximum resolution	1920 x 1200 @ 60Hz
Recommended resolution	1920 x 1200 @ 60Hz
Input voltage	100-240V~ 2.0A
Power consumption	50 W (Typical)
Stand by Power	0.5 W (Typical)
OSD menu	BRIGHTNESS, CONTRAST, COLOR STATUS MANAGEMENT, AUTO COLOR, AUTO CONFIGURE, H/V POSITION, CLOCK, PHASE, LANGUAGE, OSD (H/V POSITION), TRANSPARENCY, OSD TIME, SOURCE, ASPECT, FACTORY RESET
VESA Wall Mounting	100mm X100mm screw mounting
Operating Temperature	5 ~ 35°C
Weights	21.8 lb unpacked, 27.6 lb packed
Dimensions (W X H X D mm)	22.8 x 17.9 x 9.4 inch

- Specification is subject to change without notice.
- Specification on "dead pixel" of LCD Panel applies to ISO 13406-2 Standard.