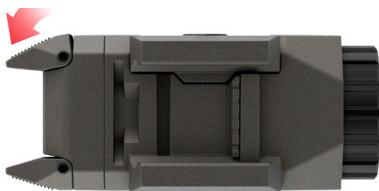


The INFORCE APL LED auto pistol light produces 200 lumens of white light with a tight beam for close to mid-range applications and balanced peripheral light for discernment of the surrounding area. The straightforward, bilateral and ambidextrous paddle switching system affords left or right hand activation and natural finger movement from the weapon to the switch. The INFORCE APL is ultralight and durable inside and out. Its integrated rail mounting system is compact and convenient. U.S. and international patents are pending.



Universal mounting system.



Push either paddle switch to activate the light.



- Rotate head quarter turn for lockout.
- Remove head to replace battery.



Includes (2) rail adaptors for use with MIL-STD-1913 rails.

200 LUMENS

RUN TIME: 1.5 hours

BILATERAL PADDLE SWITCHES OFFER:

- On/off switch operation with either hand
- Natural finger movement to activate the switches
- Constant and momentary options

INTEGRATED MOUNTING SYSTEM:

Accommodates universal and MIL-STD-1913 rails.

Length: 3 in. / 7.6 cm.

Width: 1.2 in. / 3 cm.

Weight: : 2.83 oz. / 80.2 g.

(1) Lithium 123A Battery Included

Features and Benefits:

FIBER COMPOSITE BODY is ultralight and durable.

HIGH EFFICIENCY EMITTERS provide longer run times and are virtually immune to failure.

HIGH-IMPACT GLASS WINDOW

PRECISION OPTICS provide focused hot spot and balanced peripheral light.

LIMITED LIFETIME WARRANTY

<u>ITEM NUMBER</u>	<u>DESCRIPTION</u>
INF-APL-B-W	Carbon Black Body, White LED
INF-APL-F-W	Flat Dark Earth Body, White LED

CAUTION: Do not use counterfeit or inferior-quality batteries, as they do not meet safety and performance standards and have been the cause of personal and property damage. To ensure safety and performance, the purchase of established brands, such as Duracell®, Energizer® or Panasonic® is recommended.

INFORCE APL LED AUTO PISTOL LIGHT USER MANUAL AND WARRANTY

INFORCE®

FIREARM AND APL SAFETY WARNINGS

Your INFORCE APL Auto Pistol Light is designed for use with destructive weapon systems. Improper operation or misuse of the INFORCE APL with these weapon systems could lead to personal injury or death of the operator or others within weapons range. Safe firearms handling procedures must be practiced at all times.

Before handling the weapon with the INFORCE APL attached, read and understand the entire contents of your firearm manual and the INFORCE APL instructions, especially the safety precautions and procedures for safe firearms handling. Always practice safe firearms handling techniques. Failure to comply with correct safety precautions and safe firearms handling techniques can result in serious injury, damage to property or death.

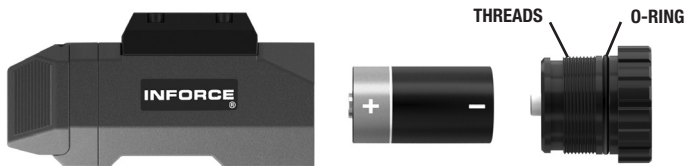
Never point the firearm at anything or anyone that you don't intend to shoot. Always keep your finger outside the trigger guard and off the trigger until you are ready to fire the weapon.

Always verify that the chamber of the weapon is empty or "clear" before attempting to mount or dismount the INFORCE APL.

Follow the cleaning procedures as set forth in the manual of your firearm. Always remove the INFORCE APL from the firearm when performing maintenance, cleaning or replacing the battery.

Do not operate the INFORCE APL around flammable/combustible materials or in flammable atmospheres involving evaporated gasolines, or where paints, solvents or other flammable liquids are stored.

BATTERY REPLACEMENT



Your INFORCE APL comes with (1) high-efficiency 123A Lithium battery. To insert the battery:

- See weapons handling safety instructions.
- Remove the INFORCE APL from the weapon.
- Turn the head ring counterclockwise to remove it from the body.
- Remove the spent battery and insert the new battery into the body positive (+) end first.
- Rethread the head ring clockwise onto the INFORCE APL body.

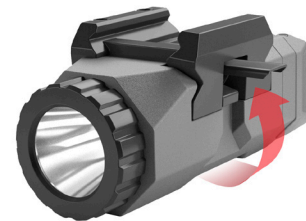
NOTES:

Batteries can leak and may cause damage to the inside of the light. Remove the battery if the light will be stored for more than 2 weeks.

CAUTION: Lithium batteries can explode or cause burns if recharged, shorted, disassembled or exposed to water, high temperatures or fire. Please follow manufacturer's guidelines for safe storage, use and disposal. If the light has been submerged, dry the exterior of the light prior to replacing the batteries. Fresh and salt water will damage internal electronics and batteries. **Do not use counterfeit or inferior-quality batteries, as they do not meet safety standards and have been the cause of personal and property damage. To ensure safety and performance, the purchase of established brands, such as Duracell®, Energizer® or Panasonic® is recommended.**

INFORCE APL BUILT-IN MOUNTING SYSTEM

- See weapons handling safety instructions.
- Lift the side rail clamp lever.
- Place the light onto the rail, positioning the mounting location bar into the pistol's rail slot.
- Lower the rail clamp lever to secure the light.



OPERATING INSTRUCTIONS

The INFORCE APL features a patent pending ambidextrous switching paddle system for easy operation. The position of the paddles are very natural and facilitate transitional finger movements from pistol to paddle switch to the trigger.

- Press and hold the paddle switch for momentary light.
- A quick click of the paddle switch provides constant light.
- The light can be turned on/off by either paddle switch.



RAIL BAR REPLACEMENT

- Lift the rail clamp lever.
- Remove the rail bar from the body using the hex key provided.
- Place the new rail clamp in position and fasten it onto the light.

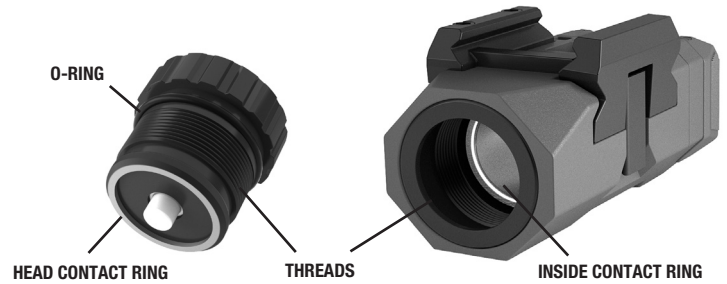
NOTE: Wider rail bar is for use with MIL-STD-1913 rails.



MAINTENANCE/CLEANING INSTRUCTIONS

Your INFORCE APL auto pistol light has been designed to provide maximum performance with minimum maintenance.

- **See weapons handling safety instructions.**
- Occasionally clean threads, head contact ring and internal contact ring with an alcohol swab and apply a thin coat of silicon-based lubricant to the threads and rubber O-ring; see illustration. Do not use a petroleum-based lubricant.
- Should the light become dirty from dust, sand or caked-on mud, rinse the fully assembled light with water and dry with a soft cloth.



PRODUCT WARRANTY

Emissive Energy Corp. (EEC) warrants our products and accessories to be free of defect in workmanship and materials for the lifetime of the original owner. We will repair or replace the products at our discretion if it is determined by us to be defective. In countries or jurisdictions in which specific restrictions exist on lifetime warranties, EEC provides a 10-year limited warranty. Damage to the product from misuse, abuse, neglect, use of other than INFORCE brand accessories, disassembly, defective batteries or altering the product from its original state voids the warranty. Battery power depletion and battery expiration is not covered. This warranty is in addition to and does not affect your statutory rights with respect to faulty goods.

THIS CONSTITUTES EEC'S ENTIRE WARRANTY; WE MAKE NO OTHER WARRANTIES, WHETHER EXPRESS OR IMPLIED, WITH RESPECT TO THE PRODUCTS, INCLUDING AND WITHOUT LIMITATION TO WARRANTIES OF MERCHANTABILITY AND FITNESS FOR A PARTICULAR PURPOSE. EXCEPT FOR THE EXPRESS WARRANTY TO REPAIR OR REPLACE THE PRODUCT AS SET FORTH ABOVE, EEC IS NOT RESPONSIBLE FOR ANY DIRECT, SPECIAL, INCIDENTAL, CONSEQUENTIAL, EXEMPLARY OR INDIRECT COSTS OR DAMAGE, REGARDLESS OF THE FORM OF ACTION, WHETHER IN CONTRACT, TORT (INCLUDING NEGLIGENCE), STRICT LIABILITY OR OTHERWISE, EVEN IF EEC HAS BEEN ADVISED OF THE POSSIBILITY THEREOF, NOR IS EEC LIABLE FOR ANY SUCH COSTS OR DAMAGES CAUSED BY MISUSE, NEGLIGENCE, MALFUNCTION, ALTERATION OR MODIFICATION OF ANY INFORCE PRODUCTS. BECAUSE SOME STATES DO NOT ALLOW THE EXCLUSION OR LIMITATION OF LIABILITY FOR CONSEQUENTIAL OR INCIDENTAL DAMAGES, IN SUCH STATES EEC'S LIABILITY IS LIMITED TO THE FULL EXTENT OF THE LAW.

©2012 Emissive Energy Corp.

Emissive Energy Corp., 135 Circuit Drive, North Kingstown, RI 02852 USA; Tel: 401-294-2030; Fax: 401-294-2050; www.inforce-mil.com

INFORCE and EMISSIVE ENERGY are registered trademarks of EMISSIVE ENERGY CORP. The distinctive shapes, styles, packaging configurations and overall appearances of all INFORCE flashlights and lighting products are trademarks of EMISSIVE ENERGY CORP. Designed and manufactured under one or more of the following U.S. patents: 6,966,677; 7,121,680; 7,153,004; 7,226,183; 7,517,108; 7,652,303; 7,784,963. **Other U.S. and international patents are pending.**

Designed and assembled in the U.S.A. of domestic and foreign components. This product qualifies as "American Made" under the Buy America Act.