

## Quick installation guide.

### 1) Check availability and unpack:

- Anoxomat
- User manual on CD-Rom
- Parts package: gas tube , 2 tube clamps, 1 reserve, Fuses
- One Mart jar and a catalyst.
- One gas cylinder (**not from Mart**)
- One reducing valve (if ordered, from Mart)
- Tools (**not from Mart**)
  - o An adjustable (nut) spanner to tighten the reducing valve
  - o Adjustable-joint pliers to tighten the gas tube clamps



### 2) Install the gas supply

- Mount the reducing valve on the gas cylinder; use the adjustable (nut) spanner
- Connect the reducing valve with gas input of the Anoxomat with the gas tube from the parts package; use a tube clamp on each side, use the adjustable-joint pliers to tighten the gas tube clamps
- Open the gas cylinders main supply, and set the pressure to 1.5 bar precisely.



### 3) Connect the Anoxomat to the power supply.

- Use a standard power cable

### 4) Switch on the system

- In the display the following text will appear:

Anoxomat  
AN2OP

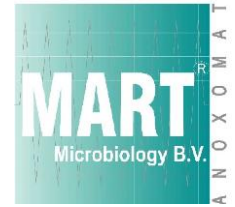
(Gas connection)



Your Anoxomat system is now ready for use.

For installation assistance please contact your local Anoxomat supplier or call Mart Microbiology: +31 (0)512-58 22 33

## Quick usage guide.



### 1) Fill a jar

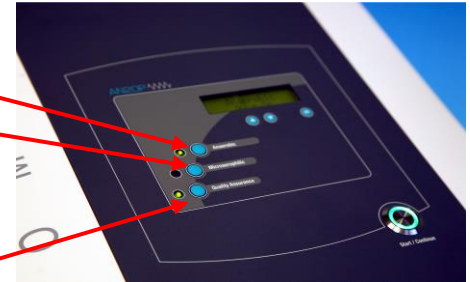
- Put your inoculated dishes, tubes, micro well plates, or other samples in the jar with the help of the petri dish holder.

### 2) Close the jar

- Put the lid on the jar, slide the jar clamp over the lid and tighten clamp screw.

### 3) Choose the appropriate recipe on the operation panel

- By pushing Anaerobic button.  
or the  
- Micro-aerophilic button.
- In case of the anaerobic recipe, place a regenerated catalyst under the catalyst clip on the bottom of the jar lid.
- The catalyst must be regenerated after each incubation, by heating it in a hot air oven at 160°C for 30 minutes or 100°C for 60 minutes to dry it thoroughly.

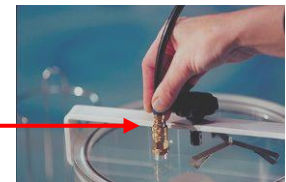


### 4) Choose the Quality assurance setting

- For the micro-aerophilic and anaerobic recipe, the quality assurance is engaged as default.
  - o The LED on the side of the button lights up.
- You can engage or disable the quality assurance by pushing the Quality Assurance button.

### 5) Connect a jar

- Push the black jar tube into the coupling on the jar lid
  - o In case the connector does not slide in, please first pull the outer ring of the snap shut coupling downward.



### 6) Press the start/continue button.

- During operation the start/continue button blinks slowly



### 7) When the process is finished

- the start/stop button blinks quickly and the display indicates:

Microaerophilic  
6% O<sub>2</sub>

Anaerobic  
0,2% O<sub>2</sub>

- To uncouple the jar for incubation, pull the outer ring of the snap shut coupling downward

**⚠ The Mart jars are never to be cleaned with alcohol, and not to be exposed to temperatures of more than 80°C.**

For further and more detailed information please view the operation Manual on the CD-Rom

