

Mini Cordless Optical Mouse



USER MANUAL

Actual appearance may vary
Notebook not included

© 2004 Medion. All rights reserved. Microsoft and Windows are registered trademarks of Microsoft Corporation in the U.S. and other countries. The names of actual companies and products mentioned herein may be the trademarks of their respective owners. Information in this document is subject to change without notice.

Table of Contents

<u>SAFETY AND MAINTENANCE</u>	<u>1</u>	<u>USING THE MOUSE.....</u>	<u>10</u>
<u>PACKAGE CONTENTS.....</u>	<u>3</u>	Batteries	10
<u>IDENTIFYING COMPONENTS</u>	<u>4</u>	Battery saving function	10
<u>SET UP.....</u>	<u>5</u>	Battery level display	10
Step 1: Insert batteries	5	Scroll wheel	11
Step 2: Install the software.....	6	Customize the scroll wheel	
Step 3: Connect the receiver	7	button	11
Windows 98SE/ME additional		Uninstalling the software.....	11
steps	8	<u>CUSTOMER SERVICE.....</u>	<u>12</u>
Step 4: Adjust frequency	9	Troubleshooting.....	12
		Technical Support	13
		If you need further help	14
		<u>OTHER INFORMATION.....</u>	<u>15</u>
		Ergonomics.....	15
		Battery Treatment	15
		FCC declaration of conformity	16
		System Requirements	18
		Limited Warranty.....	19

SAFETY AND MAINTENANCE

- ▶ Whenever you edit your data, make backup copies on an external data medium (disks, CD). Medion is not liable for loss of data and consequential damages.
- ▶ This product is designed to run on a PC/AT (IBM-compatible) computer with USB ports.
- ▶ Follow the safety instructions for the computer to which you are connecting the devices.
- ▶ Never open up the component housings. This might lead to a short-circuit or even to a fire.
- ▶ Never allow children to use electronic devices unsupervised.
- ▶ These devices should only be repaired by an authorized service partner. Please contact customer care if you have any technical problems.
- ▶ Keep the devices away from moisture and avoid dust, heat and direct sunlight.
- ▶ Position and operate these devices only on a stable, even and vibration-free surface to avoid damage.

- ▶ Allow a clearance of at least 20 inches from sources of high-frequency and magnetic interference (TV, mobile telephone, infrared devices, loudspeaker cabinets, etc), in order to avoid malfunctions and loss of data.
- ▶ When connecting additional components, follow electromagnetic compatibility directives. The devices are not intended for use in a heavy industry environment.
- ▶ Do NOT look directly into the LED (red light) at the bottom of the mouse to avoid damage to your eyes.

Disconnect the device and contact customer service:

- if the connector is dented or damaged;
- if liquid has entered the device housing;
- if a device does not operate correctly;
- if a device is dropped or the housings damaged.

PACKAGE CONTENTS

Please check that the contents are complete and notify Medion Customer Care (see page 21) within 14 days of purchase, if any item is missing. The product you have purchased contains:

Optical wireless mouse

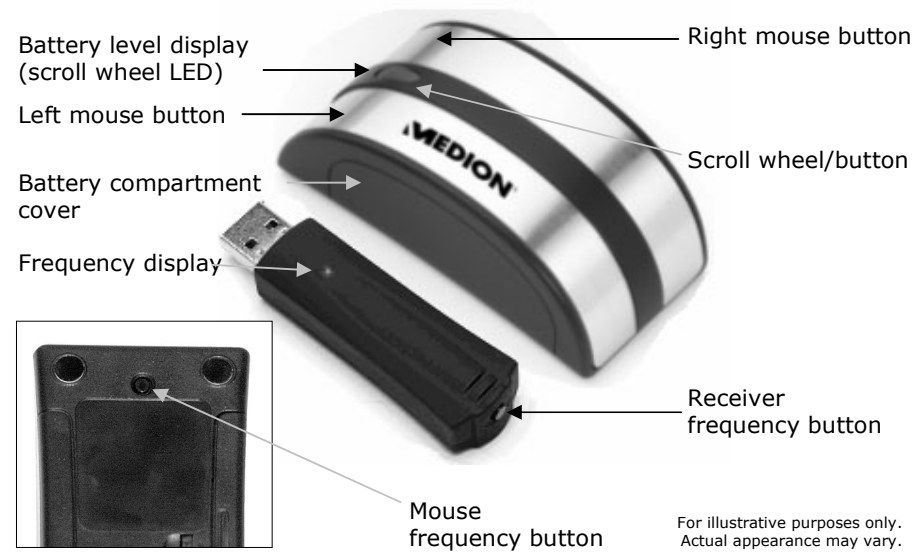
Receiver with USB connector

2 batteries (AAA, 1.5 V)

Installation software on CD-ROM

This user manual

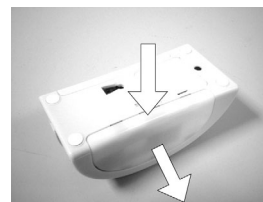
IDENTIFYING COMPONENTS



SET UP

Step 1: Insert batteries

1. Remove the battery compartment cover by pushing down on the cover and pulling it in the direction of the arrow.
2. Insert the batteries supplied (2 x type AAA) in the battery compartment of the mouse. The + end of the first battery inserted should point toward the scroll wheel. The + end of the second battery should point toward the back of the mouse.
3. Slide the battery compartment cover back on until it locks into place.



- After each battery change, adjust the frequency (see page 9).
- Please follow the instructions concerning battery treatment given on page 15.

Step 2: Install the software



- You should always back up your hard disk before installing software. Important files or settings may be overwritten.
- The software installation may require your operating system installation disc if you are using the Microsoft® Windows® 98SE operating system.

Users of Windows 98SE or Windows ME *must* install the software before connecting the receiver to the PC.

1. Insert the CD. The installation menu should start automatically.
2. Follow the on-screen instructions.
3. When prompted, select **Yes** to have the installation program restart your PC.

If the disc does not auto start:

1. Click the **Start** menu and select **Run....**
2. In the **Open** field, enter the letter for the drive where the CD-ROM is located, followed by a colon and **setup.exe**. For example, if your CD-ROM is in drive D:, enter **D:setup.exe**.
3. Click **OK**.

Step 3: Connect the receiver

➤ **Note:** Install the software **BEFORE** connecting the receiver!

1. Make sure your computer is on.
2. Insert the receiver into a free USB port on your computer.
3. The Microsoft® Windows® operating system should now detect that a new device has been connected. It will automatically identify your device and will alert you when it is installed and ready to use.

Windows 98SE/ME additional steps

If you are using Windows 2000 or Windows XP, skip to Step 4: Tune in the mouse and receiver.

1. Make sure the software disc is still in your CD-ROM drive.
2. When you see this window, click **OK**.



3. In the next window, click **Browse**.
4. Select the drive that contains the software CD. If you are using Windows 98SE, select the *cmouhid.vxd* file. If you are using Windows ME, double-click the *Winme* folder, then select the *cmouhid.vxd* file.

5. Click **OK**. This will return you to the *Insert Disk* window. Click **OK** again.
6. **Windows 98SE only:** installation may require your Windows 98SE installation disc. If prompted, insert this into any CD drive on your PC. If you see the message "The file 'mouse.driv' on Windows 98 Second Edition CD-ROM cannot be found," click **Browse**, then select the file **Base5.cab** and click **OK**. Then click **OK** on the *Insert Disk* window.

Step 4: Adjust frequency

1. Press the frequency adjustment button at the end of the receiver (see page 4). The status LED will flash.
2. Now press the frequency adjustment button on the bottom of the mouse (see page 4). The status LED flashes quickly for a few seconds and then lights steadily. The devices are now tuned to each other.

The receiver frequency display (see page 4) flashes rapidly when it is communicating correctly with the mouse.

USING THE MOUSE

Batteries

Battery saving function

If you do not use your optical wireless mouse for a few minutes, the battery saving function turns on. When the battery saving function is on, you cannot use the mouse to move the cursor on your screen. In order to reactivate the mouse, click any mouse button. If the battery saving function turns on while you are using the mouse, the batteries might need replacement.

Battery level display

Please replace the batteries as shown on page 5 when the battery level display (the scroll wheel LED - see page 4) flashes red while moving the mouse.

Scroll wheel

The scroll wheel of your mouse can be rolled (in order to scroll) or clicked.

1. To scroll, roll the wheel backward or forward.
2. To use the wheel as a button, press directly down on it.

Customize the scroll wheel button

You can customize the rate at which the scroll button moves information on the screen. You can also tell your computer what to do when you use the scroll wheel as a button. To change these settings, click the **Start** menu and select **All Programs** then **Browser MOUSE** then **Browser MOUSE** again. Please note that you can not adjust the "lines per scroll" function if the System Default (Intellimouse) is selected.

Uninstalling the software

Follow these steps to remove the mouse software from your PC:

1. Click the **Start** menu and select **All Programs** then **Browser MOUSE** then **Uninstall Browser MOUSE**.
2. Follow the instructions on the screen.

CUSTOMER SERVICE

Troubleshooting

- ▶ Are the batteries inserted incorrectly? Check battery placement (see page 5).
- ▶ Are the batteries drained? Replace the batteries with a fresh set as necessary.
- ▶ Are the mouse and receiver operating on the correct frequency? Follow the instructions on page 9 to adjust the frequency.
- ▶ Is the mouse in battery saving mode? Click any mouse button to exit battery saving mode.
- ▶ If you are working on a metal surface, use a mouse pad.
- ▶ If you use this mouse with a notebook with an integrated touch pad, some functions may be restricted by the system. You may need to disable the touch pad in order to use the full functionality of your mouse.
- ▶ If the mouse does not follow your movements fluidly, try using it on a different surface.
- ▶ Switch the computer off and check all connections. Once you have ascertained that the power supply is not at fault and all connections are intact, switch on the computer again.

Technical Support

This device has been extensively tested in our laboratory using a number of different units. However, it is quite normal for the software drivers to be updated from time to time. Compatibility with other programs or devices may require driver updates. Driver updates and the most up-to-date information on this product can be found at the following Internet address: <http://www.medion.com>

If you need further help

Medion offers additional customer support information on our website, including a Knowledge Base and e-mail support. In addition, our friendly and professional call center staff are ready to help you via telephone. Before you call, however, please have the following information available:

- The model of your computer
- A list of all peripherals (e.g., printers, external mice) that are attached to the computer
- A list of the software that is installed on the computer
- The software that you were using when the issue occurred
- Any error messages that may have appeared
- Is the issue repeatable? Can you make it happen again?
- What troubleshooting steps have you taken before contacting customer support?
- If you have been given a customer number previously, please have this available.

OTHER INFORMATION

Ergonomics

Medical studies have shown that certain physical ailments and injuries are linked to prolonged and repetitive movements in an unsuitable working environment and to improper work habits. Take frequent breaks when using a computer. If you experience pain, numbness or tingling in your arms, wrists, hands or fingers, consult a doctor.

Battery Treatment

Batteries may contain combustible materials. Misuse may cause battery leakage, heat, explosion or ignition, bringing about injury or damage to the device. Please observe strictly the following matters:

- ▶ KEEP CHILDREN AWAY from batteries.
- ▶ If by any chance, the batteries are swallowed, consult a doctor immediately.
- ▶ DO NOT CHARGE batteries (except rechargeable batteries).
- ▶ DO NOT FORCIBLY DISCHARGE batteries.
- ▶ DO NOT SHORT-CIRCUIT batteries.

- ▶ DO NOT HEAT or DISPOSE OF IN FIRE.
- ▶ DO NOT DISASSEMBLE or DEFORM batteries. Your hands and fingers may be injured, or the liquid of the battery may get into your eyes or adhere to your skin. If this happens, rinse with a large quantity of water immediately and consult a doctor.
- ▶ DO NOT expose batteries to strong impact by dropping or throwing the batteries.
- ▶ DO NOT reverse the positive (+) and negative (-) terminals.
- ▶ Do NOT MIX used and new or different types of batteries together.
- ▶ PROMPTLY REMOVE used batteries from the device.
- ▶ REPLACE ALL BATTERIES with new batteries of the same type at the same time.
- ▶ DO NOT put used batteries in household trash! Follow local and national regulations for battery disposal.

FCC declaration of conformity

This hardware device complies with Part 15 of the FCC Rules. Operation is subject to the following two conditions: 1) this device may not cause harmful interference, and 2) this device must accept any interference received, including interference that may cause undesired operation. This equipment has been tested and found to comply with the limits for a Class B digital device, pursuant

to Part 15 of the FCC Rules. These limits are designed to provide reasonable protection against harmful interference in a residential installation. This equipment generates, uses, and can radiate radio frequency energy and, if not installed or used in accordance with the instructions, may cause harmful interference to radio communications. However, there is no guarantee that interference will not occur in a particular installation. If this equipment does cause harmful interference to radio or television reception, which can be determined by turning the equipment off and on, the user is encouraged to try to correct the interference by one or more of the following measures: 1) reorient or relocate the receiving antenna; 2) increase the separation between the equipment and the receiver; 3) connect the equipment to an outlet on a circuit different from that to which the receiver is connected; 4) consult the dealer or an experienced radio/TV technician for help. Any changes or modifications not expressly approved by the party responsible for compliance could void the user's authority to operate the equipment. Where shielded interface cables have been provided with the product or specified additional components or accessories elsewhere defined to be used with the installation of the product, they must be used in order to ensure compliance with FCC regulations.

System Requirements

Computer	PC/AT-compatible computer
Processor power	Pentium 100 MHz or higher
Operating system	Windows® 98SE/ME/2000/XP
RAM	16 MB, 32 MB or more recommended
Hard disk drive	min. 10 MB free space
Installation	CD-ROM drive
Connections	USB

Limited Warranty

MEDION warrants to our customers that this product is free from defects in materials and workmanship as follows: for a period of one (1) year from the date of original purchase, defective parts or a defective product returned to a MEDION repair facility or a MEDION Authorized Service Facility ("ASF") for such product, as applicable, and proven to be defective upon inspection, will be exchanged for new or comparable rebuilt parts, or a refurbished product, as determined by the MEDION repair facility or the ASF.

Limited warranty repair or replacement shall not extend the original limited warranty period of the defective product. This limited warranty does not cover any supplies or accessories, including but not limited to: software, blank media, user-installed drives, etc.

EXCLUSIONS: this limited warranty does not apply, and you will have no remedy hereunder with respect to (a) products that have been modified, opened, repaired or otherwise altered, except by MEDION or an ASF, (b) products that have been damaged or destroyed after delivery to the customer, (c) any third party software, interfaces, parts, supplies, peripherals or other products or any defects resulting from use of the product in connection with such third party products, (d) defects resulting from improper or inadequate maintenance, calibration or site preparation, (e) defects resulting from any misuse, abuse, accident, neglect, negligence or any use other than in accordance with the handling or operating instructions provided by MEDION, (f) defects resulting from exposure to unusual physical or electrical stress or from any operation other than in accordance with the published environmental specifications for the product.

TO THE EXTENT ALLOWED UNDER APPLICABLE LAW, THE ABOVE WARRANTIES ARE EXCLUSIVE AND NO OTHER WARRANTY OR CONDITION, WHETHER WRITTEN OR ORAL, IS EXPRESSED OR IMPLIED AND MEDION SPECIFICALLY DISCLAIMS ANY IMPLIED WARRANTIES, INCLUDING ANY IMPLIED WARRANTY OF MERCHANTABILITY OR FITNESS FOR A PARTICULAR PURPOSE AND NO IMPLIED WARRANTY APPLIES TO THE PRODUCT AFTER THE APPLICABLE PERIOD OF THE EXPRESS LIMITED WARRANTY STATED ABOVE. Some countries, states or provinces do not allow exclusions or limitations on the duration of an implied warranty, so the above limitation or exclusion might not apply to you. This limited warranty gives you specific legal rights and you might also have other rights that vary from country to country, state to state, or province to province.

MEDION's limited warranty is valid in any country or locality where MEDION has a support presence for this product and where MEDION has marketed this product. The level of warranty service you receive may vary according to local standards. MEDION will not alter form, fit or function of the product to make it operate in a country for which it was never intended to function.

TO THE EXTENT ALLOWED UNDER APPLICABLE LAW, THE REMEDIES IN THIS LIMITED WARRANTY STATEMENT ARE YOUR SOLE AND EXCLUSIVE REMEDIES. EXCEPT AS INDICATED ABOVE, IN NO EVENT WILL MEDION OR ITS SUPPLIERS BE LIABLE FOR LOSS OF DATA OR FOR INDIRECT, SPECIAL, INCIDENTAL, CONSEQUENTIAL (INCLUDING LOST PROFIT OR DATA), OR OTHER DAMAGE, WHETHER BASED IN CONTRACT, TORT, OR OTHERWISE. IN NO EVENT SHALL RECOVERY OF ANY KIND AGAINST MEDION BE GREATER IN AMOUNT THAN THE PURCHASE PRICE OF THE PRODUCT SOLD BY MEDION WHICH CAUSED THE ALLEGED DAMAGE. WITHOUT LIMITING THE FOREGOING, YOU ASSUME ALL RISK AND LIABILITY FOR LOSS, DAMAGE OR INJURY TO YOU AND YOUR PROPERTY AND TO OTHERS AND THEIR PROPERTY ARISING OUT OF USE OR MISUSE OF, OR INABILITY TO USE THE PRODUCT NOT CAUSED DIRECTLY BY THE NEGLIGENCE OF MEDION. Some countries, states or provinces do not allow the exclusion or limitation of incidental or consequential damages, so the above limitation or exclusion may not apply to you. THE WARRANTY TERMS CONTAINED IN THIS STATEMENT, EXCEPT AS LAWFULLY PERMITTED, DO NOT EXCLUDE, RESTRICT OR MODIFY AND ARE IN ADDITION TO THE MANDATORY STATUTORY RIGHTS APPLICABLE TO THE SALE OF THIS PRODUCT TO YOU.

Please note the following:

Be sure to keep your purchase receipt in a safe place. MEDION, at its option, may require a copy of the receipt to validate the warranty period effective date (i.e. date of purchase). Warranty liability only applies to material or factory faults. It does not apply to damage due to breakage, for example, a crack in the housing. Our service includes unit exchange or send-in repair:

Unit Exchange

In locations where Unit Exchange is available, MEDION will send you a replacement unit. You must return the defective unit to MEDION (using the shipping carton that the new one came in.)

Send-In Repairs

In locations where Send-In Repair Service is available, repair service can be obtained by shipping your unit to the MEDION Repair Center. The unit will be repaired and returned to you.

For either Unit Exchange or Send-In Repairs, you must have an authorized RMA number from Medion support before shipping your defective product.

Replacement products may be either new or equivalent in performance to new. MEDION replacement or repaired products may contain remanufactured parts equivalent to new in performance or may have been subject to incidental use.

Out-of-Warranty Support

In addition to providing free technical support during the warranty period, MEDION is also available to support your product after the warranty period has ended. This out-of-warranty support will be provided on a fee basis.

Customer Care Available 24/7

on the web at
www.medion.com

toll-free* telephone support at
(866) 633-4660

*during limited warranty period