

# **Tribeca™**

## **Installation Instructions**



## **⚠ CAUTIONS**

- Read entire installation instructions carefully before beginning installation and save these instructions.
- To avoid possible risk of electrical shock and fire, install this light fixture only on Hunter Tribeca™ fans, models 28120, 28121 and 28122. Note: To find the fan model number, check the ceiling fan package or on the nameplate label located on top of the motor housing of the ceiling fan.

## **⚠ WARNINGS**

- To avoid possible electrical shock, before installing light fixtures disconnect power by turning off the circuit breakers both to the outlet box and to its associated wall switch location. If you cannot lock the circuit breakers in the off position, securely fasten a prominent warning device, such as a tag, to the service panel.
- Connect house wiring to the fan before attaching the light fixture to the fan.
- All wiring must be in accordance with national and local electrical codes. If you are unfamiliar with wiring, you should use a qualified electrician. Professional installation is recommended.
- To reduce the risk of fire or personal injury, allow bulbs and surrounding surfaces to cool to room temperature before touching or removing them.

## **Troubleshooting**

### **Light does not come on.**

1. Push the light button on the remote transmitter. Verify remote operation. Refer to fan manual for remote operation and troubleshooting.
2. Make sure bulbs are installed properly and filament is not blown.
3. Make sure breakers or fuses are on.
4. Verify that the light power lead is connected at the ceiling. Refer to your ceiling fan manual for locating assembly and wiring.

### **Glass rattles.**

1. Make sure the glass globe is secure.

This light fixture is for use only on Hunter Tribeca™ Ceiling Fans, models 28120, 28121, and 28122.

For other problems or questions, contact the Hunter Fan Company Technical Support at  
1-888-830-1326 or  
[techsupport@hunterfan.com](mailto:techsupport@hunterfan.com).

<http://www.hunterfan.com>

**HUNTER**

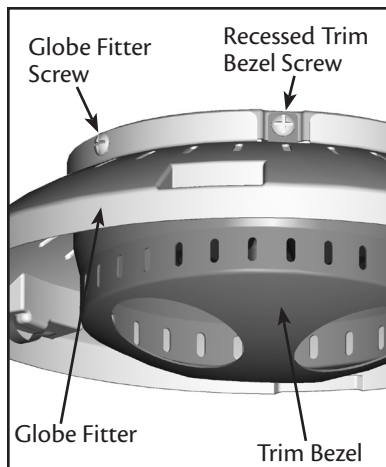
1. Disconnect power to the ceiling fan by turning off the circuit breakers both to the outlet box and to its associated wall switch location.
2. Find the empty lower switch housing that came with your Tribeca™ fan. If you are not sure what this piece is, refer to your Tribeca™ fan manual.

**Note:** If your Tribeca™ fan is already installed, you will need to remove the fan only switch housing before proceeding. Refer to your Tribeca™ fan manual.

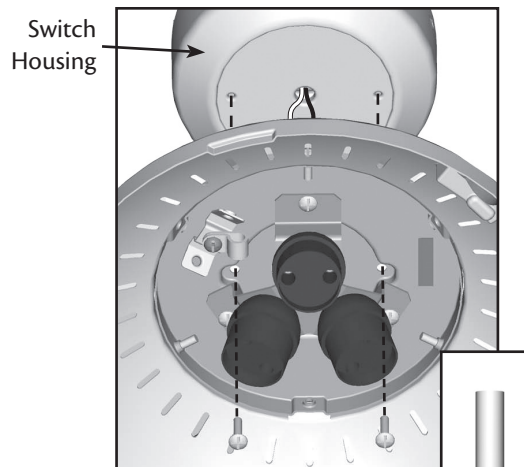
3. On the light kit housing, find the three recessed trim bezel screws and remove them. Remove the trim bezel. Do not discard these screws. You will reuse them.

**Note:** The illustrations in the manual assume you are installing the light kit with the globe fitter. If you want to use the light kit without the globe, remove the three globe fitter screws and the globe fitter. Retain the globe fitter and the screws in case you want to use the globe fitter in the future.

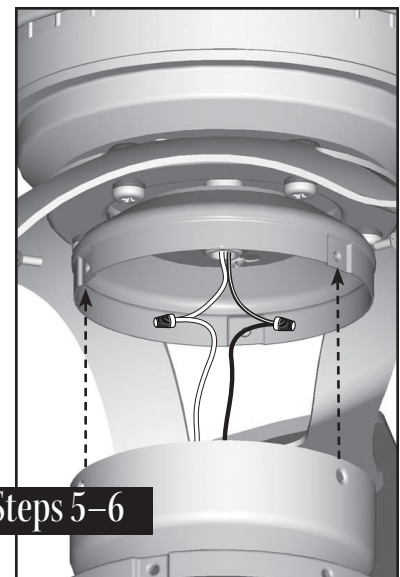
4. Thread the wires from the light kit through the hole in the center of the switch housing. Attach the lamp holder assembly to the switch housing. Use 2 #6-32 x 5/8 inch screws. Align the holes and tighten the screws.
5. Connect the black wire in the light to the black wire with white stripe in the fan. Connect the white wire in the light to the white wire in the fan. Secure both wire connections with the ceramic wire nuts provided.
6. Attach switch housing to fan using three side screws provided with the fan.



Step 3

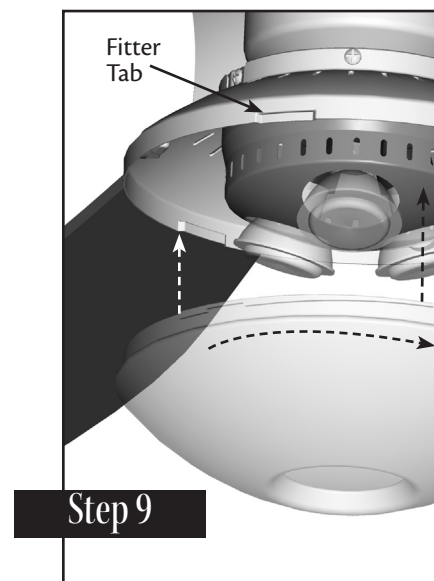
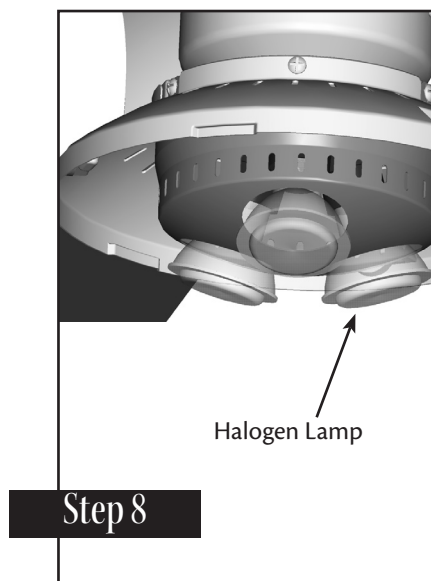
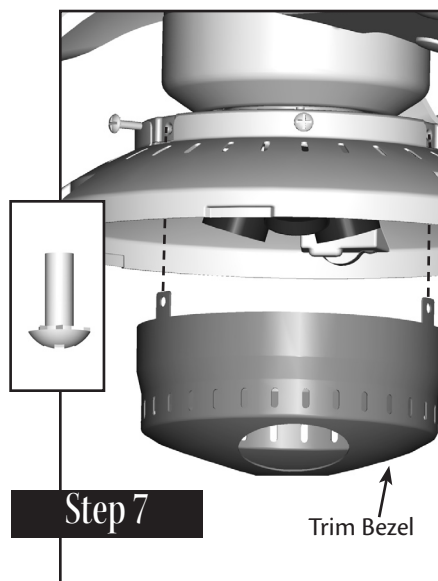


Step 4



Steps 5-6

7. Use the three screws from step 3 to reattach the trim bezel to the lamp holder assembly. Tighten the screws securely.
8. Install a 50-Watt, GU-10 based halogen lamp (included) into each of the three lamp sockets. Be sure to insert the pins on each lamp into the receptacle in the fixture and twist the lamp clockwise to secure it. If you are not installing the globe, your installation is complete and you can restore power to the ceiling fan. Otherwise, proceed with step 9.
9. Raise the glass globe and align the indents in the glass globe with the tabs on the fitter. Twist the glass globe clockwise to secure it. The installation is complete and you can restore power to the ceiling fan.





Hunter Fan Company  
2500 Frisco Avenue  
Memphis, Tennessee 38114



This Light Fixture weighs 2.75 lbs.

© 2005 Hunter Fan Company

Printed in China & Taiwan