

New Product Summary

Launch Date – 1st February 2008
Under NDA Until – 9th January 2008

**Epson
EMP 400W**

Ideal for your classroom or meeting room - flexible, efficient and reliable

The new Epson EMP-400W projector provides high quality images even when positioned close to the screen. Easy to set up and control, it will deliver a 60" diagonal 16:10 image from a distance of only 73cm.

Compact, sleek and stylish

The Epson EMP-400W is both versatile and portable. Utilising the latest 3LCD technology, you'll enjoy brighter images with the 1800 ANSI lumens, more natural colour reproduction and crisp, smooth video playback. Your audience will also remain focused on your presentation thanks to its quiet operation at just 28 dB*.

Wide Screen WXGA Resolution

The WXGA resolution of the EMP-400W delivers clear, sharp images regardless of whether you are using a 4:3, 16:9 or 16:10 aspect ratio. Perfect for use with modern laptops, screens and interactive whiteboards.

Mobile or fixed solutions

Easily moved from room to room, the Epson EMP-400W can be easily positioned close to the screen on the end of a table or permanently fixed to walls or ceilings in classrooms, training rooms and meeting rooms.

Easy remote management

When the EMP-400W is connected to a network, Epson EMP Monitor allows you to remotely monitor the status, turn the projector on or off and even switch sources. Email alerts can be sent to warn of any potential problems and timers.

Multi-media and audio capability

The Epson EMP-400W accepts input data from two PCs, allowing you to conveniently switch between them. The built-in 10W speaker offers excellent audio support, and optional cables are available to connect to a range of other sources, such as DVD players and digital cameras.

E-TORL technology

Our patented E-TORL lamp ensures clear visibility, even in light rooms giving increased brightness for lower power consumption than standard lamps. Smaller, brighter, more energy efficient, the E-TORL is tomorrow's lamp, today.

Versatile, affordable, compact - ideal for classrooms, seminars and training rooms

- Project a 60", WXGA image from only 73cm
- Bright images with 1800 ANSI lumens from an energy efficient, Epson exclusive E-TORL lamp
- Exceptional image quality through Epson's 3LCD technology
- Instant Off keeps you in control with no delays
- Enhanced security with password protection and security bar
- Monitor and control through direct network connection
- Internal 10W speaker for added audio capabilities

*in low brightness mode



**3LCD
E-TORL**



Ordering Information

Description	EMP-400W LCD Projector
Part Number	V11H281040DA
Barcode	TBC
Carton Dimensions	TBC
Carton Weight	net= 3.6kg; gross=TBC

* The last two letters may vary depending on the version. See the RRP list or Trade Price lists for correct part codes.

Screen Size & Projection Distance

Use the Epson Projection Distance Calculator software available from www.epson.co.uk for distances and screen sizes not shown below.

Screen size [inch]	Projection distance					
	Wide			Tele		
	cm	inch	foot	cm	inch	foot
min 37				54	21	1.8
40				58	23	1.9
50	54	21	1.8	73	29	2.4
60	65	26	2.1	89	35	2.9
70	76	30	2.5	104	41	3.4
80	88	34	2.9	119	47	3.9
85	93	37	3.1			
90	99	39	3.2			
100	110	43	3.6			
max 110	122	48	4.0			

Accessories

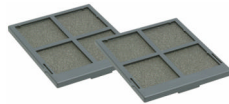
(model code) **order code**

Consumables

Spare Lamp (ELPLP42)
V13H010L42



Air Filter Set (ELPAF13)
V13H134A13

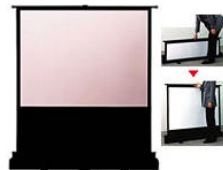


Screens

50" Portable Screen (ELPSC06)
V12H002S06



60" Portable Screen (ELPSC07)
V12H002S07



80" Portable Screen (ELPSC08)
V12H002S08

Mountings

Ceiling Plate (ELPFC03)
Required if using a ceiling pipe.
V12H003C03



Ceiling Pipe (silver) 370mm
(ELPFP04)
V12H003P04

Ceiling Pipe (silver) 570mm
(ELPFP05)
V12H003P05



Ceiling Pipe (silver) 770mm
(ELPFP06)
V12H003P06

Ceiling Mount (ELPMB18)
Connects to the projector and either directly to the ceiling, or to a ceiling pipe.

V12H003B18



Cables

VGA Computer Cable HD-15 to HD-15 1.8m (ELPKC02)

V12H005C02



VGA Computer Cable HD-15 to HD-15 3.0m (ELPKC09)

V12H005C09

VGA Computer Cable HD-15 to HD-15 20m (ELPKC10)

V12H005C10

Component Video Cable (ELPKC19)

V12H005C19



HD-TV Cable (ELPKC22)

V12H005C22



What's in the Box

Projector
with Lens Cover



Remote Control



2 x AAA alkali batteries
for the remote control



Power Cable
3.0m cable



Computer Cable

Mini D-Sub 15-pin/mini D-Sub 15-pin, 1.8 m (6 ft.)
Use when projecting images from a computer



Read This First Booklet

Explains the contents of the box and which manuals the user should refer to.

Setup Guide

Contains information on basic operations for preparing the projector before use (setup and connecting video equipment or a computer) and for starting projection.

Document CD-ROM

Contains information on common and useful functions, configuration, troubleshooting, and maintenance.

Safety Instructions

/ World Wide Warranty Terms

Specifications

Epson EMP-400W

MODEL		EMP-400W		
Projection System		RGB liquid crystal shutter projection system		
Projection Method		Front / Rear / Ceiling mount		
Specification of Main Parts		LCD	Size	0.56-inch with MLA (D7)
			Driving Method	Poly-silicon TFT active matrix
			Pixel Number	1,024,000 dots (1280x800) x3
			Native Resolution	WXGA
			Aspect Ratio	16:10
			Pixel Arrangement	Cross stripe
		Projection Lens	Refresh Rate	50 Hz - 60 Hz
			Type	Digital zoom / Manual focus
			F-Number	1.80
			Focal Length	6.48 mm (Projected distance 0.97m)
			Zoom Ratio	No Optical Zoom, Digital Zoom (1.0-1.35)
			Lens Cover	Yes
		Lamp	Type	170 W UHE (E-TORL)
			Life	3000 hours (High bright) / 4000 hours (Low bright)
Optical System		Dichroic Mirror Separation & Prism combine Method		
Screen Size (Projected Distance)		50" to 110" [0.54 to 1.22 m] Standard size: 88.3" screen 0.97 m		
Offset		10:-1.5		
Brightness	High Brightness Mode		1800 ANSI lumens (Colour mode: Game)	
	Low Brightness Mode		1420 ANSI lumens (Colour mode: Game)	
Contrast		500:1 (Colour mode : Game)		
Brightness Uniformity		Typ. 85%		
Colour Reproduction		Full-colour (16.77 million colours)		
Video Quality		Simple Interlace-Progressive conversion		
Sound Output		10W Monaural		
Control panel		Yes		
Function		User logo, AV mute, Freeze, E-Zoom, Help		
Colour Mode		PC: Photo, Presentation1, Presentation2, Theatre, Game, sRGB, Blackboard, Text Video: Sports, Presentation1, Presentation2, Theatre, Game, sRGB, Blackboard, Text		
Remote Control Infrared Receiver Position / Distance / Directivity		Front & rear (selectable), 6 m Right / Left : -30 to +30 degrees Upper / Lower : Front 0 to +60 degrees Rear -30 to +30 degrees		
Effective Scanning Frequency Range (Analogue)	Pixel Clock		13.5 MHz to 162 MHz up to UXGA 60 Hz	
	Horizontal		15 kHz to 92 kHz	
	Vertical		50 Hz to 85 Hz	
Adjustment Function	Projector / Remote Control		Brightness / Contrast / Tint / Saturation / Sharpness / Input signal / Sync / Tracking / Position / Colour temperature / Volume / etc.	
	Foot Adjuster		Front-centre	
	Tilt Angle		0 to 13 degrees	
	Keystone Correction		Vertical : -15 to +15 degrees	
	Auto Keystone Correction		N/A	
	Source Search		Yes	
	Auto Detection of RGB/Component		Yes	
	Operation Panel Protected Function		Yes	
	Sleep mode		Yes	
	Password Protected Function (Security Function)		Yes (Protection of User logo, Network)	
	Analogue RGB I/O	Display Performance	Native	1280x800 dots
			Input Signal	Signal Type
		Video Signal		Analogue (0.7 Vp-p, 75 ohm / Mac 0.714 Vp-p, 75 ohm)
Sync. Signal		Separate (positive & negative, bi-polarity 2-5 Vp-p)/ Composite (positive & negative, bi-polarity 2-5 Vp-p)/ Sync-on-green (negative, 0.3 Vp-p)		
Audio Signal		500 mVrms / 47 k-ohm		
Input Terminal		Video	D-sub 15pin x 2 Blue moulding	
		Audio	Stereo mini-jack x 2	
Output Signal		Video Signal	Analogue (0.7 Vp-p, 75 ohm / Mac 0.714 Vp-p, 75 ohm)	
		Sync. Signal	Separate (positive & negative, TTL) / Composite (positive & negative, TTL) / Sync. on green (negative 0.2-0.4 Vp-p)	
Output Terminal		Video	D-sub 15pin x 1 Black moulding (Output signal : Computer * only)	
	Audio	Stereo mini-jack		
Video I/O	Display Performance		NTSC: 560 lines, PAL: 560 lines	
	Input Signal	Video Standard	NTSC / NTSC4.43 / PAL / M-PAL / N-PAL / PAL60 / SECAM	
		Video Signal	Composite Video (1.0 Vp-p / Sync.negative, 75 ohm) /S-Video (Luminous 0.714 Vp-p, Chrominous 0.286 Vp-p, 75 ohm) /Component Video (Analogue Y level 0.7 V, 75 ohm / Cr Cb level+/-0.35V, 75 ohm / sync.negative 0.3 V or 3-state +/-0.3 V on Y) /RGB Video (0.7 V	
		Audio Signal	500 mVrms / 47 k-ohm	
	Input Terminal	Video	Composite Video: RCA (Yellow) x 1	
			S-Video: Mini DIN	
Component Video: D-sub 15pin Blue moulding (in common with Analogue RGB connector)				
	RGB Video: D-sub 15pin Blue moulding (in common with Analogue RGB connector)			
	Audio	RCA x 1 (White/Red)		
Control I/O	USB I/O	I/O Terminal	N/A	
		I/O Speed	N/A	
	Serial I/O	I/O Terminal	D-sub 9pin x 1	
		I/O Signal	RS-232C	
	Network Interface	LAN (RJ45) x 1		
Operating Temperature	5 °C to 35 °C <41 °F to 95 °F> (20%-80% Humidity)Thermal shut down > 45 °C			
Operating Altitude	0 m to 2286 m<0 ft to 7500 ft> (over 1500 m / 4,921 ft :with High altitude mode)			
Direct Power On	Yes			

Direct Power Off		Yes	
Start-up Period		about 5 seconds warm-up period: 30 seconds	
Cool-down Period		Instant off	
Exhaust Direction		Side	
Theft Proof		Yes	
Padlock & Security Cable Hole		Yes	
Kensington Lock		Yes	
Power Supply Voltage		100 - 240 V AC \pm 10%, 50/60 Hz	
Power Consumption	230V Area (Europe, etc)	Lamp On	236 W
		Standby (Network On)	6.4 W
		Standby (Network Off)	5.5 W
Dimension	Exclude Feet (D x W x H)	258 x 327 x 95	
	Maximum Dimension (D x W x H)	272 x 327 x 157	
Weight		Approx. 7.9 • bs. / 3.6kg	
Fan Noise	High Brightness Mode	35 dB	
	Low Brightness Mode	28 dB	
Compatible Standard	Safety	Europe	IEC 60950-1 1st edition (CE Marking)
	EMC	CE(Europe)	EMC directive (2004/108/EC)
	Environmental Protection	CE(Europe)	Dioxide regulation
		All countries	Recycling regulation
Supplied Accessories	Power Cable		3m
	Computer Cable		1.8 m D-sub 15pin (Male) - D-sub 15pin(Male)
	Remote Control		Compact type
	Battery		Manganese dry cell x2
	Bundled Software		EPSON Projector Software (CD-ROM)
	Password Protect Sticker		Yes
	User's Manual Set		Yes
	UK warranty card		Yes
	Security pack		No
	Optional Accessories	Spare Lamp	
Air Filter Set			ELPAF13
50" Portable Roll Screen			ELPSC06
60" Portable Roll Screen			ELPSC07
80" Portable Roll Screen			ELPSC08
100 Type Screen			ELPSC10
Computer Cable		HD15 / HD15, 1.8 m	ELPKC02
Computer Cable		HD15 / HD15, 3.0 m	ELPKC09
Computer Cable		HD15 / HD15, 20.0 m	ELPKC10
Component Video Cable		HD15 / 3RCA (male), 3.0 m	ELPKC19
HD-TV Cable		HD15 / D, 3.0 m	ELPKC22
Ceiling Mount		Silver colour	ELPMB18
Ceiling Plate		For Hanging Ceiling Mount with Pipes. Silver colour	ELPFC03
Pipe 370mm		Silver colour	ELPFP04
Pipe 570mm		Silver colour	ELPFP05
Pipe 770mm		Silver colour	ELPFP06
Easy MP Part	Function		ESC/VP.net
			E-mail notification
			SNMP
			Web control
			PJ-Link
		Duet	
Software		EMP Monitor (for Windows)	