

# User Box

Application launcher for handhelds

User manual

## Table of Contents

Table of Contents.....	2
Revision History.....	3
Installation Procedure.....	4
Licensing the launcher.....	6
Using the launcher.....	7
User/Administrator Modes.....	7
Applications tab.....	7
Administrator tab.....	8
Keyboard test.....	9
Tools tab.....	9
Passwords .....	10
Passwords types table.....	11
Configuration.....	12
User Box main options.....	12
User options.....	15
Administrator options.....	15
Shortcuts .....	16
Schedule of WireLess Deployer scripts.....	17
Keyboard blocking.....	17
Process Watcher.....	17

## Revision History

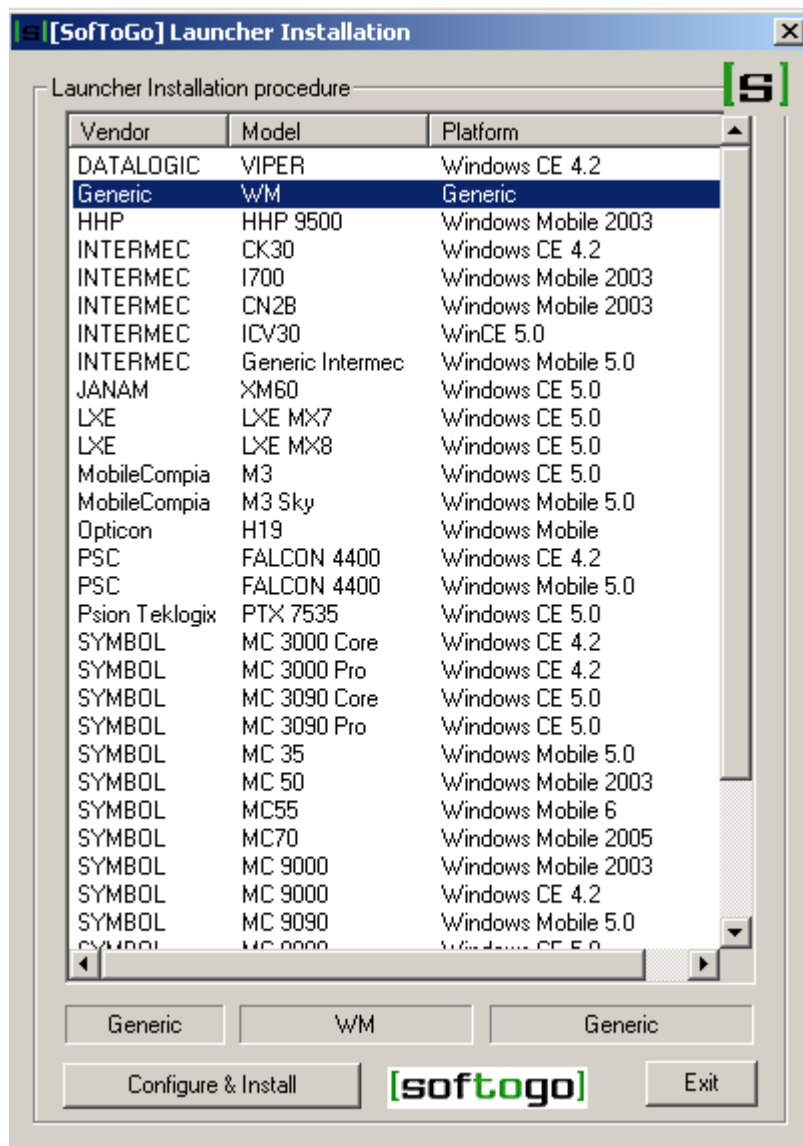
Changes to the original manual are listed below:

Version	Date	Description
1.0	2009/10/02	Initial release.

## Installation Procedure

Go to Start Menu -> Programs -> Launcher UserBox -> UserBox


Then, select the Vendor, Model and Platform that your device is compatible with from the list (see image below). Once you selected an item, click on the button "Configure & Install".



Depending on the model/platform selected you will be able to make the Wi-Fi configuration persistent. Follow the instructions on the Wi-Fi section as the image below shows.

Retrieve	<b>Wi-Fi.</b> Set up the Wireless LAN on one device and save the settings (one time only). (*)The settings will be saved on the file "WlanConfig.txt" (see file)
SET	Set persistent the previously saved configuration.


To configure the launcher, click on the button "Configure Launcher" (see "configuring launcher" image). It will open an instance of IniEditor to let you configure the launcher. After you are done, close the IniEditor. Remember to save the file before exiting IniEditor.

	<input type="button" value="Configure Launcher"/>	<b>Configure Launcher.</b> Modify the configuration file.
---	---	--

Before continuing the installation process make sure your device is connected to your desktop via ActiveSync as the image below shows.

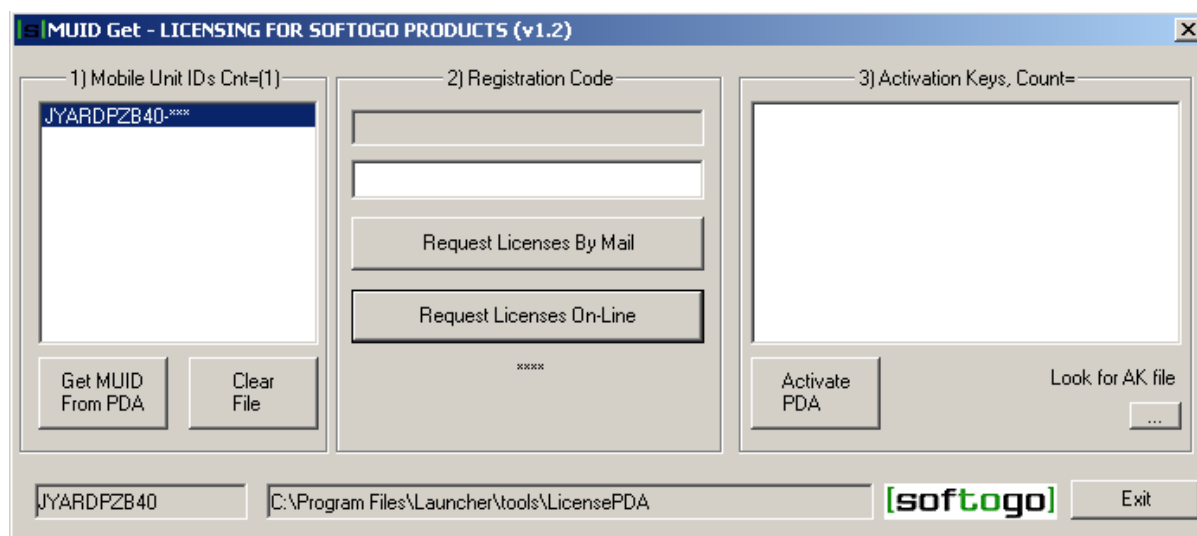


Finally, click on the button “Install Launcher”. IPDA will install the launcher on your device.

	<input type="button" value="Install Launcher"/>	<b>Install Launcher</b> Connect the device by Active Sync, then click in Install. (* ) Launcher and configuration will be installed on the device.
---	---	--

## Licensing the launcher

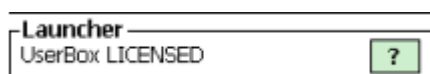
Go to Start Menu -> Programs -> Launcher UserBox -> PDA License.



The licensing procedure requires that the device is connected via ActiveSync.

In order to license the application follow this steps:

1. Get the MUID of the PDA pressing on button "Get MUI from PDA".
2. Input the Registration Code on the PC.
3. Press "On-Line registration" in order to get the Activation Key from Internet.
4. Press "Activate PDA" to send the Activation Key to the PDA and activate the license.
5. Finally when you open the launcher you will see this legend "UserBox Licensed" (see image below)



## Using the launcher

The launcher is organized in tabs. Each tab contains a group of functionalities. Depending on the configuration the user will be able to access more features.

## User/Administrator Modes

The launcher has an “User mode” and an “Administrator mode” that can be customized completely. Even you can configure the user mode almost exactly as the administrator mode. The only difference is that in user mode a password is required to exit the launcher.

See “userOptions” and “adminOptions” on the configuration section.

## Applications tab

The application tab contains:

- Applications configured in “shortcuts” section of the configuration file.
- Wi-Fi signal level.
- Battery level percentage (image and text)
- Date and Time



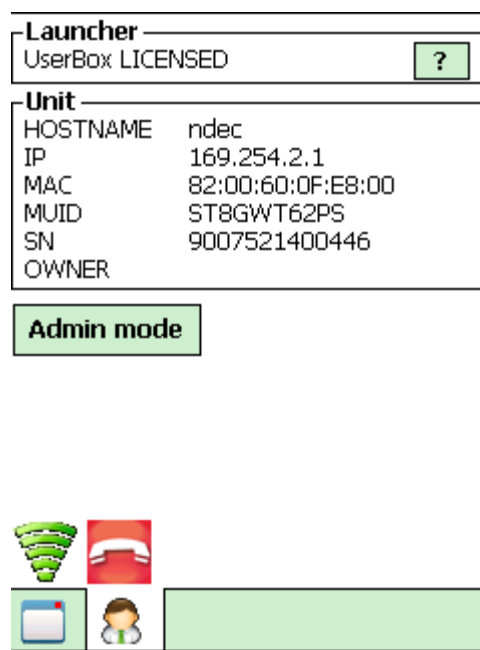
## Administrator tab

This tab contains information about the device.

- Whether the launcher is licensed or not.
- Hostname
- Owner
- IP address
- Mac address
- MUID (mobile unit id)
- ESN (Motorola specific)

The image on right shows the default configuration for the “User mode”.

Depending on the configuration of the “UserOptions” section of the configuration file, you will see one or more buttons on the screen.



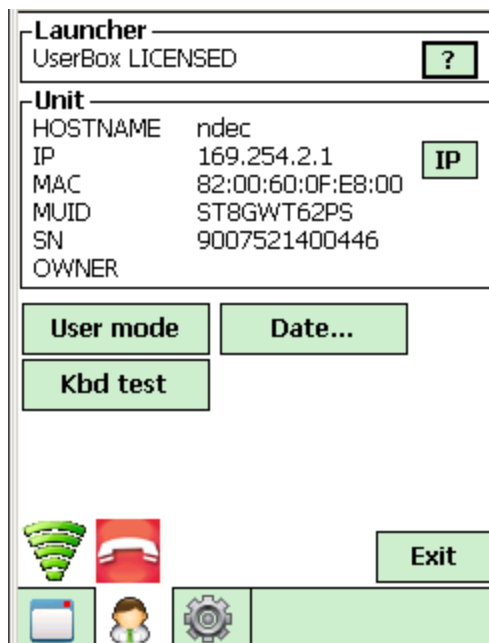
To enter “**Administrator mode**”, click on the button “Admin Mode”. You will be asked for the “administrator password”. See “PasswordAdmin” on Configuration section.

The image on the right shows the default configuration for the “Admin mode”.

On this mode, you will be able to:

- Change Date and Time zone.
- Access Keyboard test.
- Release current IP Address (only DHCP).
- Exit the launcher (no password required).

To go back to “**User Mode**” just press on the button “User Mode”.





## Keyboard test

The keyboard test window let you know whether a specified key was blocked or not. As you press a key the display shows the scan-code of the key and a status (blocked or not blocked).

To block a key configure the scan-code on the “Keyboard blocking” section of the configuration file.

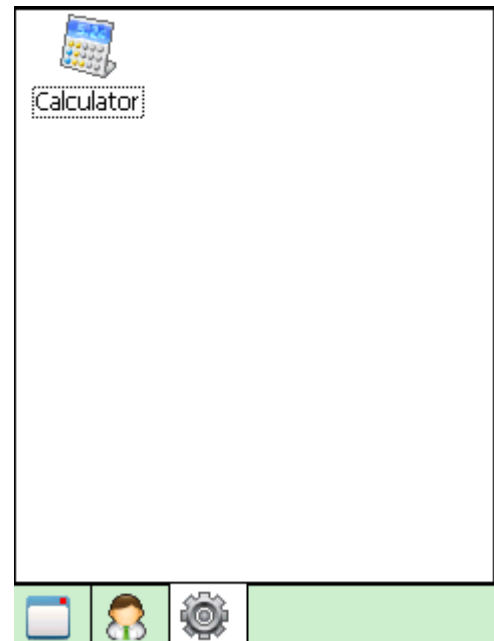


## Tools tab

The tools tab contains the applications configured in the “tools” section of the configuration file.

By default, the tools tab is accessible only in Administrator mode.

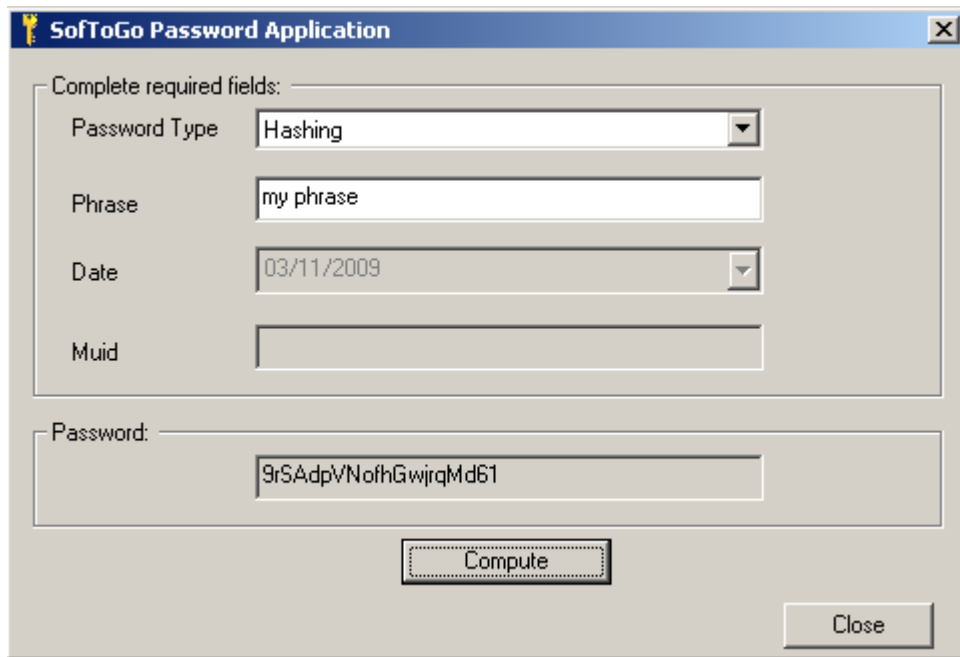
To access this tab in User mode enable “ToolsPage” option in “UserOptions” section of the configuration file.



## Passwords

In order to deny access to the Operating System and deny access to some functionality on the launcher, "PasswordExit" and "PasswordAdmin" are provided.

The launcher provides several types of passwords and almost of them need to be computed using the application StgPassword. It can be found at "Start Menu -> Programs -> Launcher UserBox -> StgPassword". The image below shows the application StgPassword.



Once you chose the password type and completed the required fields, click on the button "compute" to generate a key.

For a detailed description see "Passwords types table" on next page.

## Passwords types table

Id	Type	Description	Key on Configuration file	Real Password	Example of configuration
0	Plain text	The password is plain text.	Your plain text password.	You plain text password.	0, 234
1	Daily password	The password changes every day.	Write "daily".	Use StgPassword application to compute the password.	1, daily
2	Hashing	A hashing is computed by using StgPassword along with a phrase provided by you.	The hash computed by StgPassword.	The phrase you provided to compute the hash.	2, 9rSAdpVNofhGwjrqMd61
3	Phrase only	A key is computed by using StgPassword along with a phrase provided by you.	The phrase you provided to generate the key.	Use StgPassword along with your phrase to compute the password.	3, my phrase
4	Phrase + date	A key is computed by using StgPassword along with a phrase provided by you. The password changes every day.	The phrase you provided to generate the key.	Use StgPassword along with your phrase to compute the password.	4, my phrase
5	Phrase + MUID	A key is computed by using StgPassword along with a phrase provided by you. The password depends on the device. As the MUID of a device is unique, the password is unique too.	The phrase you provided to generate the key.	Use StgPassword along with your phrase to compute the password.	5, my phrase
6	Phrase + date + MUID	A key is computed by using StgPassword along with a phrase provided by you. The password changes every day and depends on the devices. As the MUID of a device is unique, the password is unique too.	The phrase you provided to generate the key.	Use StgPassword along with your phrase to compute the password.	6, my phrase

## Configuration

### User Box main options

---

#### Language

Selects the application's language.

Values:

- en - English.
- fr - French.
- es - Spanish.

#### PasswordExit

Password to exit launcher.

Default value: 0, 307 (i.e. plain text, password is 307)

Syntax: password-type, phrase | password | hash

Password Types:

- 0 - Plain text
- 1 - Daily password
- 2 - Hashing
- 3 - Phrase only
- 4 - Phrase + date
- 5- Phrase + muid
- 6- Phrase + date + muid

Use the utility StgPassword.exe to generate the password or hashes.

#### PasswordAdmin

Administrator's Password. Enter administrator mode.

Default value: 0, 234 (i.e. plain text, password is 234)

Syntax: password-type, phrase | password | hash

Password Types:

- 0 - Plain text
- 1 - Daily password
- 2 - Hashing
- 3 - Phrase only
- 4 - Phrase + date
- 5- Phrase + muid
- 6- Phrase + date + muid

Use the utility StgPassword.exe to generate the password or hashes.

## **BlockSystemKeys**

Blocks combination of keys to deny access to the Operating System (e.g., ctrl+esc opens the Start Menu).

The following combinations of keys are disabled: ctrl+esc, atl+esc, ctrl+tab, alt+tab.

Default value: yes

## **BlockTaskbar**

Denies access to the Windows taskbar.

Although this option is active, the Start Menu is still accessible by some combination of keys (e.g., ctrl+esc).

In order to completely deny access to the Start Menu see option "blockSystemKeys".

### Options:

Behaviour following configuration + OS

- "Locked (0)" - WinCE - The taskbar is totally inactive.
- "Locked (0)" - WM - The taskbar is inactive, the [OK] button is active.
- "Unlocked (1)" - WinCE && WM - The taskbar works as usual.
- "Start Button Locked (2)" WinCE - The taskbar is active, the [START] button is inactive.
- "Start Button Locked (2)" WM - Not applicable for this OS.
- "Lock Regions (3)" WinCE && WM - Locks one or more regions of the taskbar. (see "blockTaskbarRegions" option)

## **BlockTaskbarRegions**

Denies access to one or more regions of the Windows taskbar

To block a region, specify the beginning and the ending of the region in pixels. E.g., "50-100"

Use commas (",") to separate regions. E.g., "0-26,200-240"

Default value: 0-26

## **ShowTaskbar**

Shows/Hides the Taskbar

### Tips:

- In WinCE (4.2, 5.0) OS, the taskbar is in the bottom of the display.
- In PPC2003/WM5/WM6 OS, the taskbar is in the top of the display.

## **DisableActiveSync**

Disables ActiveSync.

Default value: no

## **DisableSDCard**

Disables all SD Cards.

Default value: no

## **IconStyle**

The style of the icons in the Launcher desktop.

### Options:

- Small (0)
- Big (1)
- List (2)

## **ChangeDateTime**

Allows the user to change Date, Time and Time Zone of the terminal.

Keep in mind that the client updates Date and Time each time it connects to the server.

## **LogoOnTop**

### Options:

Yes: displays the Logo (wdp.bmp) at the top of the applications view.

No: displays the Logo (wdp.bmp) at the bottom of the applications view.

### Tips:

- If a bitmap file named 'wdp.bmp' is put in the wdp folder (\flash\wdp), it is displayed in the applications view.
- The bmp file should have the same length that the PDA (i/e 240 pixels).

## **HotKeyCode**

Hot Key (scancode) to perform switch between Launcher applicaitons.

### Tip:

- Set decimal values between 1 to 255 or Hex values 0x01 to 0xFF.

## **HotKeyMode**

The switching mode between applications by Hot Key.

### Options:

- 0-> All Apps. Switch between all applicatons in Launcher.
- 1-> All+Launcher. Switch between all applicatons then show Launcher.
- 2-> Activated+Launcher. Switch between activated applicatons then show the Launcher.

## **ApplicationStartTimeout**

Number of seconds the launcher wait for an application to start. Once this timeout elapsed, the launcher may become the foreground application again.

This option applies to both "shortcuts" and "tools" applications.

## **WatchProcessMode**

Mode in which processes configured in "watchProcess" section are watched.

- Disabled The watcher is disabled.
- Deny Denies execution of the processes configured in the section "WatchProcess".
- Allow Only allows execution of the processes configured in the section "WatchProcess".



### **HardwareButtons**

Enables/Disables Hardware buttons.

The hardware buttons to be enabled/disabled are:

- TALK, END keys. Only on mobile phones.
- VOLUME UP/DOWN keys.

For this option to work use either of the following methods:

1. Unlock the taskbar using the option "BlockTaskbar".
2. Unlock the volume icon on the taskbar using the option "BlockTaskbarRegions".

## User options

---

### **ToolsPage**

Displays tools tab.

### **ExitButton**

Displays "Exit" button.

### **ChangeDateTime**

Allows changing Date, Time and Zone of the device.

### **ReleaseIp**

Allows releasing and renewing the ip address. This will work only when the ip address is obtained via DHCP protocol.

### **KeyboardTest**

Displays the "Kbd Test" button.

Allows knowing the scan-code and blocking status of a key.

## Administrator options

---

### **ToolsPage**

Displays tools tab.

### **ExitButton**

Displays "Exit" button.

### **ChangeDateTime**

Allows to change Date, Time and Zone of the device.

### **ReleaseIp**

Allows to release and renew the ip address. This will work only when the ip address is obtained via DHCP protocol.

### **KeyboardTest**

Displays the "Kbd Test" button.

Allows knowing the scancode and blocking status of a key.

## Shortcuts

### Shortcuts

List of applications allowed to be launched by user.  
The maximum number of shortcuts is 99.

### StartExe

Executable name (full path and file).

Mandatory: Yes

Default value: \Windows\Calc.exe

Tip:

- May be an exe, a link or a registered document type file.

### Name

Display name of this application.

Max: 30 characters

Mandatory: Yes

Tip:

- This label is displayed to user in main dialog.

### Args

Program arguments to be passed in command line.

Max: 128 charecters

### Version

Program version.

This label is displayed to user in main dialog

Max: 128 characters

DefaultValue: 1-0-0

Tips:

- This label is displayed to user in main dialog

### Autostart

The application is executed when the Launcher is started.

### Icon

Complete path to an image to be displayed as the application icon.

Use this option if you want to display an alternative image, other than the image of the "startExe" application.

Tips:

- The image can be either a 16x16 or 32x32 pixels BITMAP file (.bmp).
- The size of the image must match the "iconStyle" option selected.
- "Big" iconStyle option is compatible with 32x32 pixels images, whereas "Small" and "List" options are compatibles with 16x16 pixels images.

### Options

Specifies a set of options to execute before launching the application.

Use a comma (",") to separate values. E.g : sip, notaskbar



## Values

- SIP : show the "SIP panel" (virtual keyboard)
- NOTASKBAR: hide the taskbar

This option is valid only when "showtaskbar" option is disable.

## Schedule of WireLess Deployer scripts

---

### **ScheduleScript**

This section allows to eschedule Wdp scripts.

Each schedule has a fixed time and a script name.

### **Time**

Specifies the time (in HH:MM format) in which the script is executed.

Validation: PUNCT,DIGIT

Example: 10:30

### **Script**

Specifies the complete path to the wdp script to be executed.

Validation: ASCII

## Keyboard blocking

---

### **KeyCode**

Scancode of the key to be blocked.

The scancode may be in hexadecimal ro decimal value.

## Process Watcher

---

### **WatchProcessName**

Process name or complete path to a process to be watched for.

The watching mode depends on the "WatchProcessMode" configuration.