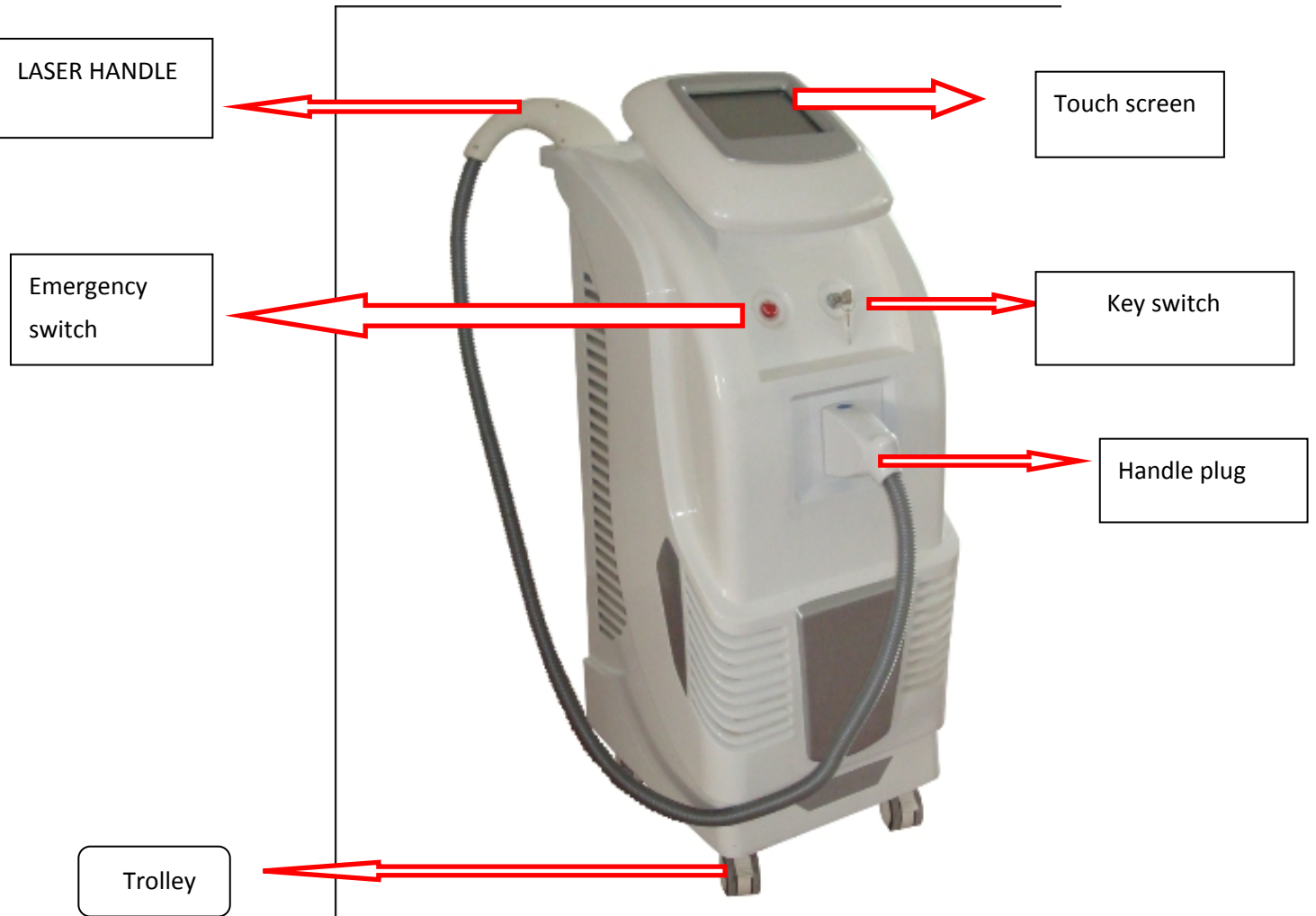


---

# The user manual of Diode laser hair removal ---MB808

---

## 1 SYSTEM DESCRIPTION





**System MB808 include**

**1) Main electronic circuit ,control screen circuit ,cooling water system**

2) laser treatment handle

3) display screen

Touch screen

4) emergency stop button

When something happen with machine .you can push the emergency button

To stop the machine at once .

5) key switch

Turn on the system by Clockwise

Turn off the system by Counterclockwise

6) power core

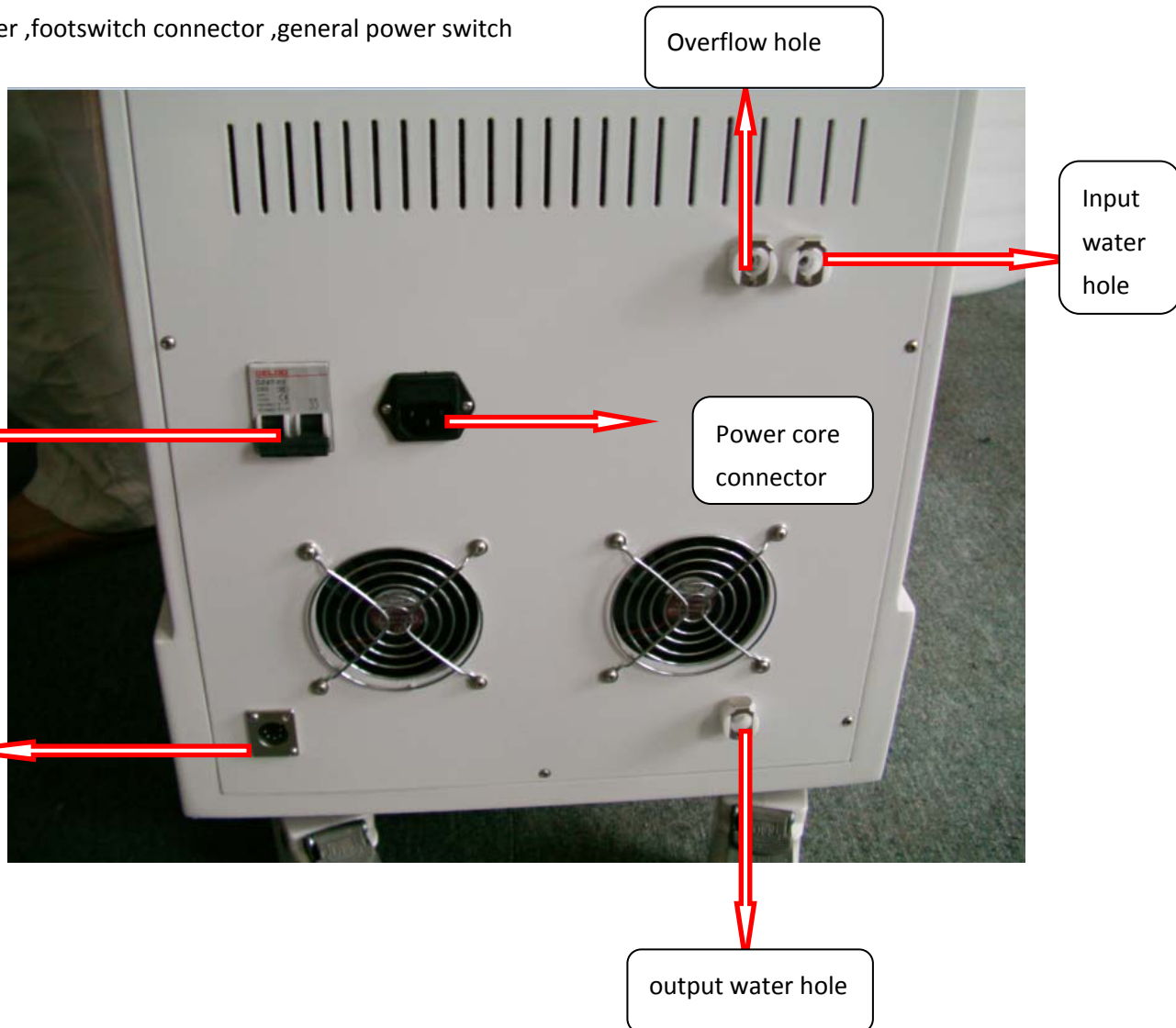
Please confirm your local voltage supply is 110V OR 220V

7) footswitch

Footswitch can control the laser shot

8) the back of machine

Including : power core connector, overflow hole, outlet ,output water hole. Input water ,footswitch connector ,general power switch





## 2 the menu

There will be shown “welcome” interface in the screen after you turn on the machine.(as picture 1)

The system will show “enter ” after you press the button on laser handles ,at the same time you will hear a sound when you press the buttons ,after that .you will see picture 2



(picture1)



Touch  
"enter" to main  
menu (picture 3)

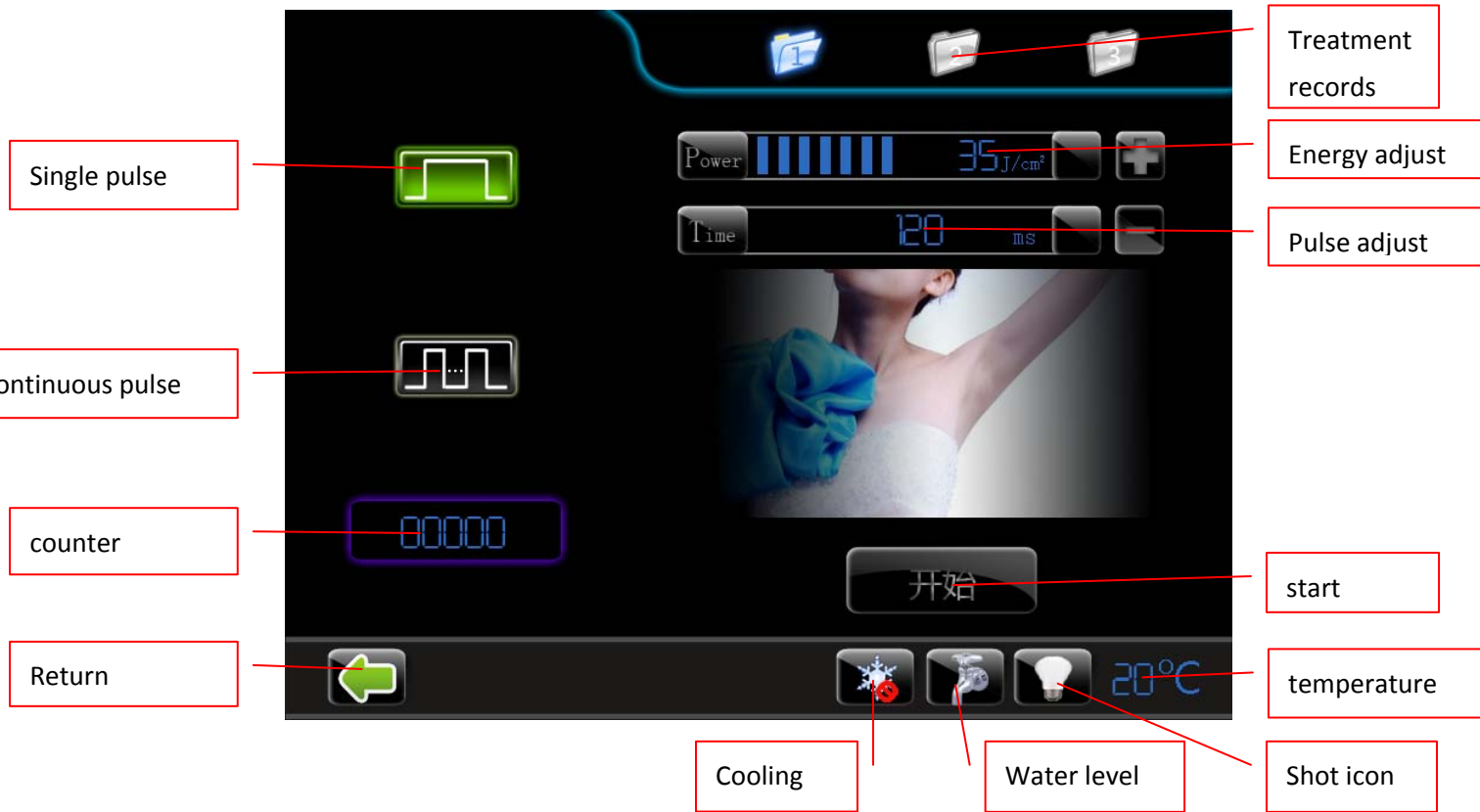
(picture)

### 1. Main menu

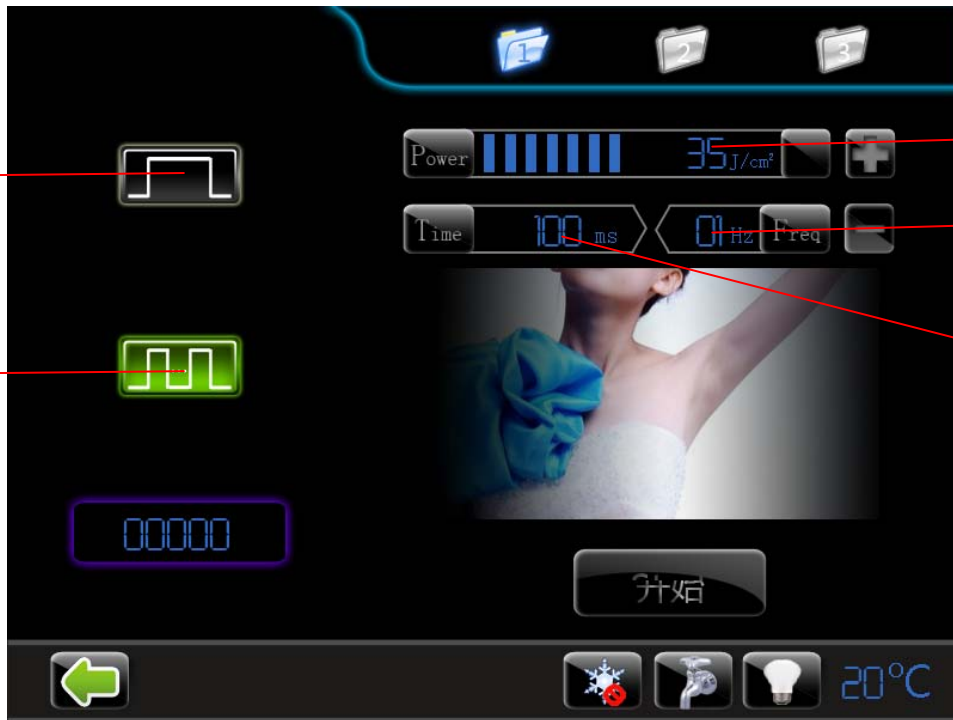


(picture 3)

## 2. Operation menu




(picture 4 single pulse)



( picture 5 continuous pulse mode )

Default continuous pulse mode after entering into operation menu , and read the last

treatment records (default  )

### 1) treatment records

Treatment records include parameter setting . energy adjust . pulse .frequency of each mode

### 2) Cooling

Cooling include 6 level .

0 level for no cooling ,5 level for biggest cooling .

Below is the picture icon of each cooling level (picture 6)



( picture 6 )

---

### 3) water level

Water level show the water condition at current

### 4) temperature

Temperature show the water temperature in the water tank (cycle water temperature )

When the water temperature is higher than the alarm temperature (which was set in the system setting ), the temperature number will become red as well as alarm sound ,

at this time . the machine cant enter into working condition ,

if the machine is under working . it will be out of working automatically

### 5) Return

return to main menu

### 6) mode

Mode include single pulse and continuous mode .

The selected model is highlighted in green

Single pulse mode :

The treatment head will make a shot when you press the button each time.

The shot time depends on the pulse time

pulse width and energy have the following constraint relations

Single pulse mode		
Energy (J/cm <sup>2</sup> )	10-54	55-100
Pulse (ms)	10-1500	10-400

The continuous mode :

The treatment head will shot continuously when you press the buttons without release ,according to the frequency and pulse . it will stop to shot when you release the buttons . pulse width and energy have the following constraint relations



Continuous mode		
pulse (ms) / frequency (Hz) \ energy (J/cm <sup>2</sup> )	10-54	55-100
1	10-800	10-400
2	10-400	10-200
3	10-260	10-130
4	10-200	10-100
5	10-160	10-80

For example . under the continuous mode. When the energy range is 55-100 J/cm<sup>2</sup>

the frequency is 2MHZ, The pulse range can be only 10-200ms, the constraint relations is controlled by the soft automatically

### 7) parameter adjustment

only need to adjust the energy . pulse. frequency ( for continuous mode )

adjustment way : touch the relevant parameter which need to adjust . when the parameter change in white color . and then touch “+” / “-” for increase and reduce

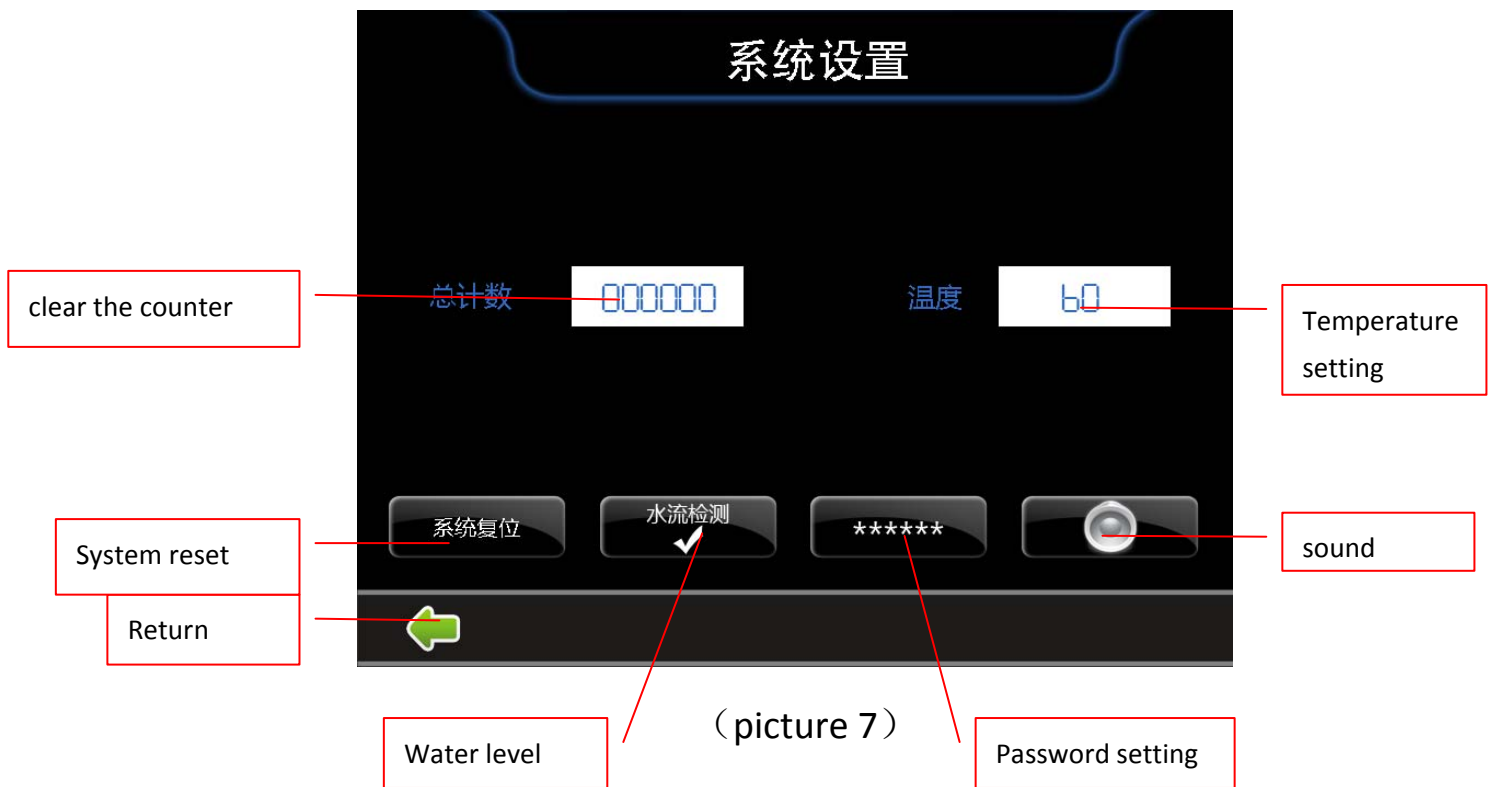
### 8) start /stop

touch start to enter into work status after setting the parameter well .

and the “start” change into “stop” , at this time . you can press the button for treatment.

It will be stop to work when you touch “stop”, that mean the machine is standby

## 3. system setting



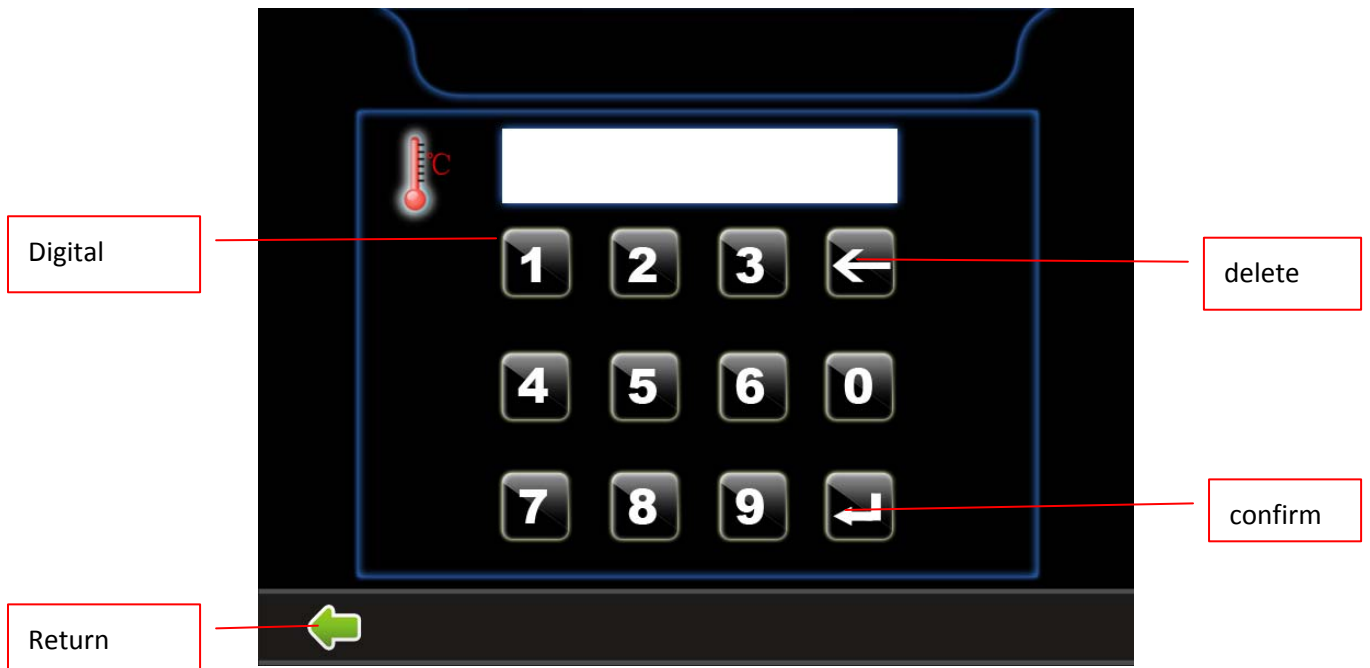
### 1) clear the counter (counter zero)

When the total counter is not 0. You can enter into the (clear the counter area) when you touch counter . need to input the correction password to clear the zero .(as picture 8)



(picture8)

## 2) Temperature setting



Touch the temperature setting , enter into setting interface as picture 9.

( picture 9 )

Input 2 digital number . touch “confirm” to complete the setting . and the touch “return”

## 3) system reset

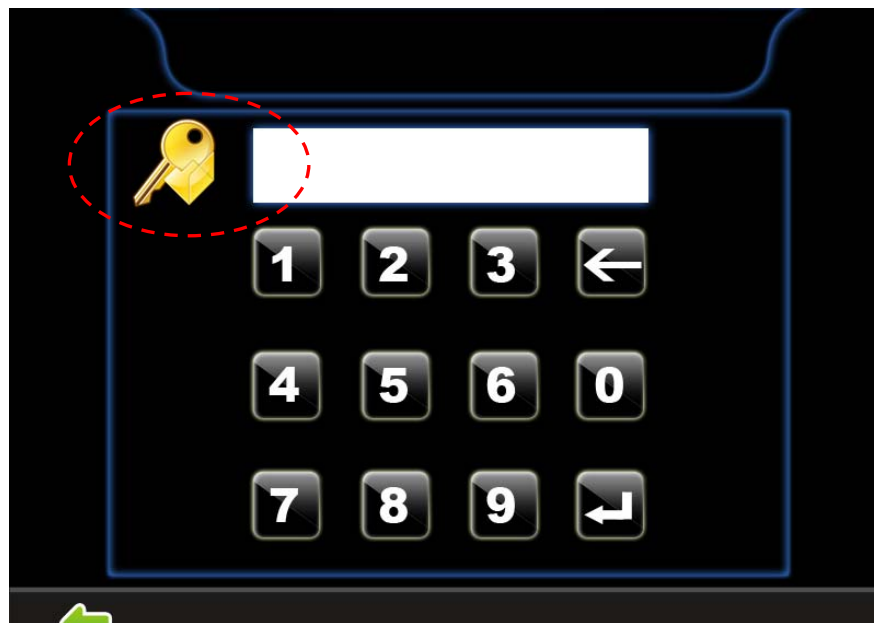
make all of the parameter recover to the factory default

but the counter will not change .

## 4) water level and touch button sound

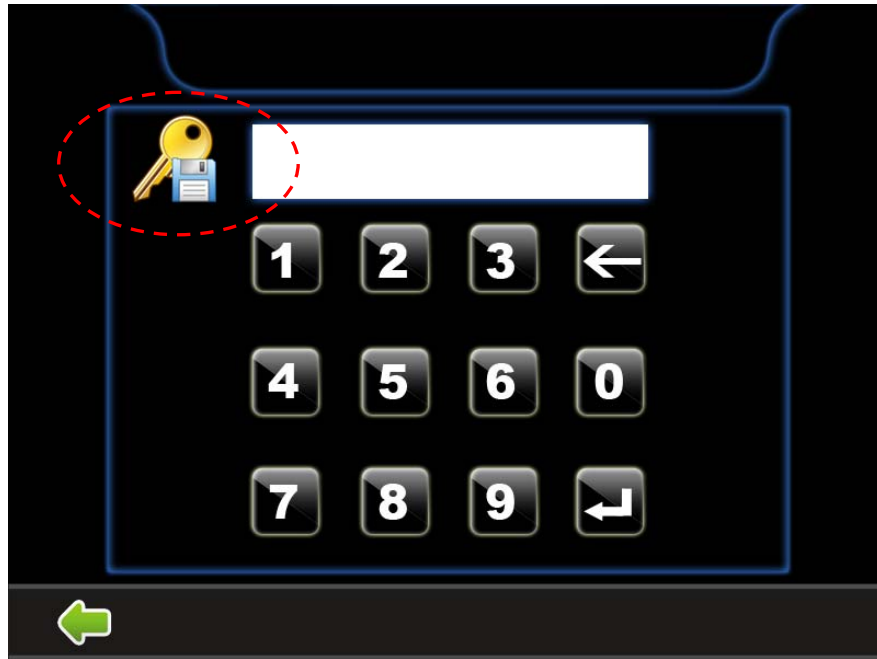
## 5) password setting

touch password setting to enter into password verification interface (picture 10)



---

After you enter into the correction password. And then you can change the new password as picture 11



( picture 11 )

## Contact us

### Beijing Medical Beauty Commerce Co .,ltd

We mainly produce medical surgery Laser (co2 fractional laser ,co2 laser, Super Pulse Laser Systems ,ND-YAG Q switch laser tattoo removal ,laser hair removal, Er laser, soft laser

---

etc); IPL photo rejuvenation; RF(monopolar, bipolar ,tripolar multi-polar radio frequency) ,e-light ,PDT skin care, ultrasonic vacuum technology cellulite reduction,teeth whitening equipment etc , we also provide various kinds of laser component etc.

we offer OEM service . we always offer best price with high quality product

Address :

Yard 6,East Rd.,Nanchang 1st Village, Jiugong Town, Daxing District, Beijing, China

Tel : + 86-10-13161280838 86-10-67506021

After sales : + 86-10-15330058379 86-10-57239379

Email : [admin@ipl-rf.com.cn](mailto:admin@ipl-rf.com.cn) MSN : [ipllaser@hotmail.com](mailto:ipllaser@hotmail.com)

Skype : [Beijingmedicalbeauty](https://www.skype.com/people/Beijingmedicalbeauty)

Website : [www.rf-laser.com](http://www.rf-laser.com) [www.ipl-rf.com.cn](http://www.ipl-rf.com.cn)