

# TECHNICAL FILE

**ARTELLI® FULLFACE-MASK : MARS**

**Article No. : 1022244**

**Technical file No. : ABS-002/2012**

**Date : 05-11-2012**

**Brand :**



**Artelli® is a registered trademark of AB Safety nv**

**Manufacturer :  
AB-Safety nv  
Prins Boudewijnlaan 5  
B-2550 Kontich  
Belgium**

## **Index**

<b>Introduction AB Safety</b>	<b>page 3</b>
<b>Contract D.P.I and AB Safety nv</b>	<b>page 4</b>
<b>List of identical products</b>	<b>page 6</b>
<b>User manual (English version)</b>	<b>page 7</b>
<b>Packaging</b>	<b>page 16</b>

## Introduction AB Safety.

AB Safety nv is the OWN Brand manufacturer of breathing protection equipment by extension certificates of identical PPE's produced, CE Type certified and quality assured according ART 11B of the directive 89/686/EEC, by the manufacturer DPI S.r.l, Via di Cervara 42 00155 Roma Italy.

### Address :

**AB Safety nv**  
**Prins Boudewijnlaan 5**  
**B-2550 Kontich**  
**Belgium**

Tel. : 00 32 3 820 79 79

Fax : 00 32 3 828 53 68

E-mail: [info@ab-safety.eu](mailto:info@ab-safety.eu)

Web : [www.ab-safety.eu](http://www.ab-safety.eu)

VAT : No. BE-0424 935 818

### Contact 1 :

Wilfried Verstraeten, E-mail: [Wilfried.verstraeten@vdp.com](mailto:Wilfried.verstraeten@vdp.com) , Tel.: 0031 622991477

### Contact 2 :

Karel Thysebaerd , E-mail: [Karel.thysebaerd@ab-safety.eu](mailto:Karel.thysebaerd@ab-safety.eu) , Tel.: 0032 3 820 95 33

Director AB Safety : Stefan Vandeputte, E-mail: [Stefan.Vandeputte@VDP.com](mailto:Stefan.Vandeputte@VDP.com)

### Logo AB Safety nv :

The logo for AB SAFETY features the letters 'AB' in a large, bold, sans-serif font. The letter 'A' is black with a red horizontal bar across its middle. The letter 'B' is solid black. To the right of 'AB', the word 'SAFETY' is written in a smaller, bold, black, sans-serif font.

### **Trademark**

Artelli® is a registered trademark of AB Safety nv

### Logo Artelli®:



This logo will be used on filters and masks as manufacturers logo.

# Contract AB-Safety nv and DPI S.r.l

1/2

Roma 04/10/2012

Subject: Extension for Artelli brand of AB Safety nv for respiratory protection equipment manufactured by DPI Srl and listed below :

AB code	AB Product name	DPI code	DPI product name	CE certificate number	CE certificate date	Issued by
1022243	HALFGELAATS-MASKER JUPITER EPDM (Halfmask)	4336 2107	POLIMASK 2000 ALFA	<b>CE PPE/AT n° 471-02 Prot. 1078/02</b>	<b>23.07.2002</b>	<b>ITALCERT</b>
1022244	VOLGELAATS-MASKER MARS (Fullfacemask)	4333 2030	C607 Selecta	CE PPE/AT n° 426-01 Prot. 1595/01	<b>12.06.2001</b>	<b>ITALCERT</b>
1022247	FILTER URANUS P3	4341 0590	DIRIN 230 P3	CE PPE/AT n° 723-07 Prot. 1024/07	<b>05.06.2007</b>	<b>ITALCERT</b>
1022248	URANUS A2	4341 0600	DIRIN 230 A2	LIBERATORI A n° 1560/05-RC/er <b>CE 941059</b>	<b>21.10.2005</b> <b>27.06.1994</b>	<b>ITALCERT</b> <b>BIA</b>
1022249	FILTER URANUS ABE2K1	4341 0631	DIRIN 230 A2B2E2K1	LIBERATORI A n° 1560/05-RC/e <b>CE PPE/AT N° 001-94 Prot. 366/94</b>	<b>21.10.2005</b> <b>26.10.1994</b>	<b>ITALCERT</b> <b>ITALCERT</b>
1022250	FILTER URANUS ABEK1P3	4341 0632	DIRIN 230 A2B2E2K1 P3	<b>CE PPE/AT n° 779-08 Prot. 0677/08</b>	<b>23.05.2008</b>	<b>ITALCERT</b>

DPI srl declare:

- that all DPI models, for which an extension of the certificate in the name of AB Safety nv (Artelli) is requested, are identical to the models produced by DPI srl, which they derive from, as proved by the related certificates shown in the above mentioned table.

DPI srl commit themselves to:

- communicate AB Safety nv (Artelli) any changes to the product which may affect the validity of both CE certificates and the verification procedure under Art. 11 ° of the Directive 89/686/EC (valid for PPE's of category III);
- sell AB Safety nv (Artelli) those items only, which are complying with the ones subject of the related certificates in the name of AB safety nv (Artelli);

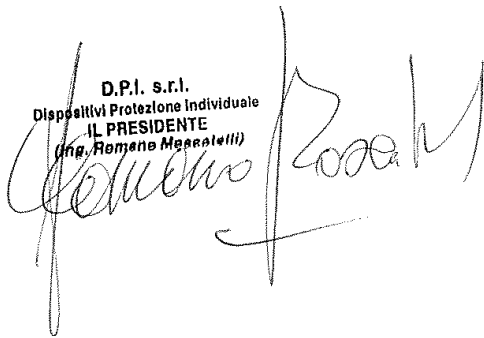
- communicate AB Safety nv (Artelli) and the Notified Body any change to the product before putting it in production.

DPI Srl and AB Safety nv (Artelli) undertake likewise to communicate each other any incidents which may have occurred to the products covered by this Agreement.

in witness whereof

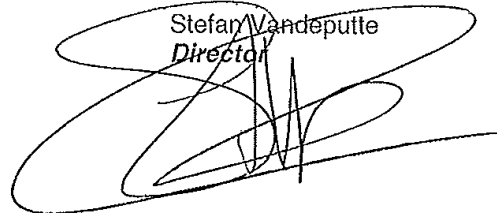
For DPI Srl

D.P.I. s.r.l.  
Dispositivi Protezione Individuale  
IL PRESIDENTE  
(Ing. Romano Maccatelli)



For AB Safety nv

Stefan Vandeputte  
Director



## List of identical products (cross reference)

AB code	AB Product name	DPI code	DPI product name	CE certificate number	CE certificate date	Issued by
1022243	HALFGELAATSMASKER JUPITER EPDM	4336 2107	POLIMASK 2000 ALFA	<b>CE PPE/AT n° 471-02 Prot. 1078/02</b>	<b>23.07.2002</b>	<b>ITALCERT</b>
1022250	URANUS ABEK1P3	4341 0632	DIRIN 230 A2B2E2K1 P3	<b>CE PPE/AT n° 779-08 Prot. 0677/08</b>	<b>23.05.2008</b>	<b>ITALCERT</b>
1022244	VOLGELAATSMASKER MARS	4333 2030	C607 Selecta	<b>CE PPE/AT n° 426-01 Prot. 1595/01</b>	<b>12.06.2001</b>	<b>ITALCERT</b>
1022247	URANUS P3	4341 0590	DIRIN 230 P3	<b>CE PPE/AT n° 723-07 Prot. 1024/07</b>	<b>5.06.2007</b>	<b>ITALCERT</b>
1022249	URANUS ABE2K1	4341 0631	DIRIN 230 A2B2E2K1	<b>LIBERATORIA n° 1560/05- RC/e CE PPE/AT N ° 001-94 Prot. 366/94</b>	<b>21.10.2005</b>  <b>26.10.1994</b>	<b>ITALCERT</b>  <b>ITALCERT</b>
1022248	URANUS A2	4341 0600	DIRIN 230 A2	<b>LIBERATORIA n° 1560/05- RC/er CE 941059</b>	<b>21.10.2005</b>  <b>27/06/1994</b>	<b>ITALCERT</b>  <b>BIA</b>

## User instruction (English version)



**NL** ARTELLI® - MARS VOLGELAATSMASKER

**FR** MASQUES COMPLETS MARS - ARTELLI®

**DU** ARTELLI® - MARS VOLLMASKEN

**EN** ARTELLI® - MARS FULL FACE MASK

**GEBRUIKSAANWIJZING  
MODE D'EMPLOI  
GEBRAUCHSANLEITUNG  
INSTRUCTIONS FOR USE**



**MA1.DD.1\_1**

**Artelli® is a registered trademark of AB-Safety nv**

**INDEX**

- 1. General information**
- 2. Applicable standards, field of application, cautions and warnings**
- 3. Marking**
- 4. Operating principles**
- 5. Mask Components**
- 6. Donning and tightness test**
- 7. Maintenance, cleaning and disinfection**
  - 7.1 Inspection and periodic maintenance
  - 7.2 Cleaning
  - 7.3 Disinfection
- 8. Tightness check**
  - 8.1 Performance tester
  - 8.2 Testing
  - 8.3 Leak tightness of mask and exhalation valves
- 9. Storage**
- 10. Specific maintenance instructions and replacement of spare parts**
  - 10.1 Replacement of visor
  - 10.2 Replacement of the connector
  - 10.3 Replacement of exhalation valve assembly
    - 10.3.1 Replacement of exhalation valves
  - 10.4 Replacement of inhalation valve
  - 10.5 Replacement of inner mask
- 11. Reference numbers for orders, spare parts, accessories**

**1. GENERAL INFORMATION**

AB Safety nv has carefully worded and edited this instruction manual. However, in no event shall AB Safety nv be liable for any damage caused by misunderstandings of the text, misprints or incompleteness.

ARTELLI® is the registered trademark of the personal protective equipment manufactured by AB Safety nv. Technical alterations of this equipment are not allowed.

- 1.1. Before using the MARS full face masks, users must ensure that all the instructions in this manual are read, understood and followed.
- 1.2. ARTELLI® full face masks have been specifically designed for the use described in this manual.
- 1.3. Repair and replacement of spare parts must be carried out by trained personnel, using original ARTELLI® spare parts.
- 1.4. It is advisable for all periodic mask testing to be carried out by the technical Service of AB Safety nv or by other trained personnel qualified for this purpose.
- 1.5. The AB Safety nv standard warranty indicates the full extent of the liability of AB Safety nv. AB Safety nv will not accept liability for any damages caused by:
  - a) testing which has not been carried out;
  - b) testing and maintenance improperly carried out by persons other than those qualified to do so by AB Safety nv;
  - c) improper usage of the mask.



- 1.6 AB Safety nv will not accept liability for any damages caused by failure to abide by the aforementioned provisions.
- 1.7 For everything which has not been mentioned above, the general conditions of this warranty apply. In the event that you don't know the conditions of the contract, AB Safety nv will send further information upon written request.

## **2. APPLICABLE STANDARDS, FIELD OF APPLICATION, CAUTIONS and WARNINGS**

MARS full face masks are PPE belonging to the III category according to the European Directive 89/686/CEE and subsequent amendments, and they conform to the requirements specified in the European standard EN 136:1998 **CL2**. The MARS full face masks are equipped with a standard threaded connection according to the European standard EN 148-1.

Testing according to the relevant Norms, certification and authorization to CE marking have been performed by the following Notified Body:

### **Italcert - Viale Sarca, 336 - 20126 Milano - Italia (notified body n. 0426)**

The CE marking CE 0426 on the mask face piece indicates the notified body carrying out the production control as provided in art. 11/B of European Directive 89/686/EEC :

### **Italcert - Viale Sarca, 336 - 20126 Milano - Italia (notified body n. 0426)**

The instructions for use of filters and respiratory equipment, as well as the safety standards and regulations issued by the competent authority, must be strictly followed.

Respiratory protective devices must be used by personnel in good health and trained in the use of this kind of equipment.

Users must be beardless and without sideboards or moustaches as these interfere with the face piece seal, thus impeding adequate seal tightness on the face.

The users of the MARS full face masks must ensure that the highest concentrations of contaminants in the atmosphere are not exceeded. The permissible exposure limits are indicated in the manual containing the instructions for use of filters and self-contained breathing apparatuses used with the mask.

### **Specific conditions of use**

When the hazards potentially present in the workplace call for respiratory system protection and use of protective equipment, the compatibility of these devices with the mask must be carefully tested. These additional protection measures must not jeopardize the full effectiveness of the respiratory protective equipment.

The hazards potentially present in the workplace can be the following:

- liquid or gaseous substances which are harmful in contact with skin;
- toxic substances which are irritating to skin;
- radiations;
- mechanical stress;
- explosions in the atmosphere;
- oxygen-enriched atmosphere.

The technical services of AB Safety nv are at your disposal for any assistance, explanation, advice or information you might need.

### **3. MARKING**

MARS full face masks are CE marked as provide in the European Directive 89/686/EEC and subsequent amendments, since the tested samples met the requirements EN 136:1998 and EN 148-1:1999

#### **Marking on MARS :**

<b>CE 0426</b>	on the left side of the faceblank,
<b>MARS</b>	on the connector housing,
<b>EN 136:98 CL2</b>	on the connector. Relevant EN Standard and mask class.

#### **Manufacturer, Year of production, CE Marking**



Manufacturers logo

**XX** Year of production (2 digits)

**CE 0426** CE Marking

**0426** Identification number Notified Body carrying out production control in conformity with art. 11 of the European Directive 89/686/EEC

**CL 2** Class of full face mask

### **4. OPERATING PRINCIPALS**

The air inhaled through the inhalation valve in the connecting piece is fed into the mask and flows in the inner side of the visor thus preventing misting.

The air enters the inner mask through the flash back check valves and after use by operator, is exhaled through two exhalation valves.

### **5. MASK COMPONENTS**

Mars Full face masks are made up by the following components:

- 5.1 Faceblank
- 5.2 Inner mask with check valves
- 5.3 Visor
- 5.4 Exhalation valve (two pieces)
- 5.5 Connector piece
- 5.6 Head harness with 5 straps

## **6. DONNING AND TIGHTNESS TEST**

- 6.1 Use the adjustable buckles to loosen the harness completely ;
- 6.2 Loosen the two straps of the neck harness ;
- 6.3 Place the mask in front of the face holding it by the back of the neck harness, place the chin in the special groove on the mask and put the harness over the head;
- 6.4 Pull the straps back in the sequence “Neck”, “Temple” and “Front”. The neck and temple straps of the harness should be pulled back preferably in pairs and using both hands. Then pull the front straps. In the ideal position of the harness, the edge of the mask seal is felt to exert a uniform pressure on the face.
- 6.5 The best way of donning the mask is to adjust the harness straps pulling them perpendicularly to the mask itself .
- 6.6 After donning the mask and before use, carry out a tightness test by closing the input connector with the palm of the hand and making sure the mask fits well onto face. No air must be felt passing into the mask while inhaling. This tightness test must be carried out 2 - 3 times. The mask can be used only after passing the tightness test .
- 6.7 In order to take the mask off, loosen the straps in the same sequence followed in the donning procedure (see 6.4).  
Push the buckles forward with your thumbs. Slip off the mask from the chin and then lift it from the head.

## **7. MAINTENANCE, CLEANING AND DESINFECTION**

To keep MARS masks in full working order, it is necessary that maintenance, cleaning and disinfection procedures are periodically carried out.

### **7.1. Inspection and periodic maintenance**

The user must ensure that the respiratory protective device is periodically checked as indicated in the user’s manual supplied by the manufacturer.

The numbers indicated in the table have the following meaning:

- 1) Sample testing can be carried out only if the device is still in its original hermetic packing;
- 2) Spare equipment.

Frequency						
Operation to be carried out	Before use authorisation	Before each use	After use (*)	Every 6 months	Every 2 years	Every 6 years
Cleaning & disinfection			<b>X</b>	<b>X1</b>		
Practical use and tightness check	<b>X</b>			<b>X1</b>	<b>X</b>	
Valve replacement. (Manufacture date printed in valve center)					<b>X</b>	<b>X2</b>
Gasket replacement					<b>X</b>	<b>X2</b>
Check thread. (With go/no go user)		<b>X</b>				<b>X</b>
Test carried out by user		<b>X</b>				

After the replacement of spare parts, which could modify the leak tightness, a total mask testing is needed.

(\*) The masks which are regularly used must be cleaned and disinfected frequently in order to insure an adequate protection to the user. The device must be cleaned after every use because sweat and saliva depositing on the valve could jeopardize its proper operation. In order to clean and disinfect the mask, it is possible to disassemble the inner mask and the exhalation valves.

### **7.2 Cleaning**

The mask must be cleaned every time it is used. After disassembling the component parts, if necessary, clean thoroughly with tepid water containing a light detergent. Never use solvents! After cleaning it thoroughly, rinse under running water and hang up to dry in the open air or in special cupboards. Avoid exposure to direct solar heat and temperatures above 50 °C.

### **7.3 Disinfection**

After cleaning the mask thoroughly, disinfect it in a container. Only recommended disinfectants can be used (BAC OFF Liquid disinfectant code n. 44370360). Follow the instructions for use as indicated by the manufacturer. Finally rinse under running water and dry, following the instructions in point 7.2.

## **8. TIGHTNESS CHECK**

In the event the mask has been disassembled in order to be cleaned or to have some component parts replaced, a tightness check must be carried out. Before carrying out the tightness check, make a visual check. Check particularly the valves, valve seats and gaskets, in order to make sure they are clean. Defective parts must be replaced. Masks which failed the tightness test **cannot** be used.

### **8.1 Performance tester**

The performance tester is made up of an inflatable rubber balloon as a dummy test head, a connecting piece (mouthpiece connector), a connecting hose, airtight seals to close the exhalation valves and easily purchasable control equipment to create and control a negative and positive pressure inside the mask. The performance tester can be supplied by AB Safety nv..

### **8.2 Testing**

Put the rubber balloon between the faceblank and the harness and inflate it in order that the face piece seal of the mask is properly adjusted on the surface of the balloon. If necessary, tighten the harness straps. Screw the connecting piece on the face piece connector and connect the hose to the performance tester. Use of the performance tester controls is covered its user's manual.

### **8.3 Leak tightness of mask and exhalation valves**

The mask and exhalation valves pass the tightness test when, with the exhalation valve previously damped, after a 10 mbar (1000 PA) negative pressure is created inside the mask, the pressure change is not more than 1 mbar (100 PA) per minute. After testing, remove the mask from the rubber balloon and dry if necessary. The mask can only be used after passing the tightness test.

## **9. STORAGE**

The mask must be stored in a cool dry place, protected from cold and humidity, the rays of sun, intense heat and corrosive substances which can damage its materials. The rubber parts must not be submitted to prolonged tensions and pressures to avoid distortion by compression. The masks must be stored in their cases or in special cupboards.

## **10. SPECIFIC MAINTENANCE INSTRUCTIONS AND REPLACEMENT OF SPARE PARTS**

When the mask is disassembled in order to be cleaned and disinfected, it has to be reassembled following the same procedure of spare parts replacement unless differently indicated. Make sure that all component parts are correctly assembled.

### **10.1 Replacement of visor**

Loosen the two screws on both sides of the frame. Remove the frame and then the visor from the groove of its seal. Check that the groove is not dirty or damaged and, if necessary, replace it. Place the new visor on the groove of the face piece seal in order that the markings at the centre of the visor edge and the ones on the faceblanks coincide. Moisten with water or a neutral

detergent the groove of the face piece seal, from the inside, and the frame from the outside. Join the two halves of the frame and screw tightly.

### **10.2 Replacement of connector**

Remove the clamping ring without damaging the faceblank and the connector to be replaced. Take the connector to be replaced out from the face piece and insert the new one in order that the centering guides of the rubber piece and the input connector slots coincide. Remind to connect it with the inner mask in the same way as it was before disassembling. Reassemble the clamping ring and tighten it correctly again, by using a special tool, in order to insure a perfect leak tightness.

### **10.3 Replacement of exhalation valve assembly**

Remove the inner mask from the housing of the exhalation valve assembly. Loosen the synthetic resin clamping rings and remove from the face piece both valve assemblies to be replaced. Make sure that the valve-housing groove is not dirty or damaged and clean it, if necessary. Insert the new spare parts, connecting them carefully to the inner half mask. Reassemble the clamping rings and tighten them strongly by using a special tool in order to ensure an appropriate tightening.

#### **10.3.1 Replacement of exhalation valves**

Remove the cap from the exhalation valve assembly. Remove the valve from its seat by pulling it with thumb and forefinger. Check that the valve holder and the housing are not dirty or damaged, clean them, if necessary. Insert the valve-stem in the central hole of the seat and pull it strongly from the inside of the faceblank until a click is heard. Replace the cap.

#### **10.4 Replacement of inhalation valve**

Hold with your thumb and forefinger the valve seat, which is also a gasket, and pull. In this way the inhalation valve is free and can be easily removed from the pin. Check the rubber seat, if it's worn-out or damaged, it must be replaced. Assemble the new valve on the pin and insert the seat in its place, pressing along the edge. Make sure that all the component parts are correctly assembled.

#### **10.5 Replacement of Inner mask**

Pull the inner mask to be replaced in order to detach it from the face piece. Take the new inner mask, complete with flash back check valves, and insert the edge of the central hole in the internal groove of the connector. After checking the correct centered position of the inner mask itself, insert the edge of the side holes in the grooves on the exhalation valve housing seats.

## **11. REFERENCE NUMBERS FOR ORDERS**

Article No.	Description
1022244	Full face mask "MARS "(EN 136:1998, Class II)



**Prins Boudewijnlaan 5  
B-2550 Kontich  
Belgium**

**T: +32 3 820 79 79**

**F: +32 3 828 53 68**

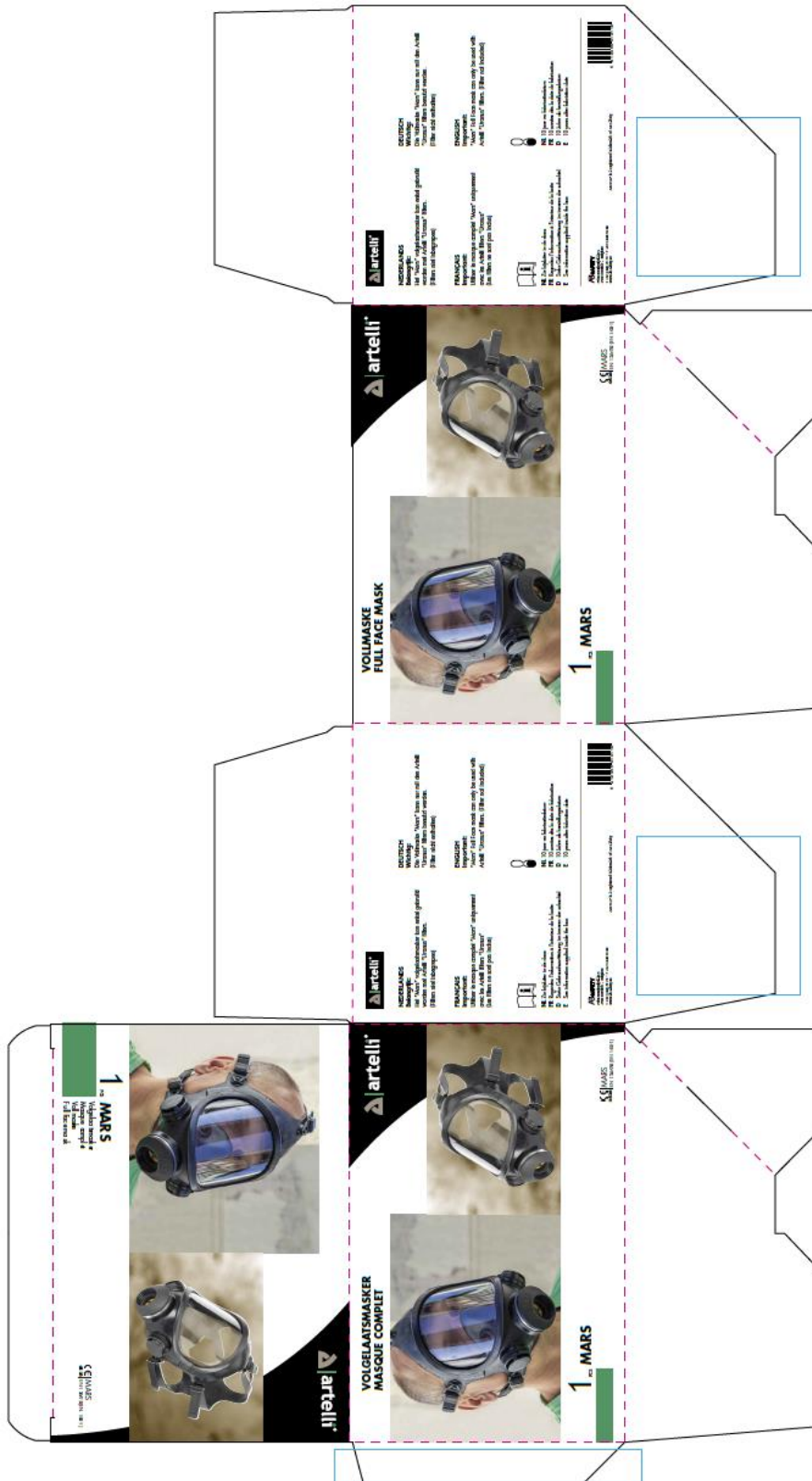
[info@ab-safety.eu](mailto:info@ab-safety.eu)

[www.ab-safety.eu](http://www.ab-safety.eu)

Artelli® is a registered trademark of AB Safety nv.

MA1.DD.1\_1:20121025

# Packaging : FULLFACE MASK MARS



\*See also separate file : 1022244-VP-FULL FACEMASK\_MARS\_V2-SEPT 2012 for details



**VOLGELAATSMASKER  
MASQUE COMPLET**



**artelli®**

**1** PCS **MARS**

CE MARS  
0426 | EN 136:98 (EN 148:1)

**NEDERLANDS**  
**Belangrijk:**  
Het "Mars" volgelaatmasker kan enkel gebruikt worden met Artelli "Uranus" filters.  
(Filters niet inbegrepen)

**FRANCAIS**  
**Important:**  
Utiliser le masque complet "Mars" uniquement avec les Artelli filters "Uranus"  
(Les filters ne sont pas inclus)

**DEUTSCH**  
**Wichtig:**  
Die Vollmaske "Mars" kann nur mit den Artelli "Uranus" Filtern benutzt werden.  
(Filter nicht enthalten)

**ENGLISH**  
**Important:**  
"Mars" Full Face mask can only be used with Artelli "Uranus" filters. (Filter not included)

**NL** Zie bijluster in de doos  
**FR** Regardez l'information à l'intérieur de la boîte  
**D** Siehe Gebrauchsanweisung im inneren der schachtel  
**E** See information supplied inside the box

**NL** 10 jaar na fabricatiedatum  
**FR** 10 années dès la date de fabrication  
**D** 10 Jahre ab herstellungsdatum  
**E** 10 years after fabrication date

**ASAFETY**  
P.O. Box 10000, 2000 Antwerpen, Belgium  
T +32 3 820 79 79, F +32 3 820 13 68  
www.asafety.be

ARTELLI is a registered trademark of All Safety



**VOLLMASKE  
FULL FACE MASK**



**artelli®**

**1** PCS **MARS**

CE MARS  
0426 | EN 136:98 (EN 148:1)

**NEDERLANDS**  
**Belangrijk:**  
Het "Mars" volgelaatmasker kan enkel gebruikt worden met Artelli "Uranus" filters.  
(Filters niet inbegrepen)

**FRANCAIS**  
**Important:**  
Utiliser le masque complet "Mars" uniquement avec les Artelli filters "Uranus"  
(Les filters ne sont pas inclus)

**DEUTSCH**  
**Wichtig:**  
Die Vollmaske "Mars" kann nur mit den Artelli "Uranus" Filtern benutzt werden.  
(Filter nicht enthalten)

**ENGLISH**  
**Important:**  
"Mars" Full Face mask can only be used with Artelli "Uranus" filters. (Filter not included)

**NL** Zie bijluster in de doos  
**FR** Regardez l'information à l'intérieur de la boîte  
**D** Siehe Gebrauchsanweisung im inneren der schachtel  
**E** See information supplied inside the box

**NL** 10 jaar na fabricatiedatum  
**FR** 10 années dès la date de fabrication  
**D** 10 Jahre ab herstellungsdatum  
**E** 10 years after fabrication date

**ASAFETY**  
P.O. Box 10000, 2000 Antwerpen, Belgium  
T +32 3 820 79 79, F +32 3 820 13 68  
www.asafety.be

ARTELLI is a registered trademark of All Safety




**artelli®**

**1** PCS **MARS**

Volgelaatmasker  
Masque complet  
Vollmaske  
Full Face mask

CE MARS  
0426 | EN 136:98 (EN 148:1)