



**Locked Web Browser™**

**User's Manual**

**DATALOGIC**



# Locked Web Browser™

USER'S MANUAL



# DATALOGIC

DATALOGIC S.p.A.  
Via Candini 2  
40012 - Lippo di Calderara di Reno  
Bologna - Italy

Locked Web Browser™

Ed.: 04/2005

#### ALL RIGHTS RESERVED

Datalogic reserves the right to make modifications or improvements without prior notification.

Datalogic shall not be liable for technical or editorial errors or omissions contained herein, nor for incidental or consequential damages resulting from the use of this material.

Product names mentioned herein are for identification purposes only and may be trademarks and or registered trademarks of their respective companies.

© Datalogic S.p.A. 2002 – 2005

04/04/05

# CONTENTS

---

<b>1</b>	<b>INTRODUCTION.....</b>	<b>1</b>
<b>2</b>	<b>INSTALLING LOCKED WEB BROWSER™ .....</b>	<b>2</b>
2.1	Starting Locked Web Browser™ .....	3
2.2	Configuring Locked Web Browser.....	3
2.3	Custom.....	4
2.3.1	Visible Controls .....	4
2.3.2	Scroll Bars.....	5
2.4	General .....	7
2.5	Connection.....	8
2.6	Security.....	9
2.7	Advanced.....	10
2.8	About.....	11
<b>3</b>	<b>CONFIGURATION WITH DL MOBILE DIRECTOR™ LOCAL CONFIGURATOR.....</b>	<b>12</b>



# 1 INTRODUCTION

---

The Datalogic Locked Web Browser™ is a Web browser based on Internet Explorer 6.0 (IE6) for Windows CE .NET, and allows Datalogic Portable Data Terminals to access Internet or Intranet resources and programs through TCP/IP networks.

The Locked Web Browser™ does not allow the user to exit the browser ("locked") and interact with the operating system. It is not possible to access the normal Navigation Bar, the Task Bar or Start Menu of Windows CE .NET, nor type a URL to access a website not related to the program.

This feature is very important in Windows-based devices to prevent end-users from changing terminal parameters.

It is possible to exit Locked Web Browser™ by entering a password to modify the system settings.

The main Locked Web Browser™ features are:

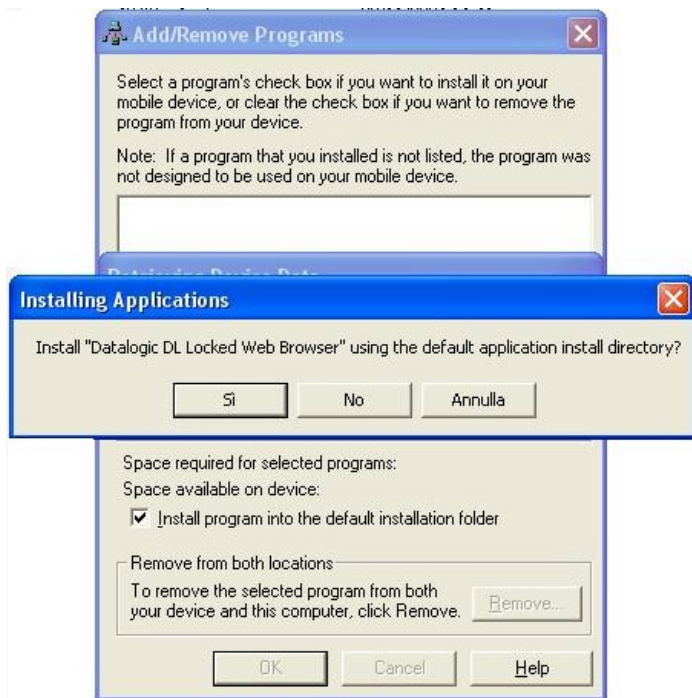
- Full Screen Mode
- Password Protected Exit
- Address Bar optionally available or toggled by the user
- Tool Bar optionally available or toggled by the user
- Scroll Bars optionally available with custom size or toggled by the user
- Status Bar optionally available or toggled by the user
- Barcode Configuration

## 2 INSTALLING LOCKED WEB BROWSER™

---

The Locked Web Browser™ can be installed or upgraded through a PC installation process. This method is available only for Windows CE .NET devices connected to a PC. The installation program has to be run on the PC, in order to download the necessary files onto the Windows CE .NET device. To install the Locked Web Browser™ through the PC installation method, follow the given procedure:

1. ensure that the Windows CE .NET device is connected to the PC and synchronized with it;
2. double-click the setup.exe icon on your PC and follow the instructions appearing in the dialog box below:



**Figure 1 – Installing Locked Web Browser**



## 2.1 STARTING LOCKED WEB BROWSER™

To start Locked Web Browser™ tap the Start Button on the screen and select the Locked Web Browser™ option from the Programs list **OR** double-tap the Locked Web Browser™ icon available in the Connections folder on the desktop.

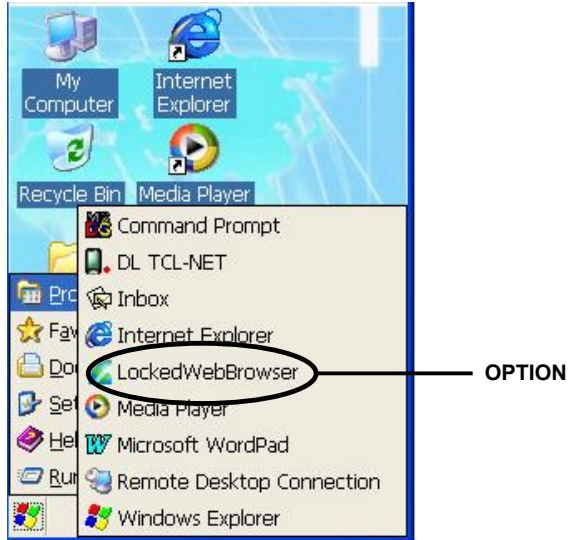


Figure 2 - Programs menu

## 2.2 CONFIGURING LOCKED WEB BROWSER

To enter the configuration menu press the [F1] key; a dialog box asking for a password will appear.



Figure 3 - Password Dialog Box

## 2.3 CUSTOM

This tab allows setting specific Locked Web Browser™ parameters:



Figure 4 - Custom Tab

### 2.3.1 Visible Controls

In this section it is possible to enable/disable the following visible controls:

- General Menu
- Address Bar
- Tool Bar
- Status Bar

#### Enable Toggle

If unchecked, the user cannot hide the enabled visible controls.

If checked, the user can toggle (hide/display) the enabled controls using the following key sequences:

**[Ctrl] + 1** = toggles the General Menu

**[Ctrl] + 3** = toggles the Address Bar

**[Ctrl] + 2** = toggles the Tool Bar

**[Ctrl] + 4** = toggles the Status Bar

## 2.3.2 Scroll Bars

### Enable Scroll Bars

This parameter allows enabling the horizontal and vertical scroll bars.

### Scroll Bar Width

This parameter allows defining the scroll bar width.

### En. Toggle

If unchecked, the user cannot hide the scroll bars.

If checked, the user can toggle (hide/display) the scroll bars using the following key sequence:

**[Ctrl] + 6** = toggles the Scroll Bars.

### Password

This parameter allows defining the password to enter the configuration menu.

### Barcode

This button automatically opens the Barcode Setup application present in the Windows Control Panel. This application allows configuring all scanner and code type parameters.

The available barcode parameters are divided into two groups: Reader Parameters and Scan Parameters. The Reader Parameters depend on the type of laser module installed on the terminal and allow barcode configuration (i.e. enable/disable Code 39, check digit control, etc.). The Scan Parameters are common to all laser modules and allow control of the scanning device (i.e. beeper control, LED control, laser timeout, etc.).

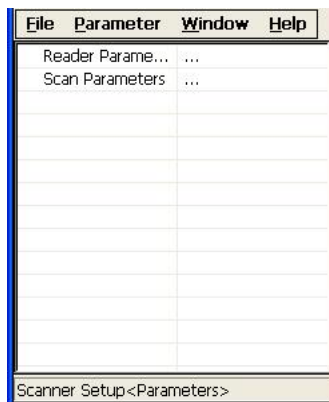


Figure 5 – Barcode Setup

File	Parameter	Window	Help
..		..	
	Text Formatting	...	
	Decoding Globals	...	
	Aiming	...	
	Code39	...	
	TwoOffFive	...	
	Plessey	...	
	Codabar	...	
	Code128	...	
	Code11	...	
	Code93	...	
	MSI	...	
	UpcEan	...	

Scanner Setup<Reader Parameters>

**Figure 6 – Reader Parameters**

File	Parameter	Window	Help
..		..	
	ScanTimeout	5000	
	BeepDuration	20	
	BeepFrequency	2000	
	LedDuration	0	
	LedPulses	0	
	ContinuousMode	Disabled	
	KeyboardEmula...	Disabled	
	SoftTrigger	Enabled	
	ScanAlwaysOn	Disabled	
	GoodReadSound	Beep.wav	

Scanner Setup<Scan Parameters>

**Figure 7 – Scan Parameters**

### Exit to CE .NET

This button allows returning to Windows CE .NET.

## 2.4 GENERAL

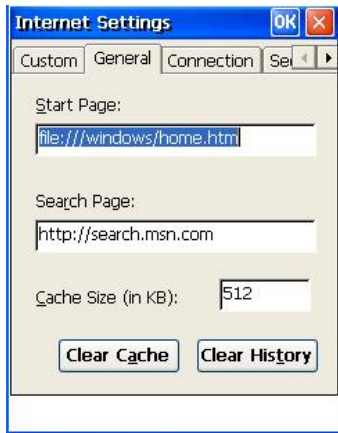


Figure 8 - General Tab

### Start Page

This parameter allows defining the page that is displayed every time you open Internet Explorer.

### Search Page

This parameter allows defining the Internet Explorer search page address.

### Cache Size (KB)

This parameter allows defining the size of the cache memory.

### Clear Cache

This button allows clearing the cache memory.

### Clear History

This button allows clearing all the visited web sites stored in the History folder.

## 2.5 CONNECTION

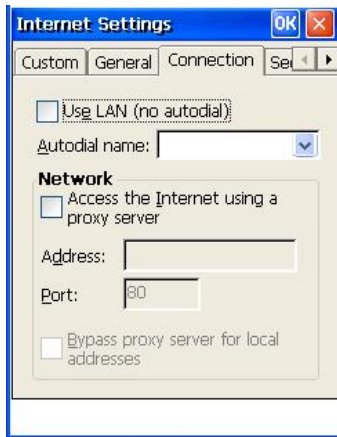


Figure 9 - Connection Tab

### Use LAN (no autodial)

This parameter allows selecting the connection type: LAN connection (if checked ) or autodial connection (if unchecked).

### Autodial Name

This parameter allows defining the autodial name.

### Access the Internet Using a Proxy Server

If checked, this parameter allows enabling the proxy server use to access the Internet.

### Address

This parameter allows defining the proxy server address.

### Port

This parameter allows defining the proxy server port number.

### Bypass Proxy Server for Local Addresses

This parameter allows bypassing the proxy server for local network addresses.

## 2.6 SECURITY

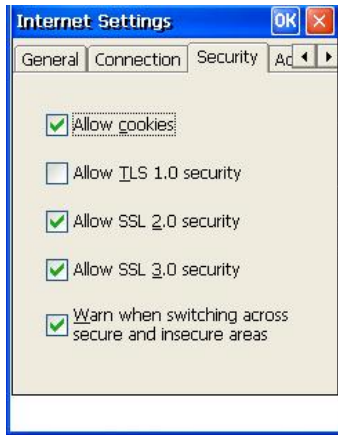


Figure 10 - Security Tab

### Allow Cookies

If checked, the creation of cookies stored on the hard disk is allowed.

### Allow TLS 1.0 Security

If checked, this parameter specifies whether to send and receive secured information through TLS 1.0 (Transport Layer Security), an open security standard similar to SSL3 (Secure Sockets Layer). Note that some Web sites might not support this protocol.

### Allow SSL 2.0 Security

If checked, this parameter specifies whether to send and receive secured information through SSL 2.0 (Secured Sockets Layer Level 2), the standard protocol for secure transmissions. All secure Web sites support this protocol.

### Allow SSL 3.0 Security

If checked, this parameter specifies whether to send and receive secured information through SSL3 (Secured Sockets Layer Level 3), a protocol that is intended to be more secure than SSL2. Some Web sites might not support this protocol.

### Warn when switching across secure and insecure areas

If checked, a warning will be displayed when switching to a site that is not secure.

## 2.7 ADVANCED

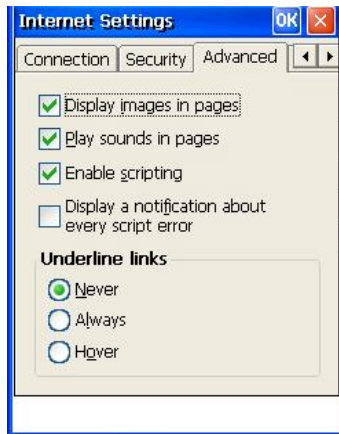


Figure 11 - Advanced Tab

### Display Images in Pages

If checked, graphical images will be included when pages are displayed. Sometimes pages containing several graphical images are displayed very slowly. To display pages more quickly, make sure this parameter is unchecked.

### Play Sounds in Pages

If checked, sounds will be play when pages are displayed. Sometimes pages that contain audio clips are displayed very slowly. To display pages more quickly, make sure this parameter is unchecked.

### Enable Scripting

If checked, this parameter allows enabling the scripting for certain frequently visited websites. The scripting should be enabled only for reasonably trusted websites.

### Display a Notification About Every Script Error

If checked, a notification will be displayed when a script error occurs.

### Underline Links

This parameter allows specifying when links on Web pages should be underlined.

- Never: the links will not be underlined
- Always: all links will be underlined
- Hover: a link will be underlined when the mouse pointer is over it



## 2.8 ABOUT



**Figure 12 - About Tab**

This tab gives information about the program version.

## 3 CONFIGURATION WITH DL MOBILE DIRECTOR™ LOCAL CONFIGURATOR

DL Mobile Director™ Local Configurator is a Windows-based utility tool allowing the configuration and monitoring of a radio frequency network terminal.

In particular, by selecting the Locked Web Browser™ item in the Terminal Configuration node, a further sub-branch will appear allowing the configuration of Locked Web Browser™ parameters (refer to DL Mobile Director™ Local Configurator Help on Line for further details).

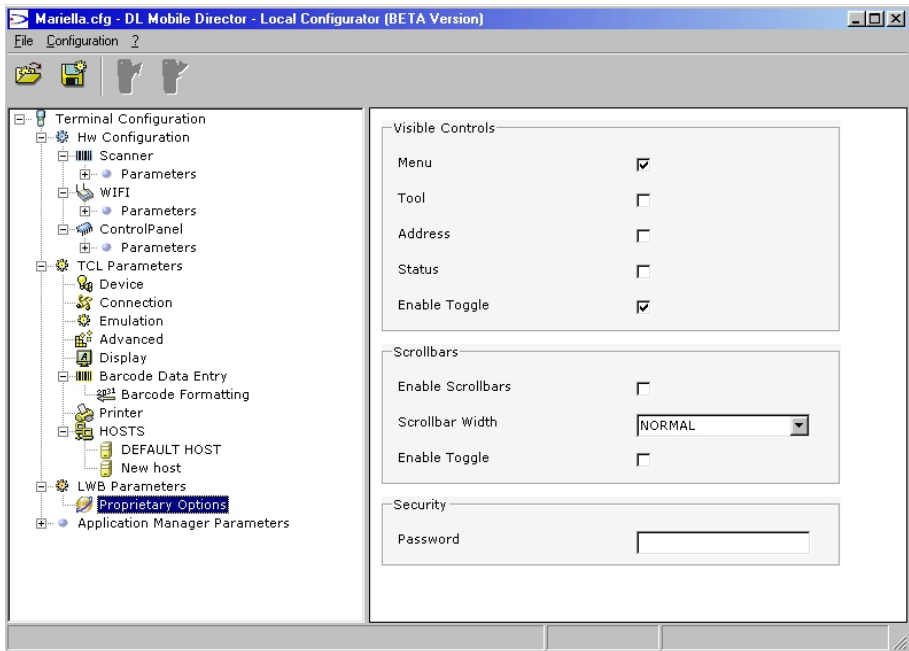


Figure 13 – Proprietary Options Parameters

The same utility is used for configuring the general Internet Explorer Parameters:

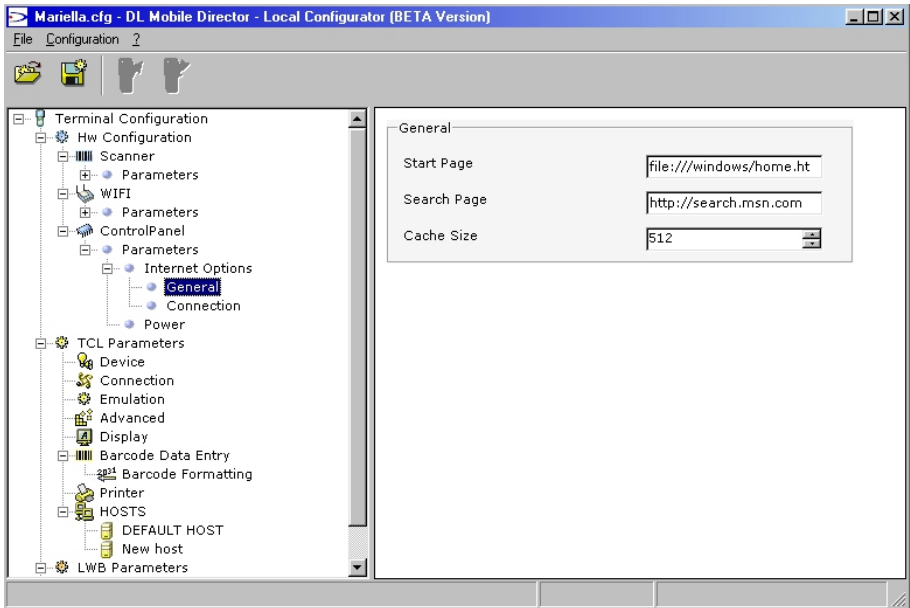


Figure 14 – Internet Options General Parameters