



OPERATOR'S MANUAL AND PARTS LIST PETROL LAWNMOWER - WERR19

Spares & Support: 01793 333212

www.webblawnmower.co.uk

Before use please read & understand this manual, paying particular attention to the safety instructions.

10/10/2012 v1

Contents

What you get with your Webb roller mower.....	4
Mower features.....	5
Tips on mower safety	6-7
Before you begin	8-9
Cutting height adjustment.....	10
Starting the engine	11
Basic maintenance made easy	12-14
Technical specifications	14
Fast trouble shooting.....	15
Warranty conditions.....	16
EC Declaration of Conformity.....	17
Note.....	18
Warranty registration card.....	19-20

Webb products are monitored and enhanced on an on-going basis to comply with changing technical standards and requirements. As a result, Webb reserves the right to alter design and specifications at any time without prior notice.

Thank you for choosing a Webb mower

We are sure that you will enjoy many years of trouble-free performance, plus you have the reassurance of an industry-leading 2-year domestic warranty as outlined on page 16.

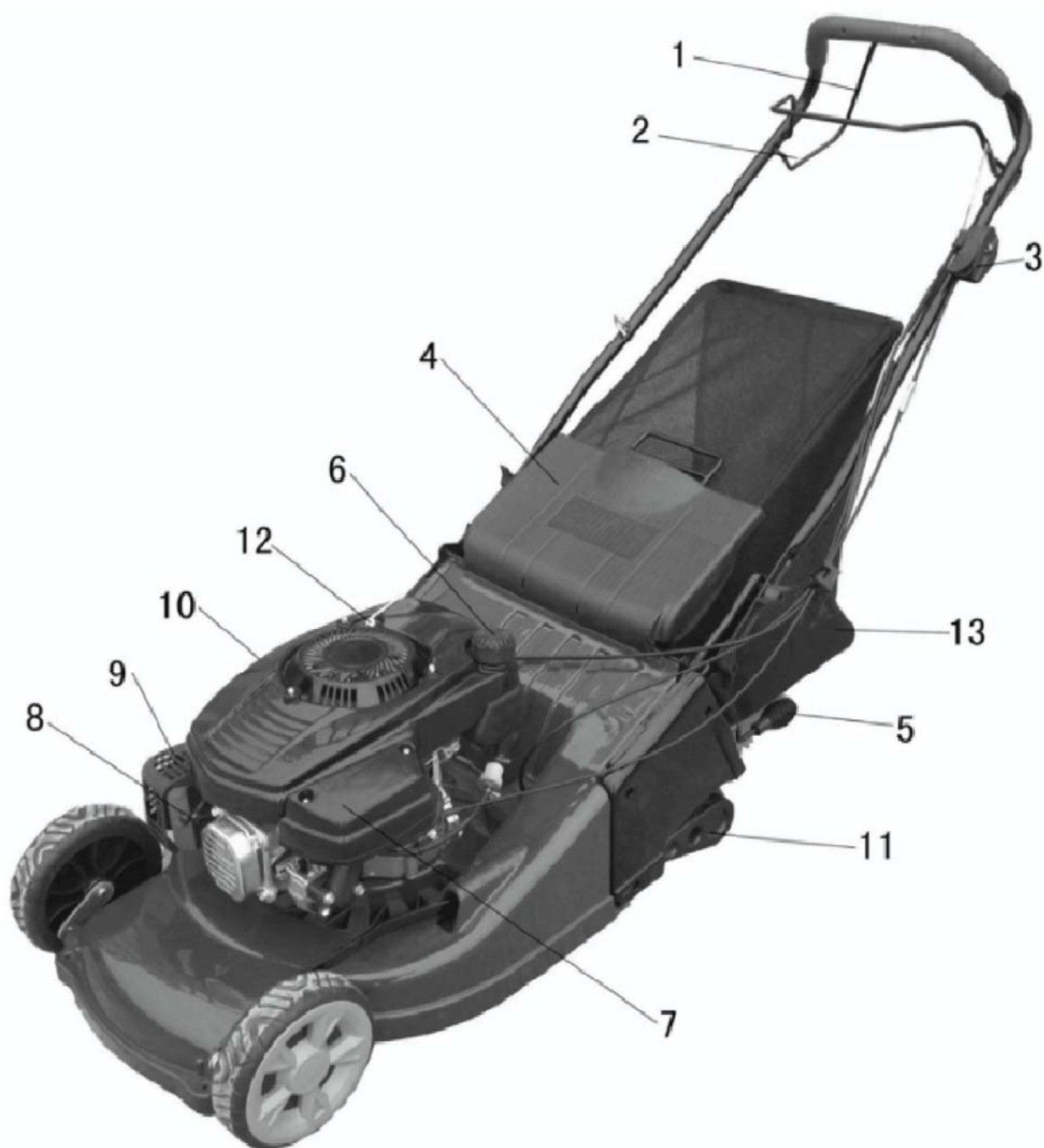
Inside this guide you will find out all you need to know to correctly operate your new Webb mower. To ensure that you use your new mower safely and get the best results possible, please read all of the safety and operating instructions carefully before using your lawnmower.

What you get with your Webb mower

Name	QTY	Name	QTY
Petrol engine lawnmower	1	Clamp bolt	1
Rear grass catcher	1	Air filter socket (10)	1
Spark plug socket (21)	1	Cable tie	2
Wrench (13~15)	1	Flashing nut with butterfly bolt assby	2
Oil pipe connection	1	Flashing nut with square bolt assby	2
Spanner lever	1		



Mower features



1	Drive lever	8	Spark plug
2	Operator presence control lever	9	Exhaust
3	Throttle control	10	Oil filter and dipstick
4	Rear deflector	11	Roller
5	Height adjustment lever	12	Starter rope
6	Fuel tank	13	Grass collection bag
7	Air filter		

Tips on mower safety

WARNING! The information contained within this safety section is extremely important. Personal injury to the user and to others may result if this section is not read and acted upon at all times.

1. Before starting your mower inspect it carefully to ensure that there are no loose parts and that it is in good working order.
2. Be sure of your footing. Always walk when operating the lawnmower, never run.
3. Clear the area to be mowed of any stones, sticks, wire and debris before beginning, and always ensure that you mow a safe distance away (over 14 metres) from adults, children and animals.
4. Keep hands, feet and clothing away from the mower's moving parts, and always wear appropriate footwear (do not wear sandals, open or soft shoes).
5. Never put your hands or feet underneath the chassis of the lawnmower while the engine is running.
6. Be aware that the machine's exhaust area and other parts of the lawnmower get very hot during use, and will remain hot after use.
7. Turn off the engine and disconnect the spark plug cap before cleaning, transporting, or making adjustments, and never leave the mower unattended.
8. Mow across the face of slopes, not up & down, and avoid mowing on very steep slopes. We recommend you avoid mowing when it is raining, or after nightfall.
9. Do not operate the machine by pulling it towards you as you risk pulling it on to your feet. Instead, always push and walk behind your lawnmower.
10. Do not fill the tank, or start the lawnmower indoors, or in a poorly ventilated area, as exhaust gases contain poisonous substances and petrol fumes are flammable and dangerous.
11. Use unleaded petrol that is not more than 3 months old. Do not fill the tank completely. Use a funnel. Clean up any over flow or splashes before starting the engine or storing.

12. To inspect the underside of your mower, only tilt the lawnmower backwards when standing behind it (this is the side where the exhaust is near the ground) otherwise oil may leak into inappropriate areas of the engine. Never tilt the lawnmower when the engine is running.
13. Turn off the engine before emptying the grass-catcher, and before clearing any grass caught in the rear flap where the catcher fits.
14. Do not alter the engine governing settings or over-rev the engine, as excessive speed is dangerous and can reduce engine life.
15. Never open the fuel filler cap, or fill the tank, if the engine is still hot after use. And please ensure that you securely tighten the petrol cap after filling.
16. Do not transport the mower in a vehicle if there is any petrol in the tank.
17. Store fuel and oil in a cool well-ventilated place, away from direct sunlight and not near gas cylinders or hot water heater systems.
18. Do not smoke when filling the fuel tank, using the machine, or when petrol is in the immediate area. And never use or store the mower near a naked flame.
19. Webb recommends that you wear a safety helmet, ear protectors, safety goggles and safety boots when using a lawnmower. These are available on 01793 333212.
20. All servicing and repair work under warranty must be carried out by an Authorised Webb Dealer, otherwise the 2-year warranty may be void. You can find your nearest dealer at www.webblawnmowers.co.uk.

Before you begin.

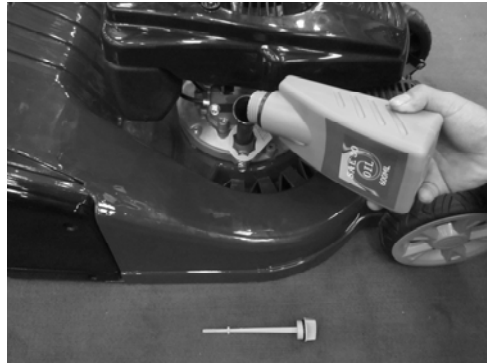
WARNING! The following procedures must be carried out before you start the engine of your lawnmower.

1. Fill oil sump with oil.

The mower is NOT supplied with oil in the engine, add 569ml SAE30 oil before starting the engine for the first time.

Firstly, remove the warning label from under the dipstick, then remove the dipstick and slowly pour 569ml SAE30 oil into the oil filler. Replace the dipstick and tighten.

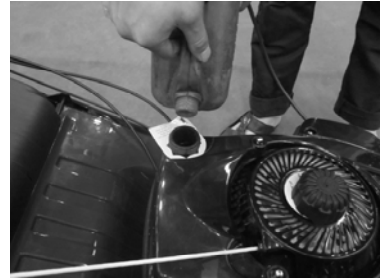
Before you use the mower each time, check the oil level and if necessary top up with SAE30 engine oil. To check the oil level, just unscrew the yellow dipstick, wipe clean and replace into the oil filler, remove it again to check the oil level. The oil level must be between the min and max marks on the dipstick.



2. Fill fuel tank with unleaded petrol.

Petrol is highly flammable so extreme caution must be taken when handling it. Always store petrol in approved containers and you must ensure that you use fresh petrol that is less than three months old. Do not mix oil with petrol.

To put petrol in the fuel tank, firstly remove the warning label from under the petrol cap. It's best to fill the tank using a clean funnel, but never fill it completely. Instead, leave at least 13mm from the bottom of the filler neck to allow for expansion. Ensure that you securely tighten the petrol cap after filling.



3. Attach the grass catcher.

The grass catcher attaches easily by lifting the mower's rear deflector and inserting the grass catcher.

Just lift the rear deflector with one hand and then gently slide the catcher into position (as shown in photo on right).



Cutting height adjustment.

WARNING! Turn mower off before adjusting cutting height lever.

Your lawnmower's height adjustment is positioned on the rear left side. There is a single 6-position lever that adjusts all four wheels at the same time.

The lower the level, the shorter the cut. For very thick or moist grass, you should select a higher setting than usual to avoid clogging and stalling the lawnmower under the extra cutting load.



Starting the engine.

WARNING! Keep hands, feet, and clothing well away from moving parts, the exhaust, and the engine cowling. Refer to 'Tips on mower safety' on pages 6 and 7 for more information.

1. Make sure that your mower is on a safe, flat area (a paved area or path is ideal – avoid thick wet grass and gravel surfaces) to make starting safe.
2. Move the throttle control lever located on the handle to the 'Cold Start' position.
3. Slide the 'Red' petrol tap lever to the left 'On' position.
4. Firmly hold the top handle with one hand, and then with your other hand pull the cord slowly until you feel resistance. Then pull vigorously.
5. When the engine has been running for at least 15 seconds (more time on cold days) adjust the throttle control lever to the 'Run' position.
6. To re-start a hot engine, move the throttle control lever to the 'Hot Start' position and then refer to 'Point 4' above.
7. To turn off your mower, slide the throttle control lever down to the 'Stop' position. After it has stopped, slide the 'Red' petrol tap lever to the right 'Off' position.



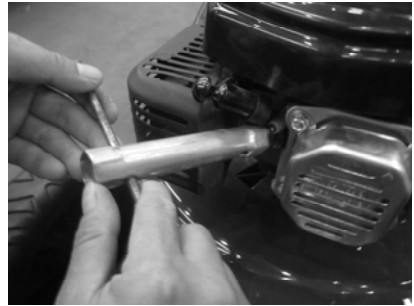
Basic maintenance made easy.

WARNING! If your mower is not serviced correctly, you could reduce your mower's ability to operate and void warranty.

1. Spark plug.

Firstly, wait until the engine has cooled before disconnecting the spark plug cover and then remove the spark plug with the box spanner supplied. If it is dirty, you can clean the plug with a wire brush.

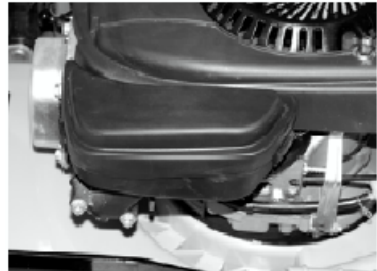
For best results we advise you to replace the spark plug after 100 hours of use. The replacement spark plug is NGK B4LM. When refitting the spark plug do not over-tighten. If adjusting yourself, note the spark plug gap must be set to 0.75mm.



2. Air filter.

Ensure the engine is cool, unscrew the top air filter nut, lift up the cover and remove the air filter element. Put the cover back on the housing immediately to prevent any objects falling into the air intake.

Either carefully brush off any excess dirt particles, or replace the air filter with a new one. To protect your warranty, only use a genuine B&S air filter. We recommend that you replace the air filter after every 12 months of regular usage. When the air filter has been cleaned or replaced, screw-in the cover, taking care not to over-tighten.



3. Cleaning ABS deck often.

As the ABS material can be marked by petrol, please clean the deck immediately whenever you find petrol on the deck or before storing.

6. Blades and cutting system.

Extreme care should be taken with blades. Ensure the mower is off and the spark plug lead disconnected from the spark plug, to prevent accidental ignition.

Remove the catcher, set the cutting height lever to the highest level, and then hold up the rear deflector in order to inspect your blade. Check every few months to make sure it is not damaged, loose, or overly worn. If loose, tighten, but do not over-tighten, the nuts and bolts.

If you are planning to change the blades yourself, use thick work gloves and take extreme care at all times. A full range of parts is available from your Authorised Webb Dealer.



Technical specifications.

Model	WERR19
Engine	Briggs & Stratton 625 Series (refer to separate engine manual)
Spark plug	B4LM, J17LM, W14LM-US, WPG3F
Engine oil	SAE30 - 569ml
Gross torque	6.25ft.-lbs
Cutting width	48 cm
Adjustable cutting heights	6
Grass collection capacity	70 litres
Noise level	96 dB (A)
Weight (including catcher)	36 kg
Chassis	ABS

Fast trouble shooting

Often, a depleted, loose, or dirty spark plug is responsible for a mower not being able to start, but there can be a number of other reasons. Refer below to the list of potential problems you may encounter, along with suggested remedies. For servicing and all warranty work, contact your local Authorised Webb Dealer.

Problem	Likely cause	Suggested remedy
	Throttle lever not set properly	Set to 'Cold Start' for cold or a little lower when warm
Engine does not start.	Out, or almost out, of fuel Spark plug failed Spark plug dirty Spark plug not connected Flooded engine Old petrol in the tank Water in the fuel tank	Fill tank with unleaded petrol Replace with a suitable new spark plug Clean or replace with a new spark plug Press firmly on the terminal cover Turn fuel 'off' then pull cord until it starts, then turn 'on' Drain stale fuel and replace with new unleaded Contact an authorised Webb dealer
Engine stops often	Blocked fuel supply Fuel cap is not venting Wrong type of fuel	Ensure the fuel line is not pinched or blocked You may need to slightly loosen the fuel cap Drain petrol tank and fill with new unleaded
Engine loses power	Dirty air cleaner filter Incorrect height adjustment Blocked fuel cap vent holes	Clean or replace with a new Briggs & Stratton air-filter Raise the mower's cutting height lever Ensure the 3 holes in the fuel tank cap are clear
Mower vibrates too much	Loose cutting blade Bent or broken blade Excessive grass/dirt build-up Blade worn/damaged	Check and tighten bolts and nuts Replace blade Clean and ensure underside clear of build up Replace blade
Poor cutting catching	Catcher not fitted correctly Incorrect cutting height set Blocked grass catcher vents	Reattach carefully and also check for damage Adjust the cutting height Clear and clean the vents Reinsert carefully and also check for damage

Warranty conditions

Please note that your warranty is affected by terms and conditions. Read on to fully understand what is covered by the warranty and what is not covered. Those items not covered by the warranty are the responsibility of the owner and any repairs will be at the owner's expense.

The warranty does not affect your statutory rights or remedies as outlined in applicable consumer legislation.

Webb provides an express warranty for this product for a period of 2 years from your original purchase date with the exception of commercial-use which is for a period of 90 days. The warranty is not transferable and is only applicable to the original purchaser that can provide original proof of purchase.

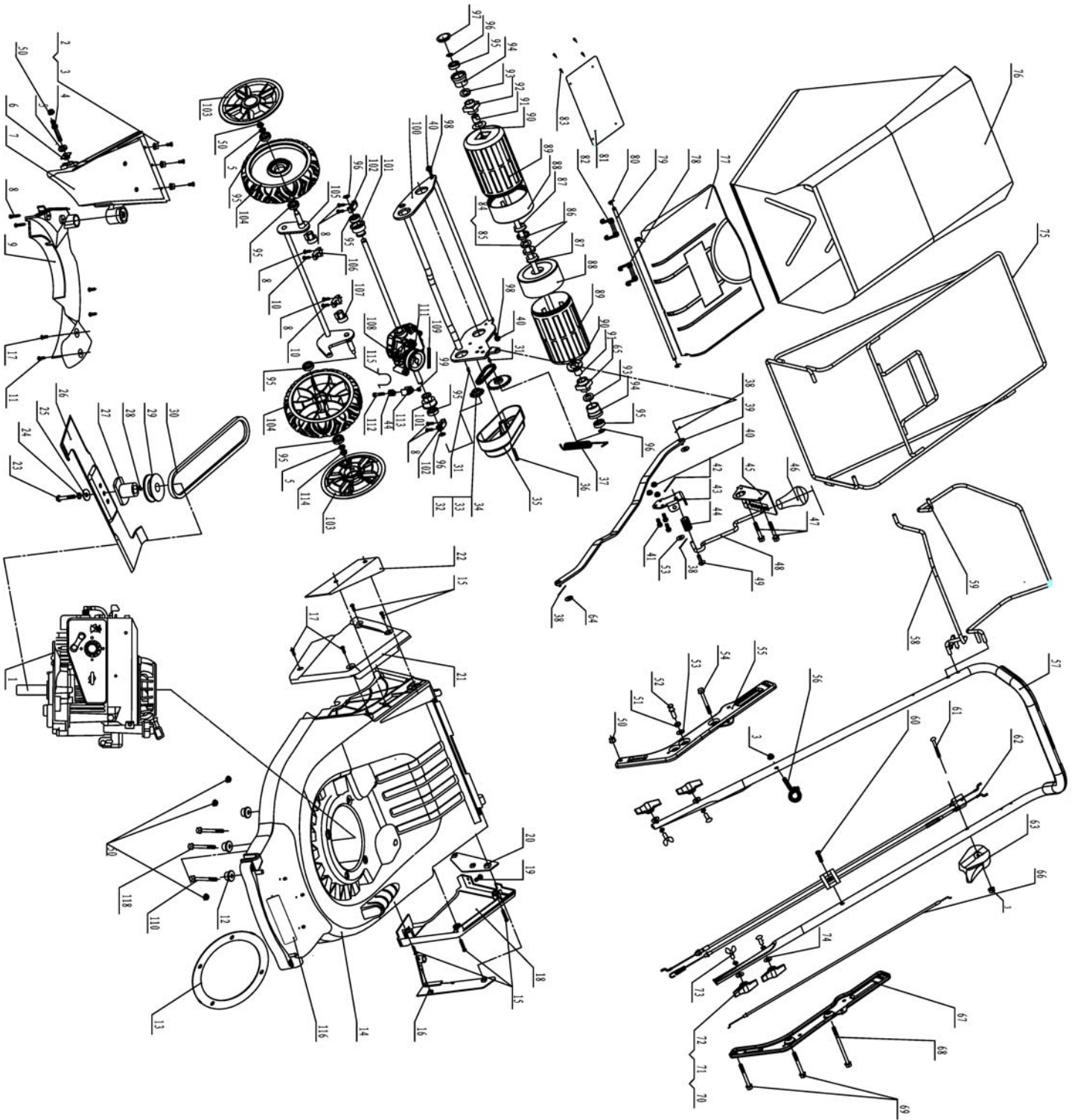
Defective parts will be replaced or repaired by an Authorised Webb Dealer without charge for labour or materials, subject to conditions. Repairs or adjustments required by failure to follow the manufacturer's instructions are chargeable to the owner.

This express warranty does not cover;

- Intentional or unintentional misuse, abuse or breakages
- Normal wear and tear
- Oiled air cleaner or starting difficulty caused by mower incorrectly tipped on its side
- Consumable items (including oil, blades and spark plugs)
- Defects or faults caused by an act or omission after leaving manufacture
- Incorrect, contaminated or poor quality fuel (older than 3 months) or oil
- Incorrect maintenance or storage of the product
- Water damage or environmental conditions
- Failure to observe safety requirements
- Any loss or damage arising from faulty parts or workmanship

The warranty may become void if any unauthorised person dismantles, repairs, or modifies the product.

Parts Diagram



WERR19 Spare Part List

No.	Model	English Name	Qty	No.	Model	English Name	Qty
1	WE107-01	BS625 Engine	1	60	WE107-60	Bolt M6×30	1
2	WE107-02	Screw M6×16	3	61	WE107-61	Screw M6×52	1
3	WE107-03	Nut M6	5	62	WE107-62	Drive and OPC cable	1
4	WE107-04	Double-end bolt	1	63	WE107-63	Throttle control unit	1
5	WE107-05	Washer	3	64	WE107-64	Nut M6	2
6	WE107-06	Nut	1	65	WE107-65	Bearing housing, left	1
7	WE107-07	Grass channel	1	66	WE107-66	Throttle cable	1
8	WE107-08	Self-tapping bolt 5×30F	8	67	WE107-67	Lower handle fixer, left	1
9	WE107-09	Belt cover	1	68	WE107-68	Bolt M8×75	1
10	WE107-10	Self-tapping bolt ST 5×25	2	69	WE107-69	Bolt M8×50	2
11	WE107-11	Self-tapping bolt ST 5×16	1	70	WE107-70	Flashing Nut	4
12	WE107-12	Bush	3	71	WE107-71	Bolt M8×25	2
13	WE107-13	Washer	1	72	WE107-72	Washer 10	2
14	WE107-14	Deck	1	73	WE107-73	Wing bolt M8×35	2
15	WE107-15	Self-tapping bolt 5×35F	5	74	WE107-74	Washer	4
16	WE107-16	Handle support plate Left	1	75	WE107-75	Grass bag frame	1
17	WE107-17	Self-tapping bolt 5×20F	5	76	WE107-76	Grass bag	1
18	WE107-18	Cover, lower left handle	1	77	WE107-77	Rear flap	1
19	WE107-19	Bolt M5×12	1	78	WE107-78	Spring, rear flap	1
20	WE107-20	Height adj fixed plate	1	79	WE107-79	Rear flap axle	1
21	WE107-21	Cover, lower right handle	1	80	WE107-80	Clip ring 6	2
22	WE107-22	Handle support plate Right	1	81	WE107-81	Metal plate	1
23	WE107-23	Lock nut 3/8"-24UNF-2B	1	82	WE107-82	Spring, rear flap	1
24	WE107-24	Washer 10	1	83	WE107-83	Rivet ST 3.8×9	4
25	WE107-25	Washer φ10.5×φ30×3	1	84	WE107-84	Roller axle	1
26	WE107-26	Cutter blade	1	85	WE107-85	Washer 12	1
27	WE107-27	Blade flange	1	86	WE107-86	Dust shield	2
28	WE107-28	Key 4.8×6.5×16	1	87	WE107-87	Bearing 12×28.6×32	2
29	WE107-29	Front belt pulley	1	88	WE107-88	Roller cover	2
30	WE107-30	Belt A787	1	89	WE107-89	Roller	2
31	WE107-31	Key 3×5×13	2	90	WE107-90	Washer	2
32	WE107-32	Sprocket 11T	1	91	WE107-91	Bearing HF-1216	2
33	WE107-33	Sprocket 20T	1	92	WE107-92	Bearing housing, right	1
34	WE107-34	Chain 06B-1×37	1	93	WE107-93	Obturator ring 12.3×3.4×3.4	2
35	WE107-35	Drive Cover	1	94	WE107-94	Roller bearing housing	2
36	WE107-36	Bolt M6×40	1	95	WE107-95	Bearing 6001-2RS	8
37	WE107-37	Spring, connecting bar	1	96	WE107-96	Clip ring 12	4
38	WE107-38	Pin 2×20	3	97	WE107-97	Hub cap	1
39	WE107-39	Connecting bar	1	98	WE107-98	Washer 6	2
40	WE107-40	Nut M6	5	99	WE107-99	Nut M6	1
41	WE107-41	Bolt M6×16	3	100	WE107-100	Rear axle	1
42	WE107-42	Pin 3.2×20	1	101	WE107-101	Gear box bearing housing	2
43	WE107-43	Height adjustment support	1	102	WE107-102	Gland bush, rear axle	2
44	WE107-44	Spring,tensioner	2	103	WE107-103	Front wheel cover	2
45	WE107-45	Height adjustment board	1	104	WE107-104	Front wheel	2
46	WE107-46	Height adj handle knob	1	105	WE107-105	Front axle	1
47	WE107-47	Bolt M6×30	2	106	WE107-106	Gland bush, front axle	2
48	WE107-48	Height adjustment lever	1	107	WE107-107	Bush	2
49	WE107-49	Pin pivot B 8×24	1	108	WE107-108	Gear box	1
50	WE107-50	Nut M8	5	109	WE107-109	Pin 5×40	1
51	WE107-51	Washer 8	1	110	WE107-110	Bolt M8×60	2
52	WE107-52	Bolt	1	111	WE107-111	Rear belt pulley	1
53	WE107-53	Flat washer 8	2	112	WE107-112	Rivet ST 5.5×19	1
54	WE107-54	Bolt M8×35	1	113	WE107-113	Tensioner bracket	1
55	WE107-55	Lower handle fixer,right	1	114	WE107-114	Nut M8	1
56	WE107-56	Recoil Hook	1	115	WE107-115	Clip	1
57	WE107-57	Padded Handle	1	116	WE107-116	Webb noseplate	1
58	WE107-58	OPC bar	1	117	WE107-117	Combined washer and bolt M8×88	1
59	WE107-59	Drive bar	1				



EC Declaration of Conformity

We, Importer
Handy Distribution
SN3 4NS

Declare that the product
Model: WERR19

Complies with the following directives:
2006/42/EC- Machinery Directive
2004/108/EC- Electromagnetic Compatibility Directive
2000/14/EC amended by **2005/88/EC**- Noise Emission in the Environment by Equipment for Use Outdoors Directive.

The conformity assessment procedure followed was in accordance with
Annex VI of the Directive 2000/14/EC and the Directive 2005/88/EC

Name of the Notified Body:
TÜV SÜD Product Service GmbH-
Address: **Ridlerstrasse 65-80339 München (Germany)**
TÜV SÜD Product Service GmbH-
Address: **Westendstrasse 65-80686 München (Germany)**

-Measured Sound Pressure Level: 94dB(A)
-Guaranteed Sound Power Level: 96dB(A)

Authorised signatory and technical file holder

Date: 24/10/2012

Signature: 

Name / title: Mr. Simon Belcher / Managing Director
Hobley Drive, Stratton St Margaret, Swindon, Wiltshire, SN3 4NS.



Webb Lawnmowers,
Hobley Drive,
Swindon,
SN3 4NS, United Kingdom.
Telephone: +44 (0) 1793 333220
Fax: +44 (0) 1793 834461
E-mail: sales@webblawnmowers.co.uk
www.webblawnmowers.co.uk

Warranty Registration Form

Please go to www.webblawnmowers.co.uk select registration and complete the registration for your machine.
(Alternatively please fill in this form and return to the address above.)

Owner's Name:

Address:

Postcode:..... Telephone No.:

Email Address:

Agent/ Dealer:

Product: Model:

Serial No: Engine No:.....

Date of Purchase:

Date of Delivery: (Warranty Commences From Date of Delivery)

Webb Lawmmowers
Hobley Drive
Stratton St Margaret
Swindon
Wiltshire
SN3 4NS

