

WT-1021

GSM+GPS Tracker

User Manual & Setting Instructions



1. INTRODUCTION

WT-1021 is a personal remote position device with build-in GPS and GSM/GPRS modules. It is a small size, high accuracy remote location tracking device. Based on GPS satellite, it provides accurate position information under dynamic conditions. Personal remote position device transmit the longitude and latitude coordinate to authorized cell phone.

You can use these features for protecting and searching children and old persons. Further, you can use it as a security purpose and other purpose which needs remote positioning such as asset protection and animal tracking

2. FEATURES

- Build-in GPS personal locator
- GSM/SMS communication or GPRS TCP/UDP connection
- Works worldwide!
 - ➔ Support 3-frequency GSM900/1800/1900Mhz
 - ➔ Support 4-frequency GSM 850/900/1800/1900 Mhz (Optional)
- High sensitivity, new technology and latest GPS SiRF-Star III chipset!
 - ➔ Excellent for fixing the position even at a weak signal status.
 - ➔ Work well even in areas with limited sky view like urban canyons.
- Compact size, and smaller than one name card. Easy to hide
- Very Low power consumption
- Fast Signal Acquisition
- Support single location and continuous tracking
- Support location triggered by tracker
- Support location triggered by authorized cell phone
- Support alarm and remote monitor
- Support quick dialing buttons for 2 preset phone numbers
- Support check location by SMS and GPRS
- Monitors can track the person without interfering him,
 - ➔ LIVE! Real-Time tracking!
- Locate the locator holder by the mobile phone via SMS (short messaging system)
- SOS button send out exact location for immediate rescue/action.
- Geo-fencing to restrict movement to a defined radius.
- No monthly service charges to be paid to the call center

3. SPECIFICATION

HARDWARE	
GSM Modules	embedded GSM 850/900/1800 embedded GSM 850/900/1800/1900Mhz (optional) and GPRS TCP/UDP
GPS Chipset	latest GPS SiRF-Star III chipset
GPS Sensitivity	-158Db
GPS Frequency	L1, 1575.42 MHz
C/A Code	1.023 MHz chip rate
Channels	20 channel all-in-view tracking
Position Accuracy	10 meters, 2D RMS
Velocity Accuracy	0.1 m/s
Time Accuracy	1 us synchronized to GPS time
Default datum	WGS-84
Reacquisition	0.1 sec., average
Hot start	1 sec., average
Warm start	38 sec., average
Cold start	42 sec., average
Altitude Limit	18,000 meters (60,000 feet) max.
Velocity Limit	515 meters/second (1000 knots) max.
Acceleration Limit	Less than 4g
Jerk Limit	20 m/sec

Other	
Operating temperature	-25° to 65° C
Humidity	5% to 95% Non-condensing
Dimension	76 mm × 46 mm × 25 mm
Voltage	Rechargeable and replaceable 1300 mAh battery (3.7V), 5V for charging input.
Charging connector	DC 5V (USB port)
Standby time	Over 60 hours
LED	3 LEDs showing Power, GPS and GSM status, And other operation status.
KEY	3 Keys for SOS Emergency key, quick dial key A, quick dial key B

4. HARDWARE DESCRIPTION

Red LED - indicate power state:



State	Meaning
Constant Darkling	The power is too low to work or Charging was completed.
Light 0.1s dark 0.1s	The power is not enough
Constant Lighting	Charging
Light 1s dark 2s	Working

Blue LED - indicate the GPS signal state:



State	Meaning
Constant Lighting	One key be pressed
Light 0.1s dark 0.1s	Initial
Light 0.1s dark 2.9s	GPS receiver work well
Light 1s dark 2s	No GPS signal

Green LED -- indicate the GSM signal state:



State	Meaning
Constant Lighting	One call is coming
Light 0.1s dark 0.1s	Initial
Light 0.1s dark 2.9s	GPS receiver work well
Light 1s dark 2s	No GSM signal



Button Function description:

Button	Meaning
Power Button	Turn On/ Turn Off
SOS button	You can assign a phone numbers to the SOS button. When this button is press, WT-1021 will send it's location information to the phone number by SMS, at the same time, WT-1021 will dial to the preset phone number
Call B button	You can assign a phone numbers to the Quick Call B button. When this button is press, WT-1021 will dial to the preset phone number
Call C button	You can assign another phone numbers to the Quick Call C button. When this button is press, WT-1021 will dial to the preset phone number

5. GET STARTED

5.1 Accessories

1. USB Charged Cable



2. Wall Charger and Car Charger



3. Earphone with mini microphone



5.2 Charge Battery

Before you can use the WT-1021, you must FULLY charge the battery by USB cable at least 2 hours under the power off condition.

Charger state indicates:

Red light is ON. It indicates that it is in charging

Red light is OFF. It indicates that charge completed



5.3 Buy SIM Card

Buy SIM Card from local service provider

(Note: Please make sure that your SIM Card support SMS function and have enough deposit)

5.4 Install SIM Card

Insert SIM Card to WT-1021 as following picture shows



6. Operation

6.1 Turn ON/ Turn OFF

Turn On:

When the device is off, press the power button to on side and wait for about 20 seconds. It will enter standby mode. **It is suggested that you be an outer place where it can receive the better GPS signal** when you turn on the device.

Turn OFF:

When the device is on, press the button to off side and wait for 3 seconds. When the LEDs go out, it indicates that the device is turn off for sure



Tips: How to get better GPS signal;

1. Working outdoor, WT-1021 can get better GPS signal
2. The front side WT-1021 should be placed towards sky

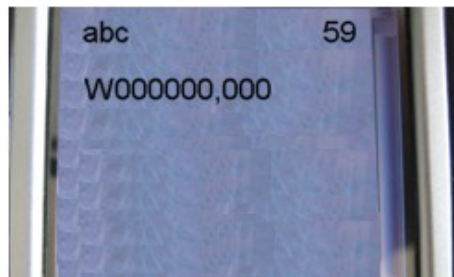
6.2 Apply For One Position Service

No matter where you are, when you want to know the position of your vehicle, send a SMS or make a telephone call to WT-1021, it will repost its location back to you by SMS.

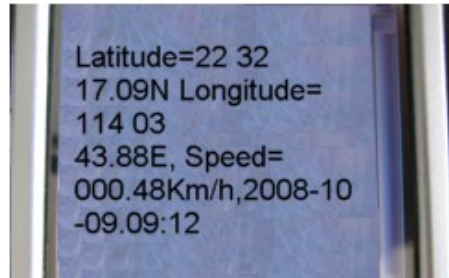
Edit a message as following format, then send it to WT-1021:

Format: **W+Password+,+000**
(Initial password is: 000000)

For Example: **W000000,000**



The WT-1021 send back one SMS, which including the position information



Position Data Means:

Longitude: 114 degree – 03 cent – 43.88 second

Latitude: 22 degree – 32 cent – 17.09 second

(Tips: Apply for one position service by **another easier way**;

- a) Dial up the WT-1021 number by your mobile phone
- b) After listening the ring of WT-1021 for 10 ~ 20 second, ring off the phone
- c) Then, after 20 second, your mobile phone will receive the position SMS)

6.3 Set A Time Interval For Tracking Report Function

Tracking report function can be turned on or off according to the requirements of the user. **Tracking function will continually report vehicle position until get stop command.** In this tracking mode, WT-1021 will send one position message at a preset time interval.

(It is say that WT-1021 will send one position message every time interval)

Step1: Edit a message as following format, and then send it to WT-1021:

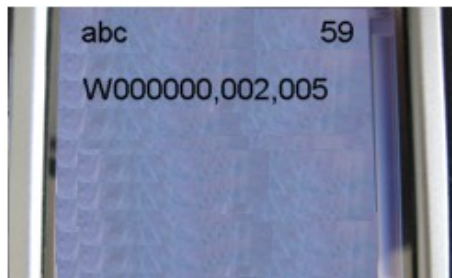
----- **W+Password+,+002,+XXX**

(Note: XXX unit: preset minutes interval

-- if XXX=000 it is STOP tracking)

For example: **W000000,002,005**

(It means is WT-1021 will send Position Data each 5 minutes)



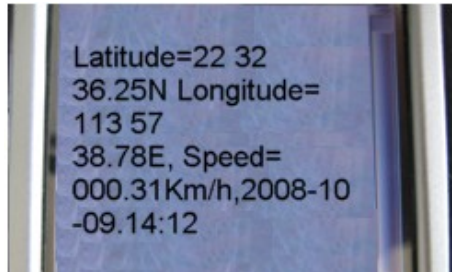
Step2: WT-1021 will send back one SMS – Set Time (preset time interval) OK

In this example, the SMS is **Set Time (005 Min) OK**

This SMS means that WT-1021 is in tracking mode now and preset time interval is 5 minutes

Step3: WT-1021 will send back position SMS at present time interval.

In this example, the SMS will send back position data at every 5 minutes. The target phone will receive the Position Data each 005 minutes.



Position Data Means:

Longitude = 113 degree – 57 cent – 38.78 second

Latitude = 22 degree – 32 cent – 36.25 second

(Note: If SMS shows:

Longitude = 000 degree – 00 cent – 00 second

Latitude = 00 degree – 00 cent – 00 second

It means that GPS signal is too weak to work well)

6.4 Stop Continuous Tracking Report Function

This function is used to turn off tracking report function

Edit a message as following format, then send it to WT-1021:

Format: **W+Password+,+002+,+000**

For example: **W000000,002,000**

The WT-1021 will send back one SMS -- Stop Timer OK. This message means tracking report function is turned off

6.5 Set Preset Phone Number for SOS key

This function is used to set what telephone number will be dialed when press SOS key.

Step1: Edit a message as following format, then send it to WT-1021

W+password+,+003+,+3+,+1+,+ area number +telephone number

For Example

"W000000,003,3,1,008613628888444"

Step2: About ten seconds later, the WT-1021 will send back one SMS----Set Tel OK/003,3,1,008613628888444.This message means the preset phone number for SOS key is OK.

Step3: Press the SOS button, the WT-1021 will send one Alarm SMS to "0086 13628888444", and then dial "0086 13628888444".

Note:

- a) After SOS button be pressed, you can call and talk with another people by ear microphone
- b) Press the Call Key B, you can hang up the call or cancel the SOS call
- c) After press the SOS key, WT-1021 do not go into normal state until you press Call key
B to cancel the SOS call
- d) About area number

In different countries, the area number may different. Please contact with your telecommunication provider to get the area number.

6.6 Make SOS help

This function is especially useful when in emergency. When SOS key is pressed, WT-1021 will in SOS state and send SOS alarm SMS and position data SMS to preset phone number. At the same time WT-1021 will dial preset telephone number. When the telephone pick up, 2 ways communication starts.

When the SOS button is pressed for 4 seconds, a SOS help is made.



6.7 Cancel a SOS Call

When in SOS state, press Call B key to hang up the phone, exit SOS state and return normal state



6.8 Dial The Preset Phone Number by Call B or Call C

Press the Call B button/ Call C button for 4 seconds, WT-1021 will call the according preset phone number, then you can talk with another people.



If you completed the call, you can hang u the calling by pressing the Call B button

6.9 Receiving Incoming Call

When incoming call, the green light will light, you can press SOS key to receive the calling, then talk with another people by ear microphone

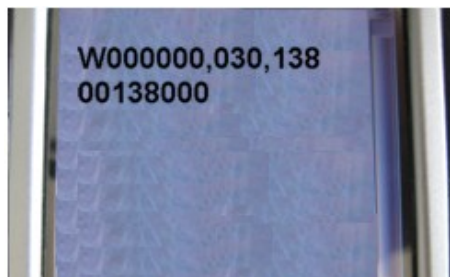


If you completed the call, you can hang u the calling by pressing the Call B button

6.10 Set Monitoring Call

When you want to monitor the voice around WT-1021 ,you need set a monitoring number,you can use the mobile phone with this monitoring number to call WT-1021,WT-1021 can answer by itself ,so you can hear what you want .

Set one monitoring call: W000000,030,13800138000

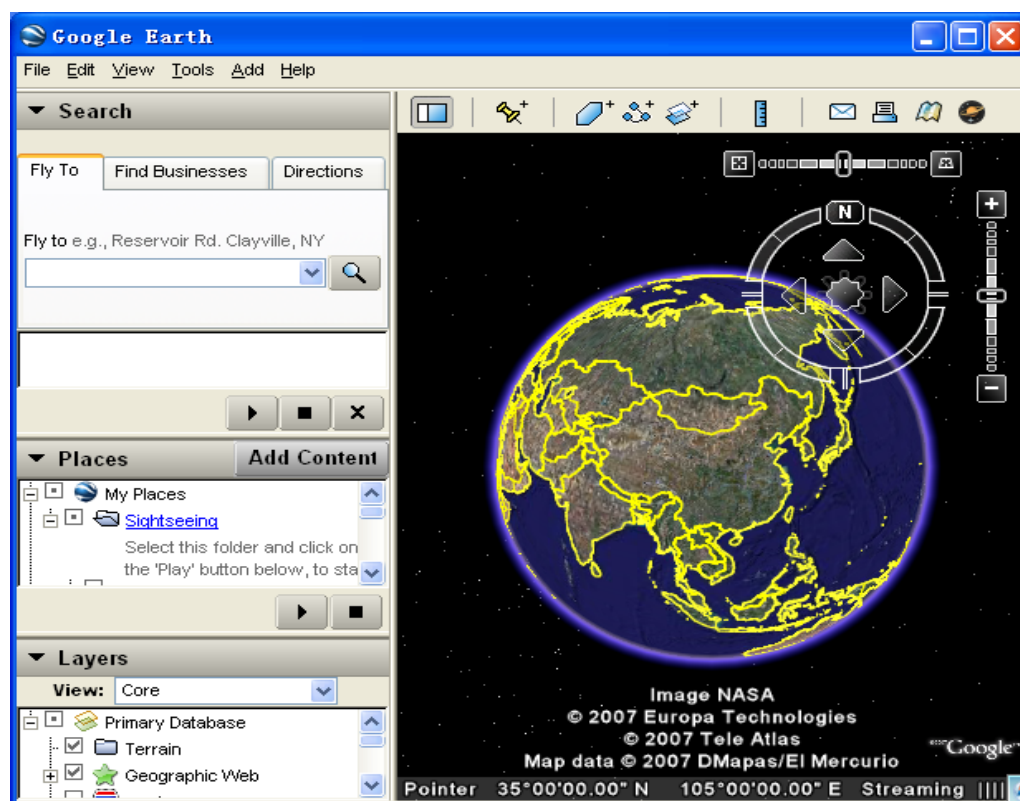


So this number 13800138000 can monitor the tracker.

7 DISPLAYING LOCATION ON MAP

- 7.1 Download Google Earth software from <http://earth.google.com>
- 7.2 Start the Google Earth Software (For more information about Google Earth Software, please refer to <http://earth.google.com/>) As following picture shows:

(Note: Pay attention to change the Position Data Format)



Or you can start the Internet Explorer and type "http://maps.google.com" to connect to Google Map website for displaying the location map.

- 7.3 You can get the latitude & longitude data by sending "W+Password+, +000" SMS command Code to the GPS Tracker WT-1021. Input the latitude and longitude that you receive from SMS and click on search button. The Google earth will display the location map for you.

For example:

Step1: We you see the Position Data from SMS:

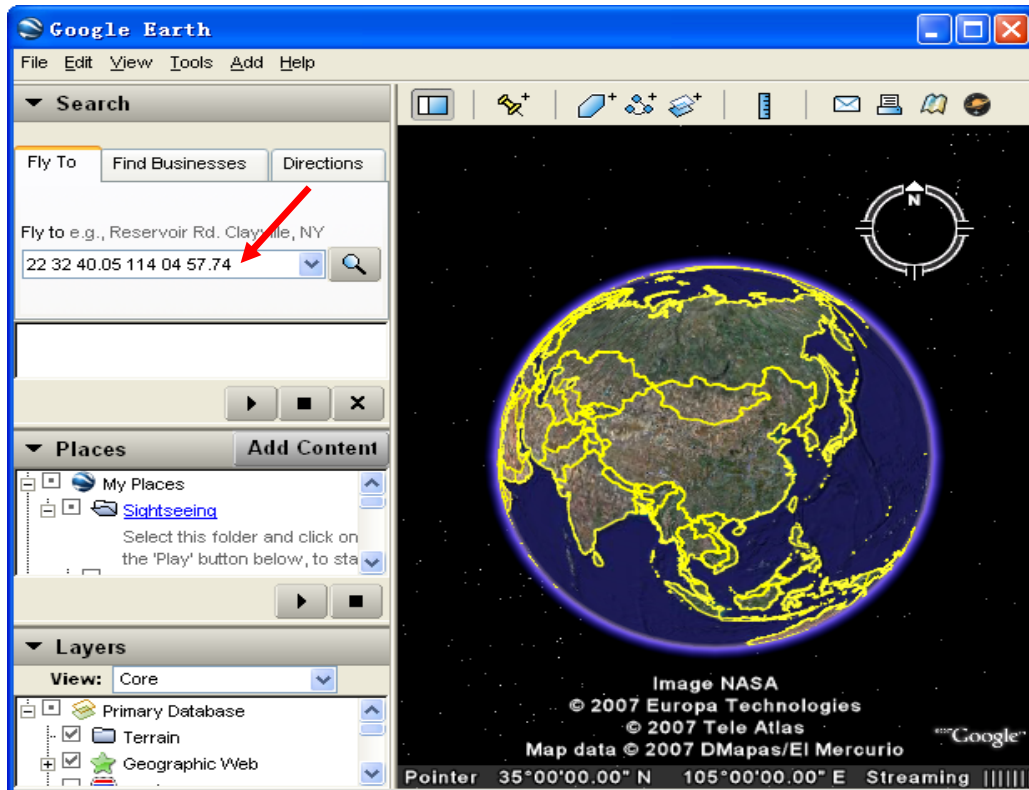
Last: Latitude = 22 32 40.05N

Longitude = 114 04 57.74E

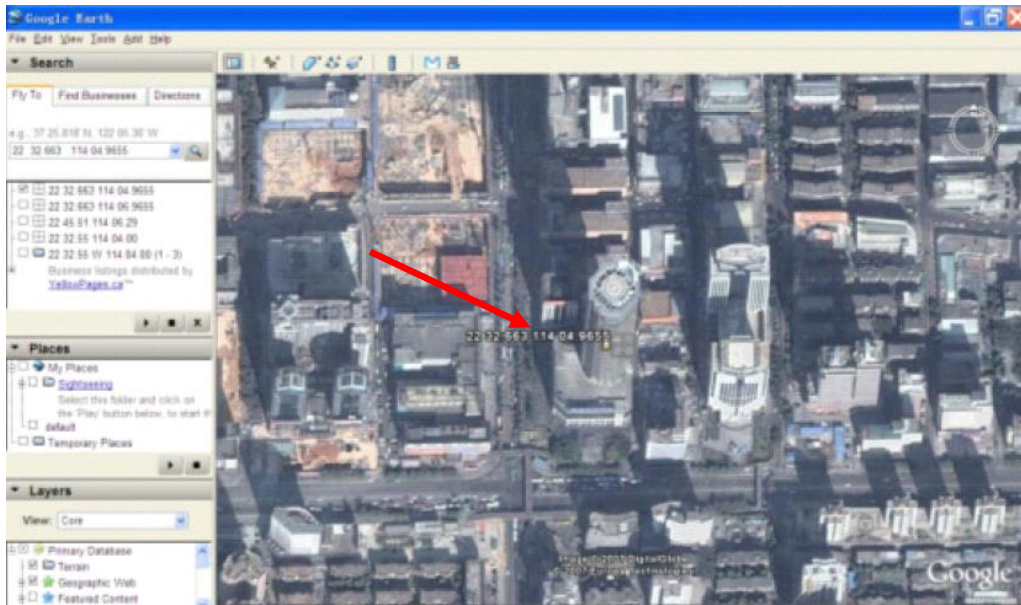
Step2: Now you can Input the latitude and longitude as following, and click on the searching button.

(Note: Pay attention to change the Position Data Format)

Format: **22 32 40.05 114 04 57.74**



Step3: Now you can find the exact position of the tracker.



- 7.4 Or you can use local map software on **PDA** or **Car Navigation Device**, input the Position Data.

(Note: Pay attention to change the Position Data Format)



8 More Professional SMS Instruction

***** is user password, and initial password is 000000

	SMS Instruction	Format	Note
1	Request one position	W*****,000	
2	Modify User Password	W*****,001, #####	***** is old password ##### is new password
3	Set the time	W*****,002,XXX	XXX (3 digital)

	internal of continuous tracking when in SMS working mode		=000,stop =[1,999] time interval (unit: mins)
4	Set a preset phone number for SOS button/ Call B button/ Call C button; When this button is pressed, WT-1021 will dial the preset number	W*****,003, F,P,Tel Number	F = 0, close this function = 1, only send alarm SMS to the preset number = 2, only Call the preset number = 3, Send alarm SMS then Call the preset number P = 1, Set the preset number for SOS key = 2, Set the preset number for Call B = 3, Set the preset number for Call C TelNumber : Preset Tel Number (TelNumber must <16 digits)
5	Set low power alarm When the WT-1021 voltage is lower than the preset value, WT-1021 will send one lower power alarm SMS to the SOS preset number	W*****,004,X	X (Voltage preset value) = 0, close = 1, <3.3V send SMS alarm = 2, <3.4V send SMS alarm = 3, <3.5V send SMS alarm (default) = 4, <3.6V send SMS alarm = 5, <3.7V send SMS alarm
6	Set over speed alarm When the WT-1021 speed higher than the preset value, WT-1021 will send	W*****,005, XX	XX (the speed preset value) = 00, close = [01< XX <20] (unit: 10Km)

	one over speed alarm SMS to the SOS preset number		
7	Set Geo-Fence alarm When the WT-1021 move out preset scope, WT-1021 will send one Geo-fence SMS to the SOS preset number	W*****,006,XX	XX (preset distance to original place) = 00, close = 01, 30m = 02, 50m = 03, 100m = 04, 200m = 05, 300m = 06, 500m = 07, 1000m = 08, 2000m
8	Extend setting (note: Please use this instruction carefully)	W*****,008,ABCDEF G###	A = 0, Close position report function which get position SMS by Calling WT-1021 A = 1, Open position report function which get position SMS by Calling WT-1021 B = 0, position SMS format be analyzed in order to read easily For example: <i>Longitude = 114 degree - 04 cent - 57.74 second</i> <i>Latitude = 22 degree - 32 cent - 40.05 second</i> B = 1, position SMS format in NMEA 0183 Format For example: <i>\$GPRMC,072414000,V,3114.3763,N,12131.3255,E,0.00,0.00,050805,*00</i> C = 0, WT-1021 do NOT hung up

			<p>when incoming call</p> <p>C = 1, WT-1021 hung up after 4~5 rings when call incoming</p> <p>C = 0, WT-1021 do NOT send one notice SMS to SOS preset number when the WT-1021 power on</p> <p>D = 1, WT-1021 do send one notice SMS to SOS preset number when the WT-1021 power on</p> <p>E = 0, WT-1021 do NOT shut down automatically when the power voltage lower than 3V</p> <p>E = 1, WT-1021 will shut down automatically when the power voltage lower than 3V</p> <p>F = 0, WT-1021 do NOT send the notice SMS to the SOS preset number when the GPS signal is weak</p> <p>F = 1, WT-1021 send the notice SMS to the SOS preset number when the GPS signal is weak</p> <p>G = 0, Open 3 LED when WT-1021 works</p> <p>G = 1, Close 3 LED when WT-1021 works</p> <p>###, end char</p> <p>(default value should be: ABCDEFG = 1011110)</p>
9	Set the tracker ID for WT-1021 for GPRS	W*****,010,ID	<p>ID: the Tracker ID of the tracker, it may set to telephone number according the SIM card of WT-1021</p> <p>(Tracker ID must be <14 digits)</p>

10	Set APN	W*****,011,APN, APN User Name, APN Password	APN: APN string. No more than 39 strings
11	Set IP Address & Port Number	W*****,012,IP,PORT	IP: xxx.xxx.xxx.xxx PORT: [1,65536]
12	Open/ Close GPRS function	W*****,013,X	X=0, Close GPRS X=1, Open GPRS
13	Set time interval of send a GPRS package	W*****,014,XXXXX	XXXXX: means times interval, (Unit: 10s) The max length of XXXXX is in 4 digits XXXXX= 00001, means time interval is 10s
14	Set IO (effective OUT2/OUT3)	W*****,019,P,F	P only 2 or 3 ,means OUT2,OUT3 F=0 means output F=1 means input
15	Control output	W*****,020,P,F	P only one of the 1,2,3 means OUT1,OUT2,OUT3 F=0, Close position output F=1, Open position output
16	Set power saving	W*****,021,XX###	XX=00 Banned power saving (Default) XX=01, Small power saving XX=02, Big power saving
17	Set SMS mode	W*****,023,X	=0 Text mode (Default) =1 PDU mode
18	Set the Reply SMS phone number prefix	W*****,502,*Data#	Data: InChina: +86 , Italy: +39 In USA: +1 For example: W*****,502,*+86#
19	Set monitor number	W*****,030,T	T is mobile phone no.or fix phon no. for example 13824787740or075582941987 To cancel ,Please Send

			W*****,030,1#
20	Set SMS prefix characters	W*****,501,*Data#	Data: Prefix characters max 10
21	Initialization parameters	W*****,990,099## #	Press SOS and CALL B 3s after, within 120s received the information means changing all for factory setting
22	Password initialization	W888888,999,666	Press CALL B and CALL C 3s after, within 120s received means password initialization 000000

9 SMS INSTRUCTION EXAMPLE

1. Send Instruction "**W*****,000**"

Meaning: Apply one position, WT-1021 will reply one position SMS

2. Send Instruction "**W*****,002,005**"

Meaning: Set the time interval of position refresh, WT-1021 will replay one position SMS each 5 minutes in SMS working mode.

3. Send Instruction "**W*****,003,3,1,(area number)+13628888444**"

Meaning: When the SOS button is pressed, the WT-1021 will send one SMS to "13628888444", and then dial up "13628888444"

4. Send Instruction "**W*****,003,3,2,(area number)+13628888444**"

Meaning: When the Dial button B be pressed, the WT-1021 will send one SMS to "13628888444", and then dial up "13628888444"

5. Send Instruction "**W*****,003,1,3,(area number)+013628888444**"

Meaning: When the Dial button C be pressed, the WT-1021 will only send one SMS to "13628888444"

6. Send Instruction "**W*****,005,03**"

Meaning: When the speed is up 30 km/h, the WT-1021 will send one Alarm SMS the mobile phone linking to SOS alarm

10 GPRS COMMUNICATION SETTING

Step1: Make sure that your SIM card in WT-1021 have the GPRS function

Step2: Set the phone number of WT-1021 by send one SMS:

SMS Format: **W*****,010,TrackerID**

For Example: **W000000,010,123**

"123" can be considered to be the device's name. (Tracker ID must be <14 digits)

If there are several devices, you can use their Tracker ID to differ from each other.

WT-1021 will response one SMS to confirm the setting.

Step3: Set IP address and Port by send one SMS

SMS Format: **W*****,012,IP,PORT**

Make sure that the IP should be the Extranet IP. If your pc is in Intranet, you must know your Extranet IP. You can know your PORT from the router's configuration.

Now there are two ways of getting your IP address and PORT:

First, you can get your IP and port through the DOS Order: ipconfig.

Second, the IP address and PORT can be got from IT supports, such as some IT support websites..

FORMAT:

IP: xxx.xxx.xxx.xxx

PORT: [1,65536]

For example: **W000000,012,202.116.11.12,8000**

WT-1021 will response one SMS to check it.

Like **"Set IP ok /202.116.11.12#8000"**

Step4: Set APN

SMS Format: **W*****,011,APN**

APN is your username when you use the GPRS function, and it is used to be connected to the internet.

For example: **W000000,011, CMNET**

WT-1021 will response one SMS to check it

Like **"Set APN OK /CMNET"**

Step5: Set time interval of sending GPRS package

SMS format: **W*****,014,XXXXX** (in units of 10 seconds)

(Be sure that the time interval should be FIVE digits).

XXXXX: Means time's interval, (Unit: 10s)

The max length of XXXXX is in 5 Digits

XXXXX=00001, means time interval is 10s

For example: **W000000,014,00003**

WT-1021 will send a GPRS package every 30 seconds

Like **"Set GPRS Timer ok/00003"**

Step6: Enable GPRS function

SMS format: **W*****,013,X**

X=0, Close GPRS

X=1, Open GPRS

For example: **W00000, 013, 1**

WT-1021 will response one SMS to confirm the setting.

Like "open tcp ok"

(Note: 1 Default value is GPRS Disable
 2 SMS W0000,013,0 is disable GPRS function)

Step7: According to the document of << GTP communication protocols of WT-1021>>, the server can analyses the GPRS data.

11 CAUTION

- a. This device is not design for water-proof, and you must use the water-proof bag accessory
- b. This device must work with GPRS/GSM network.
- c. Make sure enough deposit in the SIM card to avoid any in convince.

12 TROUBLE SHOOTING

If you find some trouble in using WT-1021, please refer the following:

1. Check GPS signal is normal

In normal, the blue led should in rapid blink ---- light for 0.1 second and then dark for 2.8second in turn

If blue led is not in this correct state, it indicates GPS signal is too weak to get position info.

Please check following issue:

- (a) Working outdoor, WT-1021 can get better GPS signal;
- (b) The front side of WT-1021 should be placed toward sky;
- (c) Charging WT-1021 for 3 hours for the tracker has enough power before usage

2. Check GSM signal is normal

In normal, the green led should in rapid blink ---- light for 0.1 second and then dark for 2.8s in turn

If green led is not in this correct state, it indicates GSM communication is wrong please tried following issue:

- (a) Whether the GSM network is strong enough to make the track unit work.
You can judge it by calling someone thorough your cell phone.
- (b) Whether the SIM card is installed correctly or not, and tries to pull out and insert SIM card as following picture shows to ensure it; try this operation a few times may help to ensure correct installation
- (c) Whether there is enough deposit in SIM card or not;
- (d) Whether your SIM card in WT-1021 support SMS function or not, (including send SMS and receive SMS)

- (e) Whether SIM card has specific requirement on cell phone or not, for example whether the SIM card can only use in a appointed cell phone, other cell phone cannot use the SIM card
 - (f) Whether SIM card is binding to the specific cell phone or not
 - (g) Whether SIM card need some authorization when using it.
For example, you need type one password when you use the kind of SIM cards
 - (h) Whether the tracker has enough power to work, we strongly suggest it was charged at least 3 hours before use it
3. The SMS which it replied by WT-1021 is including the chars --- "Last"
It is indicate the GPS signal is weak.

13 ATTACHMENT: WOLDWIDE APN (ACCESS POINT NAME) LIST

Country	Mobile Operator	Access Point Name
Argentina	Personal	gprs.personal.com
Argentina	Unifon	internet.gprs.unifon.com.ar
Australia	Telstra	telstra.internet
Australia	Optus	internet
Australia	Three	3netaccess
Australia	Vodafone	internet
Austria	Max Online	gprsinternet
Austria	One	wap.one.at
Belgium	Orange	orangeinternet
Belgium	Mobistar	web.pro.be
Belgium	Proximus	internet.proximus.be
Bermuda	AT&T	proxy
Bermuda	Mobility	net.bm
Brazil	Claro	claro.com.br
Brazil	Oi	gprs.ou.com.br
Brazil	TIM	tim.br
Bulgaria	Mobitel (Mtel)	inet-gprs.mtel.bg
Canada	Fido	internet.fido.ca
Canada	Rogers AT&T	internet.com
Chile	Entel PCS	imovil.entelpcs.cl

		bam.entelpcs.cl
Chile	Telefonica GSM	web.tmovil.cl
China	China Mobile	cmnet
Croatia	VIPNET	gprs.vipnet.hr
Czech Republic	Eurotel	internet
Czech Republic	Oskar	internet
Czech Republic	Oskar prepaid cards	ointernet
Czech Republic	T-Mobile	internet.t-mobile.cz
Denmark	TDCmobil	internet
Denmark	Oarnage	web.orange.dk
Egypt	Vodafone	internet.vodafone.net
Dominican Republic	Orange Dominicana	drangenet.com.do
Finland	Telia Mobile	internet
Finland	DNA	internet
Finland	Sonera	internet
Finland	Radiolinja	internet
Finland	Saunalahti	saunalahti
France	Orange	orange.fr
France	SFR	websfr
France	Bouygues Telecom	eBouygTel.com
Germany	D2 Vodafone	web.vodafone.de
Germany	E-Plus	intenet.eplus.de
Germany	O2	internet
Germany	Quam	quam.de
Germany	T-Mobile D1	intenet.t-d1.de
Greece	Vodafone	internet.vodafone.gr
Greece	Telestet	gint.b-online.gr
Greece	Cosmote	internet
Hungary	Vodafone (Prepaid "Optimized")	vitamax.internet.vodafone.net
Hungary	Vodafone (Prepaid "Standard")	vitamax.snet.vodafone.net
Hungary	Vodafone (Postpaid "Optimized")	internet.vodafone.net
Hungary	Vodafone (Postpaid "Standard")	standardnet.vodafone.net
Hong Kong	CSL	internet

Hong Kong	Orange	web.orangehk.com
Hong Kong	New World	internet
Hong Kong	People	internet
Hong Kong	SmarTone	internet
Hong Kong	Sunday	internet
India	Orange, Hutch	www
Iceland	Siminn	gprs.simi.is
India	BPL Mobile	bplgprs.com
India	Airtel	airtelgprs.com
Indonesia	Telkomsel	internet
Ireland	O2	internet
Ireland	Vodafone	live.vodafone.com
Israel	Cellcom	internetg
Israel	Orange	internet
Italy	TIM	uni.tim.it ibox.tim.it
Italy	Vodafone Omnitel	web.omnitel.it
Italy	Wind	internet.wind
Latvia	Latvia Mobile Telefone	internet.lmt.lv
Luxembourg	LUXGSM	web.pt.lu
Luxembourg	Tango	internet
Malaysia	Celcom	celcom.net.my
Mexico	Movistar	internet.moistar.mx
Mexico	Telcel	internet.itelcel.com
Montenegro	Monet	gprs.monetcg.com
Netherlands	T-Mobile	internet
Netherlands	KPM Mobile	internet
Netherlands	Orange	internet
Netherlands	O2	internet
Netherlands	Vodafone (normal)	web.vodafone.nl
Netherlands	Vodafone (business)	office.vodafone.nl
New Zealand	Vodafone NZ	www.vodafone.net.nz
Norway	Netcom	internet.netcom.no
Norway	Telenor	internet
Pakistan	UFone	ufone.internet
Paraguay	Personal	internet
Paraguay	Tigo	internet.tigo.py

Philippines	Smart	internet
Philippines	Globe	internet.globe.com.ph
Poland	Era	erainternet
Poland	Idea	www.idea.pl
Poland	PlusGSM	www.plusgsm.pl
Portugal	Optimus	internet
Portugal	TMN	internet
Portugal	Vodafone (Telcel)	internet.vodafone.pt
Romania	Connex	internet.connex.ro
Romania	Orange	internet
Russia	BeeLine	internet.beeline.ru
Russia	Megafon	internet.nw
Russia	MTS	internet.mts.ru
Russia	PrimTel	internet.primtel.ru
Saudi Arabia	Saudi Telecom	jawalnet.com.sa
Serbia-Montenegro	Mobtel Srbija	internet
Serbia-Montenegro	Telekom Srbija	gprsinternet
Singapore	M1	sunsurf
Slovakia	Eurotel	internet
Slovakia	Orange	internet
South Africa	MTN	internet
Spain	Amena	amenawap
Spain	Telefonica (Movistar)	movistar.es
Spain	Vodafone	airtelnet
Sweden	Telia	online.telia.se
Sweden	Vodafone SE	internet.vodafone.net
Switzerland	Swisscom	gprs.swisscom.ch
Switzerland	Orange CH	internet
Switzerland	Sunrise	internet
Switzerland	UMC	www.umc.ua
Taiwan	Chunghwa Telecom	internet
Taiwan	Far EasTone	fetnet01
Taiwan	KG Telecom	internet
Taiwan	Taiwan Cellular	internet
Thailand	AIS	internet
Thailand	DTAC	www.dtac.co.th
Turkey	Avea	internet

Turkey	Aycell	aycell
Turkey	Telsim	telsim
Turkey	Turkcell	internet
UK	Jersey Telecom	pepper
UK	O2	mobile.o2.co.uk
UK	T-Mobile	general.t-mobile.co.uk
UK	Vodafone UK	internet
UK	Orange	orangeinternet
Ukraine	Kyivstar GSM	www.kyivstar.net
Ukraine	UMC	www.umc.ua
USA	T-Mobile	internet2.voicestream.com
USA	AT&T	proxy
USA	Cingular	isp.cingular
Venezuela	Digital TIM	gprsweb.digitel.ve