



SAMSUNG

TECHWIN

**Samsung Digital Presenter
(SDP-860)
Software User's Manual**



SAMSUNG

**TECHWIN
TECHWIN**



SAMSUNG

Table of Contents

Installing Samsung Digital Presenter Program	1
System Requirements	1
Installing Program	2
Connecting Samsung Digital Presenter to a Computer	2
Installing the Samsung Digital Presenter Program	3
Installation Q&A	6
How can I check if my computer supports USB?	6
How can I delete USB drivers and the Samsung Digital Presenter program from my computer?	6
Opening Samsung Digital Presenter Program	7
Features of Samsung Digital Presenter	8
Samsung Digital Presenter Feature Tabs	9
Ratio and Image save Tab	9
Options & Information Tab	11
Main Features of Samsung Digital Presenter USB Program	12
Record Video	12
Image and Print	14
Troubleshooting	17

Installing Samsung Digital Presenter Program

When connected to a computer, Samsung Digital Presenter can be used to save projected images as picture or video files.

To use this feature, connect the digital presenter to a computer using the USB cable that is included in the presenter package. Then install the Samsung Digital Presenter program from the CD that is also included in the presenter package.

System Requirements

- CPU: Pentium 4 or above (Core2 duo or higher recommended)
- Windows XP Service Pack 2 or higher
 - Compatible Windows Programs: Windows XP (service pack 2) / Windows Vista / Windows 7
 - Must have Windows XP service pack3 – one function (Framerate control)
- RAM: 512MB or more (2GB or more recommended)
- USB 2.0 Port
- Graphic Cards that support the XGA resolution with at least 65,536 colors
 - Video RAM 256MB or more
 - SXGA or higher resolution recommended
- CD-ROM Drive

◆ Note

- Samsung Digital Presenter's USB 2.0 mode may not function properly in computers with USB 2.0 PCI/PCMCIA cards.

Installing Program

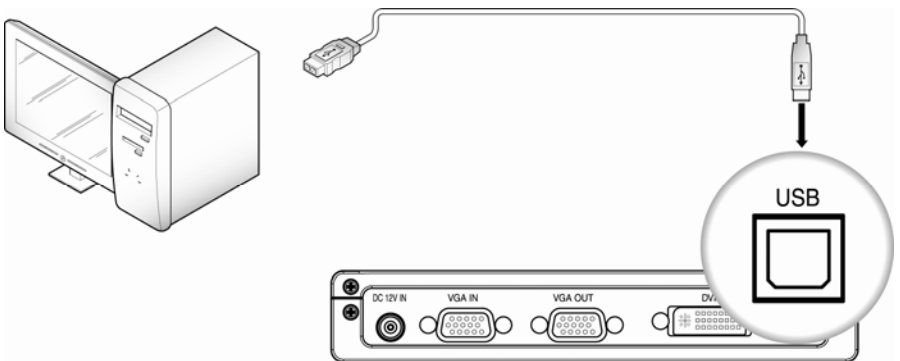
Please install the program following the instructions below.

1. Connect the Samsung Digital Presenter to a computer using the enclosed USB cable, and then turning it on.
2. Installing the Samsung Digital Presenter program. (For more detailed instructions, please refer to Page 3.)

Connecting Samsung Digital Presenter to a Computer

Connect the USB cable to the USB port of your computer and digital presenter.

Connect the power cable of the digital presenter, and then turn on the power.

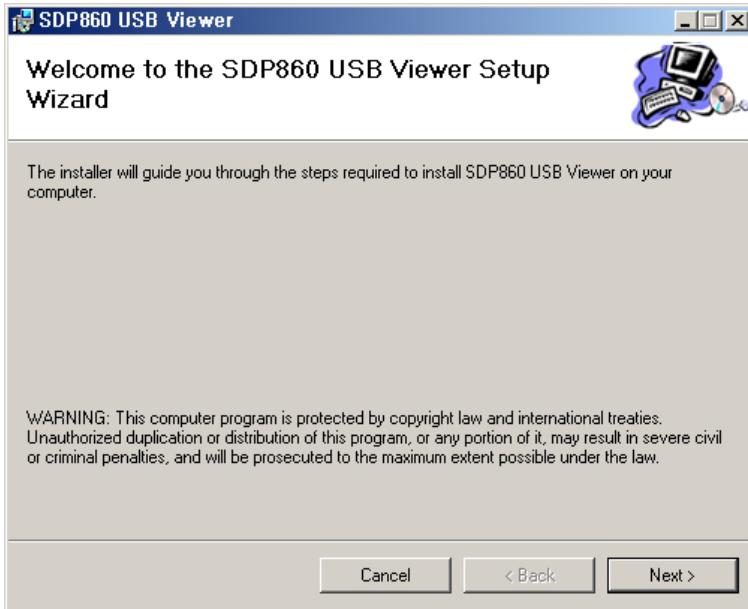


◆ Caution

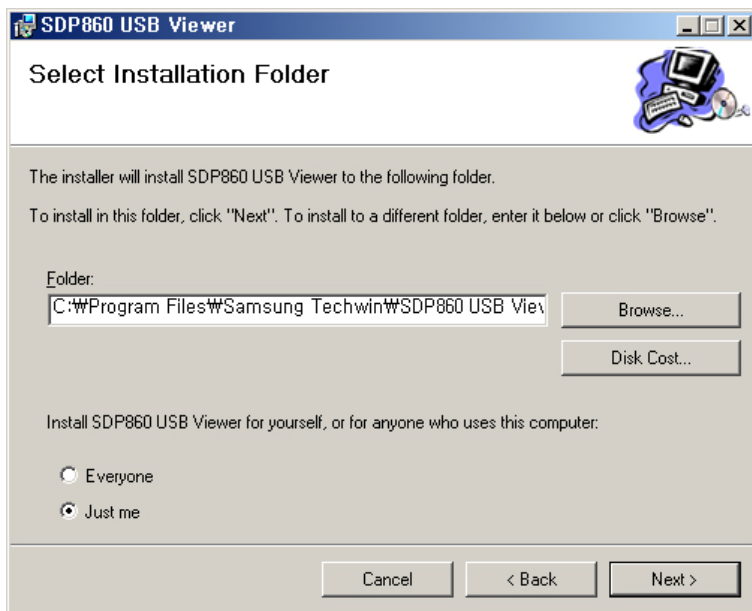
- When connecting the USB cable to a computer, please use a USB port that is connected directly to the computer main board.
(An extended front port and wireless USB hub may cause errors depending on the computer brands and models.)
A 5m or shorter USB cable is recommended to connect a digital presenter and a computer.

Installing the Samsung Digital Presenter Program

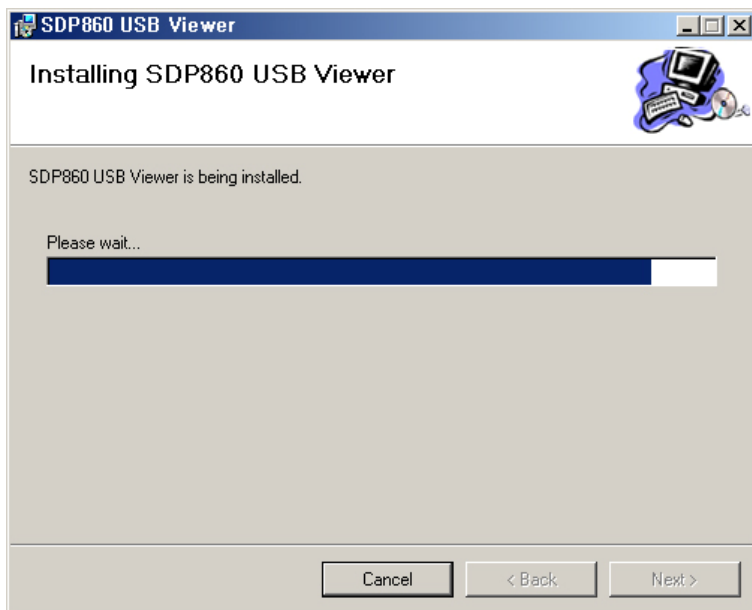
1. You may install the program in a computer before connecting the computer with the digital presenter via USB; the presenter will function properly.
2. Insert the enclosed CD, and then select your language (English) when the AutoRun window appears. Click on Install Viewer to start installing the program.
3. When the following installation window appears, press *Next*.



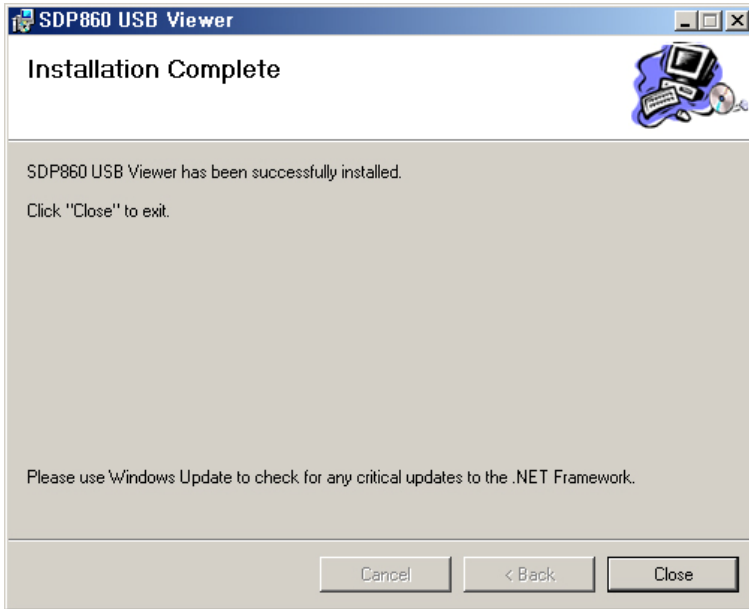
4. Select a folder to install the program, and then press Next to start the installation process.



5. The program is being installed while the following progress window remains on the screen.



6. The installation is complete as the following dialog appears.



When the installation is complete, the SDP 860 USB Viewer icon appears on the Desktop along with the program and user's manual shortcuts under the Start menu.



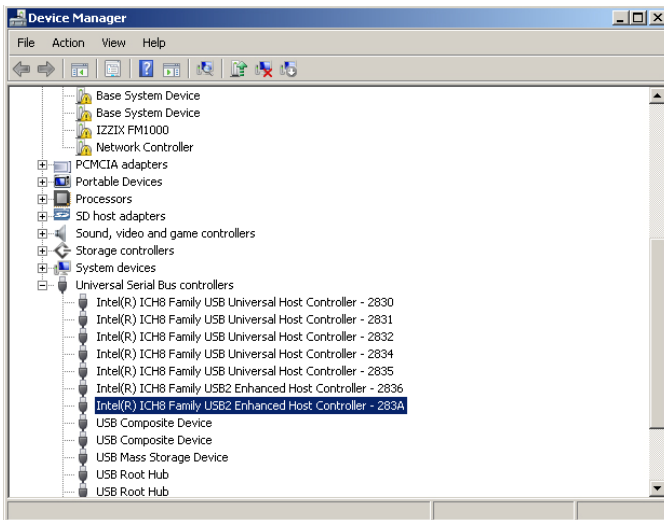
◆ **Caution**

- If you receive a .Net Framework error message during the installation, it indicates that your computer is not installed with .Net Framework. To resolve this problem, first install the .Net Framework installation file in the enclosed CD, and then the viewer program.

Installation Q&A

How can I check if my computer supports USB?

1. This guideline is based on Widows Vista. Other Windows versions may use different steps to check Device Manager.
2. In Windows Vista, go to [Control Panel] → [System] → [Device Manager].
3. As shown in the picture below, your computer displays USB-related features--USB Universal Host Controller, USB root hub, etc.—(if USB connections are supported).
4. As shown in the picture below, your computer displays USB Enhance Host Controllers if it supports USB 2.0 connections.



How can I delete USB drivers and the Samsung Digital Presenter program from my computer?

Go to [Control Panel] → [Add or remove programs], select SDP USB Viewer, and then click on [Remove/Change] to uninstall or restore the program. Follow instructions on the Remove/Change screen to uninstall or restore the program.

- ※ Samsung Digital Presenter does not require the installing or deleting of USB drivers. Unlike other brands, our presenter supports UVC, allowing you to connect it to a computer via USB without installing or deleting additional software.

Opening Samsung Digital Presenter Program

1. Turn on the presenter and computer.
2. To open the presenter program in your computer, double-click on the Samsung Digital Presenter icon on Desktop or go to [Start] → [Programs] → [SDP86 USB Viewer].
3. The digital presenter program opens with a ribbon bar on top.

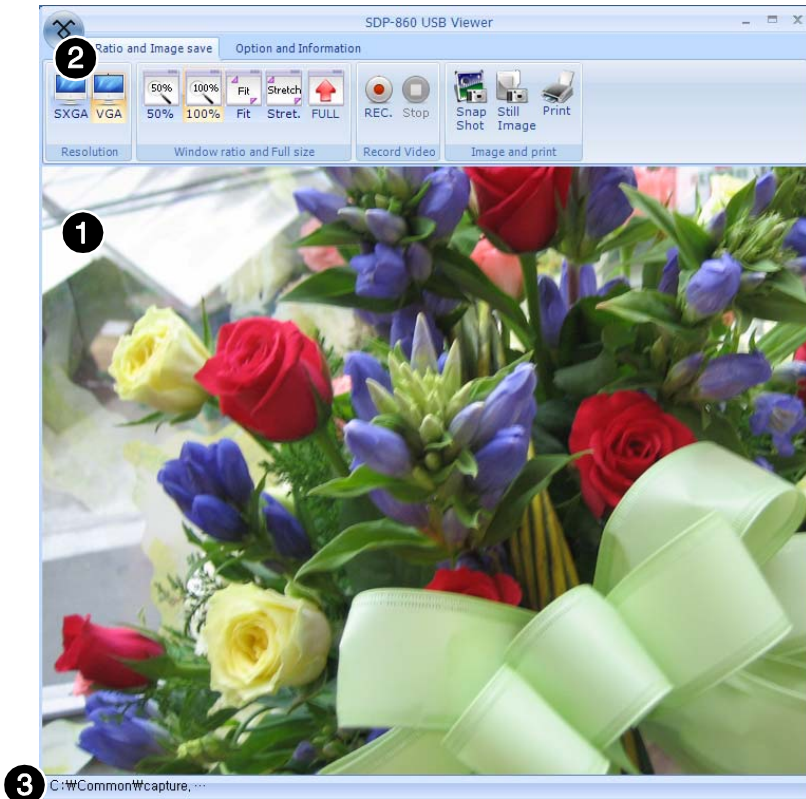
◆ Note

- If the program does not open, please check if both the presenter and computer are turned on or the USB cable is properly connected to both of them.

◆ Caution

- Do not unplug the USB cable or turn off the digital presenter while playing, capturing, or saving files using the digital presenter program; it may damage your digital presenter and/or computer.

Features of Samsung Digital Presenter



1

View Area

Displays an image that is being projected from the digital presenter lens.

This area is used as the preview screen to save pictures or record videos using buttons on top.

2

Ratio & Image save Tab

Provides 4 options: Resolution, Window Ratio and Full Size Recording Video, & Image and Print.

3

Video Recording Information (Window Bottom Status Bar)

- Video Saving Directory: Displays the directory and filename of video.
(To change the directory, press the Rec. button to access the Settings window.)
- This status bar also displays the captured time of video.

Samsung Digital Presenter Feature Tabs

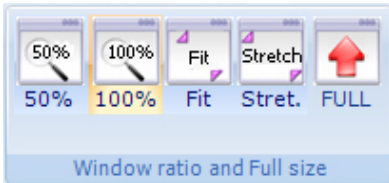
Ratio and Image save Tab

Resolution



The SDP 860 USB Viewer program supports 2 output resolutions: SXGA and VGA. (SXGA runs at 15 frames per second while VGA does at 30 frames.)

Window ratio and Full size



Enables to zoom in or out on the screen depending on the output resolutions, or changes to the Full Screen.

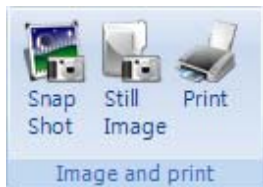
- **50%:** Displays an image at the 1:4 ratio of the actual resolution.
- **100%:** Displays an image at the actual resolution.
- **Width:** The width of an image is adjusted automatically in proportion to the width of the USB viewer program.
(The display ratio is retained.)
- **Stretch:** Adjusts the size of an image to fit the window of the USB viewer program.
Caution: When using Stretch, the current display ratio changes.

Record Video



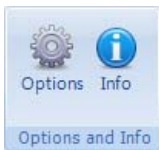
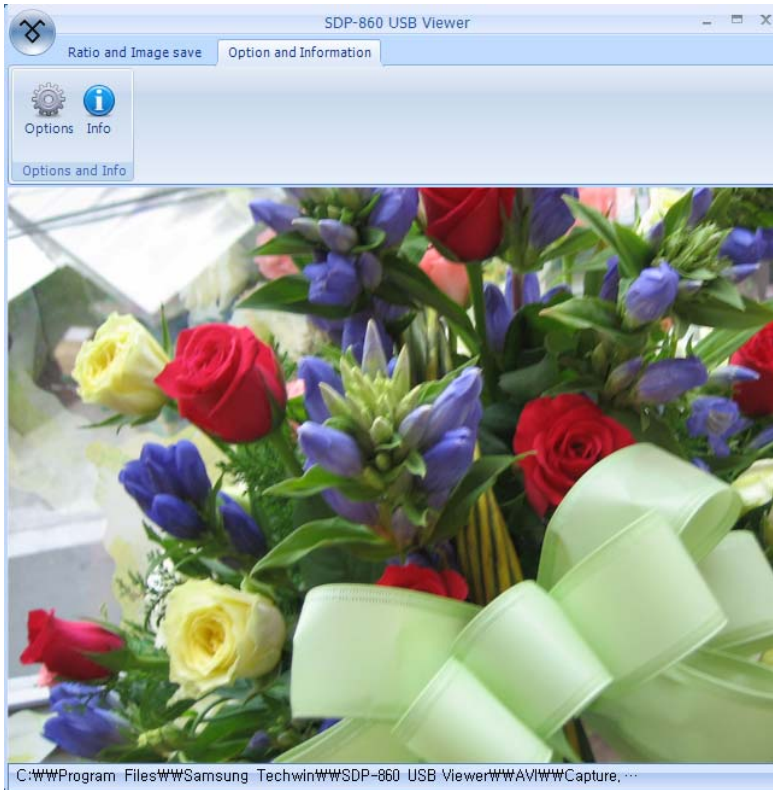
Records an image in the View Area as a video file. For more detailed information, please refer to Record Video (Page 12).

Image and Print



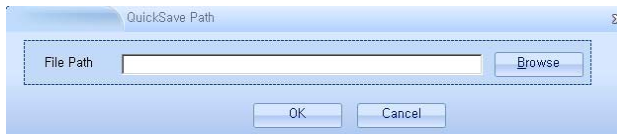
Saves or prints an image in the View Area as an image file. For more detailed information, please refer to Image and Print (Page14).

Options & Information Tab



Displays the Quick Save options and the version information of the Samsung Digital Presenter USB viewer program.

- **Options:** Enables to change the directory of the Quick Saved files.



(The default directory is C:\Quickcap.)

- **Info:** Displays the version information of the Samsung Digital Presenter USB viewer program.

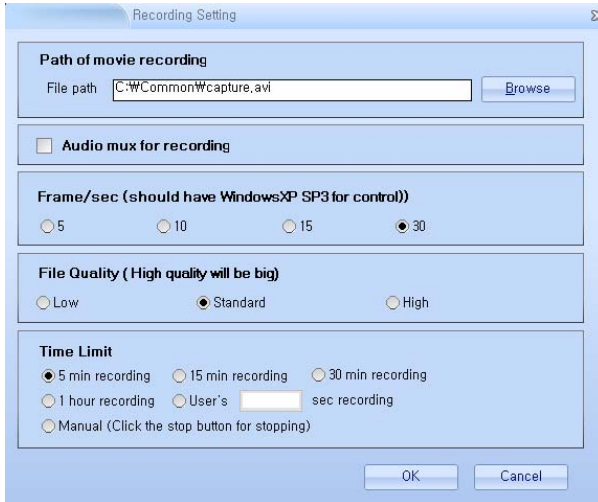
Main Features of Samsung Digital Presenter USB Program

Record Video



Records an image in the View Area as a video file.

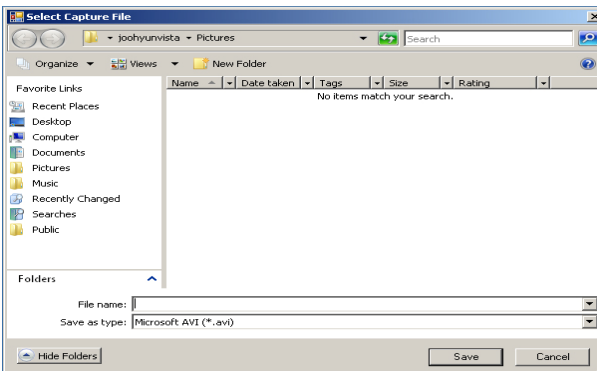
Clicking on the Rec. button brings up the following window displaying the detailed record settings options.



1. Video Directory & Filename



Change the directory and filename of video. The [Browse] button brings up the following window, allowing you to change the directory and filename of video.



2. Audio Input & Recording Codec

 Audio mux for recording

The Samsung Digital Presenter USB viewer program can record audio along with video. When checking on the audio input option, the viewer records video and audio using the ADPCM codec.

3. Recording Frames

Frame/sec (should have WindowsXP SP3 for control)

5
 10
 15
 30

Changing Recording Frames

The SXGA resolution can save a maximum of 15 frames per second while VGA does 30 frames. The more frames enhances the video quality, but it increases the file size. Select the frames that can satisfy both desired video quality and size.

(You should install Windows XP Service Pack 3 for using frame rate control function.)

4. Selecting Video Quality

File Quality (High quality will be big

Low
 Standard
 High

Select Video Quality (Affects the file size and video quality.)

LOW provides the highest video quality. Standard is a normal quality, and High creates a lot of noise. The default quality is Standard.

The LOW compression rate provides the highest video quality, but increases the file size. Select a compression rate that can satisfy both desired video quality and size.

5. Selecting Recording Time

Time Limit

5 min recording
 15 min recording
 30 min recording

1 hour recording
 User's sec recording

Manual (Click the stop button for stopping)

You can change the recording duration. When selecting Unlimited, you can stop recording video at any time.

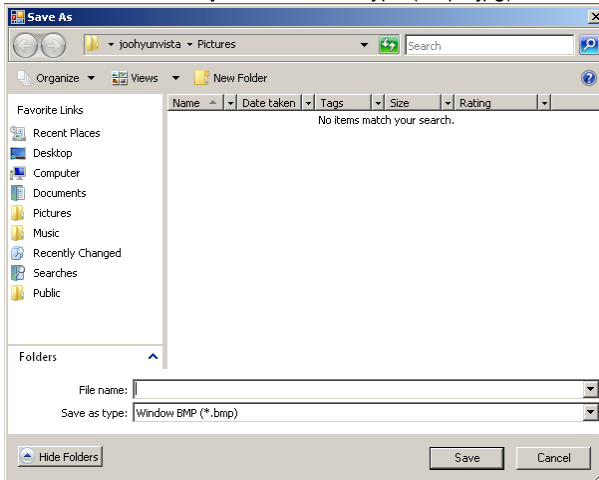
Image and Print



You can save the current projected image as BMP or JPEG formats, and print it using a printer that is connected to the computer.

Save Image

1. To save an image, press the [Save Images] button.
2. Select the file directory, filename, and type (bmp / jpg), and then press [Save].



Print Image

1. To print an image, press [Print] to bring up the Print settings window.
2. Select a printer, paper size, and other detailed options, and then press [OK] to print out the current image on the screen.

Quick Save Option

Enables you to quickly save a video that is currently being played on the screen.

This Quick Save option is exclusively for the USB 2.0 mode. You can change the Quick Saved image folder at Option Information > Option.

(The default directory is C:\QuickCap.)

How to Quick-Save

1. While playing an image from the digital presenter on the View Area, press the [Q-SAVE] button to save the image quickly.
2. The image is saved in the JPEG format at the default folder: C:\QuickCap. You can change the folder for your convenience.
3. The filename cannot be customized, however, as it is automatically saved in the name of YYYYMMDDHHMMSS.jpg that is based on the current time.
(e.g.: If the captured time is 2009 September 09 at 15:23:40, the filename is 20090909152340.jpg.)

◆ Note

- Pressing Q-SAVE more than twice per second saves only the latest image in the computer hard disk.

Start Button



The Start button—on the upper left side of the screen—enables easy access to the options of the Ratio & Image save and Option and Information tabs.

You can select a desired option under the Start button or tabs for your convenience.

Troubleshooting

Problem	Cause & Solution
Digital presenter program does not open	<p>It indicates a USB connection problem between the digital presenter and a computer.</p> <ul style="list-style-type: none"> ▶ Please check if the USB cable is properly connected to both the presenter and the computer. ▶ Close all application programs—USB-related or other programs that take up a lot of the system resources—to avoid slowing down the digital presenter program. ▶ Turn off the digital presenter and turn it on after at least 10 seconds. Then try to open the program again.
Error Message: "A USB connection error has occurred; the program is now being terminated."	<p>It indicates a USB connection problem between the digital presenter and a computer.</p> <ul style="list-style-type: none"> ▶ Please check if the digital presenter is turned off or the USB cable is unplugged. ▶ A 5m or shorter USB cable is recommended to connect the digital presenter and a computer. (For USB 2.0, a 4m or shorter cable is recommended.) ▶ If the computer has too many programs running, it may experience a shortage of memory or system resources and cause the video communication error.
Error Message: "The program is already running."	<p>This error message may appear if you try to reopen the program while it is running.</p> <ul style="list-style-type: none"> ▶ The program cannot be opened twice, the prompt error message will display if tried. ▶ Please wait until the program opens at the first time. If it does not open or terminates itself abnormally, remove and reconnect the USB cable, or restart your computer operating system.
If a computer fails to detect the digital presenter	<ul style="list-style-type: none"> ▶ If your computer fails to detect the digital presenter, please restart it and then try again.
Error Message: "Failed to save the image."	<p>Saving an image may fail in the following cases:</p> <ul style="list-style-type: none"> ▶ You may have selected an improper drive—CD-ROM, or mobile hard disk that is limited in writing—for the Quick Save or image folder to save the image. Please change the directory to the computer hard drive, and then try to save it again. ▶ You may have selected a file format that the program does not support. ▶ The program library for saving images may have been deleted or corrupted. Please uninstall and reinstall the digital presenter viewer program.

Problem	Cause & Solution
Error Message: "A high-speed USB device has been inserted to a non high-speed hub" in a computer with the USB 2.0 controller	<p>In this case, the viewer program runs in the USB 1.1. mode.</p> <ul style="list-style-type: none">▶ Check if the USB 2.0 feature is enabled at the CMOS environment of the computer.▶ For Windows XP, please download and install the latest USB patches.▶ Disable [Allow the computer to turn off this device to save power] at the power management option at the USB hub list in [Control Panel].▶ Disable the Power Management (S3) option of your computer.
My computer has the USB 2.0 controller, but the selected video frame rates don't apply properly.	<ul style="list-style-type: none">▶ USB transfers data using the computer CPU resources. If the CPU model is older, or an overloading program is running on the background in the computer, the SDP-860 Viewer may experience degradation in video quality. Please keep all programs closed while using the digital presenter USB program.▶ Computers with a DVMT (Dynamic Video Memory Technology) built-in graphics card may cause degradation in the program performance and video quality due to the limitation in graphics processing.▶ Your computer may have detected the digital presenter program at the USB 1.1 version: If you open the digital presenter program after receiving "A high-speed USB device has been inserted to a non high-speed hub," the program runs in the USB 1.1 mode and plays video at lower frame rates. If this happens, please remove and reconnect the USB cable between the computer and digital presenter; the computer will detect the viewer program at the USB 2.0 version.

Memo

SAMSUNG TECHWIN

SAMSUNG

SALES NETWORK

SAMSUNG TECHWIN CO., LTD.

145-3, Sangdaewon 1-dong, Jungwon-gu, Seongnam-si Gyeonggi-do, Korea, 462-703

TEL: +82-31-740-8151~8 FAX: +82-31-740-8145

SAMSUNG TECHWIN AMERICA Inc.

1480 Charls Willard St, Carson, CA 90746, UNITED STATES

Tol Free: +1-877-213-1222 FAX: +1-310-632-2195

www.samsungcctvusa.com

SAMSUNG TECHWIN EUROPE CO., LTD.

Samsung House, 1000 Hillswood Drive, Hillswood Business Park Chertsey, Surrey, UNITED KINGDOM KT16 OPS

TEL: +44-1932-45-5300 FAX: +44-1932-45-5325

www.samsungtechwin.com

www.samsungpresenter.com

P/No: Z6806.1064.01A