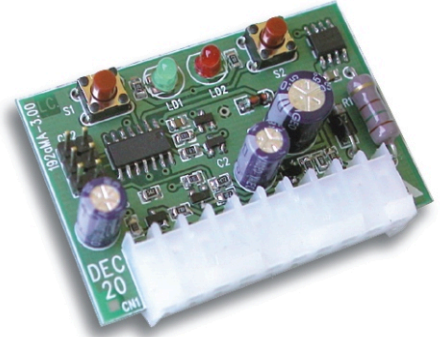


- up to 4096 programmable codes.
- Programming by auto-acquisition or through buttons.
- Receipt on A and B channels.
- Installation on central unit board by connectors.
- Power supply voltage: 24Vac
- Max. absorption: 40mA
- Dimensions: 53x38mm



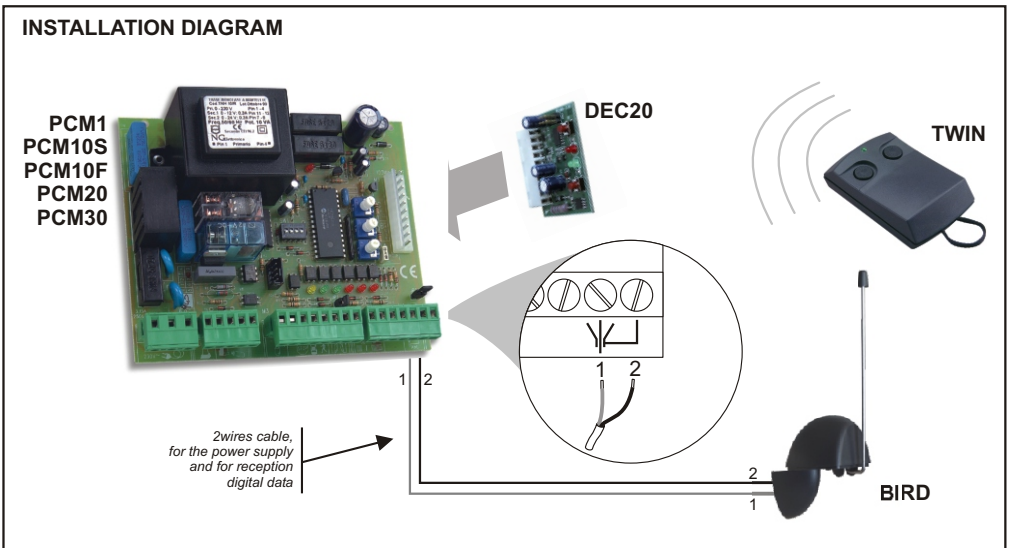
DEC20 is a twin channels decoder for BIRD antenna receiver and it's used for the installation on PCM1, PCM10F, PCM10S, PCM20 e PCM30 automation central units.

INSTALLATION

1. Insert DEC20 circuit on PCM1, PCM10F, PCM10S, PCM20 or PCM30 central unit connector.
2. Use a 2wires cable + shield (2S type) to connect BIRD antenna to the terminal board of PCM central unit. It's recommended to respect "1" and "2" connection. If on the terminal board, the symbol of coaxial antenna is silked screen, connect "1" wire of BIRD antenna where is silked screen "polo caldo" and "2" wire where is silked screen "schermatura" (shielding).

We suggest you to **do not pass** this connection cable to BIRD antenna with other cables.

INSTALLATION DIAGRAM



PROGRAMMING MODES

Code display

- Keep down S1 button (to display A channel code) or S2 button (to display B channel code);
- The LED of the channel will turn on;
- Release the button in 5 seconds (when the LED is **turned on**, before that this one will start to blink);
- The 12-bit code will be displayed by a sequence of blinking of two LEDs (in this case, the LED function is not as channel identification):
 - one blinking of green LED indicates **"1"** (dip switch **ON**)
 - one blinking of red LED indicates **"0"** (dip switch **OFF**)
- At the end of the sequence, you'll exit automatically from the programming mode;
- To exit in every moment, press one fo two buttons; the LED of the channel will start to blink fast and then it will turn off.

Auto-acquisition of code

- Keep down S1 button (to program A channel code) or S2 button (to program B channel code);
- The LED of the channel will turn on, and after 5 seconds it will start to blink;
- Release the buttons in 10 seconds (during LED **blinking**, before that this one will start to flash);
- The LED will continue to blink, and auto-acquisition function will start;
- Press remote-control button that you want program in 5 seconds;
- At the end of auto-acquisition, the channel output will be activated for few seconds, the LED of the channel utters a sequence of blinkings, then it will turn off and you will exit automatically from the programming mode;
- To exit in every moment from this programming mode, press one of the two buttons; the LED of the channel will start to blink fast and then it will turn off. No code will be memorized.

Manual programming of code

- Keep down S1 button (to program A channel code) or S2 button (to program B channel code);
- The LED of the channel will turn on, after 5 seconds it will start to blink and after other 5 seconds it will start to utter a flash every half second;
- Release the buttons in 15 seconds (during LED **flashing**);
- Now it's possible to enter the 12-bit code consisting of **"0"** and **"1"** using the buttons (in this case, buttons function is not as channel identification):
 - S1 buttons to enter **"1"** (dip switch **ON**), and then green LED utters a blinking
 - S2 buttons to enter **"0"** (dip switch **OFF**), and then red LED utters a blinking
- At the end, the LED of the channel utters a sequence of fast blinkings and then it turns off, you will exit automatically from the programming mode;
- To exit from this programming mode in every moment, please do not enter the code by the buttons; after 5 seconds of no-action, the LED of the channel utters a sequence of fast blinkings and then it turns off. No code will be memorized.

NOTE: If you keep down one of two buttons for 15 seconds, the respective LED will start to blink fast for a moment, but no action is possible.