

USER MANUAL

NAME: **VIDEO DOOR BELL – PEEPHOLE VIEWER
GSM / GPRS**

MODEL: **iSmartEye i10+**



**PLEASE READ THE INSTRUCTIONS
BEFORE USING THE UNIT.
SAVE IT FOR USE IN THE FUTURE.**

iSmartEye video peephole viewer is dedicating to equipping modern fashion life with high-tech products, its intelligent doorbell is a practicable high-tech household intelligent product integrating doorbell, photo-taking, video-recording, mobile phone and mail functions into one device. Adopting the latest energy saving technology, its unique connection method and fashionable appearance design make it the first choice of your high-quality intelligent life.

This product is convenient to install, and simple to use. Its originality redresses the defect of “hearing the voice but without seeing the man” of traditional doorbells. Both the aged and children at home can easily operate and clearly identify the outdoor visitor, helping us to improve the home security. Its automatic photo-taking and video-recording functions enable you not to miss any visitors during your travelling outdoors.

<i>Introduction</i>	3
<i>Safety Warning & Attentions</i>	3
1. <i>Attention</i>	3
2. <i>Attention for operation of this product</i>	3
3. <i>Attention for operation of charger</i>	3
4. <i>Operation and maintenance</i>	4
<i>Product Overview - Model: i10+</i>	4
1. <i>Characteristics and application:</i>	4
2. <i>Performance parameters:</i>	5
<i>Product diagram</i>	5
<i>Basic structure</i>	6
1. <i>Host Unit</i>	6
2. <i>Extension Unit</i>	6
3. <i>SIM Card</i>	7
4. <i>T-Flash card (micro SD)</i>	7
5. <i>Battery</i>	7
6. <i>Battery Installation</i>	7
<i>Basic functions</i>	8
1. <i>Camera</i>	8
a. <i>Album</i>	8
b. <i>Video</i>	9
2. <i>Mode Selection</i>	9
a. <i>Home Mode</i>	9
b. <i>Outdoor Mode</i>	9
3. <i>File Management</i>	10
4. <i>Phone Number and Email Add</i>	10
a. <i>Phone Number</i>	10
b. <i>Email ADD</i>	11
5. <i>Sensor</i>	11
a. <i>Sensor Setting</i>	11
b. <i>Video Information</i>	11
c. <i>Ring Setting</i>	11
d. <i>Communication methods</i>	11
e. <i>Sound record</i>	11
6. <i>Setting</i>	12
7. <i>Calendar and Schedule</i>	12
<i>Installation guide</i>	13
<i>Attentions during Installation</i>	14
<i>Configuration</i>	14
<i>General failures and solution</i>	14

Introduction

Thank you for choosing this multiple device - *iSmartEye*. Please read this Manual carefully to fully understand its usage, perfect functions and simple operation. This product features music doorbell, photo-taking, video-recording and Night-Vision functions to satisfy your comprehensive home security monitoring requirements.

The Company reserves the right to modify this Manual from time to time without prior notice.

Before using this product, please read these Attentions carefully to ensure safe and proper operation of this product.

Safety Warning & Attentions

1. Attention

- Do not place this product on an uneven or unstable table-board to prevent failure or damage caused by falling.
- Only the battery and charger designated by the Company can be used on this product. Application of other products may lead to leakage, overheating, blowout and fire of the battery.
- Do not violently strike, shake or toss the wireless video door phone to prevent failure and fire caused to the wireless video door phone.
- Do not put battery, charger or wireless video door phone in the microwave oven or high-pressure device; otherwise, damage and fire of electrical circuit and other accidents may be caused.
- Do not use this product in a place with flammable and explosive gas; otherwise, amount of dust; otherwise, product failure may be caused.

2. Attention for operation of this product

- Do not apply force on LCD screen or knock other objects with it, otherwise, breakage and damage of LCD panel and seepage of crystalline liquid will be caused. If the crystalline liquid enters your eyes, there will be danger of amblyopia. Wash your eyes (be sure not rub your eyes) and go to see the doctor immediately.
- Do not dismantle or remodel this product, otherwise, damage, creepage and electrical fault may be caused to this product.
- Do not press the keys with a pin, stump of pen/pencil and other keen-edged objects; otherwise, damage or misoperation will be caused.
- Place tiny metal objects such as drawing pin at a place far away from the speaker. As the speaker has magnetic property while working, it will attract these tiny metal objects, which may lead to personal injuries or damage of the speaker.
- Do not press the terminal of lens at strong light source, such as the sun; otherwise, damage of the image sensor may be caused.
- Do not press the terminal of lens with much force; otherwise, personal injury or damage of the device may be caused.

3. Attention for operation of charger

- You may charge the device with a charger or through a USB data line connected to the computer.
- Charge with matched alternate current; creepage, fire and damage of the door phone and charger may be caused if other voltage is used.
- It is forbidden to short circuit the charge, otherwise, electrical shock, smoke and damage of the charger will be caused.
- Do not use the charger at the time when the power cord is damaged, otherwise, fire and electrical shock will be caused.
- Clear away the dust accumulated on power outlet ASAP.
- Do not place a vessel used to retain water beside the charger to prevent overheating, creepage and failure of charger caused by spilling water.
- If the charger is in contact with water or other liquids, disconnect the power supply immediately to prevent overheating, fire electrical shock and failure of the charger.
- Do not dismantle or remodel this product, otherwise, damage, creepage and electrical fault may be caused to this product.
- Do not use the charger in places with high humidity such as bathroom, otherwise, electric shock, fire and damage of the charger will be caused.
- Do not touch the charger, electrical line and power outlet with wet hand(s), otherwise, electric shock may be caused.
- Do not place heavy objects on the electrical line or refit the electrical line, otherwise, electric shock and fire will be caused.

- Before cleaning and maintenance, first pull the plug off the power outlet.
- Grasp the charger while pulling off the plug, as pulling the electrical line will lead to damage of electrical line, electric shock and fire.

4. Operation and maintenance

- Please keep this product dry, as rainwater, moisture, humidity and liquids or moisture content may contain mineral matters that erode the circuit.
- Do not keep this product in any place with high temperature. As high temperature may shorten the lifespan of electronic device, damage the battery and cause deformation or melting of certain plastic parts and components.
- Do not keep this product in any place with low temperature. As when being moved from a place with low temperature to a place with normal temperature, it may generate humidity inside, which may cause damage of circuit board.
- Do not attempt to dismantle this product. As improper handling by nonprofessional personnel may cause damage of the device.
- Do not toss, knock or shake this product, as tough operation mode may damage the motherboard inside the device.
- If this product is made wet by mistake, shut it down, remove the battery, and restart the product after confirming it complete dry after 24 hours.
- Do not have the metal parts (specially configured interfaces of charger and data line excluded) in contact with charger interface to avoid short circuit.
- Use clean and dry soft cloth to clean the lens, infrared lamp and light sensor.

Warning: improper operation will void warranty!

VIDEO DOOR BELL – PEEPHOLE VIEWER GSM / GPRS

Product Overview - Model: **i10+**

1. Characteristics and application:

1. Fashion appearance – adopt European design, full of modern science and technology feeling, suitable for houses of various decorative styles.
2. Extra large range of vision: an extra wide angle viewable.
3. High-resolution color LCD screen – adopting 5-inch mainstream TFT digital LCD screen, delivering outstanding clarity. Children or the aged, regardless of their heights and vision, all can see clearly and briefly.
4. High-resolution digital camera – image focusing vivid and clear.
5. Infrared Night-Vision – under the environment of insufficient outdoor lighting, the device automatically activates the infrared Night-Vision, the indoor host machine can clearly display or record the outdoor scenes.
6. Option of various ringings – users can select the desired doorbells freely
7. Support extended IF memory – up to 32G extendable, photo/video is stored in T-flash storage card.
8. Support GSM / GPRS / SMS / MMS function. For this functions – needs SIM card.
9. Usable at any time – active connection is adopted for indoor set, it can be removed at any time for photo and video view, play, download or deletion without the need of being detached.
10. Simple and convenient to install – can directly replace the peephole or doorbell; user can carry out quick installation, without the need of amending the peephole or destructing the door body.
11. Super long standby –High capacity rechargeable lithium batteries are provided, adopting intelligent energy-saving technology, fully charged batteries provide up to 10 days of runtime.
12. Charge-and-record supportable – without the need to worry that the operation will be affected due to depletion of electrical quantity.
13. Auto circulating memory – without the need to worry that real-time recording is unachievable due to insufficient space of storage card.
14. USB data charging wire – charge, downloading or uploading audio-visual materials can be realized through the USB interface.
15. Multifunction holder – used for track junction and as support & protective sleeve of host machine.

2. Performance parameters:

Serial no.	Specifications	Technical parameters
1	Power source	li-ion battery: 2100 mA
2	Camera	2,000,000 pixels, high-resolution camera
3	Display device	LCD 5" resolution
4	Sound format	Ringling
5	Memory device	TF card (up to 32G supportable)
6	Shooting mode	Manual and automatic video-recording
7	Current in "hold" mode	Less than 1mA
8	Stand-by time	>200 hours
9	Charge time	3 hours
10	Dimmension – outdoor unit	136 x 71 x 12 mm
11	Dimmension – indoor unit	61 x 61 x 15,5 mm
12	Hole of door	12 - 30 mm
13	Thickness of door	30 - 100 mm
14	Environmental temperature	0°C +40°C

Product diagram

Key introduction:

A. indoor host machine keystrokes (5 pcs)

1. **ON / OFF key:** switching on and shutting down the machine and their confirmation
2. **OK. key:** confirmation of function
3. **LEFT / RIGHT keys:** choice of function
4. **RESET key:** to reset of device use this key when the system crashed

B. Keystrokes on outdoor machine

Outdoor doorbell key: press down this key, the doorbell will ring and record video automatically

Basic structure

1. Host Unit



iSmartEye host unit is capacitive touch screen, the menu structure and operation is similar to the normal smart phone, It's the core of iSmartEye. It has four physical buttons, functions are as follows:

- Power switch: Long press to switch on/off
- Home button: Exit, Return to the standby screen.
- Volume + : Increase the volume
- Volume - : Decrease the volume

2. Extension Unit

Extension Unit is like an interphone which is composed of doorbell, camera, infrared sensor, microphone and speaker. It is installed on the outside of your door. It can detect visitors through infrared sensor and record video and audio through the invisible camera. Meanwhile, visitors can also ring the doorbell to inform homeowners.



3. SIM Card



SIM card can be inserted into the host to achieve some phone functions, such as SMS, call, etc.

SIM card supports 850/1900 and 900/1800, no supports CMDD.

SIM card install

- Turn off the host.
- SIM card into card slot
- Please turn off the host before take out the SIM card.

In order to avoid information loss and damage in SIM card, you should avoid touching the metal contacts and keep the SIM card placed away from electrical, magnetic place

ATTENTION:

- **SIM card is small objects, do not allow children access to the SIM card, to avoid children mistakenly swallowing**
- **If can not read the SIM card, remove the SIM card after turn off, check the correct insert path to install the SIM card again.**
- **If display SIM card is damaged, plz contact SIM card net work operator**
- **If display SIM card is permanently locked, plz contact SIM card net work operator**

4. T-Flash card (micro SD)

Host support memory card, you can extend the memory storage through built a TF card. You can install TF card when the host working.

- Insert the storage card in the way as shown in the diagram until you hear a clicking sound
- Improper insertion of storage card may cause system failure, please determine the inserting direction of the card.
- Take out of the storage card – push in the storage card until you hear a clicking sound, then the storage card will pop up

5. Battery

Please fully use up and then fully charge at the first three charge so that the battery is easy to achieve the best using state.

iSmartEye uses USB charge, located at the right bottom of the host. After inserting the charger, battery strength icon in the top right of the screen began to roll, said it is charging when the battery icon is full, and no longer the scroll, which means that the charge has been completed. When the battery power is low, the host will have low battery alarm, sending SMS to your mobile; when the power runs out, the host will automatically turn off.

6. Battery Installation

- Parallel move the battery cover downward, and take it off.
- Insert the lithium battery along the battery jar and set it level, mind the front and reverse side of the battery.
- Fit on the battery cover.

Basic functions

1. Camera



The host can check the outdoor status and the visitors' appearance from the camera.

With preview list, photo taking directly by touching the middle easy found icon, then touching "Option" icon to enter camera setting which can adjust the zoom "+/-", color balance, photo quality, brightness, etc effects.

The host can also change it to the video mode to take a video, reset the camera's storage location if T card inserted.

a. Album

This icon is convenient for users to view mobile and memory card's photos and images.

Pressing "Option" to the following operation steps with Album list:

- View: Viewing the selected enlarged photo.
- Send: Sending the photo to others by MMS.
- Rename: Renaming the selected photo.
- Delete: Deleting the selected photo
- Delete All file: Deleting All selected photo files.
- Sort by: Sorting the photos according to different types.
- Photo Details



b. Video

It is convenient for users to view HOST and memory card's Videos.

Pressing "Option" to the following operation steps with Video list:

- Play: Playing the selected video file
- Send: Sending the video to others by MMS.
- Rename: Renaming the selected video.
- Delete: Deleting the selected video
- Delete All: Deleting All selected video files.
- Sort: Sorting the videos according to different types.

2. Mode Selection

a. Home Mode

Without ring the Doorbell

- Infrared sensor 10 seconds photo taking (time and ON/OFF can be set)
- "If you have something plz ring the doorbell, nothing please leave, thank you" reminding (time and voice can be set)
- Alarming (time and ON/OFF can be set)

Ring the doorbell

- Pressing doorbell by visitors
- With doorbell sound (doorbell ring can be customized)
- Photo Taking

b. Outdoor Mode

Without ring the Doorbell

- Infrared sensor 10 seconds photo taking (time and ON/OFF can be set)
- "If you have something plz ring the doorbell, nothing please leave, thank you" reminding (time and voice can be set)
- Alarming (time and ON/OFF can be set)
- Sending SMS/MMS/Email to the number set by host
- Replying "y" from the set number's SMS received
- iSmart Eye send the MMS to set number
- Setting call back function from the set number to talk with visitors directly with iSmartEye automatic answer function.

Pressing Doorbell

- Pressing Doorbell
- Photo Taking
- Voice reminding "Hello, I am not at home , if you want to leave a message please ring the bell after do, if you have urgent things please long press the doorbell call me, thank you."



3. File Management



Managing the files for Host and TF card, formatting storage disk.

Pressing "Option" to the following operation:

- Open: Unfolding the folder's sub list.
- New Folder: Adding New Folder from the selected Folder.
- Rename: Renaming the selected folder.
- Delete: Deleting the selected file or folder.
- Sort by: Sorting the folders according to "Name", "Time", "Pixel" or "Type"

4. Phone Number and Email Add



a. Phone Number



Contacts List

10 contact numbers can be set as VIP contacts. Activating one of the contacts as main contact, visitors can make phone call with the contacts through iSmartEye.

Remotely add users

The VIP contacts can send new phone number to iSmartEye and make it to be saved as the VIP contacts automatically. Previous saved number will be covered by the new one when the list is full. (total 10 number)

Remote to change users

You can change the main contact by sending the number of other VIP contacts by SMS to iSmartEye

The iSmartEye will send SMS/MMS/Email to the main contact automatically and remind someone is outside if the motion sensor detects people is in front of your door.

b. Email ADD

Pre-saving 10 email Adds, selecting and confirming one as the main ADD.

The iSmartEye will send email to the main ADD automatically and remind someone is outside if the motion sensor detects people is in front of your door.

Sending a new email add to the iSmartEye which will be regarded as pre-saved email automatically; previous saved email will be covered by the new one when set email numbers full.

5. Sensor



a. Sensor Setting

Turning ON/OFF the Sensor, the Sensor warning signal, alarm time and SMS sent or not, then setting the taking photo time by infrared sensor (default 10 seconds).

b. Video Information

Visitors video recording time setting(default 20 seconds)

c. Ring Setting

Multiple voice prompt can be chosen. And it is can also be customized by user themselves.

d. Communication methods

SMS, MMS and Email can be set by users for the iSmartEye

You can also switch the methods with your mobile.

Sending "NO SMS" to cancel the SMS; sending "SMS" to add

Sending "NO MMS" to cancel the MMS; sending "MMS" to add

Sending "NO Email" to cancel the Email; sending "Email" to add

e. Sound record

Entering Recording list, many lists can be chosen from by "Option"

- New Record: Adding New Recording
- List: list of recording

Options:

- Play: Playing the selected recording file
- Rename: Renaming the selected file
- Delete: Deleting the selected file
- Delete All: Deleting all selected file
- Send: Forwarding to others by MMS or Email
- Setting: Selecting storage location and audio quality

6. Setting



- Mobile Setting: Adjusting Time and Date, ON/OFF time, language choosing, flight mode setting, LCD adjusting, etc
- Telephone Mode ON/OFF: Setting telephone and doorbell mode Standby setting: Setting Screen saver, ON/OFF pictures and show date and time
- Network setting: Network selection and preference setting
- Safety setting: In case of mobile and SIM card illegal use —SIM(PIN code): For SIM card safety, PUK code is needed to unlock if wrong PIN code three times inputting, more details please contact network operator.
- Mobile Lock: For Mobile's safety, mobile's unlock initial password is :1234
- Restore setting: Be careful for this setting and initial password is :1234 when the HOST is on original status

Remark: Telephone mode Host can be used as mobile when you are at home

7. Calendar and Schedule

Entering Calendar list

Pressing "Option" to the following operation steps:

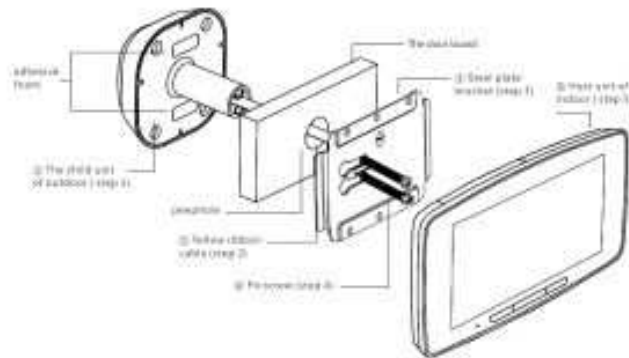
View: viewing the current date to check the reminding schedule.

- View all: Checking all reminding schedules.
- Adding event: Adding a schedule reminding, the current date shown with system setting.
- Deleting event: Deleting the current reminding schedule.
- Jump to Date: Checking calendar information with the inputting date. Week/Month shown: Setting the calendar mode.



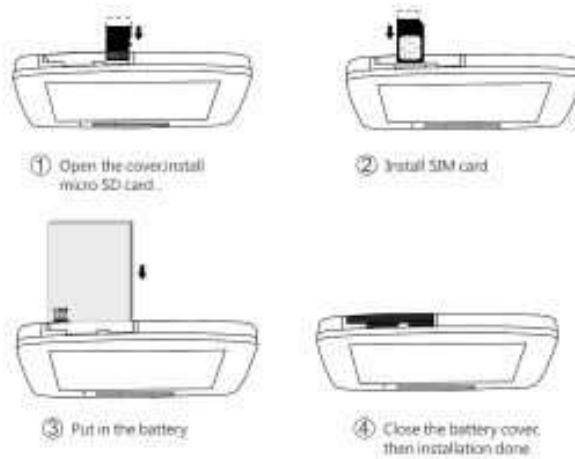
Installation guide

Easy installation illustrations

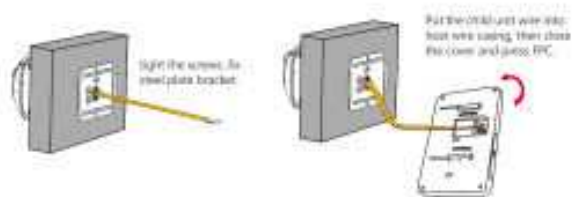


Installation details

1 Installation Instruction



2 Fix the child unit, connect it with the host machine



Fix the child unit, connect to the host.



Attentions during Installation

- The outdoor photosensitive sensor should not be hidden or blocked by other objects.
- Do not stick label on the speaker, otherwise the sound effect of doorbell will be affected.
- Install the flexible connection carefully, and do not pull with force to avoid it being cut by sharp metal objects.
- Do not dismantle the doorbell frequently to prevent damage of flexible connection.
- Insert the host machine in or take it out of the host machine holder only under the closure state, otherwise, loss of data may be caused.

Configuration

Manual	1 piece
Outdoor unit	1 piece
Indoor monitor	1 piece
Holder of host machine	1 piece
USB data line	1 piece
Lithium battery	1 piece
Screw	

General failures and solution

Fault	Reason(s)	Solution
<i>Can not start up.</i>	<i>Neglected to insert battery.</i>	<i>Insert battery.</i>
	<i>The battery is dead.</i>	<i>Replace battery.</i>
		<i>Charge the battery.</i>
<i>Bell rings without image.</i>	<i>Wire is not firmly fixed.</i>	<i>Check up wire or reconnect.</i>
	<i>The indoor monitor doesn't stick right in the holder.</i>	<i>Fix the monitor correctly.</i>
<i>No record.</i>	<i>No TF card.</i>	<i>Insert TF card.</i>
<i>Display: card is full, can not circularly record.</i>	<i>Bad file exists.</i>	<i>Delete the bad file.</i>
		<i>Format.</i>
<i>Can not connect to computer to download.</i>	<i>Computer can not automatically recognize.</i>	<i>Connect to computer by USB wire, press "OK" to start up, the system shall check automatically.</i>
<i>Indoor monitor crashes, no reaction when operation.</i>	<i>Non standard operation(Power interruption during recording, or monitor breaks away from holder.).</i>	<i>Press "Reset", or re-insert battery(Note: the time and date shall be reset.)</i>

Remark: Most of failures could be resolved by formatting and resetting, if not, please contact local distributors.

Producer: YUODO LIMITED Hong Kong  www.ismarteye.com	Importer: Przedsiębiorstwo Handlowo Usługowe FENIKS ul. Słoneczna 110, Nowa Kuźnica, 42-350 Koziegłowy Poland www.elmic.pl , elmic@elmic.pl 
---	---