

# Crocodillo Hand Dryer

## User Manual





Do not open the front panel once installed.



Do not allow the unit to get excessively wet.



Do not modify and disassemble the unit unnecessarily.



Do not allow children to hang from the unit.



Use a single-phase AC 220v - 240v/50Hz power supply.

Use a separate electrical spur.

Turn off the power switch before inspecting and cleaning the unit.

Ensure the unit is properly grounded / earthed.

Installation work should be carried out by a qualified electrician.

Be sure to install a residual current circuit break (RCD)

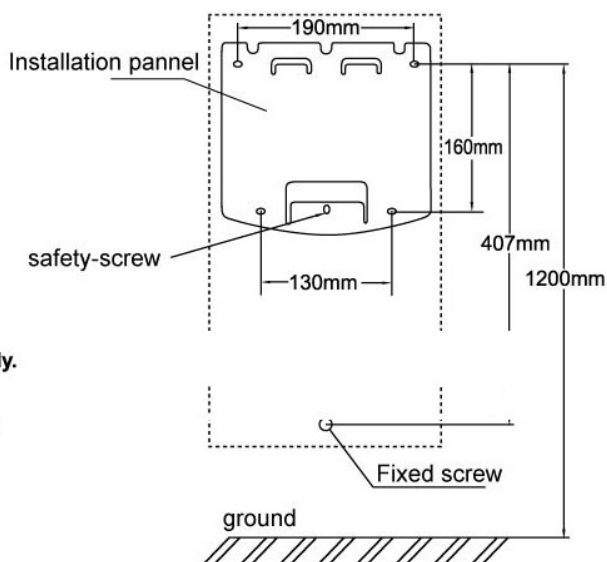
Do not use in the following places:

- Where the ambient temperature is below -10°C or above 40°C.
- Where the unit may come into direct contact with water.
- Where the unit is under direct or strong sunlight.
- Where condensation may form within the unit.

# Installation

■ **Do not install in the following types of location, otherwise this may cause malfunction:**

- Locations where the temperature can exceed -10 °C or 40 °C.
- Locations where the unit may come into direct contact with water.
- Locations where the unit is under direct or strong sunlight
- Locations where there is a lot of condensation.
- Locations where corrosive, neutral, or reductive gases are present.
- Places lower than 0m or higher than 2000m above sea level



■ **Use a single-phase alternating current 220-240V power supply.**

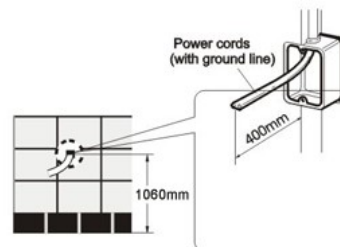
■ **Use a power cord which is between 1.5-2 mm<sup>2</sup> thick.  
(Cords other than 1.5-2 mm<sup>2</sup> single-core cords cannot be used.)**

(A drop in voltage is possible if the power cord exceeds 11 m in length, so we recommend using a 2.5mm<sup>2</sup> cord.)

**1**

**Wire the unit.**

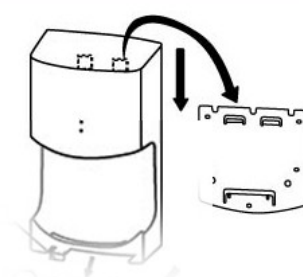
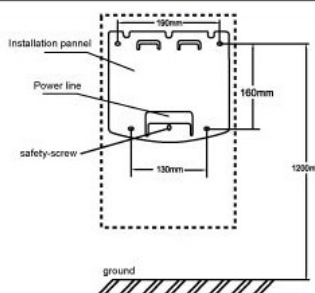
- Ideally embed the spur in the installation location and wire the power cord
- If no spur is used, the power cord may be distended and prevent the unit from being installed firmly against the wall.



**2**

**Attach the installation panel to the wall using the 4 installation screws.**

- If the wall is masonry use commercially available metal screw plugs (curl plugs, etc.).
- If the wall is not masonry reinforce it before installation.



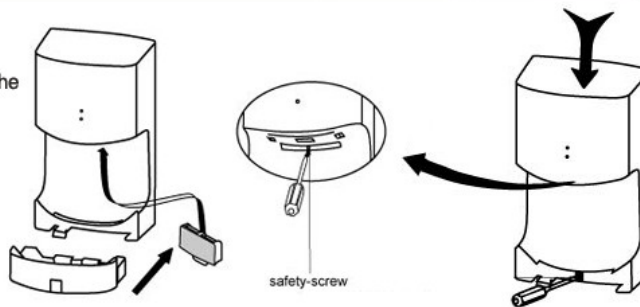
**3**

**Fasten the hand dryer**

Remove the filter pack, locate and push down the unit on to the installation panel.

Fasten the safety screw.

Re-insert the filter.



# Maintenance

## Cleaning the Unit body Before it gets obviously dirty

- Clean unit with a soft cloth.  
If unit gets very dirty, clean with a soft cloth dampened with neutral agent, then clean with a dry soft cloth.
- Remove the dirt from the sensor. (This will prevent malfunctions)



Note

- Only use neutral cleaning products.
- Do not use thinners, acidic or alkaline toilet cleaners, or nylon brush.
- If chemical cloths used, please read their instructions first.
- Disinfectants or alcohol based cleaning agents may damage your Crocodillo hand dryer.

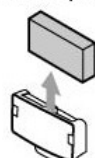


## WARNING

- Before you clean the unit, turn off the power

- Remove the filter pack.

- Remove the filter from the pack.



- Remove dust & dirt from filter.



- Do not wash the filter.



## Specification

<b>Power</b>	<b>AC220V - 240V</b>
<b>Frequency</b>	<b>50HZ</b>
<b>Drying Time</b>	<b>10-15s</b>
<b>Wind Speed</b>	<b>100M/S</b>
<b>Power</b>	<b>1400W</b>
<b>Motor</b>	<b>Brush motor</b>
<b>Sensing Distance</b>	<b>12+3cm</b>
<b>Dimensions</b>	<b>250X166X470mm</b>
<b>Gross Weight</b>	<b>4.5KG</b>