

*Sense*

**CHECK LIST OF ITEMS INBOX:**

- I. FAUCET BODY:— 1 PIECE.
- II. CONTROL BOX UNIT:— 1 PIECE.
- III. WATER HOSE G 1/2":— 2 PIECE.
- IV. AA SIZE 1.5 V BATTERY:— 4 PIECE.
- V. S.S. SCREWS:— 4 PIECE.
- VI. WALL PLUG:— 4 PIECE.

THIS PRODUCT IS FOR SELLING. INSTALLATION IS NOT THE LIABILITY OF THE COMPANY.



SI-C-6VAC/DC-1001

CUSTOMER CARE NO: +91-8146889940

E-MAIL: [supportsi@gmail.com](mailto:supportsi@gmail.com)

MANUFACTURED BY:

SAMBI INDUSTRIES E-33, PHASE-7, INDUSTRIAL AREA MOHALI,  
SAHIBZADA AJIT SINGH NAGAR, PUNJAB, INDIA-160055.

*Sense*

**Automatic Faucet: User's Manual**



SI-C-6VAC/DC-1001

**CONTENTS:**

FEATURES	1
TECHNICAL DETAILS	2
INSTALLATION DIAGRAM	3
INSTALLATION PROCEDURE	4
AUTOMATIC FAUCET WORKING	5
SAFETY PRECATIONS	6
MAINTENANCE	7
TROUBLE-SHOOTING	8
WARRANTY	9, 10

*Add sense to your style.*

*The user's manual is for common use.*

**FEATURES:**

1. TOUCH FREE INFRARED SENSOR BASIN FAUCET.
2. SAVES ABOUT 70% TO 80% OF PRECIOUS WATER.
3. SAVES MONEY BY DROPPING WATER BILLS.
4. CLEAN HYGIENIC USE.
5. HINDER THE GROWTH OF BACTERIA, GERMS AND INFECTIONS.
6. SENSOR TECHNOLOGY PREVENTS OVERFLOW OF WATER.
7. DUAL POWERED MAINS OPERATED.
8. IN CASE OF POWER SHUTDOWN, DEVICE POWER AUTOMATICALLY SWITCHES TO 6V BATTERY INSTALLED.
9. OPERATING VOLTAGE: 6V DC.
10. VERY LOW CURRENT USAGE.
11. SAVES WATER & PREVENT FAKE SENSING BY AUTO SWITCH OFF IN 60 SEC.
12. HOT AND COLD PREMIX VALVE (BY MODEL TYPE).
13. POWER LED INDICATOR.
14. LEAK PROOF SOLID BRASS BODY DESIGN.
15. SOFT AND SOOTHING WATER FLOW.
16. DUAL FILTER TO HOLD MICRO PHYSICAL IMPURITIES.
17. TOUGH CHROME FINISH (BY MODEL TYPE).
18. 24 CARET GOLD POLISH (BY MODEL TYPE).
19. EASY TO CLEAN AND MAINTAIN.
20. IDEAL FOR HOTELS, RESTAURANTS, GUEST HOUSE, PUBLIC PLACES, MALLS, HOSPITALS, MULTIPLEXES, CITY CENTRES, KITCHENS, FACTORIES, AIRPORTS, RAILWAY STATIONS, BUS STATIONS, TEMPLES, COLLEGES, INSTITUTES AND ETC.....

IF THE ERROR REMAINS UNSOLVED THEN REGISTER YOU COMPLAINT TO THE CUSTOMER CARE/DIRECT TO THE COMPANY OFFICE BEFORE USING WARRANTY BENEFITS.

SHIPMENT AND HANDLING DAMAGES.

**WARRANTY CLAIM:**

DEFECTIVE PRODUCT/PART SHOULD BE DISPATCHED WITHIN 30 DAYS AFTER THE PRODUCT IS RECEIVED BY THE CUSTOMER. SHIPPING/FREIGHT IS TO BE PREPAID BY THE CUSTOMERS. COMPANY WILL NOT BE LIABLE TO PAY ANY DUTIES AND TAXES WHILE CLAIMING THE WARRANTY.

THE PRODUCT/PART SHOULD BE PROPERLY AND SAFELY PACKED. BARRIER/CUSTOMS DECLARATION FORM: RETURNING TO MANUFACTURER FOR WARRANTY SERVICE SHOULD BE MENTIONED, ALONG WITH THE INVOICE NO. AND DATE OF INVOICE. A PHOTOCOPY OF THE ORIGINAL BILL SHOULD BE ATTACHED FOR DETAILED REFERENCE TO THE AUTHORITIES.

THE PRODUCT/PART SEND BY YOU WILL BE TESTED AND THEN REPLACED/REPAIRED AS NECESSARY WITHIN THE WARRANTY. THE PRODUCT WILL BE THEN RETESTED AND SEND TO YOU ALONG WITH THE FEEDBACK FORM.

NOW, THE PRESENT SHIPPING/FREIGHT WILL BE PAID BY THE COMPANY TO YOUR PREVIOUS INVOICED DESTINATION ONLY.

**WARRANTY LIMITATIONS:**

WARRANTY BENEFITS WILL APPLY ONLY TO THE ORIGINAL PURCHASER OF THE PRODUCT, AS MENTIONED ON THE INVOICE.

THE PRODUCT WILL NOT BE REFUNDED OR REPLACED WITH OTHER MODEL OF ANY CATEGORY.

THE COMPANY MAKES ITSELF LIABLE TO ANY DEFECTIVE PRODUCT WITHIN WARRANTY PERIOD AND ALSO, FOR THE REPAIR/ REPLACEMENT OF PRODUCTS FOUND DEFECTIVE AS PER THE WARRANTY CONDITIONS.

IN NO EVENT SHALL THE COMPANY BE LIABLE FOR INDIRECT, INCIDENTAL, PUNITIVE, SPECIAL OR CONSEQUENTIAL DAMAGES OF ANY TYPE.

**CONSUMER LAW:**

THE ABOVE WARRANTY IS PRESENTED IN ENGLISH LANGUAGE. ANY TYPE OF DISPUTE THAT MAY ARISE FROM THE TERMS AND CONDITIONS OF THE WARRANTY SHALL BE GOVERNED BY THE LAWS OF INDIAN CONSUMER FORUM. THE COMPANY WILL PARTICIPATE IN ANY LAWSUIT FILED IN THE COURTS PRESENT WITHIN THE STATE OF PUNJAB JURISDICTION, INDIA .

**WARRANTY:**

THE COMPANY SAMBI INDUSTRIES PROVIDES MANUFACTURER'S WARRANTY FOR THE PERIOD OF 12 MONTHS ON THE WHOLE PRODUCT AS A SET. THE COMPANY ASSURES THE QUALITY OF ALL ITS PRODUCTS AND THE METHOD IN WHICH THE PRODUCTS WERE MADE ALONG WITH THE MATERIALS USED TO MANUFACTURE THEM ARE FREE FROM ANY DEFECTS. **THE INSTALLATION CHARGES ARE NOT INCLUDED IN THE PRICING.** THE COST OF WARRANTY IS NOT INCLUDED IN THE PRODUCT PRICING. ANY TYPE OF MANUFACTURING DEFECT FOUND IS A DIRECT LOSS TO THE COMPANY.

**WARRANTY COVER:**

1. ANY MANUFACTURING DEFECT.
2. HARDWARE COMPONENT FAILURE.
3. ELECTRONIC COMPONENT FAILURE.
4. FAILURE OF ANY ACCESSORIES PROVIDED.

FAILURE: TERM FAILURE REFERS TO THE FUNCTION FAILURE DURING WARRANTY PERIOD. IT DOES NOT COVER ANY MISUSE AND ABUSE TO THE PRODUCT.

**WARRANTY ACTION PLAN:**

IN CASE OF ANY APPLICATION DEFECT AND MANUFACTURING DEFECT FOUND IN ANY COMPONENT WITHIN THE WARRANTY PERIOD, THE PARTICULAR PRODUCT/PART WOULD BE REPAIRED/REPLACED. REPLACEMENT PARTS MAY INCLUDE NEW/REFURBISHED TESTED PARTS AND WILL NOT EXTEND THE ORIGINAL WARRANTY PERIOD FOR ANY NEW/REFURBISHED PARTS.

**WARRANTY DOES NOT COVER:**

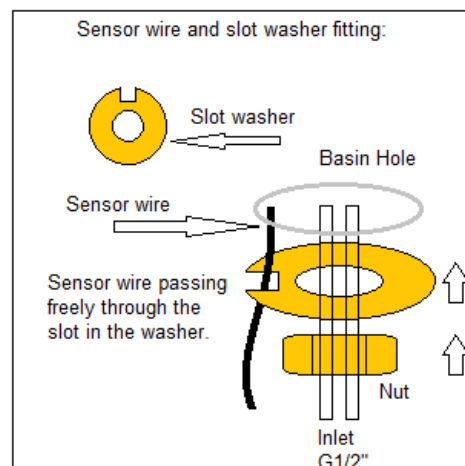
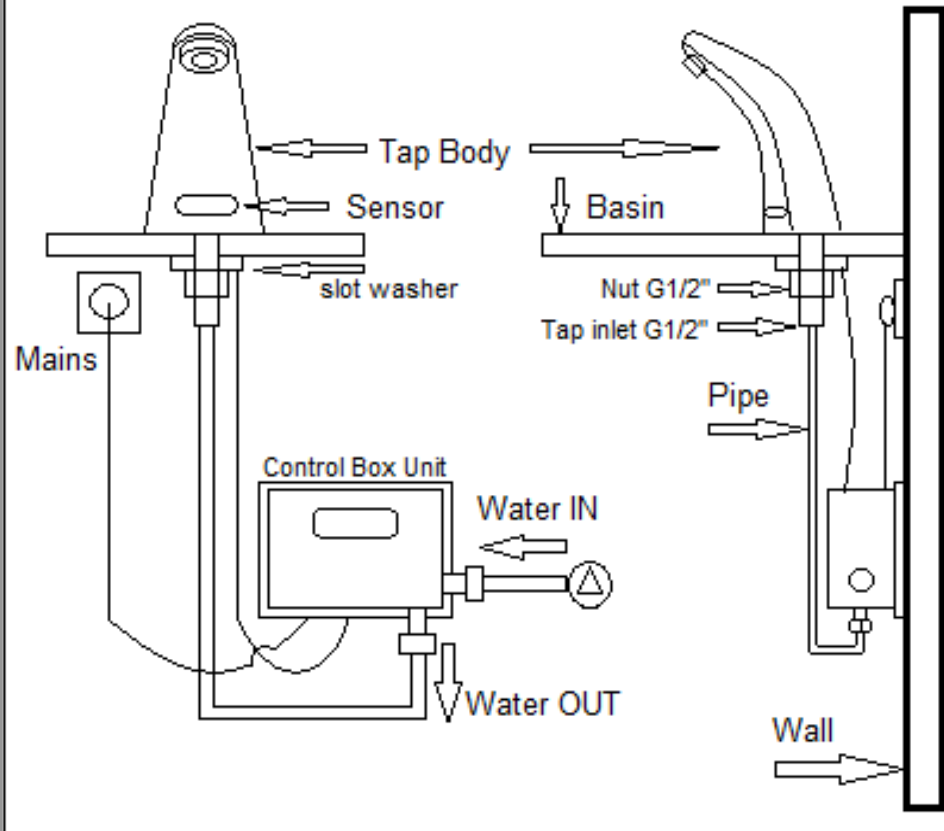
- ANY NATURAL HAPPENING.
- PROBLEMS RELATING TO VERY HIGH AND LOW TEMPERATURES.
- ANY MISUSE, NEGLIGENCE, ABUSE AND WRONG APPLICATION OF THE PRODUCT.
- PROBLEMS NOT RELATING TO MANUFACTURING DEFECTS.
- PROBLEMS NOT IN RELATION TO HARDWARE/ELECTRONIC PRODUCT FAILURE.
- PROBLEM CAUSED DUE TO IMPROPER INSTALLATION AND SERVICING FAILURE.

PRODUCT/PART SEND FOR THE WARRANTY CLAIM WILL BE TESTED AND IF FOUND OK, WILL NOT BE PROVIDED ANY WARRANTY BENEFITS FOR THE SAME. IN SUCH A CASE DOWN AND UP SHIPPING CHARGES WILL BE PAID BY THE CUSTOMER. IT'S RECOMMENDED TO TROUBLESHOOT FIRST.

**TECHNICAL DETAILS:**

- \* PRESSURE RANGE OF 0.5 KG/CM<sup>2</sup> TO 6.0 KG/CM<sup>2</sup> FOR WORKING OF SENSOR TAP (ABOUT 0.5—6.0 BARS).
- \* INPUT POWER BY MAINS 220V AC- 240V AC TO THE TRANSFORMER.
- \* TRANSFORMER WORKING CAPACITY OUTPUT .6V DC.
- \* SOLENOID VALVE OPERATING VOLTAGE 6V DC.
- \* AMBIENT TEMPERATURE RANGE (0.1- 55) DEG C.
- \* IR SENSOR OPERATING VOLTAGE 6V DC.
- \* INLET PIPE G 1/2" BSP BOTH ENDS.
- \* OUTLET PIPE G 1/2" BSP BOTH ENDS.
- \* SOLENOID VALVE BOTH ENDS 1/2" BSP.
- \* AA SIZE 4 BATTERIES 1.5 V EACH (1.5x4=6V DC).

## INSTALLATION DIAGRAM



## TROUBLE SHOOTING:

**Leaks:** If there is any leak in the water flow, check the leak point — Unthread the socket — check the rubber washer— refit/replace the rubber washer. If not ok then replace the entire pipe set.

**Sensor malfunction:** If the sensor fails to read an object/hand in front of it just take the batteries out and switch the power to off. Wait for 10 sec and switch it on. If the problem is unsolved switch the power off— unplug the sensor cable and reinsert it — switch the power on.  
 Note: close the water flow from the inlet every time power is switched off and open it as power is on.

**Low flow:** Check the inline pressure, it should not be less than 1/2 bars(0.5kg/cm<sup>2</sup>). If pressure is ok then open the form flow at outlet point with the plastic key provided — clean its filter/replace new filter and refit it properly matching the threads.

**Water flow continues or Water doesn't flow:** Shut the power of and on in 10 sec intervals. Also, put your hand forward towards sensor and then outwards away from the sensor.

**Power failure:** Check the plug is properly inserted or not. If the LED light is dim then replace the batteries.

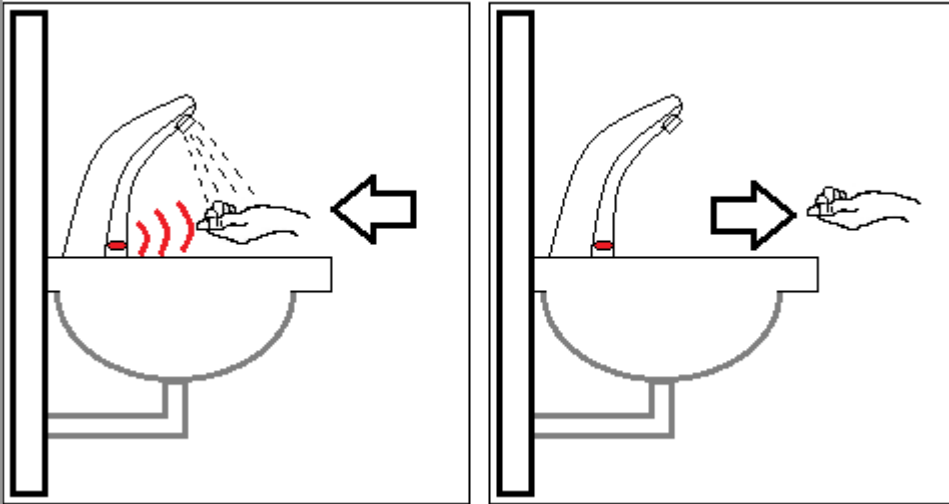
**MAINTAINANCE:**

1. Changing batteries: Use AA size 1.5 V batteries. If the LED display in Sensor eye is dim then replace the old batteries with a set of four new batteries. Match the (+) and (-) terminals of the batteries with the battery box while installing new batteries. If flux exist on either terminal, do clean it with some sharp tool or sand paper, antirust reagents can be used.
2. Cleaning tap body: Never use acids, strong alkaline and chemicals to clean the tap surface. Use a soft damp towel soaked in soap solution to wipe out stains and then dry it out with a soft cloth/tissue. For extra shine use a general wax polish on surface. Always rub and clean the surface gently. Never rub the surface violently this can scratch the surface.
3. Cleaning the tap outlet/form flow: Your tap is provided with a form flow outlet, to have smooth and soft flow. As the water in line may have micro and macro contamitions, clean the tap outlet monthly. To open the form flow use a round plastic key provided.
4. Cleaning the sensor: Clean the sensor face with a sort dry cloth. Do not rock it. Do not press the sensor.
5. Checking leak: In case there is a leak in the line anywhere just close the feeder and open the joint. Take out the rubber washer clean the socket and nut and replace it with new washer.

**INSTALLATION PROCEDURE:**

1. The sensor tap is an assembly of sensor tap body and control box unit.
2. Mount the tap on the basin (basin hole range min 25mm– max 35mm), insert the slot washer from below and fasten these with the nut provided. (Note: The sensor wire cable should pass from the provided slot in the slot washer). The sensor wire should not be pressed by any means. Diagram:
3. Once the tap is fixed on basin, choose an appropriate place below the basin on left or right near to the water inlet point. Also, the control box location should also be easily accessible to the tools and fittings.
4. Mark and drill the holes in the wall. Insert the wall plug provided and tighten the screws appropriately. While working at low height keep your head and body in safe position.
5. Now, fix the first water hose provided to the inlet point of the control box and then to the inlet water source.
6. Similarly, fix the second water hose provided to the outlet point of the control box and then the tap inlet point below the basin.
7. Use a wrench to tight the threaded components but do not apply excessive force to fasten the components.
8. Insert four 1.5V AA size batteries in the panel (1.5x4=6V). Use best quality batteries for longer life and proper consistent voltage supply.
9. After inserting the batteries check the sensor tap, the red power LED will blink when you bring your hand in front of it, open water flow and check the taps working.
10. Now, insert the power cord into the mains supply ranging from 220V AC– 240 V AC. An AC to DC transformer is provided within the control box unit. The mains supply should be away or protected from water contact. Can use sealants to protect the electrical contacts from water.
11. Clean the work area properly with a clean damp cloth, never use acids and chemicals on the tap surface and other components. To wipe out stains use lukewarm soap solution. Car polishing cream and rubbing cream can be used but not on sensor eye and gold plated faucet.

## AUTOMATIC FAUCET WORKING



### WORKING OF SENSOR TAP:

Sensor tap is a unique **water saving product**. It only release water flow when its initiated to do so. As the hand approaches to its linear range, an IR sensor detects it. Within 1-6 m sec a pulse is send by the sensor to the solenoid valve to open up and release water flow. Similarly, as the hand is out of its range the sensor sends the command to the solenoid valve to shut close and stop water flow immediately.

The sensor and the solenoid valve are powered by 6V DC transformer built in the control box unit. In case of power shutdown the batteries provide the backup. The complete unit works on extremely low power, equivalent to a baby toy. The range of sensor decreases as the intensity of light is increased, this is a regular phenomenon. If used and maintained properly our sensor taps can serve for a long working life.

### SAFETY PRECATIONS:

Please read this manual carefully before installing and using the sensor tap.

The tap should be installed in accordance with local and national wiring regulations.

A separate electrical supply and receptacle are required on a separately fused circuit. Use a circuit breaker.

Its recommended to use a electrical mains supply point below the basin or away from the basin to an electrical point. Properly insulate the wire and protect it from water.

Do not use hydrocarbon like, petrol chloroform, thinner etc to clean the tap as, these can damage the sensor eye surface.

Do not use sharp tools on taps surface.

Do not use acids and other chemical for cleaning purpose.

Do not push/hit the sensor eye.

Clean the form flow regularly with the key provided.

Keep your head protected and safe, while fitting the control box under the basin.

Do not open any water connection if hot water is running in line.

Close the main inlet manual valve before operating on the water connections to avoid spilling of water.