

KH 400 G QUIK-STAND



OPERATING, MAINTENANCE & CLEANING MANUAL



KEIM-013

INDEX

	PAGE
SPECIFICATIONS	2
SPARE PARTS	3
SAFETY PRECAUTIONS	4
OPERATING INSTRUCTIONS	5
BATTERY CARE AND CHARGING	6
MAINTENANCE, INSPECTION AND SERVICING INSTRUCTIONS	7
ASSEMBLY / DISASSEMBLY INSTRUCTIONS	8-9
CLEANING INSTRUCTIONS	9

SPECIFICATIONS

DIMENSIONS:

Length	1250mm
Width	730mm
Height	970mm (Boom down)
Effective lift range	730mm – 1560mm
Leg gating (inside)	515mm – 870mm
Leg gating (outside)	665mm – 1015mm
Lift reach	300mm (Boom down)
Base height	240mm
Clearance below base	40mm
Leg height from floor	160mm
Turning radius	1200mm

LIFT SPEED:

Slow	- 38mm per second
Fast	- 58mm per second

LIFT DRY WEIGHT:

43 Kg (with battery)

LIFT CAPACITY:

Max load - **150kg's**

CASTORS:

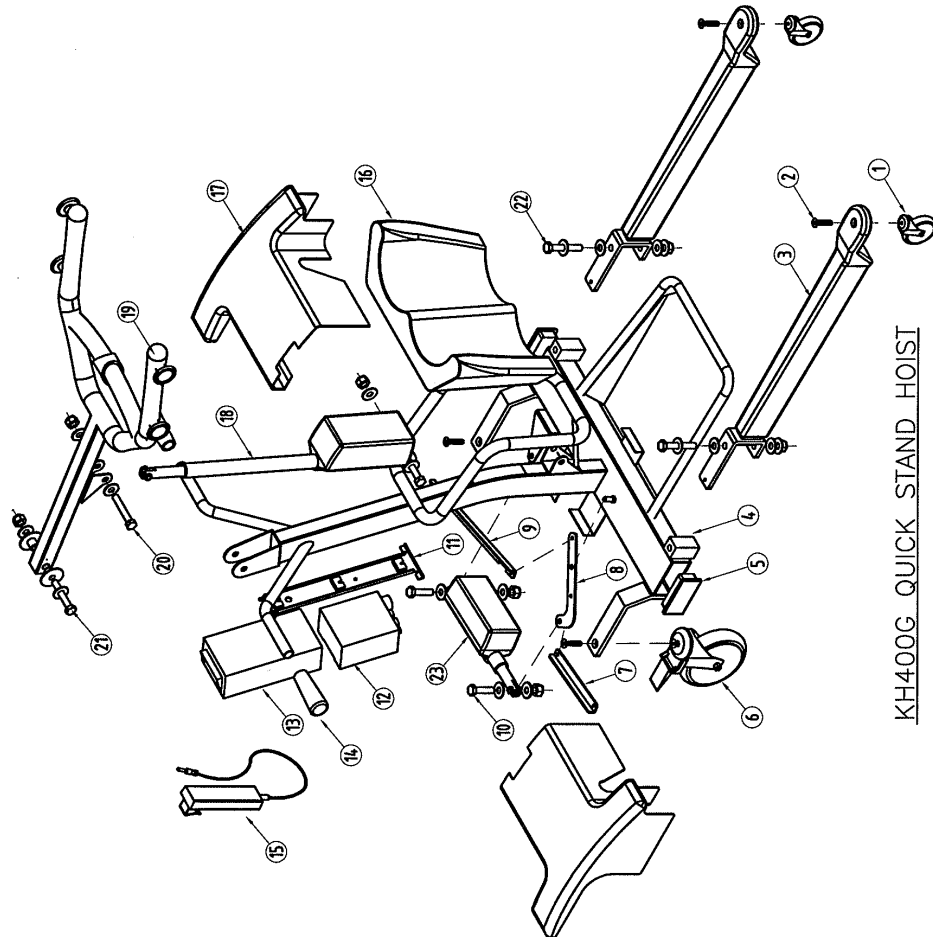
Ø150 Total lock rear polyurethane castor
Ø100 Swivel front polyurethane castor
Note: Smaller castors available on request.

FINISH:

Epoxy powder coated
Polyurethane legs and yoke
PVC cover
Vinyl kneepad

ELECTRICAL ITEMS:

Tested by Linak Australia to standards:-
AS 3108-1990
AS 3200.1-1990



KH400G QUICK STAND HOIST

ITEM	PART NUMBER	DESCRIPTION
1	3PUSB10M	Ø75 POLY SINGLE WHEEL SWIVEL
2	ZMCS711	CASTOR BOLT SET
3	400-1	LEG ASSEMBLY
4	KH 400G-03	BASE & MAST ASSEMBLY
5	P100X50	BASE END CAPS 100X50
6	5GTBB10M	Ø125 G/R T/LOCK BHM10
7	40TRS	SMALL TIE ROD
8	40LGL	LEG GATING LEVER
9	40TRL	LARGE TIE ROD
10	ZH710	GATING ACTUATOR BOLT SET
11	MBJ2	MOUNT BRACKET CONTROLLER AND BATTERY
12	CBJ2-00-00NA001010	CONTROLLER 2SPEED, EMERGENCY STOP
13	BAJ1-00-01	BATTERY 2SPEED
14	608PHG	PUSH HANDLE GRIPS
15	HB53J-00-01	HAND SET 2 SPEED, LEG GATING
16	UPH400	KNEE PAD
17	400GPC	PLASTIC BASE COVER
18	LA32JKSM-300-24	300mm LIFT ACTUATOR
19	PU40BH	BULL HORN ASSEMBLY
20	ZH816M	LIFT ACTUATOR BOLT SET
21	BB12-PVC	BULL HORN PIVOT BOLT SET
22	ZH820	LEG PIVOT BOLT SET
23	LA282S-060-24-001	LEG GATING ACTUATOR

SAFETY PRECAUTIONS.

For safety precautions only properly trained personal should use the hoist.

1. The KH 400 G Quik-Stand is manufactured and tested to handle a **MAXIMUM** safe working load of **150 Kg.**
2. The KH 400 G Quik-stand is manufactured and tested with safety and function for the carer and patients as the utmost importance. No parts should be removed from the hoist without approval this may create an unsafe working condition.
3. **EMERGENCY STOP:**
The KH 400 G QUIK-STAND is fitted with an emergency stop. This is the big red switch, located on the front of the controller. If there is a need to use this, simply depress the switch and it will automatically lock the position and cut all power to the electrical system. To disengage the emergency stop switch after it has been depressed, turn the red switch in a clockwise direction and the switch should return to its original position.
4. **EMERGENCY LOWERING AND RAISING.**
The emergency lowering/raising buttons can be used to lower/raise the lifter if there is an electrical or handset failure. The switches are located on the controller under the big red emergency stop switch. Simply press (using a ballpoint pen or similar object. DO NOT use a pin or compass) the button which you require. To halt the process, remove the pressure applied to the switch.
5. **LIFTING OF PATIENTS.**
For safety precautions only properly trained personal should use the lifter.
When connecting the sling to the patient, please ensure the fitting instructions are adhered too. (Located on the sling or in the sling instruction brochure).
6. Serial No., Model No., and Date of Manufacture are located on side of upright.
7. The hoist should not be used on rough or sloping surfaces. ie. Wheel chair ramps etc, and it is not recommended that the hoist be used outdoors.
8. **HOIST USAGE**
This hoist is designed only as an aid to assist in the standing of patients. Unless used in Conjunction with the seating sling in which case this is permissible for patient transfers, However only in a low position. For further instruction consult the sling brochure supplied With your sling(s).
9. While all care has been taken to eliminate all possible trap points on the hoist, there is potential for trapping your feet between the castors and legs, to avoid injury all personnel are to keep feet clear of this area during use.
10. On a daily basis before using the hoist, check over for any damage, cracking etc. and for loose parts. This is to ensure safety for the hoist operator and patient.

OPERATING INSTRUCTIONS

The KH 400 G Quik Stand is designed and manufactured with safety and function for both patient and carer as the utmost importance.

OPERATING INSTRUCTIONS:

1.1 INSTALLATION OF BATTERY PACK.

Before the QUIK-STAND can be operated the battery pack will need to be placed on charge (See 2.2 - in the "Battery charging and care" section - For Charging instructions). Minimum of 4 hours for flat battery. When the battery pack is fully charged, remove the battery from the charger and place on the lifter. Simply locate the battery on the mounting bracket and clip the release lever into the secure position. The Quick - Stand is now ready for use.



Fig 3

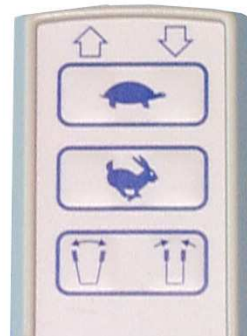


Fig 4

1.2 HANDSET:

1.2.1 RAISE/LOWER:

The QUIK-STAND operates via a touch pad hand controller. To raise or lower the lifter, simply press the required switch on the pad. (Fig 4)

There are four switches on the hand controller for raising and lowering.

The top two switches are for slow normal operation (Tortoise); the middle two switches are for faster operation (Hare).

1.2.2 LEG GATING:

To OPEN or CLOSE the "Gate" on the legs, simply press the touch pad hand controller with the required function. (Fig 4 shows the lower sets of switches are for the leg "gate"). Open on the left, Close on the right.

1.3 SLINGS AVAILABLE

1.3.1 KH400SF - PREMIUM STANDING SLING (Medium) with Velcro waist strap.

1.3.2 KH400SFB - PREMIUM STANDING SLING (Medium) with buckle waist strap.

1.3.3 KH400SS – SEATING SLING

These slings are used for patients that are up to 110 kg's.

1.3.4 KH400SL - PREMIUM STANDING SLING (Large) with Velcro waist strap.

1.3.5 KH400SLB - PREMIUM STANDING SLING (Large) with buckle waist strap.

These slings are used for patients that are between 100 - 150 kg's.

1.4 SLING FITTING INSTRUCTION

When using a seating sling for example, the front mounting points are used for the chest straps and the back for the leg straps. Please refer to the fitting instructions relevant to your choice of sling.



1.5 KNOB RECOMMENDED USAGE

When using the standing hoist there are two recommended mounting points relevant to patient size.

The front knobs are used for patients over 5'6" (165cm) and the back knobs are used for shorter patients ie: below 5'6" (165cm).



KNOB 1
FRONT

KNOB 2
BACK

BATTERY CHARGING AND CARE

1. MOUNTING OF THE CHARGING UNIT.

Kerry Equipment recommends that the charging unit be mounted on a wall out of the way of normal traffic, at approximately waist high, close to an electrical outlet. This will help in easy attachment and removal of the battery when charging is required.

For further instructions on charger mounting, please consult the charger mounting instructions supplied with the charging unit.

2. CHARGING

Before the KH 400 G can be operated the battery pack will need to be charged. Please follow the instructions below.

- 2.1 Plug the charger unit (Fig 10) into the 240-Volt supply outlet. The unit is now ready to accept a battery that requires charging; a **GREEN** L.E.D. (ON) will be displayed.
- 2.2 To charge the battery, simply locate the battery on the mount bracket and clip into position. (The **GREEN** and **ORANGE** L.E.D. on the front of the charger will be displayed). The battery is fully charged when the **ORANGE** L.E.D. is OFF and only the **GREEN** L.E.D. is displayed.
- 2.3 If a two-battery system is going to be used, replace the first battery once charged, with the second battery. Charge using the same procedure as above.

NOTE: A battery pack may remain on charge indefinitely without any detrimental effects to the battery or charging unit.



Fig 10 Charger unit shown without battery attached.

3. BATTERY CARE

The KH 400 G uses fully sealed lead acid batteries. Which are designed to be recharged on a regular basis. To care for your batteries and obtain the maximum life **DO NOT** allow the batteries to run totally flat before recharging.

The controller is fitted with an **audio low battery warning alarm**. When this warning alarm sounds complete the lift process, then change the battery and recharge. Kerry Equipment recommends that a 2-battery system be used; this allows one battery to always be on charge while the other is in use, and hence the hoist may never be out of service with a flat battery.

MAINTENANCE, INSPECTION AND SERVICING INSTRUCTIONS

The KH 400 G QUIK-STAND hoist requires servicing at a recommended period of 6 monthly intervals to ensure optimal operation at all times. If the hoist is subject to large amounts of use, then it is recommended to have the hoist dismantled by a qualified service personnel and inspected for signs of wear at 2-year periods. This is dependant on use.

In the unlikely event of fault or substantial wear contact your place of purchase or Kerry equipment directly.

LUBRICATION

The KH 400 G QUIK-STAND requires periodical lubrication. These points are:

1. CASTORS

It is always best practice to remove all hair and lint from the castors as soon as possible, always allowing free movement of all the wheels.

The castors need to be lubricated monthly (Use TAC-2 only). This involves: -

1.1 The Castor head bearing will need lubricating. Simply spray TAC-2 up into the bearing while rotating the castor (Fig 11).

1.2 The wheel also requires lubricating every month. To do this the wheel must be unbolted and removed from the castor frame. TAC-2 can then be sprayed into the hub centre to lubricate the internal bearings (Fig 12).



Fig 11



Fig 12

2. PIVOT POINTS

All pivot points will need to be lubricated with TAC-2 or similar lubricant. Simply spray for 2 seconds on each side of the recommended points monthly.

The hoist has to be turned onto its side for access to the following lubrication points. (To do this 2 people are required.)

Follow the instruction below:

2.0.1 Both people are to stand on one side of the lifter. One near the push handle, the other by the side of the lifter.

2.0.2 The person near the push handle locks the total lock castors.

2.0.3 In conjunction with one another pull the lifter towards the side, lowering the lifter onto its side on the floor.

You now have access to all the lubrication points. ie: pivot points, leg lever and leg pivot. Simply spray TAC-2 on all the pivot points for 2 seconds.

- 2.1 Leg Actuator Pivots (Fig 13)
- Leg Pivots (Fig 13)
- Tie Rod Pivot Points (Fig 13)

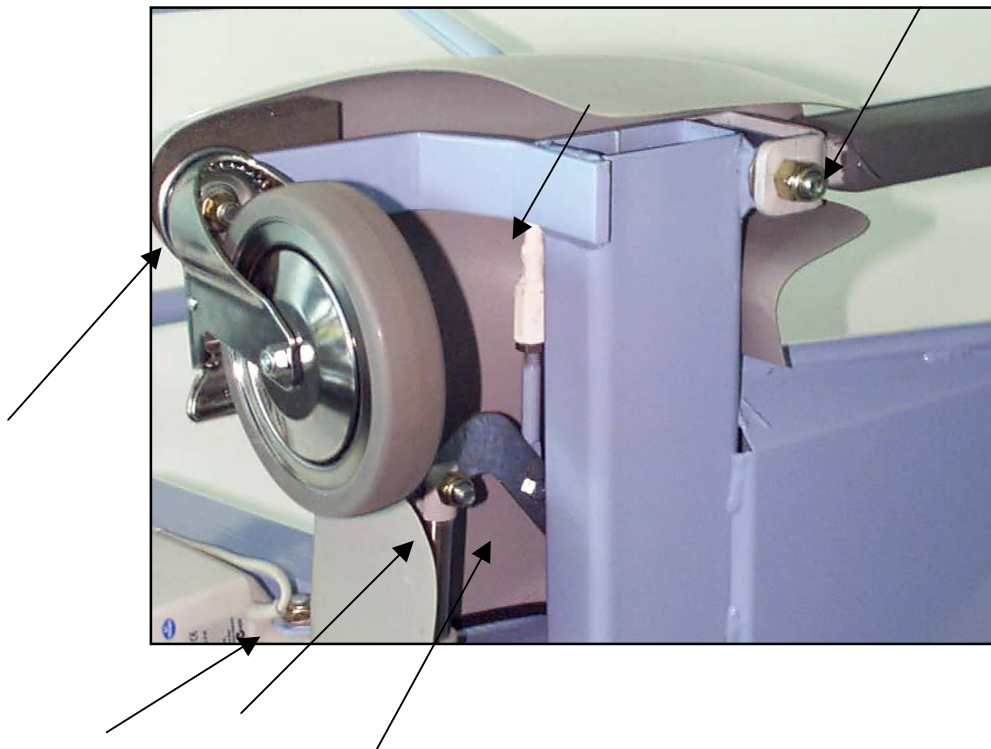


Fig 13

TAC-2 IS A CRC PRODUCT AND IS AVAILABLE FROM MOST AUTOMOTIVE OUTLETS OR THROUGH: - **KERRY EQUIPMENT** PH: (08) 9240 2944

ASSEMBLY / DISASSEMBLY INSTRUCTIONS

Kerry Equipment fully assembles their hoist prior to delivery. Kerry Equipment only recommends qualified service personal to work or service any of their hoists. Any assembly or disassembly should be checked with Kerry Equipment and or Distributor before commencing with any repair.

GENERAL CLEANING

1. The KH 400 G QUIK-STAND can be cleaned with a low strength detergent, warm water and a soft textured cloth. This includes all framework, PVC cover, strap and polyurethane legs.
2. SLING CARE

Protect from direct sunlight.
Repair any cuts or fraying immediately.
Please refer to the care instructions on your sling.
Slings are machine washable.
3. CAUTION

Do not immerse any lifter parts in water.
Do not allow water/cleaning liquid to enter the battery or controller.
Clean up spills immediately.

Supplied by:



Kerry Equipment (Aust) Pty Ltd

ABN 71 082 784 147

4 Halley Road
Balcatta, Perth
Australia 6021

Telephone +61 8 9240 2944
Facsimile +61 8 9240 1469
email@kerryequipment.com.au

www.kerryequipment.com.au

Manufactures of
Hospital & Nursing Home Equipment