

QBOX-200S Series

Standard / Extended Temperature Fanless BOX PC
with Intel® BayTrail SoC Processor, Atom™ E3825

User's Guide



Content

Content.....	2
Figures	3
Tables.....	4
Safety Instructions.....	5
<input type="checkbox"/> Before You Begin.....	5
<input type="checkbox"/> When Working Inside a Computer	6
<input type="checkbox"/> Preventing Electrostatic Discharge.....	7
<input type="checkbox"/> Instructions for Lithium Battery	8
Preface.....	9
<input type="checkbox"/> How to Use This Guide.....	9
<input type="checkbox"/> Unpacking.....	9
<input type="checkbox"/> Regulatory Compliance Statements	9
<input type="checkbox"/> Maintaining Your Computer	10
Chapter 1 Introduction	12
<input type="checkbox"/> Overview	12
<input type="checkbox"/> Product Specifications	13
<input type="checkbox"/> System Tour.....	14
Mechanical Dimensions	17
Chapter 2 Getting Started.....	18
<input type="checkbox"/> Setting up your PC	18
<input type="checkbox"/> Mounting your PC to a monitor	23
Chapter 3 AMI BIOS Setup.....	24
<input type="checkbox"/> Overview	24
<input type="checkbox"/> Main Menu.....	25
<input type="checkbox"/> Advanced Menu.....	27
<input type="checkbox"/> Boot Menu	35
<input type="checkbox"/> Security Menu.....	36
<input type="checkbox"/> Save & Exit Menu	36
Chapter 4 Driver Installation	38

Figures

Figure 1 Front Panel 14
Figure 2 Rear Panel..... 16
Figure 3 Mechanical Dimensions..... 17
Figure 4 VGA/ HDMI 18
Figure 5 Connect USB mouse & keyboard 19
Figure 6 RJ45 connector..... 20
Figure 7 Com ports 21
Figure 8 Turning on the system..... 22
Figure 9 VESA mounting (1) 23
Figure 10 VESA mounting (2) 23

Tables

Table 1 QBOX-200S Series Specification	13
Table 2 QBOX-200S BIOS Main Menu	25
Table 3 QBOX-200T BIOS Main Menu.....	26
Table 4 Advanced Menu.....	27
Table 5 Advanced Menu – Display Configuration.....	28
Table 6 Advanced Menu – Super IO Configuration	29
Table 7 Advanced Menu – Super IO Configuration – Serial Port 1 Configuration	29
Table 8 Advanced Menu –CPU Advanced Configuration	30
Table 9 Advanced Menu –SATA Configuration.....	30
Table 10 Advanced Menu –USB Configuration	31
Table 11 Advanced Menu –TPMConfiguration	32
Table 12 Advanced Menu –H/W Monitor.....	33
Table 13 Power Configuration.....	34
Table 14 Boot Menu	35
Table 15 Security Menu	36
Table 16 Save & Exit Menu.....	36

Safety Instructions

■ Before You Begin

Before handling the product, read the instructions and safety guidelines on the following pages to prevent damage to the product and to ensure your own personal safety. Refer to the “Advisories” section in the Preface for advisory conventions used in this user’s guide, including the distinction between Warnings, Cautions, Important Notes, and Notes.

- Always use caution when handling/operating a computer. Only qualified, experienced, authorized electronics service personnel should access the interior of a computer. The power supplies produce high voltages and energy hazards, which can cause bodily harm.
- Use extreme caution when installing or removing components. Refer to the installation instructions in this user’s guide for precautions and procedures. If you have any questions, please contact our Post-Sales Technical Support.
- Access can only be gained by service persons or by users who have been instructed about the reasons for the restrictions applied to the location and about any precautions that shall be taken; and access is through the use of a tool or lock and key, or other means of security, and is controlled by authority responsible for the location.

WARNING



High voltages are present inside the chassis when the unit’s power cord is plugged into an electrical outlet. Turn off system power, turn off the power supply, and then disconnect the power cord from its source before removing the chassis cover. Turning off the system power switch does not remove power to components.



The product chassis may be hot when the system is working. Please do not touch the surface before turn off the system power and wait for about 5 minutes until the system cools down.

■ When Working Inside a Computer

Before taking covers off a computer, perform the following steps:

1. Turn off the computer and any peripherals.
2. Disconnect the computer and peripherals from their power sources or subsystems to prevent electric shock or system board damage. This does not apply when hot swapping parts.
3. Follow the guidelines provided in “Preventing Electrostatic Discharge” on the following page.
4. Disconnect any telephone or telecommunications lines from the computer.

In addition, take note of these safety guidelines when appropriate:

- To help avoid possible damage to system boards, wait five seconds after turning off the computer before removing a component, removing a system board, or disconnecting a peripheral device from the computer.
- When you disconnect a cable, pull on its connector or on its strain-relief loop, not on the cable itself. Some cables have a connector with locking tabs. If you are disconnecting this type of cable, press in on the locking tabs before disconnecting the cable. As you pull connectors apart, keep them evenly aligned to avoid bending any connector pins. Also, before connecting a cable, make sure both connectors are correctly oriented and aligned.

CAUTION



Do not attempt to service the system yourself except as explained in this user's guide. Follow installation and troubleshooting instructions closely.

■ Preventing Electrostatic Discharge

Static electricity can harm system boards. Perform service at an ESD workstation and follow proper ESD procedure to reduce the risk of damage to components. We strongly encourage you to follow proper ESD procedure, which can include wrist straps and smocks, when servicing equipment.

You can also take the following steps to prevent damage from electrostatic discharge (ESD):

- When unpacking a static-sensitive component from its shipping carton, do not remove the component's antistatic packing material until you are ready to install the component in a computer. Just before unwrapping the antistatic packaging, be sure you are at an ESD workstation or grounded. This will discharge any static electricity that may have built up in your body.
- When transporting a sensitive component, first place it in an antistatic container or packaging.
- Handle all sensitive components at an ESD workstation. If possible, use antistatic floor pads and workbench pads.
- Handle components and boards with care. Don't touch the components or contacts on a board. Hold a board by its edges or by its metal mounting bracket.
- Do not handle or store system boards near strong electrostatic, electromagnetic, magnetic, or radioactive fields.

■ Instructions for Lithium Battery



WARNING

Danger of explosion when battery is replaced with incorrect type. Only replace with the same or equivalent type recommended by the manufacturer.

Do not dispose of lithium batteries in domestic waste. Dispose of the battery according to the local regulations dealing with the disposal of these special materials (e.g. to the collecting points for disposal of batteries)

Preface

■ How to Use This Guide

This guide is designed to be used as step-by-step instructions for installation, and as a reference for operation, troubleshooting, and upgrades.

■ Unpacking

When unpacking, follow these steps:

1. After opening the box, save it and the packing material for possible future shipment.
2. Remove all items from the box. If any items listed on the purchase order are missing, notify our customer service immediately.
3. Inspect the product for damage. If there is damage, notify our customer service immediately.

■ Regulatory Compliance Statements

This section provides the FCC compliance statement for Class A devices.

FCC Compliance Statement for Class A Devices

The product(s) described in this user's guide has been tested and found to comply with the limits for a Class A digital device, pursuant to Part 15 of the FCC Rules.

These limits are designed to provide reasonable protection against harmful interference when the equipment is operated in a commercial environment. This equipment generates, uses, and can radiate radio frequency energy and, if not installed and used in accordance with the user's guide, may cause harmful interference to radio communications. Operation of this equipment in a residential area (domestic environment) is likely to cause harmful interference, in which case the user will be required to correct the interference (take adequate measures) at their own expense. The user is encouraged to try to correct the interference by one or more of the following measures:

- Reorient or relocate the receiving antenna.

- Increase the separation between the equipment and receiver.
- Connect the equipment to an outlet on a circuit different from that to which the receiver is connected.
- Consult the dealer or an experienced radio/TV technician for help.

Changes or modifications are not expressly approved by us which could void the user's authority to operate the equipment.

NOTE



The assembler of a personal computer system may be required to test the system and/or make necessary modifications if a system is found to cause harmful interference or to be noncompliant with the appropriate standards for its intended use.

■ Maintaining Your Computer

Environmental Factors

■ Temperature

The ambient temperature within an enclosure may be greater than room ambient temperature. Installation in an enclosure should be such that the amount of air flow required for safe operation is not compromised.

Consideration should be given to the maximum rated ambient temperature. Overheating can cause a variety of problems, including premature aging and failure of chips or mechanical failure of devices.

If the system has been exposed to abnormally cold temperatures, allow a two-hour warm-up period to bring it up to normal operating temperature before turning it on. Failure to do so may cause damage to internal components, particularly the hard disk drive.

■ Humidity

High-humidity can cause moisture to enter and accumulate in the system. This moisture can cause corrosion of internal components and degrade such properties as electrical resistance and thermal conductivity. Extreme moisture buildup inside the system can result in electrical shorts, which can cause serious damage to the system.

Buildings in which climate is controlled usually maintain an acceptable level of humidity for system equipment. However, if a system is located in an unusually

humid location, a dehumidifier can be used to maintain the humidity within an acceptable range. Refer to the “Specifications” section of this user’s guide for the operating and storage humidity specifications.

Power Protection

The greatest threats to a system’s supply of power are power loss, power spikes, and power surges caused by electrical storms, which interrupt system operation and/or damage system components. To protect your system, always properly ground power cables and one of the following devices.

■ **Surge Protector**

Surge protectors are available in a variety of types and usually provide a level of protection proportional with the cost of the device. Surge protectors prevent voltage spikes from entering a system through the AC power cord. Surge protectors, however, do not offer protection against brownouts, which occur when the voltage drops more than 20 percent below the normal AC line voltage level.

■ **Line Conditioner**

Line conditioners go beyond the over voltage protection of surge protectors. Line conditioners keep a system’s AC power source voltage at a fairly constant level and, therefore, can handle brownouts. Because of this added protection, line conditioners cost more than surge protectors. However, line conditioners cannot protect against a complete loss of power.

■ **Uninterruptible Power Supply**

Uninterruptible power supply (UPS) systems offer the most complete protection against variations on power because they use battery power to keep the server running when AC power is lost. The battery is charged by the AC power while it is available, so when AC power is lost, the battery can provide power to the system for a limited amount of time, depending on the UPS system.

UPS systems range in price from a few hundred dollars to several thousand dollars, with the more expensive units allowing you to run larger systems for a longer period of time when AC power is lost. UPS systems that provide only 5 minutes of battery power let you conduct an orderly shutdown of the system, but are not intended to provide continued operation. Surge protectors should be used with all UPS systems, and the UPS system should be Underwriters Laboratories (UL) safety approved.

Chapter 1

Introduction

■ Overview

The QBOX-200S Series is a standard / extended temperature fanless digital signage player ideal for space critical applications. This embedded hardware platform features Intel® BayTrail Processor, Atom™ E3825, and DDR3L SO-DIMM. It comes with 1x HDMI, 1x VGA, 2x USB2.0, 1x USB 3.0, 1x GbE LAN, 1x mSATA, 1x Micro SD card cage, 1x COM.

The QBOX-200S Series provides high reliability rugged case not only for great protection from EMI, cold and heat, but also integrated with passive cooling design for quiet fanless operation such as Transportation, Surveillance

Checklist

- QBOX-200S / QBOX-200T
- Power Adapter
- Power Cord
- Driver CD
- Quick installation Guide
- Optional VESA Mounting Kit
- Optional wireless LAN antennas

Features

- Intel® BayTrail Processor, Atom™ E3825
- DDR3L SO-DIMM Socket
- 1x HDMI, 1x VGA, 2x USB2.0, 1x USB 3.0, 1x GbE LAN, 1x COM
- 1x mSATA, 1x Micro SD Card Cage, 1x mini PCIe
- Fanless design
- Extended temperature model available: -20°C ~ 70°C / -4°F ~ 158°F

■ Product Specifications

Construction	Aluminum extrusion
System Board	Intel® BayTrail SoC Processor, Atom™ E3825 (1M Cache, 1.33 GHz)
Memory	1x DDR3L SO-DIMM
Front IO Panel	1x Audio Jack for Line-out & MIC-In 1x Micro SD Card Cage 1x USB 3.0 1x Reset Button 1x HDD LED 1x WiFi LED 1x Power Button (with LED)
Rear IO Panel	1x DC Jack 1x HDMI 1x RJ-45x USB 2.0 1x VGA 1x COM (with RS-232/422/485) 2x Antennas
Storage	1x mSATA Socket 1x Micro SD Card Cage
Expansion	1 x Mini PCI-Express Socket
Cooling	Fanless
OS Support	Windows 8
Power Unit	Input: 100-240 VAC, 50-60 Hz Output: 30W,+12VDC/2.5A ATX/AT Mode Support
Temperature / Humidity	Operating: QBOX-200S: 0°C ~ 45°C / 32°F ~ 113°F QBOX-200T: -20°C ~ 70°C / -4°F ~ 158°F Storage: -20°C ~ 80°C / -4°F ~ 176°F Humidity: 0% ~ 90%
Dimensions	150.6 x 80.8 x 33 mm / 5.93" x 3.18" x 1.30" (W x D x H)
Certifications	CE, FCC Class A

Table 1 QBOX-200S Series Specification

■ System Tour

Refer to the figure below to identify the components of the system.

■ Front Panel

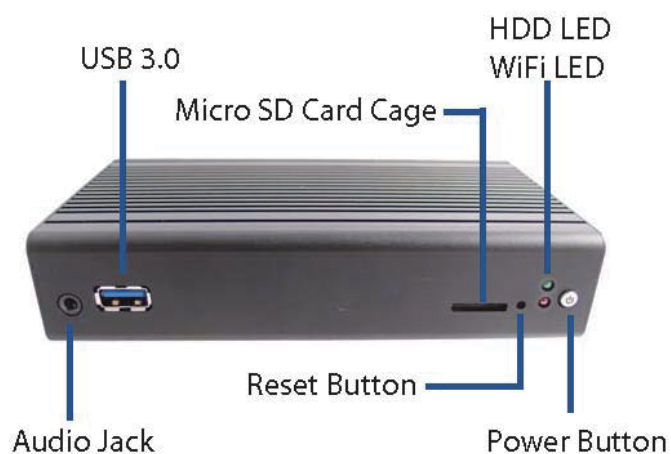


Figure 1 Front Panel

Power Switch

The power button allows powering ON and OFF the system.

WiFi LED (Green)

The WiFi LED will light when the WiFi is on.

HDD LED (Red)

The hard disk LED blinks when data is being written into or read from the HDD.

Phone Jack

Audio Out

The green stereo headphone jack is used to connect the system's audio out signal to amplified speakers or headphones.

MIC-IN

The pink microphone jack is designed to connect the microphone used for video conferencing, voice narrations, or simple audio recordings.

Reset Button

1x reset button for clear CMOS.

USB

The USB (Universal Serial Bus) port is compatible with USB devices such as keyboards, mouse devices, cameras, and hard disk drives. USB allows many devices to run simultaneously on a single computer, with some peripheral acting as additional plug-in sites or hubs.

■ Rear Panel

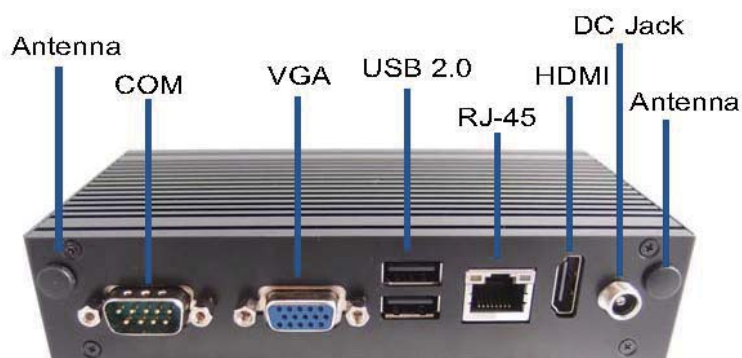


Figure 2 Rear Panel

DC Jack

The supplied power adapter converts AC power to DC for use with this jack. Power supplied through this jack supplies power to the PC. To prevent damage to the PC, always use the supplied power adapter.

COM 1

D-Sub 9 pin connector for RS-232/422/485 connection

Ethernet

The eight-pin RJ-45 LAN port supports a standard Ethernet cable for connection to a local network.

HDMI

HDMI connector for display output

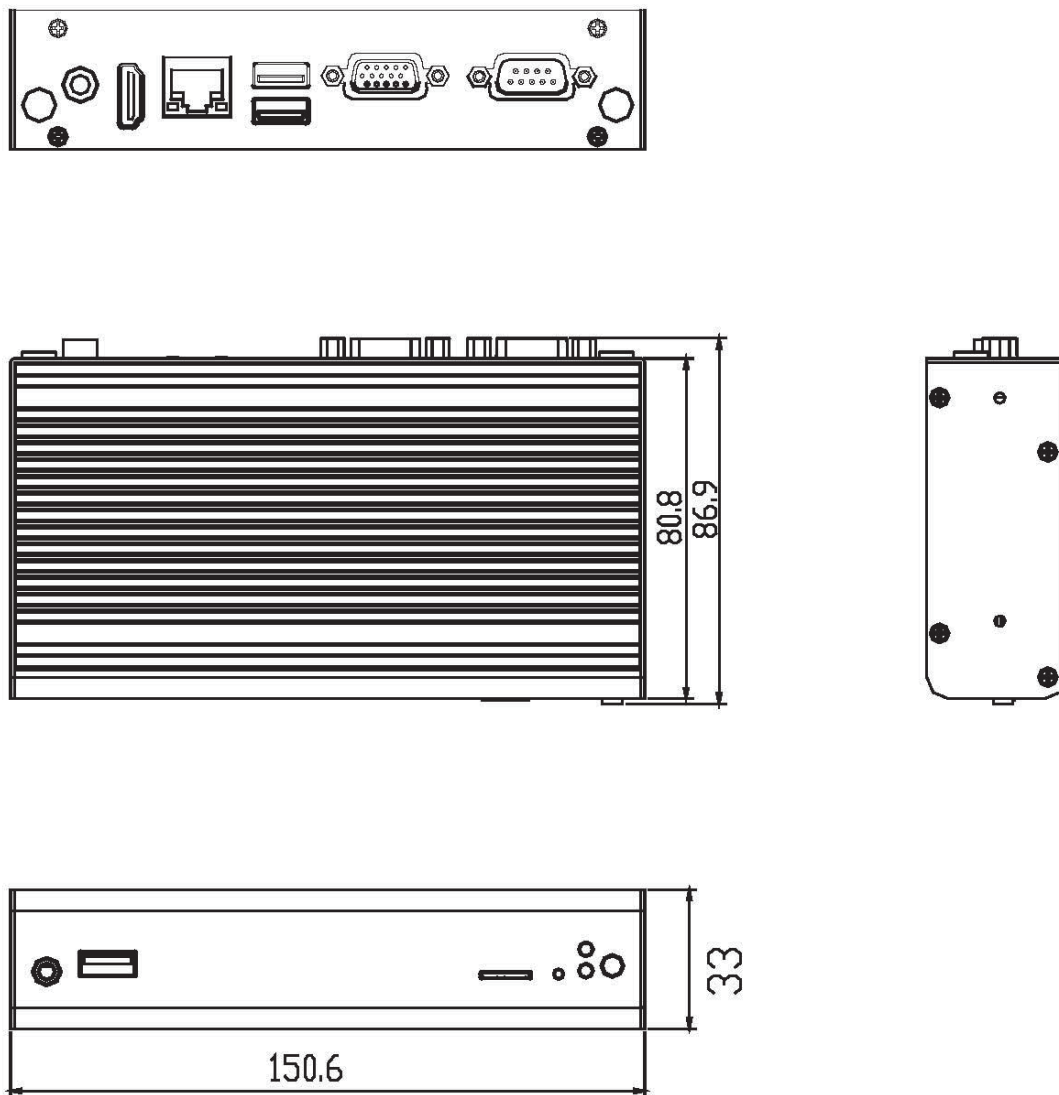
VGA

D-Sub 15 pin VGA connector for display output

Antenna

2x reserved holes for wireless antenna connections.

Mechanical Dimensions



Dimension: 150.6 x 80.8 x 33mm (W x D x H)

Figure 3 Mechanical Dimensions

Chapter 2

Getting Started

■ Setting up your PC

Connect the VGA/ HDMI cable from your display to the VGA/ HDMI port.

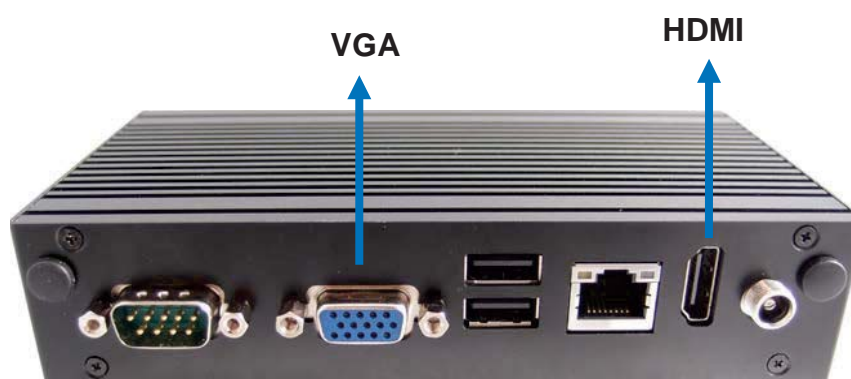


Figure 4 VGA/ HDMI

NOTE



When the system reboots without connecting the VGA/HDMI, there might be no image on screen when you insert the VGA/HDMI cable.

Please pressing <Ctrl>+<Alt>+<F4> simultaneously to show the image on screen.

■ **Connect USB mouse & keyboard**

Your QBOX-200S Series does not come with a keyboard and mouse connector, but you can use any USB keyboard or mouse to connect with your computer.



Figure 5 Connect USB mouse & keyboard

NOTE



Using a third-party USB mouse or keyboard may require software drivers. Check the manufacturer's website for the latest software drivers.

■ **Connect LAN port**

Connect one end of a network cable to the LAN port on the system rear panel and the other end to a hub or switch.



Figure 6 RJ45 connector

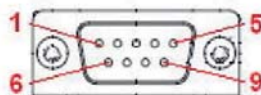
■ **COM Ports**

COM ports with the pin definitions.



COM 1

COM1 RS-232/422/485 Port 1 D-SUB 9P



Pin	RS-232	RS-422	Half Duplex RS-485	Full Duplex RS-485
1	DCD	TX-	DATA-	TX-
2	RXD	TX+	DATA+	TX+
3	TXD	RX+	N/A	RX+
4	DTR	RX-	N/A	RX-
5	GND	GND	GND	GND
6	DSR	N/A	N/A	N/A
7	RTS	N/A	N/A	N/A
8	CTS	N/A	N/A	N/A
9	RI	RI	N/A	N/A

Figure 7 Com ports

■ **Turning on the system**

1. Connect the power adapter cable to the DC Jack (DC IN) of the QBOX-200S Series
2. Connect the power cable to the power adapter
3. Connect the power cable to a power outlet
4. Press the power switch on the front panel to turn on the system

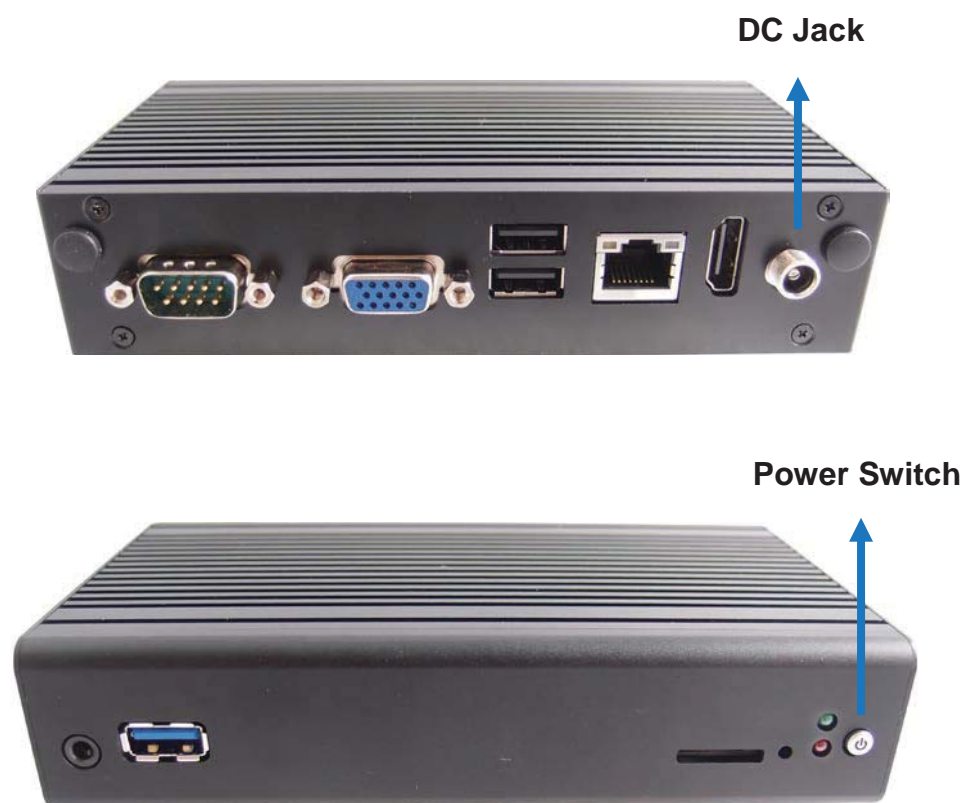


Figure 8 Turning on the system

■ Mounting your PC to a monitor

Secure the VESA mounting kit to your monitor with four screws.

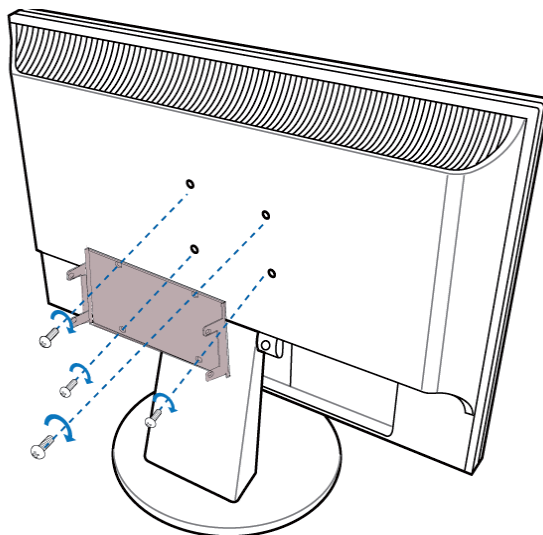


Figure 9 VESA mounting (1)

NOTE



To fasten the metal shelf, your monitor must comply with VESA75 or VESA100 standard.

Place the QBOX-200S Series onto the monitor and secure it with the four screws properly on both sides of VESA mount kit as shown below.

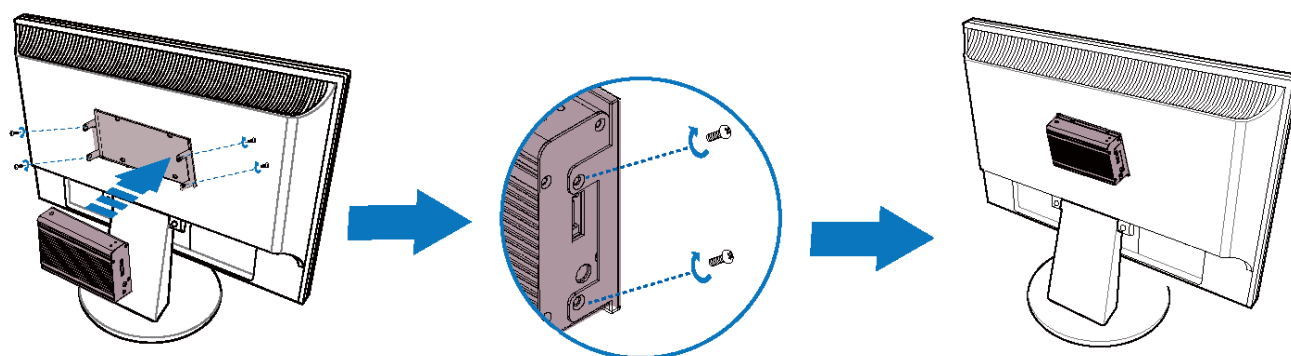


Figure 10 VESA mounting (2)

Chapter 3

AMI BIOS Setup

■ Overview

This chapter provides a description of the AMI BIOS. The BIOS setup menus and available selections may vary from those of your product. For specific information on the BIOS for your product, please contact us



NOTE: The BIOS menus and selections for your product may vary from those in this chapter. For the BIOS manual specific to your product, please contact us

AMI's ROM BIOS provides a built-in Setup program, which allows the user to modify the basic system configuration and hardware parameters. The modified data will be stored in a battery-backed CMOS, so that data will be retained even when the power is turned off. In general, the information saved in the CMOS RAM will not need to be changed unless there is a configuration change in the system, such as a hard drive replacement or when a device is added.

It is possible for the CMOS battery to fail, which will cause data loss in the CMOS only. If this happens you will need to reconfigure your BIOS settings.

■ Main Menu

The BIOS Setup is accessed by pressing the DEL key after the Power-On Self-Test (POST) memory test begins and before the operating system boot begins. Once you enter the BIOS Setup Utility, the Main Menu will appear on the screen. The Main Menu provides System Overview information and allows you to set the System Time and Date. Use the “<” and “>” cursor keys to navigate between menu screens.

Table 2 QBOX-200S BIOS Main Menu

BIOS SETUP UTILITY				
Main	Advanced	Boot	Security	Save & Exit
Product Information				
Product Name		QBOX-200S		
BIOS Version		R0.04 (x64)		
BIOS Build Date		07/04/2014		
ME FW Version		01.00.02.1067		
CPU Information				
Intel® Atom™ BayTrail Dual Core E3825				
Microcode Revision		321		
Processor Cores		2		
Memory Information				
Total Size		2048 MB (DDR3L)		
Frequency		1066 MHz		
System date		[Wed 01/01/2014]		
System time		[13:23:12]		
Access Level		Administrator		
→ ← Select Screen ↑↓ Select Item Enter: Select +- Change Opt. F1: General Help F2: Previous Values F3: Optimized Defaults F4 Save & Exit ESC Exit				
Version 2.16.1242. Copyright (C) 2013, American Megatrends, Inc.				

Table 3 QBOX-200T BIOS Main Menu

BIOS SETUP UTILITY				
Main	Advanced	Boot	Security	Save & Exit
Product Information				
Product Name		QBOX-200T		
BIOS Version		R0.04 (x64)		
BIOS Build Date		07/04/2014		
ME FW Version		01.00.02.1067		
CPU Information				
Intel® Atom™ BayTrail Dual Core E3825				
Microcode Revision		321		
Processor Cores		2		
Memory Information				
Total Size		2048 MB (DDR3L)		
Frequency		1066 MHz		
System date		[Wed 01/01/2014]		
System time		[13:23:12]		
Access Level		Administrator		
→ ← Select Screen ↑↓ Select Item Enter: Select +- Change Opt. F1: General Help F2: Previous Values F3: Optimized Defaults F4 Save & Exit ESC Exit				
Version 2.16.1242. Copyright (C) 2013, American Megatrends, Inc.				

■ Advanced Menu

Table 4 Advanced Menu

BIOS SETUP UTILITY		
Main	Advanced	Boot Security Server Mgmt Save & Exit
Onboard LAN1 Controller	[Enabled]	
Onboard LAN1 Boot	[Disabled]	
Audio Controller	[Enabled]	
> Display Configuration		→ ← Select Screen
> Super IO Configuration		↑↓ Select Item
> CPU Chipset Configuration		Enter: Select
> SATA Configuration		+ - Change Opt.
> USB Configuration		F1: General Help
> TPM Configuration		F2: Previous Values
> H/W Monitor		F3: Optimized Defaults
		F4 Save & Exit
		ESC Exit
Version 2.16.1242. Copyright (C) 2013, American Megatrends, Inc.		

Onboard LAN 1 Controller

Options: Disabled, Enabled

Onboard LAN 1 Boot

Options: Disabled, Enabled

Audio Controller

Options: Disabled, Enabled

Table 5 Advanced Menu – Display Configuration

BIOS SETUP UTILITY		
Main	Advanced	Boot Security Server Mgmt Save & Exit
Display Configuration		→ ← Select Screen ↑↓ Select Item Enter: Select +- Change Opt. F1: General Help F2: Previous Values F3: Optimized Defaults F4 Save & Exit ESC Exit
Primary Display	[Auto]	
UMA Frame Buffer Size	[256 MB]	
DVMT Pre-Allocated	[64M]	
DVMT Total Gfx Mem	[256 M]	
Primary IGFX Boot Display	[VBIOS Default]	
Version 2.16.1242. Copyright (C) 2013, American Megatrends, Inc.		

Primary Display

Options: Auto, IGD

UMA Frame Buffer Size

Options: 128MB, 256MB, 512MB

DVMT Pre-Allocated

Options: 64M, 96M, 128M, 160M, 192M, 224M, 256M, 288M, 320M, 352M, 384M, 416M, 448M, 480M, 512M

DVMT Total Gfx Mem

Options: 128M, 256M, MAX

Primary IGFX Boot Display

Options: VBIOS Default, CRT, HDMI, LVDS

Table 6 Advanced Menu – Super IO Configuration

BIOS SETUP UTILITY	
Main	Advanced
Super IO Configuration	→ ← Select Screen
>Serial Port 1 Configuration	↑↓ Select Item
	Enter: Select
	+ - Change Opt.
	F1: General Help
	F2: Previous Values
	F3: Optimized Defaults
	F4 Save & Exit
	ESC Exit
Version 2.16.1242. Copyright (C) 2013, American Megatrends, Inc.	

Table 7 Advanced Menu – Super IO Configuration – Serial Port 1 Configuration

BIOS SETUP UTILITY	
Main	Advanced
Serial Port 1 Configuration	→←: Select Screen
Serial Port	↑↓: Select Item
Device Settings	Enter: Select
	+/-: Change Opt.
	F1: General Help
	F2: Previous Values
	F3: Optimized Defaults
	F4: Save and Exit
	ESC: Exit
Change Settings	[Enabled]
Serial Port 1 Type	IO=3F8h ; IRQ=4;
	[Auto]
	[RS232]
Version 2.15.1226. Copyright (C) 2012 American Megatrends, Inc.	

Serial Port

Options: Disabled, Enabled

Change Settings

Options: Auto,

IO=3F8h; IRQ=4;

IO=3F8h; IRQ=3, 4, 5, 6, 7, 9, 10, 11, 12;

IO=2F8h; IRQ=3, 4, 5, 6, 7, 9, 10, 11, 12;

IO=3E8h; IRQ=3, 4, 5, 6, 7, 9, 10, 11, 12;

IO=2E8h; IRQ=3, 4, 5, 6, 7, 9, 10, 11, 12;

Serial Port Type

Options: RS232, RS422, RS485

Table 8 Advanced Menu –CPU Advanced Configuration

BIOS SETUP UTILITY				
Main	Advanced	Boot	Security	Save & Exit
CPU Chipset Configuration				→ ← Select Screen ↑↓ Select Item Enter: Select +- Change Opt. F1: General Help F2: Previous Values F3: Optimized Defaults F4 Save & Exit ESC Exit
EIST		[Enabled]		
Limit CPUID Maximum		[Disabled]		
Execute Disable Bit		[Enabled]		
Intel Virtualization Technology		[Disabled]		
Version 2.16.1242. Copyright (C) 2013, American Megatrends, Inc.				

EIST

Options: Disabled, Enabled

Limit CPUID Maximum

Options: Disabled, Enabled

Execute Disable Bit

Options: Disabled, Enabled

Intel® Virtualization Tech

Options: Disabled, Enabled

Table 9 Advanced Menu –SATA Configuration

BIOS SETUP UTILITY				
Main	Advanced	Boot	Security	Save & Exit
SATA Controller(s)				→ ← Select Screen ↑↓ Select Item Enter: Select +- Change Opt. F1: General Help F2: Previous Values F3: Optimized Defaults F4 Save & Exit ESC Exit
Serial-ATA (SATA)		[Enabled]		
SATA Mode		[AHCI Mode]		
mSATA Port 1		Empty		
Port 1		[Enabled]		
Version 2.16.1242. Copyright (C) 2013, American Megatrends, Inc.				

SATA

Options: Disabled, Enabled

SATA Mode

Options: IDE Mode, AHCI Mode

Port 1

Options: Disabled, Enabled

Table 10 Advanced Menu –USB Configuration

BIOS SETUP UTILITY	
Main	Advanced
USB Configuration USB Devices: 1 Keyboard, 2 Hubs Legacy USB Support [Enabled] xHCI Legacy Support [Enabled] xHCI hand-off [Enabled] EHCI Hand-off [Disabled] USB Mass Storage Driver Support [Enabled] xHCI Mode [Smart Auto]	
→ ← Select Screen ↑↓ Select Item Enter: Select +- Change Opt. F1: General Help F2: Previous Values F3: Optimized Defaults F4 Save & Exit ESC Exit	
Version 2.16.1242. Copyright (C) 2013, American Megatrends, Inc.	

Legacy USB Support

Options: Disabled, Enabled, Auto

XHCI Legacy Support

Options: Disabled, Enabled

XHCI hand-off

Options: Disabled, Enabled

EHCI hand-off

Options: Disabled, Enabled

USB Mass Storage Driver Support

Options: Disabled, Enabled

XHCI hand-off

Options: Smart Auto, Enabled

Table 11 Advanced Menu –TPMConfiguration

BIOS SETUP UTILITY				
Main	Advanced	Boot	Security	Save & Exit
TPM Configuration				→ ← Select Screen ↑↓ Select Item Enter: Select +- Change Opt. F1: General Help F2: Previous Values F3: Optimized Defaults F4 Save & Exit ESC Exit
Security Device Support		[Disabled]		
Current Status Information				
Version 2.16.1242. Copyright (C) 2013, American Megatrends, Inc.				

Security Device Support

Options: Disabled, Enabled

Table 12 Advanced Menu –H/W Monitor

BIOS SETUP UTILITY				
Main	Advanced	Boot	Security	Save & Exit
PC Health Status				→ ← Select Screen
CPU Temperature		: +39 C		↑↓ Select Item
System Temperature		: +39 C		Enter: Select
+VCORE		: +0.789 V		+ - Change Opt.
+VIN		: +11.644 V		F1: General Help
+5V		: +5.106 V		F2: Previous Values
+VMEN		: +1.349 V		F3: Optimized Defaults
				F4 Save & Exit
				ESC Exit
Version 2.16.1242. Copyright (C) 2013, American Megatrends, Inc.				

Table 13 Power Configuration

BIOS SETUP UTILITY		
Main	Advanced	Boot Security Server Mgmt Save & Exit
Power Management Configuration		
ACPI Sleep State	[S3 (Suspend to RAM)]	→ ← Select Screen ↑↓ Select Item Enter: Select +- Change Opt. F1: General Help F2: Previous Values F3: Optimized Defaults F4 Save & Exit ESC Exit
Restore AC Power Loss	[Power Off]	
Power Saving Mode	[Disabled]	
Resume Event control		
Resume By PCIE Device	[Disabled]	
Resume By Ring Device	[Disabled]	
Resume By RTC Alarm	[Disabled]	
>Watchdog Timer Configuration		
Version 2.16.1242. Copyright (C) 2013, American Megatrends, Inc.		

ACPI Sleep State

Options: Suspend Disabled, S1 (CPU Stop Clock), S3 (Suspend to RAM)

Restore AC Power Loss

Options: Power Off, Power On, Last State

Resume By PCIE Device

Options: Disabled, Enabled

Resume By RTC Alarm

Options: Disabled, Enabled

EUP Power Saving Mode

Options: Disabled, Enabled

Watchdog Timer Configuration
 WDT Function [Disabled]

Options: Disabled, Enabled

■ Boot Menu

Table 14 Boot Menu

BIOS SETUP UTILITY				
Main	Advanced	Boot	Security	Save & Exit
Boot Configuration Full Screen LOGO Display [Disabled] Setup Prompt Timeout 1 Bootup NumLock State [On] Keyboard Detect Warning [Enabled] CSM Support [Enabled] Boot Option Filter [Legacy Only]			→ ← Select Screen ↑↓ Select Item Enter: Select +- Change Opt. F1: General Help F2: Previous Values F3: Optimized Defaults F4 Save & Exit ESC Exit	
Boot Option Priorities				
Version 2.16.1242. Copyright (C) 2013 American Megatrends, Inc.				

Full Screen LOGO Display

Options: Disabled, Enabled

Bootup Numlock State

Options: On, Off

Keyboard Detect Warning

Options: Disabled, Enabled

CSM Support

Options: Disabled, Enabled

Boot Option Filter

Options: UEFI and Legacy, Legacy only, UEFI only

■ Security Menu

Table 15 Security Menu

BIOS SETUP UTILITY				
Main	Advanced	Boot	Security	Save & Exit
Password Description If ONLY the Administrator's password is set, then this only limits access to Setup and is only asked for when entering Setup If ONLY the User's password is set, then this is a power on password and must be entered to boot or enter Setup. In Setup the User will have Administrator rights The password length must be in the following range: Minimum Length 3 Maximum length 20 Administrator Password User Password HDD Security Configuration: HDD 0: WDC WD1600BE			→ ← Select Screen ↑↓ Select Item Enter: Select +- Change Opt. F1: General Help F2: Previous Values F3: Optimized Defaults F4 Save & Exit ESC Exit	
Version 2.16.1242. Copyright (C) 2013, American Megatrends, Inc.				

■ Save & Exit Menu

Table 16 Save & Exit Menu

BIOS SETUP UTILITY				
Main	Advanced	Boot	Security	Save & Exit
Save Changes and Reset Discard Changes and Reset Save Options Save Changes Discard Changes Restore Defaults			→ ← Select Screen ↑↓ Select Item Enter: Select +- Change Opt. F1: General Help F2: Previous Values F3: Optimized Defaults F4 Save & Exit ESC Exit	
Version 2.16.1242. Copyright (C) 2013, American Megatrends, Inc.				

Save Changes and Exit

Exit system setup after saving the changes. Once you are finished making your selections, choose this option from the Exit menu to ensure the values you selected are saved to the CMOS RAM. The CMOS RAM is sustained by an onboard backup battery and stays on even when the PC is turned off. When you select this option, a confirmation window appears. Select [Yes] to save changes and exit.

Discard Changes and Exit

Exit system setup without saving any changes. Select this option only if you do not want to save the changes that you made to the Setup program. If you made changes to fields other than system date, system time, and password, the BIOS asks for a confirmation before exiting.

Discard Changes

Discards changes done so far to any of the setup values. This option allows you to discard the selections you made and restore the previously saved values. After selecting this option, a confirmation appears. Select [Yes] to discard any changes and load the previously saved values.

Load Optimal Defaults

Load Optimal Default values for all the setup values. This option allows you to load optimal default values for each of the parameters on the Setup menus, which will provide the best performance settings for your system. The F9 key can be used for this operation.

Load Failsafe Defaults

Load Optimal Default values for all the setup values. This option allows you to load failsafe default values for each of the parameters on the Setup menus, which will provide the most stable performance settings. The F8 key can be used for this operation.

Chapter 4

Driver Installation

If your QBOX-200S Series does not come with an operating system pre-installed, you will need to install an operating system and the necessary drivers to operate it. After you have finished assembling your system and connected the appropriate power source, power it up using the power supply and install the desired operating system.

You can download the drivers for the QBOX-200S Series from the our website and install as instructed there. For other operating systems, please contact us.