

The information in this publication is provided for reference only. All information contained in this publication is believed to be correct and complete. Thermo Electron Corporation shall not be liable for errors contained herein nor for incidental or consequential damages in connection with the furnishing, performance or use of this material. All product specifications, as well as the information contained in this publication, are subject to change without notice.

This publication may contain or reference information and products protected by copyrights or patents and does not convey any license under our patent rights, nor the rights of others. We do not assume any liability arising out of any infringements of patents or other rights of third parties.

We make no warranty of any kind with regard to this material, including but not limited to the implied warranties of merchantability and fitness for a particular purpose.

Copyright © 2004 by Thermo Electron Corporation, Madison WI 53711. Printed in the United States of America. All world rights reserved. No part of this publication may be stored in a retrieval system, transmitted, or reproduced in any way, including but not limited to photocopy, photograph, magnetic or other record, without the prior written permission of Thermo Electron Corporation.

For technical assistance, please contact:

Thermo Electron Corporation
5225 Verona Road
Madison WI 53711-4495

Telephone: 800-642-6538 or 608-276-6373
Fax: 608-273-6883
E-mail: techsupport.analyze@thermo.com

Nicolet, OMNIC, Avatar, Val-Q, Centaurus, RSVP, Smart Accessory, Continuum, Smart Purge, OMNI-Transmission, FiberPort, Ever-Glo, Passport, Import, SeaPort, Solid-Substrate, Talon, PLUS, Vectra-Plus, Snap-In, SabIR, Sync, UpDRIFT, Smart Refractor, SpeculATR, SAGA, OMNI-Sampler, Smart Collector, Smart ARK, Gemini, Endurance, InspectIR, Orbit and E.S.P. are trademarks of Thermo Electron Scientific Instruments Corporation, a subsidiary of Thermo Electron Corporation.

MIRacle is a trademark of PIKE Technologies.
SplitPea is a trademark of Harrick Scientific Corporation.
DuraScope and DuraSamplIR are trademarks of SensIR Technologies.
Windows is a trademark of Microsoft Corporation.
Intel and Pentium are trademarks of Intel Corporation.
PS/2 is a trademark of International Business Machines Corporation.

269-155800



Contents

Welcome	1
About this manual	2
Questions or concerns	3
System requirements	4
Installing OMNIC.....	5
Where to find the information you need	6
Wizards and tutorials	6
On-line Help	7
Finding answers to your questions.....	9
Before You Collect Spectra	14
Checking the purge.....	15
Smart Purge settings	16
Checking the desiccant.....	17
Turning on the system components.....	18
Cooling the detector	19
Starting OMNIC	20
Selecting an experiment	21
Your First Experiment	23
The OMNIC window.....	24
Spectral window	24
Menu bar	25
Experiment drop-down list box	25
Bench Status indicator	26
Toolbar	26
Collecting a sample spectrum	27
Installing the standard sample holder	28
Collecting the sample spectrum.....	30

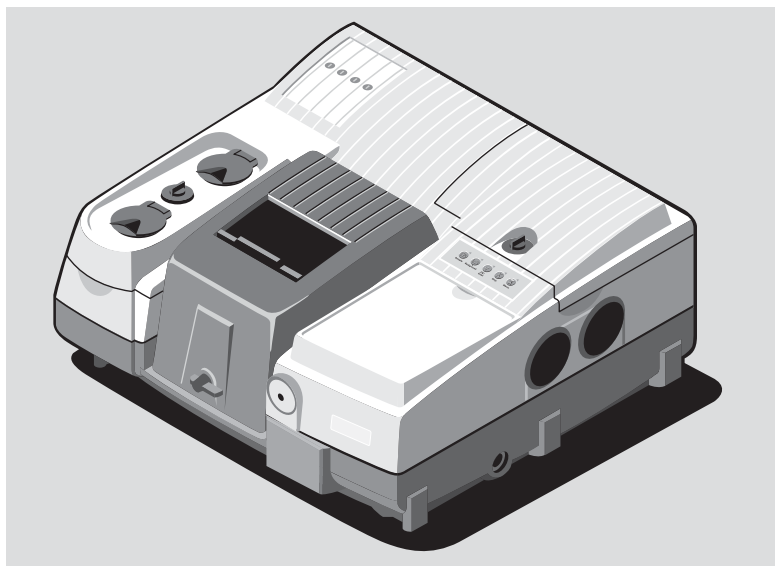
How do I know if my spectrum is good?	37
Saving the spectrum	37
Converting the spectrum's units.....	38
Labeling a peak with the annotation tool	40
Verifying the composition of the sample	43
Creating a user library	47
Adding a spectrum to a user library	47
Creating and printing a report	48
Spectrometer Basics.....	51
Spectrometer components	51
Using the data collection buttons.....	52
What's inside?.....	54
What is on the rear panel?.....	55
Turning on the spectrometer power	56
Using a light source	58
Using beamsplitters and detectors.....	60
Selecting the right beamsplitter and detector.....	60
Improving the quality of your spectral data.....	64
How to collect data in the visible spectral range.....	70
About the moving mirror velocity.....	71
Spectrometer Options	72
Using the filter wheel	72
Using the energy screen wheel.....	75
Using the internal polarizer	78
Accessories	81
Smart Accessories	81
Other sampling accessories for different applications	85
System accessories	90
How to cable an accessory	91
Pass-through connectors	91
Detector/Motors connector	95

Quick Answers to Your Questions About Using OMNIC	97
Collecting spectra	97
Converting spectra to other units	101
Using spectral libraries	102
Opening, saving and deleting spectra	106
Printing	109
Displaying spectra	110
Correcting spectra	116
Subtracting, adding, multiplying and dividing spectra	116
Customizing OMNIC	119
Other questions	120
Quick Answers to Your Questions About	
Using the Spectrometer	123
Maintenance and Service	128
Running diagnostic tests on spectrometer components	129
Maintaining your spectrometer	130
Aligning the spectrometer	130
Aligning an accessory	132
Checking spectrometer performance	132
Servicing your spectrometer	134
Troubleshooting Software Problems	135
Troubleshooting Hardware Problems	137
Performing advanced diagnostic tests	148
Troubleshooting Applications Problems	150
Index	155



Welcome

Congratulations on your purchase of a Nicolet 4700 or Nicolet 6700 spectrometer from Thermo Electron! The spectrometer lets you collect spectra in the mid-IR, far-IR and near-IR spectral ranges. The system integrates advanced hardware features with the power and flexibility of Thermo Electron's OMNIC software*.



If you have not used the spectrometer before, view the “Spectrometer Tour” and “Getting Started With OMNIC” tutorial available through Getting Started in the Help menu of OMNIC.

* Some dedicated systems use other Thermo Electron software packages.

About this manual

This manual explains how to use the system to collect and process FT-IR spectra after a Nicolet 4700 or a Nicolet 6700 spectrometer is installed. Included is information about using your OMNIC software as well as chapters on how to operate, maintain and service the spectrometer.

This manual describes some hardware features that are not available on all Nicolet models. Use the instructions for the features on your system.

Although the appearance of your spectrometer may vary from some of the illustrations in this manual, the instructions are correct for your system.

The following conventions are used in this manual to draw your attention to the on-line documentation and other important information.



This symbol tells you that you can find more information in the on-line tutorials. To access a tutorial, click the Help menu in OMNIC.



This symbol tells you that you can find more information in the on-line OMNIC Help system. Choose OMNIC Help Topics from the Help menu.



This symbol tells you that you can find more information in this manual.

Note Notes contain helpful supplementary information. ▲

Important Follow instructions labeled “Important” to avoid damaging the system hardware or losing data. ▲

▲ Caution Indicates a potentially hazardous situation which, if not avoided, may result in minor or moderate injury. It may also be used to alert against unsafe practices. ▲

▲ Warning Indicates a potentially hazardous situation which, if not avoided, could result in death or serious injury. ▲

▲ Danger Indicates an imminently hazardous situation which, if not avoided, will result in death or serious injury. ▲

Questions or concerns

In case of emergency, follow the procedures established by your facility. If you have questions or concerns about safety or need assistance with operation, repairs or replacement parts, use the information below to contact Thermo Electron. Outside the U.S.A., contact the local Thermo Electron sales or service representative.

Phone: 1-800-642-6538 (U.S.A.) or
+608-273-5015 (worldwide)

Fax: +608-273-6883 (worldwide)

E-mail: techsupport.analyze@thermo.com

World Wide Web: <http://www.thermo.com/spectroscopy>

System requirements

If you are supplying your own computer, be sure that it meets the following requirements for hardware and software.

- One of the following versions of Windows® software:
 - Windows 2000 (latest Service Pack recommended)
 - Windows XP Professional (latest Service Pack recommended)
- Microprocessor:
Intel® Pentium® III, 1.0 GHz (recommend)
Intel Pentium II, 400 MHz (minimum)
- Random access memory (RAM):
256 megabytes (recommended)
128 megabytes (minimum)
If you plan to use a microscope,
1 gigabyte (recommended)
512 megabytes (minimum)
- Disk drives:
5.0 gigabytes (recommended) hard disk drive
2.0 gigabytes (minimum) hard disk drive
1.44-megabyte floppy disk drive for 3.5-inch floppy disks
Quad speed CD-ROM drive
- Video:
15-inch SVGA
4 megabytes of video RAM
16-bit video card capable of displaying at least 256 colors with
1024 by 768 resolution

- IO devices and card slots:
Sound card and speakers for listening to the audio portions of tutorials

Keyboard and serial, USB or PS/2®-style mouse

Printer port (USB, parallel and/or serial) if you plan to print on a local printer

One USB 2.0 connector (not a hub) for data transfer

Ethernet port if you plan to connect the system to a network
Internet connection if you plan to use the internet features of the software

One additional serial port if you plan to use PLUS™ 2 Liquid Analysis System, Centaurus microscope with motorized stage, or standard Continuum microscope

Two additional serial ports if you plan to use a Continuum microscope with a motorized stage

Two additional serial ports and one additional USB 2.0 connection (not a hub) if you plan to use a Continuum XL microscope

One additional PCI slot if you plan to use a microscope with video capability

Installing OMNIC

If you purchased your computer from Thermo Electron, your software is already installed. If you provided your own computer, you need to install OMNIC on your hard drive. See the instructions that came with the software CD, or read “Installing OMNIC or EZ OMNIC” in the document titled *OMNIC Spectroscopy Software* that came with your software. You can use these same instructions if you ever need to reinstall the software.

Where to find the information you need

The on-line and printed documentation included with your system is designed to let you find the information you need quickly. We recommend first using the on-line documentation provided with OMNIC when you have a question. OMNIC includes several on-line tutorials, a wizard and a complete Help system. See “Starting OMNIC” in the “Before You Collect Spectra” chapter for information about starting OMNIC.

Wizards and tutorials

The following wizards and tutorials are available on your system.

Getting Started With OMNIC – This tutorial, available through Getting Started in the Help menu, introduces you to OMNIC. It includes basic information about the OMNIC window, using the toolbar and tool palette, creating and using spectral libraries, creating your own experiment files, and using on-line laboratory notebooks to create and save reports.

Spectrometer Tour – When you finish this tutorial, you will be familiar with the major components in your spectrometer. The tutorial is available through Getting Started in the Help menu.

Beginner’s Guide to FT-IR – Run this tutorial to learn how an FT-IR spectrometer works and the theory behind FT-IR spectroscopy. The tutorial is available through Getting Started in the Help menu.

Sampling Techniques – This item in the Help menu gives you access to the “Choosing a Sample Technique” tutorial, which helps you choose the best technique for your analysis. Also available are tutorials describing how to install and use a number of sampling accessories, including Smart Accessories.

Learning OMNIC – This item in the Help menu gives you access to tutorials that explain how to use OMNIC to collect spectra and perform a number of other software operations.

Spectrometer Help Topics – This tutorial, available in the Help menu, contains step-by-step instructions for installing optional hardware, changing replaceable parts, maintaining your spectrometer, and setting up the system for a variety of experiments. If you ever have a problem with your spectrometer, use this tutorial to access troubleshooting information and get part number and ordering information.

Technical Support – This tutorial, available in the Help menu, outlines the many support, training, and custom application services available from Thermo Electron. It includes Technical Support telephone and fax numbers, as well as e-mail and web site addresses.

The **Library Creation Wizard** prompts you, step by step, through creating a user library of spectra. The wizard appears when you click the Create Library button in Library Manager, available in the Analyze menu in OMNIC.

On-line Help

Choose the Help Topics that interest you from the Help menu to display that Help system. It lets you quickly find answers to your questions about using the software.

There are several other ways to enter a Help system:

- You can see information about many features in OMNIC (such as a parameter in a dialog box) by clicking the feature using the right mouse button. (If the active dialog box or window includes a question mark button near the upper-right corner, you may need to first click that button and then click the feature of interest using the left mouse button.) A brief description of the item appears, and in most cases one or more buttons that you can click to display more detailed information. Here is an example:

Displays the X and Y values of the pointer location.

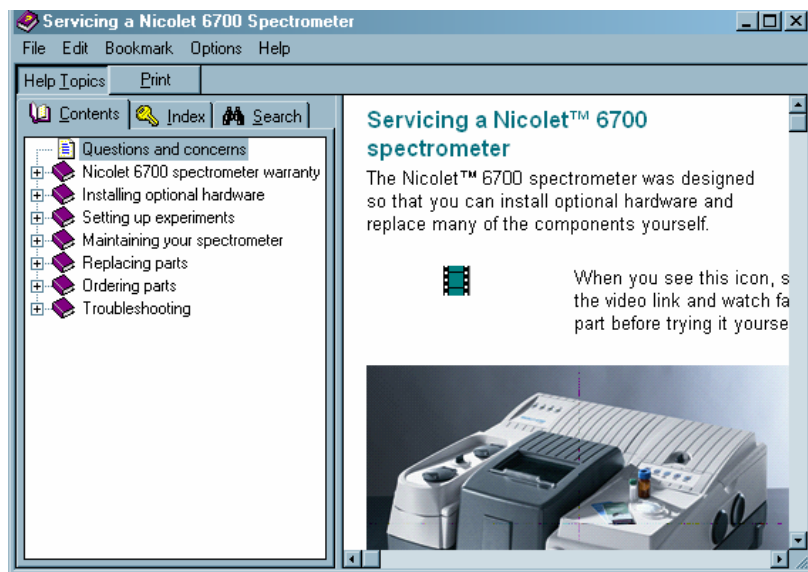
Discussion

How To

Click the Discussion button to display a complete discussion of the item (or the dialog box or window that contains the feature). Click the How To button to display a step-by-step procedure for using the item (or the dialog box or window that contains the item).

- The left pane in each help window lists the topics available in that help system.

Here is an example of a help window showing the contents of some of the books in the system:



Finding answers to your questions

Use the following sections to help you locate the information you need in the on-line and printed documentation. The on-line documentation is available in the Help menu of OMNIC.

The basics

How do I turn on the system?



Spectrometer Tour (available through Getting Started)...
“Powering up”



“Before You Collect Spectra” chapter...
“Turning on the system components”

How do I start the software?



“Before You Collect Spectra” chapter...
“Starting OMNIC”

How do I prepare the software for data collection?



Collecting a Spectrum (available through Learning OMNIC)...
“Preparing the Software”

How can I learn how to use the software?



View the tutorials listed when you point to Getting Started or Learning OMNIC.



OMNIC Help Topics includes complete instructions for all the OMNIC features. Use the Index tab or Contents tab to find the information you need.

Using the spectrometer
and changing parts



What's inside the spectrometer?

Spectrometer Tour (available through Getting Started)...
“Inside the spectrometer”

How does the spectrometer work?



Beginner's Guide to FT-IR (available through Getting Started)

How do I purge the system?



Spectrometer Help Topics...
“Installing purge controls” in “Installing optional hardware”

How do I use Smart Purge ?



Spectrometer Help Topics...
“Setting the Smart Purge controls” in “Installing optional hardware”

How do I change beamsplitters?



Spectrometer Help Topics...
“Changing beamsplitters” in “Setting up experiments”

“Selecting a beamsplitter, detector, and source” in
“Setting up experiments”

How do I change detectors?



Spectrometer Help Topics...
“Selecting a beamsplitter, detector, and source” and
“Changing detectors” in “Setting up experiments”

How do I install a source?



Spectrometer Help Topics...
“Selecting a beamsplitter, detector, and source” and
“Installing a new source” in “Setting up experiments”

Collecting spectra

Which beamsplitter and detector should I use?



Spectrometer Help Topics...
“Selecting a beamsplitter, detector, and source” in “Setting up experiments” (See the tables showing the compatibility of sources, beamsplitters and detectors.)



“Spectrometer Basics” chapter...
“Selecting the right beamsplitter and detector” in “Using beamsplitters and detectors”

How do I install a sample?



Spectrometer Tour (available through Getting Started)...
“Installing samples”

How do I collect a spectrum?



Collecting a Spectrum (available through Learning OMNIC)



“Your First Experiment” chapter

Accessories

What accessories are available?



Spectrometer Tour (available through Getting Started)...
“Accessories”



“Accessories” chapter

How do I install an accessory?



Spectrometer Help Topics...

“Installing optional hardware” (Step-by-step instructions and, in many cases, on-line videos help you install accessories. If your accessory is not covered on-line, use the printed instructions.)

Maintenance and service

How should I maintain my spectrometer?



Spectrometer Tour (available through Getting Started)...
“Service and maintenance”



Spectrometer Help Topics...
“Maintaining your spectrometer”



“Maintenance and Service” chapter

What should I do if there is a problem with the system?

Contact Thermo Electron technical support. Outside the U.S.A., contact the local Thermo Electron sales or service representative.

Phone: 1-800-642-6538 (U.S.A.) or
+608-273-5015 (worldwide)

Fax: +608-273-6883 (worldwide)

E-mail: Techsupport.analyze@thermo.com

World Wide Web: <http://www.thermo.com/spectroscopy>



Before You Collect Spectra

Warning

The *Spectrometer Safety Guide* that came with your system contains important safety information. This guide is available in several languages. Contact your local Thermo Electron office for information about the languages that are available. Before you use the system, read the entire guide. To prevent personal injury and damage to equipment, follow the safety precautions contained in the guide whenever you use the system. ▲

It's easy to collect spectra with your spectrometer. By leaving the system turned on at all times—with the needed components already installed—you can keep it ready to use with a minimum of preparation. Keeping the system on also improves its stability and gives you more consistent results.

All the things you need to check before collecting spectra are listed below; each of these items is discussed in a section of this chapter. By the time you have run through these items once or twice in the course of your work, you will know how to check the system and start collecting spectra quickly.

- Check the purge or desiccant.
- Make sure the system components are powered on.
- Cool the detector (if you are using an MCT, InSb or other detector that requires cooling with liquid nitrogen).
- Start OMNIC and select an experiment.

Checking the purge

Skip this section if you purchased the “Sealed and Desiccated” option.

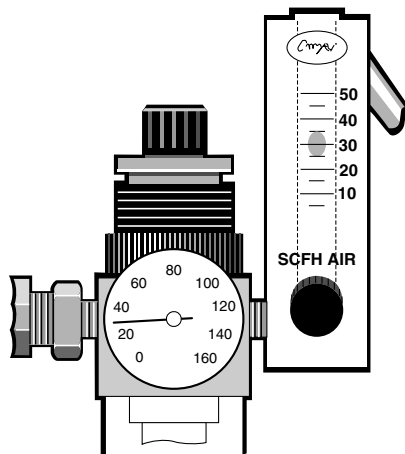
If your spectrometer is purged but you don’t have the Smart Purge option, make sure the pressure regulator is set between 20 and 40 pounds per square inch (psi) and the flowmeter reads approximately 30 standard cubic feet per hour (scfh). The settings for systems equipped with Smart Purge are given in the next section; read this section first.



If you need to adjust the flow rate, or if your application requires a different flow rate, follow the instructions in “Setting the purge gas controls” in the “Setting up experiments” book in Spectrometer Help Topics.

Warning

Never use a flammable gas to purge the spectrometer. The purge gas must be free of moisture, oil, carbon dioxide and other reactive or infrared-absorbing materials. Use dried air or nitrogen to purge the spectrometer. Other gases, even inert gases such as argon, can damage the spectrometer and should never be used for this purpose. ▲



We recommend that you leave the purge on at all times. This keeps the spectrometer free of undesirable gases, protects the optics and improves the system’s thermal stability.



In Spectrometer Help Topics view “Installing optional hardware” for information about installing purge equipment and setting the controls for the first time. “Maintaining your spectrometer” contains information about inspecting and replacing the purge filter. In the Spectrometer Tour (available through Getting Started) view “Sample compartment” for information about using Smart Purge.

Smart Purge settings

The Smart Purge option increases the purge gas flow rate when you install or remove samples. If you have this option, set the pressure regulator to 80 psi. The auxiliary tank may be required depending on the flow rate supplied by your purge gas source. See the following table for details.

<i>Flow Rate*</i>	<i>Tank Required?</i>	<i>Comments</i>
less than 50 scfh	yes	Some purge gas and pure air generators provide a flow rate of less than 50 scfh.
50-99 scfh	optional	Using the tank will improve performance.
100 scfh or greater	no	A flow rate of 100 scfh gives the best results.

* Flow rates greater than 50 scfh cannot be measured with the flowmeter installed by Thermo Electron. See your air dryer manual or contact the department that maintains your purge equipment if you don't know the flow rate of the purge gas source.



You can use OMNIC to set the duration of increased purge flow. In OMNIC Help Topics find “purge” in the Index and go to “Setting Smart Purge.”

Checking the desiccant



Check Desiccant...

If your spectrometer is sealed and desiccated, a bag of desiccant is located under the beamsplitter compartment cover. The desiccant protects the beamsplitter and other optical components by reducing the amount of water vapor inside spectrometer. See “Checking and changing desiccant” in the “Maintaining your spectrometer” book in Spectrometer Help Topics if you need to change the desiccant.

If your spectrometer is in use, check the humidity level inside it monthly (more often in very humid climates) by clicking the Check Desiccant button on the Diagnostic tab of the Experiment Setup dialog box. If the level exceeds the factory-specified limit, a message informs you. Be sure to change the desiccant so that the optics will be protected.



If your spectrometer is in storage, check the round, blue indicator on the desiccant holder under the beamsplitter compartment cover monthly. Change the desiccant if the indicator has turned pink. Keep all covers closed tightly while the spectrometer is in storage.

Note

The Check Desiccant button measures humidity more accurately than the indicator. For this reason you should rely on the button to monitor the performance of the desiccant when the spectrometer is in use. Rely on the indicator only when the spectrometer is in storage. ▲



See “Ordering parts” in Spectrometer Help Topics to find the part number for ordering desiccant bags.

Turning on the system components

We recommend that you keep your spectrometer on at all times, unless the building is subject to power outages or you need to perform a service or maintenance procedure. Leaving the system on keeps it stable and gives you the most consistent results. If you must turn the spectrometer off, allow it to stabilize for at least 15 minutes (one hour for best results) before collecting spectra.

Follow these steps to turn on the system components:

- 1. If the external power supply is not already connected, connect it.**



In the Spectrometer Tour (available through Getting Started) view “Connecting to AC power” in the “Powering up” unit for information about connecting the power supply.

- 2. Turn on any accessories you plan to use.**

This includes accessories such as a gas chromatograph, a GC interface or an infrared microscope.

Warning

Always follow the safety precautions described in this manual and in the *Spectrometer Safety Guide* that came with your system. ▲

- 3. Turn on the spectrometer by pressing the power switch (I/O) on the external power supply to I.**

When you turn on the spectrometer, the four status indicators—Power, Scan, Laser and Source—flash in various sequences as the system runs through its diagnostic routines. When the routines are finished, the Power, Laser and Source indicators stay lighted. The Scan indicator flashes with each scan of the interferometer.

After you turn on the spectrometer, let it stabilize for at least 15 minutes (one hour for best results) before collecting spectra.

See “Turning on the spectrometer power” in the “Spectrometer Basics” chapter if you need more information.

4. Turn on the printer and then the computer.

Turn on the printer and computer as explained in the documentation that came with those components.

Reverse the order given in the preceding procedure when you turn off system components:

1. Turn off the computer.
2. Turn off the printer.
3. Turn off the spectrometer.
4. Turn off the accessories.

Cooling the detector



▲ Warning

Some detectors, such as an MCT or InSb detector, require cooling with liquid nitrogen. In Spectrometer Help Topics view “Cooling a detector” in “Setting up experiments” for instructions.

Liquid nitrogen is extremely cold and therefore potentially hazardous. Avoid contact with skin. Wear protective clothing and follow standard laboratory safety practices to prevent injury. Liquid nitrogen can be hazardous if handled in an insufficiently ventilated room. ▲

After you fill the detector dewar with liquid nitrogen (the dewar holds about 750 mL), allow the detector to cool at least 20 minutes before collecting spectra.

Starting OMNIC

Follow these steps to start OMNIC:

1. Start your Windows software.

Depending on the version of Windows you are using, you may be required to enter your user name and password. Enter the information when you are prompted.

2. Double-click the OMNIC shortcut on the Windows desktop.



Alternatively, you can click the Start button on the Windows taskbar, point to Programs (All Programs in Windows XP), point to the Thermo Nicolet folder, and then click the OMNIC program.

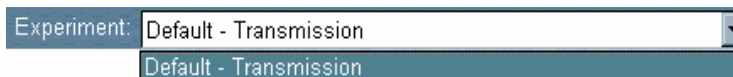
Depending on how the program has been configured, dialog boxes may appear asking for a user name and password. Type the requested information and then choose OK.



The OMNIC window appears. This window is described in the next chapter and in the “Getting Started With OMNIC” tutorial available through Getting Started in the Help menu.

Selecting an experiment

The parameter settings for collecting spectra are stored in experiment files. You load the settings you wish to use when you select an experiment from the Experiment drop-down list box below the OMNIC menu bar (see the example below).



A number of experiments are included with OMNIC for performing a wide variety of data collections. You can open these experiments by choosing Open in the Experiment Setup dialog box. Experiment Setup is available in the toolbar and in the Collect menu. You can also use Experiment Setup to set up and save your own experiments, or to check or change the parameter settings after you select an experiment.

If you install a Smart Accessory , the correct experiment is selected automatically (or a list of appropriate experiments is made available for your selection).

In the tutorial in the next chapter the Default - Transmission (or Transmission E.S.P.) experiment is used. You will probably find that this experiment is suitable for most of your applications.

If you want to check or change the parameters after selecting an experiment, use Experiment Setup in the Collect menu.

You are now ready to collect spectra.



If you have not used the system before, you can learn how to perform an experiment by viewing the “Collecting a Spectrum” tutorial (available through Learning OMNIC in the Help menu) or by using the tutorial in the next chapter of this manual. If you need to change a source or detector, view “Replacing the source” or “Replacing the detector” in the “Servicing your spectrometer” book in Spectrometer Help Topics.

Note The most commonly used hardware configuration for mid-IR experiments includes a KBr beamsplitter, an ETC source and a DTGS detector. You may need to change the settings of the example experiment if your hardware configuration is different. ▲



Your First Experiment

This chapter will get you started collecting spectra with your spectrometer and working with the data using OMNIC. You will learn how to do the following things:

- Open a configuration.
- Select an experiment.
- Collect a sample spectrum.
- Save the spectrum.
- Convert the spectrum to other units.
- Label a peak in the spectrum.
- Verify the composition of the sample by comparing the spectrum with spectra in a QC library.
- Create a user library.
- Add the spectrum to a user library.
- Create and print a report containing the spectrum.



You can learn all these things and more by running the on-line tutorials provided with OMNIC. Start with the Spectrometer Tour and Getting Started With OMNIC (available through Getting Started).

Follow the instructions in the preceding chapter to prepare the system and start OMNIC before using this chapter.

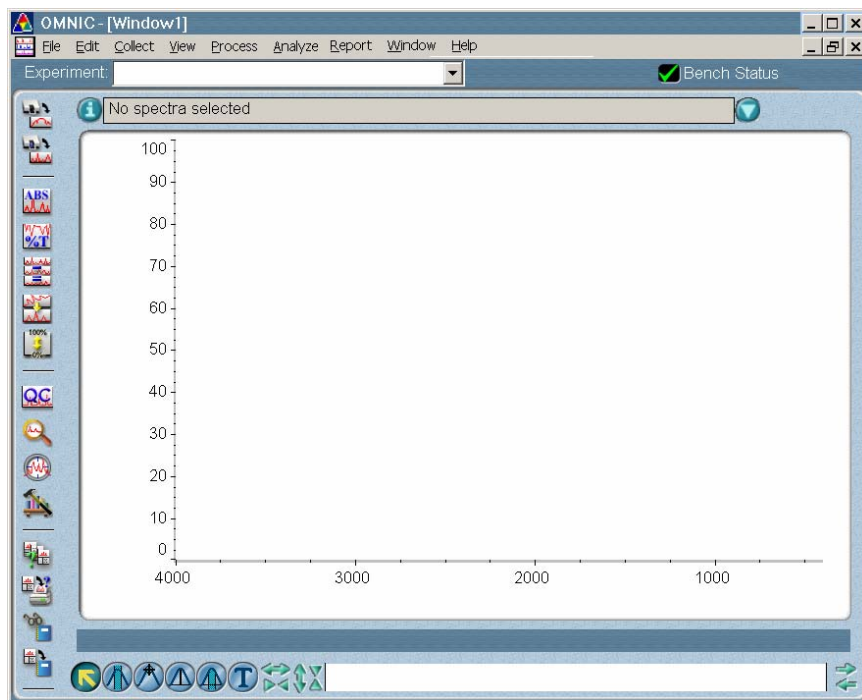
Note If you have a dedicated system (such as an ECO/RS) that normally uses a software package other than OMNIC, skip this chapter. See the special documentation that came with your system for instructions for using that software. If you need information about using the spectrometer, see the chapters that follow this one. ▲

The OMNIC window

The large window that appears on the screen when you start OMNIC is called the OMNIC window.

Spectral window

Within the OMNIC window is a spectral window, which you can use to display and manipulate spectra. When a spectrum is displayed in a spectral window, you can use OMNIC commands to perform operations on it. For example, you can change the spectrum's format or search it against a spectral library to identify it.



Menu bar

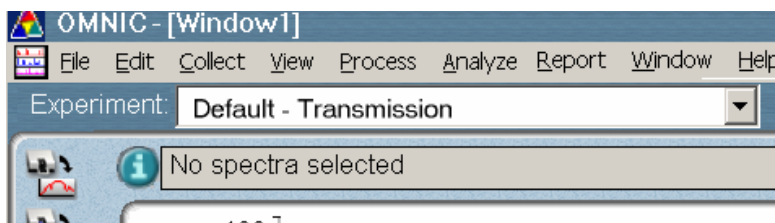
Below the title bar is the menu bar, which contains all of the OMNIC menu names. (Depending on which optional software you purchased, the menu names in your menu bar may be somewhat different from those shown.) The menus are arranged in an order that you'll find convenient as you use the software. All of the menu commands are explained in detail in the on-line tutorials or the OMNIC Help system.



Experiment drop-down list box



Below the menu bar is the Experiment drop-down list box. It lists all of the experiment files you have opened, plus the default experiment file and an experiment file for any Smart Accessory module you have installed. By selecting an experiment with this feature, you can quickly set the software parameters for the type of experiment you want to perform. You can see the parameter settings for the selected experiment by using Experiment Setup, available in the toolbar or in the Collect menu.



Bench Status indicator

To the right of the Experiment drop-down list box is the Bench Status indicator.



If the indicator is a green check mark, the spectrometer has passed all of its diagnostic tests.



If the indicator is a yellow circle, a cooled detector in the spectrometer has become warm. A message appears explaining the problem and allowing you to access information about correcting it.



If the indicator is a red X, the spectrometer has failed a diagnostic test and requires corrective action. A message appears explaining the problem and allowing you to access information about correcting it.

Note

If you want to view the on-line videos to help troubleshoot a problem, put the spectrometer's Tutorial CD into the computer's CD-ROM drive. ▲

Toolbar

At the left side of the window is the toolbar. (You can use Edit Toolbar in the Edit menu to position the toolbar at the top or right side of the OMNIC window as well. Each button in the toolbar represents a command or other feature. To see the name of the command or feature, point to the button and wait a moment. To initiate the command or feature, click the button with the left mouse button.

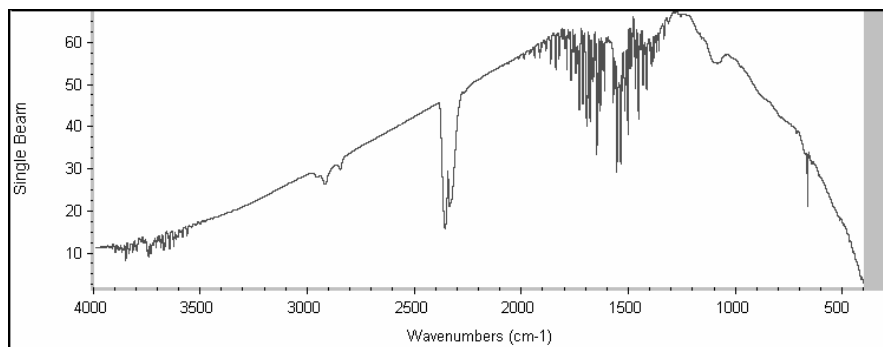


In OMNIC Help Topics find "toolbar" in the Index and go to "Displaying and using a toolbar" for information about using and customizing the toolbar buttons.

Collecting a sample spectrum

A sample spectrum is usually ratioed against a background spectrum. The background spectrum measures the response of the spectrometer without a sample in place. Dividing the sample spectrum by the background—called “ratioing”—removes the effects caused by the instrument and atmospheric conditions so that the peaks in the final spectrum are due solely to the sample.

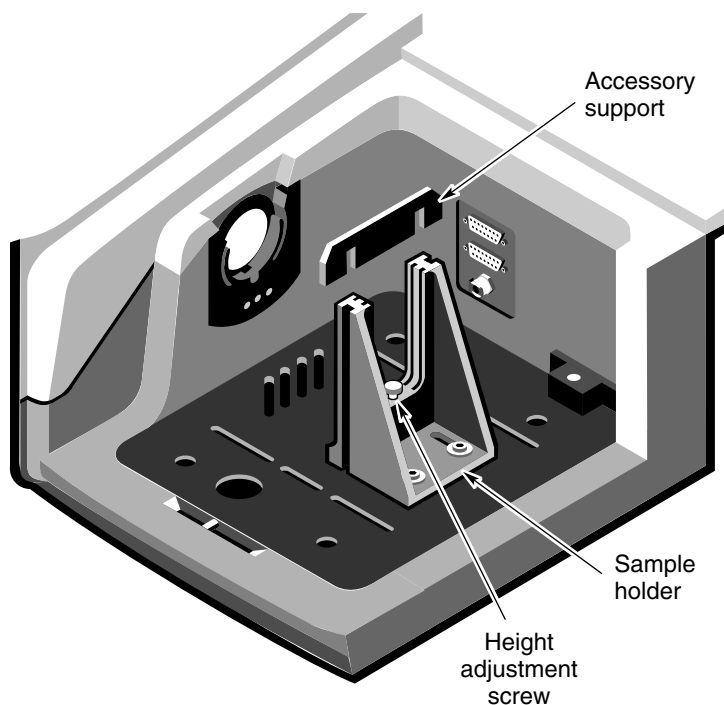
Here is a typical mid-IR background spectrum:



For most applications you don't need to collect a new background spectrum for each sample spectrum if you haven't changed the software parameters. To obtain good results, however, collect a new background regularly, perhaps once every four hours. (You can obtain the best results by collecting a new background for each sample, but this is usually necessary only if you are running quantitative experiments.)

Installing the standard sample holder

If the standard sample holder is not already installed, install it now. The following illustration shows the sample holder in place.



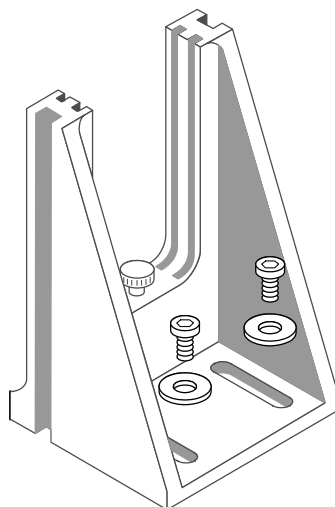
If you are using separate Snap-In™ sample compartment baseplates for different accessories and sample holders, you can quickly switch baseplates to install the sample holder. For information about using Snap-In baseplates, view “Removing the Snap-In baseplate” in “Setting up experiments” in Spectrometer Help Topics.



If your sample holder is mounted on a Smart baseplate, the Transmission E.S.P. experiment is automatically selected when you install the baseplate in the sample compartment.

If your sample holder is not installed on a baseplate, use a flat-blade screwdriver and the slotted screws to attach the holder to a baseplate as shown below. Then install the baseplate in the sample compartment.

If there is a sample in the holder, remove the sample.



To install a sample or filter, slide the sample or filter into one pair of slots. If the accessory support is currently installed in the slot you want to use, remove the support before installing the sample or filter (see the first illustration in this section). Replace the support when you are finished using the slot. *Do not discard the support; it is needed for installing slide-mounted accessories.*

Collecting the sample spectrum

In the data collection procedure that follows, you will collect a background spectrum and then a spectrum of the secondary polystyrene standard that came with your spectrometer. Before collecting the spectra, you will open a configuration that sets a number of software options for this procedure.



You can also learn how to collect spectra by viewing Collecting a Spectrum (available through Learning OMNIC).

Follow these steps:

1. Choose Open Configuration from the File menu.

The Open Configuration dialog box appears listing the available configuration files. Opening one of these files lets you quickly set a number of software options.

2. Select the DEFAULT.CON file and then choose OK.

This file was provided with your OMNIC software for setting the options for this procedure.

3. If it is not already selected, select the Default - Transmission experiment (or the Transmission E.S.P. experiment).

Both of these experiments set the parameters correctly for collecting a polystyrene sample spectrum. The currently selected experiment is shown in the Experiment box near the top of the OMNIC window.

To select the Default - Transmission (or Transmission E.S.P.) experiment, first click the arrow button at the right end of the Experiment drop-down list box. The Default - Transmission (or Transmission E.S.P.) experiment appears in the list.

Select the Default - Transmission experiment by clicking it.



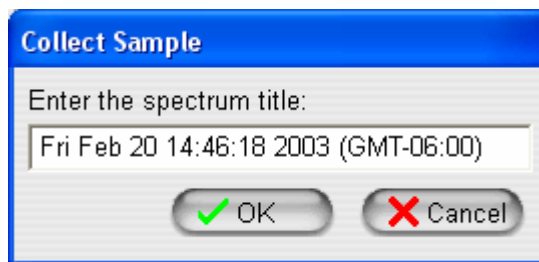
A number of other experiments are provided with OMNIC for performing a wide variety of data collections. You can select these experiments by using the Open button in the Experiment Setup dialog box. After you have selected one of them the first time, the experiment will appear in the Experiment drop-down list for future selection. You can also set up and save your own experiments.

4. **Press the Sample button on top of the spectrometer to start sample data collection.**



You can also click the Collect Sample button in the toolbar or choose Collect Sample from the Collect menu.

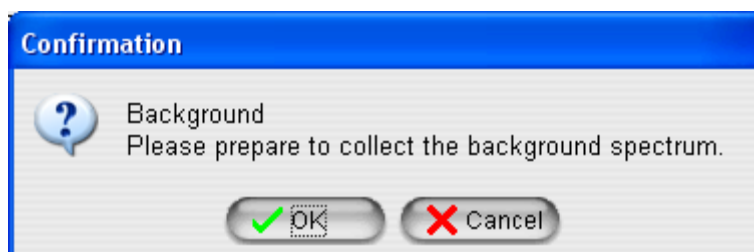
The Collect Sample window appears and then a dialog box showing the default title for the sample spectrum:



5. Type a title in the text box and choose OK, or just press the OK/Enter button on top of the spectrometer to accept the default.



Since the experiment you are using specifies that a background be collected before every sample, a message appears asking you to prepare to collect a background spectrum:



This means that you need to remove any sample from the sample holder so that the beam path is clear. When you then collect a background spectrum, the result is a measurement of the response of the spectrometer alone; that is, without absorptions due to a sample.

6. Look through the sliding door to make sure there is no sample in the sample holder and then press the OK/Enter button to start data collection.

If there is a sample in the sample holder, remove it before pressing the button:

If your spectrometer is purged but does not have the Smart Purge option...

Open the sliding door, remove the sample, close the sliding door and then wait 1 minute before choosing OK.

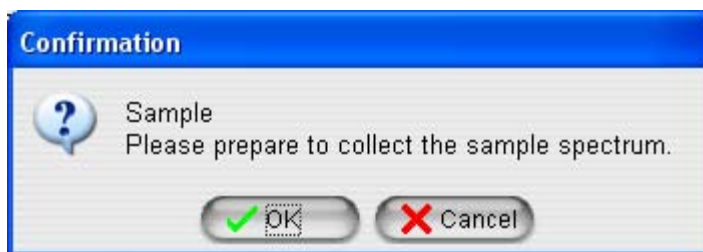
If your spectrometer has the Smart Purge option...

Open the sliding door, remove the sample and then slide the door until it is open about 1 cm. When you hear the purge flow rate return to normal, close the door all the way and choose OK.

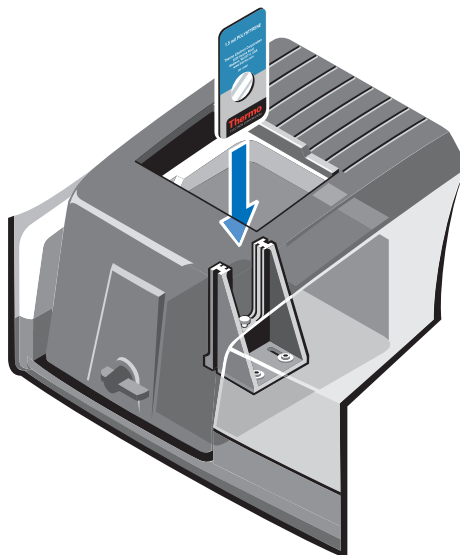
If your spectrometer is sealed and desiccated...

Open the sliding door, remove the sample, close the sliding door and then choose OK.

A background spectrum appears in the Collect Sample window. The spectrum is updated as more data are collected. When all the data have been collected, a message appears asking you to prepare to collect the sample spectrum:



7. **Install the thin film polystyrene sample labeled “Secondary Polystyrene Standard: 1.5 mil Polystyrene” through the sliding door, wait if necessary (see the instructions below) and then press the OK/Enter button.**



If your spectrometer is purged but does not have the Smart Purge option...

Open the sliding door, install the sample, close the sliding door and then wait 1 minute before choosing OK.

If your spectrometer has the Smart Purge option...

Open the sliding door, install the sample and then slide the door until it is open about 1 cm. When you hear the purge flow rate return to normal, close the door all the way and choose OK.

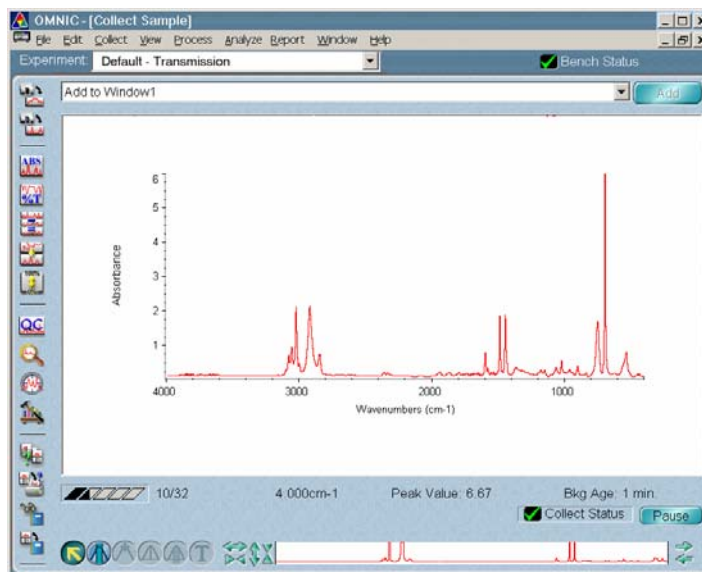
If your spectrometer is sealed and desiccated...

Open the sliding door, install the sample, close the sliding door and then choose OK.



For more information about installing samples, view “Installing samples” in the Spectrometer Tour (available through Getting Started).

As data are collected, the sample spectrum in the Collect Sample window is updated. Here is an example:



The progress of the collection is indicated by the gauge below the spectrum.



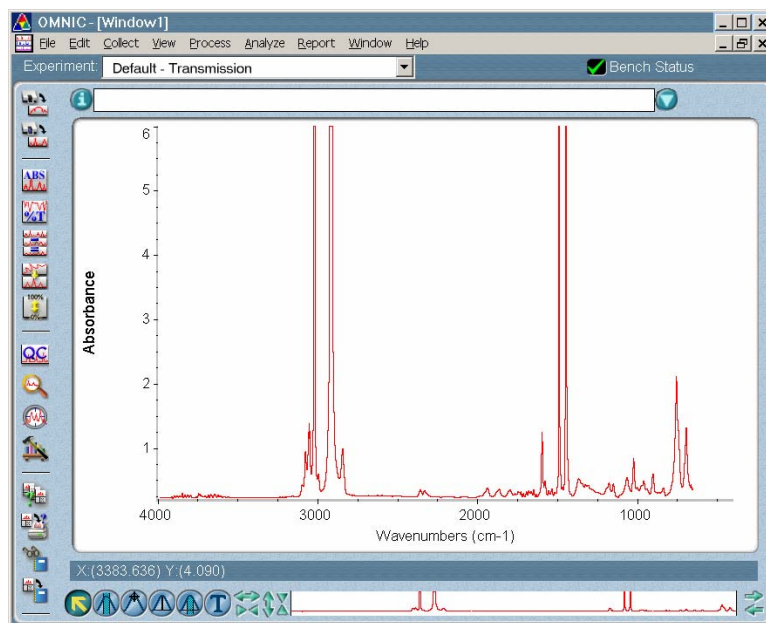
The number of scans collected so far and the total number of scans for the collection are displayed to the right of the gauge.

When data collection is finished, a message may appear, asking whether to add the spectrum to a spectral window.

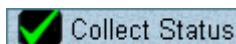
Note If Collect To A New Window is selected in the Collect options (available through Edit Options in the Edit menu), this message does not appear since the spectrum is placed into a new spectral window automatically. ▲

8. Press the OK/Enter button to add the sample spectrum to the spectral window.

Choosing No would end the procedure without saving the spectrum. Choosing More Scans would return you to the Collect Sample window, allowing you to collect more scans with the More button. Choosing View Collect Status would display information about the collection, including any problems that occurred (see the next section).



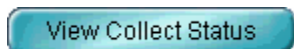
How do I know if my spectrum is good?



The Collect Status indicator near the bottom of the Collect Sample window shows the status of the collection. When the indicator is a green check mark, it shows that the spectrum has passed all of the selected spectral quality checks made so far. After the collection is finished and the indicator is a green check mark, you can add the spectrum to a spectral window (if it is not added automatically).



If you ever have a problem with data collection while one or more quality checks are turned on, the Collect Status indicator may change. If the indicator is a yellow circle, the spectrum has failed a spectral quality check (a measured value was not within the allowed range), but it is not serious enough to stop the collection. If the indicator is a red X, there is a problem with the quality of the spectrum. After correcting the problem, collect the spectrum again.



To view information about the collection, including a list of any problems that have occurred, click the Collect Status indicator during or after the collection. You can also click the View Collect Status button in the message that may appear when the collection is finished (see step 7 of the procedure in the preceding section). For each listed problem, an Explain button is provided to let you access troubleshooting information.

Saving the spectrum

You can save your spectrum on the hard disk by using either of two commands in the File menu: Use Save when you want to save a spectrum using the current filename and path. Use Save As when you want to save a spectrum using a new filename or path.

Follow these steps to save the spectrum you just collected:

- 1. Select the polystyrene spectrum by clicking it.**
- 2. Choose Save As from the File menu.**

The Save As dialog box appears.

- 3. Type a descriptive name (such as POLY.SPA) following the directory path in the File Name box.**

Here is an example:

C:\My Documents\OMNIC\Spectra\POLY.SPA

The text can be either upper or lower case. The default directory path for saving files is determined by the settings on the File tab of the Options dialog box, available through Options in the Edit menu.

- 4. Choose OK.**

If you typed a filename that already exists in the directory, a message appears asking whether to replace the existing file. Choose No and then use a different filename to save the spectrum.

Converting the spectrum's units

The sample spectrum you collected is in absorbance units. Since many of OMNIC's data manipulation commands work best on spectra in absorbance units, it is often useful to convert a spectrum to absorbance by using the Absorbance command. In this example you will convert the spectrum to % transmittance and then back to absorbance.

- 1. Select the spectrum by clicking it.**
- 2. Click the % Transmittance button in the toolbar.**

You can also choose % Transmittance from the Process menu.



The spectrum is converted to % transmittance units:



The Process menu allows you to convert spectra to several other units as well. These units are discussed in detail in the OMNIC on-line Help system. In OMNIC Help Topics find “converting spectrum” in the Index and go to the topic that deals with the units you are interested in.

3. Click the Absorbance button in the toolbar to return the spectrum to absorbance units.

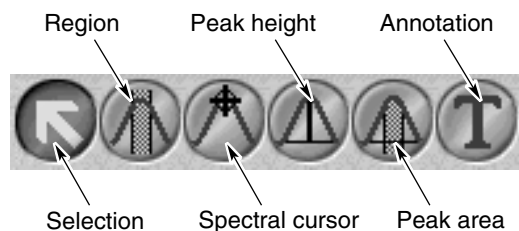
You can also choose Absorbance from the Process menu.



In the next section, you will label a peak in the absorbance spectrum using the annotation tool.

Labeling a peak with the annotation tool

The palette contains six tools that let you select a spectrum or spectral region, change how spectra are displayed in a spectral window, find the height or area of a peak, or label a peak. The names and appearance of the palette tools indicate their functions.



Only one tool can be used at a time. To use a tool, first select it by clicking it. A tool remains selected until you select another tool.

When you use a tool, the readout above the palette may display information for the tool operation, such as the X and Y values of the pointer location or the limits of the selected spectral region. Here is an example of X and Y values displayed in the readout when the selection tool is selected and the pointer is within the spectral display:

X: (3427.273) Y: (2.504)

Follow these steps to label a peak in the polystyrene spectrum:

1. Select the annotation tool by clicking it.



The annotation tool lets you label peaks with their frequency locations (X values) or other information.

When the annotation tool is selected and you move the pointer into the spectral display, the pointer looks like this:

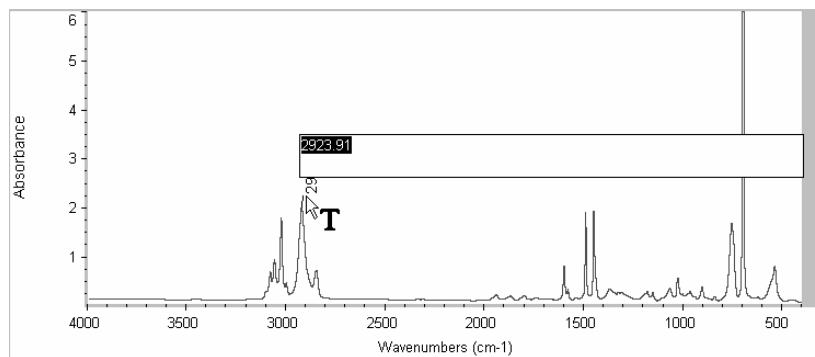


You can label a peak by clicking above it with the annotation tool. This displays the label text above the peak with a line connecting the label to the peak. The text is selected so that you can immediately edit it. When you press Enter, the label appears in its final form.

You can more accurately locate the top of a peak by holding down the Shift key when you click near the peak.

2. Label a prominent peak by holding down the Shift key and clicking a little above the peak.

The label appears. Here is an example:



3. Press Enter to accept the label text.

You could also perform other operations on the label using the annotation tool. To modify a newly created label, edit the selected text before pressing Enter. To modify an existing label, click it and then type a new label and press Enter. To delete an existing label, click it and then press the Delete key.



In OMNIC Help Topics find “tool, annotation” in the Index and go to “Annotation tool” for more information about the annotation tool.

In the next section, you will compare the spectrum with the spectra in a QC library to verify the composition of the sample.

Verifying the composition of the sample

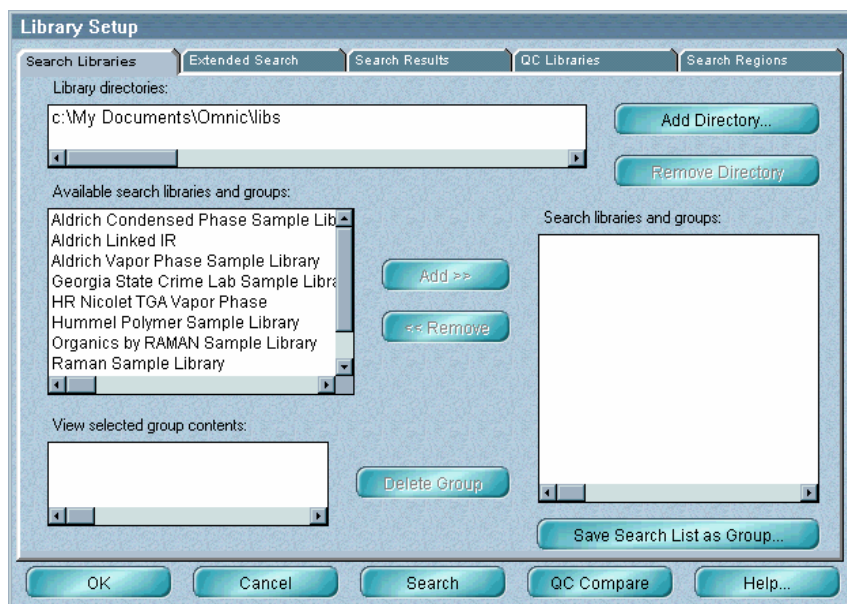
You can verify the composition of your polystyrene sample by automatically comparing the collected spectrum with the spectra in a QC (Quality Control) library. The software compares the sample spectrum with reference spectra in the appropriate category in the library and then tells you whether the sample matches a library spectrum.

Note If you were unsure of the composition of the sample, you could perform a “spectral search” using a search library. In that case, the software would search the library and then display a list of the library spectra that best matched the unknown spectrum. ▲

Follow these steps to perform a QC comparison:

1. **Select the spectrum by clicking it.**
2. **Choose Library Setup from the Analyze menu.**

The Library Setup dialog box appears with the Search Libraries tab displayed.



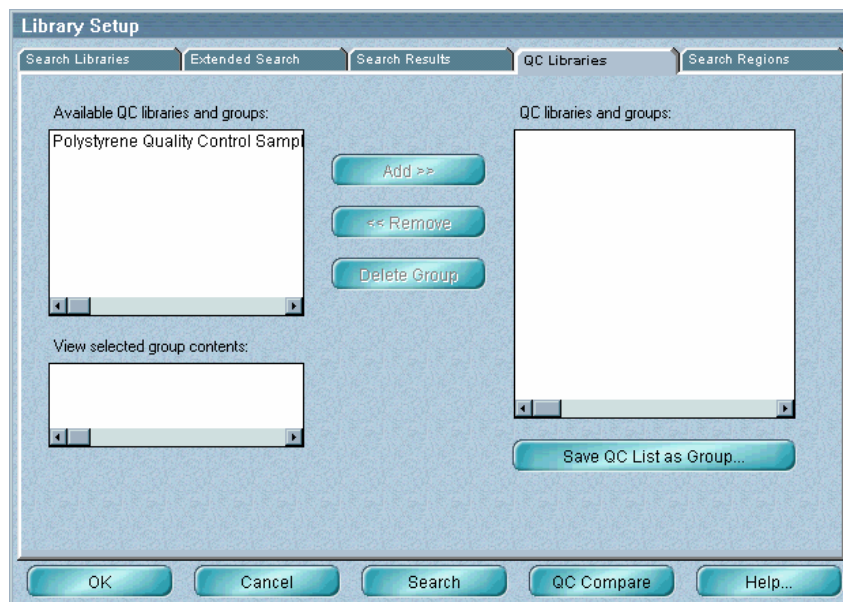
The Library Directories box lists the directories that are currently being used for spectral searches and QC comparisons. All the libraries in the listed directories are available for your QC comparison.

3. Add the LIBS directory (within the OMNIC directory) to the list of directories if it is not already in the list.

This is the directory that contains the provided Polystyrene Quality Control Sample library. To add the directory to the list, choose Add Directory. In the dialog box that appears, locate and select the LIBS directory, and then choose OK.

4. Click the QC Libraries tab to display the available QC libraries.

The available QC libraries appear in the Available QC Libraries And Groups box.



The libraries listed in the QC Libraries And Groups box are the libraries with which your spectrum will be compared.

5. Add the Polystyrene Quality Control Sample library to the comparison list.

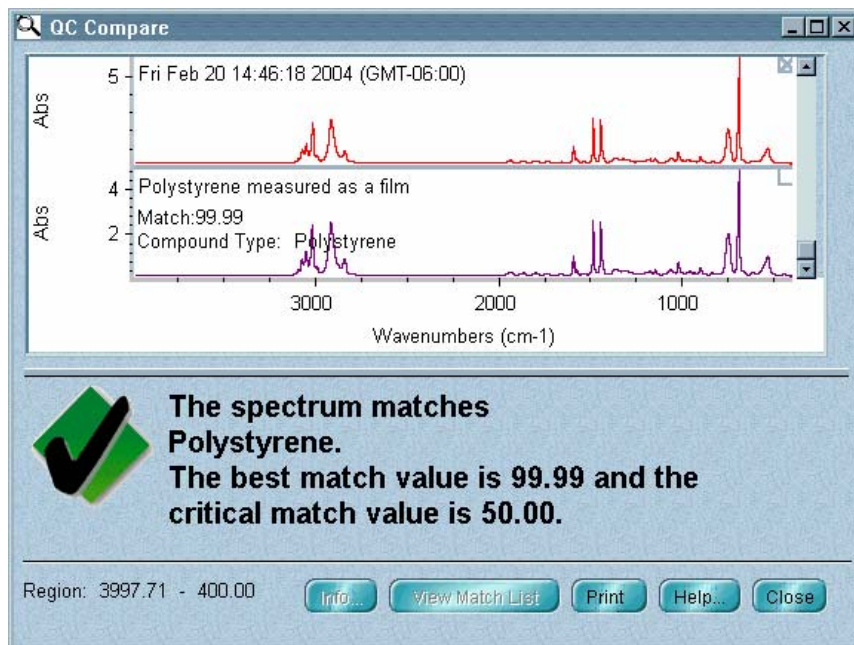
To do this, click the appropriate library name in the Available QC Libraries And Groups box, and then click the Add button.

6. Choose QC Compare in the Library Setup dialog box to start the comparison.

You can also close the Library Setup dialog box and begin a QC comparison at any time by choosing QC Compare from the Analyze menu.

When you begin a comparison, the QC Compare window appears. At the bottom of the window a gauge shows the progress of the comparison.

When the comparison is finished, the sample spectrum and the library spectrum that best matches it are displayed in panes in the upper portion of the window. Comments about the comparison appear in the lower portion of the window. Here is an example:



7. Close the QC Compare window by choosing Close.



In OMNIC Help Topics find “QC comparison” in the Index and go to “Performing a QC comparison” if you want more information about comparing sample spectra with QC libraries.

Creating a user library

OMNIC's Library Creation Wizard makes it easy to create your own spectral libraries. Creating your own library lets you customize the information in the library depending on your needs. You set the library parameters (including the resolution and spectral range) and specify which checks and corrections to perform. The wizard leads you step by step through the process.

If you are using OMNIC, start the Library Creation Wizard by choosing Library Manager from the Analyze menu and then clicking the Create Library button on the Library Names tab.



In OMNIC Help Topics find “library, creating” in the Index and go to the “Creating a user library” topic for more information.

Adding a spectrum to a user library

Once you have created a user library, you can use the library to store spectra you have collected. To do this, select the spectrum and then choose Add To Library from the Analyze menu. To move a copy of a spectrum you have collected from one user library into another, use Library Manager in the Analyze menu.

Note

You cannot add spectra to a commercial library, nor can you move copies of commercially collected reference spectra into libraries you create. ▲



In OMNIC Help Topics find “adding, spectrum to user library” in the Index and go to the “Adding a spectrum to a user library” topic or the “Adding user library spectra to another user library” topic for more information.

Creating and printing a report



OMNIC makes it easy to create and print a report containing the results of your work. Follow the steps below.

You can also view the “Creating Reports” tutorial (available through Learning OMNIC in the Help menu) to learn how to create and print reports and add them to report notebooks.

1. Choose Template from the Report menu.

A dialog box appears allowing you to select a report template for the report.

2. Select the report template file named QCCOMP.RPT.

This file contains a report template specially set up for this procedure. The template has items for the spectral window, spectrum time, title and comments, and QC comparison results.

When you select the template file, a preview image of the template appears at the right. This feature allows you to see what different templates look like so that you can pick one with the items you need for your report. You can view the image as a graphical layout by selecting the Layout option. This shows you how the printed report will look on paper. You can also view the image with template items labeled by selecting the Description option. This lets you identify items that are too small to be seen clearly.

3. Choose Select to make the example template the current template for printing reports.

When you print your report, OMNIC will automatically fill in the items in the template with the appropriate information and images. For example, if an item in the template is linked to the active spectral window, the contents of that window are included when you print the report.

You can create your own report templates by using the Create button, or you can modify one of the existing templates whenever you want to design a new template. Save the template with a new name after you make your changes.

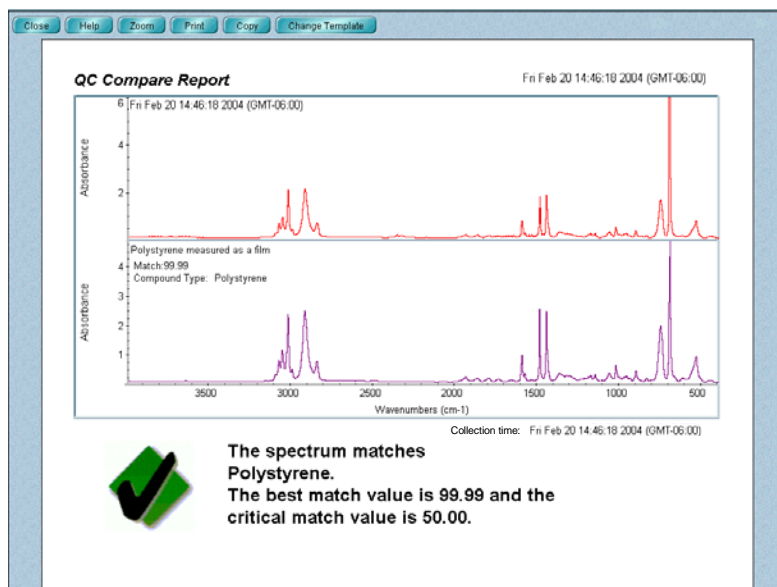


In OMNIC Help Topics find “report template, selecting” in the Index and go to “Selecting, editing or creating a report template” for more information about using reports.

4. Choose Preview/Print Report from the Report menu.

A preview of the report appears showing the report items filled in with information about your spectrum. Your report should look similar to this:

You can click the Zoom button to see an enlarged image of the report.



The preview lets you check the content of the report before printing it.

- 5. If you have a printer connected to the computer, choose Print to print the report.**

The Print dialog box appears allowing you to set some parameters that affect printing.

- 6. Choose OK.**

The report is printed on your system printer.



Spectrometer Basics

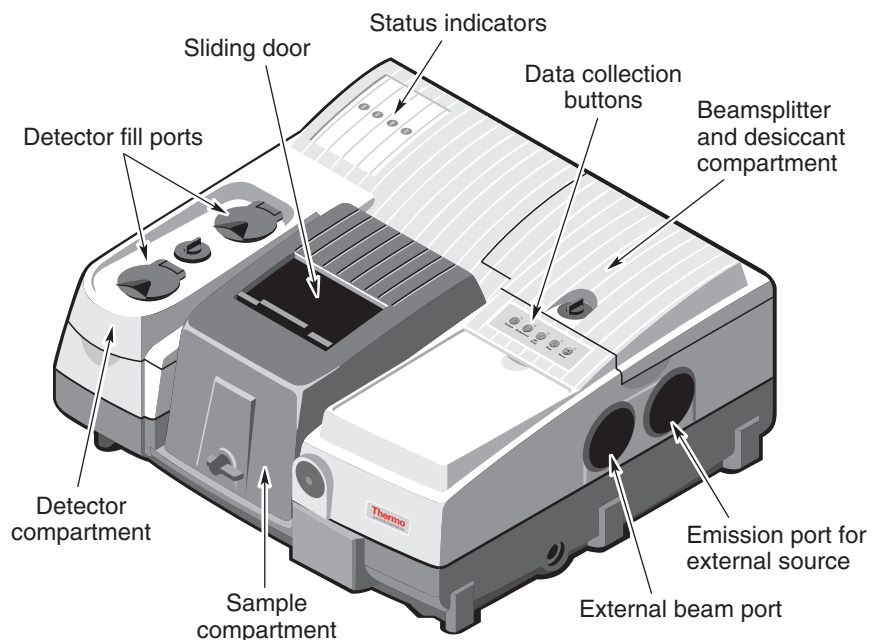
This chapter describes the major components of your Nicolet 4700 or Nicolet 6700 spectrometer, including the light source, beamsplitter and detector. It then explains what you will need to know before collecting data in various spectral ranges.



In the Spectrometer Tour (available through Getting Started) view “From the front,” “The back panel” and “Inside the spectrometer” for complete descriptions of your spectrometer’s internal and external components.

Spectrometer components

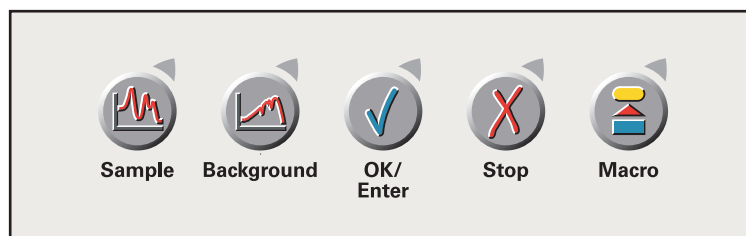
The following illustration identifies some major components visible on the outside of a typical Nicolet 6700 spectrometer. (Some components may not be present on your spectrometer.)



For more information about the Auxiliary pass-through connectors, see the “How to cable an accessory” section of the “Accessories” chapter.

Using the data collection buttons

The buttons on the top of the spectrometer let you quickly perform some basic operations with the spectrometer without using your keyboard or mouse. (OMNIC must be running.)





Press the Sample button to collect a sample spectrum. This has the same effect as choosing Collect Sample from the Collect menu. In OMNIC Help Topics find “spectrum” in the Index and go to “Collecting a sample spectrum” for more information.



Press the Background button to collect a background. This has the same effect as choosing Collect Background from the Collect menu. In OMNIC Help Topics find “background spectrum” in the Index and go to “Collecting a background spectrum” for more information.



Press the OK/Enter button to respond affirmatively—for example, to a software prompt—during data collection. This has the same effect as choosing OK (or other affirmative response, such as Yes) within the software.

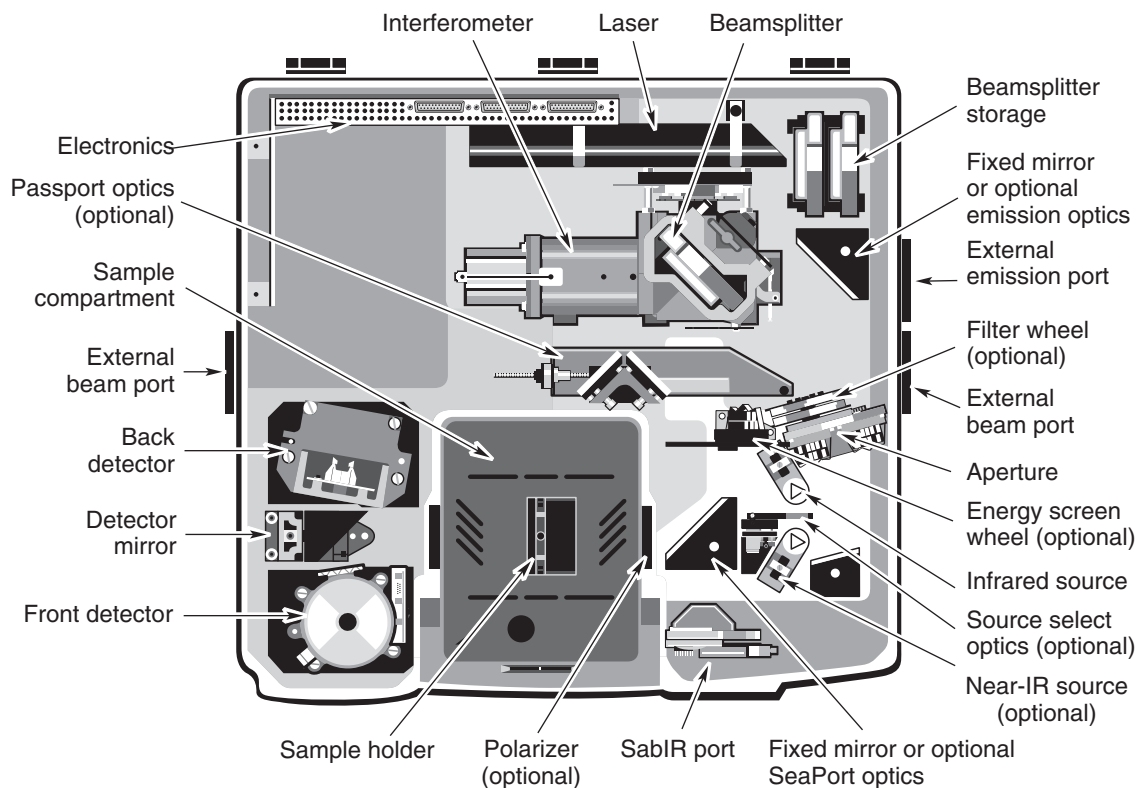


Press the Stop button to respond “Cancel” or “No” to a software prompt during data collection. This has the same effect as choosing Cancel or No within the prompt.



Press the Macro button to start a macro you have specified with the Macro for Macro button field on the Advanced tab in Experiment Setup. In OMNIC Help Topics find “macro” in the Index and go to “Specifying a macro for the Macro button” for more information.

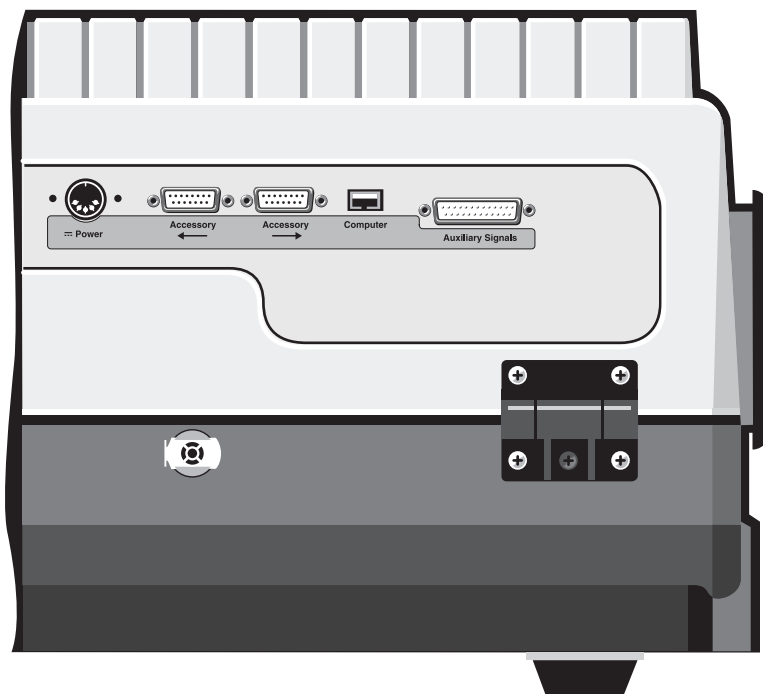
What's inside? The illustration below shows a top view of the optical layout of a typical Nicolet 6700 spectrometer with covers removed to reveal components. (Some components may not be present in your spectrometer.)



In the Spectrometer Tour (available through Getting Started) view “Inside the spectrometer” for complete descriptions of your spectrometer components.

What is on the rear panel?

The rear panel includes a power connector, right-and left-side accessory connectors, computer connector (USB 2.0, not a hub), auxiliary signals connector, and purge gas input. You may also find optional Auxiliary and/or dual channel connectors on the rear panel.



Danger

Avoid shock hazard. Always power off the spectrometer and disconnect the power supply from the wall outlet or power strip before disconnecting the power supply from the back of the spectrometer. •



In the Spectrometer Tour (available through Getting Started) view “The back panel” for complete descriptions of the rear panel components.

Turning on the spectrometer power



Follow these steps to turn on the spectrometer power:

- 1. If the external power supply is not already connected, connect it.**

In the Spectrometer Tour (available through Getting Started) view “Connecting to AC power” in the “Powering up” unit for information about connecting the power supply.

- 2. Turn on any accessories you plan to use.**

This includes accessories such as a gas chromatograph, a GC interface or an infrared microscope.

Warning

Always follow the safety precautions in this manual and in the *Spectrometer Safety Guide* that came with your system whenever you use the spectrometer. ▲

- 3. Turn on the spectrometer by pressing the power switch (I/O) on the external power supply.**

When you turn on the spectrometer, the four status indicators—Power, Scan, Laser and Source—flash in various sequences as the system runs through its diagnostic routines. When the routines are finished, the Power, Laser and Source indicators stay lighted. The Scan indicator flashes with each scan of the interferometer.

Note

After you turn on the spectrometer, let it stabilize for 15 minutes (one hour for best results) before collecting data. Leave the spectrometer on at all times, unless the building is subject to power outages or you need to perform a service or maintenance procedure. Leaving the spectrometer on increases stability and consistency of performance. ▲

- 4. Turn on the printer and then the computer.**

Reverse the order given in the preceding procedure when you turn off system components:

1. Turn off the computer.
2. Turn off the printer.
3. Turn off the spectrometer. (Press the power switch on the external power supply to **O**.)
4. Turn off the accessories.



In the Spectrometer Tour (available through Getting Started) view “Powering up” for complete instructions for turning on your system.

Note The spectrometer enters “stand-by” mode 10 minutes after data collection activity has ceased. This mode continues for 1 hour. After 1 hour, the interferometer stops scanning and the spectrometer enters “sleep” mode. The Scan light stays on continuously. Any data collection activity will cause the interferometer to begin scanning. Exiting OMNIC also activates stand-by mode. ▲

Note If the Power, Laser or Source indicators flash or will not light at all, or if the Scan indicator will not light, the Bench Status indicator will show a red X and troubleshooting tips will appear on the screen. If you cannot resolve the problem by following these tips or by turning the spectrometer power off and then on, contact Thermo Electron at one of the numbers below. Outside the U.S.A. call your local sales or service representative.

Phone: 1-800-642-6538 (U.S.A.) or
+608-273-5015 (worldwide)

Fax: +608-273-6883 (worldwide)

E-mail: techsupport.analyze@thermo.com

World Wide Web: <http://www.thermo.com/spectroscopy> ▲

Using a light source

The Nicolet 4700 comes with a single infrared light source. The Nicolet 6700 is available with a single internal source or with optional dual sources. If your spectrometer does not have the dual-source option, you will need to change sources in order to use a different internal source.



In Spectrometer Help Topics view “Installing a new source” in “Setting up experiments” if you need to install or change a source.



Caution

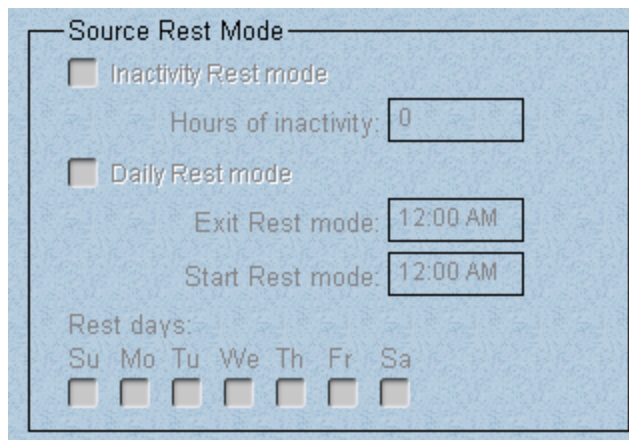
Even after the spectrometer is turned off, the external housings of working IR sources remain hot for up to 15 minutes. To avoid being burned, allow the source to cool before touching it. ▲

The ETC infrared source can be operated in the three modes of operation described below.

Normal mode – In this mode the temperature of the source is maintained at an optimal level for normal spectral data collection. This improves the consistency of your spectral data by ensuring that the infrared energy level reaching your samples is constant. The source operates in Normal mode unless you configure it to enter Turbo or Rest mode at specific times or the spectrometer is in sleep mode.

Turbo mode – Use this mode if you are analyzing a sample, such as a thick film, that requires greater infrared energy. This increases the output of the source, especially in the frequency range around 2,500 wavenumbers. To turn Turbo mode on or off, use the Source parameter on the Bench tab of the Experiment Setup dialog box, available through Experiment Setup in the Collect menu. So long as you are collecting data, the source remains in Turbo until you turn that mode off. Whenever the spectrometer is in stand-by mode, the source returns to Normal mode. When the spectrometer enters sleep mode, the source shifts into Rest mode. This extends the life of your source. In OMNIC Help Topics find “source” in the Index and go to “Specifying the source type” for details.

Rest mode – Rest mode lowers the temperature of the source so that its life is extended. The source automatically shifts into Rest mode when the spectrometer moves into sleep mode. You can configure the source to enter Rest mode at specific times.



The screenshot shows a configuration window titled "Source Rest Mode" with a light blue background. It contains the following elements:

- An unchecked checkbox labeled "Inactivity Rest mode".
- A text field labeled "Hours of inactivity:" containing the value "0".
- An unchecked checkbox labeled "Daily Rest mode".
- A text field labeled "Exit Rest mode:" containing the value "12:00 AM".
- A text field labeled "Start Rest mode:" containing the value "12:00 AM".
- A section labeled "Rest days:" with seven checkboxes corresponding to the days of the week: Su, Mo, Tu, We, Th, Fr, and Sa. All checkboxes are currently unchecked.

When you resume data collection activity, the source automatically re-enters Normal mode. In OMNIC Help Topics find “source” in the Index and go to “Extending the life of the source with rest mode” for details.

You can switch between different internal sources simply by changing the Source setting on the Bench tab of the Experiment Setup dialog box. This option lets you collect spectra in the mid-IR to far-IR range or in the visible to near-IR range. The spectral range is determined by the source, beamsplitter and detector you are using.

Nicolet 6700 spectrometers with the emission accessory can use an external source, if one is available. The beam from the external source passes through the emission port on the right side of the spectrometer.



In OMNIC Help Topics find “source” in the Index and go to “Specifying the source type” for instructions for using different sources in your spectrometer.

Using beamsplitters and detectors

A number of beamsplitters and detectors are available for use in the Nicolet 4700 and Nicolet 6700 spectrometers. You can change the detector type in either model, but the beamsplitter type can be changed only in the Nicolet 6700. Not all beamsplitters and detectors can be used together. Some detectors can accommodate only a portion of the energy from the source and require changing the aperture size (on a Nicolet 6700) or installing an energy filter. This section explains how to select and optimize the performance of beamsplitters and detectors.



In Spectrometer Help Topics view the appropriate lesson in “Setting up experiments” if you need to install or change a beamsplitter or detector.

Selecting the right beamsplitter and detector

There are two considerations when selecting a beamsplitter-detector combination: compatibility and spectral range. Combinations are considered compatible if they provide a detector signal that is large enough to allow the beamsplitter to be aligned. This does not necessarily mean a particular combination will provide the maximum capable sensitivity range of each component.

The following table shows which beamsplitter-detector combinations perform best and which are compatible.

DETECTOR	BEAMSPLITTER					
	Near-IR			Mid-IR*		Far-IR
	Quartz	CaF ₂	XT-KBr	KBr	CsI	Solid Substrate
DTGS (KBr window)**	X	OK	Best	Best	OK	X
DTGS (CsI window)	X	X	OK	OK	Best	X
DTGS (PE window)	X	X	X	X	OK	Best
MCT-A	OK	OK	Best	Best	OK	X
MCT-B	OK	OK	Best	Best	OK	X
InSb	OK	Best	OK	X	X	X
PbSe	OK	Best	OK	X	X	X
Si	Best	OK	X	X	X	X
PbS	OK	Best	X	X	X	X
InGaAs	OK	Best	OK	X	X	X

Best = Optimum beamsplitter-detector combination.

OK = Compatible beamsplitter-detector combination.

X = Incompatible beamsplitter-detector combination.

* A ZnSe beamsplitter may also be used as a mid-IR beamsplitter in extremely humid environments.

** Valid for room temperature and thermoelectrically cooled versions.

The next table lists the spectral ranges of compatible beamsplitter-detector combinations.

<i>Light Range</i>	<i>Beamsplitter</i>	<i>Detector</i>	<i>Spectral Range (cm⁻¹)</i>	<i>Source</i>
visible	quartz	PbSe	13,000 - 2,800*	ETC, white light
		Si [†]	25,000 - 8,600	White light
	CaF ₂	PbSe	13,000 - 2,000*	ETC, white light
		Si [†]	14,500 - 8,600	White light
near-IR	quartz	MCT-A [‡]	11,700 - 2,800*	ETC, white light
		MCT-B [‡]	11,700 - 2,800*	ETC, white light
		InSb ^{‡,§}	11,500 - 2,800*	ETC, white light
		PbSe	13,000 - 2,800*	ETC, white light
		PbS TEC (with SabIR)	10,000 - 4,200*	ETC, white light
		InGaAs	12,000 - 3,800	ETC, white light
	CaF ₂	MCT-A [‡]	11,700 - 1,200*	ETC, white light
		MCT-B [‡]	11,700 - 1,200*	ETC, white light
		InSb ^{‡,§}	11,500 - 1,850*	ETC, white light
		PbSe	13,000 - 2,000*	ETC, white light
		PbS TEC (with SabIR)	10,000 - 4,200*	ETC, white light
		InGaAs	12,000 - 3,800	ETC, white light
	XT-KBr	MCT-A [‡]	11,000 - 600*	ETC, white light
		MCT-B [‡]	11,000 - 400*	ETC, white light
		InSb ^{‡,§}	11,000 - 1,850*	ETC, white light
		PbSe	11,000 - 2,000*	ETC, white light
		DTGS-KBr	11,000 - 375*	ETC, white light
		DTGS TEC	11,000 - 375*	ETC, white light
		InGaAs	12,000 - 3,800	ETC, white light

Continued on next page...

<i>Light Range</i>	<i>Beamsplitter</i>	<i>Detector</i>	<i>Spectral Range (cm⁻¹)</i>	<i>Source</i>	
mid-IR	KBr	DTGS-KBr	7,400 - 350	ETC	
		MCT-A‡	7,400 - 600	ETC	
		MCT-B‡	7,400 - 400	ETC	
		DTGS TEC	7,100 - 350	ETC	
		DTGS-CsI	6,400 - 350	ETC	
	CsI¶	DTGS-CsI	6,400 - 225	ETC	
		MCT-A‡	6,400 - 600	ETC	
		MCT-B‡	6,400 - 400	ETC	
	ZnSe	DTGS-KBr	4,000 - 650	ETC	
		MCT-A‡	4,000 - 650	ETC	
		MCT-B‡	4,000 - 650	ETC	
		DTGS TEC	4,000 - 650	ETC	
		DTGS-CsI	4,000 - 650	ETC	
	far-IR	Solid-Substrate	DTGS-PE	700 - 50	ETC
			Si bolometer	700 - 20	ETC

Notes:

* This spectral range reflects the combination of the ranges of the ETC and white light sources, as well as the limits of the beamsplitter-detector combination. The range achieved using one of these sources will not be as broad as the total range shown.

† Si detectors can be used only with a white light (tungsten-halogen) source.

‡ These detectors must be cooled with liquid nitrogen before use.

§ InSb detectors will not produce a signal under intense light. During installation and alignment, start with the smallest aperture setting.

¶ CsI beamsplitters are extremely hygroscopic (sensitive to moisture).

Improving the quality of your spectral data

If you are using the spectrometer for quantitative analysis or other demanding applications, you are concerned with the precision and accuracy of your spectra. For these types of applications it is important that the spectra you collect have high wavelength precision. This means that the frequency axis (X-axis) location of peaks in a spectrum is consistently reproducible and within IUPAC (International Union of Pure and Applied Chemistry) published specifications. You must also be certain that your spectrometer responds linearly to the samples you are studying. This means that absorption band intensity is directly proportional to the number of molecules subjected to the light beam; thus, as the number of molecules in the beam increases, the detected absorbance signal also increases at a consistent rate.

If you are studying samples that produce tiny spectral peaks or have weak spectral features, or if you are looking for small changes in your samples, make sure the signal-to-noise ratio is high enough to let you distinguish spectral features from the noise inherent in all experimental data. This prevents the signals containing spectral information from being lost among the signals generated by the random movement of electrons, building vibrations, light source fluctuations and other such sources.

The next sections explain several ways you can optimize Thermo Electron detectors to improve the quality of your spectral data.

Improving linearity and photometric accuracy

Some detectors (including PbSe, Si, MCT-A and InSb detectors) are highly sensitive and can become saturated or produce a distorted (non-linear and photometrically inaccurate) signal if the light energy is not reduced before it reaches the detector element or if the detector gain is set too high.

Look at a single-beam spectrum in the low-end region around 600 to 375 cm^{-1} . You should see a straight line very near 0 intensity units. As a rule of thumb, the distance from 0 to the baseline should be less than 1% of the spectrum's maximum intensity value. If the detector is saturated, you will see false energy in the low-end region. The baseline might be far above zero.

Note The maximum intensity of a mid-IR single-beam spectrum is typically found near 2,000 cm^{-1} . ▲

Note If the distance from the baseline to 0 is greater than 20% of the spectrum's maximum intensity value, your detector electronics may be overloaded. Contact technical support for assistance. ▲

The distorted signal may cause problems with photometric accuracy. For good quantitative data, the sample and background interferograms should be about the same size. Scattering samples and very dense samples produce very small signals that, when compared with much larger background signals, can distort quantitative data.

Check the background and sample interferograms. If you see a substantial difference in their sizes, photometric accuracy could be a problem.

To solve these problems, you can use the following options to modify the infrared beam:

- Use a bandwidth-limiting filter.
- Use an energy screen.
- Adjust the aperture (on a Nicolet 6700).



In Spectrometer Help Topics view “Setting up experiments” for instructions for using filters and energy screens.

In some cases, system performance improves if you use a filter or screen. The filter or screen that you should use for your application depends on the samples being measured and other experimental conditions. Try using various filters or screens to determine which give the best results.

When to use bandwidth-limiting filters

Use bandwidth-limiting filters to improve the signal-to-noise ratio of the data and also prevent detector saturation by allowing only energy in your particular area of interest to pass to the detector element.

An optional filter wheel (available for the Nicolet 6700 only) lets you automatically move a filter into the beam path before collecting data. See “Using the filter wheel” in the “Spectrometer Options” chapter for more information.



In Spectrometer Help Topics view “Setting up experiments” for instructions for installing filters in the sample compartment or optional filter wheel.

When to use energy screens

Depending on the types of detectors you use, your system may include a set of four energy screens. These metal screens help prevent detector saturation and signal distortion by blocking out a portion of the energy at all frequencies of the infrared beam. If your experiments deal with information from a broad range of frequencies, these screens may be the most effective means of reducing the light level.

The energy screens are labeled A, B, C and D. The following table shows the percentage of the infrared energy that each screen passes. It also lists the detectors typically used with each screen, as a starting point for correcting linearity problems.

<i>Screen</i>	<i>% Transmitted*</i>	<i>Detectors Typically Used With Screen</i>
None	100	DTGS
A	30	MCT-A
B	10	
C	3	
D	1	

* These are nominal values that may vary due to diffraction and detector variations.

To correct for photometric accuracy, you may need to add a “heavier” screen (one that transmits less infrared energy). With corrections for photometric accuracy you will notice some reduction in the signal-to-noise ratio but will obtain more reliable quantitative data. Generally, the signal-to-noise ratio is reduced less than is the signal intensity.



In Spectrometer Help Topics view “Setting up experiments” for instructions for installing energy screens in the sample compartment.

An optional energy screen wheel lets you automatically move a screen into the beam path before collecting data. See “Using the energy screen wheel” in the “Spectrometer Options” chapter for more information.

What aperture size to use for your detector

The aperture in a Nicolet 6700 is a variable-diameter opening that controls the angular size of the infrared beam and, thus, the amount of radiation that reaches the sample. Using an aperture has these advantages:

- It lets you use more sensitive detectors.
- It helps prevent infrared energy saturation, so the response of the detector is more linear.
- It improves wavenumber accuracy and resolution by acting as a point source of infrared radiation.

In general you will find that the larger the aperture, the better is the signal-to-noise ratio of the collected data. The smaller the aperture, the better the stability and accuracy will be. Small apertures are needed for high-resolution experiments.

DTGS detectors can accommodate most of the energy from the source, which means you should use a large aperture size. Detectors that require cooling with liquid nitrogen are very sensitive and require a small aperture size or the use of an energy screen (see the preceding section for more information).

Note On a Nicolet 6700, the setting of the Aperture parameter determines the *area* of the aperture opening. Doubling the setting approximately doubles the area. The light energy is proportional to the aperture area. A setting of 100 gives a nominal aperture diameter of 8 mm and an approximate area of 0.50 cm². ▲

The following table lists recommended aperture settings for different detectors with the appropriate energy screen installed. (See the preceding section for information about the correct energy screen to use for each detector type.) The settings in the table are based on the physical size of the detector elements and maximize the amount of infrared energy that reaches the sample. To correct linearity and photometric accuracy problems, you can reduce the setting, but you will pay a price in terms of the signal-to-noise ratio.

<i>Detector</i>	<i>Aperture Setting</i>
DTGS	100
MCT-A, MCT-B, InSb, PbSe, Si, InGaAs	32



In OMNIC Help Topics find “aperture” in the Index and go to “Setting the aperture size” for information about changing the aperture setting.

How to improve the signal-to-noise ratio

If you primarily analyze qualitative data, you may wish to optimize the system for a better signal-to-noise ratio. This can be particularly important when you are working with scattering samples and samples that absorb more infrared energy. These samples produce smaller signals that can be “lost” in the noise.

There are several ways to improve the signal-to-noise ratio. The most commonly used method is to increase the number of scans. This both reduces the noise level and makes small absorptions easier to distinguish. You can also improve the ratio by reducing the resolution (that is, using a higher Resolution setting).

Another method is to use an energy screen that transmits more light (or no screen at all). In this case, the resulting spectrum might be distorted and accuracy and stability could be reduced. Checking the single-beam baseline in the region below the low-end cutoff will give you a rough idea of how much distortion is occurring. If the distance from the baseline to 0 is more than 15% of the spectrum’s maximum intensity value, you may have difficulty reproducing the results.

Note If the distance from the baseline to 0 is greater than 20% of the spectrum’s maximum intensity value, your detector electronics may be overloaded. Contact technical support for assistance. ▲



In Spectrometer Help Topics view “Setting up experiments” for instructions for installing filters and energy screens.

How to improve the resolution

If you want to achieve higher resolution, you may need to use a smaller aperture setting (on a Nicolet 6700) and an energy screen that transmits more light (or no screen at all). Your spectroscopy software will automatically change the aperture setting if a smaller beam size is required. Be aware that the smaller beam size will reduce the signal-to-noise ratio.



In OMNIC Help Topics find “aperture” in the Index and go to “Setting the aperture size” for information about changing the aperture setting.

How to collect data in the visible spectral range

The ability of the spectrometer to collect data is affected by the detector-beamsplitter combination and any energy screens or optical filters that are installed in the spectrometer. For example, if you use an optional quartz beamsplitter, a silicon detector and a white-light source, the sampling range is extended to 25,000 cm^{-1} .

Since silicon detectors are very sensitive, you will also need to install an energy screen or bandwidth-limiting filter to prevent the detector from being saturated during the experiment. The following table lists a variety of spectral bands in the extended spectral range and lists the filter or energy screen that should be used to obtain data in each range. It also lists typical aperture and gain settings for experiments in each range. (Only the Nicolet 6700 has an aperture.)

<i>Spectral Range</i>	<i>Filter or Screen</i>	<i>Aperture</i>	<i>Gain</i>
16,000 - 9,000 cm^{-1}	red filter	32	1
16,000 - 9,000 cm^{-1}	energy screen A	32	1
23,000 - 16,000 cm^{-1}	broad-band blue filter	100	8
26,000 - 21,000 cm^{-1}	narrow-band blue filter	100	8

You can use these filters and settings as a starting point and vary them as required by your experimental conditions. To set the aperture and gain, set the Aperture and Gain parameters on the Bench tab in the Experiment Setup dialog box.



In Spectrometer Help Topics view “Setting up experiments” for instructions for installing filters and energy screens.

The optional filter wheel (available for the Nicolet 6700 only) and energy screen wheel let you automatically move a filter and energy screen into the beam path before collecting data. See “Using the filter wheel” and “Using the energy screen wheel” in the “Spectrometer Options” chapter for more information.

About the moving mirror velocity

While a wide range of moving mirror velocities are available on Nicolet 4700 and Nicolet 6700 spectrometers, some velocity settings cannot be used for collecting data at certain combinations of spectral range and resolution:

If you are collecting data over a spectral range above 7899 cm^{-1} , velocity settings faster than 2.53 cm/s are not available.

To specify the velocity and spectral range, set Velocity and Spectral Range on the Bench tab of the Experiment Setup dialog box. To specify the resolution, set Resolution on the Collect tab.

Important

When you switch to a different detector (on either model spectrometer) or beamsplitter (on a Nicolet 6700 only), OMNIC automatically resets the default spectral range in the Experiment Setup dialog box. Be sure to check the range and set the velocity to a value that is appropriate. ▲



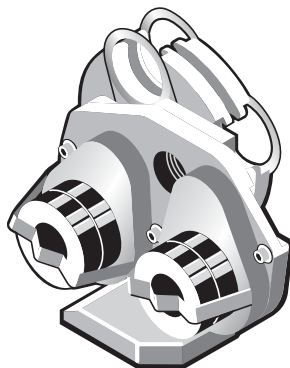
Spectrometer Options

This chapter explains how to use these optional spectrometer features:

- The **automated filter wheel** (available for the Nicolet 6700 only) moves optical filters (supplied by you) into the beam path.
- The **energy screen wheel** moves an energy screen into the beam path to reduce the energy reaching the detector.
- The **polarizer** allows you to control the orientation of the electric field vector of the infrared beam entering the sample compartment.

Using the filter wheel

The optional filter wheel accessory (available for the Nicolet 6700 only) lets you automatically insert optical filters (band-pass, low-pass or high-pass) into the beam path. This lets you reduce the amount infrared light that reaches the detector in a spectrally selective way. This is particularly useful for studies of small spectral regions or for blocking noisy spectral regions that contain no data of interest. Energy from other regions does not reach the detector, thus improving the signal-to-noise ratio in the region of interest.

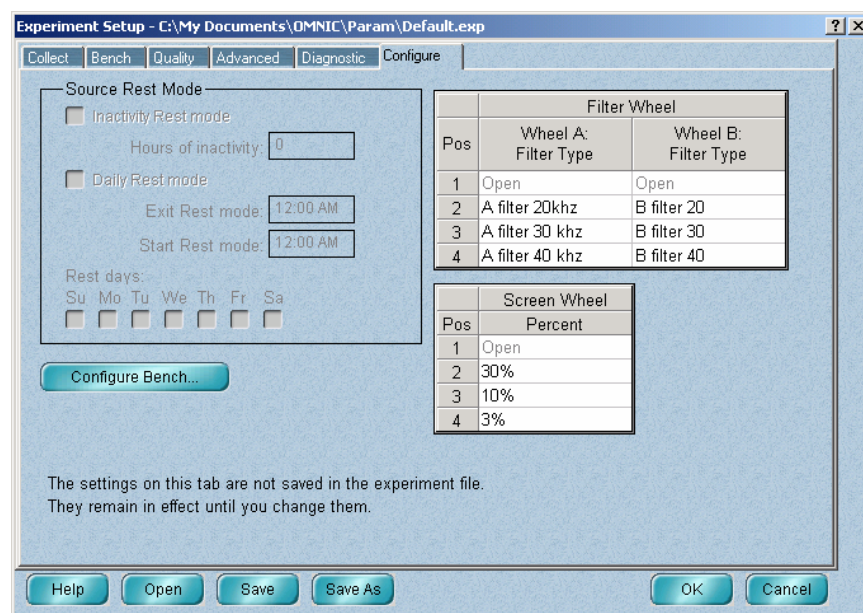


The accessory has two wheels: wheel A is closest to the source. Each wheel can be moved to one of four positions. Both wheel A and wheel B have an open position for collecting spectra without a filter in the beam path. Positions 1, 2 and 3 are available for filters that you provide. Each position accepts one 1 mm thick or one 4 mm thick filter that is 1-inch in diameter. Spacers are provided to secure 1-mm filters in position.



In Spectrometer Help Topics view “Installing an optical filter in the automated filter wheel” in the “Setting up experiments” book for instructions for installing filters in the wheel.

Once you have installed your filters, enter their descriptions into OMNIC using the Filter Wheel table on the Configure tab of the Experiment Setup dialog box. Be descriptive.

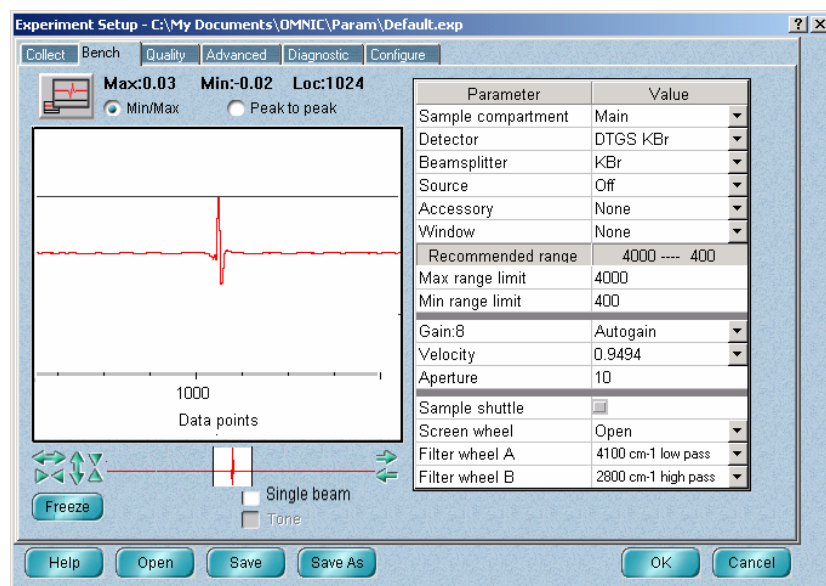


In OMNIC Help Topics find “filter wheel” in the Index and go to “Entering descriptions of the filters in the filter wheel” for more detailed instructions.

Your filter descriptions will be saved in the experiment file and are available for selection through the Filter Wheel A and Filter Wheel B parameters on the Bench tab of Experiment Setup. Your descriptions of the filters used during data collection also are saved in the collection and processing information for the spectra you collect.

By controlling which position of each wheel is in the beam path, you can collect spectra with no filter, just one filter or a combination of two filters. For example, you could install and select a band-pass filter to block out frequencies in both the high and low ends of the spectral range, resulting in a spectrum with absorptions only in the middle of the range. You also could accomplish mid-range data collection using a high-pass filter installed in one wheel and a low-pass filter installed in the other.

To specify the filter(s) to use for an experiment, set Filter Wheel A and Filter Wheel B on the Bench tab of the Experiment Setup dialog box (available through Experiment Setup in the Collect menu).

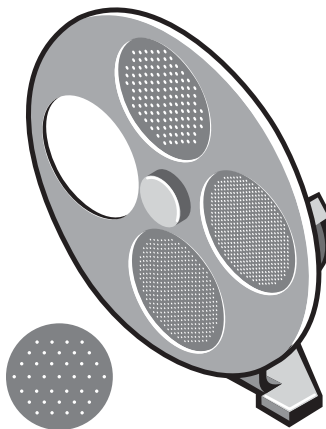




In OMNIC Help Topics find “filter wheel” in the Index and go to “Controlling the filter wheel” for more detailed instructions.

Using the energy screen wheel

The optional energy screen wheel lets you automatically insert an energy screen into the beam path to block out a portion of the energy at all frequencies of the infrared beam. This is useful for preventing detector saturation and signal distortion. For more information about using energy screens, see “When to use energy screens” in the “Spectrometer Basics” chapter.

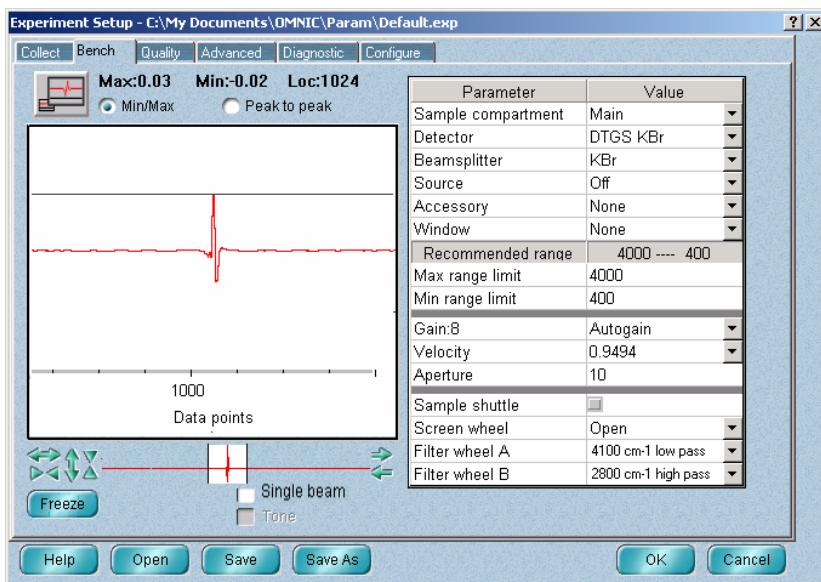


The wheel can be moved to any of four positions: an open position (for collecting spectra without a screen in the beam path) and 3 screen positions. As shipped from the factory, the screen positions are populated with 30%, 10%, and 3% screens. The Screen Wheel parameters in Experiment Setup to describe the percentage of light transmitted by each screen installed in the wheel. Simply select one to move the screen into the beam path.

To specify the screen to use for an experiment, set Screen Wheel on the Bench tab of the Experiment Setup dialog box (available through Experiment Setup in the Collect menu).



In OMNIC Help Topics find “energy screen wheel” in the Index and go to “Controlling the energy screen wheel” for complete instructions.



After you have moved a screen into the beam path, you can see its effect on the signal intensity in the live display on the Bench tab. This helps you select the optimum screen for a particular sample.

A 1% screen also is shipped with the wheel. Contact technical support if you wish to use this or other screens that you provide in the wheel. If you use the 1% screen or one of your own, be sure to change the description of the screen position on the Configure tab.



In OMNIC Help Topics find “energy screen wheel” in the Index and go to “Specifying the energy screens in the energy screen wheel” for more detailed instructions.

Experiment Setup - C:\My Documents\OMNIC\Param\Default.exp

Collect Bench Quality Advanced Diagnostic **Configure**

Source Rest Mode

Inactivity Rest mode
Hours of inactivity:

Daily Rest mode
Exit Rest mode:
Start Rest mode:

Rest days:
Su Mo Tu We Th Fr Sa

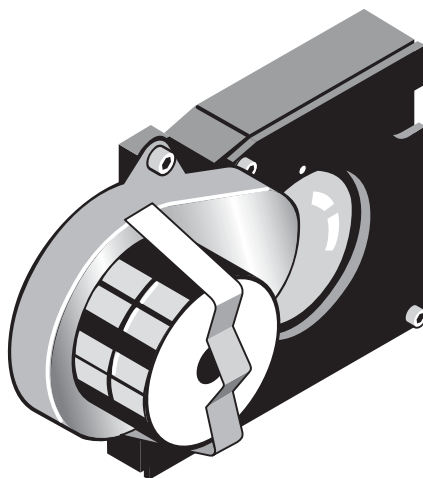
Filter Wheel		
Pos	Wheel A: Filter Type	Wheel B: Filter Type
1	Open	Open
2	4100 cm-1 low pass	2800 cm-1 high pass
3		
4		

Screen Wheel	
Pos	Percent
1	Open
2	30%
3	10%
4	3%

The settings on this tab are not saved in the experiment file.
They remain in effect until you change them.

Using the internal polarizer

An optional automated polarizer lets you automatically control the orientation of the electric field vector of the IR beam entering the sample compartment. The range of orientation is 0 to 180 degrees in increments of 1 degree. At 0 degrees, the electric field vector is oriented vertically, perpendicular to the sample compartment base plate. This option is useful for performing polarization studies of thin films and other sample types.



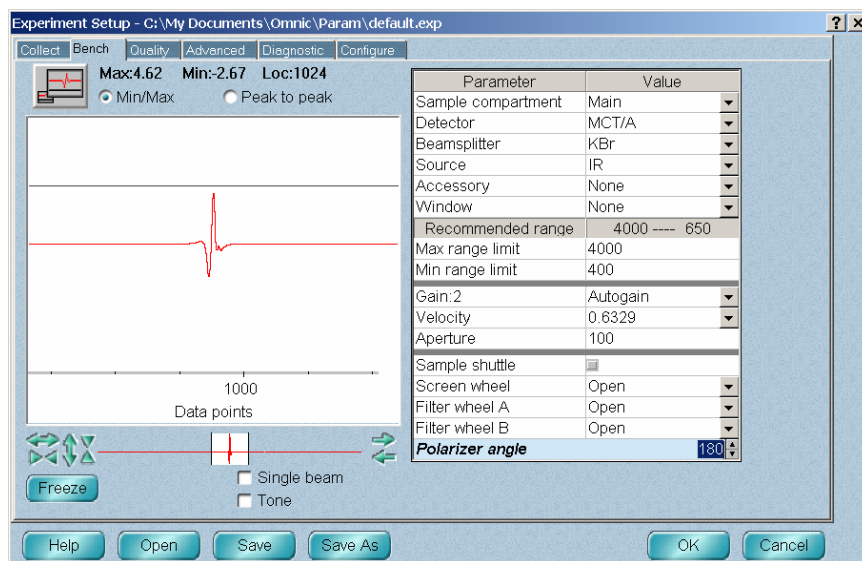
Note The polarizer cannot be installed on spectrometers with sample compartment windows. ▲



In Spectrometer Help Topics view “Installing optional hardware” for detailed information about installing the polarizer.

In these experiments, a unique background is required for each polarization position used. For example, if you are going to collect spectra at 0 and 90 degrees, corresponding background spectra are required at 0 and 90 degrees.

To set the polarization angle, type any number from 0 to 180 in the Polarizer Angle text box on the Bench tab of the Experiment Setup dialog box (available through Experiment Setup in the Collect menu). Use the up and down arrows to step the polarizer one degree at a time to optimize your signal.



In OMNIC Help Topics find “polarizer” in the Index and go to “Controlling the polarizer” for more detailed instructions.

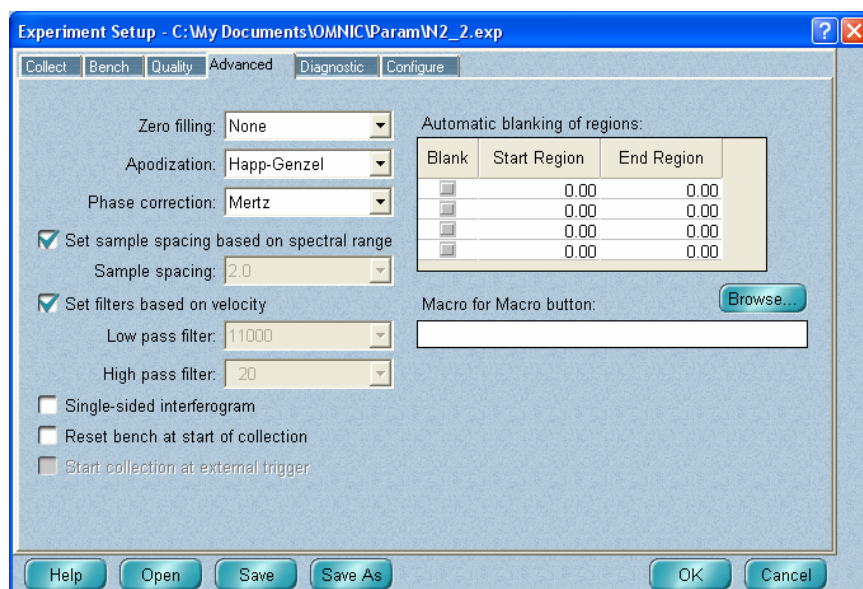
Begin your experiment by collecting backgrounds (as single beam spectra) at each polarizer angle required by your experiment. Save each background spectrum with a unique, descriptive name, such as Background 0, Background 90. Once the background spectra are collected and saved, you can begin to collect sample spectra. Sample data may be collected and saved as single beam spectra. Once data collection is complete, use the appropriate background file to reprocess the data into your final format. Sample data also may be collected and saved as ratioed spectra (%T, A, %R etc.) using the corresponding stored background. Use the Background Handling parameter on the Collect tab in Experiment Setup to specify the

background file name. Click the Use Specified Background File checkbox and then enter the background spectrum filename.

If you have OMNIC Macros\Basic or OMNIC Macros\Pro, you can create a macro that changes the angle incrementally with each successive set of background and sample spectra.



Then use Experiment Setup to specify that the Macro button start the experiment and run the macro. Use the Macro for Macro button field on the Advanced tab in Experiment Setup dialog box (available through Experiment Setup in the Collect menu) to specify the macro to run. You may browse to locate the macro file or type the full path and file name into the text field.



If you have OMNIC Series, you can display the series of spectra collected in this way. To create a series (.SRS) file from your spectra, follow the instructions in "Creating a series data set" in the "Series Menu Commands" chapter of the OMNIC Series User's Guide.



Accessories

This chapter briefly describes the types of sampling and system accessories that are available for your spectrometer. Complete descriptions and operating instructions are included with the accessories.

Smart Accessories

In addition to traditional accessories, a variety of Smart Accessories are available for your spectrometer. Nicolet FT-IR spectrometers identify each Smart Accessory as it is installed and set the software parameters for data collection. Also, a series of spectral quality checks are performed to ensure that the accessory is installed and operating correctly.



Detailed tutorials for installing, operating and maintaining each Smart Accessory are provided on-line. To start a Smart Accessory tutorial, click Sampling Techniques in the Help menu and then click the accessory name.

Smart ARK – This is a horizontal ATR (attenuated total reflection) accessory with high stability, complete purge capabilities, tool-free alignment and high performance specifications. It includes integral purge tubes that seal the accessory from the atmosphere, and a cast aluminum body for exceptional stability.

Smart Collector – Diffuse reflection enables analysis of highly light-scattering solids that are difficult to analyze using transmission techniques. This method is also useful when the sample, usually a powder, must be analyzed without modification.

Smart Diffuse Reflectance – The diffuse reflection technique lets you analyze highly light-scattering solids that are difficult to analyze using transmission techniques. The technique is also useful when the sample, usually a powder, must be analyzed without modification. This accessory lets you analyze a wide variety of sample types and features integral sample cups for convenient, fast sampling.

Smart DuraSamplIR – This single-reflection horizontal ATR accessory has a viewing feature that makes it easy to position the sample and monitor the applied pressure. The accessory is ideal for small samples and can be used to measure liquids, powders and pliable solids.

Smart DuraScope – The Smart DuraScope combines the benefits of a diamond ATR element with video enhancement to create an analysis tool for a wide range of sample types, from large, hard materials to small inclusions and contaminants. You can position the sample while looking through the diamond ATR element. This helps you manipulate micro samples to achieve optimum contact with the crystal, resulting in superior quality spectral data.

Smart Endurance – This single-reflection diamond ATR accessory is rugged and versatile. It stands up to highly corrosive, caustic, intractable or abrasive samples, making it a good choice for almost any sample type.

Smart Golden Gate – This is a horizontal, single-reflection ATR accessory that features an extremely durable diamond crystal. It handles a wide range of sample types, including hard or brittle solids, corrosive liquids and hard powders.

Smart Mid-IR FiberPort – This high-throughput accessory lets you analyze liquids remotely. The needle probe can reach “hard to get” samples, such as liquids in micro containers, hazardous environments or remote locations. The FiberPort is a unique optical interface that transfers IR energy from the spectrometer to the fiber optic cables and probes. A complete line of fiber optic probes is available for sampling a wide range of sample types.

Smart MIRacle – This is a single-reflection horizontal ATR accessory with exceptional throughput and sensitivity. It can use several crystal types and has a micrometer screw for precise control of applied pressure.

Smart Multi-Bounce HATR – This multi-reflection horizontal ATR accessory has a shorter pathlength and higher throughput than traditional HATR accessory designs. It is the best choice for routine analysis of strong infrared-absorbing samples. This accessory is ideal for rapid quantitative and qualitative analyses, since sample preparation is usually not necessary.

Smart OMNI-Sampler – This single-reflection ATR accessory features a spherical crystal that lets you measure a wide variety of sample types. The unique tower design automatically applies the optimum pressure while protecting the crystal. The accessory is ideal for analyzing very small samples or sample areas and provides high reproducibility.

Smart OMNI-Transmission – This easy-to-install transmission accessory lets you sample liquids, gases and solids using a wide variety of transmission cells and infrared cards.

Smart Orbit – This single-reflection ATR accessory features a durable diamond crystal and a swivel pressure tower that ensures consistent pressure from sample to sample. You can use the accessory to perform analyses from the near-IR to the far-IR.

Smart Performer – This single-reflection ATR accessory features a horizontal sampling surface for collecting high quality spectra with minimal sample preparation. The accessory uses a wide variety of low cost crystals that are easy to install and remove.

Smart Refractor – This top-loading accessory is designed for fast analysis of coatings on reflective substrates using the grazing angle specular reflection technique.

Smart SAGA – This advanced accessory is designed for the analysis of thin films on reflective substrates. The 80 degree angle of incidence for this reflection-absorption accessory allows sensitive measurements of films as thin as 0.1 nm.

Smart SpeculATR – This single-bounce horizontal ATR/specular reflection accessory allows versatility in measurement where a range of sample morphologies may need to be analyzed.

Smart SplitPea – This horizontal ATR microsampling accessory is designed for fast analysis of solids, liquids, and powders. It is ideal for analyzing hard materials, small samples or samples where only minute quantities are available.



In OMNIC Help Topics find “accessory” in the Index and go to “Specifying the accessory” for instructions for setting up and saving experiments for custom accessories.

Other sampling accessories for different applications

You can install many of the sampling accessories yourself. After you install an accessory, you may have to align it. Instructions for aligning the spectrometer are included in the “Maintenance and Service” chapter of this manual. Instructions for aligning an accessory are provided in the documentation that came with that accessory.



Some accessories fit into the sample compartment and require that you remove the Snap-In baseplate before installing the accessory. For information about using Snap-In baseplates, view “Removing the Snap-In baseplate” in the “Setting up experiments” book in Spectrometer Help Topics.

Note Additional Snap-In sample compartment baseplates are available for use with each accessory to make changing accessories easier. ▲

Call Thermo Electron if you are interested in ordering any of the following sampling accessories.

Absolute transmission accessory – This accessory allows for the measurement of absolute transmission of samples with reflective surfaces. The design prevents energy reflected from the sample from entering the interferometer for remodulation. Using this accessory involves replacing pinned-in-place mirrors before and after the sample compartment.

Automatic sample wheel – This accessory holds multiple samples and rotates them into the beam path for data collection. The sample wheel is commonly used to measure multiple polymer or pressed-powder samples automatically.

Auxiliary experiment module (AEM) – The AEM provides you with an additional sample compartment. You can position it on the right or left side of the spectrometer. With an AEM installed, you can run routine analyses with the spectrometer and quickly switch beam paths to the AEM to collect data from other samples without removing accessories from the main sample compartment. Any accessory or detector that can be installed in the spectrometer can be installed in the AEM. The AEM has two detector locations.

Custom accessory baseplate – You can use this Smart baseplate to mount an accessory you have built or purchased from another manufacturer. When you install the accessory and baseplate in the sample compartment, the system automatically selects the Custom Accessory experiment (or allows you to select from the experiments you have saved for the baseplate).

Detector interface kit – A variety of accessories (that were specifically designed for Nicolet FT-IR spectrometers) contain detectors that are automatically recognized by your spectrometer. The detector interface kit allows your spectrometer and OMNIC software to recognize other detectors, including non-Thermo Electron detectors.

Energy screen wheel – This accessory lets you prevent detector saturation and signal distortion by using a screen to block a portion of the infrared energy. See “Using the energy screen wheel” in the “Spectrometer Options” chapter for complete information.

Filter wheel – This accessory (available for the Nicolet 6700 only) lets you control the spectral range of the infrared light that reaches the detector by inserting low pass or high pass filter into the beam path. See “Using the filter wheel” in the “Spectrometer Options” chapter for complete information.

Foundation Series – The innovative modular design of this accessory family provides access to several sampling devices using a common base. This allows experimental flexibility and an economical price. Available techniques include ATR, diffuse reflection, specular reflection, transmission and fiber optics.

Gas cells – A variety of short- and long-pathlength gas cells are available. Cells include built-in transfer optics that fit into your spectrometer. The cells are suitable for use in both ambient and elevated temperature conditions. Gas cell heating, transfer optics purge, gas manifold, and sample window options are available to accommodate a variety of sample gases and sampling conditions.

GC interface – This interface attaches to the right side of the spectrometer and must be connected to a gas chromatograph (GC). You can then analyze IR spectra from GC experiments using the OMNIC Series software.

Liquid Analysis System – This system lets you collect and process quantitative analysis data for liquid samples. It uses OMNIC Integra software, which contains methods for quantifying components in specific types of liquids.

Microplate accessory – This accessory allows you to collect transmission or diffuse reflectance spectra of multiple solid or liquid samples consecutively. All the samples are loaded into the sample chamber at one time into a 96 or 384 well microtiter plate. The ejection, insertion, and movement of the well plate inside the sample compartment is controlled by software.

Near-IR Heated Cuvette Holder E.S.P. – This accessory is designed for analyzing samples that require a constant or elevated temperature to obtain reproducible near-IR results. You can use it to analyze liquids, gels and solids that have a low melting point, such as waxes.

Nicolet Centaurus and Nicolet Continuum infrared microscopes

– Thermo Electron offers microscopes that attach directly to the side of the spectrometer. Microscopes can be installed between the spectrometer and other accessory modules. The microscopes provide fast, nondestructive microanalysis with minimal sample preparation and alignment.

PAC 300 Photoacoustic E.S.P.

– Photoacoustic spectroscopy (PAS) is a powerful technique for the nondestructive spectroscopic analysis of solid samples of all types. PAS is particularly applicable to powders (including dark, highly absorbent samples), polymer pellets, beads, and sheets and films. The PAC 300 Photoacoustic E.S.P. accessory is fully integrated with the spectrometer and computer. It automatically selects an OMNIC experiment, draws power right from the spectrometer and includes an on-line tutorial.

Polarizer – This accessory lets you control the orientation of the electric field vector of the infrared beam as it enters the sample compartment. This is particularly useful for characterization of monolayers, thin films and other sample types. See “Using the polarizer” in the “Spectrometer Options” chapter for more information.

Remote Start accessory – This accessory adds external trigger capability to your spectrometer. With a press of the Start switch, you can control the start of data collection or coordinate the start of an external experiment.

SabIR – This accessory provides remote sampling capability for raw material identification, quality measurements, and sample component analysis. The system is optimized for diffuse-reflectance sampling of solids and powders. Materials may be sampled directly or indirectly through packaging materials.

Sample shuttle – A sample shuttle lets you collect background spectra without removing the sample from the sample compartment. The shuttle automatically moves the sample out of the beam path before background collection begins. Since the sample compartment cover is not opened, the system purge is maintained.

Specular reflection accessories – Specular reflection provides a nondestructive method for measuring surface coatings without sample preparation. Specular reflection accessories can be used to analyze surface-treated metals, paints, semiconductors, and resin and polymer coatings.

TGA interface/TGA module – This interface is equipped with a built-in, temperature-controlled flow cell and must be connected to a thermogravimetric analysis (TGA) furnace. You can analyze the evolved gases from TGA experiments using the OMNIC Series software. The TGA interface is usually mounted in the sample compartment of an AEM; the TGA module is usually installed on the side of the spectrometer, leaving the AEM or spectrometer sample compartment free for other experiments and accessories.

Transmission E.S.P. accessory – Transmission is the oldest and most efficient sampling technique in FT-IR spectroscopy and can be used for sampling liquids, gases or solids. A variety of cells and sample holders are available for transmission analysis. All can be mounted in the spectrometer sample compartment. Thermo Electron's E.S.P. (Enhanced Synchronization Protocol) technology provides continuous communication between the accessory and OMNIC to ensure that the accessory is operating correctly. This accessory, or the validation wheel (described below), is required for using an NPL or serialized polystyrene standard for validation with Thermo Electron's Val-Q software.

Validation wheel – The validation wheel is used with Val-Q to validate the performance of the spectrometer. The wheel automatically moves standard samples into the beam path at the appropriate times during the validation procedure. The samples are traceable to standards from the National Institute of Standards and Technology (NIST). An optional calibrated sample from the National Physical Laboratory (NPL) is also available.

System accessories

Some system accessories are installed by Thermo Electron. Call us if you are interested in ordering any of the following accessories.

Power line conditioner – Power line conditioners protect your spectrometer and other accessories from damage or malfunction due to voltage dropouts, transient spikes, frequency shifts or other disturbances in your electrical service.

Pure air dryer – If you have difficulty controlling moisture in your laboratory, the pure air dryer provides additional protection for the hygroscopic elements of your spectrometer. This accessory is also useful if your laboratory air supply is contaminated with volatile solvents, oil or other reactive materials.

Purge gas generator – If you do not have in-house facilities to supply compressed air or nitrogen for system purge, Thermo Electron offers several purge gas generators.

RSVP (Remote Support and Verification Program) – This diagnostics option uses a data modem and remote control software to allow control of your computer (and spectrometer) through the modem link. An analog telephone line is required.

Smart Purge Kit – This kit adds enhanced purging capability to your spectrometer. When you open the sample compartment cover or its sliding door, Smart Purge automatically increases the purge gas flow rate for a short time. This keeps water vapor, carbon dioxide and other unwanted gases out of the spectrometer while you install or remove a sample. You can then collect spectra without waiting for proper purge to be restored.

Uninterruptable power supply – An uninterruptable power supply reduces the chance of a system shutdown if power is lost.

How to cable an accessory

When you install an accessory in the sample compartment, you may need to connect one or more cables from the accessory to connectors on the rear wall of the compartment. You may also need to attach cables from other peripherals (such as computers, custom controllers or power supplies) to the accessory or from the accessory to the connectors on the front of the spectrometer. The instructions that came with the accessory contain specific information about connecting that accessory.

Pass-through connectors

Your spectrometer may be equipped with pass-through connectors for use with special accessories. These connectors allow you to make accessory cable connections through the spectrometer. This eliminates the need to run cables through the seal on the sample compartment cover or out the top of the sample compartment.

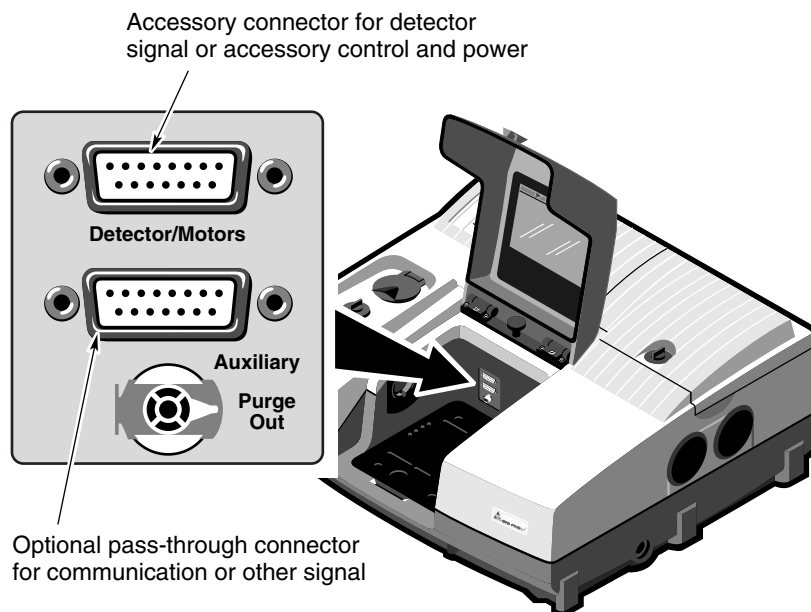
Caution

Improper or unsafe cabling can cause damage to your accessory and create a safety hazard. Only qualified persons should cable a custom accessory using these connectors. Thermo Electron is not responsible for damage or injury resulting from improper or unsafe cabling. ▲

To use the pass-through connectors, connect the accessory inside the sample compartment and connect the external power or communications peripheral to the corresponding pass-through connector on the front of the spectrometer.

Connectors inside the sample compartment

The following illustration shows the locations of the electrical connectors inside the sample compartment:

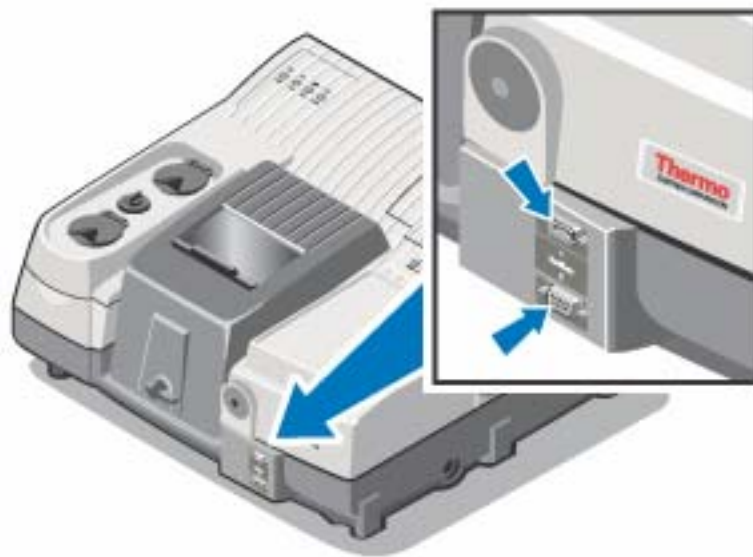


Detector/Motors – If you have a photoacoustic or other accessory that has a detector or motor located in the spectrometer sample compartment, connect the cable from the detector or motor to this standard connector. This is *not* a pass-through connector. See “Detector/Motors connector” for information about using this connector to connect custom hardware.

Auxiliary – Six pins on this optional connector can be used for passing DC power input or other signals from the Auxiliary 1 and Auxiliary 2 connectors on the front panel to an accessory. For example, the automatic sample wheel and the ProfilIR accessory get DC power through this connector when the DC power output of an AC-to-DC converter is attached to the Auxiliary 1 connector on the front panel. See “Using connectors for custom accessories” for information about which pins are available for use.

Connectors on the front of the spectrometer

The illustration below shows the optional connectors on the front of the spectrometer that you can use to pass signals to and from the sample compartment.



Note These connectors are available only on systems that do not include the SabIR accessory or the microplate accessory. ▲

Auxiliary 1 – This connector passes power or other signals for the accessory to three pins on the Auxiliary connector inside the sample compartment. This connector could be used, for example, to attach the DC output of an AC-to-DC converter to provide DC power to an accessory in the sample compartment.

Auxiliary 2 – This connector passes signals to three pins on the Auxiliary connector inside the sample compartment. This connector could be used, for example, to allow an accessory in the sample compartment to be controlled through your computer's serial (RS-232C) port.

See the next section for information about which pins are available for use.

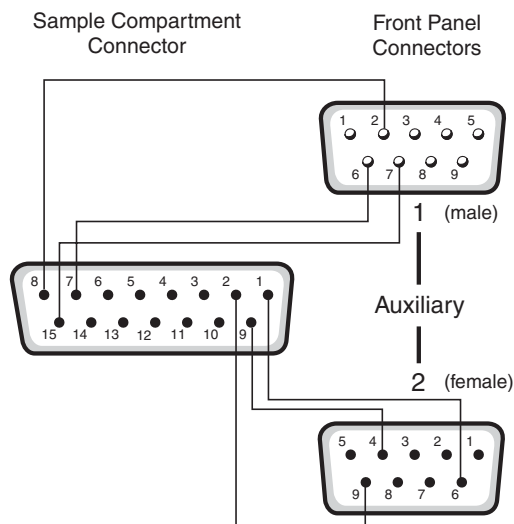
Using the pass-through connectors for custom accessories

By connecting custom cables that use the pins on the pass-through connectors, you can provide power and communication or other signals for your custom accessories. The power and signals pass through the spectrometer from the front to the sample compartment and vice versa. Make sure your use of the connectors complies with the voltage and current limitations given in the following Warning.

⚠ Warning

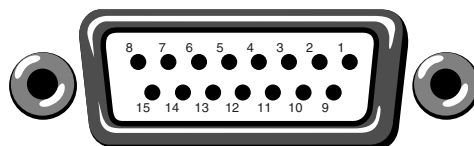
Improper or unsafe cabling can cause damage to your accessory and may create a safety hazard. Only qualified persons should cable a custom accessory using these connectors. Do not pass signals that exceed ± 15 VDC through these connectors. You must also limit the current to a maximum of 800 mA. Thermo Electron is not responsible for damage or injury resulting from improper or unsafe cabling. ▲

The following diagram shows schematically which pins of the **Auxiliary** connector inside the sample compartment are connected *internally* to pins of the **Auxiliary 1** and **Auxiliary 2** connectors on the front of the spectrometer. Since none of these connected pins are assigned by the Nicolet 4700 or Nicolet 6700, they are available for use with custom accessories.



Detector/Motors connector

You can use the Detector/Motors connector on the rear wall of the sample compartment to connect your own detectors, accessory motors and other custom hardware.



Detector/Motors

Make sure your use of the connector complies with the voltage and current limitations given in the following Warning.

▲ Caution

Improper or unsafe cabling can cause damage to your accessory and may create a safety hazard. Only qualified persons should connect a cable to the Detector/Motors connector. Do not use this connector for signals that exceed ± 15 VDC. Limit the current to a maximum of 800 mA. Thermo Electron is not responsible for damage or injury resulting from improper or unsafe cabling. ▲

The following table shows “pinout” information for the Detector/Motors connector. Use this information when designing a cable to connect your custom hardware to the connector. Refer to the preceding illustration for the locations of the numbered pins.

<i>Pin Number</i>	<i>Description</i>
1	Do not use this pin.
2	Used by the sample shuttle motor (negative).
3	Positive 5 volts.
4	Analog ground.
5	Used by the sample compartment detector for negative analog input.
6	Positive 12 volts analog.
7	Used by the sample compartment detector for digital communication.
8	Positive 5 volts.
9	Used for sample compartment digital communication.
10	Used by the sample shuttle motor (positive).
11	Positive 12 volts.
12	Analog ground.
13	Used by the sample compartment detector for positive analog input.
14	Negative 12 volts analog.
15	Used by the sample compartment detector for digital communication.



Quick Answers to Your Questions About Using OMNIC

This chapter answers some common questions about using OMNIC. Each answer is followed by a reference telling you where to go for more information.

Where a menu command name is given, the corresponding toolbar button is also shown. Depending on the software configuration you are using, a particular button may not be present in your toolbar.

Collecting spectra

How do I set the software for collecting spectra?



You can set the software in one step by selecting a stored experiment from the Experiment drop-down list box below the OMNIC window menu bar. To set the experiment parameters individually, use Experiment Setup in the Collect menu.

If you install a Smart Accessory, the system automatically sets the software parameters (or a list of appropriate experiments is made available for your selection), and you can begin collecting spectra.



Collecting a Spectrum (available through Learning OMNIC)...
“Preparing the Software”



In OMNIC Help Topics find “experiment” in the Index and go to “Selecting an experiment” or “Using Experiment Setup.”

How do I collect a spectrum?



First set the parameters as explained above. Depending on the settings, you may need to install or remove the sample before collecting data. Then press the Sample button on top of the spectrometer, or choose Collect Sample from the Collect menu.



Collecting a Spectrum (available through Learning OMNIC)...
“Collecting the Spectrum of a Sample”



In OMNIC Help Topics find “spectrum” in the Index and go to “Collecting a sample spectrum” or “Collecting a background spectrum.”

How do I specify the Y-axis unit for collecting spectra?



Choose Experiment Setup from Collect menu and then set Final Format on the Collect tab.



You can change the format of a collected spectrum by using Absorbance, % Transmittance or Other Conversions in the Process menu. See the question and answer in the next section for a description of the available units.



Collecting a Spectrum (available through Learning OMNIC)...
“Typical IR Transmission Spectrum”



In OMNIC Help Topics find “units” in the Index and go to “Selecting the final format.”

What does gain do?

Gain amplifies the detector signal intensity, making it larger relative to the level of electronic noise. This is helpful when the signal is weak, such as when you use some sampling accessories. You can let OMNIC automatically adjust the gain to maximize the signal by setting the Gain parameter to Autogain. We recommend using this setting to ensure the best spectral quality.



In OMNIC Help Topics find “gain” in the Index and go to “Setting the gain.”

When should I save interferograms with my spectra?

Save interferograms if you think you may want to restore the original data after it has been processed or if you want to keep an archive of your original data.



Collecting a Spectrum (available through Learning OMNIC)...
“Preparing the Software”



In OMNIC Help Topics find “saving, interferograms” in the Index and go to “File handling.”

What does the Collect Sample window show?

The window displays the “live” spectrum as it is being collected plus a gauge indicating the progress of the collection, an indicator showing whether any problems have occurred and other information about the collection.



Collecting a Spectrum (available through Learning OMNIC)...
“Collecting the Spectrum of a Sample”



In OMNIC Help Topics find “spectrum” in the Index and go to “Collecting a sample spectrum.”

How do I know my spectra are meeting quality standards?

OMNIC continuously monitors the quality of the data you collect, based on the parameters you set. The Quality tab in the Experiment Setup dialog box contains parameters for specifying the spectral quality characteristics that you want checked when you collect spectra.

OMNIC offers four categories of spectral quality checks:

- Spectrum checks
- Parameter checks
- Background checks
- Interferogram checks

When OMNIC performs a check and detects a problem, the Collect Status indicator is displayed as a yellow circle or a red X. Click the indicator (or click the View Collect Status button at the end of data collection) to see a summary of data collection problems encountered during the collection and other information about the collection.

When a collected spectrum passes all of the selected quality checks, the Collect Status indicator appears as a green check mark.



In OMNIC Help Topics find “quality checks” in the Index and go to “Quality checks.”

Converting spectra to other units

Which Y-axis unit should I use for a spectrum?

The most commonly used units are % transmittance and absorbance. Use % transmittance if you plan to compare the spectrum visually with published reference spectra. Use absorbance units for quantitative analysis measurements.

Kubelka-Munk units are useful for searching diffuse reflectance spectra against libraries of absorbance spectra.

Use photoacoustic units for spectra collected using a photoacoustic accessory.

Percent reflectance units are mathematically equivalent to % transmittance units, but using them for spectra collected using a reflection technique serves to identify the technique.

Using log (1/R) units for spectra collected using a reflection technique is useful for quantitative comparisons, since there is often a linear relationship between the concentration of a component and its log (1/R) value.



Collecting a Spectrum (available through Learning OMNIC)...
“Typical IR Transmission Spectrum”



In the OMNIC Help Topics Index...

Find “absorbance” and go to “Converting spectra to absorbance.”

Find “transmittance (%)” and go to “Converting spectra to % transmittance.”

Find “Kubelka-Munk units” and go to “Kubelka-Munk units.”

Find “photoacoustic units” and go to “Photoacoustic units” topic.

Find “reflectance (%)” and go to “% Reflectance units.”

Find “log (1/R) units” and go to “Log (1/R) units.”

Using spectral libraries



How do I search a spectral library?

First prepare the spectrum (as explained below) and display or select the region you want searched. Then set up the search using Library Setup in the Analyze menu and start the search by clicking the Search button in the Library Setup dialog box or by choosing Search from the Analyze menu.



In OMNIC Help Topics find “library” in the Index and go to “Setting up a library search” or “Searching a spectral library.”

How should I prepare my spectrum before searching it against a spectral library?

There are several corrections you can perform on a spectrum to obtain the best search results:



- If the baseline of the spectrum is sloped, curved or shifted vertically, correct it using Baseline Correct in the Process menu.



In OMNIC Help Topics find “baseline” in the Index and go to “Correcting a baseline manually.”



- If the spectrum has totally absorbing bands, eliminate them by using Blank in the Process menu. Be careful not to blank regions that contain other important spectral information.



In OMNIC Help Topics find “blanking spectral region” in the Index and go to “Blanking a spectral region.”

You can also use the region tool to select a region of the spectrum that does not include any totally absorbing bands or use the view finder to display the region before searching. (These methods avoid the loss of spectral information that results from blanking.)



In OMNIC Help Topics find “spectral region” in the Index and go to “Region tool” or “View finder.”



- If you collected the spectrum using specular or diffuse reflection, use Kramers-Kronig (dispersion) correction (available through Other Corrections in the Process menu) to correct it for dispersion effects and then search it against a library of absorbance spectra.



In OMNIC Help Topics find “Kramers-Kronig transformation” in the Index and go to “Kramers-Kronig (dispersion) transformation.”



- If you collected the spectrum using ATR (attenuated total reflection), use ATR correction (available through Other Corrections in the Process menu) to correct it for variation in the depth of penetration and then search it against a library of transmission spectra.



In OMNIC Help Topics find “ATR correction” in the Index and go to “ATR correction.”



- If the spectrum has water or carbon dioxide peaks, use Other Corrections to remove these peaks.



In OMNIC Help Topics find “water” in the Index and go to “H2O and CO2 correction.”

Only those portions of the spectrum which are within the selected region (or displayed region if no region is selected) and within any of the regions you specified for the library using the Region Setup tab of the Library Setup dialog box will be included in the search. If the spectral range of the spectrum is broader than that of the library spectra, use the region tool to select the region of the spectrum that coincides with the library spectra before you start the search. You can also use the view finder to display the region to search. The Search command operates on the selected region, or on the displayed region if a region is not selected.



In OMNIC Help Topics find “spectral region” in the Index and go to “Region tool” or “View finder.”

How do I create a spectral library?



If you are using OMNIC, use the Create Library button on the Library Names tab of Library Manager (available through the Analyze menu) to create a user library.



Once a library is created, you can add spectra to it with Add To Library in the Analyze menu or by dragging the spectrum to the library’s book on the Library Names tab of Library Manager. You can use a search library you create just as you would a commercial library to identify unknown spectra. You can use a QC library to verify the composition of a sample. If you create a scrapbook library, you can find spectra in it by searching for text (but not by spectral searching).

When you create a library, you determine the kinds of information that will be saved with it.



In OMNIC Help Topics find “library” in the Index and go to “Creating a user library” and “Adding spectra to a user library.”

How can I display a library spectrum in a spectral window?



If you are using OMNIC, locate and select the spectrum in Library Manager (available through the Analyze menu) and then click the Add To Window button, or go to the Library Spectra tab of Library Manager, display the desired spectrum on the tab and then double-click the spectrum.



In OMNIC Help Topics find “library” in the Index and go to “Working with libraries.”

How can I find a compound in a commercial library?



If you are using OMNIC, Library Manager in the Analyze menu lets you search for the compound name. After you select the library on the Library Names tab, use the features on the Search For Text tab to locate the spectrum. Type the text to search for in the Text In Selected Item box, and then choose Search. The search results appear in the table based on the options you have set. To see information about a found spectrum, double-click its row in the table.



In OMNIC Help Topics find “library” in the Index and go to “Searching a library for text.”

You can use the extended search feature (available on the Extended Search tab of the Library Setup dialog box) to find library spectra by searching for text in any field included in the library. For example, some libraries have fields for molecular weight, boiling point or manufacturer.



In OMNIC Help Topics find “extended search” in the Index and go to “Using extended search.”

What is the easiest way to collect sample spectra and add them to a spectral library?



If you are using OMNIC, use the Collect Spectrum button on the Library Names tab of Library Manager (available through the Analyze menu) to collect a spectrum and add it to a user library. The software automatically sets the experiment parameters (for example, Resolution) so that the spectrum will be compatible with the selected library. This allows you to collect and add a compatible spectrum in one step instead of three (using Experiment Setup to set the parameters, Collect Sample to collect the spectrum and Add To

Library to add the spectrum to the library).

What does the search expert do?

It determines the search algorithm to use, searches the spectral region from 2600 to 450 wavenumbers and then displays the specified number of library spectra that best match the unknown spectrum, plus comments about the search results. For example, the search expert may tell you that the best match is excellent but the second best match is also similar to the unknown. You will be able to display the list of matches to see their match values and index numbers.

Opening, saving and deleting spectra



How do I open a stored spectrum?

Choose Open from the File menu, locate the spectrum or spectra you want to open, select the filenames of the spectra and then choose OK. You can hold down the Control key to select multiple files.

In OMNIC Help Topics find “spectrum” in the Index and go to “Opening spectra.”

How can I save my collected spectra automatically?



Choose Experiment Setup from the Collect menu and turn on Save Automatically on the Collect tab (Save Automatically is on by default). Specify a base name for naming the saved spectral data files in the Base Name box. A sequential number will be appended to the base name when the spectra are saved. If you want the interferograms saved with the spectra, turn on Save Interferograms. Individual spectra are saved with the extension .SPA.



Collecting a Spectrum (available through Learning OMNIC)...
“Preparing the Software”



In OMNIC Help Topics find “saving, spectra” in the Index and go to “File handling.”

Where should I save my spectra?

You have several options for saving spectra; you may choose to use more than one.

For a permanent record of the spectrum and any other information you want to record, use a report notebook.



In OMNIC Help Topics find “report notebook” in the Index and go to “Adding a report to a notebook.”

You can also place spectra in descriptively named user libraries that you create. Keeping spectra in libraries allows you to find them by searching for text contained in the information saved with the spectra.

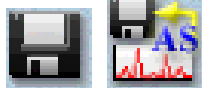


In OMNIC Help Topics find “spectrum” in the Index and go to “Adding a spectrum to a user library.”

Note

When you add a spectrum to user library whose resolution is lower, the spectrum is deresolved. For this reason it may be better in some cases to save your sample spectra as files on the hard disk and consider the copies of them added to a user library to be for searching purposes only. ▲

We recommend that you create descriptively named folders (directories) on your hard disk for different categories of spectra. For example, you could have a folder for each project you are working on, for each of your clients, for each laboratory application, or for each sample type. See your Windows documentation for information about creating directories. You can specify which folder to use when you use Save or Save As in the File menu to save spectra. This will make it easier to find a spectrum in a particular category when you





use Open in the File menu to open a spectrum.



In OMNIC Help Topics find “spectrum” in the Index and go to “Saving spectra using new filenames.”

How can I save several spectra in one file as a group?



Select the spectra and then choose Save Group from the File menu. To select more than one spectra, hold down the Control key and click each spectrum you want to select with the selection tool, and then release the Control key. Spectral groups are saved with the extension .SPG.



In OMNIC Help Topics find “saving, spectra” in the Index and go to “Saving a group of spectra.”

How can I delete stored spectra?



Choose Delete Files from the File menu to display the Delete Files dialog box. Locate and select the spectral data files (with the extension .SPA, or .SPG for spectral group files) you want to delete and then choose OK.



In OMNIC Help Topics find “spectra” in the Index and go to “How to delete files.”

Can I delete an entry from a report notebook?

No. OMNIC's report notebooks are similar to traditional laboratory notebooks in that information you add to them becomes part of the permanent record of your work.



You can delete an entire notebook, however, by deleting the entire notebook file. Choose Delete Files from the File menu to display the Delete Files dialog box. Locate and select the directory containing the notebook data files (with the extension .NBK). You will have to set the List Files Of Type box to All (*.*) to see .NBK files listed. Select the file you want to delete and then choose OK.

Printing

How can I specify a printer for printing information?



Use Printer Setup in the File menu. See your Windows documentation for details on setting the printer parameters.



In OMNIC Help Topics find “printer” in the Index and go to “Setting up the printer.”

How can I create and print reports of my work?



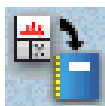
Use the commands in the Report menu. First use Template to select, edit or create a template for the report. Then use Preview/Print Report to view the report as it will appear on paper. Click the Print button to print the report.



View Creating Reports (available through Learning OMNIC) to learn about OMNIC's report features.



In OMNIC Help Topics find “template” in the Index and go to “Selecting, editing or creating a report template,” or find “report, previewing or printing” and go to “Previewing or printing a report.”



You can also use Add To Notebook to add the report to a report notebook. You can then print the report with the Print button when you view the notebook using View Notebook.



In OMNIC Help Topics find “report” in the Index and go to “Adding a report to a notebook.”

How can I preview spectra or other information before printing?



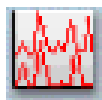
Use Preview/Print Report in the Report menu to view a report as it would appear on paper. The report is displayed using the current report template; that is, the template you specified with Template or the one you are viewing and working with. If the report is displayed as you want it to appear on paper, you can print it by using the Print button.



In OMNIC Help Topics find “template” in the Index and go to “Selecting, editing or creating a report template,” or find “report, previewing or printing” and go to “Previewing or printing a report.”

Displaying spectra

How can I select more than one spectrum at a time?



After selecting the first spectrum by clicking it, hold down the Control key while you click each additional spectrum. You can also choose Select All from the Edit menu to select all the spectra in the window that are not hidden.



In OMNIC Help Topics find “spectra” in the Index and go to “Selection tool” or “Selecting all the spectra in a spectral window.”

How can I specify colors for displaying spectra?



Choose Options from the Edit menu, click the View tab and then choose Colors. In the Colors dialog box click the color next to the spectrum number for which you want to specify the color and then click the desired color in the color array. To specify the color for selected spectra, click the color next to Selected Spectrum and then click a color. Typically red is the color reserved for displaying selected spectra.



In OMNIC Help Topics find “spectra” in the Index and go to “Specifying colors for spectra and other features.”



You can also specify colors for displaying spectra in a particular spectral window. Start by selecting the spectra for which you want to specify a color, and then choose Display Setup from the View menu. Click the desired color in the color array and then choose OK. When the spectra are no longer selected, such as after you select a different spectrum, they will be displayed in the color you clicked.



In OMNIC Help Topics find “spectra” in the Index and go to “Selecting a color for the currently selected spectra.”

What is the difference between the Display Setup parameters and the Window options?



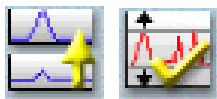
The parameters in the Display Setup dialog box affect the currently active spectral window only. The options in the Window options (in the Options dialog box, available through the Edit menu) affect all the new spectral windows that you create. After you create a new spectral window, you can change the way spectra are displayed in it by using Display Setup in the View menu.



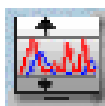
In OMNIC Help Topics find “display parameters” in the Index and go to “Setting the display parameters,” or find “Window options” and go to “Window options.”

What can I do with the “Scale” commands in the View menu?

By using the appropriate command, you can display spectra so that they are easier to see or compare.



Full Scale displays the spectra so that they perfectly fit their panes vertically. Automatic Full Scale does this automatically when you change the display with the view finder or selection tool. The Y-axis displayed corresponds to the selected spectrum.



Common Scale displays all the spectra so that they are not cut off at the top or bottom and use the same Y scale. This allows you to compare the band intensities of different spectra.



Match Scale changes the Y scale of the spectra to be the same as that of the selected spectrum. (The selected spectrum’s scale is not changed.) This allows you to compare the band intensities of different spectra.



Offset Scale shifts the spectra vertically so that they overlap less, making them easier to see.

When you use these commands, keep in mind that the current Y-axis is always accurate for the currently selected spectrum but may not apply to other spectra in the window.



In the OMNIC Help Topics Index...

For information about Full Scale or Automatic Full Scale, find “spectra” and go to “Displaying spectra full scale” or “Displaying spectra full scale automatically.”

For information about Common Scale, find “spectra” and go to “Displaying spectra using the same Y-axis.”

For information about Match Scale, find “spectra” and go to “Matching the Y scale of a spectrum.”

For information about Offset Scale, find “spectra” and go to “Displaying spectra vertically offset.”

How can I zoom in on an area of a spectrum?



Draw a box around the area using the selection tool and then click inside the box.



You can also use the Expand/Contract buttons at the left end of the view finder or drag the regions markers in the view finder to display a smaller spectral region. You can press and hold down the mouse button during these operations to continuously expand or contract the display.

To expand and contract the spectra horizontally about the center, use the view finder's Horizontal Expand/Contract buttons (left-most). To expand and contract the spectra vertically about the center, use the Vertical Expand/Contract buttons (right-most).



The Roll/Zoom Window in the View menu also expands or contracts an area. In OMNIC Help Topics find “Roll/Zoom Window command” in the Index and go to “Rolling and zooming spectra” for more information about expanding and contracting a spectral region.

How can I move a spectrum up or down in its pane to see it better?



Use the selection tool to drag the spectrum up or down. The Roll/Zoom window available in the View menu to move a spectrum up or down.



In OMNIC Help Topics find “Roll/Zoom Window command” in the Index and go to “Rolling and zooming spectra” for more information about moving spectrum.

How can I move a spectrum into another spectral window?



Use the selection tool to drag the spectrum from one spectral window to another. A copy of the spectrum appears in the second window, and the original spectrum remains in the first window. You can also copy or cut the spectrum using Copy or Cut in the Edit menu and then paste it into another spectral window using Paste.



In OMNIC Help Topics find “spectrum” in the Index and go to “Selection tool,” or find “pasting, spectrum” and go to “Pasting items.”

How can I move a stacked spectrum into another pane?



Use the selection tool to drag the spectrum from one pane into another.



In OMNIC Help Topics find “spectrum” in the Index and go to “Selection tool.”

How can I find the X and Y values of a point in a spectrum?



Use the spectral cursor tool to click the point. The values are displayed in the readout above the palette.



In OMNIC Help Topics find “X and Y values” in the Index and go to “Spectral cursor tool.”

How can I find the height of a peak?



Use the peak height tool to click the top of the peak. Then drag the baseline handles to adjust the baseline used for the measurement. The corrected (measured above the baseline) and uncorrected height values appear in the readout above the palette.



In OMNIC Help Topics find “peak” in the Index and go to “Peak height tool.”

How can I find the area of a peak?



Use the peak area tool to drag across the peak. Then drag the baseline handles to adjust the baseline used for the measurement. The corrected (measured above the baseline) and uncorrected area values appear in the readout above the palette.



In OMNIC Help Topics find “area” in the Index and go to “Peak area tool.”

Correcting spectra

Should I correct the baseline of my spectrum?

If a baseline is sloped or curved or significantly above zero absorbance (or below 100% transmittance), a likely cause is how the sample was prepared. By correcting the baseline, you can often avoid having to prepare the sample again and collect a new spectrum.

Correcting a baseline will give you better results when you search the spectrum against a library, subtract the spectrum from another spectrum, find peaks in the spectrum or quantify components in the spectrum.



Collecting a Spectrum (available through Learning OMNIC)...
“Common Problems with IR Spectra”

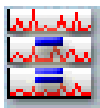


In OMNIC Help Topics find “baseline” in the Index and go to “Correcting a baseline manually.”

Subtracting, adding, multiplying and dividing spectra

How can I subtract a spectrum from another spectrum?

Use Subtract in the Process menu whenever you want to subtract one spectrum from another. Subtract is commonly used to remove spectral features of solvent residues or pure components from the spectrum of a mixture of compounds.



Select the spectrum from which you want to subtract spectral features; this is the sample spectrum. Then hold down the Control key and select the spectrum with the features you want to subtract from the sample spectrum; this is the reference spectrum.

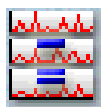
Note Subtract is available only when two spectra are selected. ▲

Choose Subtract from the Process menu. The difference spectrum is displayed full scale in the bottom pane. This spectrum is the result of subtracting the reference spectrum from the sample spectrum using the subtraction factor shown to the left of the result. If you are not satisfied with the subtraction result, you can change the subtraction factor.



In OMNIC Help Topics find “spectrum” in the Index and go to “Subtracting spectra.”

What should I use subtraction for?



Subtract is commonly used to remove spectral features of solvent residues or pure components from the spectrum of a mixture of compounds. When you use Subtract, the software calculates data point by data point the difference between the two.

Spectral subtraction is useful in a variety of situations, for example...

- Eliminating solvent peaks in a spectrum of a sample that is dissolved in a solvent.
- Separating components from a sample that is a mixture of two or more components.
- Identifying an unknown contaminant by subtracting out the known sample material.
- Ensuring quality by subtracting an original batch sample spectrum from a spectrum from the next batch.

What other mathematical operations can I perform on my spectra?



You can manipulate spectra using any of the common math operations. Use Spectral Math in the Process menu to perform these operations on one or two selected spectra. You specify the operations to perform by typing a sequence of mathematical symbols and numbers. The software performs the operations on the Y values of the data points in the spectrum or spectra and then displays the result spectrum.

When you choose the command, the Spectral Math window appears allowing you to type the desired operations in the Operation text box. You can also select one of the example operations provided in the Operation drop-down list box.



View Using Spectral Math (available through Learning OMNIC).



In OMNIC Help Topics find “spectrum” in the Index and go to “Performing arithmetic operations on spectra.”

Customizing OMNIC



How can I customize my OMNIC software?

You can use Options in the Edit menu to set options that determine how the software operates. You can also customize the menus and the toolbar using Edit Menu and Edit Toolbar in the Edit menu. Use Save Configuration As in the File menu to save your customized settings in a configuration file. You can then open the file later to reset OMNIC to your preferences in one step.

Collecting a Spectrum (available through Learning OMNIC)...
“Preparing the Software”

In the OMNIC Help Topics Index...

Find “options” and go to “Customizing OMNIC by setting options.”

Find “menu” and go to “Customizing a menu.”

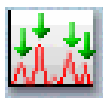
Find “toolbar” and go to “Customizing a toolbar.”

Find “configuration” and go to “Saving a configuration.”

Find “configuration” and go to “Opening a configuration.”

Other questions

How can I find and label peaks in spectra?



Use Find Peaks in the Analyze menu to find and label peaks above a specified threshold.



You can also use the annotation tool to label individual peaks.



In OMNIC Help Topics find “peaks” in the Index and go to “Finding peaks above a specified height,” or find “label” and go to “Annotation tool.”

How can I close a task window (such as the Find Peaks window)?



Click the Close button (if available) in the upper-right corner of the window. You can also double-click the button at the left end of the window’s title bar (if the window is *not* maximized) or the button at the left end of the menu bar (if the window is maximized).



In OMNIC Help Topics find “task window” in the Index and go to “Task windows.”

How can I select a spectral region for an operation?



Use the region tool to drag across the region in the pane.



In OMNIC Help Topics find “spectral region” in the Index and go to “Region tool.”

How can I display information about how a spectrum was collected and processed?



Select the spectrum and then click the Information button to the left of the title box. You can also double-click the spectrum's title in the title box.



In OMNIC Help Topics find “collection and processing information” in the Index and go to “Collection and processing information.”



If you want this kind of information displayed in a spectrum's pane, choose Display Setup from the View menu, turn on Sampling Information and then specify the types of information you want displayed by turning on options in the Sampling Information box.



In OMNIC Help Topics find “displaying, sampling information” in the Index and go to “Displaying sampling information.”

How can I copy a spectrum and paste it into a text document?



Select the spectrum and choose Copy from the Edit menu. This places the spectrum on the Clipboard in the form of a Windows metafile (this is the file format with the most flexibility for pasting into other programs). You can then paste the spectrum into a document by using a word processing program.



In OMNIC Help Topics find “copying, spectrum” in the Index and go to “Copying items.”

How can I get on-line Help while using the software?

The OMNIC on-line Help system lets you quickly find answers to your questions about using the software. There are several ways to enter the Help system:

- To see information about a particular feature in OMNIC, click the feature using the right mouse button. A brief description of the feature appears, and in most cases one or more buttons that you can click to display more detailed information. Click the Discussion button to display a complete discussion of the feature (or the dialog box or window that contains the feature). Click the How To button to display a step-by-step procedure for using the feature (or the dialog box or window that contains the feature).
- You can press the F1 function key at any time to see a discussion topic for the currently displayed or selected feature, dialog box or window.
- If a dialog box or window contains a Help button, click it to see information about the dialog box or window (or the command that displayed it).
- To see the Contents of the OMNIC Help system, choose OMNIC Help Topics from the Help menu.



Quick Answers to Your Questions About Using the Spectrometer

This chapter answers some common questions about using your spectrometer. Each answer is followed by a reference telling you where to go for more information.

Do I need to use an energy screen with my detector?

If you are using a highly sensitive detector such as a PbSe, Si, MCT-A or InSb detector and your experiment deals with information from a broad range of frequencies, you may wish to use an energy screen to prevent the detector from becoming saturated or producing a distorted signal.



Spectrometer Help Topics...

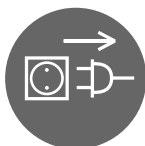
“Installing an energy screen” in “Setting up experiments”

When do I need to open the spectrometer cover?

You need to open the spectrometer cover to change sources. Also, you need to open the cover if you are installing a spectrometer component such as a laser.

Warning

Do not operate the spectrometer with the main cover removed. The cover protects you from exposure to laser light and live electrical connections. ▲



If you must open the main cover for maintenance or service reasons, always turn off the spectrometer power and unplug the power cord first.

Important

If you have a CsI beamsplitter, protect it from the effects of water vapor by minimizing the time that the cover is removed. ▲



Spectrometer Help Topics...

“Opening the main cover” in “Installing optional hardware”

When should I align the spectrometer?

Align the spectrometer in the following situations:

- The ambient temperature has changed by at least 5 Celsius degrees (about 9 Fahrenheit degrees).
- You are about to perform a spectrometer validation with Val-Q (or other software). This ensures that the validation is run with the best possible interferometer and electronics settings.
- The spectrometer power was turned off for more than a few minutes and has now been on for one hour.

Note

We recommend that you leave the power on continuously, but if you do need to turn it off, allow the spectrometer to warm up for one hour and then align it before collecting spectra. ▲

- The spectrometer has been on continuously for one week without being aligned. We recommended aligning your spectrometer once a week or, for optimum performance, once a day.

- You have just installed a laser, source, beamsplitter or detector.
- The detector signal intensity has dropped significantly from its usual level.
- You have just moved the spectrometer.



In OMNIC Help Topics find “aligning, spectrometer” in the Index and go to “Aligning the spectrometer.”



“Maintenance and Service” chapter...

“Aligning the spectrometer” in “Maintaining your spectrometer”

Does my detector need to be cooled with liquid nitrogen?

Detectors that have a dewar need to be cooled. Dewar detectors are fairly large metal cylinders with a hole in the top. These include MCT and InSb detectors. To determine if your detector requires cooling, open the detector compartment cover and see if the detector has a dewar.

If during a work session you find that the detector signal intensity is decreasing, the dewar may need to be refilled with liquid nitrogen.



Spectrometer Help Topics...

“Cooling a detector” in “Setting up experiments”

When should I change the desiccant (in sealed and desiccated spectrometers only)?

If your spectrometer is in use, check the performance of the desiccant by using the Check Desiccant button on the Diagnostic tab of the Experiment Setup dialog box. If the check indicates that the desiccant is no longer effective, replace it.



Spectrometer Help Topics...

“Checking and changing desiccant” in “Maintaining your spectrometer”

If your spectrometer is in storage, check the round, blue indicator on the desiccant holder under the beamsplitter compartment cover monthly. Change the desiccant if the indicator has turned pink.



See “Ordering parts” in Spectrometer Help Topics to find the part number for ordering desiccant bags. The desiccant holder under the beamsplitter compartment cover holds one bag.

Which source should I use?

Use the source that is appropriate for the spectral range of your experiment (determined by the ranges of the beamsplitter and detector). Thermo Electron offers a mid-IR to far-IR source (ETC) and a near-IR source (white light).



In OMNIC Help Topics find “source” in the Index and go to “Specifying the source type.”



“Spectrometer Basics” chapter...

“Selecting the right beamsplitter and detector” in “Using beamsplitters and detectors”

Should I turn off the spectrometer when I'm not using it?

We recommend that you leave the spectrometer on. This improves the thermal stability of the system and gives you more consistent results when you collect spectra.

How can I diagnose problems with the spectrometer?

The performance of the spectrometer is monitored while you collect spectra. If a problem occurs, a troubleshooting message appears.



See the “Troubleshooting” book in Spectrometer Help Topics for instructions for diagnosing spectrometer problems and ordering and replacing parts.

Note If you want to view the on-line videos to help you in troubleshooting a problem, put the Spectrometers Tutorials CD in the computer. ▲

You can also make a more thorough check on a spectrometer component by choosing Advanced Diagnostics from the Collect menu. This starts the Bench Diagnostics program, which provides information about the status of the component as well as troubleshooting information, replacement procedures and information about ordering replacement parts.



In OMNIC Help Topics find “diagnostics” in the Index and go to “Checking bench components.”

How do I replace parts in the spectrometer?



Spectrometer Help Topics...
“Replacing parts”



Maintenance and Service

This chapter describes maintenance and service routines that you can perform on the spectrometer. We define maintenance as an occasional procedure you perform to keep the spectrometer running efficiently. We define service as a procedure to replace a failing part in the spectrometer.



Warning

Perform *only* those procedures described in this chapter. If there are other problems, contact Thermo Electron at one of the numbers below. Outside the U.S.A. call your local sales or service representative. Telephone numbers for all Thermo Electron Customer Support offices are provided with your system.

Phone: 1-800-642-6538 (U.S.A.) or
+608-273-5015 (worldwide)

Fax: +608-273-6883 (worldwide)

E-mail: techsupport.analyze@thermo.com

World Wide Web: <http://www.thermo.com/spectroscopy> ▲



See Spectrometer Help Topics for instructions for diagnosing spectrometer problems and ordering and replacing parts.

Running diagnostic tests on spectrometer components

If your system is not performing properly, you can use the Diagnostic tab in the Experiment Setup dialog box to check the performance of spectrometer components and determine the source of the problem.

Note OMNIC continuously monitors the operation of the spectrometer hardware and shows its status with the Bench Status indicator below the menu bar of the OMNIC window. See “The OMNIC window” in the “Your First Experiment” chapter for more information. ▲

Follow these steps to run the spectrometer diagnostic tests:

1. Make sure the main sample compartment is empty.

Remove any samples and sampling accessories (except a transmission sample holder).

2. Choose Experiment Setup from the Collect menu or the toolbar.

The Experiment Setup dialog box appears.

3. Click the Diagnostic tab.

The Diagnostic tab appears showing icons for the major components of the spectrometer with a live display of the signal from the detector.

- 4. To run the diagnostic tests for a component, click that component's indicator icon.**

A dialog box appears showing the status of the component. If the operating values for the component are within proper limits, a check mark appears in the Status column. If the value is outside the acceptable range, an X appears in the Status column.

- 5. When you are finished viewing the information, choose OK.**

Maintaining your spectrometer



This section describes how to use the OMNIC software to align the spectrometer and accessories and run performance tests.

View “Maintaining your spectrometer” in Spectrometer Help Topics for instructions for other common maintenance procedures, such as changing desiccant, cleaning the purge filter and cleaning the outside of the spectrometer.

Aligning the spectrometer

To ensure optimum system performance (high signal intensity, low noise and good sensitivity), you should align the spectrometer at least once a week using the OMNIC software. See the answer to the question “When should I align my spectrometer” in the preceding chapter for more information.

Note If you have just turned on or moved the spectrometer, wait 15 minutes (one hour for best results) before you align it so that it will have time to stabilize. ▲

To align the spectrometer:

- 1. Remove any sample or accessory from the sample compartment (except a transmission sample holder).**

The beam path must be clear during alignment. Open the sample compartment as briefly as possible to maintain a constant purge.

- 2. Choose Experiment Setup from the Collect menu or the toolbar.**

The Experiment Setup dialog box appears.

- 3. Make sure Sample Compartment on the Bench tab is set to Main.**

- 4. Set Gain on the Bench tab to 1.**

Important Do not use Autogain. ▲

- 5. Click the Align button on the Diagnostic tab.**

When you click the Align button, the system begins to optimize the detector signal for maximum energy throughput. Alignment should take 2 to 4 minutes.

The live display of the detector signal changes as each interferogram is collected. The positive peak and negative peak intensities are shown next to Max and Min above the live display. The interferogram location will be shown next to Location (unless Single Beam is selected on the Bench tab).

- 6. When the alignment is finished, close the Experiment Setup dialog box.**

Aligning an accessory

You can also align accessories that mount inside a sample compartment. (This practice does not include Smart Accessories, which do not require alignment.) First align the spectrometer without the accessory installed, as described in the preceding section. Then set Sample Compartment on the Bench tab of the Experiment Setup dialog box according to the accessory location. Set Gain to a value that gives a signal intensity that is appropriate for the accessory. ATR (attenuated total reflection) and diffuse reflection accessories typically use a Gain setting of 2 or 4.

If you are not satisfied with the signal intensity after alignment, you can manually align most accessories to maximize the signal. For complete instructions, see the manual that came with the accessory.

When you manually adjust an accessory, watch the largest interferogram peak in the live display on the Bench tab. The larger this peak, the better is the signal intensity.

Note The largest interferogram peak can be positive or negative. ▲

If you are unable to see the display, turn on Tone on the Bench tab before adjusting the accessory. The tone reaches its highest pitch when the signal is maximized.

Checking spectrometer performance

You can use the performance test to track long-term spectrometer performance. Run the test after you have installed the system and then weekly. Keep a record of the actual values obtained. When you run the test, the software measures the response of the spectrometer optics and atmospheric absorptions inside the spectrometer and then collects a “sample” spectrum with no sample in place. The result is a “100% line,” a display of system noise that appears as a generally flat line at 100% transmittance.

Follow these steps to perform the performance test:

1. Make sure the main sample compartment is empty.

Remove any samples and sampling accessories (except a transmission sample holder).

2. Exit OMNIC.

This ensures that the Bench Diagnostics software will run correctly.

3. Start the Bench Diagnostics software.

To do this, click the Start button on the Windows taskbar, point to Programs (All Programs in Windows XP), point to the Thermo Nicolet folder and then choose Bench Diagnostics.



See “Performing advanced diagnostic tests” in the “Troubleshooting Hardware Problems” chapter for more information about running the diagnostics software.

4. Click the Performance Tests button and then follow the instructions that appear on the screen.

Note If the noise readings are greater than normal or have changed significantly, call the Thermo Electron Technical Support for assistance. Outside the U.S.A., call your local service representative. Telephone numbers for all Thermo Electron offices are provided with your system. ▲

If special performance tests are available for your spectrometer, a button labeled “Extended Tests” (or another appropriate name) will appear. Click this button and follow the instructions that appear on the screen to perform the tests.

Servicing your spectrometer

Some spectrometer components—including the detector, light source, laser and power supply—were designed so you can replace them yourself if they fail.

Note The diagnostics software will alert you to failing components. For instructions for diagnosing spectrometer problems, ordering parts and replacing parts, choose Spectrometer Help Topics from the Help menu. ▲

If the source, laser module, electronics module or power supply must be replaced, refer to the replacement parts list made available when you choose Spectrometer Help Topics from the Help menu. Call 800-642-6538 or 608-276-6373 to order the replacement assembly. If you are outside the U.S.A., contact your local Thermo Electron office. Telephone numbers for all Thermo Electron Customer Support offices are provided with your system.



Troubleshooting Software Problems

The OMNIC software automatically and continuously checks the status of your system. If a problem is found, a message automatically appears giving you access to more information. This chapter lists some simple troubleshooting measures you can take to solve software problems with OMNIC. If the action does not solve the problem, call your Thermo Electron service office.



In OMNIC Help Topics find “troubleshooting” in the Index and go to “Troubleshooting” for more information.

Problem	Possible Cause	Solution
You cannot add a spectrum to a user library.	The resolution of the spectrum is lower (higher numerical value) than that of the library.	Collect the spectrum at the same resolution as the library (first set Resolution on the Bench tab of the Experiment Setup dialog box) and then add it to the library.
	The spectrum is from a commercial library.	Only spectra you collect can be added to a user library. Commercial libraries cannot be altered and the spectra contained in them cannot be copied to other libraries.
The Quantify command is dimmed.	No quantitative analysis method is selected.	Select a quantitative analysis method using Quant Setup in the Analyze menu.
	No spectrum is selected.	Select a single spectrum.
	The quantitative analysis method is not appropriate for the selected spectrum.	Select an appropriate method for the selected spectrum.

Problem	Possible Cause	Solution
After data collection, a message says the sample and background spectra have the wrong resolution.	The resolution of the current background spectrum does not match the resolution selected for the sample spectrum collection.	Change the Resolution to match the background and collect the spectrum again. Use the Resolution parameter on the Collect tab of the Experiment Setup dialog box.
An experiment provided with OMNIC does not produce good results.	The parameter settings in the experiment file have been changed so that the experiment is no longer useful.	Restore the experiment to its default settings: First open the experiment using Experiment Setup and save it using a new filename if you do not want to overwrite it. Then open the experiment in the FACTORY directory whose filename is same as the original experiment and save it in the OMNIC\PARAM directory.
The desired experiment does not appear in the Experiment drop-down list box.	The experiment was installed with the software but has not yet been opened.	If the experiment was designed for a Smart Accessory, install the accessory; the experiment will be opened automatically and will appear in the Experiment drop-down list box. If the experiment was not designed for a Smart Accessory, open it using Experiment Setup; it will be added to the list.
Libraries created with previous version of OMNIC are not listed in the Library Setup dialog box.	The libraries are not in one of directories listed in the dialog box (typically LIBS within the OMNIC directory).	Use the Add Directory button on the Search Libraries tab to add the directory.



Troubleshooting Hardware Problems

OMNIC continuously monitors the operation and status of your spectrometer and informs you if a problem is found. The Bench Status indicator below the menu bar shows the status of the spectrometer operation. When OMNIC performs a check and detects a problem, the Bench Status indicator is displayed as a yellow circle or a red X along with a message alerting you to the problem.



If the indicator is a yellow circle, an MCT detector in the spectrometer has become warm. A message appears explaining the problem and allowing you to access information about correcting it.



If the indicator is a red X, the spectrometer has failed a diagnostic test and requires corrective action. A message appears explaining the problem and allowing you to access information about correcting it.

This chapter lists some simple troubleshooting measures you can take to solve problems with the spectrometer. The Bench Diagnostics software is described at the end of the chapter. If your actions do not solve the problem, call Thermo Electron.



For more troubleshooting information see the “Troubleshooting” book in Spectrometer Help Topics.

Warning

Always follow the safety precautions included in this manual and in your *Spectrometer Safety Guide* when performing any of the following troubleshooting procedures. ▲

Problem	Possible Cause	Solution
<p>Data is not displayed during collection.</p>	<p>The data cable between the spectrometer and computer is not properly connected.</p> <p>The spectrometer is out of alignment.</p> <p>The laser is not functioning.</p> <p>The spectrometer is overheated. (You can check whether the temperature of the electronics board is within the acceptable range by clicking the electronics indicator on the Diagnostics tab of the Experiment Setup dialog box.)</p>	<p>Turn the spectrometer power off and check the data cable connections.</p> <p>Align the spectrometer using the Align button on the Diagnostic tab of the Experiment Setup dialog box.</p> <p>Click the laser indicator on the Diagnostic tab of the Experiment Setup dialog box to check the laser operation. Call Thermo Electron to order a replacement laser if necessary. See the “Ordering parts” and “Servicing your spectrometer” books in Spectrometer Help Topics to find part number and ordering and installation instructions.</p> <p>Make sure the cooling vents on the back of the spectrometer are not blocked. Make sure the ambient temperature is between 16° and 27°C (60° and 80°F).</p>

Problem	Possible Cause	Solution
<p>The baseline is not stable.</p>	<p>The purge flow rate is too high.</p> <p>The spectrometer is out of alignment.</p> <p>The laser detector is misaligned.</p> <p>The ambient conditions are outside the allowed ranges.</p> <p>The desiccant cannot absorb any more water vapor.</p> <p>The spectrometer cover was recently opened.</p>	<p>Lower the flow rate until the baseline is stable.</p> <p>Align the spectrometer using the Align button on the Diagnostic tab of the Experiment Setup dialog box.</p> <p>Use the Bench Diagnostics software to check the laser levels for proper balance. If the levels are out of tolerance, align the spectrometer using the Align button on the Diagnostic tab of the Experiment Setup dialog box. If the levels remain out of tolerance, call Thermo Electron for service.</p> <p>Make sure the conditions meet the requirements given in the “Environmental Considerations” chapter of <i>Preparing Your Site</i>.</p> <p>Check the humidity indicator and replace the desiccant and indicator if needed.</p> <p>Allow the spectrometer to purge for 3 to 5 minutes after the cover is closed.</p>

Problem	Possible Cause	Solution
<p>The status indicators on the spectrometer cover do not light when the spectrometer is turned on.</p>	<p>The power supply connection on the back of the spectrometer is loose.</p>	<p>Turn off the spectrometer and check the connections between the spectrometer and the power supply. Make sure the lock ring is tightened finger-tight.</p>
	<p>The spectrometer is not plugged in.</p>	<p>Make sure the power cord is securely connected to the power supply and a working outlet or power strip.</p>
	<p>The power cord is not properly rated for your electrical service.</p>	<p>Make sure the power cord is appropriate for your AC power source. In Spectrometer Help Topics see “Miscellaneous parts” in the “Ordering parts” book for power cord descriptions and part number information.</p>
	<p>The ground prong on the power cord has been removed or is defective.</p>	<p>Replace the power cord. In Spectrometer Help Topics see “Miscellaneous parts” in the “Ordering parts” book for power cord descriptions and part number information.</p>
	<p>The power cable or power supply is defective.</p>	<p>Replace the power cord. If the problem persists, replace the power supply. In Spectrometer Help Topics see “Changing the power supply in the “Replacing parts” book.</p>

Problem	Possible Cause	Solution
System does not scan.	Laser is flickering.	Click laser indicator on Diagnostic tab of Experiment Setup dialog box to check laser operation. Call Thermo Electron for assistance.
The system scans normally but gives very low signal intensity.	<p>The spectrometer is out of alignment.</p> <p>The moving mirror velocity is set too high.</p> <p>There is no interferogram.</p> <p>The beam path is obstructed.</p> <p>The aperture is set incorrectly on a Nicolet 6700.</p> <p><i>Continued on next page...</i></p>	<p>Align the spectrometer using the Align button on the Diagnostic tab of the Experiment Setup dialog box.</p> <p>Set Velocity on the Bench tab of the Experiment Setup dialog box to a lower velocity.</p> <p>If the Source status indicator is off, click the source indicator on the Diagnostic tab of the Experiment Setup dialog box to check the source current and voltage. If the Source indicator is on, check the interferogram on the Bench tab of the Experiment Setup dialog box; if the interferogram is not present, check the beam path and detector.</p> <p>Remove the obstruction.</p> <p>Check the Aperture parameter on the Bench tab of the Experiment Setup dialog box. For an MCT-A, MCT-B, InSb, PbSe, Si, or InGaAs detector, set Aperture to 32. For a DTGS detector, set Aperture to 100.</p>

Problem	Possible Cause	Solution
	<p data-bbox="468 213 625 239"><i>...continued</i></p> <p data-bbox="468 288 882 579">The spectrometer is overheated. (You can check whether the temperature of the electronics board is within the acceptable range by clicking the electronics indicator on the Diagnostics tab of the Experiment Setup dialog box.)</p> <p data-bbox="468 626 833 730">A sampling accessory is not installed properly or is not aligned.</p> <p data-bbox="468 777 851 840">Detector and beamsplitter are not compatible.</p>	<p data-bbox="913 288 1367 465">Make sure the cooling vents on the back of the spectrometer are not blocked. Make sure the ambient temperature is between 16° and 27°C (60° and 80°F).</p> <p data-bbox="913 626 1379 765">Make sure the accessory is installed correctly and, if necessary, align it. See the instructions that came with the accessory.</p> <p data-bbox="913 812 1390 916">Make sure that selected detector and beamsplitter are compatible. Change detector or beamsplitter if necessary.</p>

Problem	Possible Cause	Solution
<p>The signal intensity is low. (Also, the Scan indicator may flash intermittently and the spectrometer alignment may fail.)</p>	<p>The source is glowing unevenly.</p>	<p>Check to see if the source element is glowing evenly. Order a replacement source if needed.</p>
	<p>The beam path is obstructed.</p>	<p>Remove the obstruction.</p>
	<p>The sample compartment windows are fogged.</p>	<p>Replace the windows. In Spectrometer Help Topics view “Replacing sample compartment windows” in “Replacing parts” to find part number, ordering and installation instructions.</p>
	<p>The beamsplitter is fogged.</p>	<p>Check the laser signals by clicking the laser indicator on the Diagnostic tab of the Experiment Setup dialog box. <i>For a Nicolet 6700</i>, replace the beamsplitter, if necessary. <i>For a Nicolet 4700</i>, contact technical support.</p>
	<p>The spectrometer is out of alignment.</p>	<p>Align the spectrometer using the Align button on the Diagnostic tab of the Experiment Setup dialog box.</p>
	<p>A sampling accessory is not installed properly.</p>	<p>Make sure the accessory is installed according to the instructions that came with it.</p>
<p>A detector that was just installed is not seated properly.</p>	<p>Make sure the hole and slot in the detector plate fit over the pins on the spectrometer baseplate. See “Replacing the detector” in the “Servicing your spectrometer” book in Spectrometer Help Topics.</p>	

Problem	Possible Cause	Solution
The source status indicator is off.	The source is burned out.	Click the source indicator on the Diagnostic tab of the Experiment Setup dialog box to verify that the source is burned out. Call Thermo Electron to order a replacement source. In Spectrometer Help Topics view “Replacing your source” in “Replacing parts” to find part number, ordering and installation instructions.
There is frost on the outside of the detector.	The insulating vacuum chamber of the dewar has begun to leak.	If you suspect your detector has a vacuum leak, view “Detector does not stay cooled” in the “Troubleshooting” book in Spectrometer Help Topics.
You encounter problems when selecting external detectors on an AEM, GC interface or microscope.	<p>A custom detector is selected on the Bench tab of the Experiment Setup dialog box.</p> <p>The detector cable is loose at the accessory connector (on the rear of the spectrometer or on the back wall of the sample compartment).</p>	<p>Set Detector to None on the Bench tab of the Experiment Setup dialog box.</p> <p>Check and tighten the cables.</p>

Problem	Possible Cause	Solution
<p>The Scan status indicator does not flash; the system is not scanning.</p> <p>Note: After 1 hour without data collection activity, the interferometer stops scanning and the Scan light stays on. This is normal. Any data collection activity will cause the interferometer to begin scanning.</p>	<p>The spectrometer is turned off.</p> <p>The spectroscopy software has not been started.</p> <p>The spectrometer is out of alignment.</p> <p>The electronics module needs to be reset.</p> <p>The laser is flickering.</p> <p>The laser is off.</p> <p><i>Continued on next page...</i></p>	<p>Turn on the spectrometer power.</p> <p>Start OMNIC (or other software you are using).</p> <p>Align the spectrometer using the Align button on the Diagnostic tab of the Experiment Setup dialog box.</p> <p>Turn off the power to the computer and the spectrometer. Leave the power off for 15 seconds. Turn on the spectrometer and wait until the start-up diagnostics finish. Then turn on the computer and restart OMNIC.</p> <p>Click the laser indicator on the Diagnostic tab of the Experiment Setup dialog box to check the laser operation. Call Thermo Electron for assistance.</p> <p>Turn off the spectrometer power, unplug the power cord, remove the spectrometer cover and make sure the laser cable is seated properly. See “Replacing the laser” in the “Servicing your spectrometer” book in Spectrometer Help Topics for instructions. Warning: Never open the spectrometer cover without first turning off the power and unplugging the power cord.</p>

Problem	Possible Cause	Solution
<p>The Scan status indicator does not flash, <i>continued...</i></p>	<p>The laser or electronics module is defective.</p> <p>The spectrometer is overheated. (You can check whether the temperature of the electronics board is within the acceptable range by clicking the electronics indicator on the Diagnostics tab of the Experiment Setup dialog box.)</p> <p>A component has failed.</p> <p>The beamsplitter is not properly seated.</p>	<p>Check the laser indicator on the Diagnostic tab of the Experiment Setup dialog box. If there is a red slash through the indicator, click the indicator to view information about the laser operation.</p> <p>If the laser frequency is outside the specified range, call Thermo Electron to have the electronics module replaced.</p> <p>If the laser voltage or current is outside the specified range, replace the laser. View “Replacing the laser” in the “Servicing your spectrometer” book in Spectrometer Help Topics for instructions.</p> <p>Make sure the cooling vents on the back of the spectrometer are not blocked. Make sure the ambient temperature is between 16° and 27°C (60° and 80°F).</p> <p>Call Thermo Electron for service.</p> <p><i>For a Nicolet 6700, check the beamsplitter and reposition it if necessary.</i></p> <p><i>For a Nicolet 4700, call Thermo Electron for service.</i></p>

Problem	Possible Cause	Solution
Laser status indicator is off.	<p>The beamsplitter compartment cover is not fully closed.</p> <p>The laser is burned out.</p>	<p>Close the beamsplitter compartment cover.</p> <p>Click the laser indicator on the Diagnostic tab of the Experiment Setup dialog box to verify that the laser is burned out. Call Thermo Electron to order a replacement laser. View “Replacing the laser” in the “Replacing parts” book in Spectrometer Help Topics to find part number and ordering and installation instructions.</p>
An error message appears when you try to scan.	<p>The light source is not working.</p> <p>An MCT detector is not cooled.</p> <p>The interferogram peak is not located at 1024 ± 16 data points on the Bench tab of the Experiment Setup dialog box.</p> <p>The beam path is obstructed.</p> <p>The data cable between the spectrometer and the computer is not properly connected.</p> <p>The detector and beamsplitter are not compatible.</p>	<p>Check the source indicator on the Diagnostic tab of the Experiment Setup dialog box. If necessary, replace the source.</p> <p>Check and cool the detector.</p> <p>Align the spectrometer. If the interferogram is still not located correctly, call Thermo Electron for service.</p> <p>Remove the obstruction.</p> <p>Turn off the spectrometer power and check the data cable connections.</p> <p>Change the detector or beamsplitter.</p>

Performing advanced diagnostic tests

You can use the Bench Diagnostics program to perform diagnostic tests on the main components of the spectrometer. You should run these tests if you have problems with your spectrometer to determine the cause. The diagnostics provide information about the status of the component as well as troubleshooting information, replacement procedures and information about ordering replacement parts.

Use the diagnostics software to:

- Run the spectrometer performance test
- Test specific components of your spectrometer
- Get information about replacement parts
- Check the spectrometer configuration
- Get troubleshooting tips

Follow these steps to run the diagnostics:

1. Make sure the main sample compartment is empty.

Remove any samples and sampling accessories (except a transmission sample holder).

2. Start the Bench Diagnostics software.

To do this, choose Advanced Diagnostics from the Collect menu. You can also close OMNIC, click the Start button in Windows, point to Programs (All Programs in Windows XP), point to the Thermo Nicolet folder and then choose Bench Diagnostics. This gives you access to advanced features of the software, including the performance test, that are not available if you run the diagnostics from OMNIC.

3. Follow the directions that appear on the screen to run the diagnostic tests.

When you are finished viewing information in a window, you can use the navigation buttons to return to earlier windows. Click this button to return to the previous window:



Click this button to return to the main Diagnostics window:



To exit the Bench Diagnostics software, click the Close button at the far right end of the title bar.



Troubleshooting Applications Problems



If you have turned on OMNIC's spectral quality checks feature, the software automatically checks the status of collected interferograms, and background and sample spectra. When OMNIC performs a check and detects a problem with data collection or spectra, the Collect Status indicator is displayed as a yellow circle or a red X. You can click the indicator (or click the View Collect Status button at the end of data collection) to see a summary of data collection problems encountered during the collection and other information about the collection.

This chapter lists some simple troubleshooting measures you can take to solve data collection problems with the spectrometer. If the action does not solve the problem, call your Thermo Electron service office.



In OMNIC Help Topics find "troubleshooting" in the Index and go to "Troubleshooting" for more information.

Problem	Possible Cause	Solution
A spectrum contains fringes or channeling.	The sample has parallel, highly reflective sides that cause the infrared beam to bounce within the sample when it is placed perpendicular to the beam.	Create a new film using a matte press. Try roughening the film surface slightly with silicon carbide paper or other suitable abrasive. Rotate the sample so that the infrared beam passes through sample at Brewster's angle. (Do not use this method if you are performing a quantitative analysis of sample.)

Problem	Possible Cause	Solution
A spectrum contains totally absorbing peaks.	The sample in a transmission experiment is too thick.	Use a thinner sample.
A spectrum contains carbon dioxide peaks that interfere with your data.	<p>The background spectrum is too old.</p> <p>The spectrometer is not adequately purged.</p> <p>The spectrometer is not purged.</p> <p>The spectrometer is purged but the air dryer does not remove carbon dioxide.</p>	<p>Collect a new background spectrum to use for ratioing your sample spectra.</p> <p>Make sure you are using the correct purge gas and that purge flow rate is adequate. Allow the system 3 to 5 minutes to reestablish purge before collecting the spectrum.</p> <p>Install an appropriate purge gas source and optional purge kit. Contact Thermo Electron for details.</p> <p>Replace the air dryer with one that removes carbon dioxide, or use nitrogen to purge the spectrometer. Contact Thermo Electron for more information.</p>
A spectrum contains water peaks that interfere with your data.	<p>The desiccant cannot absorb any more water vapor.</p> <p>The spectrometer is not adequately purged.</p> <p>The spectrometer is not purged.</p>	<p>Check the humidity indicator and replace the desiccant and indicator if needed.</p> <p>Make sure you are using the correct purge gas and that purge flow rate is adequate. Allow the system 3 to 5 minutes to reestablish purge before collecting the spectrum.</p> <p>Install an appropriate purge gas source and optional purge kit. Contact Thermo Electron for details.</p>

Problem	Possible Cause	Solution
<p>A spectrum contains no peaks.</p>	<p>No sample is in the infrared beam path.</p> <p>The sampling cup in a diffuse reflection experiment is not in place or is tilted.</p> <p>An infrared microscope is in its viewing mode.</p> <p>A sample film in an ATR experiment is being held against the ATR crystal with uneven pressure or has poor contact with the crystal.</p> <p>The resolution is set too low.</p>	<p>Check the sample compartment or accessory to make sure the sample is properly positioned in the beam path.</p> <p>Make sure the cup is properly positioned in the diffuse reflection accessory. For more information, view the appropriate tutorial available through Sampling Techniques in the Help menu.</p> <p>Put the microscope in infrared mode and collect the spectrum again.</p> <p>Make sure the sample is held evenly and has good contact with the crystal.</p> <p>Set Resolution on the Collect tab of the Experiment Setup dialog box to a value that lets you see small peaks. (Use a lower numerical setting to achieve higher resolution.)</p>
<p>A spectrum contains derivative-shaped peaks.</p>	<p>A sample in a diffuse reflection experiment also has a specular reflection component.</p> <p>The infrared beam was reflected from (instead of penetrating) a flat, shiny sample measured using a specular reflection accessory.</p>	<p>Correct the spectrum by using Other Corrections in the Process menu. (Select Kramers-Kronig.)</p> <p>Try using a less reflective sample.</p>

Problem	Possible Cause	Solution
<p>The baseline of the spectrum is not flat.</p>	<p>The KBr pellet was made with coarsely ground KBr powder, or the KBr pellet was improperly pressed.</p> <p>The background spectrum for a cast film was collected with an empty sample holder in the infrared beam.</p> <p>The spectrometer is not properly aligned, causing a sloped baseline.</p> <p>The spectrometer has not been on long enough to reach thermal equilibrium.</p> <p>The spectrometer is not properly purged.</p>	<p>Be sure to press the pellet properly.</p> <p>Remove the sample holder and collect the background again.</p> <p>Use the Align button on the Diagnostic tab of the Experiment Setup dialog box to align the spectrometer.</p> <p>For best results allow the spectrometer at least one hour to stabilize after turning it on.</p> <p>Check the system to make sure the correct purge gas is being used and that the flow rate is correct.</p>

Problem	Possible Cause	Solution
A spectrum is too noisy.	<p>There were too few scans.</p> <p>The resolution was too high.</p> <p>The purge gas flow rate or pressure is too high.</p> <p>The detector is saturated.</p> <p>The moving mirror velocity is set too high for the detector.</p> <p>The sample in an ATR experiment is not in good contact with the ATR crystal.</p>	<p>Increase the number of scans on the Collect tab of the Experiment Setup dialog box.</p> <p>Reduce the resolution (use a higher numerical setting) on the Collect tab of the Experiment Setup dialog box.</p> <p>Check the pressure regulator; it should be set between 0.7 and 1.4 bar (70 and 140 kPa, or 10 and 20 psig). Check the flowmeter; it should read 15 scfh (about 0.4 m³/hr). Adjust the flow rate if necessary.</p> <p>Add a bandwidth-limiting filter or an energy screen to reduce the signal strength.</p> <p>Set Velocity on the Bench tab of the Experiment Setup dialog box to a lower value.</p> <p>Reapply the sample to obtain more consistent contact between the sample and the ATR crystal.</p>

Index

- a**
- absolute transmission accessory 85
 - absorbance units 38
 - accessories 81
 - aligning 132
 - automated sample handling 85
 - available 12
 - cabling 91
 - descriptions 85
 - detector 92
 - installing 6, 12, 85
 - not aligned 142
 - not installed correctly 142, 143
 - power 92
 - system 90
 - when to turn on 18, 56
 - Advanced Diagnostics 127, 148
 - AEM 86
 - air dryer 90, 151
 - aligning
 - accessory 132
 - spectrometer 124, 130
 - annotation tool 120
 - aperture 141
 - effect on resolution 67
 - effect on wavenumber accuracy 67
 - for collecting data in visible spectral range 70
 - incorrect 141
 - resolution affected by 70
 - size for cooled detector 67
 - size for detector 67
 - ATR accessory 81, 82, 83, 84
 - ATR correction 103
 - ATR sample contact 154
 - Auxiliary 1 connector 93
 - Auxiliary 2 connector 93
 - Auxiliary connector 92
 - auxiliary experiment module 86
- b**
- Background button 53
 - background spectrum
 - collected with sample holder in beam 153
 - collecting 32, 53
 - defined 27
 - too old 151
 - when to collect 27
 - bandwidth-limiting filter 65
 - baseline
 - correcting 102, 116
 - not flat 153
 - not stable 139
 - sloped 153
 - baseplate
 - custom 86
 - removing 85
 - baseplates
 - Smart 28
 - Snap-In 28
 - beam path
 - blocked 141, 143, 147
 - beamsplitter
 - changing 10
 - compatibility with detector 60
 - fogged 143
 - not compatible with detector 142, 147
 - not properly seated 146
 - spectral range 62
 - types 60
 - which to use 11
 - beamsplitter compartment cover 147
 - Bench Diagnostics 127, 129, 148
 - Bench Status indicator 26
 - blanking totally absorbing bands 102

C	
cable not connected properly	138, 140, 144, 147
cabling accessory	91
carbon dioxide	
removing peaks due to	103
channeling in spectrum	150
cleaning purge filter	130
closing window	120
Collect Sample window	99
Collect Status indicator	37, 150
collecting	
background	53
background spectrum	32
sample spectrum	27, 30, 53
spectrum	12, 14, 23, 27, 30, 98
color of spectrum	111
commercial library	
finding compound in	105
common scale	112
components	
separating with subtraction	117
computer	
saving spectra on hard disk	107
when to turn on	19, 56
configuration	
default	30
opening	30
saving	119
connector	
Auxiliary 1	93
Auxiliary 2	93
detector	92
Detector/Motors	95
pass-through	91
connectors	
Auxiliary pinouts	94
for custom accessories	94
pass-through	94
sample compartment	92
contaminants	
identifying with subtraction	117
cooled detector	
aperture size for	67
cooling detector	19, 125
copying spectrum	121
correcting	
baseline	102, 116
spectrum	102
custom accessories	94
cuvette	87
d	
data collection	9, 14
default configuration	30
default experiment	30
deleting	
report notebook	109
spectrum	108
depth of penetration	103
desiccant	139, 151
changing	130
checking	17
when to change	126
desiccant indicator	17, 126
detector	
accessory	92
aperture size for	67
cable	144
changing	11
compatibility with beamsplitter	60
connector	92
cooling	19, 125
custom	144
energy screen	66, 69, 70, 123, 154
external	144
frosted	144
linearity	64
not compatible with beamsplitter	142, 147
not cooled	147
not installed properly	143
photometric accuracy	65
saturated	64, 65, 66, 67, 154
saturation	123
signal intensity	131
silicon	70
spectral range	62
types	60
using filter to reduce energy reaching	64

<i>detector, continued...</i>	
velocity too high for.....	154
which to use	11
detector interface kit.....	86
Detector/Motors connector.....	95
dewar	
leaking.....	144
diagnostics.....	129, 148
diffuse reflection accessory.....	81, 82
directory	
library.....	136
dispersion effects.....	103
Display Setup	111
distortion in spectrum.....	69
documentation.....	6
dual sources option.....	58
e	
electronics module	145
defective	146
replacing.....	134
e-mail.....	3, 7
energy screen.....	66, 69, 154
detectors typically used with.....	66
energy passed with.....	66
for collecting data in visible spectral range.....	70
optional wheel.....	86
resolution affected by.....	70
when to use	123
energy screen wheel	75
error message during data collection.....	147
Expand/Contract button	113
experiment	
default	30
not listed.....	136
restoring	136
selecting	21, 25, 30
Experiment drop-down list box.....	21, 25, 30, 97
Experiment Setup.....	21, 25
extended search feature	105
external detector	144
external source	59

f	
fax number.....	3, 7
fiber optic accessory	83, 88
filename for saving spectrum.....	37
filter	
bandwidth-limiting	65
for collecting data in visible spectral range	70
installing in sample holder.....	29
reducing energy reaching detector using	64
filter wheel.....	72, 86
finding peaks.....	120
flammable gases.....	15
flowmeter	15
Foundation Series	87
fringes in spectrum.....	150
frost on detector	144
FT-IR	6
full scale.....	112
g	
gain	99
for collecting data in visible spectral range	70
gas cells.....	87
GC interface.....	87
Getting Started tutorial.....	1
grazing angle accessory	84
h	
hardware requirements.....	4
Help.....	6, 7, 122
i	
Information button	121
infrared source	58
InSb detector	125

installing	
accessories.....	6, 12
accessory	85
beamsplitter	10
detector.....	11
hardware	7
OMNIC.....	5
optical filter	29
sample.....	11, 29, 34
sample holder	28
source	11
interferogram	
location	147
not present	141
saving	99
interferometer	
stand-by mode	145
IUPAC	64

k

KBr pellet improperly pressed.....	153
Kramers-Kronig correction	103, 152
Kubelka-Munk units.....	101

l

labeling peak.....	120
laser	
burned out.....	147
defective	146
detector misaligned.....	139
flickering	141, 145
indicator.....	18
not on.....	145
not working	138
replacing	134
Laser indicator	56

library

adding spectrum to.....	47, 105
commercial.....	105
comparing sample spectrum with spectra in	43
creating.....	7, 47, 104
directory	136
not listed.....	136
saving spectra in.....	107
scrapbook	104
searching	102
spectrum cannot be added to.....	135
library search	
extended search feature.....	105
search expert	106
specifying spectral regions for	103
library spectrum	
displaying.....	104
linearity	64
Liquid Analysis System	87
liquid nitrogen for cooling detectors	125
log (1/R) units	101

m

macro.....	53
Macro button	53
maintenance	13, 128, 130
matched scale	112
math	
subtracting.....	116
when to use subtraction.....	117
math operations	118
MCT detector	125
menu bar.....	25
menu names.....	25
microplate accessory	87
microscope	
descriptions	88
in viewing mode.....	152

mirror velocity.....	71
moving	
spectrum in pane	114
spectrum to another window	114
stacked spectrum	114
moving mirror	
velocity limitations.....	71

n

Nicolet Centaurus.....	88
Nicolet Continuum.....	88
noise	65, 69
number of scans	
signal-to-noise ratio affected by.....	69
too low	154

O

offset scale.....	112
OK/Enter button	53
OMNIC	
customizing	119
Help.....	7, 122
installing.....	5
learning	6, 7
preparing for data collection	97
starting.....	9, 20
wizards and tutorials	6
OMNIC window.....	24
Open Configuration.....	30
opening	
configuration	30
spectrometer cover	123
spectrum	106
optical layout.....	54
ordering parts	7

p

% reflectance units	101
% transmittance units	38
palette	40
parameters	
setting.....	21
part numbers.....	7

parts	
ordering.....	7
replacing	7
pass-through connectors	91, 94
pinouts	94
password	20
pasting spectrum	121
peak	
area.....	115
height	115
labeling	120
peaks	
carbon dioxide	151
derivative-shaped in spectrum	152
eliminating with subtraction	117
finding.....	120
noise.....	154
none in spectrum.....	152
totally absorbing in spectrum.....	151
water	151
performance test.....	132, 148
photoacoustic accessory.....	88
photoacoustic units	101
photometric accuracy	65, 66
pinouts	
Auxiliary connectors.....	94
Detector/Motors connector	96
polarizer	78, 88
power	
accessory.....	92
power cable defective	140
power cord	140
Power indicator.....	18, 56
power line conditioner	90
power supply.....	56
defective.....	140
not connected properly	140
replacing	134
power switch.....	18
pressure regulator.....	15
previewing report.....	109
previewing spectrum before printing	110
printer	
specifying.....	109
Printer Setup	109

printing report.....	50
purge.....	10
flow rate.....	15, 16
flow rate too high	139, 154
gas	15
inadequate.....	151, 153
when to use.....	15
purge filter	
cleaning	130
purge gas generator	90

q	
QC comparison	
setting up	43
QC library	43
quality of spectrum	37
quality standards.....	100
Quantify.....	135
quantitative analysis	64, 65, 66, 135

r	
rear panel	55
region	
selecting.....	120
regions	
specifying for library search.....	103
remote diagnostics	90
Remote Start accessory.....	88
replacing parts in spectrometer.....	127
report	
creating	48, 109
previewing.....	49, 109
printing	50
report notebook	
deleting	109
saving spectra in	107
report template	
creating	49
selecting.....	48, 109
requirements of system.....	4

resolution.....	135
affected by aperture.....	67, 70
affected by energy screen.....	70
and aperture.....	67
improving	70
incorrect	136, 152
too high	154
Roll/Zoom window	113, 114
RSVP.....	90

S	
SabIR.....	88
safety	14
sample	
installing.....	11, 29, 34
not present.....	152
too thick	151
Sample button	53
sample compartment	
connectors	92
windows fogged.....	143
sample film	
in ATR experiment	152
sample holder	
installing.....	28
installing sample or filter in	29
sample shuttle.....	89
sample spectrum	
adding to spectral library.....	105
adding to spectral window	36
collecting.....	27, 30, 53
sample wheel.....	85
sampling accessories	85
sampling cup missing or tilted	152
sampling techniques	6
saturation	154
detector.....	64, 65, 66, 67

saving	
configuration	119
interferograms	99
spectra	107
spectra as group.....	108
spectra automatically.....	106
spectrum.....	37
Scan indicator.....	18, 56, 145
flashing intermittantly	143
scans	
number of.....	35
scattering	69
scrapbook library.....	104
sealed and desiccated	33, 34
sealed and desiccated system	17, 126
search	
specifying spectral regions for	103
search expert.....	106
searching	
preparing spectrum for.....	102
spectral library.....	102
selecting	
experiment.....	21, 30
report template	109
spectral regions	120
spectrum.....	110
service	13, 128, 134
signal intensity	131
low.....	141, 142, 143
signal-to-noise ratio.....	66, 69
increased by bandwidth-limiting filter	65
silicon detector	70
Smart Accessories	6, 81
Smart Accessory.....	97
Smart baseplate	28, 86
Smart Purge.....	10, 16, 33, 34
Smart Purge Kit.....	91
Snap-In sample compartment baseplates	28
software	
learning	9
not started.....	145
preparing for data collection	9
requirements.....	4
starting.....	9
troubleshooting	135
source.....	58
burned out.....	144
external	59
glowing unevenly	143
installing	11
not working.....	147
replacing	134
which to use	126
Source indicator	18, 56, 144
spectra	
saving as group	108
saving automatically	106
saving on hard disk.....	107
subtracting	116
where to save	107
spectral library	
adding spectrum to.....	47, 105
creating	7, 104
searching.....	102
spectral quality checks	100
spectral regions	
and velocity.....	71
detector-beamsplitter	62
for library search.....	103
selecting	120
visible.....	70
spectral window	24
spectrometer	
aligning	130
components.....	10, 51
cover	139
data collect buttons	52
diagnostics	127
how it works	10
letting stabilize.....	19
maintaining	13, 128, 130
not aligned	138, 139, 141, 143, 145, 153
not plugged in	140
not purged.....	151, 153
optical layout	54
overheated.....	138, 142, 146
performance test.....	132
purging.....	15, 16
rear panel	55
replacing parts in.....	127

<i>spectrometer, continued...</i>	
servicing	13, 128, 134
sleep and stand-by modes.....	57
status.....	26
temperature.....	153
theory.....	6
tour	6
troubleshooting.....	137
turned off.....	145
turning on	18, 56
when to align	124
when to open cover of.....	123
when to turn off.....	127
spectrum	
adding to user library.....	47
background.....	27
baseline not flat	153
cannot be added to library	135
carbon dioxide peaks in.....	151
collecting	12, 23, 27, 30, 53, 98
color.....	111
comparing with QC library spectra	43
copying and pasting.....	121
correcting.....	102
correcting baseline of	116
creating report containing.....	48
deleting	108
derivative-shaped peaks in	152
distorted.....	69
fringes or channeling in.....	150
math operations	118
moving in pane.....	114
moving stacked.....	114
moving to another window.....	114
no peaks in.....	152
noise in	154
opening.....	106
preparing for search.....	102
preparing to collect.....	14
previewing before printing	110
quality.....	37
saving	37

<i>spectrumj, continued...</i>	
selecting	110
title	31
totally absorbing peaks in	151
units.....	38, 98, 101
water peaks in	151
zooming in on area of	113
specular reflection	152
specular reflection accessory.....	84, 89
starting OMNIC	9, 20
status indicators not lit	140
subtracting spectra.....	116
system accessories.....	90
t	
technical support	7
telephone numbers	3, 7
temperature.....	138, 142, 146, 153
outside allowed range	139
TGA interface	89
TGA module	89
tool	
annotation.....	120
peak area	115
peak height.....	115
region	120
selection	114
spectral cursor	115
toolbar	26
tools.....	40
totally absorbing bands	
blanking	102
training	7
transmission accessory	83, 89
troubleshooting.....	
applications	150
software.....	135
spectrometer.....	137
turning off system	19, 57
turning on computer.....	19, 56
turning on spectrometer.....	18, 56
turning on system.....	9

tutorials.....	6
Getting Started	1
service and repair	7
spectrometer tour.....	6

U

uninterruptable power supply.....	91
units.....	98
used for spectrum.....	38, 101
user library	
adding spectrum to.....	47
creating.....	47
saving spectra in.....	107
user name	20

V

validation wheel	90
Val-Q.....	90
velocity	
and spectral range.....	71
moving mirror	71
too high	141
too high for detector.....	154
visible spectral range.....	70

W

water vapor	151
removing peaks due to.....	103
wavelength precision	64
wavenumber accuracy.....	67
web site	3, 7
Window options.....	111
Windows metafile	121
wizards.....	6
library creation.....	7

X

X value.....	115
--------------	-----

Y

Y value.....	115
Y-axis.....	112

Z

zoom	
Expand/Contract button.....	113
in on spectrum	113
Zoom button	49

