

# **NAD-2073 Series Communications Appliance**

## **User's Manual**

Revision: 1.04

### **Portwell Inc.**

3F, No. 92, Sec. 1, Nei-Hu Rd., Taipei 114, Taiwan, R.O.C.  
Headquarter: +886-2-2799-2020 FAX: +886-2-2799-1010  
<http://www.portwell.com.tw>  
E M A I L :  
I N F O @ M A I L . P O R T W E L L . C O M . T W



# Table of Contents

<b>Chapter 1</b>	<b>Introduction.....</b>	<b>2</b>
1.1	<i>About This Manual .....</i>	<i>2</i>
1.2	<i>Manual Organization .....</i>	<i>2</i>
1.3	<i>Technical Support Information .....</i>	<i>2</i>
<b>Chapter 2</b>	<b>Get Started .....</b>	<b>3</b>
2.1	<i>Included Hardware .....</i>	<i>3</i>
2.2	<i>Before You Begin .....</i>	<i>3</i>
2.3	<i>The Chassis .....</i>	<i>4</i>
2.4	<i>Open the Chassis.....</i>	<i>4</i>
2.5	<i>Install or Remove a SODIMM.....</i>	<i>4</i>
2.6	<i>Remove and Install Battery .....</i>	<i>6</i>
2.7	<i>Install Compact Flash.....</i>	<i>6</i>
2.8	<i>Install 2.5" Hard disk.....</i>	<i>7</i>
2.9	<i>Install 3.5" Hard disk.....</i>	<i>8</i>
2.10	<i>Install PCI Riser Card.....</i>	<i>10</i>
2.11	<i>Product Specifications.....</i>	<i>11</i>
2.12	<i>Hardware Configuration Setting .....</i>	<i>12</i>
2.13	<i>Use a Client Computer .....</i>	<i>18</i>
2.14	<i>BIOS Setup Information .....</i>	<i>19</i>
<b>Chapter 3</b>	<b>Operation Guide.....</b>	<b>27</b>
3.1	<i>Brief Guide of PPAP-2020.....</i>	<i>27</i>
3.2	<i>System Architecture .....</i>	<i>28</i>

# Chapter 1 Introduction

## 1.1 About This Manual

This manual describes all required information for setting up and using the NAD-2073. All mentioned below applies to the whole system, unless specially stated.

NAD-2073 provides the essential components for delivering optimal performance and functionality in the value communications appliance market segment. This manual should familiarize you with NAD-2073 operations and functions. NAD-2073 family has one, two or five on-board Ethernet ports to serve communication appliances, such as Firewall, which needs more Ethernet ports to connect external network (internet), demilitarized zone and internal network.

NAD-2073 features:

- ♦ Versatile networking and I/O capabilities: 1, 4 or 5 Ethernet ports
- ♦ One COM ports
- ♦ One miniPCI slot
- ♦ Onboard 256MB RAM, Up to 512 Mbytes or 1Gbytes of DDR2 memory

## 1.2 Manual Organization

The manual describes how to configure your NAD-2073 system to meet various operating requirements. It is divided into three chapters, with each chapter addressing a basic concept and operation of this whole system.

- Chapter 1: Introduction. This section briefly talks about how this document is organized. It includes some guidelines for users who do not want to read through everything, but still helps you find what you need.
- Chapter 2: Hardware Configuration Setting and Installation. This chapter shows how the hardware is put together, including detailed information. It shows the definitions and locations of Jumpers and Connectors that you can easily configure your system. Descriptions on how to properly mount the main memory are also included to help you get a safe installation. Reading this chapter will teach you how to set up NAD-2040.
- Chapter 3: Operation Information. This section gives you illustrations and more information on the system architecture and how its performance can be maximized.

Any updates to this manual, technical clarification and answers to frequently asked questions would be posted on the web site: <http://isc.portwell.com.tw>

## 1.3 Technical Support Information

Users may find helpful tips or related information on Portwell's web site: <http://www.portwell.com.tw>. A direct contact to Portwell's technical person is also available. For further support, users may also contact Portwell's headquarter in Taipei or your local distributors.

**Taipei Office Phone Number: +886-2-27992020**

## Chapter 2 Get Started

This section describes how the hardware installation and system settings should be done.

### 2.1 Included Hardware

The following hardware is included in your kit:

- ♦ PPAP-2020 Communication Appliance System Board
- ♦ One null serial port cable

### 2.2 Before You Begin

To prevent damage to any system board, it is important to handle it with care. The following measures are generally sufficient to protect your equipment from static electricity discharge:

When handling the board, use a grounded wrist strap designed for static discharge elimination and touch a grounded metal object before removing the board from the antistatic bag. Handle the board by its edges only; do not touch its components, peripheral chips, memory modules or gold contacts.

When handling memory modules, avoid touching their pins or golden edge fingers. Put the value communications appliance system board and peripherals back into the antistatic bag when they are not in use or not installed in the chassis.

Some circuitry on the system board can continue operating even though the power is switched off. Under no circumstances should the Lithium coin cell be used to power the real-time clock be allowed to be shorted. The coin cell can heat under these conditions and present a burn hazard.

#### **WARNING!**

1. "CAUTION: Danger of explosion if battery is incorrectly replaced. Replace only with the same or equivalent type recommended by the manufacturer. Discard used batteries according to the manufacturer's instructions"
2. This guide is for technically qualified personnel who have experience installing and configuring system boards. Disconnect the system board power supply from its power source before you connect/disconnect cables or install/remove any system board components. Failure to do this can result in personnel injury or equipment damage.
3. Avoid short-circuiting the lithium battery; this can cause it to superheat and cause burns if touched.
4. Do not operate the processor without a thermal solution. Damage to the processor can occur in seconds.
5. Do not block air vents. Minimum 1/2-inch for clearance required.

## 2.3 The Chassis

The system is integrated in a customized chassis (**Fig. 2-1, Fig. 2-2**). On the front panel you will find the Power LED, Hard Disk LED and LAN LED. The back panel has Five LAN ports and a COM port.



**Fig. 2-1** Front view of the Chassis



**Fig. 2-2** Back view of the Chassis

## 2.4 Open the Chassis

1. Take off the four screws (three at the rear side and two at the right/left side) and remove the top lead (**Fig. 2-3**).



**Fig. 2-3** Take off two screws

2. The top lead (**Fig. 2-4**) can be removed from the base stand (**Fig. 2-5**).



**Fig. 2-4** The top lead



**Fig. 2-5** The base stand

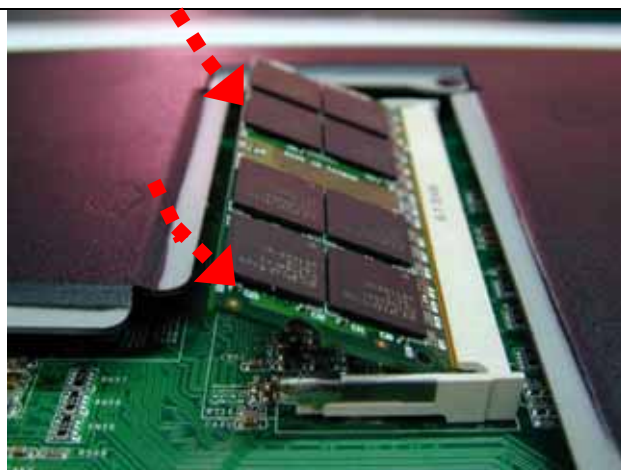
## 2.5 Install or Remove a SODIMM

Follow these steps to upgrade or remove RAM module:

1. Install the system memory by pulling the socket's arm and pressing it into the slot gently. (**Fig. 2-6, 2-7**)

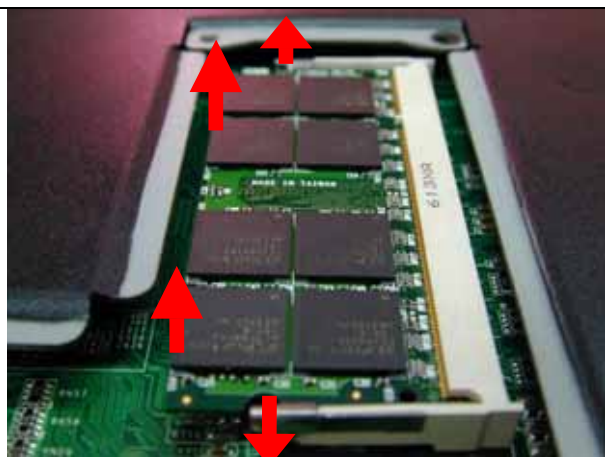


**Fig. 2-6** The memory slot



**Fig. 2-7** Install SODIMM

2. By pulling the arms, the SODIMM can eject itself (**Fig. 2-8**).



**Fig. 2-8** Eject a SODIMM module

## 2.6 Remove and Install Battery

1. Press the metal clip back to eject the button battery (**Fig. 2-9**).
2. Replace it with a new one by pressing the battery with fingertip to restore the battery (**Fig. 2-10**).



**Fig. 2-9** Eject the battery



**Fig. 2-10** Restore the battery

## 2.7 Install Compact Flash

The system has an internal drive bay for one Compact Flash card drive. If the CF is not pre-installed, you can install it by yourself. Follow the steps below to install the CF:

3. Fasten the five screws to lock bracket together (**Fig. 2-11a, 2-11b**).



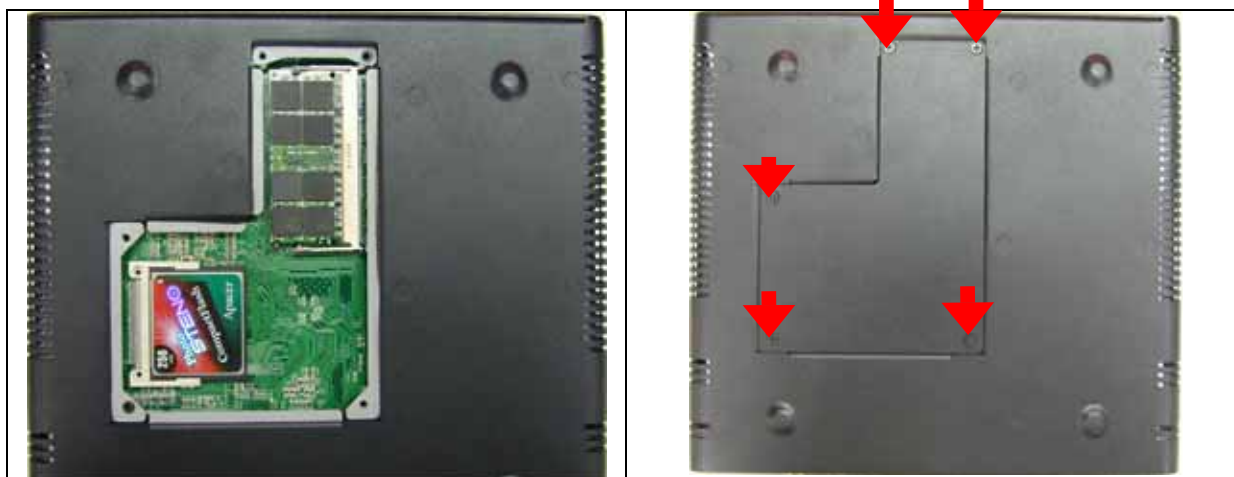
**Fig. 2-11a** Remove L type base under button case



**Fig. 2-11b** Push CF into the bracket

4. Completion CF to the System Chassis (**Fig. 2-12**)





**Fig. 2-12 completion CF in system**

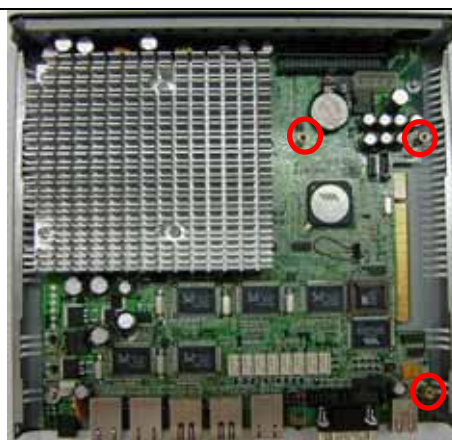
Fix all screws back (**Fig. 2-13**).

## 2.8 Install 2.5" Hard disk

The system has an internal drive bay for one 2.5" hard disk drive. If the HDD is not pre-installed, you can install by yourself. You need the parts from the accessory-bag as shown on **Figure 2-14**. They are one HDD-bracket, several screws and one 44pin IDE cable.



**(Fig. 2-14).**



**(Fig. 2-15).** Fix all Metal Spacers.





(**Fig. 2-16**). Fix the hard disk drive on the HDD bracket with four screws. Plug the IDE cable into hard disk drive connector



(**Fig. 2-18**). After close top chassis, fix one plat-screw.

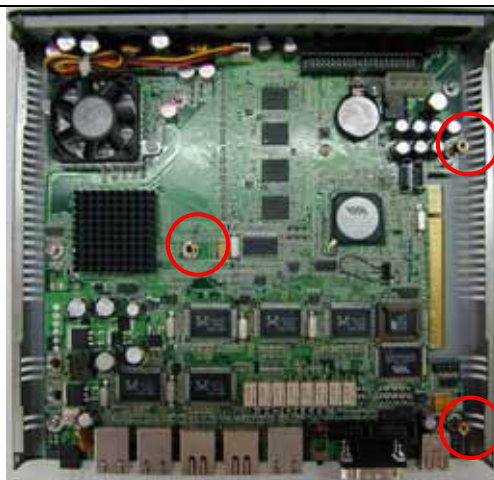
(**Fig. 2-17**). Connect IDE Cable and power cable to system

## 2.9 Install 3.5" Hard disk

The system has an internal drive bay for one 3.5" hard disk drive. If the HDD is not pre-installed, you can install by yourself. You need the parts from the accessory-bag as shown on **Figure 2-19**. They are one HDD-bracket, several screws. (from left to right).



(**Fig. 2-19**)



(**Fig. 2-20**) Fix the Metal Spacers (14mm)



(**Fig. 2-21**) Placement the HDD bracket



(**Fig. 2-22**). Fix HDD-bracket

5. Connect Power Cable and IDE Cable before assemble hard disk. After assemble hard disk, put IDE Cable and Power cable into board.



**(Fig. 2-23).** Fix the hard disk drive on the HDD bracket with four screws. Plug the IDE cable into hard disk drive connector



**(Fig. 2-24).** Completion HDD with bracket.

## 2.10 Install PCI Riser Card

1. Put Riser Card into Metal – bracket.
2. Put PCI Card Device into riser card assembly



**Fig. 2-28).** Assemble Completed.



**Fig. 2-29).** Fix the Plat-screw.

## 2.11 Product Specifications

<b>Model:</b>	<b>NAD-2073</b>
<b>Main Processor:</b>	<ul style="list-style-type: none"><li>• VIA C7 processors (FSB 400/533Mhz)</li></ul>
<b>BIOS:</b>	<ul style="list-style-type: none"><li>• Award system BIOS with 512KB flash ROM to support DMI, PnP, APM function</li></ul>
<b>Main Memory:</b>	<ul style="list-style-type: none"><li>• Up to 1024MB 1.8V DDR2</li></ul>
<b>L2 Cache Memory:</b>	<ul style="list-style-type: none"><li>• 128KB 32-way built in (C7) CPU module</li></ul>
<b>Chipset:</b>	<ul style="list-style-type: none"><li>• VIA 8237R+</li></ul>
<b>SATA Interface</b>	<ul style="list-style-type: none"><li>• Two SATA I DMA133 Storage</li></ul>
<b>PCI IDE Interface:</b>	<ul style="list-style-type: none"><li>• One 40 Pin for DMA/33/66/100 IDE Storage</li></ul>
<b>Serial Ports:</b>	<ul style="list-style-type: none"><li>• Support two high-speed 16550 compatible UARTs with 16-byte T/R FIFOs</li></ul>
<b>USB Interface:</b>	<ul style="list-style-type: none"><li>• Support two USB2.0 ports for high speed I/O peripheral devices</li></ul>
<b>Auxiliary I/O Interfaces:</b>	<ul style="list-style-type: none"><li>• System reset switch, power okay LED, Ethernet activity LED, Ethernet speed LED, general purpose LED, alert LED and HDD LED interface</li></ul>
<b>Power Input:</b>	<ul style="list-style-type: none"><li>• Support one AC Adaptor with Adaptor input (power requirement: Input: 100-240V, Output: 15V == 4A)</li></ul>
<b>On-board Ethernet:</b>	<ul style="list-style-type: none"><li>• Five RealTek 8100C+ 10BASE-T/100BASE-TX Fast Ethernet controller with RJ-45 interface</li><li>• Five RealTek 8110SC 32-bit Gb Ethernet controller with RJ-45 interface</li></ul>
<b>Hardware Monitor:</b>	Support on-board hardware monitor for <ul style="list-style-type: none"><li>• CPU fan, System fan</li><li>• System voltages</li></ul>
<b>Environmental Requirements:</b>	<ul style="list-style-type: none"><li>• Operating Temperature: 5°C ~ 40°C</li><li>• Storage Temperature: 0°C ~ 70°C</li><li>• Relative Humidity: 5% ~ 95%, non-condensing</li></ul>
<b>Dimension:</b>	<ul style="list-style-type: none"><li>• 214mm(L) x 225mm (W) x 52mm (H)</li></ul>

## 2.12 Hardware Configuration Setting

This section gives the definitions and shows the positions of jumpers, headers and connectors. All of the configuration jumpers on PPAP-2020 are in the proper position. The default settings set by factory are marked with a star ( ★ ).

### **Jumpers**

In general, jumpers on PPAP-2020 system board are used to select options for certain features. Some of the jumpers are configurable for system enhancement. The others are for testing purpose only and should not be altered. To select any option, cover the jumper cap over (Short) or remove (NC) it from the jumper pins according to the following instructions. Here NC stands for “Not Connected”.







## JP1 & J17 pin Header

+	-
6	5
4	3
2	1

JP1	Function
1-3 , 2-4 Short	Power on default at Normal mode , mode selection is S/W programmable★
3-5 , 2-4 Short	Power on default at Bypass mode , mode selection is S/W programmable
4-6 Short	Always at normal mode.



1-3,2-4 short



3-5,2-4 short



4-6 short

## JP2: CMOS Clear

JP2	Function
1-2 Short	Normal Operation ★
2-3 Short	Clear CMOS Contents

## J10: Reset to default function

J10	Function
1-2 Short	RESET TO DEFAULT
1-2 Open	Normal mode ★

Connector	Function	Remark
J1~J5	LAN LED	
J7	CPU FAN connector	
J8	IDE connector	
J9	+5V & +12V power connector(only output)	
J10	RESET TO DEFAULT	
J13	SYS FAN connector	
J14	8-bit GPO LED connector	
J15	HDD LED +Power LED	

<b>J17</b>	By-pass LED	
<b>J18</b>	VGA connector	
<b>J19</b>	COM2 connector	
<b>J21~J24</b>	RJ45 connector	
<b>J26、J27</b>	USB connector	
<b>J30</b>	COM1 connector	
<b>J31</b>	PICMG 1.0 connector	

#### Pin Assignments of Connectors

##### **SW1: System reset**

PIN No.	Signal Description
<b>1</b>	RST_SW
<b>2</b>	Ground

##### **J7/J13: Fan power connector**

PIN No.	Signal Description
<b>1</b>	GND
<b>2</b>	+12V
<b>3</b>	RPM signal

##### **J14: 8-bit GPIO connector define**

Pin	Signal Name	Pin	Signal Name
<b>1</b>	GPIO	<b>2</b>	GPIO
<b>3</b>	GPIO	<b>4</b>	GPIO
<b>5</b>	GPIO	<b>6</b>	GPIO
<b>7</b>	GPIO	<b>8</b>	GPIO
<b>9</b>	Ground	<b>10</b>	+5V

##### **J15: HDD LED +Power LED connector define**

Pin	Signal Name	Pin	Signal Name
<b>1</b>	+5V	<b>2</b>	-HD
<b>3</b>	+5V	<b>4</b>	-PWR

##### **J18: VGA connector define**

Pin	Signal Name	Pin	Signal Name
<b>1</b>	RED	<b>2</b>	DDCCLK
<b>3</b>	GREEN	<b>4</b>	Ground
<b>5</b>	BLUE	<b>6</b>	DDCDATA
<b>7</b>	HSYNC	<b>8</b>	Ground
<b>9</b>	VSNC	<b>10</b>	N/C

**J21/J22/J23/J24/J25: Ethernet5 RJ-45 interface connector**

PIN No.	Signal Description
1	NC
2	LAN_MD0+
3	LAN_MD0-
4	TC1
5	NC
6	NC
7	TC2
8	LAN_MD1+
9	LAN_MD1-
10	NC
11	ACTIVE#
12	LINK#
13	LINK100#
14	+3.3V
15	Ground
16	Ground

**J19: Serial port 2x5 shrouded connector (COM2)**

PIN No.	Signal Description
1	DCD, Data carrier detect
2	DSR, Data set ready
3	RXD, Receive data
4	RTS, Request to send
5	TXD, Transmit data
6	CTS, Clear to send
7	DTR, Data terminal ready
8	RI, Ring indicator
9	GND, Ground
10	NC, Not connected

**J8: IDE1 2x20 shrouded connector**

PIN No.	Signal Description	PIN No.	Signal Description
1	Reset IDE	21	DRQ0
2	Ground	22	Ground
3	Host data 7	23	Host IOW
4	Host data 8	24	Ground
5	Host data 6	25	Host IOR
6	Host data 9	26	Ground
7	Host data 5	27	IOCHRDY0 {IOCHRDY1}
8	Host data 10	28	Not connected
9	Host data 4	29	DACK0 {DACK1}
10	Host data 11	30	Ground
11	Host data 3	31	IRQ14
12	Host data 12	32	Not connected
13	Host data 2	33	Address 1
14	Host data 13	34	Not connected
15	Host data 1	35	Address 0
16	Host data 14	36	Address 2
17	Host data 0	37	Chip select 0
18	Host data 15	38	Chip select 1
19	Ground	39	Activity
20	Not connected	40	Ground

**J30: Serial port D-SUB9 connector (COM1)**

PIN No.	Signal Description
1	Data Carrier Detect (DCD)
2	Receive Data (RXD)
3	Transmit Data (TXD)
4	Data Terminal Ready (DTR)
5	Ground (GND)
6	Data Set Ready (DSR)
7	Request to Send (RTS)
8	Clear to Send (CTS)
9	Ring Indicator (RI)

**J26/J27: Dual USB port connector**

PIN No.	Signal Description	PIN No.	Signal Description
1	+5V	2	N/C
3	USBD0-	4	Ground
5	USBD0+	6	USBD1+
7	Ground	8	USBD1-
9	N/C	10	+5V

**J33:power off bypass function**

JP33	Function
1-5 , 2-6, 3-7 , 4-8 Short	Enable power off bypass function★
1-5 , 2-6, 3-7 , 4-8 Open	Disable power off bypass function★

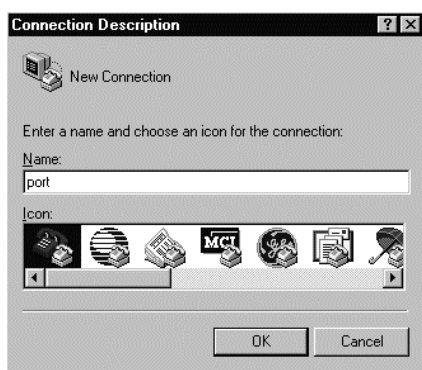


### **Connection Using Hyper Terminal**

If users use a headless NAD-2073, which has no mouse/keyboard and VGA output connected to it, the console may be used to communicate with NAD-2073.

To access NAD-2073 via the console, Hyper Terminal is one of the choices. Follow the steps below for the setup:

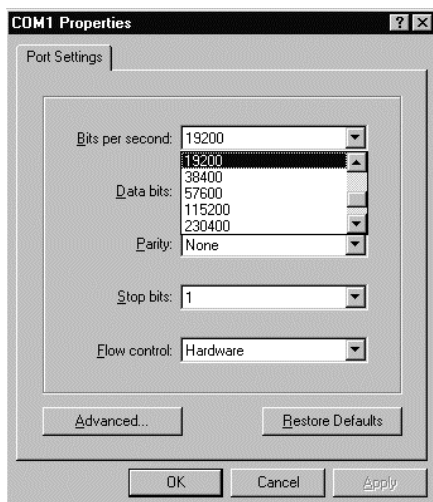
1. Execute HyperTerminal under C:\Program Files\Accessories\HyperTerminal
2. Enter a name to create new dial



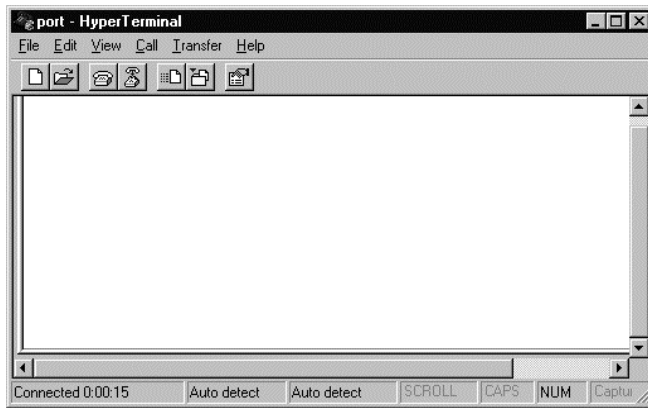
3. For the connection settings, make it Direct to COM1.



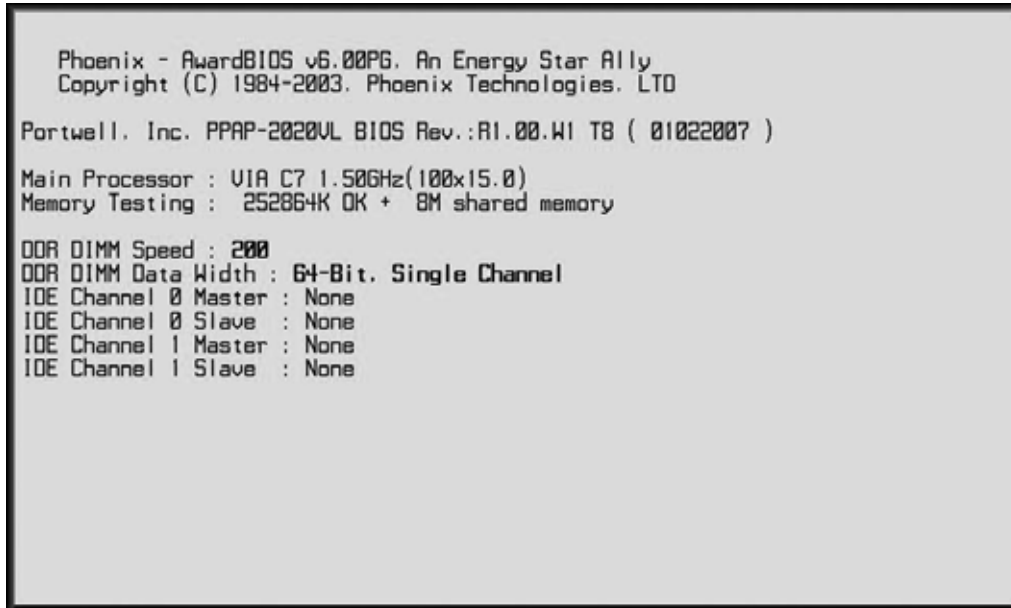
4. Please make the port settings to Baud rate 19200, Parity None, Data bits 8, Stop bits 1



5. Turn on the power of NAD-2073, after following screen was shown



6. You can then see the boot up information of NAD-2073



When message “Hit <DEL> if you want to run Setup” appear during POST, after turning on or rebooting the computer, press **<Tab>** key **immediately** to enter BIOS setup program.

7. This is the end of this section. If the terminal did not port correctly, please check the previous steps.

## 2.14 BIOS Setup Information

NAD-2073 is equipped with the Award BIOS within Flash ROM. The BIOS has a built-in setup program that allows users to modify the basic system configuration easily. This type of information is stored in CMOS RAM so that it still retains during power-off periods. When system is turned on, NAD-2073 communicates with peripheral devices and checks its hardware resources against the configuration information stored in the CMOS memory. Whenever an error is detected, or the CMOS parameters need to be initially defined, the diagnostic program will prompt the user to enter the Setup program. Some errors are significant enough to abort the start-up.





## **Entering Setup**

When you see the message “Hit <DEL> if you want to run Setup”, after turning on or rebooting the computer, press <Del> key ***immediately*** to enter BIOS setup program.

If you want to enter Setup but fail to respond before the message disappears, please restart the system either by first turning it off and followed by turning it on (COLD START) or simply press the "RESET" button. “WARM START” (press <Ctrl>, <Alt>, and <Delete> keys simultaneously) will do, too. Unless you press the keys at the right time, the system will not boot, an error message will display and you will be asked to do it again.

When no setting is stored in BIOS or the setting is missing, a message “Press <F1> to run Setup” will appear. Then press <F1> to run Setup or resume HIFLEX BIOS Setup. You can use the keyboard to choose among options or modify the system parameters to match the options with your system. The table shown on next page will show you all of keystroke functions in BIOS Setup.

### ***Keys to navigate within Setup menu***

Key	Function
Up ( ↑ )	Move to the previous item
Down ( ↓ )	Move to the next item
Left ( → )	Move to the item on the left (menu bar)
Right ( ← )	Move to the item on the right (menu bar)
Enter	Enter the item you desired
PgUp	Increase the numeric value or make changes
PgDn	Decrease the numeric value or make changes
+	Increase the numeric value or make changes
—	Decrease the numeric value or make changes
Esc	<b>Main Menu:</b> Quit and not save changes into CMOS <b>Status Page Setup Menu and Option Page Setup Menu:</b> Exit current page and return to Main Menu
F1	General help on SETUP navigation keys
F5	Load previous values from CMOS
F6	Load the fail-safe defaults from BIOS default table
F7	Load the optimized defaults
F10	Save all the CMOS changes and exit



## **Main Menu**

Once you enter NAD-2073 Award BIOS CMOS Setup utility, you should start with the Main Menu. The Main Menu allows you to select from eleven setup functions and two exit choices. Use arrow keys to switch among items and press <Enter> to accept or bring up the sub-menu.

## Phoenix – Award BIOS CMOS Setup Utility

```

Phoenix - AwardBIOS CMOS Setup Utility
=====
* Standard CMOS Features
* Advanced BIOS Features
* Advanced Chipset Features
* Integrated Peripherals
* PnP/PCI Configurations
* PC Health Status
* Frequency/Voltage Control

Load Fail-Safe Defaults
Load Optimized Defaults
Set Supervisor Password
Set User Password
Save & Exit Setup
Exit Without Saving

Esc : Quit
F10 : Save & Exit Setup

^ U > < : Select Item

Time, Date, Hard Disk Type...
=====
  
```

*NOTE: It is strongly recommended to reload the optimized default setting if CMOS is lost or BIOS is updated.*



## **Standard CMOS Setup Menu**

This setup page includes all the items within standard compatible BIOS. Use the arrow keys to highlight the item and then use the <PgUp>/<PgDn> or <+>/<-> keys to select the value or number you want in each item and press <Enter> to certify it.

Follow command keys in CMOS Setup table to change Date, Time, Drive type and Boot Sector Virus Protection Status.

### **Screen Shot: Phoenix – Award BIOS CMOS Setup Utility**

Phoenix - AwardBIOS CMOS Setup Utility		
Standard CMOS Features		
Date (mm:dd:yy)	Time (hh:mm:ss)	Item Help
Wed, Dec 20 2006	10 : 8 : 7	Menu Level *
* IDE Channel 0 Master	[ None ]	Change the day, month, year and century
* IDE Channel 0 Slave	[ None ]	
* IDE Channel 1 Master	[ None ]	
* IDE Channel 1 Slave	[ None ]	
Video	[ EGA/VGA ]	
Base Memory	640K	
Extended Memory	1038336K	
Total Memory	1039360K	
F5: Previous Values    F6: Fail-Safe Defaults    F7: Optimized Defaults		

### Menu Selections

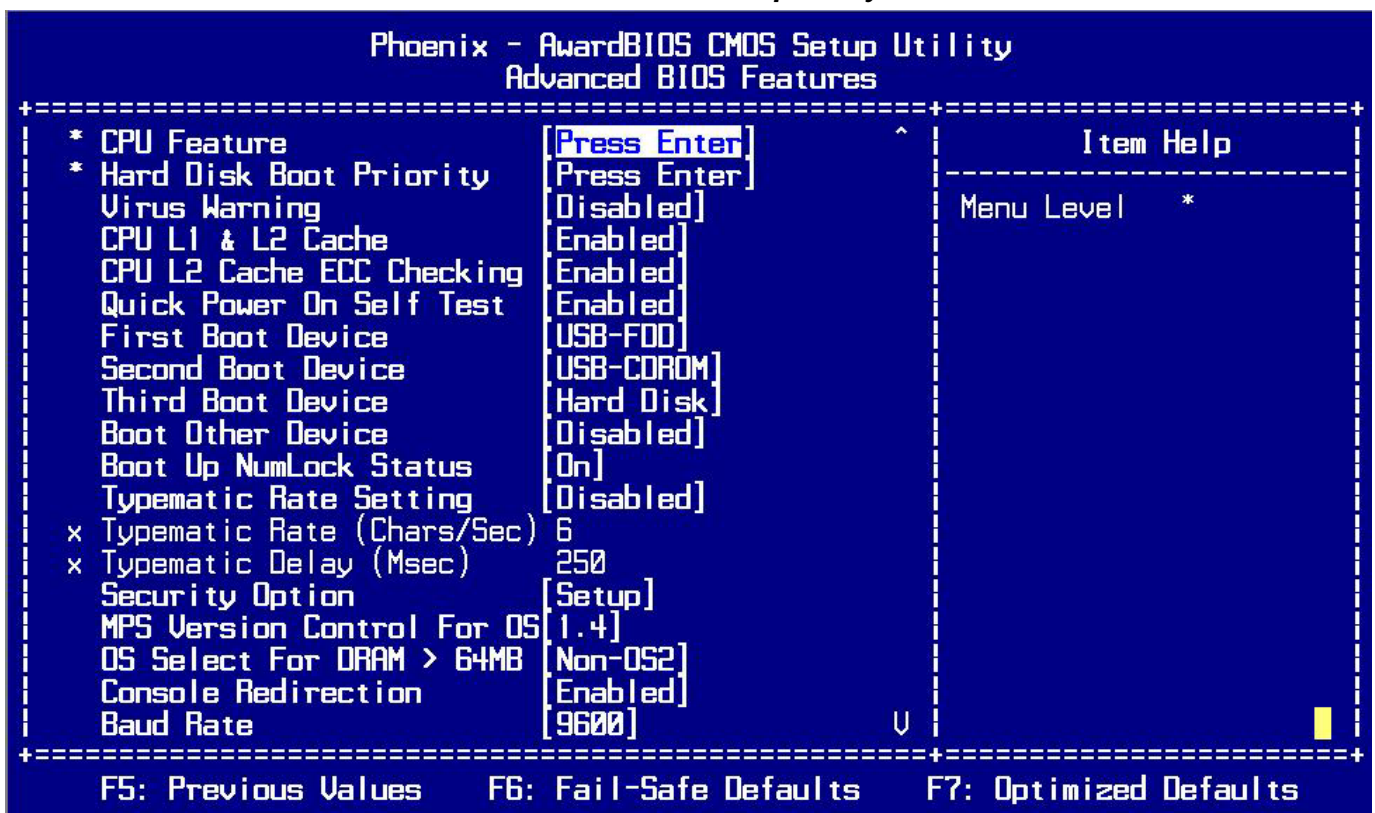
Item	Options	Description
Date	mm:dd:yy	Set the system date. Note that the 'Day' automatically changes when you set the date
Time	hh:mm:ss	Set the system time
Video	EGA/VGA CGA 40 CGA 80 MONO	Select the default video device
Base Memory	N/A	Display the amount of conventional memory detected during boot up
Extended Memory	N/A	Display the amount of extended memory detected during boot-up
Total Memory	N/A	Display the total memory available in the system



### Advance BIOS Features

This section allows user to configure your system for basic operation. Users will be able to select the system's default speed, boot-up sequence, keyboard operation, shadowing and security.

#### Screen Shot: Phoenix – Award BIOS CMOS Setup Utility



### Internal Cache/External Cache

These two categories speed up memory access. However, it depends on CPU/chipset

design.

<b>Enabled</b>	Enable cache
<b>Disabled</b>	Disable cache



### **Quick Power On Self Test**

This category speeds up Power On Self Test (POST) after you power up the computer. If it is set to Enable, BIOS will shorten or skip some check items during POST.

<b>Enabled</b>	Enable quick POST
<b>Disabled</b>	Normal POST



### **Boot Up NumLock Status**

Select power on state for NumLock.

The choice: Enabled/Disabled.



### **Gate A20 Option**

This entry allows user to select how the gate A20 is handled. The gate A20 is a device used to address memory over 1 Mbytes. Originally, the gate A20 was handled via a pin on the keyboard. But now, though keyboards still provide this support, it is more common, and much faster, for the system chipset to provide support for gate A20.

<b>Normal</b>	Keyboard
<b>Fast</b>	Chipset



### **Typematic Rate Setting**

Keystrokes repeat at a rate determined by the keyboard controller. When enabled, the typematic rate and typematic delay can be selected.

The choice: Enabled/Disabled.



### **Typematic Rate (Chars/Sec)**

Set the how many number of times a second to repeat a keystroke when a key is holding down.

The choice: 6, 8, 10, 12, 15, 20, 24 and 30.



### **Typematic Delay (Msec)**

Set the delay time after the key is held down before it begins to repeat the keystroke.

The choice: 250, 500, 750 and 1000.



### **Security Option**

Select whether the password is required every time the system boots or only when you enter setup.

<b>System</b>	The system will not boot and access to Setup will be denied if the correct password is not entered at the prompt.
<b>Setup</b>	The system will boot and access to Setup will be denied if the correct password is not entered at the prompt.

*Note: To disable security, select PASSWORD SETTING at Main Menu and then user will be asked to enter password. Do not type anything and simply press <Enter>, it will disable security. Once the security is disabled, the system will boot up and user can enter Setup freely.*



### **OS Select for DRAM > 64MB**

Select the operating system that is running with more than 64MB of RAM on the system.

The choice: Non-OS2, OS2.



### **Console Redirection**

Set the UNIX Console redirect to the terminal from COM1.

The choice: Enabled/Disabled.



### **Baud Rate**

Set the RS-232 baud rate speed.

The choice: 9600, 19200, 38400, 57600 and 115200.

## **Advanced Chipset Features**

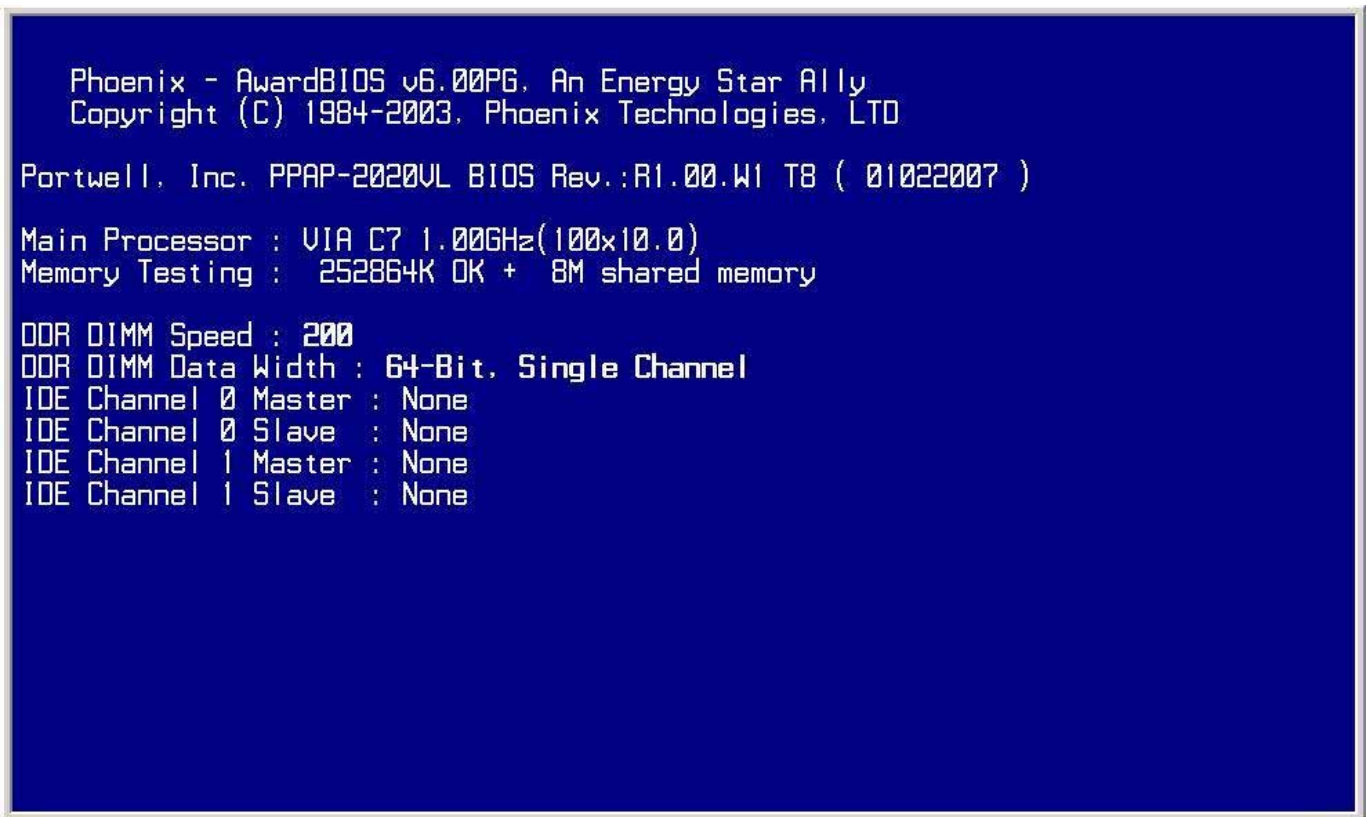
This section allows user to configure your system for AT clock, DRAM timings...



## **Integrated Peripherals**



### **Onboard LAN BootROM**



User can press “L” for boot from LAN.

## Chapter 3 Operation Guide

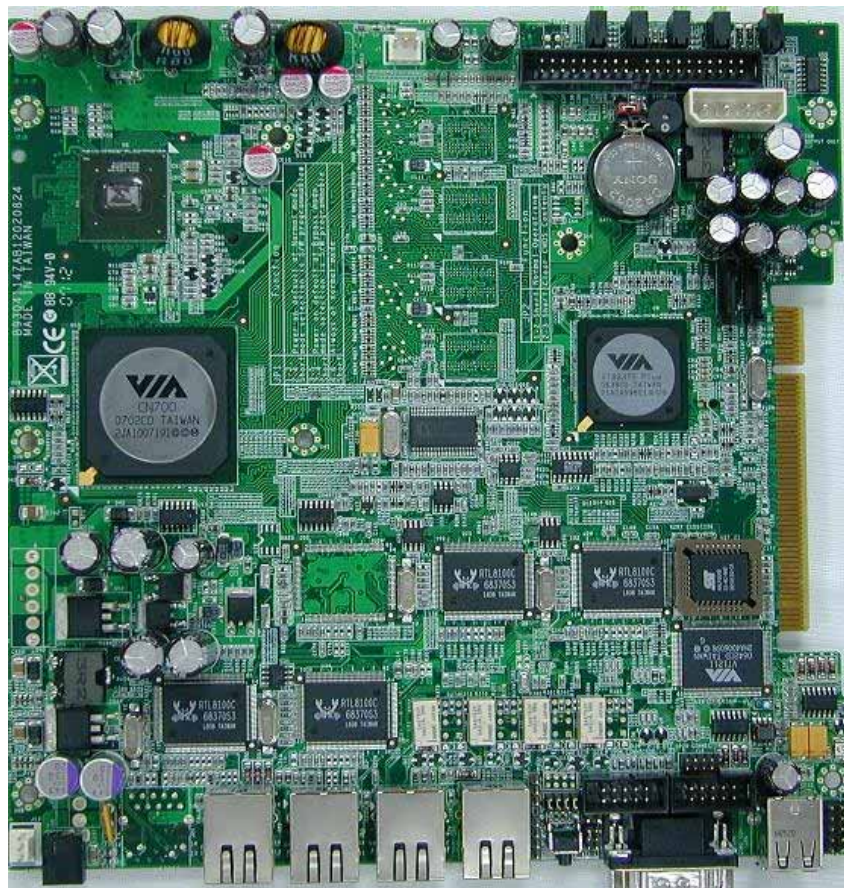
### 3.1 Brief Guide of PPAP-2020

PPAP-2020 is a Communication Appliance computing board based on VIA VT8237R+ chipset technology. PPAP-2020 has four/five on-board LAN ports to serve communication appliances, such as Firewall, which needs four Ethernet ports to connect external network (internet), demilitarized zone and internal network. Different I/O management policies can be applied respectively to individual network to achieve the highest security level. The target market segment is communication appliance including Virtual Private Network, Load Balancing, Quality of Service, Intrusion Detection, Virus Detection, Firewall and Voice Over IP.

This PPAP-2020 system board is eligible with VIA Eden processor EPGA package (Eden Esp8000) and On-board 256Mb or higher DDRAM. The enhanced on-board PCI IDE interface supports 1 drive up to PIO mode 4 timing and Ultra DMA/100 synchronous mode feature. The on-board super I/O chipset integrates two serial ports driven by two high performance 16550C-compatible UARTs to provide 16-byte send/receive FIFOs. Besides, the two Universal Serial Bus ports provide high-speed data communication between peripherals and PC.

The on-board flash ROM is used to make the BIOS update easier. The high precision Real Time Clock/Calendar is built to support Y2K for accurate scheduling and storing configuration information. All of these features make PPAP-2020 excellent in stand-alone applications.

If any of these items is damaged or missing, please contact your vendor and save all packing materials for future replacement and maintenance.



**Figure 3-1 PPAP-2020 Board**

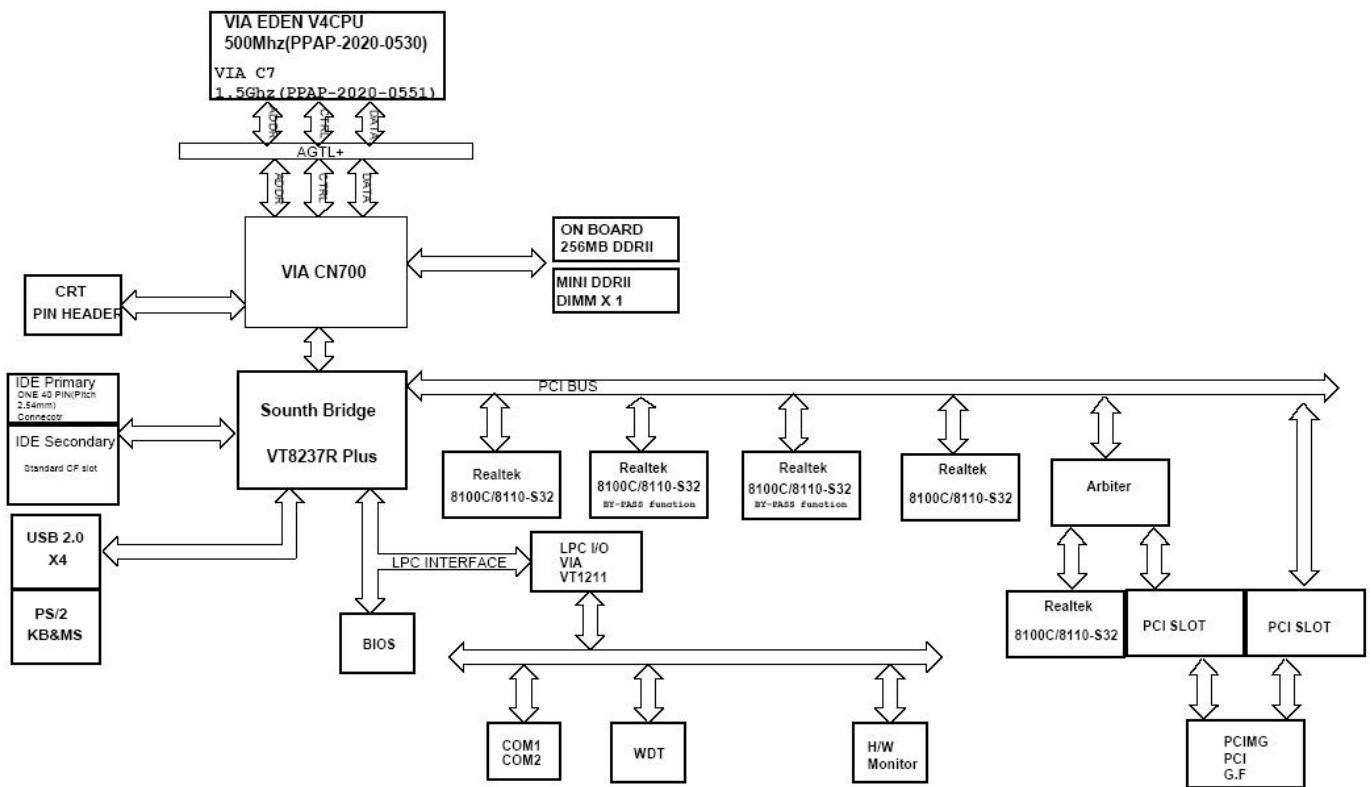
The following illustration of block diagram will show you how PPAP-2020 gives you a highly integrated system solution. The most up-to-date system architecture of PPAP-2020 includes two main chips. It contains VIA CN700 and VIA VT823R+ to support VIA C7 processor, DDR2 SODIMM, USB 2.0 port, communication, Ultra DMA/100 IDE Master and SATA storage. The on-board super VIA VT8237R+ supports two UARTs and hardware monitoring.

PPAP-2020 has built-in onboard VIA C7 processor EPGA package (Eden C7) 533 or 400MHz system bus) for cost-effective and high performance application.

The VIA CN700 provides a completely integrated solution for the system controller and data path components in a VIA processor system. It provides optimized 64-bit DDR2 interface.

The VIA VT8237R+ provides a highly integrated multifunction for the best industry applications. It supports up to for Ultra ATA/33/66/100 IDE master interface, Universal Serial Bus (**USB2.0**) controllers, Full duplex high performance 150MB/s Dual Channel SATA interface.

All detailed operating relations are shown in **Fig. 3-2** (PPAP-2020 System Block Diagram).



**Figure 3-2 PPAP-2020 Block Diagram**