



Quick Installation Guide
Rev 2.0

Table Of Contents

Paragraph	Page
1 INTRODUCTION	4
2 EQUIPMENT OVERVIEW	4
3 COMPLIANCE.....	5
4 EQUIPMENT PACKING LIST	5
5 SYSTEM REQUIREMENTS	5
6 INSTALLATION	6
6.1 Router Connections	6
6.1.1 Cable connections on the back panel.....	6
6.1.2 Connection of a line splitter	6
6.1.3 Connection to power.....	7
6.2 Router Initial Configuration.....	7
6.2.1 Access through the web browser.....	7
6.2.2 Timezone setting	9
6.2.3 Interface settings	10
6.2.4 WAN settings.....	10
6.2.5 WiFi settings.....	11
6.2.6 Changing the Administrator password.....	12
6.3 Troubleshooting	13

List of Tables

Table	Page
Table 1: Compliance	5

List of Figures

Figure	Page
Figure 1: Front view	4
Figure 2: Rear view	4
Figure 3: Side view	4
Figure 4: Router connections	6
Figure 5: Line splitter.....	6
Figure 6: Power supply	7
Figure 7: Power and LINK LEDs working	7

1 INTRODUCTION

CSE's AMRG is an integrated solution for ADSL2/2+ home gateway with five Ethernet ports USB 2.0 and WiFi module

2 EQUIPMENT OVERVIEW

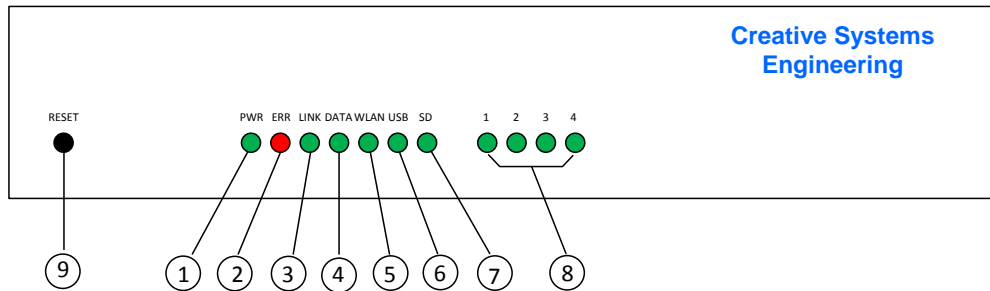


Figure 1: Front view

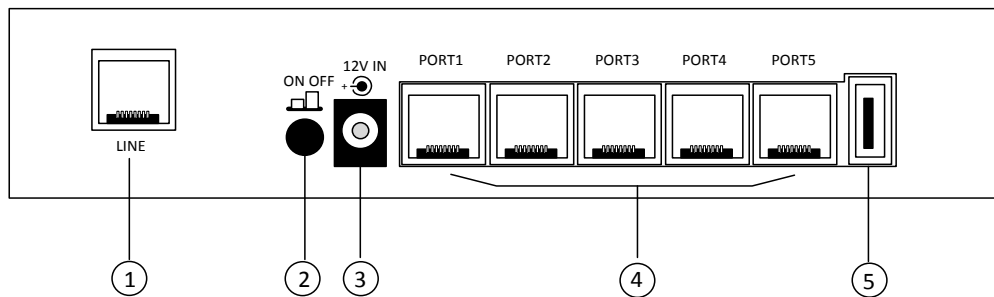


Figure 2: Rear view

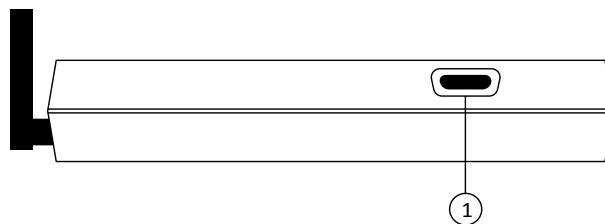


Figure 3: Side view

Front view:

1. Power LED
2. Error LED
3. ADSL Link LED
4. LAN Data LED
5. Wireless LAN LED
6. USB LED
7. SD card LED (optional)

8. User defined LEDs
9. Reset button

Rear view:

1. ADSL line connector
2. On/Off button
3. Power input
4. Ethernet connectors
5. USB host connector

Side view:

1. RS-232 port

3 COMPLIANCE

Name	Type
Radio compliance	EN 301 893
EMC compliance	EN 301 489-1
Safety compliance	EN 60950

Table 1: Compliance

4 EQUIPMENT PACKING LIST

The AMRG product package contains:

1. One AMRG Rev.2.0 device
2. One Plug-In AC adapter, Emerson DA12-120EU-M
3. Two Telephone line cables (RJ-11), TEL-0011
4. One Ethernet cable (RJ-45), UTP-0008-2GY
5. One Line Splitter, CMP-ADSLSPLIT1
6. This installation guide
7. One user manual

5 SYSTEM REQUIREMENTS

Supported Operating systems:

Windows® 8 , 32bit/64bit,
 Windows® 7 , 32bit/64bit,
 Windows® Vista , 32bit/64bit,
 Windows® XP , 32bit/64bit,
 Mac OS X,
 Linux

Computer connections:

2.4 GHz wireless adapter, IEEE 802.11a/b

5 Ethernet ports, IEEE 802.3 10/100

6 INSTALLATION

6.1 ROUTER CONNECTIONS

6.1.1 Cable connections on the back panel

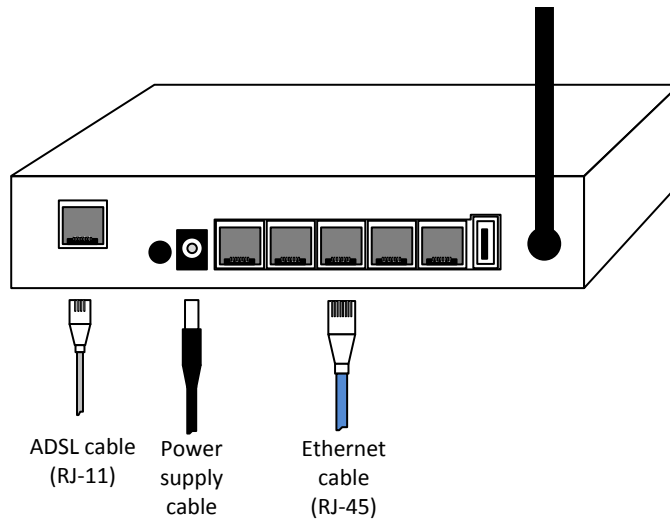


Figure 4: Router connections

- Connect the ADSL line cable in the Line input of the router
- Connect an Ethernet cable from the PC in one of the Ethernet ports
- Connect the Power Supply cable in the 12V IN connector

6.1.2 Connection of a line splitter

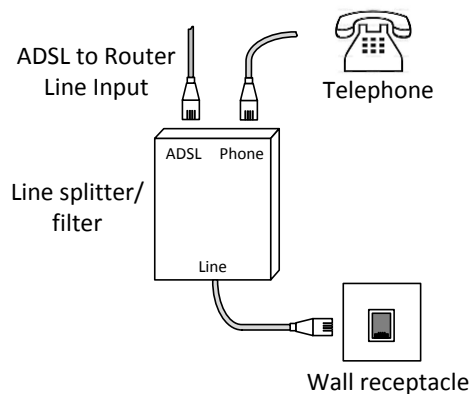


Figure 5: Line splitter

- Connect the ADSL line cable from the router to the ADSL port of the splitter
- Connect the telephone to the Phone port
- Connect the telephone line cable to the Line port

6.1.3 Connection to power

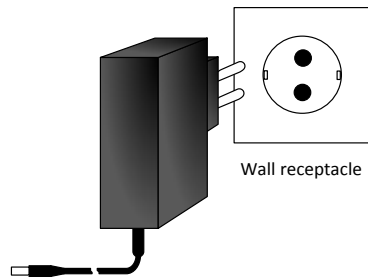


Figure 6: Power supply

- Plug the wall AC/DC adapter to the mains
- Press the On/Off button of the router

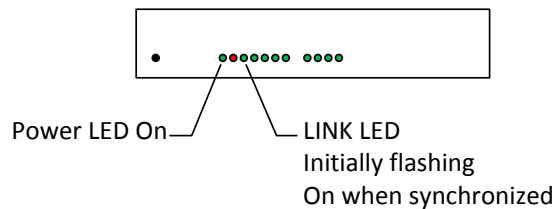


Figure 7: Power and LINK LEDs working

- The PWR LED should turn On
- Wait until the DATA LED turns On
- The LINK LED should flash for a few seconds and then remain On, indicating that the router is synchronized to the ADSL line

6.2 ROUTER INITIAL CONFIGURATION

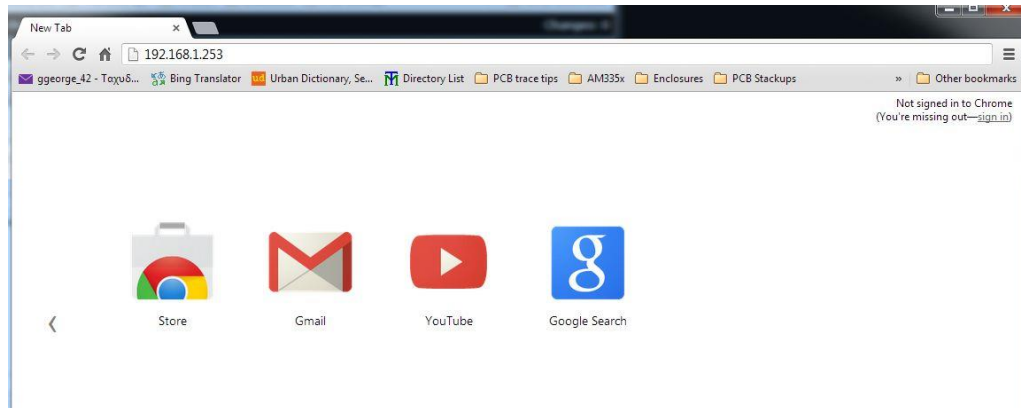
The following procedures are independent of the O.S of the computer

Note:

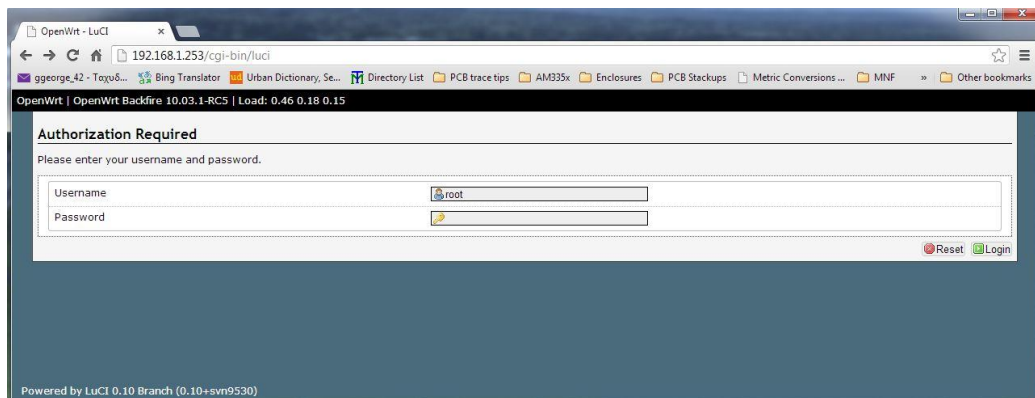
For advanced configuration and programming, please refer to the AMRG User Guide, available at the CSE web site.

6.2.1 Access through the web browser

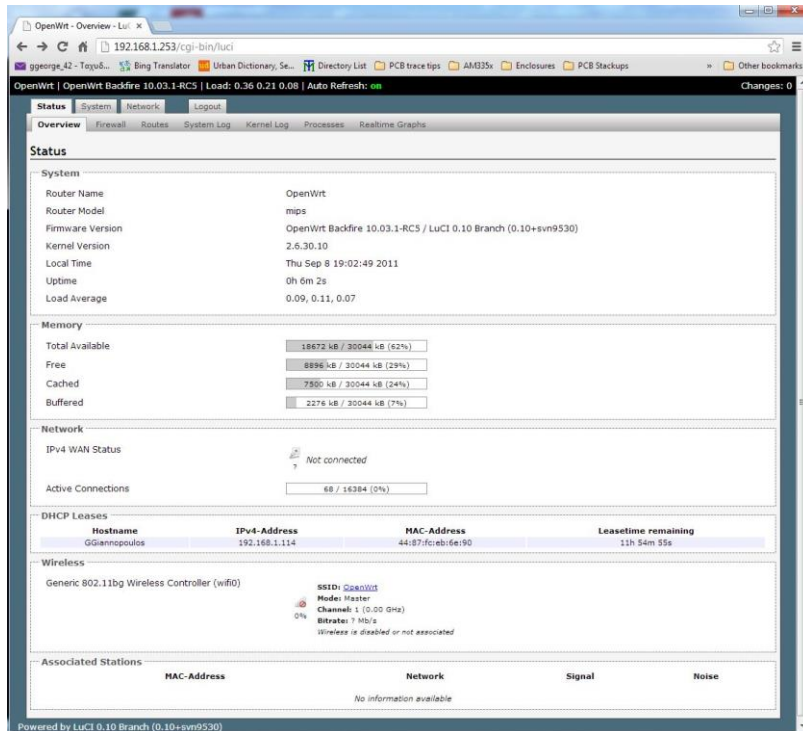
- Once the router is connected to the PC open a web browser and type the IP address 192.168.1.253 in the address bar



- The login screen appears:

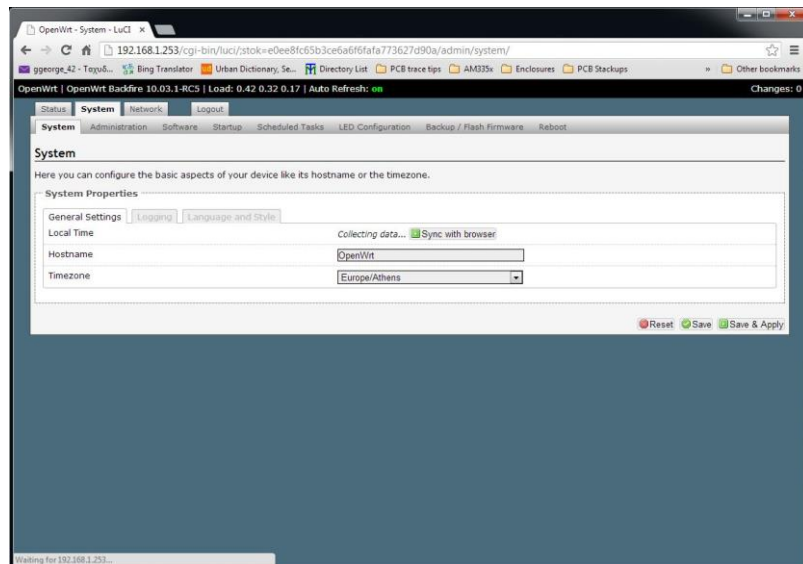


- The default user name is “root” and the default password field is empty
- Click Login
- The overview screen appears, giving a comprehensive report of the router’s status:



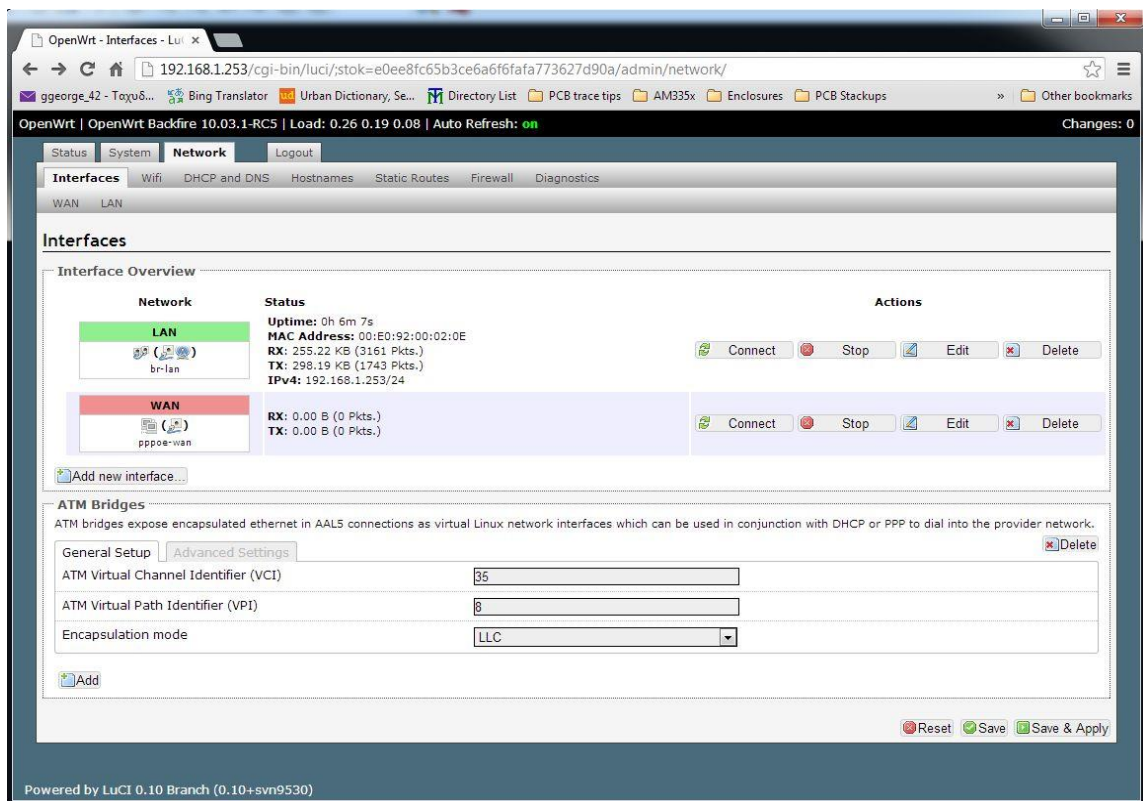
6.2.2 Timezone setting

- Click the System tab
- In the Timezone drop down list check the setting and adjust as needed



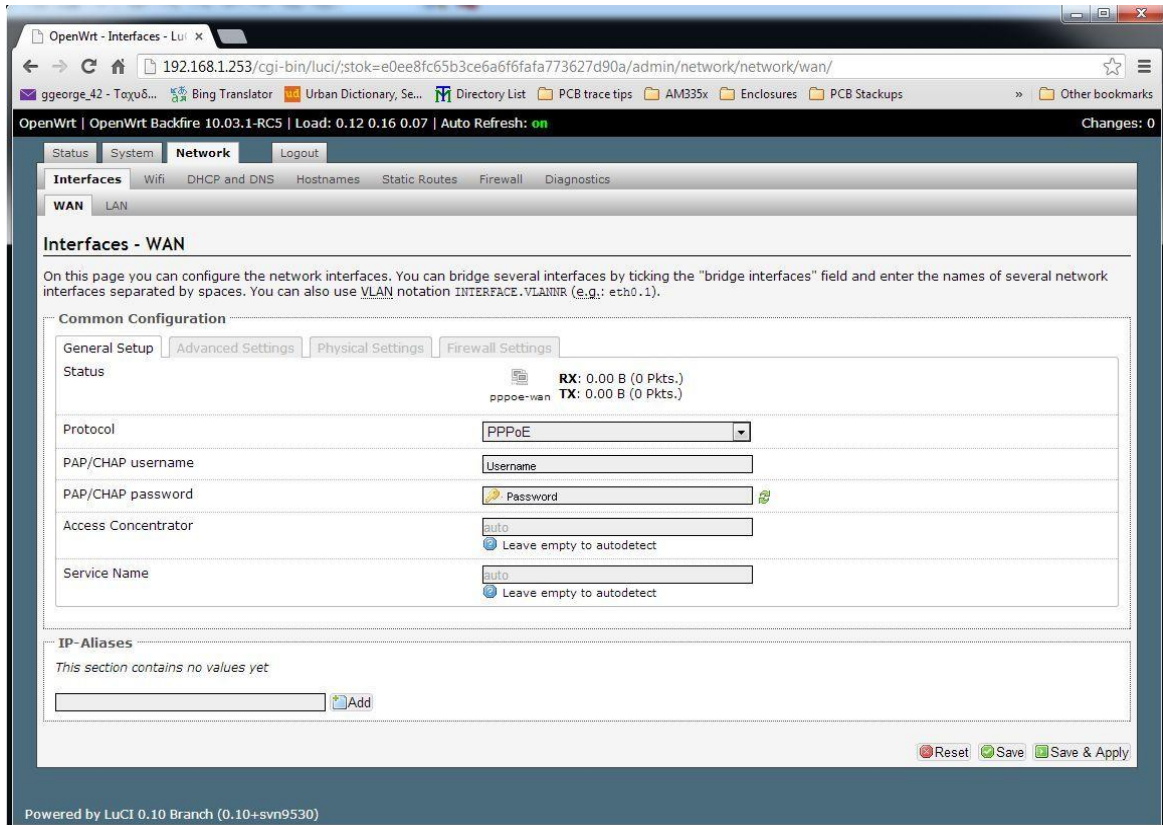
6.2.3 Interface settings

- Click the Network tab
- In the Interface section check the VCI/VPI and Encapsulation settings
- The default settings are:
 - VCI: 35
 - VPI: 8
 - Encapsulation mode: LLC
- Check your provider's information in order to adjust these parameters to your area defaults



6.2.4 WAN settings

- Click the WAN tab
- In the PAP/CHAP fields enter your internet user name and password, corresponding to the connection with your provider

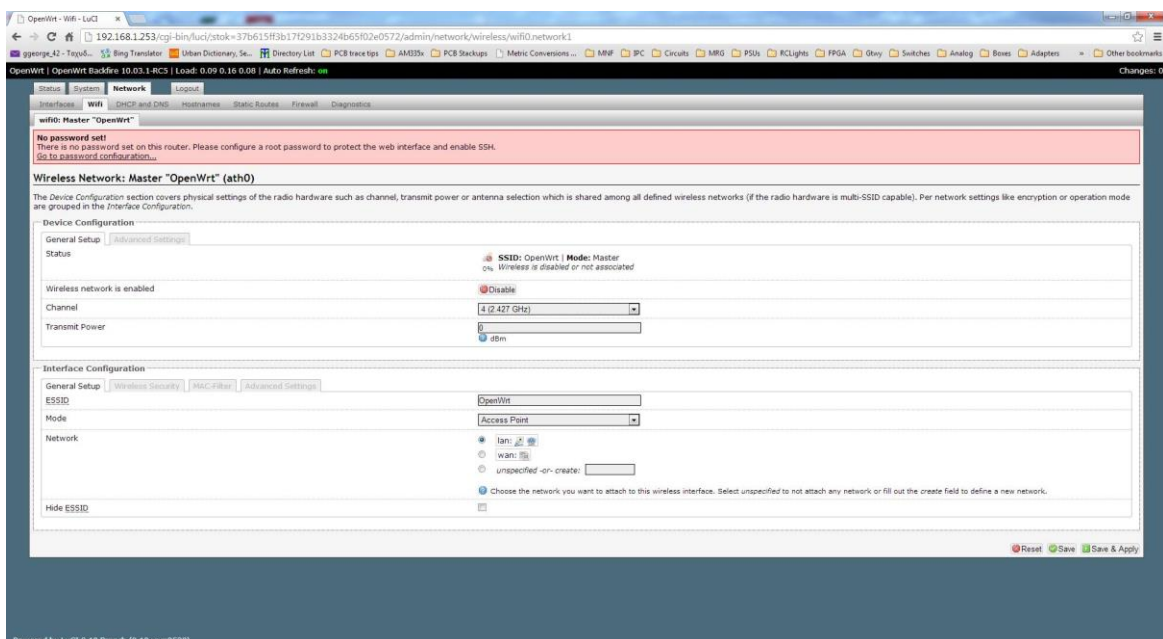


The screenshot shows the OpenWrt LuCI interface for configuring WAN interfaces. The page title is "Interfaces - WAN". It includes a "Common Configuration" section with tabs for "General Setup", "Advanced Settings", "Physical Settings", and "Firewall Settings". The "General Setup" tab is active, showing fields for Protocol (set to PPPoE), PAP/CHAP username, PAP/CHAP password, Access Concentrator (set to auto), and Service Name (set to auto). There are also "Reset", "Save", and "Save & Apply" buttons at the bottom right.

- Click Save & Apply
- Wait for reboot

The router should be ready for use

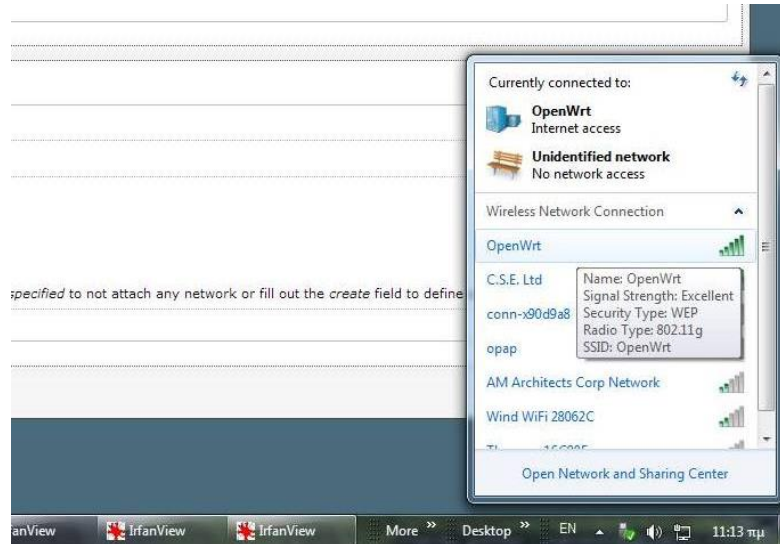
6.2.5 WiFi settings



The screenshot shows the OpenWrt LuCI interface for configuring WiFi settings. The page title is "WiFi: Master 'OpenWrt'". It includes a "Device Configuration" section with tabs for "General Setup", "Advanced Settings", "Physical Settings", and "Firewall Settings". The "General Setup" tab is active, showing fields for SSID (set to OpenWrt), Mode (set to Master), Wireless network is enabled (checked), Channel (set to 4 (2.427 GHz)), and Transmit Power (set to 0 dbm). There are also "Reset", "Save", and "Save & Apply" buttons at the bottom right.

- Click the WiFi tab
- In the Channel field select a channel other than auto
- Click Save & Apply

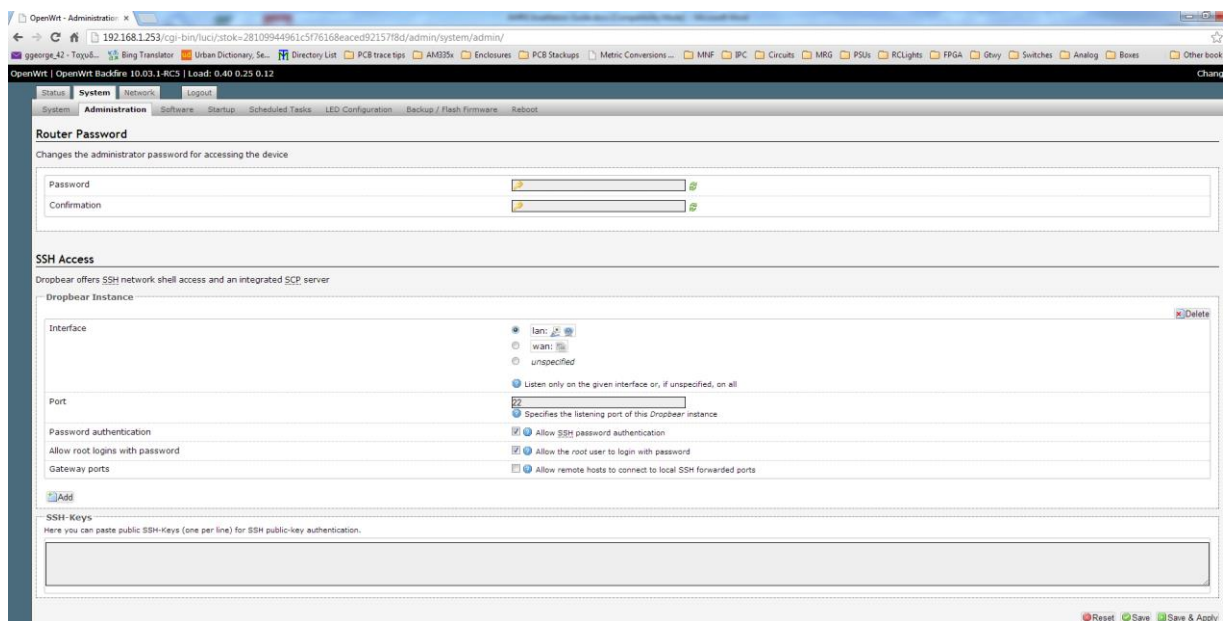
The WiFi will be activated under the name “OpenWrt”:



6.2.6 Changing the Administrator password

You can change the AMRG administrator password as follows:

- Click the System tab
- Click the Administration tab



- Type the new password and retype it in for confirmation
- Click the Save & Apply button

Attention:

Once the Administration password has been changed, it cannot be restored to the default except by reprogramming the AMRG. For information regarding the reprogramming procedure, please refer to the AMRG User Guide, available at the CSE web site.

6.3 TROUBLESHOOTING

Problem	Action
The AMRG has no power The "PWR" LED is OFF	Check that the power supply cable is plugged all the way into the "12V IN" receptacle
There is no DSL connection The "LINK" LED flashes	Check that ADSL cable (RJ-11) is plugged on the line and into the "LINE" receptacle
The AMRG cannot be accessed from the web browser	Check that the Ethernet cable is connected and the LEDs of the corresponding Ethernet connector are operating Check that the IP address is correct
Forgot the AMRG Administration password	Please refer to the AMRG User Guide, available at the CSE web site, for information regarding the reprogramming procedure

Creative Systems Engineering Ltd
 45, Agiou Meletiou Str., 11257 Athens, Greece
 Tel: (+30) 210 8836433, Fax: (+30) 210 8836431
www.creativese.eu, info@creativese.eu, sales@creativese.eu, support@creativese.eu