

ELECTRIC PEN DRIVE SYSTEM

Reference Guide



INDICATIONS

The Electric Pen drive is indicated for screw insertion, pin and wire placement, cutting of bone and metal, drilling, reaming, decorticating, shaping, and smoothing of bones and teeth in a wide variety of surgical procedures, including but not limited to general orthopaedic trauma, foot, hand, maxillofacial, neurosurgical, oral, otolaryngological, reconstructive, and spine surgery.

Caution: Please review the Electric Pen Drive User's Manual prior to use for indications and other important information.

CONSOLE

Slide control

For adjusting maximum speed for Drive Unit 2

Slide control

For adjusting maximum speed for Drive Unit 1

ON/OFF LED

Connector

For Light Adaptor for Small Battery Drive/ Small Battery Drive II

Connector

For Drive Unit 1

Connector

For Drive Unit 2



Selection switch

For torque limiting

Selection switch

For irrigation

Flow rate adjustment knob

For irrigation

Irrigation pump

Connector

For Foot Switch

*Wipe clean only with a cloth moistened with disinfectant. Do not immerse, rinse or sterilize.

CONSOLE SETUP

- Confirm that the power switch is in the OFF (⏻) position.
- Connect the console to a power outlet using the supplied electrical cord.
- Turn on the console by setting the power switch to the ON (⏻) position.
- The LED marked (💡) on the front of the console will illuminate, indicating that the console is under power.



- To connect the cable for the Drive Unit, align the red dot on the metal plug with the red dot on the connector and push the plug into the connector.
- To remove the cable, retract the release sleeve on the plug and pull back.
- Do not pull on the cord to disconnect, as this may damage the cable or console.



DRIVE UNIT SETUP

- Always slide the lock in the direction of the arrows before turning the mode switch. The lock will automatically return to the locked position.
- To insert the black plug into the Drive Unit, ensure that the mode switch on the Drive Unit is in the cable insertion/removal (🔌) position. Align the groove on the plug with the notch in the mode switch and insert the plug.



Cable Insertion/Removal

- Once the cable connector is inserted, turn the mode switch to the lock (🔒) position. The cable is now firmly locked into the Drive Unit and the Drive Unit is in the off mode.
- To remove the cable, return the switch to the cable insertion/removal position (🔌) and pull gently on the plug. Do not pull on the cable, as this may damage the Drive Unit or plug.



Lock (Drive Unit OFF)

DRIVE UNIT SETUP (continued)

- To attach the Hand Switch to the Drive Unit, align the arrows on the sides of the Hand Switch with the positioning arrows on the Drive Unit. Press down on the Hand Switch until it clicks into place on the Drive Unit.





- The Drive Unit can now be operated by using the Hand Switch. The blue switch on the Hand Switch can also be used to lock the Drive Unit.



DRIVE UNIT OPERATION

The mode switch located on the base of the Drive Unit is used to lock or change rotational direction of the Drive Unit. The switch is also used during the insertion and removal of the Drive Unit cable. Always slide the lock before turning the mode switch.

 For insertion or removal of the cable.
Drive Unit will not function in this position.

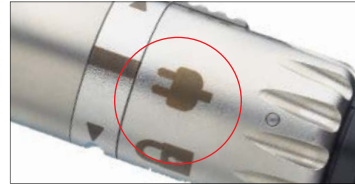
 Locked position prevents accidental operation of the Drive Unit

 Clockwise rotation

 Counterclockwise rotation



Locking mechanism for mode switch



Cable Insertion/Removal



Lock (Drive Unit OFF)



Forward (clockwise)



Reverse (counterclockwise)

ATTACHMENT INSERTION

Important: To prevent injuries, the mode switch on the Drive Unit or the On/Lock switch on the Hand Switch should be in the Lock position when inserting or removing attachments or instruments.

- Turn the release ring clockwise until it locks in the open position. The release ring will protrude slightly from the main body of the Drive Unit.
- Insert the attachment into the coupling, aligning the position pins of the attachment with the grooves on the release ring.
- Press the attachment lightly against the Drive Unit. The release ring will lock automatically.
- Pull lightly on the attachment to confirm that it is secure.



ATTACHMENT REMOVAL

While holding the Drive Unit with the attachment facing up, turn the release ring clockwise until it locks in the open position.



Remove the attachment. The release ring should stay in the open position, ready for the next attachment.



DRILLING SPEED ATTACHMENTS

Inserting an instrument

Instruments

| | |
|------------|---|
| 05.001.030 | Drill Attachment, mini quick coupling |
| 05.001.031 | Drill Attachment, J-latch coupling |
| 05.001.032 | Drill Attachment, AO coupling |
| 05.001.033 | 45° Oscillating Drill Attachment, mini quick coupling |
| 05.001.042 | 45° Drill Attachment, mini quick coupling |
| 05.001.043 | 45° Drill Attachment, J-latch coupling |
| 05.001.044 | 45° Drill Attachment, AO coupling |
| 05.001.110 | Drill Attachment, hex coupling |



Pull back the collar of the attachment and insert the instrument, turning it slightly to align the keyway.

Release the collar of the attachment and pull lightly on the instrument to confirm that it is secure.

DRILLING SPEED ATTACHMENTS (continued)

Inserting an instrument in 90° Drill Attachment

Instruments

| | |
|------------|--|
| 05.001.035 | 90° Drill Attachment, short, mini quick coupling |
| 05.001.036 | 90° Drill Attachment, long, mini quick coupling |

Move the locking lever of the attachment to the side as indicated by the arrow on the attachment.



DRILLING SPEED ATTACHMENTS (continued)

Insert the instrument, turning it slightly to align the keyway.



Lock the instrument in place by pushing the locking lever back. Pull lightly on the instrument to confirm that it is secure.



SCREW INSERTION ATTACHMENTS

Inserting an instrument

Instruments

| | |
|------------|---------------------------------------|
| 05.001.028 | Screw Attachment, AO coupling |
| 05.001.029 | Screw Attachment, hex coupling |
| 05.001.034 | Screw Attachment, mini quick coupling |

Pull back the collar of the attachment and insert the instrument, turning it slightly to align the keyway.

Release the collar of the attachment and pull lightly on the instrument to confirm that it is secure.



K-WIRE ATTACHMENT

Inserting a K-wire

Instrument

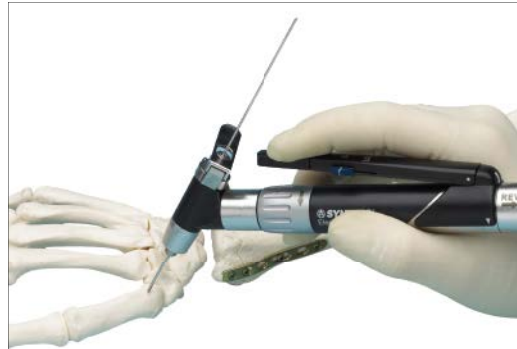
05.001.037 K-Wire Attachment

Press the tensioning lever and insert a Kirschner wire into the attachment. The tensioning lever can be rotated 300° for surgeon preference.

Release the tensioning lever to grip the wire. The wire can now be inserted into the bone.

Repositioning or removing a K-wire

To reposition the wire in the attachment, press the tensioning lever and pull back the unit along the Kirschner wire. Release the tensioning lever once the wire is repositioned.



SAGITTAL SAW ATTACHMENTS

Inserting a saw blade in Sagittal Saw Attachment

Instruments

| | |
|------------|----------------------------------|
| 05.001.039 | Sagittal Saw Attachment |
| 05.001.183 | Sagittal Saw Attachment, in-line |
| 05.001.182 | Sagittal Saw Attachment, 90° |
| 05.001.074 | Handhold for Tool Change |

Press the clamping button on the attachment.

Insert a sagittal saw blade into the saw blade coupling and move it into the desired position (variable in 45° increments).

Release the clamping button. Pull lightly on the saw blade to confirm that it is secure.



RECIPROCATING SAW ATTACHMENT

Inserting a saw blade or rasp

Instruments

| | |
|------------|------------------------------|
| 05.001.040 | Reciprocating Saw Attachment |
|------------|------------------------------|

| | |
|------------|--------------------------|
| 05.001.074 | Handhold for Tool Change |
|------------|--------------------------|

Turn the release ring on the attachment clockwise until it locks in place.

Insert a saw blade or rasp into the coupling, turning it slightly to align the keyway. The instrument will automatically lock in place. Pull lightly on the instrument to confirm that it is secure.



OSCILLATING SAW ATTACHMENT

Instruments

| | |
|------------|----------------------------|
| 05.001.038 | Oscillating Saw Attachment |
|------------|----------------------------|

| | |
|------------|--------------------------|
| 05.001.074 | Handhold for Tool Change |
|------------|--------------------------|

Pull back the collar of the attachment.

Insert a saw blade into the saw blade coupling and move it into the desired position.

Release the collar. Pull lightly on the saw blade to confirm that it is secure.



BURRING SPEED ATTACHMENTS

DePuy Synthes Power Tools recommends using a new burr for each surgery, as used burrs may increase the risk of necrosis and increase the cutting time. All burrs are sold sterile.

Burrs should only be used with the attachment for which they were intended, or with an attachment one size shorter than the burr. For example, a medium burr should only be used in a medium or a short attachment. Long burrs can be used in the long and medium attachments as well as the XL and XXL attachments. Use only *DePuy Synthes Power Tools* burrs. The use of other cutting tools voids the device warranty.

Instruments

| | |
|-------------|---------------------------------|
| 05.001.045 | Burr Attachment, short |
| 05.001.046 | Burr Attachment, medium |
| 05.001.047 | Burr Attachment, long |
| 05.001.048 | Burr Attachment, short, angled |
| 05.001.049 | Burr Attachment, medium, angled |
| 05.001.050 | Burr Attachment, long, angled |
| 05.001.055* | Burr Attachment, XXL, angled |
| 05.001.063* | Burr Attachment, XL, angled |
| 05.001.074 | Handhold for Tool Change |

BURRING SPEED ATTACHMENTS (continued)

Attach the burring attachment to the Drive Unit or insert it in the Handhold for Tool Change.

Turn the release ring of the burring attachment to the UNLOCK position.



BURRING SPEED ATTACHMENTS (continued)

Insert the burr as far as possible, turning it slightly to align the keyway. The burr is fully inserted when the S, M, or L mark on the burr shank is no longer visible.

Turn the release ring of the attachment to the LOCK position and pull lightly on the instrument to confirm that it is secure.

Correct and incorrect insertion of the burr.



Correct



Incorrect

DRILL BURR ATTACHMENT

Instrument

05.001.123 Drill/Burr Attachment, for 2.35 mm shafts



This attachment is available for users who wish to use burs and drill bits with a 2.35 mm diameter round shaft.

To insert the cutting tool into the attachment, follow the steps described for the burring attachments that use the *DePuy Synthes Power Tools Electric Pen Drive* cutting tools.


To ensure proper fixation, the cutting tool must be inserted at least 20 mm deep into the attachment and the attachment locked in place.

SMALL ELECTRIC DRIVE

Instruments

| | |
|------------|------------------------------------|
| 05.001.175 | Small Electric Drive |
| 05.001.186 | Quick Coupling for Kirschner Wires |

Use of the Small Electric Drive with the Electric Pen Drive console adds the adaptability of a pistol, shaped handpiece.

To connect the adaptor cable to the console, align the red dot on the plug with the red dot on the connector for the Small Electric Drive  and push the plug into the connector. Do not force the plug into the connector as this may damage the plug and/or the console.

For complete instructions on the use of the Small Electric Drive, see the User's Manual.



LIGHT ADAPTOR FOR SMALL BATTERY DRIVE

Instruments

05.001.108 Light Adaptor for Small Battery Drive

532.110* Small Battery Drive II

The Light Adaptor for Small Battery Drive allows the user to power the Small Battery Drive II Handpiece with the Electric Pen Drive Console.


Insert the adaptor into the Small Battery Drive II Handpiece, confirming the contacts on the adaptor align with the contacts in the recess of the Small Battery Drive II Handpiece. Press firmly to ensure the adaptor is engaged correctly, and check by pulling handpiece lightly downward on the adaptor. For safety, the adaptor can be inserted fully only when in the correct orientation.



*Can also be used with 532.010 – Small Battery Drive

LIGHT ADAPTOR FOR SMALL BATTERY DRIVE (continued)

Connecting Light Adaptor for Small Battery Drive to console

To connect the adaptor cable to the console, align the red dot on the plug with the red dot on the connector for the Small Battery Drive () and push the plug into the connector. Do not force the plug into the connector as this may damage the plug and/or the console.



Limited Warranty and Disclaimer: DePuy Synthes USA products are sold with a limited warranty to the original purchaser against defects in workmanship and materials. Any other express or implied warranties, including warranties of merchantability or fitness, are hereby disclaimed.

WARNING: In the USA, this product has labeling limitations. See package insert for complete information.

CAUTION: USA Law restricts these devices to sale by or on the order of a physician.

To order in the US, call DePuy Synthes Power Tools Customer Service: (800) 327-6887.

Not all products are currently available in all markets.

Some devices listed in this Reference Guide may not have been licensed in accordance with Canadian law and may not be for sale in Canada. Please contact your sales consultant for items approved for sale in Canada.



COMPANIES OF *Johnson & Johnson*

**US Legal Manufacturer:
DePuy Synthes Products, LLC.**

1302 Wrights Lane East
West Chester, PA 19380
USA

Tel: (610) 719-5000
To Order: (800) 327-6887
Fax: (800) 327-6661

Email: infoPowerTools@DPYUS.jnj.com

www.depuyssynthes.com

**Canadian Legal Manufacturer:
Synthes Canada Ltd.**

2566 Meadowpine Boulevard
Mississauga, Ontario L5N 6P9
Telephone: (905) 567-0440

To order: (800) 668-1119
Fax: (905) 567-3185