

Holmes®

Adjustable Tilt Personal Fan

HANF96

Owner's Guide



PLEASE READ AND SAVE THESE IMPORTANT INSTRUCTIONS

PLEASE READ AND SAVE THESE IMPORTANT SAFETY INSTRUCTIONS

When using electrical appliances, basic safety precautions should always be followed including the following:

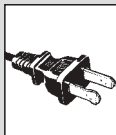
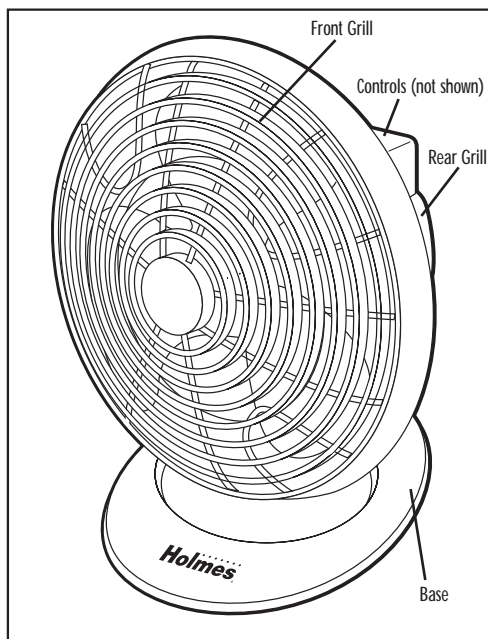
- Use fan only for intended use as described in instruction manual.
- To protect against electrical shock do not place fan in window, immerse unit, plug or cord in water or spray with liquids.
- Close supervision is necessary when any appliance is used by or near children.
- Unplug from outlet when not in use, when moving fan from one location to another, before putting on or taking off parts, and before cleaning.
- Avoid contacting moving parts.
- Do not operate in presence of explosive and/or flammable fumes.
- Do not place fan or any parts near an open flame, cooking or other heating appliances.
- Do not operate any appliance with a damaged cord or plug or after the appliance malfunctions, or has been dropped or damaged in any manner.
- The use of attachments not recommended or sold by the appliance manufacturer may cause hazards.
- Do not use outdoors.
- Do not let cord hang over edge of table or counter, or touch hot surfaces.
- To disconnect, grip plug and pull from wall outlet. Never yank on cord.
- Always use on a dry, level surface.
- Do not operate without fan grills properly in place.
- This product is intended for household use ONLY and not for commercial or industrial use.

PLEASE READ AND SAVE THESE IMPORTANT SAFETY INSTRUCTIONS

OPERATING INSTRUCTIONS

- Step 1: Set fan onto a dry, level surface.
- Step 2: Plug cord into any standard 120 volt AC outlet. Please make sure the Selector (Speed) Control is in the "O" Off position.
- Step 3: Selector (Speed) Control is located behind the rear grill. The speed is adjusted by turning the control knob to the desired setting, Off-High-Low. (O-II-I)

ILLUSTRATIONS



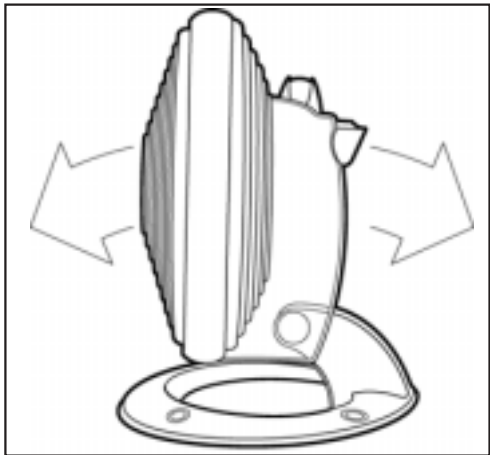
THIS PRODUCT IS EQUIPPED WITH A POLARIZED AC (Alternating Current) PLUG (a plug having one blade wider than the other). This plug will fit into the power outlet only one way. If the plug does not fit fully into the outlet, reverse the plug. If it still does not fit, contact qualified personnel to install the proper outlet.

DO NOT DEFEAT THE SAFETY PURPOSE OF THIS POLARIZED PLUG IN ANY WAY.

TILT ADJUSTMENT

Carefully move or adjust fan head to desired tilt.

WARNING: Please grasp Fan BASE with one hand while you gently adjust the tilt.



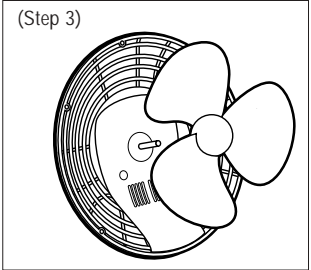
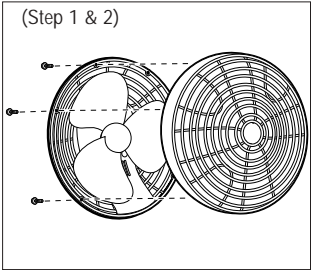
CLEANING/MAINTENANCE

Follow these instructions to correctly and safely care for your Holmes personal fan. Please remember:

- Always unplug the fan before cleaning or disassembling.
- Do not allow water to drip or enter the fan housing.
- Be sure to use a soft cloth moistened with mild soap solution.
- Do not use any strong cleaner (gasoline, thinner, benzine).

Fan Blade Cleaning:

- STEP 1: Use a screw driver to loosen the screws at the rear of the rear guard/grill.
- STEP 2: Remove front guard/grill from the rear guard grill.
- STEP 3: Pull the blade off its shaft then, clean the blade with a soft cloth moistened with a mild soap solution.
- STEP 4: Take the reverse steps from step 3 to step 1 for re-assembling.



Fan Head and Base Cleaning:

Using a soft, moist cloth, with or without a mild, soap solution, carefully clean the fan base and fan head. Please be cautious around motor housing area.

Do not allow any water to be exposed to the motor or electronics.

FAN STORAGE

When you store your fan for the off season, it is important to keep it in a safe, dry location to protect the fan head from dust.

It is suggested to store in the original box (or an appropriately sized box).

SERVICE INSTRUCTIONS

1. Do NOT attempt to repair or adjust any electrical or mechanical functions on this unit. Doing so will void the warranty.
2. If you have any questions regarding this unit's operation or believe any repair is necessary, please write to our Consumer Service Department.
3. If you need to exchange the unit, please return it in its original carton, with a sales receipt, to the store you purchased it. If you are returning the unit more than 30 days after the date of purchase, please see the enclosed warranty.
4. If you have any other questions or comments, please write:

The Holmes Group, Inc.
CONSUMER SERVICE DEPARTMENT
P.O. Box 769
Milford, MA 01757-0769

or visit our website at www.holmesproducts.com

For your own records, staple or attach your sales receipt to this manual. Also, please take a moment to write the store name/location and date purchased below.

STORE NAME:

LOCATION:

DATE PURCHASED:

(STAPLE RECEIPT HERE)

ONE (1) YEAR LIMITED WARRANTY

SAVE THIS WARRANTY INFORMATION

- A. The quality controls used in the manufacture of this Holmes product are to ensure your satisfaction.
- B. The Warranty Registration Card enclosed with this product must be completed and returned within 10 days of purchase for your Warranty to be effective. This Warranty applies only to the original purchaser of this product.
- C. This Warranty applies ONLY to repair or replacement of any supplied or manufactured parts of this product that, upon inspection by Holmes authorized personnel, proves to have failed in normal use due to defects in material or workmanship. Holmes will determine whether to repair or replace the unit. This Warranty does not apply to installation expenses.
- D. Operating this unit under conditions other than those recommended or at voltages other than the voltage indicated on the unit, or attempting to service or modify the unit, will render this WARRANTY VOID.
- E. **Unless otherwise proscribed by law, Holmes shall not be liable for any personal injury, property or any incidental or consequential damages of any kind (including water damage) resulting from malfunctions, defects, misuse, improper installation or alteration of this product.**
- F. All parts of this Holmes product are guaranteed for a period of 1 year as follows:
 1. Within the first 30 days from date of purchase, the store from which you purchased your Holmes product should replace this product if it is defective in material or workmanship (provided the store has in-stock replacement.)
 2. Within the first twelve months from date of purchase, subject to the conditions in paragraph H, Holmes will repair or replace the product if it is defective in material or workmanship providing it is returned to Holmes, freight prepaid, with PROOF OF PURCHASE date, together with \$5.00 for handling and return packing/shipping charges.
- G. If you have any problem with this product, please write our Consumer Service Dept.
- H. **IMPORTANT Return INSTRUCTIONS** Your warranty depends on your following these instructions if you are returning the unit more than 30 days after the date of purchase:
 1. Carefully pack the item in its original carton or other suitable box to avoid damage in shipping.
 2. Before packing your unit for return; be sure to enclose:
 - a) your name, full address with zip code and telephone number,
 - b) a dated sales receipt or PROOF OF PURCHASE,
 - c) your \$5.00 check for return packaging, and
 - d) The model number of the unit and the problem you are having. (Enclose in an envelope and tape directly to the unit before the box is sealed.)
 3. Holmes recommends you insure the package (as damage in shipment is not covered by your warranty).
 4. All shipping charges must be prepaid by you (as noted in paragraph F).
 5. Mark the outside of your package:

HOLMES
THE HOLMES GROUP, INC.
32 B SPUR DRIVE
EL PASO, TX. 79906

SHIPPING AND HANDLING CHARGES: \$5.00

This warranty gives you specific legal rights, and you may have other rights which vary from state to state. The provisions of this warranty are in addition to, and not a modification of, or subtraction from, the statutory warranties and other rights and remedies contained in any applicable legislation. To the extent that any provision of this warranty is inconsistent with any applicable law, such provision shall be deemed voided or amended, as necessary, to comply with such law.