

USER MANUAL

Outdoor PTZ camera



PTZ-538WP

1. Camera connections

Camera has three cables outside:

1) RS-485 communication:

- violet (red): RS485 +
- gray (black): RS485 -

2) Video signal

- BNC socket: video composite signal

3) Power supply

- 2.1/5.5mm socket: DC12V / 800mA

2. RS-485 port configuration

The PTZ camera functions are controlled by RS-485 port. The port parameters can be set using DIP-Switches or via RS-485 interface.

To set the switches positions, you have to remove the camera dome cover (unscrew 4 screws), and next remove the plastic protection (4 screws).

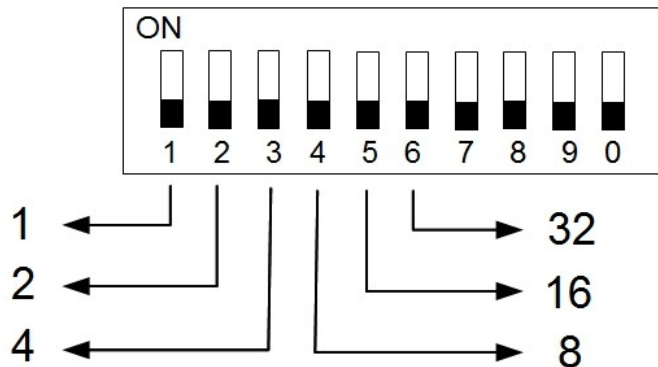
2.1 DIP-switches configuration

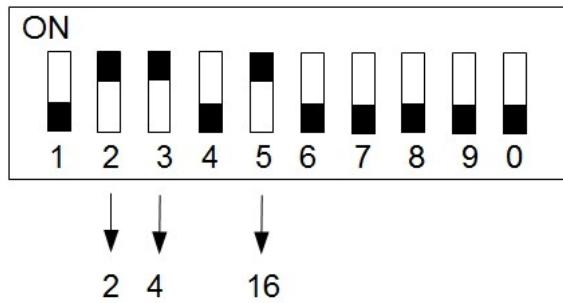
Device address setting:

The device address can be set in range: 1 – 63 (for PELCO-P: 0 – 63).

To enter the proper address you should use the **DIP1 – 6** switches and set the right combination according to below picture. The device address is the sum of the numbers from corresponding switches, which were set to ON position.

The ON/OFF switches and corresponding numbers:





Example: $2+4+16 = 22$. Address is 22.

Transmission baudrate settings:

- 1200 b/s DIP7 = ON, DIP8 = OFF
- 2400 b/s DIP7 = OFF, DIP8 = OFF
- 4800 b/s DIP7 = ON, DIP8 = ON
- 9600 b/s DIP7 = OFF, DIP8 = ON

Protocol settings:

- PELCO-P DIP9 = ON
- PELCO-D DIP9 = OFF

2.2 RS-485 interface configuration

ATTENTION: Requires the **PCR-485/P** remote control kit.

To set data transmission parameters using RS-485 interface, set the DIP10 to position OFF and use the **PCR-485/P** remote control kit.

- Switches configuration DIP10 = ON
- RS-485 interface configuration DIP10 = OFF

After connect the **PCR-485/P** remote control kit you have to set the required parameters, and next execute the following keys combination:

1. Keep pressed the **PRESET** key for 3 seconds,
2. Press the **SETUP** key.

After this sequence of operations the device will confirm the end of configuration procedure by display the „OK” information.

3. PTZ functions

Camera functions can be called by **CLEAR / SET / GOTO** preset commands. Available functions are listed in the below table:

3.1 SET (set preset)

Preset No.:	Function
1 ... 32	Set preset point
62	Set left limited point
63	Set right limited point
76	Set home point
77	Set home point delay time to: 64 s
78	Set home point delay time to: 128 s
79	Set home point delay time to: 192 s
80	Set home point delay time to: 255 s
81	Enable auto return home point
82	Disable auto return home point
92	Set left limited point
93	Set left limited point
94	Reset all points
240	Clean setup
241	Init system
242	Begin pattern setup
243	End pattern setup
247	Start pattern
248	Stop pattern

3.2 CLEAR (clear preset)

Preset No.:	Function
1 ... 32	Clear preset point
62	Clear left limited point
63	Clear right limited point
76	Clear home point
92	Clear left limited point
93	Clear right limited point

3.3 GOTO (go to preset)

Preset No.:	Function
1 ... 32	Goto preset point
34	Goto pan zero point
76	Goto home point
92	Goto left limited point
93	Goto right limited point
99	Start auto scan

4. Technical specification

Sensor	1/4" SONY SUPER HAD CCD II
Resolution	480 TVL
Lens	3.8 ... 38 mm
View angle	Manufacturer data: 50° ... 5.4° Our tests result: 43° ... 5°
Min. illumination	0.001 Lux
Video output	1 Vpp / 75 Ω
Electronic shutter	1/50 s ... 1/100000 s
Camera auto functions	AGC
Max. rotation speed	Vertical: 12 °/s Horizontal: 36 °/s
Rotation angles	Horizontal: 360° (continuous) Vertical: 0° ... 90°
PTZ control	via RS-485 interface
Protocol	Pelco-D, Pelco-P Baudrates: 1200, 2400, 4800, 9600 kbit/s
Operation temperature	-10°C ... 45°C
Weight (with bracket)	1.28 kg
Dimensions (without bracket)	Ø122 x 180 mm
Power supply	DC 12V / 800mA
Camera connectors	Video: BNC socket, Power supply: 2.1/5.5mm socket, RS-485: pair of wires