

SILVERCREST®

Universal USB Docking Station SUPB 520 A1

(GB) (IE)

User manual and service information

(FI)*

Käyttöopas ja huolto-ohjeet

(SE)*

Bruksanvisning och serviceinformation

(DK)*

Brugervejledning og serviceinformation



IAN 71034

(GB) (IE) (FI)
(SE) (DK)

FI*

Tämä käsikirja on saatavilla myös muilla kielillä sivuillamme www.lidl-service.com

SE*

Denna handbok är också tillgänglig på andra språk på vår hemsida www.lidl-service.com

DK*

Denne håndbog er også tilgængelig på andre sprog på vores hjemmeside www.lidl-service.com

Table of Contents

Safety Instructions	4
Intended Use	5
General safety instructions	6
Operational safety	7
Rechargeable battery	8
Operating environment/Environmental conditions	9
Cleaning and care	10
Conformity Notice	11
Disposal of Old Devices	11

Package Contents	13
Operation	14
Inserting the Rechargeable Battery.....	14
Charging the Power Bank	17
Charging a USB Device	19
Using the Device Holder	20
Appendix.....	23
Troubleshooting	23
Technical data.....	25
Warranty Information	26

Safety Instructions

Before you use this device for the first time, please read the following notes in this manual and heed all warnings, even if you are familiar with handling electronic devices. Keep this manual safe for future reference. If you sell the device or pass it on, it is essential that you also hand over this manual.



This icon denotes important information for the safe operation of the product and the user's safety.

Intended Use

The Power Bank SUPB 520 A1 is intended to be used exclusively to charge devices with a USB charger receptacle. Any use other than that mentioned above does not correspond to the intended use.

The manufacturer accepts no liability if:

- the Power Bank is not used in accordance with the intended use.
- the Power Bank is damaged or operated when incomplete or modified.
- devices are connected which cannot be charged via USB. Check the documentation for the device you wish to connect.

This is an information technology device. It may only be used for private purposes, not for industrial or commercial purposes.

If you are not using the device within the Republic of Germany, you must observe the regulations and laws in the country of use.



General safety instructions

- Electrical devices should not be operated by children or people with mental or physical disabilities. Do not allow these people to use electrical devices when not under supervision. They may not understand that they can be dangerous.
- Small parts can represent choking hazards. Please also note that there is a risk of suffocation if airways are blocked by the packaging film.
- If smoke, unusual noises or smells are noticed, disconnect all cables immediately. If this occurs the device should no longer be used and should be inspected by authorized service personnel.



Operational safety

Do not connect devices to the Power Bank which contain batteries, as these can explode during the charging process.

- Do not use an adapter plug or extension cable which is damaged or that does not meet the required safety standards.
- To disconnect a cable, hold the Power Bank and pull on the plug, not the cable. Make sure that the cable is not kinked and is not in anyone's way.
- If the Power Bank is exposed to significant temperature fluctuations, condensation can form and cause moisture which may cause a short circuit. If this occurs, use the Power Bank only after it has reached the ambient temperature.



Rechargeable battery

Never throw the rechargeable battery into fire! Never open or deform the rechargeable battery. Do not expose the rechargeable battery to extreme heat and avoid sunlight, for instance in a car.

Danger of Explosion!

Improper use may cause explosions and severe injuries. Replace the rechargeable battery only with a JTTEL Li-Ion battery recommended by the manufacturer, model: JT-5200XP. Never replace the battery in an explosion-sensitive environment. While inserting or removing the battery a spark may be produced that could cause an explosion. Explosion-sensitive areas will normally (but not always) be labelled. These include fuel storage areas such as below deck on a boat, fuel line or tank areas, environments where the air contains inflammable substances (e.g. cereals, dust or metal powder, etc.) and any areas where you should normally switch off your car engine.



Operating environment/Environmental conditions

- Keep the Power Bank away from moisture. Do not place any recipients containing liquids (beverages, vases, etc.) next to or on the device. Avoid any vibrations, dust, heat and direct sunlight otherwise the device may be damaged.
- Make sure that no fire hazards (e.g. burning candles) are placed on or near the device.



Cleaning and care

Disconnect the Power Bank from the USB socket, unplug all connected devices and remove the battery prior to cleaning otherwise the Power Bank and any connected devices may be damaged by short circuits.

If dirty, clean the device with a dry cloth or use a slightly damp cloth for stubborn dirt. Do not use any solvents, irritants or gaseous cleaners. No moisture must penetrate into the device.

When not using the Power Bank for a long time, recharge the battery every 3 months in order to maintain battery performance.

Conformity Notice



This device complies with the basic and other relevant requirements of the EMC Directive 2004/108/EC. The corresponding Declaration of Conformity can be found at the end of this User's Manual.

Disposal of Old Devices



Devices marked with this symbol are subject to the European Directive 2002/96/EC. All electric and electronic devices must be disposed of separately from household waste at official disposal centres. With proper disposal of old devices you avoid damage to the environment and to your health. For further information about proper disposal, contact your local government, recycling centres or the shop where you bought the device.

Respect the environment. Old rechargeable batteries do not belong in with domestic waste. They must be handed in to a collection point for waste batteries.

Recycle the packaging material properly too. Cardboard packaging can be taken to paper recycling containers or public collection points for recycling. Any film or plastic contained in the packaging should be taken to your public collection points for disposal.

Package Contents

Please check that delivery contents are complete using this list:

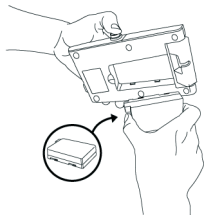
- SilverCrest SUPB 520 A1 Power Bank
- Rechargeable JTTEL Lithium-Ion battery, model: JT-5200XP
- Rubber wedge (inserted into the Power Bank)
- USB cable (Mini-USB to USB)
- Pouch
- This User's Manual

If you find any items missing or damaged, please phone our hotline. You will find the corresponding phone number in the last chapter “Warranty Information”.

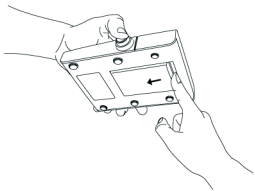
Operation

Inserting the Rechargeable Battery

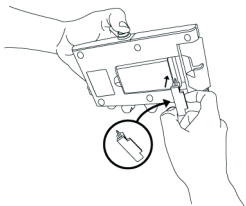
To insert the rechargeable battery, proceed as follows:



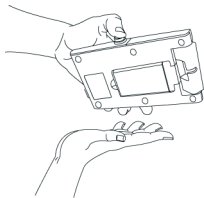
The battery compartment is located on the bottom of the Power Bank. First remove the rubber wedge, then insert the rechargeable battery. The battery can be inserted in one direction only.



Slide the rechargeable battery to the opposite side.



Place the rubber wedge next to the rechargeable battery.



Make sure the battery is well fixed in the compartment.



Only use the type of rechargeable battery supplied with your Power Bank. Using other types may damage the Power Bank and void the warranty.

Charging the Power Bank

Please fully charge your Power Bank before using it for the first time. You cannot charge a USB device whilst the Power Bank is being charged.

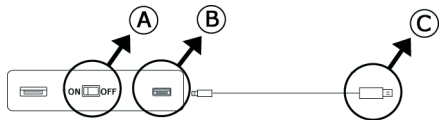
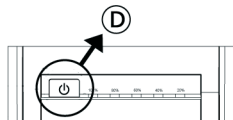
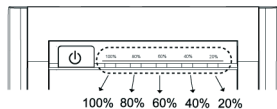


Fig.: Power Bank back panel



- A Slide the switch to the “ON” position
- B Insert the small plug of the supplied USB cable into this receptacle.
- C Insert the large plug of the supplied USB cable into a USB charger or a computer.
- D Press this button briefly to start the charging process. Press and hold this button for a few seconds to cancel the charging process.



While charging, the LEDs will illuminate from right to left. The permanently lighting LEDs indicate the current charging level. If the battery is fully charged, all LEDs are illuminated. You can then unplug the USB cable from the Power Bank.

The charging time depends on the performance of the connected power source. Computer USB ports normally provide a low charging current. In this case, fully charging the battery may take up to 13 hours. More powerful adapters will reduce the charging time accordingly.

Charging a USB Device

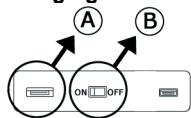
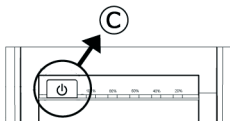


Fig.: Power Bank back panel

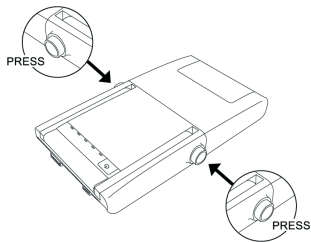


- A Connect the USB cable of the device you wish to charge here.
- B Slide the switch to the “ON” position
- C Press this button briefly to start the charging process. The charging level of the Power Bank will be indicated for a few seconds. To display the charging level again for a few seconds, press the button again. Press and hold this button for a few seconds to cancel the charging process.

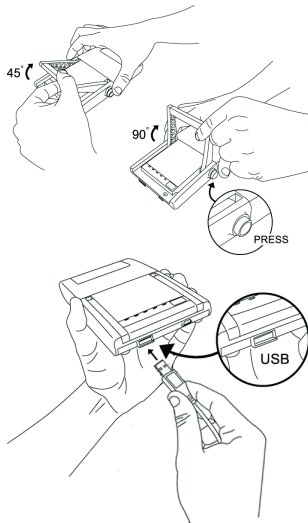
Note: To check the charging level of the connected USB device, please monitor the USB device charging indicator.

Using the Device Holder

You can also charge or use different devices by inserting them into the device holder. Proceed as follows:

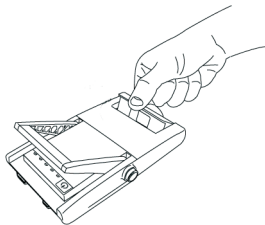


Simultaneously press the two buttons labelled "PRESS".

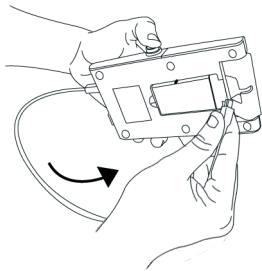


You can then adjust the desired device holder position. Keep the two buttons labelled “PRESS” pressed until you have positioned the device holder as desired.

Connect the USB cable of the device you want to charge to the Power Bank USB port.





Carefully rotate the front holder into the desired position.



Next place the other end of the USB cable into the front holder and connect it to the device that you want to charge. Now you can charge or use your device from the holder.

Appendix

Troubleshooting

Problem	Cause, action
A connected device is not charged	<p>Press the  button to start the charging process.</p> <ul style="list-style-type: none">• The Power Bank battery is empty: recharge the battery.• No USB connection to device: check the USB connection .• Some devices, especially mobile telephones, require a special USB charging cable which you can buy separately. This is not a malfunction of the Power Bank.• The connected device is faulty or cannot be charged via USB.
Power Bank is not charged	<ul style="list-style-type: none">• Press the  button to start the charging process.

	<ul style="list-style-type: none">• No USB connection to power source: check the USB connection .• The Power Bank battery is missing: insert the battery.
The 20%, 60% and 100% LEDs are flashing	<ul style="list-style-type: none">• The Power Bank battery is empty: recharge the battery.
The 60% LED is flashing	<ul style="list-style-type: none">• The connected device/USB cable is defective: check the connected USB device.

Technical data

Model	Power-Bank SUPB 520 A1
Dimensions (L x W x H)	17.1 x 11.8 x 2.6 cm
Weight (incl. rechargeable battery)	300 g
Connection input	Mini-USB port
Connection output	USB-A socket
Input voltage	5 V \equiv
Input current	500 mA
Output voltage	5 V \equiv
Output current	2,000 mA
Rechargeable Battery	Rechargeable JTTEL Lithium-Ion battery, model: JT-5200XP, 3,6V / 5400mAh / 19.44Wh
Compatibility	USB 2.0
Operating temperature	10°C to 35°C (max. 85 % RH)

36 month warranty from date of purchase

Please read the enclosed documentation or online help carefully before using the product for the first time. If there is a problem which can not be solved in this way, please contact our hotline.

If we are unable to solve the problem over the telephone, our hotline will arrange a further service dependant on the cause of the problem. This will comprise the elimination of production and material defects free of charge.

This warranty is valid in the United Kingdom / Ireland / Malta / Cyprus.

Please note that the warranty period for rechargeable batteries is 12 months. Consumables such as batteries and bulbs are excluded from this warranty.

Your statutory guarantees from the seller are in addition to this warranty and are not limited by it.

Hotline:

UK	0207 - 36 50 744
IE	01 - 242 15 83
MT	800 - 62 175
CY	800 – 92 496

Please have your EAN / serial number ready

Manufacturer:
TARGA GmbH
Postfach 22 44
D-59482 Soest
www.targa.de



EC-Declaration of Conformity

Address:

Targa GmbH
Lange Wende 41
59494 Soest, Germany

Product:

Universal Power-Bank
SilverCrest SUPB 520 A1

Model:

The product complies with the requirements of the following European directives:

2004/108/EC

Electromagnetic Compatibility

Compliance was proved by the application of the following standards:

EMC:

EN 55022 : 2006, class B + A1 : 2007
EN 55024: 1998 + A1:2001 +A2:2003

Year of CE marking:

2011

Soest, 14th of September 2011

Matthias Klauke, Managing Director

TARGA GMBH

Lange Wende 41

D-59494 Soest

Last Information Update - Tietojen edellinen päivitys

Informationen senast uppdaterad - Seneste informationsopdatering:

11 / 2011 - Ident.-No.: SUPB 520 A1 112011-2

IAN 71034