

Interchangeable Spiked and Rubber Feet (select models) (MAIN FIGURE)

Most Induro tripods include interchangeable Stainless Steel Spiked or Rubber Feet. They provide the right contact depending on the surface or terrain that the tripod will be used in. To remove the Rubber Feet simply unscrew each Rubber Foot counter-clockwise and replace with the provided Spiked Feet. Tighten the Spiked Feet using the included Wrench.

Accessory Short Column (FIGURE 9)

An accessory Short Column is available to replace the Standard Center Column for performance operation and low level camera positioning. To install, first remove Tripod Head, Locking Nut, Top Plate, Mounting Screw and Weight Hook. Loosen the Center Column Locking Knob and pull the Center Column out. Insert the new Short Column in place, tighten Center Column Locking Knob and reassemble Top Plate mounting parts, Tripod Head, and Weight Hook.

Multi-Function Spider Casting

The heavy-duty, extra-wide Magnesium Alloy cross-braced center casting was designed to provide the greatest core stability for your Induro Tripod. In addition, it includes an integral Bubble Level, removable Carrying Strap Loop and a dual threaded Accessory Mount.

USER NOTICE

- ① Do not exceed the maximum specified load capacity (see specifications on the package label or visit www.indurogear.com).
- ① Always ensure that Leg and Head Locks are tightly engaged before mounting any gear on your Tripod.
- ① Do not use any Tripod below temperatures of -4°F or above $+158^{\circ}\text{F}$ (-20°C / $+70^{\circ}\text{C}$).
- ① Always clean and dry any Tripod after it has been exposed to wet, dusty, sandy or salty conditions. Your Tripod is not recommended for use in salt water. If required, clean tripod using a mild soap solution applied with a soft cloth, rinse with fresh water and dry with soft towel. Remove any dust, dirt or sand from all Leg Locks, Leg Sections and all moving parts.
- ① Do not leave any Tripod in the sun for prolonged periods and avoid high temperature exposure.
- ① Avoid leaving any Tripod or Monopod unattended in areas where people could trip over the gear and get hurt.
- ① Remove camera, lens, and all gear from any tripod when transporting.
- ① For your safety, don't let your Induro gear come in contact with any electrical power source.

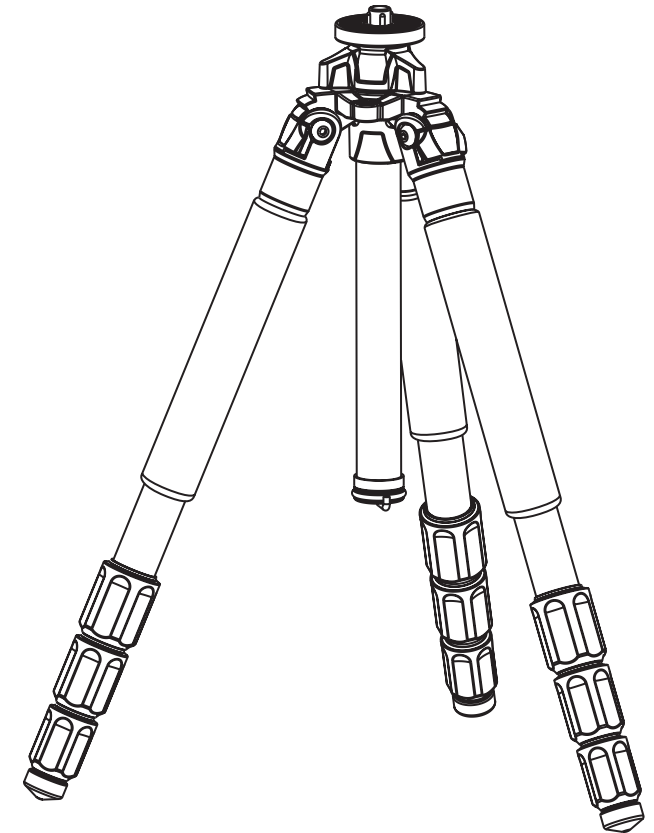
INDURO™

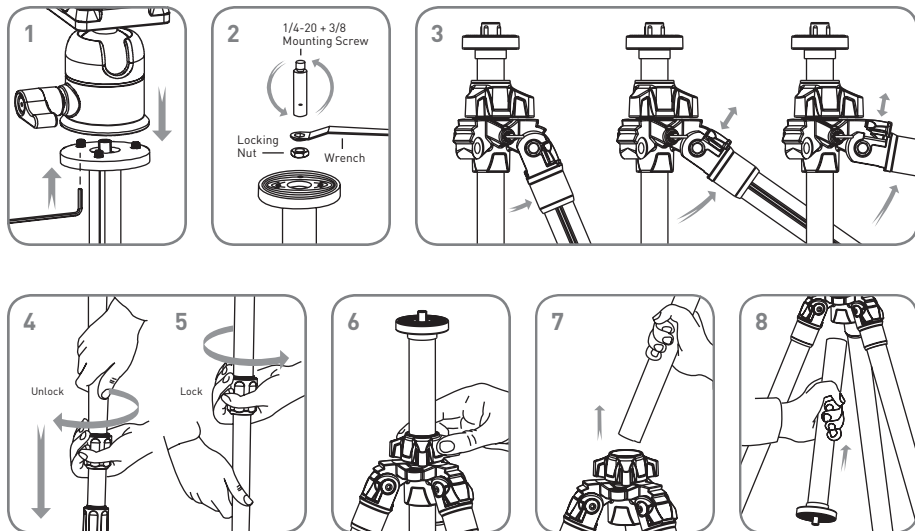
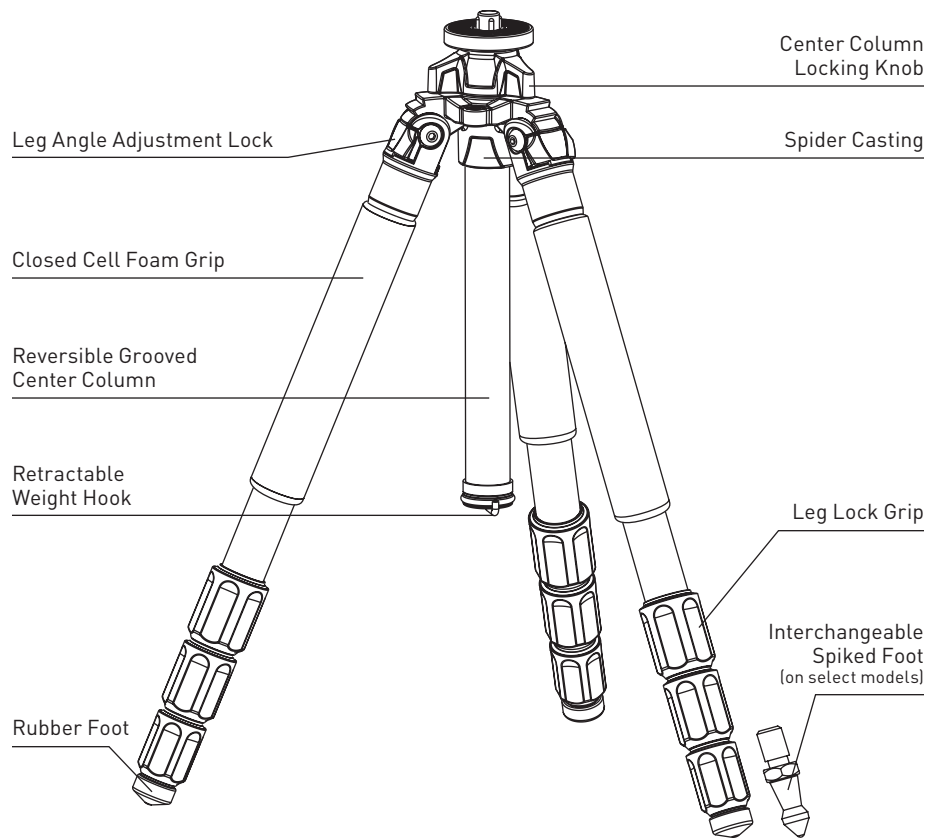
INDURO Camera Support Gear | 8 Westchester Plaza, Elmsford, NY 10523 | T 914-347-3300 | F 914-347-3309 | info@indurogear.com | indurogear.com

INDURO™

CT-SERIES & AT-SERIES TRIPODS OPERATING INSTRUCTIONS

Thank you for making Induro your choice for professional photographic gear. Your Induro gear is manufactured to provide years of dependable service. In order to obtain optimum satisfaction and performance we suggest that you carefully read these instructions and provide them to anyone who may also use your Induro gear.





SETUP

Head Mounting (FIGURES 1 & 2)

If your Tripod did not come with a Head, select one of the fine Induro Tripod Heads that match your size Tripod and install by screwing the Head clockwise onto the 3/8" Mounting Thread of the Top Plate. Once it is hand tight, secure by fully tightening the Head Locking Screw(s) from below with the included Allen Key.

Most Heads have a 3/8" base mount so your Induro Tripod is shipped with the 3/8 Mounting Thread exposed, but if the Head you choose uses a 1/4-20 you can attach it by simply reversing the Mounting Screw. To do this turn the Locking Nut counter-clockwise (using the supplied Wrench) until it becomes loose, and unscrew the Mounting Screw until it can be completely removed. Reverse the Screw, so that the threads are in position and screw it back into place, secure with the Locking Nut using the Wrench.

NOTE: Allow enough of the screw threads to be available for maximum security when the Tripod Head is mounted onto the Tripod. It's recommended that at least 5 to 6 threads be exposed before locking the Mounting Screw in place.

OPERATION

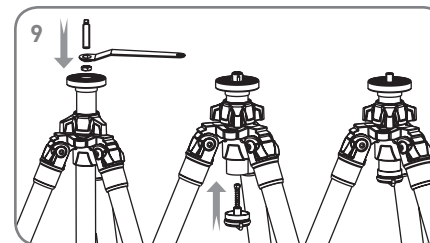
Before using your Tripod, adjust each Leg Section to the desired height and Leg Angle Setting.

Make sure that the Tripod is firmly resting on a level surface and mount your camera securely on the Tripod Head. Always engage any safety locks on the Tripod Head to prevent any accidental dismounting.

FOR BEST RESULTS: Do not raise the Tripod higher than necessary and extend the largest diameter Leg Sections first. Only extend the Center Column if required to reach maximum height or to fine-tune the vertical position.

FOR EXTRA STABILITY: Carefully hang your camera bag or other weight on the Retractable Spring-Loaded Weight Hook at the bottom of the Center Column.

NOTE: Never carry your Tripod with camera gear attached.



Leg Angle Adjustment (FIGURE 3)

To accommodate uneven terrain, awkward shooting situations or for low angle shooting, your Induro Tripod includes a 3-position Leg Angle Adjustment Sliding Lock. Each Leg can be adjusted by pulling the Leg Angle Lock out and selecting one of the three positions. Please make sure that the Leg Angle Lock is securely pushed back into the lock position after you have selected the desired Leg Angle.

Leg Section Adjustment (FIGURES 4 & 5)

Each Leg section can be adjusted to the desired length by turning the leg lock grip 1/2 turn (180°) clockwise until the Leg is free to slide in or out. Once the desired length is achieved, turn the Leg Lock Grip counter-clockwise until the Leg Section is securely locked. Repeat this step for each Leg and each Section until the Tripod is set to the desired height.

NOTE: To prevent any accidental damage to your gear, always remove any mounted equipment (camera, etc.) from the Tripod before adjusting the Leg Sections.

Raising and Lowering the Center Column (FIGURE 6)

To raise or lower the Center Column, turn the Center Column Locking Knob clockwise and set the Column to the desired position. While holding the Column in position, turn the Center Column Locking Knob counter-clockwise to secure the Column in place. Don't over-tighten the Center Column Lock, as this could damage the threads.

NOTE: Take special care when raising or lowering the Center Column, if a camera or equipment is mounted on the Tripod. Never loosen the Center Column Locking Knob without holding the Center Column. Failure to follow these instructions could result in damaged equipment.

Reversible Center Column (FIGURES 7 & 8)

Your Tripod has the ability to reverse the Center Column for close-up photography, copy work and for difficult to reach objects.

To reverse the Center Column, unscrew the Retractable Weight Hook located on the bottom of the Center Column. Loosen the Center Column Locking Knob and pull the Center Column out. Insert the Center Column through the bottom with the Mounting Plate upside-down and retighten the Center Column Locking Knob securely. The Center Column has an anti-twist groove, be sure to line-up the groove with the key before inserting the Column back into the Main Casting.

NOTE: Do not reverse the Center Column when a camera or equipment is mounted.