

For all of your electrical testing needs ...



 **AEMC**[®]
INSTRUMENTS
CHAUVIN ARNOUX GROUP

Technical Hotline: (800) 343-1391 • www.aemc.com

ELECTRICAL CONTRACTOR PRODUCTS

AEMC® Instruments offers a full line of professional electrical test tools for electrical contractors.



The hand strap on the side of the PowerPad™ Model 3945 allows one hand free to conduct the testing.

Power Quality Analysis

AEMC offers a full line of power quality and power factor meters, power transducers, power analyzers and accessories for extending measurement ranges. The wide range of applications includes electrical monitoring, harmonic detection and analysis, utility testing, energy management, power factor analysis, power demand and consumption, kW measurement, industrial power systems and commercial maintenance.

Software

DataView® is a full-featured data collection, analysis and reporting software package which includes great flexibility for customization of templates and reports to meet the most demanding requirements, combined with the ability to preset trend graphs, waveforms and data in real time on a PC. DataView® is a common platform to AEMC products and is currently supplied with various megohmmeters and power analyzers.



Megohmmeters

AEMC offers a full line of megohmmeters with test voltages of 50 to 5000V and the capability to measure insulation resistance up to 10TΩ. These rugged, weather resistant meters are accurate, reliable and built to perform. Battery, AC powered and hand-cranked models available.



The Digital/Analog Megohmmeter Model 1026 quickly verifies the isolation of all the connections in the box.



The Lightmeters are lightweight and compact. Their ergonomic design allows for easy one-hand operation.

Environmental Testing

Pre-installation testing of the environment can save you time and money. AEMC offers instruments to measure light, temperature, sound, moisture, carbon monoxide and more – all at a very affordable price.

Find us on the **WEB** at

**WWW.
AEMC
.COM**



Cable Tester Model CA7024 is used to check length of a power cable on a reel.

Cable Testers

AEMC's line of hand-held cable testers provides direct and simple push button operation. The testers indicate cable faults, cable length, common wiring faults and more. All models feature a large, blue electroluminescent backlit display.



Digital Multimeter Model CA5220 measuring voltage levels on an alarm touch pad.

Ground Resistance Testers

Whether you are doing a simplified 2-Point, a more complete 3-Point Fall-of-Potential test, a 4-Point soil resistivity test or a touch potential test, AEMC has the right instrument for you. Our revolutionary clamp-on ground resistance tester will save you both time and money. Whichever AEMC ground tester you choose, you can count on it to be of the highest quality, the most complete package and the simplest to learn to use.



Model 3731 performing a ground rod resistance check.

Professional Digital Multimeter

AEMC offers a complete line of hand-held digital multimeters. AEMC professional digital multimeters are tough, reliable and economical, and are offered in a choice of 2000-, 4000- and 40,000-count models.

Current Measurement Probes

AEMC offers a comprehensive line of clamp-on current probes that cover the entire spectrum of applications, from electrical panels to substations. AEMC Current Probes measure current without interrupting the circuit under test and extend the measuring capabilities of DMMs, recorders, power meters and loggers. The numerous jaw sizes are designed to accommodate a wide variety of conductor diameters and ranges. AEMC current probes are available for AC or DC measurements, and are the broadest line on the market.



Flexibility to easily measure where standard clamp-ons cannot.



Clamp-On Meter Model 502 monitoring phase current on a power panel.

Clamp-On Meters

AEMC offers a complete line of rugged and professional clamp-on meters that offer full functions including: AAC, ADC, VAC, Ohms, Continuity, Frequency, Diode Test, TRMS, %THD, %DF, CF Watts, Phase Rotation, Temperature and more. Varying in size, our clamp-on meters provide a solution to all electrical measurement needs.



The Circuit Breaker Identifier Model CBI-1 receiver scans a power panel.

Electrical Test Tools

AEMC offers a complete line of electrical test tools. Products include outlet testers, AC line splitters, voltage testers, circuit tracers and more.



The transmitter is plugged into a power outlet.



PowerPad™ Model 3945 displays waveforms in real time on your computer.

DataView®
Data Analysis and Reporting Software



DataView® is included with the PowerPad™ Model 3945.

**Three-Phase Power Quality Analyzer
PowerPad™ Model 3945**

True RMS single-, two- and three-phase measurements at 256 samples/cycle, plus DC

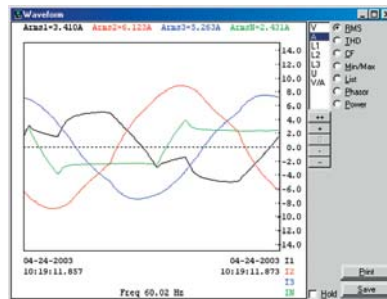


All models include three color-coded current probes (MN93 example shown), four color-coded 10 ft voltage leads, four color-coded alligator clips, RS-232 DB9F optically coupled serial cable, NiMH battery, US 120V power cord, DataView® software, carrying bag, soft carrying pouch and user manual.

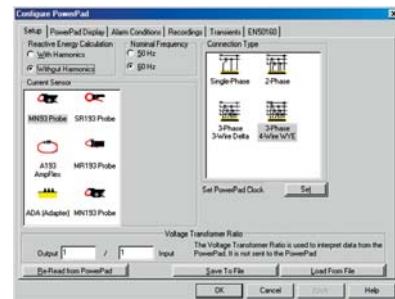


Sampling Frequency	256 samples/cycle
Data Storage	4MB partitioned for waveforms, transients, alarms and trend recording
Voltage (TRMS)	Phase-to-Phase: 960V Phase-to-Neutral: 480V
Current (TRMS)	MN Clamp: 5mA to 100mA/120A or 0 to 240A MR Clamp: 10 to 1000Aac, 10 to 1400Adc SR Clamp: 3 to 1200A AmpFlex™: 10 to 6500A ⁽¹⁾
Frequency (Hz)	40 to 69Hz
Other Measurements	kW, kVAR, PF, DPF, kWh, kVARh, kVAh, K-Factor, Flicker
Harmonics	1 st to 50 th , Direction, Sequence
Power Source	9.6V NiMH rechargeable battery pack AC Supply: 110/230VAC ±20% (50/60Hz)
Battery Life	≥ Eight hrs with display on; ≤ 35 hrs with display off (record mode)
Communication Port	Optically coupled RS-232
Display	1/4 VGA (320 x 240) color LCD
Dimensions	9.5 x 7 x 2" (240 x 180 x 55mm)
Weight	4.6 lbs (2.1kg)
Safety Rating	EN 61010, 600V Cat. III, Pollution Degree 2
Catalog No.(s) (depending on sensor)	
Model 3945 w/MN93 (240A) Probes with 10 ft leads:	Cat. No. 2130.75
Model 3945 w/SR193 (1200A) Probes with 10 ft leads:	Cat. No. 2130.76
Model 3945 w/24" AmpFlex™ 193-24 (6500A) Probes with 10 ft leads:	Cat. No. 2130.77
Model 3945 w/36" AmpFlex™ 193-36 (6500A) Probes with 10 ft leads:	Cat. No. 2130.78
Model 3945 w/MR193 (1000Aac/1400Adc) Probes with 10 ft leads:	Cat. No. 2130.79
Model 3945 w/MN193 (6A/120Aac) Probes with 10 ft leads:	Cat. No. 2130.80

⁽¹⁾Crest factor at 6500 = 1



Display real-time waveforms by phase, parameter or total when utilizing DataView® with the PowerPad™ Model 3945.



Clear and easy setup of all functions from one tabbed dialog box

1000V Digital/Analog Megohmmeter Model 1026

Provides four functional tests – AC voltmeter, DC voltmeter, ohmmeter and a continuity tester.



Test Voltage	250, 500, 1000V
Insulation Range	Up to 4000MΩ (4GΩ)
Resistance Range	Up to 4000Ω
Continuity Range	Up to 100Ω
Voltage Test	Up to 600VAC
Power Source	Eight 1.5V AA Alkaline batteries
Display	Digital/analog
Other	Hold & lock buttons
Dimensions	7.72 x 4.41 x 2.52"
Weight	1.45 lbs
Catalog No.	2117.72

1000V Hand-cranked Megohmmeter Model 1250N

Hand-cranked Megohmmeter is auto-ranging – dual scale operation for better sensitivity and easier readings.



Test Voltage	250, 500, 1000V
Insulation Range	Up to 5000MΩ (5GΩ)
Voltage Test	Up to 600VAC
Power Source	Hand-cranked
Display	Analog
Other	Sealed aluminum case
Dimensions	4.7 x 4.7 x 5.1"
Weight	3.3 lbs
Catalog No.	1326.02



Megohmmeter Model 1060 checking insulation resistance between windings on a three-phase motor

1000V Digital/Analog Megohmmeter Model 1045

Timer function for easy DAR and PI.



Test Voltage	250, 500, 1000V
Insulation Range	Up to 2000MΩ (2GΩ)
Resistance Range	Up to 400kΩ
Continuity Range	Up to 20Ω
Voltage Test	Up to 600VAC/DC
Power Source	Six 1.5V AA Alkaline batteries
Display	Digital/analog/backlight
Other	Alarm & timer
Dimensions	8.31 x 4.26 x 2.36"
Weight	1.81 lbs
Catalog No.	2116.93

Model 1045 also available as a kit (Cat. #2117.31)

1000V Digital/Analog Megohmmeter Model 1060

Includes computer interface and control.



DataView®
Data Analysis and Reporting Software



DataView® is included with the Model 1060.



Test Voltage	50, 100, 250, 500, 1000V
Insulation Range	Up to 4000GΩ (4TΩ)
Resistance Range	Up to 400kΩ
Continuity Range	Up to 40Ω
Voltage Test	Up to 1000VAC/DC
Power Source	NiMH battery or AC
Display	Digital/analog/backlight
Software/RS-232	DataView®
Dimensions	9.45 x 7.28 x 4.33"
Weight	7.5 lbs
Catalog No.	2130.03



The Carbon Monoxide Meter Model CA895 can be used to monitor CO levels in subway stations.

Lightmeter Models CA811 & CA813

Measure light in foot candles or LUX. Sensor has same response as the human eye.

Range	CA811: 20,000fc or 20,000lux CA813: 20,000fc or 200,000lux
Display Resolution	0.01fc or 0.01lux
Sensor	Silicon photodiode
Function	CA811: Hold & Max CA813: Hold & Peak
Spectral Response	CIE Photopic Curve
Accuracy	±3% of Reading ± 10cts
Sample Rate	2.5 times per second, nominal
Power Source	9V Alkaline battery
Display	2000-count/backlight
Dimensions	6.81 x 2.38 x 1.5"
Weight	Approx. 8 oz
Catalog No.(s)	CA811: 2121.20 CA813: 2121.21



Sound Level Meter Model CA832

Measure sound up to 130dB. Analog output ideal for data logging.



Moisture Meter Model CA847

Measurement range up to 100% of H₂O



Carbon Monoxide Meter Model CA895

Measure the level of carbon monoxide in the surrounding atmosphere from 0 to 1000ppm.



Measurement Range	80dB, 100dB, 130dB (Fast and slow response)
Measurement Rate	2.5 times per second
Frequency Range	8000Hz
Mode	F (fast) – 55ms & S (slow) – 550ms
Accuracy	±1.5dB
Resolution	0.1dB
Output	35 to 135dB
Precision	±2.0dB
Power Source	9V Alkaline battery
Display	2000-count/backlight
Dimensions	9.33 x 2.38 x 1.5"
Weight	Approx. 8.11 oz
Catalog No.	2121.23

Measurement Range	100%
Display Resolution	23% and 100% RH
Accuracy	±1 LED from 6 to 30% RH ±2 LEDs above 30% RH
Power Source	9V Alkaline battery
Display	20 LEDs on two scales
Dimensions	7.68 x 2.38 x 1.5"
Weight	Approx. 5.6 oz
Catalog No.	2121.25

Measurement Range	1000ppm
Resolution	1ppm
Sensor	Electrochemical
Accuracy	±5% of Reading ± 5ppm
Response Time	<70 seconds to 90% of the measurement
Power Source	9V Alkaline battery
Display	2000-count/backlight
Dimensions	9.33 x 2.38 x 1.5"
Weight	Approx. 6.2 oz
Catalog No.	2121.35

ENVIRONMENTAL TESTERS

Thermo-Hygrometer (Temp/RH) Model CA846

Accurate NTC sensor measures temperature in °F and °C.



MEASUREMENTS – Temperature	
Measurement Range	140°F or 60°C
Display Resolution	0.1°F or 0.1°C
Sensor	NTC sensor
Accuracy	32°F: ±2°F; 0°C: ±1°C 140°F: ±1°F; 60°C: ±0.5°C
Test Current	Automatic
MEASUREMENTS – Relative Humidity	
Measurement Range	100% RH
Display Resolution	0.1% RH
Sensor	Capacitive Humidity Sensor
Accuracy	±2.5% RH; ±5.0% RH
Power Source	9V Alkaline battery
Display	2000-count/backlight
Dimensions	6.81 x 2.38 x 1.5"
Weight	Approx. 6.2 oz
Catalog No.	2121.24



Take accurate temperature and humidity measurements in a variety of environments with the Thermo-Hygrometer Model CA846.

Thermometer Models CA861, CA863 & CA865

Model CA865 includes an accurate RTD sensor.
Models CA861 and CA863 include K thermocouple(s)



Input	CA861: K thermocouple; CA863: Dual K thermocouple; CA865: RTD
Temperature Scale	Fahrenheit or Celsius user-selectable
Range	CA861: 1999°F or 1350°; CA863: 1999°F or 1300°C; CA865: 199.9°F or 199.9°C
Max Function	Yes
Display Resolution	CA861 & CA863: 1°F or 0.1°C, 0.1°F or 0.1°C; CA865: 0.1°F or 0.1°C
Sensor	CA861: K thermocouple CA863: K thermocouple dual input CA865: Pt385/100Ω RTD temperature sensor
Power Source	9V Alkaline battery
Display	2000-count/backlight
Dimensions	6.81 x 2.38 x 1.5"
Weight	CA861: Approx. 6.5 oz; CA863: Approx. 6.4 oz; CA865: Approx. 6.2 oz
Catalog No.(s)	CA861: 2121.26; CA863: 2121.27; CA865: 2121.28

Infrared Thermometer Models CA870, CA872 & CA876

Measure temperature without contacting the source.



Temperature Range	CA870 & CA872: 500°F or 260°C; CA876: 1022°F or 550°C
Display Resolution	1°F or 1°C
Accuracy	±2% of Reading or ± 6°F
Response Time	One second
Emissivity	CA870 & CA872: Preset 0.95; CA876: Adjustable 0.10 to 1.00
Sensor	CA870 & CA872: Thermopile CA876: Thermopile & K thermocouple
Optical Lens	Fresnel lens
Laser	CA872 & CA876: <0.5mW (670nm)
Power Source	9V Alkaline battery
Display	2000-count/backlight
Dimensions	6.81 x 2.38 x 1.5"
Weight	CA870 & CA872: Approx. 6.5 oz; CA876: Approx. 9 oz
Catalog No.(s)	CA870: 2121.30; CA872: 2121.31; CA876: 2121.34



LAN and Cable Tester Model CA7028 used to locate and test a cable from the patch panel to an office a few hundred feet away.



BNC pigtail cable with alligator clips included with Models CA7024 and CA7026



Remote unit and two patch cords included with Model CA7028



Fault Mapper® Cable Length Meter & Fault Locator Alphanumeric TDR Model CA7024

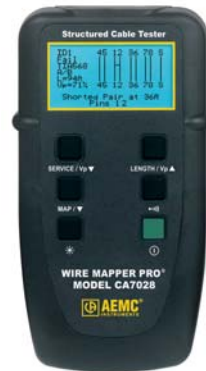
Finds opens, shorts and cable length.



Range @ Vp = 70%	6000 ft
Resolution	0.1 ft up to 100 ft, then 1 ft
Accuracy	±2% of Reading
Min. Cable Length	12 ft
Vp (Velocity of Propagation)	Adjustable from 0 to 99%
Power Source	Four 1.5V AA Alkaline batteries
Display	Graphical LCD/backlight
Dimensions	6.5 x 3.5 x 1.5"
Weight	12 oz
Catalog No.	2127.80

Wire Mapper Pro® LAN & Cable Tester Model CA7028

Maps and pinpoints the location of errors in ethernet cables terminated with RJ-45 connectors.



Range	500 ft
Accuracy	±5%
Cable Types	UTP, STP, FTP & SSTP
Fault Indicated	Short Circuit Pair, Open Circuit Wire, Short Between Pairs, Split Pairs, Cross Pairs, Pair Reversals, Shield Continuity
Service Indication	Telephone, 10BaseT, 100Mbit+, Token Ring
Power Source	Four 1.5V AA Alkaline batteries
Display	Graphical LCD/backlight
Dimensions	6.5 x 3.5 x 1.5"
Weight	12 oz
Catalog No.	2127.82

Fault Mapper Pro® Telephone/Coaxial/Parallel Cable Tester Graphical TDR Model CA7026

Finds multiple terminations and the distance to them. Also finds opens, shorts and cable length.



Range @ Vp = 70%	11,700 ft
Ranges @ Vp = 70%	670, 1470, 2900, 5830 & 11,700 ft
Resolution	Approx. 1% of selected range
Accuracy	±1% of Reading
Min. Cable Length	12 ft
Vp (Velocity of Propagation)	Adjustable from 0 to 99% in 1% steps
Power Source	Four 1.5V AA Alkaline batteries
Display	Graphical LCD/backlight
Dimensions	6.5 x 3.5 x 1.5"
Weight	12 oz
Catalog No.	2127.81

Tone Receiver/ Cable Tracer Model TR02

Use with Models CA7024, CA7026 or CA7028 to trace cables.



Power Source	9V Alkaline battery
Dimensions	5.12 x 1.26 x 1.26"
Weight	3.18 oz
Catalog No.	2127.75

Clamp-On Ground Resistance Tester Models 3711 & 3731

Simple and fast clamp-on operation – no leads, no auxiliary rods or spacing requirements



MODELS	3711	3731
Clamp-On	✓	✓
Measurement Range	Up to 1200Ω	Up to 1200Ω
Ranging	Automatic	Automatic
Current Range	Up to 30Arms	Up to 30Arms
Test Current	Automatic	Automatic
Noise Protection	Enhanced filtering	Enhanced filtering
Other Features	Hold function	Hold, alarm & memory
Power Source	9V Alkaline battery	9V Alkaline battery
Display	Digital	Digital
Dimensions	9.25 x 3.94 x 2.17"	9.25 x 3.94 x 2.17"
Weight	2.2 lbs	2.2 lbs
Catalog No.	2117.60	2117.61

Digital Ground Resistance Tester Model 4610

Measures soil resistivity (4-Point) and ground resistance (2- and 3-Point) Fall-of-Potential Method



2-Point Test	✓
3-Point Test	✓
4-Point Test	✓
Measurement Range	Up to 1999Ω
Ranging	Automatic
Test Current	Automatic
Noise Protection	Enhanced filtering with LED indication
Power Source	Eight 1.5V AA batteries
Display	Digital
Dimensions	8.7 x 5.4 x 5.9"
Weight	2.9 lbs
Catalog No.	2114.94

Model 4610 is also available as a kit which includes wire and auxiliary electrodes (Cat. #2114.95).

Digital Ground Resistance Tester Models 4620 & 4630

Auto-Ranging: automatically selects the optimum range and test current



MODELS	4620	4630
2-Point Test	✓	✓
3-Point Test	✓	✓
4-Point Test	✓	✓
Measurement Range	Up to 1999Ω	Up to 1999Ω
Auto-Ranging	Automatic	Automatic
Test Current	Automatic	Automatic
Noise Protection	Enhanced filtering with LED indication	Enhanced filtering with LED indication
Power Source	Eight C cell Alkaline batteries	AC rechargeable batteries
Display	Digital/backlight	Digital/backlight
Dimensions	9.45 x 7.28 x 4.33"	9.45 x 7.28 x 4.33"
Weight	7.75 lbs	7.75 lbs
Catalog No.	2130.43	2130.44

Model 4620 is also available as a kit which includes wire and auxiliary electrodes (Cat. #2130.45); Model 4630 is also available as a kit which includes wire and auxiliary electrodes (Cat. #2130.46).



Digital Ground Resistance Tester Model 4630 performing a 3-Point ground resistance test on an individual rod.

Clamp-On Meter 500 Series

Models 500, 501, 502 and 503 are rugged, compact, professional clamp-on meters with a large, easy-to-read 4000-count display.



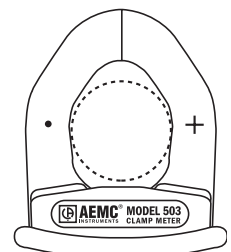
MODELS	500	501	502 TRMS	503
AC Current	400A	400A	400A	400A
AC Voltage	600V	600V	600V	600V
DC Current	—	—	—	400A
DC Voltage	—	600V	600V	600V
Resistance	400Ω	400Ω	400Ω	400Ω
Continuity (Beeper)	<35Ω	<40Ω	<40Ω	<40Ω
Frequency	—	10Hz	10Hz	—
Hold	Yes	Yes	Yes	Yes
Push-button Apc Zero	—	—	—	Yes
Range Selection	Auto-Ranging	Auto-Ranging	Auto-Ranging	Auto-Ranging
Display	4000-count	4000-count	4000-count	4000-count
Bargraph	—	Yes	Yes	Yes
Power-Off	Automatic & manual	Automatic & manual	Automatic & manual	Automatic & manual
Power Source	Two 1.5V AAA Alkaline batteries	Two 1.5V AAA Alkaline batteries	Two 1.5V AAA Alkaline batteries	Two 1.5V AAA Alkaline batteries
Battery Life (Typical)	300 hours	100 hours	100 hours	80 hours
Safety Rating	EN 61010, 600V, CE Mark	EN 61010, 600V, CE Mark	EN 61010, 600V, CE Mark	EN 61010, 600V, CE Mark
Jaw Opening	1.1"	1.1"	1.1"	1.1"
Test Leads	Red & black terminated with test probes	Red & black terminated with test probes	Red & black terminated with test probes	Red & black terminated with test probes
Carrying Case	Soft carrying case	Soft carrying case	Soft carrying case	Soft carrying case
Dimensions	7.60 x 1.97 x 1.1"	7.60 x 1.97 x 1.1"	7.60 x 1.97 x 1.1"	7.60 x 1.97 x 1.1"
Weight	8.11 oz	8.11 oz	8.11 oz	8.11 oz
Catalog No.	2117.54	2117.21	2117.66	2117.22



Clamp-On Meter Model 502 monitoring phase current on a power panel



Models 500, 501, 502 and 503 include a pair of test leads, soft carrying pouch and user manual.



Jaw Opening: 1.1" (28mm)
Conductor Size:
one 500MCM cable

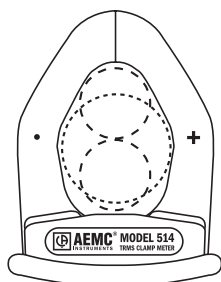
CLAMP-ON METERS

Clamp-On Meter 500 Series

Models 511, 512 and 514 are rugged, standard size, professional clamp-on meters with large, easy-to-read 4000-count display.



MODELS	511	512 TRMS	514 TRMS
AC Current	1000A	1000A	1000A
AC Voltage	750V	750V	750V
DC Current	—	—	1000A
DC Voltage	1000V	1000V	1000V
Resistance	4000Ω	4000Ω	4000Ω
Continuity (Beeper)	<40Ω	<40Ω	<40Ω
Diode Test	Yes	Yes	Yes
Frequency (from A & V)	10kHz	10kHz	10kHz
Hold	Yes	Yes	Yes
Min/Max	Yes	Yes	Yes
Peak	Yes, 1ms	Yes, 1ms	Yes, 1ms
Δ Relative Function	Yes	Yes	Yes
Push-button Avc Zero	—	—	Yes
Range Selection	Automatic & manual	Automatic & manual	Automatic & manual
Display	4000-count	4000-count	4000-count
Bargraph	Yes	Yes	Yes
Power-Off	Automatic & manual	Automatic & manual	Automatic & manual
Power Source	9V Alkaline battery	9V Alkaline battery	9V Alkaline battery
Battery Life (Typical)	150 hours	120 hours	40 hours
Safety Rating	EN 61010, 600V, CE Mark	EN 61010, 600V, CE Mark	EN 61010, 600V, CE Mark
Jaw Opening	1.575"	1.575"	1.575"
Test Leads	Red & black terminated with test probes	Red & black terminated with test probes	Red & black terminated with test probes
Carrying Case	Soft carrying case	Soft carrying case	Soft carrying case
Dimensions	9.53 x 2.60 x 1.42"	9.53 x 2.60 x 1.42"	9.53 x 2.60 x 1.42"
Weight	14.10 oz	14.10 oz	14.10 oz
Catalog No.	2117.67	2117.68	2117.70



Jaw Opening: 1.575" (40mm)
Conductor Size: one 750MCM cable
or two 500MCM cables



Models 500, 501, 502 and 503 include a pair of test leads, soft carrying pouch and user manual.



Clamp-On Meter Model 514 measuring primary current on a machine control system

Professional High Performance TRMS Clamp-On Meters Models F01, F03, F05 & F07

Hand-held size, ultra practical and ergonomic



MODELS	F01 TRMS	F03 TRMS	F05 TRMS	F07 TRMS
AC Current	400A	400A	400A	400A
AC Voltage	600V	600V	600V	600V
DC Current	-	400A	400A	400A
DC Voltage	600V	600V	600V	600V
AC + DC Current	-	-	-	400A
AC + DC Voltage	-	-	-	600V
Auto-Ranging	Yes	Yes	Yes	Yes
Resistance	400Ω	4000Ω	40kΩ	40kΩ
Diode Test	-	Yes	Yes	Yes
Continuity (Beeper)	Yes	Yes	Yes (w/adjustable threshold)	Yes (w/adjustable threshold)
Frequency	-	-	20kHz	20kHz
Power	-	-	240kW	-
Power Factor	-	-	-1.00 to 1.00	-
Phase Rotation	-	-	Yes	-
Temperature (int or ext)	-	-50° to 1832°F (-10° to 1000°C)	-	-50° to 1832°F (-10° to 1000°C)
Adapter (Input)	-	-	-	4000mV
Min/Max/Peak	-	Yes	Yes	Yes
Hold	Yes	Yes	Yes	Yes
Inrush Current	-	-	0.5 to 10 cycles selectable	0.5 to 10 cycles selectable
Buzzer for Overrange	Yes	Yes	Yes	Yes
V-Live™ ⁽¹⁾	45Vp	45Vp	45Vp	45Vp
Display	9999-count	9999-count	9999-count	9999-count
Backlight	-	Yes	Yes	Yes
Power-Off	Yes	Yes	Yes	Yes
Power Source	9V Alkaline battery	9V Alkaline battery	9V Alkaline battery	9V Alkaline battery
Battery Life (Typical)	100 hours	75 hours	60 hours	75 hours
Safety Rating	EN 61010-1, EN 61010-2-032, 600V Cat. III, CE Mark	EN 61010-1, EN 61010-2-032, 600V Cat. III, CE Mark	EN 61010-1, EN 61010-2-032, 600V Cat. III, CE Mark	EN 61010-1, EN 61010-2-032, 600V Cat. III, CE Mark
Jaw Opening	≤1.02"	≤1.02"	≤1.02"	≤1.02"
Test Leads	Red & black terminated with test probes	Red & black terminated with test probes	Red & black terminated with test probes	Red & black terminated with test probes
Carrying Case	Soft carrying case	Soft carrying case	Soft carrying case	Soft carrying case
Hazardous Voltage Indicator ⁽²⁾	≥600Vrms or DC	≥600Vrms or DC	≥600Vrms or DC	≥600Vrms or DC
Low Battery Indicator ⁽³⁾	Yes	Yes	Yes	Yes
Dimensions	7.6 x 2.76 x 1.46"	7.6 x 2.76 x 1.46"	7.6 x 2.76 x 1.46"	7.6 x 2.76 x 1.46"
Weight	9.17 oz	9.17 oz	9.17 oz	9.17 oz
Catalog Number	2129.51	2129.52	2129.53	2129.54

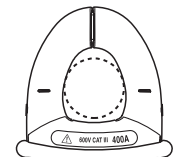
⁽¹⁾Indicates voltage higher than instrument rating

⁽²⁾A continuous buzzer is sounded when more than 600Vdc or RMS is measured indicating that it is higher than the meter's guaranteed safety rating

⁽³⁾Remaining operating time expressed in hours on Models F03, F05 and F07



Models F01, F03, F05 and F07 include test leads, soft carrying case and user manual.



Jaw Opening: ≤1.02" (26mm)
Conductor Size:
one 500 MCM cable

Professional Digital Multimeter CA5000 Series

Tough, reliable and economical professional digital multimeters are offered in a choice of 2000-, 4000- and 40,000-count models.



MODELS	CA5205 ⁽¹⁾ Auto AC/DC Voltage	CA5210 ⁽²⁾ Low Impedance Input	CA5220	CA5230 TRMS	CA5240 TRMS (AC, DC + AC)	CA5260
AC Current	–	–	10A	10A	10A	400µA & 4000µA
AC Voltage	600V	600V	600V	600V	600V	600V
DC Current	–	–	10A	10A	10A	400µA & 4000µA
DC Voltage	600V	600V	600V	600V	600V	600V
Nominal Accuracy	1%	1%	1%	0.25%	0.10%	1%
Input Impedance ⁽³⁾	3MΩ	270kΩ & 10MΩ	10MΩ	10MΩ	10MΩ	10MΩ
Resistance	20MΩ	40MΩ	40MΩ	40MΩ	40MΩ	40MΩ
Continuity (Beeper)	≤700Ω	≤40Ω	≤40Ω	≤40Ω	≤40Ω	≤35Ω
Diode Test	Yes	Yes	Yes	Yes	Yes	Yes
Capacitance	–	4nF to 40µF	4nF to 40µF	4nF to 40µF	4nF to 40µF	40µF to 4000µF
Frequency	–	–	200kHz	400kHz	2MHz	–
Accessory Range (ADP)	–	400mVdc	–	–	–	–
Hold	Yes	Yes	Yes	Yes	Yes	Yes
Temperature Range	–	–	–	–	–	-40° to 2000°F
Sensor	–	–	–	–	–	K thermocouple
Min/Max	–	–	Yes	Yes	Yes	Yes
Peak	–	–	–	–	Yes	–
Display	Large 2000-count	4000-count	4000-count	4000-count	40,000-count	4000-count
Bargraph	–	40-segment	40-segment	40-segment	40-segment	–
Display Backlight	–	–	Yes	Yes	Yes	Yes
Range Selection	Automatic & manual	Automatic	Automatic & manual	Automatic & manual	Automatic & manual	Automatic & manual
Power-Off	Manual	Auto power-off (30 min) or manual	Auto power-off (30 min) or manual	Auto power-off (30 min) or manual	Auto power-off (30 min) or manual	Auto power-off (30 min) or manual
Power Source	Two 1.5V AA Alkaline batteries			9V Alkaline battery		
Battery Life (Typical)	500 hours	600 hours	600 hours	500 hours	400 hours	400 hours
Safety Rating	EN 61010-1, 600V Cat III-2, CE Mark					
Fuse Protection	Electronic	Electronic	Electronic & HBC	Electronic & HBC	Electronic & HBC	HRC
Rubber Housing	Rugged, shockproof, protective, dirt resistant gray holster with Multistand™ (for lead and probe storage)					
Test Leads	Red & black terminated with test probes					
Index of Protection	IP40	IP40	IP40	IP40	IP40	IP40
Dimensions	7.0 x 2.5 x 1.7"	7.0 x 2.5 x 1.7"	7.0 x 2.5 x 1.7"	7.0 x 2.5 x 1.7"	7.0 x 2.5 x 1.7"	7.0 x 2.5 x 1.7"
Weight	13 oz	13 oz	13 oz	13 oz	13 oz	13 oz
Accessory Clamp-Ons	Yes – up to 1500A _{dc} & 1000A _{ac}					
Catalog No.	2116.73	2116.74	2116.75	2116.76	2116.77	2116.78

⁽¹⁾Automatic detection of V_{dc} or V_{ac}

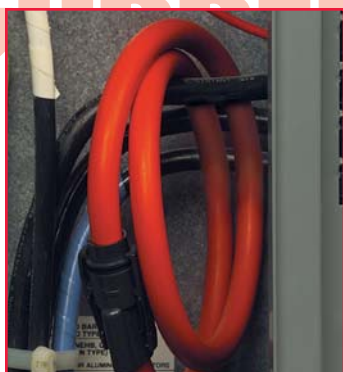
⁽²⁾Additional function "ADP": input 0 to 500mV_{dc} for accessories

⁽³⁾Model CA5210, Velec position with 270kΩ low impedance volts range

See page 14 for our complete line of
Current Measurement Probes,
measuring from mA_{dc} to 30,000A_{ac}



CA5000 Series models include test leads and user manual.



AmpFlex™ Flexible Current Probe provides direct reading on DMMs and other instruments.

	Range
Flexible Current Probes	30,000Arms
JM Series AC Current Probes	3000AAC
K Series DC/AC MicroProbes	4.5mA
MD Series AC Current Probes	600A
MN100 Series AC Current Probes	150AAC
MN200 & MN300 Series AC Current Probes	240AAC
MR400 & MR500 Series AC/DC Current Probes	1000AAC/1500Adc
SL Series AC/DC Current Probes	120AAC/150Adc
SR Series AC Current Probes	1000AAC

DC/AC MicroProbes



- Measures extremely low level DC from 100 μ A
- Outputs signal proportional to total current (DC + AC)
- Low noise
- Ultra-compact size and non-contact clamp-on convenience
- Simple plug-in operation
- Designed for use with digital multimeters and oscilloscopes
- No range or mode (AC/DC) switching required
- CE Mark

Flexible Current Probes



- Models ranging from 30 to 30,000Arms
- Accuracy 1% of Reading
- TRMS measurements when connected to a TRMS instrument
- No core saturation or damage if overloaded
- Overrange LED for measurement circuitry
- EN 61010, 1000V Cat. III
- CE Mark

JM Series AC Current Probes



- Current range: up to 3000AAC (continuous cycle for the full temperature range)
- Output: 1mA/A to 100mVAC/AAC
- Designed for use on DMMs, power and harmonic meters, recorders of instruments with AC current ranges
- CE Mark (except Models JM800A, JM810A and JM840A)

MD Series AC Current Probes



- 600A Range with mA or mV output
- Unique hook-shaped jaws that enable the user to “pry” into or “hook” onto cables
- Maximum conductor size is 2 x 500MCM
- Works as a traditional current transformer with ratio of 1000:1
- CE Mark

MN100 Series AC Current Probes



- Small, compact and very tough AC probes
- “Clothes pin” shape makes them ideal for use in tight areas, such as breaker panels, controller panels, or outlets
- Measurements from 1mA to 150AAC
- Excellent companions to all DMMs. Permits very low AC current measurements

MN200 & MN300 Series AC Current Probes



- Small, compact size
- Measurement range of 100mA to 240AAC
- Jaw opening accommodates conductors up to 250MCM
- Designed for DMMs, loggers, recorders and oscilloscopes
- 40Hz to 10kHz response
- Available with mA or mV output signals
- Available with jack outputs, integral leads with shrouded safety banana plugs or BNC terminated lead
- Designed to EN 61010, 600V Cat. III safety standards
- CE Mark, UL approved

MR400 & MR500 Series AC/DC Current Probes



- Measurement range of 400AAC/600Adc (MR400 Series)
- Measurement range of 1000AAC/1500Adc (MR500 Series)
- Two distinct jaw shapes to be used for hooking or prying around the conductor
- Low phase shift for power measurements
- Designed for DMMs, recorders, oscilloscopes, power and harmonic meters
- Designed to EN 61010, 600V Cat. III safety standards
- CE Mark

SL Series AC/DC Current Probes



- Low AC and DC measurements
- 50mA to 120AAC/150Adc
- Unique design for probing in crowded wiring in industrial and automotive environments
- Hall effect sensor technology
- Use with DMMs, voltmeters and other voltage measuring instruments
- CE Mark

SR Series Current Probes



- Measurement range of 100mA to 1200AAC
- Large jaw opening accommodates up to two 500MCM conductors
- Ergonomic design and easy operation
- Low phase shift for power measurements
- Available with mA or mV output signals
- Designed for DMMs, recorders, loggers, oscilloscopes, power and harmonic meters
- Designed to EN 61010, 600V Cat. III safety standards
- CE Mark

Note: Product image size not proportionate.

Not all models are UL approved; please consult factory.

Circuit Breaker Identifier Model CBI-1

The most accurate circuit breaker identifier available. No adjustments to make – it's self-calibrating.



Catalog No. 2115.49

Phase Rotation Meter Model PR-1

Compact and rugged meter designed to identify phase sequence on three-phase systems.



Catalog No. 2121.06



Model PR-1 quickly identifies proper phase sequence in an industrial panel.

Outlet Tester Models OT-1 & OT-2

Detects faulty wiring in 3-wire receptacles. Model OT-2 also tests GFCIs.



Model OT-2



Model OT-1

Catalog No. 2121.02 (OT-1)
Catalog No. 2121.03 (OT-2)

Phase & Motor Rotation Tester Model PMR-1

Three functions in one unit –

- Phase rotation tester
- Motor rotation tester
- Open phase indication



Catalog No. 2121.04



Phase & Motor Rotation Tester Model PMR-1 verifying motor rotation.

Voltage Tester Model SC-1

Detects AC Voltages up to 600V and DC Voltages up to 250V



Catalog No. 2121.01

AC Line Splitter Model ALS-1

Conveniently measure the correct draw from any appliance without breaking or splitting wires.



Catalog No. 2121.05

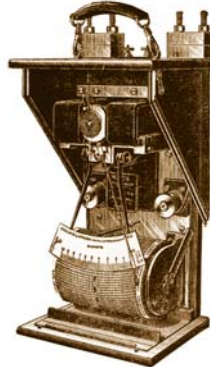


The AC Line Splitter Model ALS-1 facilitates current measurement on an appliance without splitting the line cord.

Since its creation in 1893, Chauvin Arnoux has continued to innovate and develop new products in response to customer needs and applications. Over the years, Chauvin Arnoux has developed extensive expertise and knowledge in many product lines, including: current probes, multimeters (the first multimeter patented in 1927!), ground testers, insulation resistance testers, power meters and analyzers, environmental testers and many others in the portable test instrument realm.

Chauvin Arnoux®, Inc., d.b.a. AEMC® Instruments, has long been associated with innovative high quality products for the electrician. Our reputation for providing customer driven product solutions makes your testing and troubleshooting easier, efficient and effective. Our products range from clamp-on meters to full-scale three-phase power quality analyzers. Our application software makes these products ideally suited for analysis of power quality problems. Grounding, an important area in the assurance of power quality, has been an area of expertise of ours since the mid 1930's. The same is true for our line of insulation resistance testers.

Collectively, AEMC offers a complete one source solution for your electrical testing and troubleshooting needs, your insulation resistance testing requirements, your ground resistance testing and power quality needs. Our rugged design and high quality standards make these instruments well suited for both field and shop use.



Power Analyzer
Introduced 1932



PowerPad™
Introduced 2003

**For full product specifications and other available models,
please visit our website at www.aemc.com**

sales@aemc.com

(800) 343-1391 • (508) 698-2115 • Fax (508) 698-2118

ONE SOURCE

For All Your Electrical Test & Measurement Instruments

950.BR-CONTRACT 05/05 Printed in the USA



Chauvin Arnoux®, Inc.
d.b.a. AEMC® Instruments
200 Foxborough Blvd.
Foxborough, MA 02035

PRSR STD
AUTO
U.S. POSTAGE PAID
FOXBORO, MA
PERMIT NO. 60