

# **3DEXCITE PICTUREBOOK 8.0 & 3DEXCITE XPLORE PICTUREBOOK 4.0**

## **RELEASE NOTES**



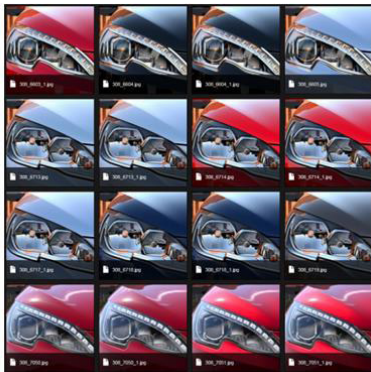
### **XPLORE 4.0 AND PICTUREBOOK 8.0**

3DEXCITE PICTUREBOOK, the data management and creative collaboration platform speeds up processes and creates full transparency for visual data – from CAD files to high-end 3D visualizations. 3DEXCITE XPLORE PICTUREBOOK is the end-to-end visual collaboration platform that brings simplicity to early product definition and marketing decision-making in local, national and global teams. Involve all stakeholders in the communication process via one central tool. Easy use and intuitive navigation, with access via any major browser, make XPLORE perfect even for non-experts, allowing them to search and share assets, view, review and communicate on projects on the go, or interact with 3D models in real-time. Whether you are working from a desktop or tablet, XPLORE is your opportunity to make global decisions, while ensuring highest visual quality of reviews and complete security of data. The powerful combination of XPLORE with the data management and creative collaboration platform PICTUREBOOK is your key to effective global decision-making.

## XPLORE 4.0 AND PICTUREBOOK 8.0

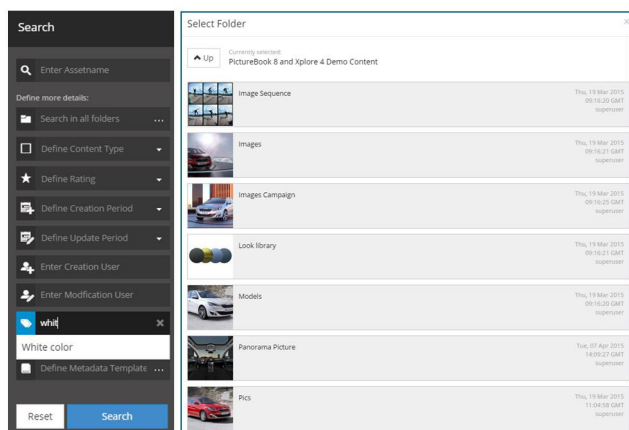
Your Product available to you always, everywhere

### LARGE REPOSITORY MANAGEMENT



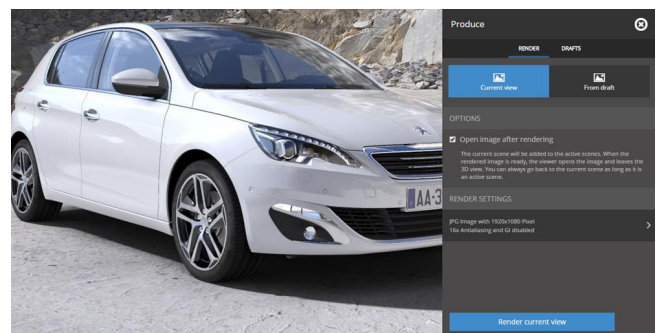
XPLORE 4 users can now add metadata and tags to their assets, while also making meta data fields obligatory for assets uploaded by other users. For an enhanced communication, smart folders and collections can now be created and shared with other users directly out of XPLORE.

### FAST FIND



Library searches have just gotten easier. Autocomplete helps guide searches based on names, tags, and other meta data. The results can be narrowed down by further filtering the selected meta data and tags. Finally, smart folders provide access to often reused searches.

### RENDER IMAGE



For those users, who like a particular selection of views and configurations they created within a scene, XPLORE 4 allows creating render drafts, which can be saved to draft sets, making the exact settings for each such shot easily retrievable. You can render draft sets instantly or in queue – for design reviews or even early marketing.

### PANORAMA VIEWER



To help users appreciate every detail of the product inside and out, the all-new panorama viewer lets you explore not only the exterior, but also look around the interior of the product.

This increased flexibility leads to better-informed, faster decision-making.

## SYSTEM REQUIREMENTS FOR PICTUREBOOK 8.0

### Client Requirements

#### Validated Client Platforms

- Microsoft Windows® 7 with Internet Explorer 10 or 11 and Firefox 32
- Apple Mac OS 10.9 with Safari 7.0.5 and Firefox 30

#### Additional Notes

Make sure the Browser has Flash Player 15.x or higher installed.

In order to upload files larger than 2GB onto PICTUREBOOK use the Java upload mechanism. Therefore, make sure Java Runtime Environment (JRE) version 7 or higher is installed.

Minimum display resolution for clients is 1280x1024; for the meeting feature: 1600x1200.

Firewalls and antivirus software could influence the communication for PICTUREBOOK server. Be sure the following ports are not blocked: 8080 / 8443 (if using default installation ports).

### Server Requirements

Recommended production system (minimum requirements)

- Windows Server 2012 R2 64Bit ( WS 2008 R2 64Bit) / SUSE Linux Enterprise Server 11 SP2 64Bit
- CPU: Dual Core with 3 GHz or comparable
- RAM: 4 GB
- Network: 1 GBit
- HDD: 100 GB - 1 TB / RAID 5 or RAID 10 (Depending on amount of models & usage of external file space - model data, rendering, additional media data and its previews will be saved into the server's local file space.)

#### Extra recommendations for the 3D Meeting feature usage

- Only Windows OSs can be used
- Network:
  - upstream (PictureBook - client): recommended 1 GBit (minimum 100MBit) – rule of thumb is 10MBit for each meeting participant
  - in the cluster: 1 GBit
- Maximum number of meeting participants: 10 (as long as network bandwidth requirements are met)
- Machines (in the cluster) running POWERHOUSE
  - Minimum configuration: DELTAGEN's recommended system configuration, with an nVidia Quadro FX 6000 graphics card.
  - Homogenous amount of RAM
- As scenarios involving POWERHOUSE are generally rather complex, we recommend requesting our inhouse consulting along with the deployment of POWERHOUSE.

#### Validated databases

- PostgreSQL 8.4 or higher (version 8.4 recommended)
- Oracle 11g
- Microsoft SQL 2008

#### Communication between PICTUREBOOK servers and clients

- HTTPS (default installation port 8443) / HTTP (default installation port 8080)
- For secure data exchange HTTPS is recommended.
- For performance reasons, use an Apache proxy installation (for details on how to properly set Apache, please see the POWERHOUSE documentations "Tweaks and Fine Tuning" chapter).

#### Additional Notes

To use PICTUREBOOK Admin, a minimum display resolution of 1024x768 is needed.

Ghostscript 32 bit version 9.06 (validated version) will have

to be installed for the "preview generation" feature to work.

If you use POWERHOUSE and Composer functionality, please see the technical documentation and requirements of POWERHOUSE.

When choosing PICTUREBOOK's filestore to be placed in a network share you should count with considerable data-transfer performance loss.

To improve this situation, place the picturebook\_cache and the picturebook\_temp folders on the local hard drive and leave only the picturebook\_filstore in the share.

### IMPORTANT

If you use Windows 7 or Windows Server 2008, you need administrator rights when installing. When running the server application from the Windows Program Files directory you will need full Administrator rights too since these folders are protected by Windows.

PICTUREBOOK is writing some log files and therefore requires also creation and editing rights.

When having some trouble with these rights, install PICTUREBOOK into another directory e.g. C:\RTTSoftware\PictureBox7\_2\

- After installing a new PICTUREBOOK Server version or DELTAGEN plug-ins on an existing PICTUREBOOK installation, clean the Flash Player's cache on all client machines to make sure the clients are using the latest version and not older, cached ones.
  - Open Control Panel > Flash Player (32 bit)
  - Choose "Flash Player Settings Manager" - Storage tab
  - Click the "Delete All..." button
  - In the "Delete All Site Data in Flash Player" dialog make sure the "Delete All Site Data and Settings" checked
  - Press the "Delete Data" button.

### Compatibility Notes

PICTUREBOOK 7.2 was validated with DELTAGEN 12.1.1 and DELTAGEN 12.2 in PICTUREBOOK Browser scenario and POWERHOUSE 3.2 and DELTAGEN 12.2 (on the render nodes) in the Composer/ Meeting scenario. Additional configurations can be validated on demand.

## SYSTEM REQUIREMENTS FOR XPLORE PICTUREBOOK 4.0

### Validated desktop environments

- Microsoft Windows 7: Mozilla Firefox 32+, Google Chrome 36+, Internet Explorer 9+
- Apple Mac OS 10.10: Safari 8.0.5 and Firefox 37

### Validated mobile devices

- Apple iPad Air with iOS 7.1 and Safari
- Apple iPad 2 with iOS 7.1 and Safari
- Apple iPad Mini with iOS 6.1 and Safari
- Samsung Galaxy Tab Pro 12" with Android 4.x and Chrome Browser
- Microsoft Surface Pro 2 with Windows 8 and Internet Explorer 11

XPLORE PICTUREBOOK is optimized for screens with 10 inch and higher.

**Note:** The 3D viewer with streaming 3D Scenes via POWERHOUSE, only Firefox, Chrome and Safari are supporting MJPEG Streams for other Browser a fallback to single JPEG files is implemented.



## KNOWN ISSUES

### Installation in default folder

If PICTUREBOOK is installed in the default folder, you cannot install another version in the same location. It is a general install4j problem with the default path.

Workaround: rename existing installation folder. For further information please see the technical documentation.

### Deletion Assets with relations

Assets with a relation (PDM) that have been deleted into the recycle bin (not permanently) are still keeping their relations. For further information please see the user manual.

### Upload of a large amount of Assets

In order to upload a huge amount of Assets please use the open files dialog!

### WINDOWS XTENSION

The behavior of the WINDOWS XTENSION has been adjusted to have the normal Windows standard behavior on the right side when creating a new folder. On the left side you should right click to create a new folder, where a dialog prompts back asking for the folder name.

### Replication

Replicating compressed files works up until the maximum size of 4GB. For bigger files please use uncompressed replication.

### PDM import recommendation

All users that access a specific PDM model and its geometries should have access to the corresponding (same) part library folder - according to the intended use case!

### Presentation pointer issue

The laser pointer of the attendees may get stuck when presenter changes the asset. This might happen for mobile devices like Android and iOS devices.

### XPLORE on Home screen of iPad does not remember the session

Placing XPLORE PICTUREBOOK as shortcut on the home screen of an iOS device like an iPad, the application will not remember the session when switching applications. Navigating back to the XPLORE Application, redirects to login screen. This is due to a limitation of the iOS operating system.

### 3D Scene – Navigation might not be responsive for the first 30 sec

Due to unknown circumstances it might happen that the initial navigation of a Scene is not responsive for some time. After ~30 sec it starts working.

## Our 3DEXPERIENCE® platform powers our brand applications, serving 12 industries, and provides a rich portfolio of industry solution experiences.

Dassault Systèmes, the 3DEXPERIENCE® Company, provides business and people with virtual universes to imagine sustainable innovations. Its world-leading solutions transform the way products are designed, produced, and supported. Dassault Systèmes' collaborative solutions foster social innovation, expanding possibilities for the virtual world to improve the real world. The group brings value to over 170,000 customers of all sizes in all industries in more than 140 countries. For more information, visit [www.3ds.com](http://www.3ds.com).

