

7" Video Screen

user manual v1.0



video



photo



audio

contents

1. WHAT IS THE 7VS.....	1
2. WHAT YOU GET.....	1
3. FEATURES.....	1
4. SETUP INSTRUCTIONS.....	2
4.1 CONNECT SPEAKERS.....	2
4.2 CONNECT BUTTONS.....	2
4.3 INSERT SD CARD.....	2
5. FORMATS.....	3
5.1 MEDIA REQUIREMENTS.....	3
5.2 OPTIMAL PLAYBACK.....	3
6. REMOTE CONTROL.....	3
6.1 REMOTE CONTROL BUTTONS.....	4
6.2 FACTORY RESET.....	4
7. PROGRAMMING CONTENT.....	5
8. TIMER POWER SETUP.....	5
9. SLIDESHOW OPTIONS.....	5
10. REFORMATTING INSTRUCTIONS.....	6

WELCOME

Thank you for purchasing 7" Video Screen.

The 7" Video Screen is one of a range of products we offer specific to the heritage marketplace. We are confident that we have other products you will find useful and look forward to dealing with you again soon.

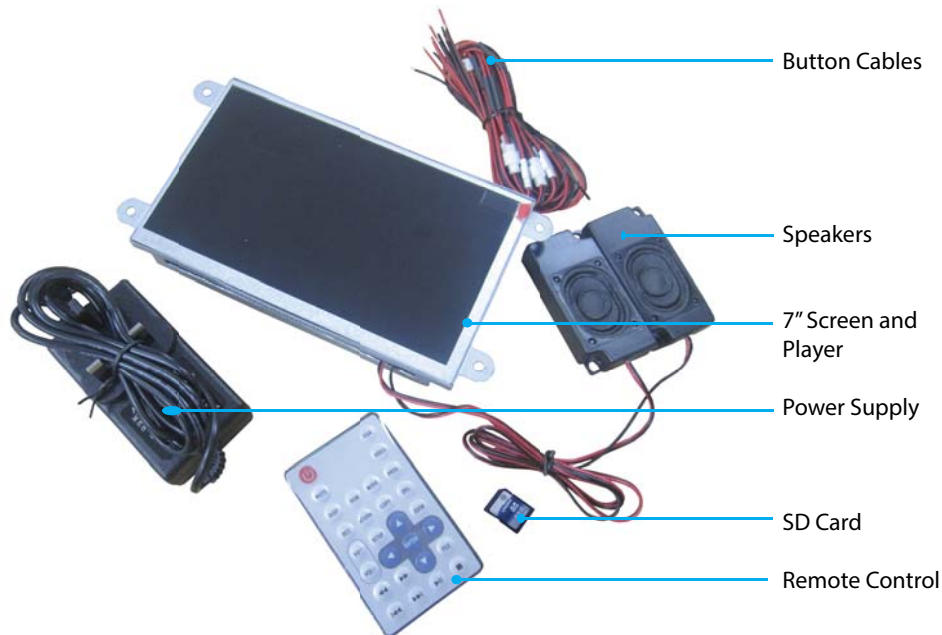
T: +44 (0) 1639 767007

W: www.blackboxav.co.uk

1.WHAT IS THE 7VS

7VS is an all in one digital media player and screen. It's used to display and distribute media communication, videos and images in a small compact manner. Thanks to the open frame design and inbuilt mounting wings it can be built into signage or other such installations. The 7VS supports a wide range of digital media files which are stored on an SD card. A remote is also supplied for easy player control, it can be looping or up to 8 button activated.

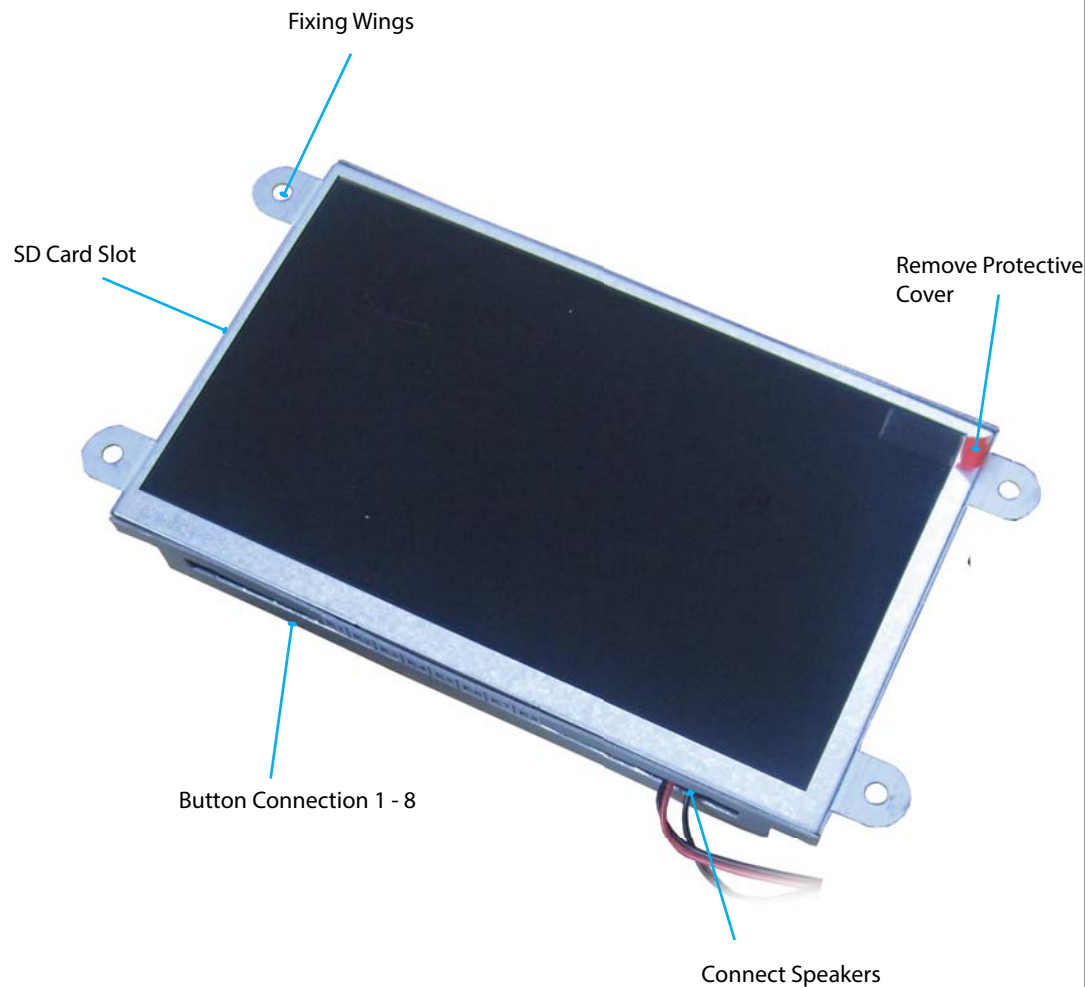
2.WHAT YOU GET



3.FEATURES

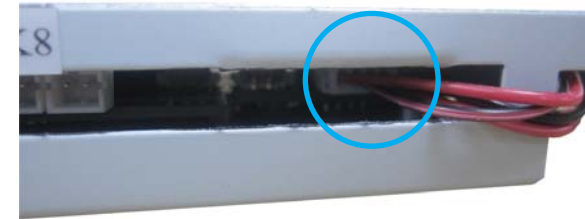
Media Format Compatibility	<i>Image:</i> JPEG, BMP <i>Audio:</i> MP3, WMA, AAC, OGG <i>Video:</i> MPEG-1, MPEG-2, AVI
Media Storage and Playback Source	High Speed Compact Flash (CF) Card High Speed Secure Digital (SD) Card USB 2.0 Drive (Thumb Drive/Flash Drive)
Playback Modes	<i>Audio Playback</i> Video with Music or Picture with Background Music
On-Screen Display Languages	English Chinese Japanese
Image Slideshow Playback	<i>Picture Rotation</i> Portrait-Vertical or Landscape-Horizontal <i>Slideshow Transitions</i> 14 Different Transition Effects Slide Intervals: 1 to 60 seconds

4.SETUP INSTRUCTIONS



4.1 Connect Speakers

The 7VS is supplied with 2 x stereo speakers, these are connected on the underside of the device to the far right, as displayed below;



4.2 Connect Buttons

If you wish to use button activated content then attach the required amount of buttons using the button wires supplied to the appropriate button input as displayed below;



4.2 Insert SD Card

See Programming Instructions for information on how to program your SD Card. Once programmed place it facedown in the slot located on the left of the 7VS as displayed below;



5.FORMATS

An SDHC card is used as the storage medium for the 7VS. The card must be formatted to FAT 32.

Converting your video Content

Before putting the content onto the SD card it needs to be in the right format as listed below, for reformatting instructions see 'Reformatting' section.

5.1 Media Requirements

Video	Category	Codec/FourCC	Maximum Resolution	Maximum Video Bitrate
	MPEG1 MPEG2	MPEG1 MPEG2	720x480 30fps	10M
	AVI			
Photo	Sub Type	Codec	Maximum Resolution	Size
	JPG Baseline	YUV400 YUV420 YUV422 YUV440 YUV444	8000x8000	No Limit
Audio	Category	Codec	Sample Rate	Bitrate
	MP2 MP3 PCM (wav) AC3 WMA	MP2 MP3 PCM (wav) AC3 WMA	8-320KHz	32Kbps - 448Kbps

5.2 Optimal Playback

Image Playback

For optimal image playback we recommend images to be 1080 x 608 pixels at 300 DPI and saved as a jpeg.

Video Playback

For optimal video playback it is recommended that your video is 720 x 480 pixels and runs at a frame rate of 30 frames per second in AVI format.

Audio Playback

For optimal audio playback it is recommended that your audio file is of MP3 format and has a bit rate of 44.1Khz

6.REMOTE CONTROL







A remote control is supplied with the 7VS, this enables you to set a range of functions which are explained over the next few pages.

To access the menu press the 'setup' button on the remote, press this again to exit.

If the 7VS is currently playing content you may need to press the 'stop' button before entering the setup menu, otherwise a number of options may be greyed out and unable to be activated.



6.1 Remote Control Buttons

	POWER ON/OFF
MUTE	MUTE Volume ON/OFF
VGA	VGA:1280X720 output (Factory settings:VGA:640X480)
VIDEO	Video output: For YPbPr and CVBS selection
DISP	Displays the current time in the top right corner of screen.
BGM	BGM Back ground music ON/OFF
MODE	MODE All play, Folder play, Single play (Default: All play)
PROG	At stop status, press this key to set "PROGRAM PLAY". Maximum 20 files can be selected.
BCC	SET A TO B Player
RETURN	At stop status, press this key to go to "PLAY LIST" screen.
COPY	One key copy. From USB/SD card copy to CF card or built-in flash memory (USB/SD and CF/ flash Memory should be selected one)
DEL	"DELETE": At stop status, move arrow key to select file want to be deleted, and then press this key. The screen will prompt [ARE YOU SURE YOU WANT TO DELETE THE FILE?], move arrow key to select "YES" to delete file.
VOL+	Increase Volume
VOL-	Decrease Volume
SETUP	Enter SETUP menu
ZOOM	When ZOOM on: Picture/Photo zoom in or zoom out, using and key to select times
	Cursor UP , or let picture have Horizontal mirror image
	Cursor LEFT, or let picture have 90 degree counter clockwise rotation
	ENTER ENTER, play start
	Cursor RIGHT, or let picture have Vertical mirror image
	Cursor DOWN, or let picture have 90 degree clockwise rotation
	LEFT 2x, 4x, 6x, 8x
	RIGHT 2x, 4x, 6x, 8x
FILE	List all files in card or NAND
	Go to PREVIOUS file
	Go to NEXT file
	PLAY/PAUSE (Temporary STOP)
	STOP, return to file list



6.2 Factory Reset

To perform a factory reset (return all settings to their original options) simply do the following;

Preferences > Defaults > Reset

7. PROGRAMMING CONTENT

Once you have edited and converted your video or images into the correct format you will need to put them onto an SDHC card. The way you store content (in folders) will determine how it is activated.

1. The included SD Card is a pre-loaded template (it comes with each folder already set-up) If you are not using a button you must delete the folder. To use other SDHC cards make sure they are formatted to FAT32 first, then create the appropriate folders.

2. Each folder represents a button, except '00' - This is for looping content.

00 - Looping folder (content in here plays automatically on startup)

01 - Button 1

02 - Button 2

etc.

3. Put your converted video or images within each folder, **name them 00, 01, 02 etc. for the order you want them to play when the button is pressed** (for single files in each folder they can be named anything).

Example looping folder (button folders are the same)



Within the above configuration the player will play: video 00.mpg, image 001, image 002 and then loop back video 00 until somebody presses a button.

Note: The looping folder is designed to be used for creating an attractor screen (image/video).

When a button is pressed, every file in that folder will be played, then the 7VS will return to the looping folder.

8. TIMER POWER SETUP

A useful feature of the 7VS is that you can programme it to power up and turn off at a set time each day.

Setup > Clock setup > enter in the details using arrow buttons </> to change digits then v/^ to change detail. Confirm the details are correct.

Setup > Timer power setup, enter your power off and on times </> to change digits then v/^ to change detail. Confirm the details are correct.

Finally go to to Preferences > Timer Power > On
(to access the preferences menu you cannot be playing any content)

To exit the setup press 'setup' on remote.

Your 7VS player will now turn on and off each day at the times set.

9. SLIDESHOW OPTIONS

The player will play a slide show of images. The order will be in name order.

Setup > Picture Setup > Slide Show > On

Eg: Within the root of folder 00 put the files:

01.jpg, 02.jpg, 03.jpg, 04.jpg, 05.jpg

The player will scroll through these images and then loop back to the start.

Image Transitions/ Timings

Setup > Picture Setup > Transition > Select Your Transition Preference

Setup > Picture Setup > Interval > Select Your Time Preference 1-60 seconds

If you are using your screen in portrait you can rotate the images to view in this orientation.

Setup > Picture Setup > Rotate Picture > Rotate

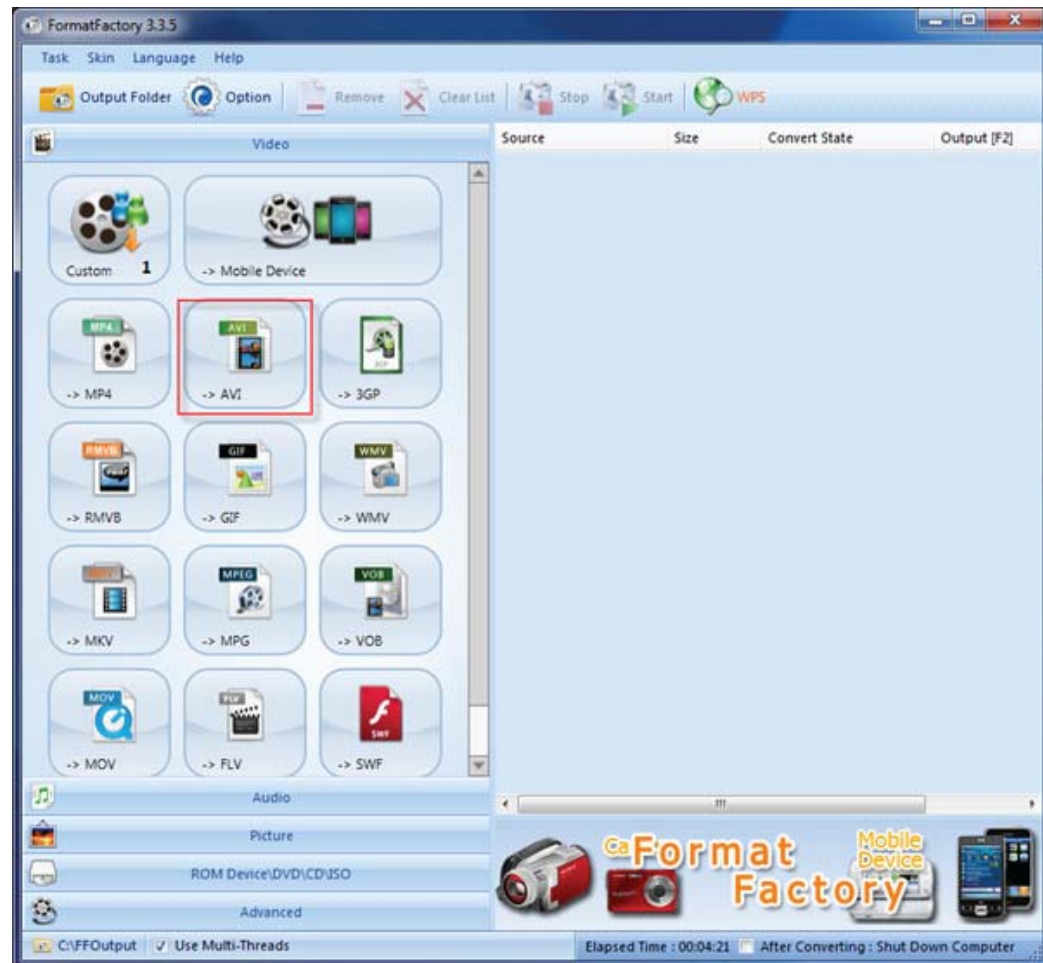
10. REFORMATTING INSTRUCTIONS

If your video content isn't in the correct format to play on the 7VS then you will need to reformat it as follows;

Step 1) Download Format Factory

Format Factory is a free convertor tool for Windows - it can be downloaded from here: <http://www.formatoz.com/>

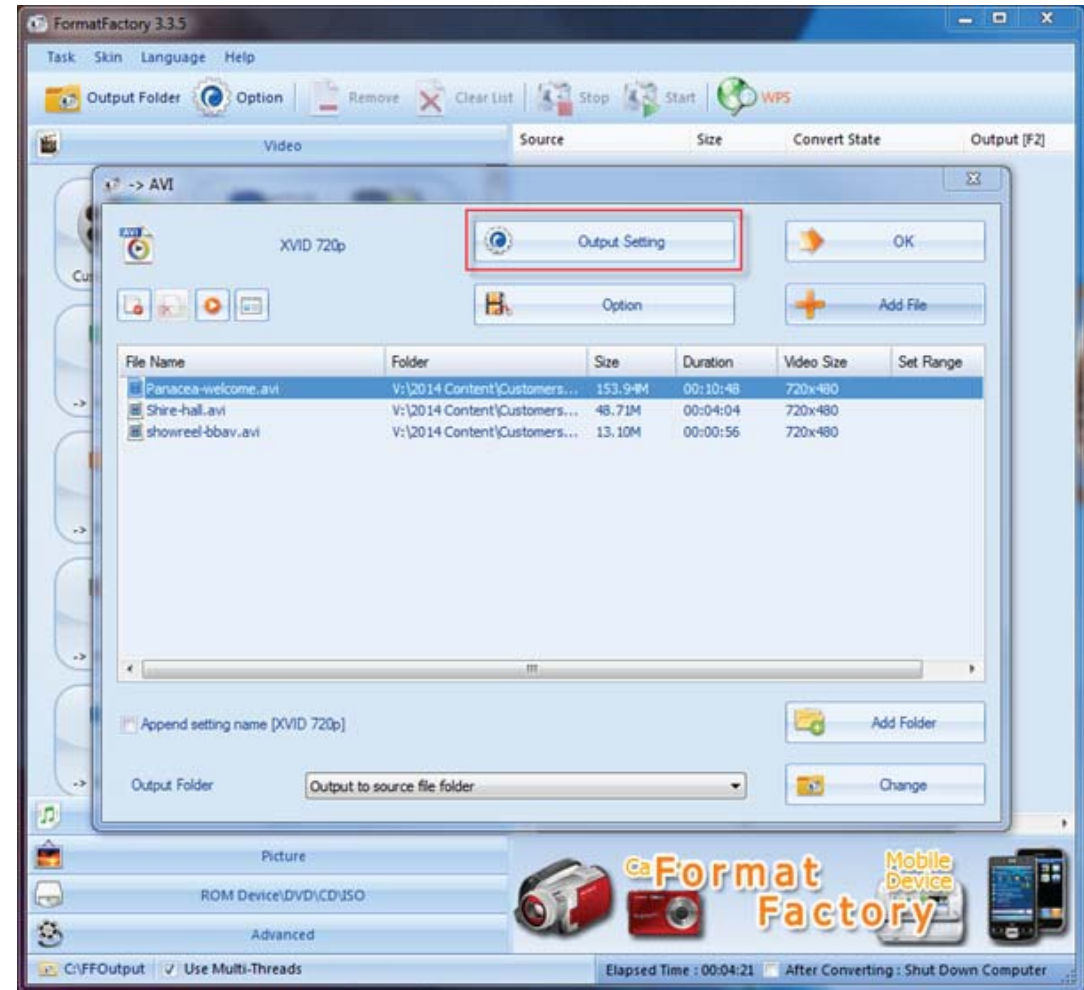
Step 2) Run the program and select '-> AVI'



This will convert your video files to AVI.

Step 3) Load in your files

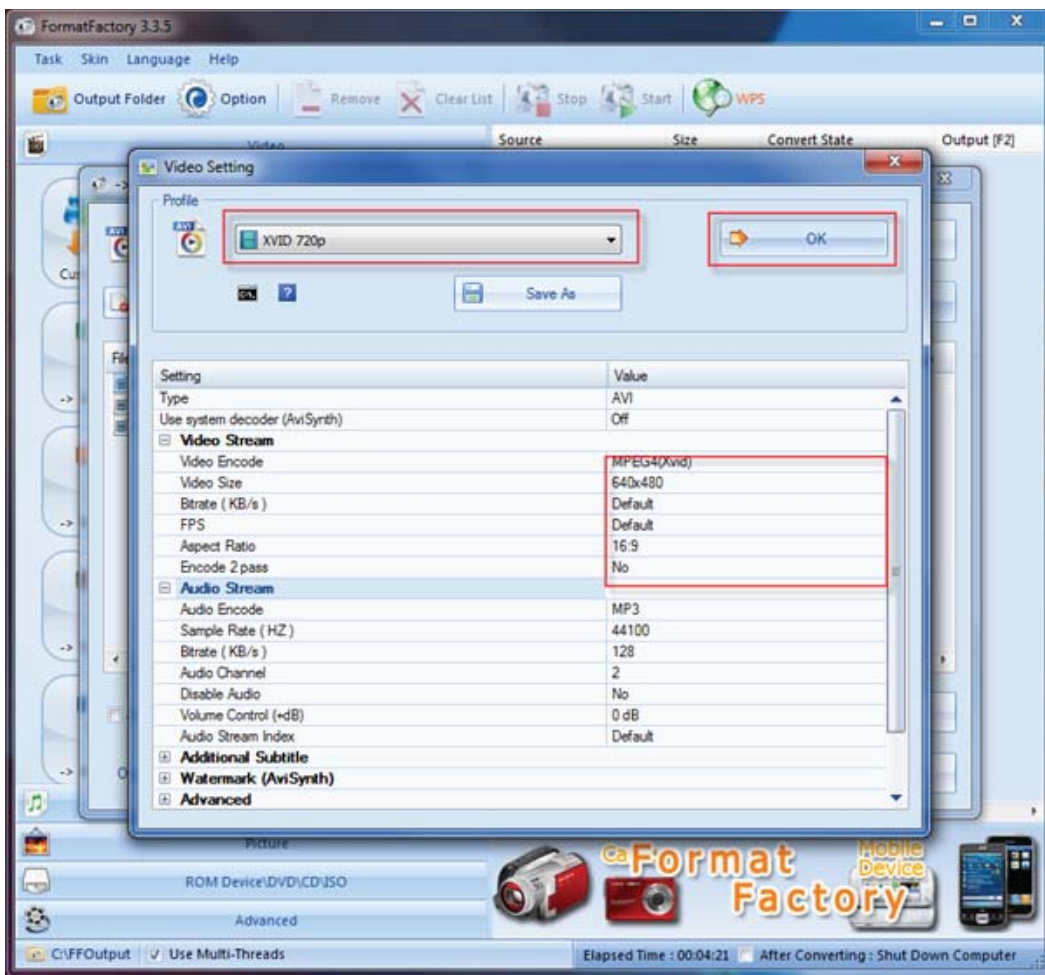
Drag and drop the files you wish to convert then select 'Output Settings'.



Step 4) Select XVID720p

Step 5) Start the conversion

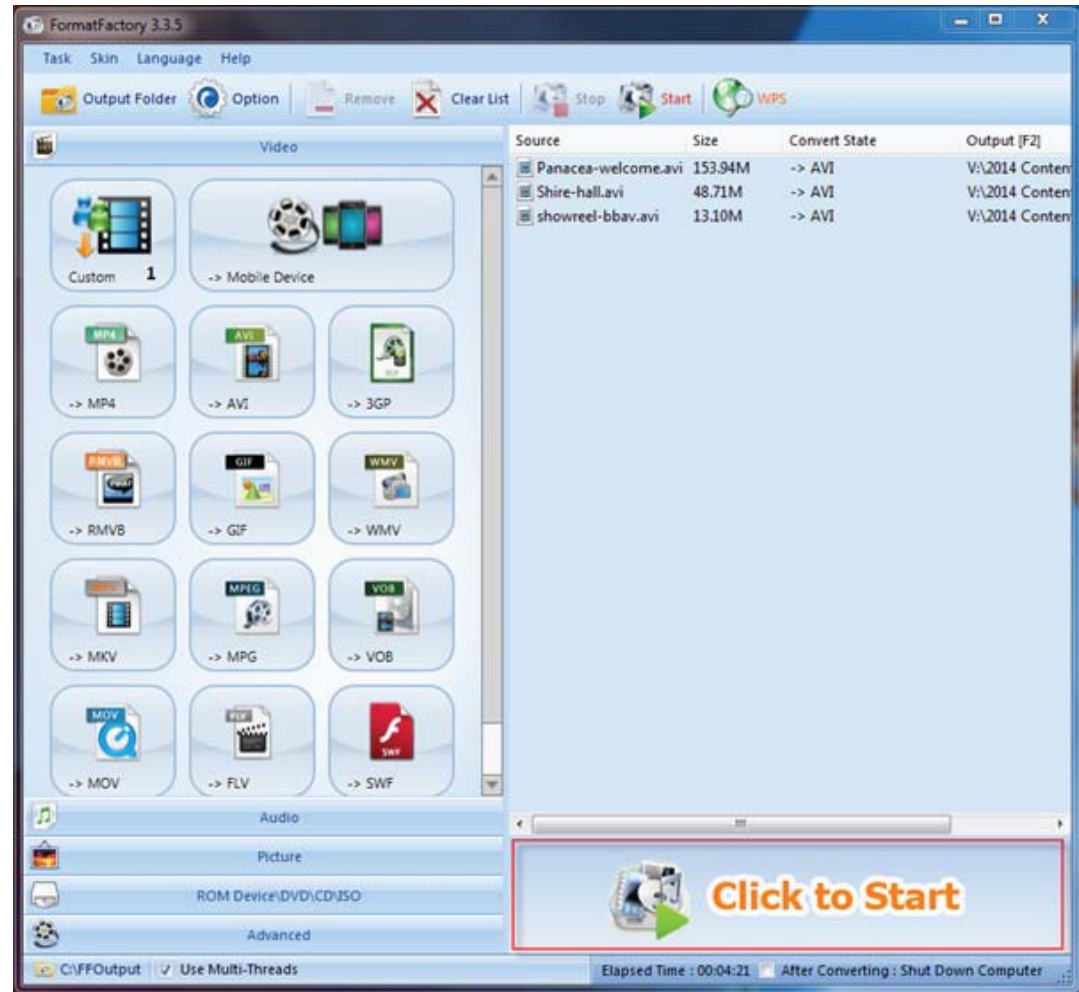
To begin the conversion click 'Start' as shown below;



Select XVID720p from the drop down indicated above, then set the other options as shown;

Video Encode - MPEG4(Xvid)
 Video Size - 640x480
 Bitrate - Default
 FPS - Default
 Aspect Ratio - 16:9
 Encode 2 pass - No

Click 'OK' and then 'OK' again on the next screen



The converted files will be stored in the folder where the original files are located.

Use these converted files as explained in section 7.Programming content.